

Project: Weld County, CO (NAD 83)
Site: Sec. 25-T6N-R63W - NW/SW (Wells Ranch AA26 PAD)
Well: Wells Ranch AA26-62-1HN
Wellbore: Plan C
Design: Final Surveys

Noble Energy



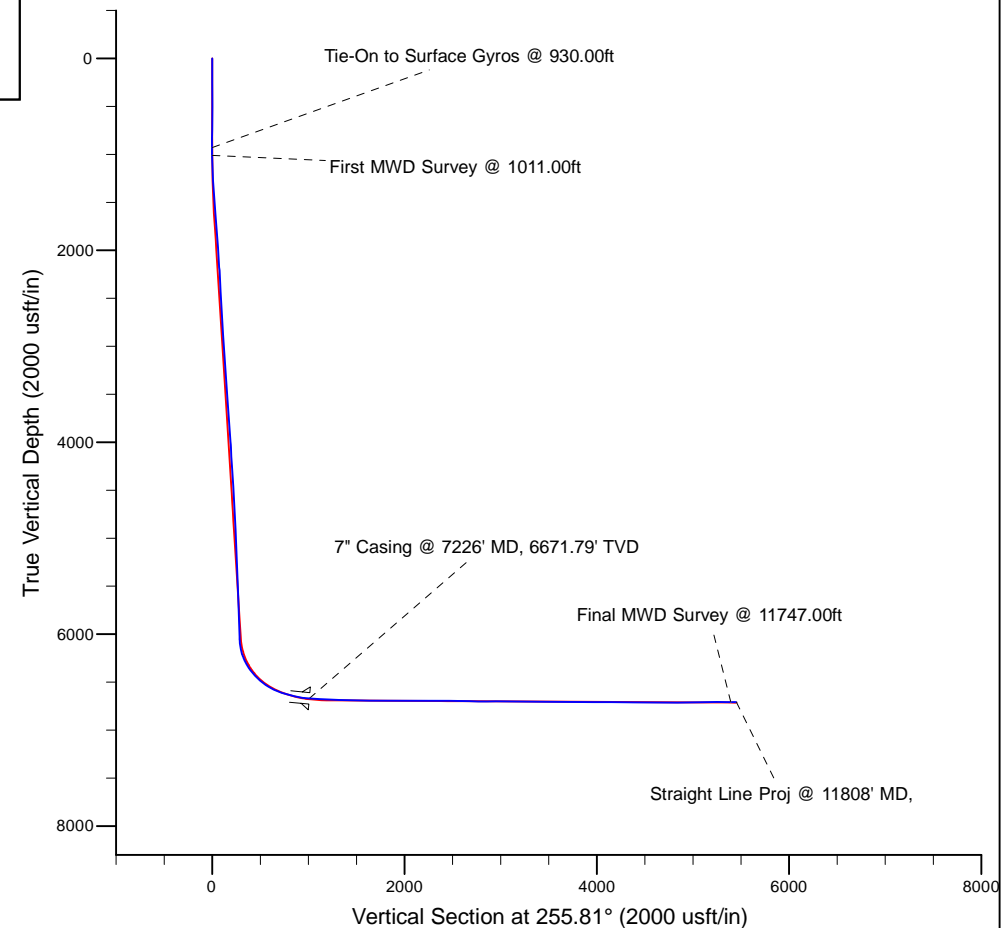
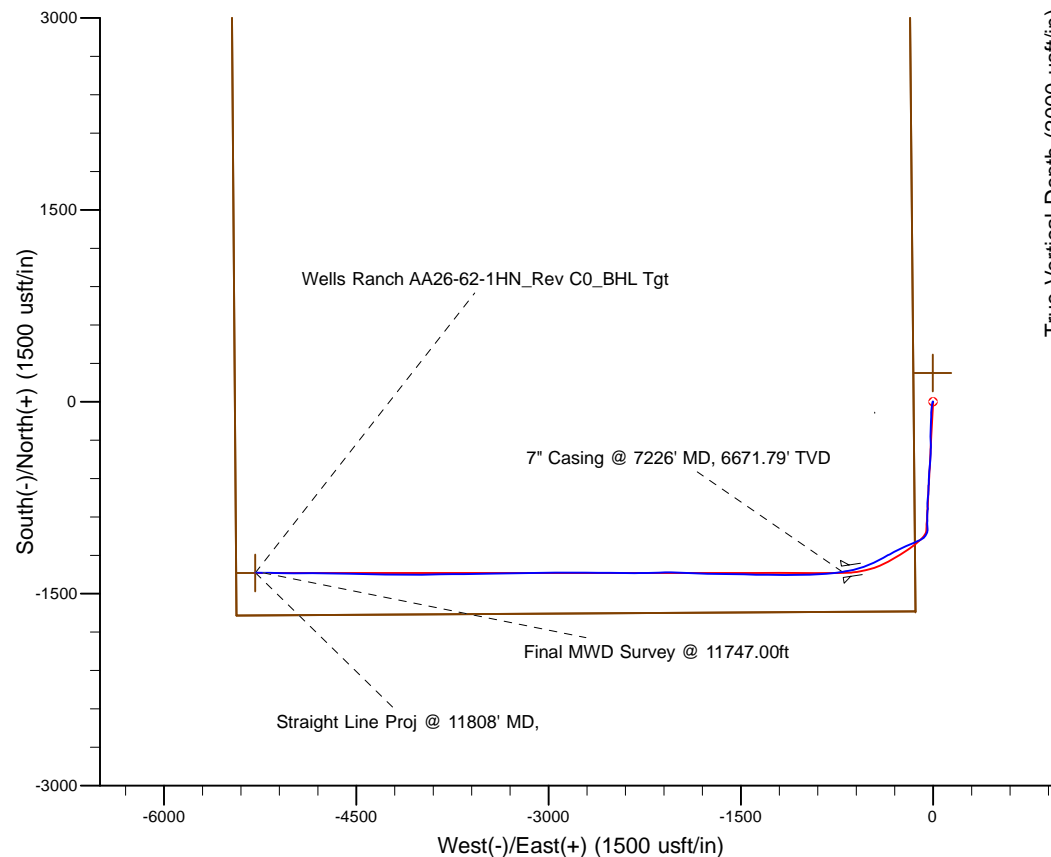
Platted SHL: 1637' FSL, 153' FWL
Platted Lat/Long: 40.45464° N, 104.39410° W
Location: Sec. 25-T6N-R63W

7" Casing: ~312.85' FSL, ~566.93' FEL
Lat/Long: 40° 27' 3.667 N, 104° 23' 48.131 W
State Planes - CO Northern: 1,409,056.53' N, 3,307,040.49' E
Location: Sec. 26-T6N-R63W

BHL: ~334.6' FSL, ~149.85' FWL
Lat/Long: 40° 27' 4.161 N, 104° 24' 47.361 W
State Planes - CO Northern: 1,409,050.04' N, 3,302,461.36' E
Location: Sec. 26-T6N-R63W

LEGEND

- Wells Ranch AA26-62-1HN, Plan C, Rev C0 Proposal V0
- Final Surveys



WELL DETAILS: Wells Ranch AA26-62-1HN

Ground Level: 4793.00
RKB 24 ft. @ 4817.00usft (H&P 322)

Created By: Fred Hartmann
Created On: 11/21/2013

Noble Energy

Weld County, CO (NAD 83)

Sec. 25-T6N-R63W - NW/SW (Wells Ranch AA26 PAD)

Wells Ranch AA26-62-1HN - A7

Design: Final Surveys

Sperry Drilling Services

Final Survey Report

21 November, 2013

Well Coordinates: 1,410,384.75 N, 3,307,748.38 E (40° 27' 16.70" N, 104° 23' 38.76" W)

Ground Level: 4,793.00 usft

Local Coordinate Origin:

Centered on Well Wells Ranch AA26-62-1HN - Slot A7

Viewing Datum:

RKB 24 ft. @ 4817.00usft (H&P 322)

TVDs to System:

N

North Reference:

Grid

Unit System:

API - US Survey Feet - Custom

Geodetic Scale Factor Applied

Version: 5000.1 Build: 70

HALLIBURTON

Design Report for Wells Ranch AA26-62-1HN - Final Surveys

Measured Depth (usft)	Inclination (°)	Azimuth (°)	Vertical Depth (usft)	+N/-S (usft)	+E/-W (usft)	Vertical Section (usft)	Dogleg Rate (°/100usft)
0.00	0.00	0.00	0.00	0.00	0.00	0.00	0.00
252.00	1.10	307.10	251.98	1.46	-1.93	1.51	0.44
503.00	0.20	60.70	502.97	3.13	-3.47	2.60	0.48
745.00	0.50	88.80	744.97	3.36	-2.04	1.16	0.14
930.00	0.20	274.50	929.96	3.40	-1.56	0.68	0.38
Tie-On to Surface Gyros @ 930.00ft							
1,011.00	0.65	358.64	1,010.96	3.87	-1.71	0.71	0.82
First MWD Survey @ 1011.00ft							
1,105.00	2.40	205.84	1,104.94	2.63	-2.58	1.86	3.18
1,197.00	4.95	194.25	1,196.74	-2.95	-4.40	4.99	2.87
1,291.00	8.00	191.71	1,290.13	-13.29	-6.73	9.78	3.26
1,384.00	10.55	186.82	1,381.91	-28.08	-9.05	15.66	2.87
1,477.00	13.80	187.56	1,472.81	-47.54	-11.52	22.82	3.50
1,572.00	15.11	182.50	1,564.80	-71.14	-13.55	30.58	1.91
1,667.00	14.79	182.35	1,656.59	-95.63	-14.59	37.58	0.34
1,761.00	13.71	180.99	1,747.69	-118.75	-15.27	43.91	1.20
1,856.00	14.34	182.12	1,839.86	-141.77	-15.90	50.17	0.72
1,951.00	14.75	184.61	1,931.82	-165.58	-17.31	57.37	0.79
2,046.00	13.41	184.41	2,023.96	-188.62	-19.13	64.78	1.41
2,141.00	12.28	177.97	2,116.59	-209.70	-19.62	70.42	1.92
2,236.00	13.96	183.41	2,209.11	-231.24	-19.94	76.01	2.19
2,330.00	11.93	182.88	2,300.71	-252.26	-21.11	82.29	2.16
2,425.00	12.60	176.24	2,393.55	-272.41	-20.92	87.05	1.64
2,520.00	12.72	177.79	2,486.24	-293.20	-19.84	91.09	0.38
2,615.00	13.32	175.16	2,578.80	-314.55	-18.51	95.04	0.89
2,710.00	13.85	180.95	2,671.14	-336.83	-17.78	99.79	1.54
2,805.00	12.61	181.32	2,763.62	-358.57	-18.20	105.53	1.31
2,900.00	13.92	182.49	2,856.08	-380.35	-18.94	111.58	1.41
2,995.00	13.77	177.98	2,948.33	-403.07	-19.04	117.25	1.15
3,090.00	13.67	186.05	3,040.62	-425.53	-19.82	123.51	2.02
3,184.00	11.42	185.19	3,132.37	-445.85	-21.83	130.44	2.40
3,279.00	12.53	180.59	3,225.31	-465.52	-22.79	136.19	1.54
3,374.00	12.22	186.38	3,318.10	-485.82	-24.01	142.35	1.35
3,469.00	11.89	186.89	3,411.01	-505.52	-26.31	149.41	0.37
3,564.00	10.77	188.25	3,504.16	-524.02	-28.75	156.31	1.21
3,658.00	11.23	182.22	3,596.43	-541.86	-30.37	162.25	1.32
3,753.00	12.47	180.86	3,689.40	-561.36	-30.88	167.53	1.34
3,848.00	14.21	183.05	3,781.84	-583.26	-31.65	173.65	1.91
3,943.00	15.74	181.83	3,873.61	-607.79	-32.69	180.66	1.64
4,038.00	14.18	184.48	3,965.39	-632.27	-34.01	187.94	1.79
4,132.00	12.13	181.92	4,056.92	-653.62	-35.24	194.36	2.27
4,227.00	11.82	181.12	4,149.85	-673.32	-35.76	199.70	0.37
4,322.00	11.46	181.95	4,242.90	-692.48	-36.27	204.89	0.42
4,417.00	10.63	182.46	4,336.14	-710.67	-36.97	210.03	0.88
4,512.00	11.22	189.18	4,429.42	-728.55	-38.82	216.20	1.48
4,606.00	12.28	185.15	4,521.45	-747.53	-41.18	223.14	1.43
4,701.00	10.23	183.93	4,614.62	-766.01	-42.66	229.11	2.17
4,796.00	10.10	184.44	4,708.12	-782.74	-43.89	234.39	0.17
4,891.00	9.98	176.46	4,801.67	-799.26	-44.02	238.58	1.47
4,987.00	9.54	176.24	4,896.28	-815.50	-42.99	241.55	0.46

Design Report for Wells Ranch AA26-62-1HN - Final Surveys

Measured Depth (usft)	Inclination (°)	Azimuth (°)	Vertical Depth (usft)	+N/-S (usft)	+E/-W (usft)	Vertical Section (usft)	Dogleg Rate (°/100usft)
5,082.00	10.11	178.06	4,989.89	-831.69	-42.19	244.75	0.68
5,176.00	9.32	188.08	5,082.55	-847.47	-42.98	249.38	1.98
5,271.00	8.41	183.90	5,176.41	-862.02	-44.53	254.45	1.17
5,365.00	9.14	180.33	5,269.31	-876.34	-45.04	258.46	0.97
5,461.00	9.03	182.69	5,364.11	-891.49	-45.44	262.56	0.40
5,556.00	6.91	181.67	5,458.19	-904.65	-45.96	266.28	2.24
5,651.00	5.49	174.76	5,552.63	-914.89	-45.71	268.55	1.69
5,738.00	8.46	177.13	5,638.98	-925.43	-45.01	270.46	3.43
5,833.00	8.93	188.58	5,732.89	-939.70	-45.76	274.68	1.88
5,928.00	10.64	175.52	5,826.52	-955.74	-46.17	279.02	2.94
6,023.00	10.81	173.56	5,919.86	-973.34	-44.49	281.69	0.42
6,118.00	9.12	175.44	6,013.42	-989.69	-42.89	284.16	1.81
6,165.00	10.98	181.11	6,059.70	-997.88	-42.68	285.96	4.48
6,213.00	15.79	190.08	6,106.39	-1,008.89	-43.91	289.85	10.89
6,260.00	19.47	199.08	6,151.18	-1,022.60	-47.60	296.78	9.72
6,308.00	22.61	209.71	6,195.99	-1,038.18	-54.79	307.57	10.27
6,355.00	24.93	221.82	6,239.03	-1,053.42	-65.88	322.06	11.47
6,403.00	27.63	233.96	6,282.09	-1,067.52	-81.64	340.80	12.50
6,450.00	30.63	243.52	6,323.17	-1,079.28	-101.18	362.63	11.76
6,498.00	35.14	245.80	6,363.47	-1,090.40	-124.74	388.19	9.74
6,545.00	40.36	246.68	6,400.62	-1,101.98	-151.07	416.56	11.17
6,593.00	44.12	246.73	6,436.15	-1,114.74	-180.70	448.41	7.83
6,640.00	47.25	246.97	6,468.98	-1,127.95	-211.62	481.63	6.67
6,688.00	52.00	243.54	6,500.07	-1,143.29	-244.80	517.55	11.29
6,735.00	55.06	243.34	6,528.00	-1,160.19	-278.60	554.46	6.52
6,783.00	60.03	242.61	6,553.75	-1,178.59	-314.67	593.94	10.43
6,830.00	65.20	241.42	6,575.36	-1,198.17	-351.50	634.45	11.23
6,878.00	67.92	240.82	6,594.46	-1,219.44	-390.06	677.04	5.78
6,925.00	71.42	242.44	6,610.78	-1,240.38	-428.83	719.77	8.12
6,973.00	74.05	246.08	6,625.03	-1,260.27	-470.11	764.66	9.08
7,020.00	76.26	248.10	6,637.07	-1,277.95	-511.96	809.56	6.27
7,068.00	77.49	251.84	6,647.98	-1,293.95	-555.87	856.06	8.01
7,115.00	79.74	255.15	6,657.26	-1,307.03	-600.04	902.09	8.40
7,180.00	83.25	259.98	6,666.87	-1,320.86	-662.79	966.31	9.12
7,226.00	84.49	261.37	6,671.79	-1,328.27	-707.92	1,011.88	4.03
7" Casing @ 7226' MD, 6671.79' TVD							
7,332.00	87.35	264.55	6,679.33	-1,341.22	-812.83	1,116.77	4.03
7,426.00	88.09	266.97	6,683.07	-1,348.16	-906.49	1,209.27	2.69
7,521.00	88.46	268.55	6,685.93	-1,351.87	-1,001.37	1,302.17	1.71
7,616.00	87.75	270.28	6,689.07	-1,352.84	-1,096.31	1,394.45	1.97
7,711.00	89.01	270.28	6,691.76	-1,352.38	-1,191.27	1,486.40	1.33
7,807.00	88.68	270.90	6,693.70	-1,351.39	-1,287.24	1,579.20	0.73
7,901.00	90.43	270.61	6,694.43	-1,350.15	-1,381.23	1,670.02	1.89
7,995.00	90.37	272.19	6,693.77	-1,347.86	-1,475.19	1,760.56	1.68
8,090.00	89.14	270.48	6,694.18	-1,345.64	-1,570.16	1,852.08	2.22
8,185.00	90.68	270.51	6,694.32	-1,344.82	-1,665.16	1,943.98	1.62
8,280.00	90.43	271.80	6,693.40	-1,342.91	-1,760.13	2,035.59	1.38
8,375.00	88.36	271.95	6,694.41	-1,339.80	-1,855.07	2,126.87	2.18
8,469.00	89.94	273.40	6,695.80	-1,335.41	-1,948.95	2,216.81	2.28
8,564.00	89.75	269.80	6,696.06	-1,332.76	-2,043.90	2,308.21	3.79
8,659.00	89.07	268.13	6,697.04	-1,334.48	-2,138.87	2,400.71	1.90

Design Report for Wells Ranch AA26-62-1HN - Final Surveys

Measured Depth (usft)	Inclination (°)	Azimuth (°)	Vertical Depth (usft)	+N/-S (usft)	+E/-W (usft)	Vertical Section (usft)	Dogleg Rate (°/100usft)
8,754.00	89.88	268.81	6,697.91	-1,337.01	-2,233.83	2,493.40	1.11
8,849.00	89.94	269.86	6,698.06	-1,338.12	-2,328.83	2,585.76	1.11
8,944.00	88.15	270.81	6,699.64	-1,337.56	-2,423.81	2,677.71	2.13
9,039.00	88.83	270.68	6,702.14	-1,336.33	-2,518.76	2,769.47	0.73
9,133.00	90.83	270.60	6,702.42	-1,335.28	-2,612.75	2,860.33	2.13
9,229.00	90.55	270.00	6,701.27	-1,334.77	-2,708.75	2,953.27	0.69
9,323.00	89.17	269.74	6,701.50	-1,334.99	-2,802.74	3,044.46	1.49
9,418.00	89.17	269.90	6,702.87	-1,335.28	-2,897.73	3,136.62	0.17
9,513.00	89.66	270.03	6,703.84	-1,335.34	-2,992.73	3,228.73	0.53
9,608.00	89.91	270.08	6,704.20	-1,335.25	-3,087.73	3,320.81	0.27
9,703.00	89.94	268.76	6,704.32	-1,336.21	-3,182.72	3,413.14	1.39
9,798.00	90.22	268.27	6,704.19	-1,338.67	-3,277.69	3,505.82	0.59
9,893.00	88.64	268.74	6,705.14	-1,341.15	-3,372.65	3,598.49	1.74
9,988.00	89.60	269.19	6,706.59	-1,342.87	-3,467.62	3,690.98	1.12
10,083.00	88.83	269.10	6,707.90	-1,344.29	-3,562.60	3,783.41	0.82
10,177.00	89.85	269.22	6,708.98	-1,345.66	-3,656.58	3,874.87	1.09
10,272.00	89.41	269.79	6,709.59	-1,346.49	-3,751.57	3,967.17	0.76
10,367.00	90.52	269.15	6,709.65	-1,347.36	-3,846.57	4,059.48	1.35
10,462.00	90.00	269.03	6,709.22	-1,348.87	-3,941.55	4,151.94	0.56
10,557.00	88.95	269.49	6,710.09	-1,350.10	-4,036.54	4,244.33	1.21
10,651.00	90.09	269.39	6,710.88	-1,351.02	-4,130.53	4,335.68	1.22
10,746.00	88.46	271.10	6,712.08	-1,350.61	-4,225.52	4,427.66	2.49
10,841.00	89.23	271.45	6,713.99	-1,348.50	-4,320.47	4,519.21	0.89
10,936.00	89.75	271.44	6,714.84	-1,346.10	-4,415.44	4,610.69	0.55
11,031.00	90.52	271.56	6,714.62	-1,343.62	-4,510.40	4,702.15	0.82
11,126.00	91.54	271.50	6,712.91	-1,341.08	-4,605.35	4,793.58	1.08
11,221.00	89.10	269.50	6,712.38	-1,340.25	-4,700.34	4,885.46	3.32
11,316.00	90.06	269.99	6,713.07	-1,340.67	-4,795.33	4,977.66	1.13
11,411.00	91.42	270.28	6,711.85	-1,340.45	-4,890.32	5,069.70	1.46
11,506.00	91.82	270.73	6,709.16	-1,339.61	-4,985.28	5,161.56	0.63
11,601.00	89.85	271.19	6,707.78	-1,338.02	-5,080.25	5,253.24	2.13
11,696.00	89.20	270.81	6,708.56	-1,336.36	-5,175.23	5,344.92	0.79
11,747.00	89.35	270.83	6,709.21	-1,335.63	-5,226.22	5,394.18	0.30
Final MWD Survey @ 11747.00ft							
11,808.00	89.35	270.83	6,709.90	-1,334.75	-5,287.21	5,453.09	0.00
Straight Line Proj @ 11808' MD,							

Design Annotations

Measured Depth (usft)	Vertical Depth (usft)	Local Coordinates		Comment
		+N/-S (usft)	+E/-W (usft)	
930.00	929.96	3.40	-1.56	Tie-On to Surface Gyros @ 930.00ft
1,011.00	1,010.96	3.87	-1.71	First MWD Survey @ 1011.00ft
11,747.00	6,709.21	-1,335.63	-5,226.22	Final MWD Survey @ 11747.00ft
11,808.00	6,709.90	-1,334.75	-5,287.21	Straight Line Proj @ 11808' MD,

Design Report for Wells Ranch AA26-62-1HN - Final Surveys

Vertical Section Information

Angle Type	Target	Azimuth (°)	Origin Type	Origin +N/_S (usft)	Origin +E/-W (usft)	Start TVD (usft)
Target	Wells Ranch AA26-62-1HN_Rev C0_BHL Tgt	255.81	Slot	0.00	0.00	0.00

Survey tool program

From (usft)	To (usft)	Survey/Plan	Survey Tool
252.00	930.00	Vaughn ESS Surveys	Flexi-Shot
1,011.00	7,180.00	Sperry MWD Surveys - Vert/Build	MWD
7,332.00	11,747.00	Sperry MWD Surveys - Lateral	MWD

Casing Details

Measured Depth (usft)	Vertical Depth (usft)	Name	Casing Diameter (")	Hole Diameter (")
7,226.00	6,671.79	7" Casing @ 7226' MD, 6671.79' TVD	7	8-3/4

Design Report for Wells Ranch AA26-62-1HN - Final Surveys

Wellbore Targets

Target Name - hit/miss target - Shape	Dip Angle (°)	Dip Dir. (°)	TVD (usft)	+N/-S (usft)	+E/-W (usft)	Northing (usft)	Easting (usft)	Latitude	Longitude
NW/SW (Wells Ranch	0.00	0.00	2.00	225.86	-2.82	1,410,610.60	3,307,745.56	40° 27' 18.936 N	104° 23' 38.760 W
- actual wellpath misses target center by 225.88usft at 3.33usft MD (3.33 TVD, 0.00 N, 0.00 E)									
- Polygon									
Point 1			2.00	-1,896.14	-5,431.73	1,408,714.53	3,302,314.03		
Point 2			2.00	-1,863.48	-135.41	1,408,747.19	3,307,610.16		
Point 3			2.00	3,451.71	-182.19	1,414,062.18	3,307,563.38		
Point 4			2.00	3,415.48	-5,471.76	1,414,025.95	3,302,274.00		
NW/SW (Wells Ranch	0.00	0.00	2.00	225.86	-2.82	1,410,610.60	3,307,745.56	40° 27' 18.936 N	104° 23' 38.760 W
- actual wellpath misses target center by 225.88usft at 3.33usft MD (3.33 TVD, 0.00 N, 0.00 E)									
- Polygon									
Point 1			2.00	-1,403.48	324.59	1,409,207.17	3,308,070.14		
Point 2			2.00	-1,337.18	4,678.23	1,409,273.47	3,312,423.62		
Point 3			2.00	3,047.32	4,649.94	1,413,657.81	3,312,395.33		
Point 4			2.00	2,990.21	277.81	1,413,600.70	3,308,023.36		
NW/SW (Wells Ranch	0.00	0.00	2.00	225.86	-2.82	1,410,610.60	3,307,745.56	40° 27' 18.936 N	104° 23' 38.760 W
- actual wellpath misses target center by 225.88usft at 3.33usft MD (3.33 TVD, 0.00 N, 0.00 E)									
- Polygon									
Point 1			2.00	-1,863.48	-135.41	1,408,747.19	3,307,610.16		
Point 2			2.00	-1,797.18	5,138.23	1,408,813.48	3,312,883.60		
Point 3			2.00	3,507.32	5,109.94	1,414,117.79	3,312,855.31		
Point 4			2.00	3,451.71	-182.19	1,414,062.18	3,307,563.38		
NW/SW (Wells Ranch	0.00	0.00	2.00	225.86	-2.82	1,410,610.60	3,307,745.56	40° 27' 18.936 N	104° 23' 38.760 W
- actual wellpath misses target center by 225.88usft at 3.33usft MD (3.33 TVD, 0.00 N, 0.00 E)									
- Polygon									
Point 1			2.00	-1,436.14	-4,971.73	1,409,174.51	3,302,774.01		
Point 2			2.00	-1,403.48	-595.41	1,409,207.17	3,307,150.17		
Point 3			2.00	2,990.21	-642.19	1,413,600.70	3,307,103.40		
Point 4			2.00	2,958.48	-5,008.01	1,413,568.97	3,302,737.74		
Wells Ranch AA26-62-	0.00	0.00	6,679.35	-1,337.00	-715.00	1,409,047.79	3,307,033.41	40° 27' 3.581 N	104° 23' 48.224 W
- actual wellpath misses target center by 10.16usft at 7234.62usft MD (6672.60 TVD, -1329.54 N, -716.40 E)									
- Point									
Wells Ranch AA26-62-	0.00	0.00	6,714.26	-1,336.94	-5,288.34	1,409,047.85	3,302,460.24	40° 27' 4.140 N	104° 24' 47.376 W
- actual wellpath misses target center by 5.01usft at 11808.00usft MD (6709.90 TVD, -1334.75 N, -5287.21 E)									
- Point									

Directional Difficulty Index

Average Dogleg over Survey:	2.10 °/100usft	Maximum Dogleg over Survey:	12.50 °/100usft at 6,403.00 usft
Net Tortousity applicable to Plans:	1.17 °/100usft	Directional Difficulty Index:	6.443

Audit Info

North Reference Sheet for Sec. 25-T6N-R63W - NW/SW (Wells Ranch AA26 PAD) - Wells Ranch AA26-62-1HN

All data is in US Feet unless otherwise stated. Directions and Coordinates are relative to Grid North Reference.

Vertical Depths are relative to RKB 24 ft. @ 4817.00usft (H&P 322). Northing and Easting are relative to Wells Ranch AA26-62-1HN - Slot A7

Coordinate System is US State Plane 1983, Colorado Northern Zone using datum North American Datum 1983, ellipsoid GRS 1980

Projection method is Lambert Conformal Conic (2 parallel)

Central Meridian is 105° 30' 0.000 W°, Longitude Origin:0° 0' 0.000 E°, Latitude Origin:40° 47' 0.000 N°

False Easting: 3,000,000.00usft, False Northing: 1,000,000.00usft, Scale Reduction: 0.99996316

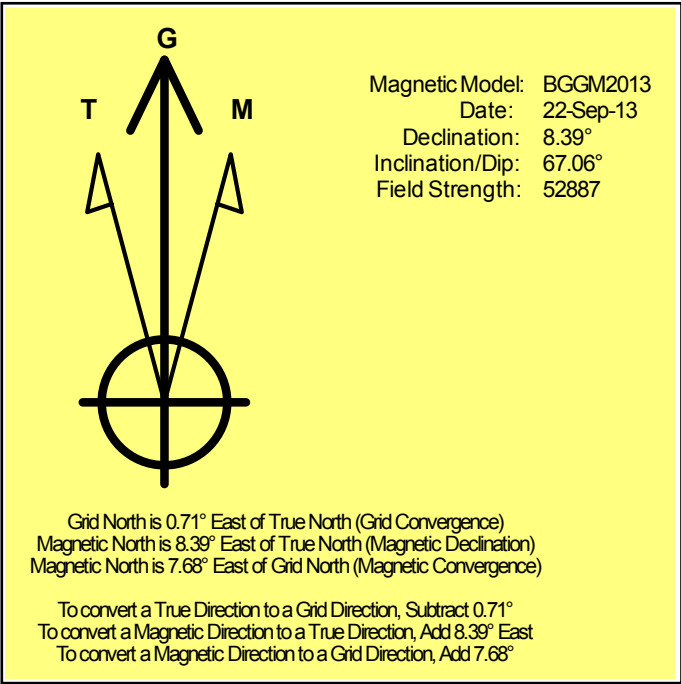
Grid Coordinates of Well: 1,410,384.75 usft N, 3,307,748.38 usft E

Geographical Coordinates of Well: 40° 27' 16.70" N, 104° 23' 38.76" W

Grid Convergence at Surface is: 0.71°

Based upon Minimum Curvature type calculations, at a Measured Depth of 11,808.00usft the Bottom Hole Displacement is 5,453.09usft in the Direction of 255.83° (Grid).

Magnetic Convergence at surface is: -7.68° (22 September 2013, BGGM2013)



Noble Energy

Weld County, CO (NAD 83)

Sec. 25-T6N-R63W - NW/SW (Wells Ranch AA26 PAD)

Wells Ranch AA26-62-1HN - A7

Design: Final Surveys

Sperry Drilling Services

Geodetic Report

21 November, 2013

Well Coordinates: 1,410,384.75 N, 3,307,748.38 E (40° 27' 16.70" N, 104° 23' 38.76" W)

Ground Level: 4,793.00 usft

Local Coordinate Origin:

Viewing Datum:

TVDs to System:

North Reference:

Unit System:

Geodetic Scale Factor Applied

Version: 5000.1 Build: 70

Centered on Well Wells Ranch AA26-62-1HN - Slot A7

RKB 24 ft. @ 4817.00usft (H&P 322)

N

Grid

API - US Survey Feet - Custom

HALLIBURTON

Design Report for Wells Ranch AA26-62-1HN - Final Surveys

Measured			Vertical	Local Coordinates		Geographic Coordinates		UTM Coordinates	
Depth (usft)	Inclination (°)	Azimuth (°)	Depth (usft)	+N/-S (usft)	+E/-W (usft)	Latitude (usft)	Longitude (usft)	Northing (usft)	Easting (usft)
0.00	0.00	0.00	0.00	0.00	0.00	40° 27' 16.704 N	104° 23' 38.760 W	1,410,384.75	3,307,748.38
252.00	1.10	307.10	251.98	1.46	-1.93	40° 27' 16.719 N	104° 23' 38.785 W	1,410,386.20	3,307,746.45
503.00	0.20	60.70	502.97	3.13	-3.47	40° 27' 16.735 N	104° 23' 38.804 W	1,410,387.87	3,307,744.91
745.00	0.50	88.80	744.97	3.36	-2.04	40° 27' 16.737 N	104° 23' 38.786 W	1,410,388.10	3,307,746.34
930.00	0.20	274.50	929.96	3.40	-1.56	40° 27' 16.738 N	104° 23' 38.780 W	1,410,388.14	3,307,746.82
1,011.00	0.65	358.64	1,010.96	3.87	-1.71	40° 27' 16.742 N	104° 23' 38.781 W	1,410,388.61	3,307,746.67
1,105.00	2.40	205.84	1,104.94	2.63	-2.58	40° 27' 16.730 N	104° 23' 38.793 W	1,410,387.38	3,307,745.80
1,197.00	4.95	194.25	1,196.74	-2.95	-4.40	40° 27' 16.675 N	104° 23' 38.817 W	1,410,381.79	3,307,743.98
1,291.00	8.00	191.71	1,290.13	-13.29	-6.73	40° 27' 16.573 N	104° 23' 38.849 W	1,410,371.46	3,307,741.66
1,384.00	10.55	186.82	1,381.91	-28.08	-9.05	40° 27' 16.428 N	104° 23' 38.882 W	1,410,356.66	3,307,739.33
1,477.00	13.80	187.56	1,472.81	-47.54	-11.52	40° 27' 16.236 N	104° 23' 38.917 W	1,410,337.21	3,307,736.86
1,572.00	15.11	182.50	1,564.80	-71.14	-13.55	40° 27' 16.003 N	104° 23' 38.947 W	1,410,313.61	3,307,734.83
1,667.00	14.79	182.35	1,656.59	-95.63	-14.59	40° 27' 15.761 N	104° 23' 38.964 W	1,410,289.12	3,307,733.79
1,761.00	13.71	180.99	1,747.69	-118.75	-15.27	40° 27' 15.532 N	104° 23' 38.977 W	1,410,266.00	3,307,733.11
1,856.00	14.34	182.12	1,839.86	-141.77	-15.90	40° 27' 15.305 N	104° 23' 38.989 W	1,410,242.98	3,307,732.48
1,951.00	14.75	184.61	1,931.82	-165.58	-17.31	40° 27' 15.070 N	104° 23' 39.011 W	1,410,219.17	3,307,731.07
2,046.00	13.41	184.41	2,023.96	-188.62	-19.13	40° 27' 14.843 N	104° 23' 39.038 W	1,410,196.14	3,307,729.25
2,141.00	12.28	177.97	2,116.59	-209.70	-19.62	40° 27' 14.634 N	104° 23' 39.048 W	1,410,175.05	3,307,728.76
2,236.00	13.96	183.41	2,209.11	-231.24	-19.94	40° 27' 14.422 N	104° 23' 39.055 W	1,410,153.52	3,307,728.44
2,330.00	11.93	182.88	2,300.71	-252.26	-21.11	40° 27' 14.214 N	104° 23' 39.074 W	1,410,132.49	3,307,727.28
2,425.00	12.60	176.24	2,393.55	-272.41	-20.92	40° 27' 14.015 N	104° 23' 39.074 W	1,410,112.35	3,307,727.46
2,520.00	12.72	177.79	2,486.24	-293.20	-19.84	40° 27' 13.809 N	104° 23' 39.064 W	1,410,091.56	3,307,728.55
2,615.00	13.32	175.16	2,578.80	-314.55	-18.51	40° 27' 13.598 N	104° 23' 39.050 W	1,410,070.20	3,307,729.87
2,710.00	13.85	180.95	2,671.14	-336.83	-17.78	40° 27' 13.378 N	104° 23' 39.044 W	1,410,047.93	3,307,730.61
2,805.00	12.61	181.32	2,763.62	-358.57	-18.20	40° 27' 13.163 N	104° 23' 39.053 W	1,410,026.19	3,307,730.18
2,900.00	13.92	182.49	2,856.08	-380.35	-18.94	40° 27' 12.948 N	104° 23' 39.066 W	1,410,004.41	3,307,729.44
2,995.00	13.77	177.98	2,948.33	-403.07	-19.04	40° 27' 12.724 N	104° 23' 39.071 W	1,409,981.69	3,307,729.35
3,090.00	13.67	186.05	3,040.62	-425.53	-19.82	40° 27' 12.502 N	104° 23' 39.085 W	1,409,959.23	3,307,728.56
3,184.00	11.42	185.19	3,132.37	-445.85	-21.83	40° 27' 12.301 N	104° 23' 39.114 W	1,409,938.92	3,307,726.55
3,279.00	12.53	180.59	3,225.31	-465.52	-22.79	40° 27' 12.107 N	104° 23' 39.130 W	1,409,919.24	3,307,725.59
3,374.00	12.22	186.38	3,318.10	-485.82	-24.01	40° 27' 11.907 N	104° 23' 39.149 W	1,409,898.95	3,307,724.37
3,469.00	11.89	186.89	3,411.01	-505.52	-26.31	40° 27' 11.712 N	104° 23' 39.182 W	1,409,879.24	3,307,722.08
3,564.00	10.77	188.25	3,504.16	-524.02	-28.75	40° 27' 11.530 N	104° 23' 39.216 W	1,409,860.74	3,307,719.63
3,658.00	11.23	182.22	3,596.43	-541.86	-30.37	40° 27' 11.354 N	104° 23' 39.240 W	1,409,842.90	3,307,718.01
3,753.00	12.47	180.86	3,689.40	-561.36	-30.88	40° 27' 11.161 N	104° 23' 39.250 W	1,409,823.40	3,307,717.50
3,848.00	14.21	183.05	3,781.84	-583.26	-31.65	40° 27' 10.945 N	104° 23' 39.263 W	1,409,801.50	3,307,716.73
3,943.00	15.74	181.83	3,873.61	-607.79	-32.69	40° 27' 10.703 N	104° 23' 39.281 W	1,409,776.98	3,307,715.70
4,038.00	14.18	184.48	3,965.39	-632.27	-34.01	40° 27' 10.461 N	104° 23' 39.302 W	1,409,752.50	3,307,714.38
4,132.00	12.13	181.92	4,056.92	-653.62	-35.24	40° 27' 10.250 N	104° 23' 39.321 W	1,409,731.15	3,307,713.15
4,227.00	11.82	181.12	4,149.85	-673.32	-35.76	40° 27' 10.055 N	104° 23' 39.331 W	1,409,711.45	3,307,712.62
4,322.00	11.46	181.95	4,242.90	-692.48	-36.27	40° 27' 9.866 N	104° 23' 39.341 W	1,409,692.29	3,307,712.11
4,417.00	10.63	182.46	4,336.14	-710.67	-36.97	40° 27' 9.686 N	104° 23' 39.353 W	1,409,674.10	3,307,711.41

Design Report for Wells Ranch AA26-62-1HN - Final Surveys

Measured Depth (usft)	Inclination (°)	Azimuth (°)	Vertical Depth (usft)	Local Coordinates		Geographic Coordinates		UTM Coordinates	
				+N/-S (usft)	+E/-W (usft)	Latitude (usft)	Longitude (usft)	Northing (usft)	Easting (usft)
4,512.00	11.22	189.18	4,429.42	-728.55	-38.82	40° 27' 9.510 N	104° 23' 39.380 W	1,409,656.22	3,307,709.56
4,606.00	12.28	185.15	4,521.45	-747.53	-41.18	40° 27' 9.323 N	104° 23' 39.413 W	1,409,637.24	3,307,707.21
4,701.00	10.23	183.93	4,614.62	-766.01	-42.66	40° 27' 9.140 N	104° 23' 39.435 W	1,409,618.76	3,307,705.72
4,796.00	10.10	184.44	4,708.12	-782.74	-43.89	40° 27' 8.975 N	104° 23' 39.454 W	1,409,602.04	3,307,704.50
4,891.00	9.98	176.46	4,801.67	-799.26	-44.02	40° 27' 8.812 N	104° 23' 39.458 W	1,409,585.52	3,307,704.36
4,987.00	9.54	176.24	4,896.28	-815.50	-42.99	40° 27' 8.651 N	104° 23' 39.448 W	1,409,569.28	3,307,705.40
5,082.00	10.11	178.06	4,989.89	-831.69	-42.19	40° 27' 8.491 N	104° 23' 39.440 W	1,409,553.09	3,307,706.19
5,176.00	9.32	188.08	5,082.55	-847.47	-42.98	40° 27' 8.336 N	104° 23' 39.453 W	1,409,537.31	3,307,705.40
5,271.00	8.41	183.90	5,176.41	-862.02	-44.53	40° 27' 8.192 N	104° 23' 39.475 W	1,409,522.76	3,307,703.85
5,365.00	9.14	180.33	5,269.31	-876.34	-45.04	40° 27' 8.051 N	104° 23' 39.484 W	1,409,508.44	3,307,703.34
5,461.00	9.03	182.69	5,364.11	-891.49	-45.44	40° 27' 7.901 N	104° 23' 39.492 W	1,409,493.29	3,307,702.94
5,556.00	6.91	181.67	5,458.19	-904.65	-45.96	40° 27' 7.771 N	104° 23' 39.500 W	1,409,480.13	3,307,702.43
5,651.00	5.49	174.76	5,552.63	-914.89	-45.71	40° 27' 7.670 N	104° 23' 39.499 W	1,409,469.89	3,307,702.67
5,738.00	8.46	177.13	5,638.98	-925.43	-45.01	40° 27' 7.565 N	104° 23' 39.491 W	1,409,459.35	3,307,703.37
5,833.00	8.93	188.58	5,732.89	-939.70	-45.76	40° 27' 7.425 N	104° 23' 39.503 W	1,409,445.08	3,307,702.62
5,928.00	10.64	175.52	5,826.52	-955.74	-46.17	40° 27' 7.266 N	104° 23' 39.511 W	1,409,429.04	3,307,702.21
6,023.00	10.81	173.56	5,919.86	-973.34	-44.49	40° 27' 7.092 N	104° 23' 39.492 W	1,409,411.45	3,307,703.89
6,118.00	9.12	175.44	6,013.42	-989.69	-42.89	40° 27' 6.930 N	104° 23' 39.474 W	1,409,395.09	3,307,705.49
6,165.00	10.98	181.11	6,059.70	-997.88	-42.68	40° 27' 6.849 N	104° 23' 39.473 W	1,409,386.90	3,307,705.70
6,213.00	15.79	190.08	6,106.39	-1,008.89	-43.91	40° 27' 6.741 N	104° 23' 39.491 W	1,409,375.89	3,307,704.47
6,260.00	19.47	199.08	6,151.18	-1,022.60	-47.60	40° 27' 6.606 N	104° 23' 39.541 W	1,409,362.19	3,307,700.79
6,308.00	22.61	209.71	6,195.99	-1,038.18	-54.79	40° 27' 6.453 N	104° 23' 39.636 W	1,409,346.60	3,307,693.60
6,355.00	24.93	221.82	6,239.03	-1,053.42	-65.88	40° 27' 6.303 N	104° 23' 39.782 W	1,409,331.36	3,307,682.50
6,403.00	27.63	233.96	6,282.09	-1,067.52	-81.64	40° 27' 6.166 N	104° 23' 39.988 W	1,409,317.26	3,307,666.75
6,450.00	30.63	243.52	6,323.17	-1,079.28	-101.18	40° 27' 6.052 N	104° 23' 40.243 W	1,409,305.50	3,307,647.20
6,498.00	35.14	245.80	6,363.47	-1,090.40	-124.74	40° 27' 5.945 N	104° 23' 40.549 W	1,409,294.38	3,307,623.64
6,545.00	40.36	246.68	6,400.62	-1,101.98	-151.07	40° 27' 5.834 N	104° 23' 40.892 W	1,409,282.81	3,307,597.31
6,593.00	44.12	246.73	6,436.15	-1,114.74	-180.70	40° 27' 5.712 N	104° 23' 41.277 W	1,409,270.05	3,307,567.68
6,640.00	47.25	246.97	6,468.98	-1,127.95	-211.62	40° 27' 5.585 N	104° 23' 41.679 W	1,409,256.83	3,307,536.77
6,688.00	52.00	243.54	6,500.07	-1,143.29	-244.80	40° 27' 5.437 N	104° 23' 42.111 W	1,409,241.50	3,307,503.59
6,735.00	55.06	243.34	6,528.00	-1,160.19	-278.60	40° 27' 5.275 N	104° 23' 42.551 W	1,409,224.60	3,307,469.79
6,783.00	60.03	242.61	6,553.75	-1,178.59	-314.67	40° 27' 5.097 N	104° 23' 43.020 W	1,409,206.20	3,307,433.73
6,830.00	65.20	241.42	6,575.36	-1,198.17	-351.50	40° 27' 4.908 N	104° 23' 43.500 W	1,409,186.61	3,307,396.89
6,878.00	67.92	240.82	6,594.46	-1,219.44	-390.06	40° 27' 4.703 N	104° 23' 44.002 W	1,409,165.35	3,307,358.34
6,925.00	71.42	242.44	6,610.78	-1,240.38	-428.83	40° 27' 4.501 N	104° 23' 44.507 W	1,409,144.42	3,307,319.57
6,973.00	74.05	246.08	6,625.03	-1,260.27	-470.11	40° 27' 4.309 N	104° 23' 45.044 W	1,409,124.52	3,307,278.28
7,020.00	76.26	248.10	6,637.07	-1,277.95	-511.96	40° 27' 4.140 N	104° 23' 45.588 W	1,409,106.85	3,307,236.44
7,068.00	77.49	251.84	6,647.98	-1,293.95	-555.87	40° 27' 3.987 N	104° 23' 46.158 W	1,409,090.84	3,307,192.53
7,115.00	79.74	255.15	6,657.26	-1,307.03	-600.04	40° 27' 3.863 N	104° 23' 46.732 W	1,409,077.76	3,307,148.37
7,180.00	83.25	259.98	6,666.87	-1,320.86	-662.79	40° 27' 3.734 N	104° 23' 47.546 W	1,409,063.94	3,307,085.62
7,226.00	84.49	261.37	6,671.79	-1,328.27	-707.92	40° 27' 3.667 N	104° 23' 48.131 W	1,409,056.53	3,307,040.49
7,332.00	87.35	264.55	6,679.33	-1,341.22	-812.83	40° 27' 3.552 N	104° 23' 49.490 W	1,409,043.58	3,306,935.58

Design Report for Wells Ranch AA26-62-1HN - Final Surveys

Measured Depth (usft)	Inclination (°)	Azimuth (°)	Vertical Depth (usft)	Local Coordinates		Geographic Coordinates		UTM Coordinates	
				+N/-S (usft)	+E/-W (usft)	Latitude (usft)	Longitude (usft)	Northing (usft)	Easting (usft)
7,426.00	88.09	266.97	6,683.07	-1,348.16	-906.49	40° 27' 3.495 N	104° 23' 50.702 W	1,409,036.63	3,306,841.93
7,521.00	88.46	268.55	6,685.93	-1,351.87	-1,001.37	40° 27' 3.470 N	104° 23' 51.930 W	1,409,032.92	3,306,747.05
7,616.00	87.75	270.28	6,689.07	-1,352.84	-1,096.31	40° 27' 3.472 N	104° 23' 53.158 W	1,409,031.95	3,306,652.11
7,711.00	89.01	270.28	6,691.76	-1,352.38	-1,191.27	40° 27' 3.488 N	104° 23' 54.386 W	1,409,032.42	3,306,557.16
7,807.00	88.68	270.90	6,693.70	-1,351.39	-1,287.24	40° 27' 3.509 N	104° 23' 55.627 W	1,409,033.40	3,306,461.19
7,901.00	90.43	270.61	6,694.43	-1,350.15	-1,381.23	40° 27' 3.533 N	104° 23' 56.843 W	1,409,034.64	3,306,367.20
7,995.00	90.37	272.19	6,693.77	-1,347.86	-1,475.19	40° 27' 3.567 N	104° 23' 58.058 W	1,409,036.94	3,306,273.24
8,090.00	89.14	270.48	6,694.18	-1,345.64	-1,570.16	40° 27' 3.601 N	104° 23' 59.286 W	1,409,039.15	3,306,178.28
8,185.00	90.68	270.51	6,694.32	-1,344.82	-1,665.16	40° 27' 3.621 N	104° 24' 0.514 W	1,409,039.97	3,306,083.29
8,280.00	90.43	271.80	6,693.40	-1,342.91	-1,760.13	40° 27' 3.651 N	104° 24' 1.742 W	1,409,041.89	3,305,988.32
8,375.00	88.36	271.95	6,694.41	-1,339.80	-1,855.07	40° 27' 3.694 N	104° 24' 2.970 W	1,409,045.00	3,305,893.38
8,469.00	89.94	273.40	6,695.80	-1,335.41	-1,948.95	40° 27' 3.748 N	104° 24' 4.183 W	1,409,049.38	3,305,799.50
8,564.00	89.75	269.80	6,696.06	-1,332.76	-2,043.90	40° 27' 3.786 N	104° 24' 5.411 W	1,409,052.03	3,305,704.56
8,659.00	89.07	268.13	6,697.04	-1,334.48	-2,138.87	40° 27' 3.781 N	104° 24' 6.640 W	1,409,050.32	3,305,609.59
8,754.00	89.88	268.81	6,697.91	-1,337.01	-2,233.83	40° 27' 3.767 N	104° 24' 7.868 W	1,409,047.78	3,305,514.63
8,849.00	89.94	269.86	6,698.06	-1,338.12	-2,328.83	40° 27' 3.768 N	104° 24' 9.097 W	1,409,046.68	3,305,419.64
8,944.00	88.15	270.81	6,699.64	-1,337.56	-2,423.81	40° 27' 3.785 N	104° 24' 10.326 W	1,409,047.23	3,305,324.66
9,039.00	88.83	270.68	6,702.14	-1,336.33	-2,518.76	40° 27' 3.809 N	104° 24' 11.554 W	1,409,048.47	3,305,229.71
9,133.00	90.83	270.60	6,702.42	-1,335.28	-2,612.75	40° 27' 3.831 N	104° 24' 12.769 W	1,409,049.52	3,305,135.72
9,229.00	90.55	270.00	6,701.27	-1,334.77	-2,708.75	40° 27' 3.848 N	104° 24' 14.011 W	1,409,050.02	3,305,039.74
9,323.00	89.17	269.74	6,701.50	-1,334.99	-2,802.74	40° 27' 3.857 N	104° 24' 15.226 W	1,409,049.81	3,304,945.74
9,418.00	89.17	269.90	6,702.87	-1,335.28	-2,897.73	40° 27' 3.866 N	104° 24' 16.455 W	1,409,049.51	3,304,850.76
9,513.00	89.66	270.03	6,703.84	-1,335.34	-2,992.73	40° 27' 3.877 N	104° 24' 17.684 W	1,409,049.45	3,304,755.77
9,608.00	89.91	270.08	6,704.20	-1,335.25	-3,087.73	40° 27' 3.889 N	104° 24' 18.913 W	1,409,049.54	3,304,660.77
9,703.00	89.94	268.76	6,704.32	-1,336.21	-3,182.72	40° 27' 3.891 N	104° 24' 20.141 W	1,409,048.58	3,304,565.78
9,798.00	90.22	268.27	6,704.19	-1,338.67	-3,277.69	40° 27' 3.879 N	104° 24' 21.370 W	1,409,046.12	3,304,470.82
9,893.00	88.64	268.74	6,705.14	-1,341.15	-3,372.65	40° 27' 3.866 N	104° 24' 22.599 W	1,409,043.64	3,304,375.86
9,988.00	89.60	269.19	6,706.59	-1,342.87	-3,467.62	40° 27' 3.860 N	104° 24' 23.827 W	1,409,041.93	3,304,280.89
10,083.00	88.83	269.10	6,707.90	-1,344.29	-3,562.60	40° 27' 3.858 N	104° 24' 25.056 W	1,409,040.51	3,304,185.91
10,177.00	89.85	269.22	6,708.98	-1,345.66	-3,656.58	40° 27' 3.856 N	104° 24' 26.272 W	1,409,039.13	3,304,091.94
10,272.00	89.41	269.79	6,709.59	-1,346.49	-3,751.57	40° 27' 3.859 N	104° 24' 27.501 W	1,409,038.31	3,303,996.95
10,367.00	90.52	269.15	6,709.65	-1,347.36	-3,846.57	40° 27' 3.862 N	104° 24' 28.729 W	1,409,037.43	3,303,901.96
10,462.00	90.00	269.03	6,709.22	-1,348.87	-3,941.55	40° 27' 3.859 N	104° 24' 29.958 W	1,409,035.92	3,303,806.97
10,557.00	88.95	269.49	6,710.09	-1,350.10	-4,036.54	40° 27' 3.858 N	104° 24' 31.187 W	1,409,034.70	3,303,711.99
10,651.00	90.09	269.39	6,710.88	-1,351.02	-4,130.53	40° 27' 3.860 N	104° 24' 32.403 W	1,409,033.78	3,303,618.00
10,746.00	88.46	271.10	6,712.08	-1,350.61	-4,225.52	40° 27' 3.876 N	104° 24' 33.631 W	1,409,034.18	3,303,523.02
10,841.00	89.23	271.45	6,713.99	-1,348.50	-4,320.47	40° 27' 3.908 N	104° 24' 34.859 W	1,409,036.30	3,303,428.07
10,936.00	89.75	271.44	6,714.84	-1,346.10	-4,415.44	40° 27' 3.944 N	104° 24' 36.087 W	1,409,038.69	3,303,333.11
11,031.00	90.52	271.56	6,714.62	-1,343.62	-4,510.40	40° 27' 3.980 N	104° 24' 37.315 W	1,409,041.18	3,303,238.14
11,126.00	91.54	271.50	6,712.91	-1,341.08	-4,605.35	40° 27' 4.016 N	104° 24' 38.543 W	1,409,043.71	3,303,143.20
11,221.00	89.10	269.50	6,712.38	-1,340.25	-4,700.34	40° 27' 4.036 N	104° 24' 39.771 W	1,409,044.54	3,303,048.22
11,316.00	90.06	269.99	6,713.07	-1,340.67	-4,795.33	40° 27' 4.043 N	104° 24' 41.000 W	1,409,044.12	3,302,953.23

Design Report for Wells Ranch AA26-62-1HN - Final Surveys

Measured Depth (usft)	Inclination (°)	Azimuth (°)	Vertical Depth (usft)	Local Coordinates		Geographic Coordinates		UTM Coordinates	
				+N/-S (usft)	+E/-W (usft)	Latitude (usft)	Longitude (usft)	Northing (usft)	Easting (usft)
11,411.00	91.42	270.28	6,711.85	-1,340.45	-4,890.32	40° 27' 4.057 N	104° 24' 42.229 W	1,409,044.34	3,302,858.24
11,506.00	91.82	270.73	6,709.16	-1,339.61	-4,985.28	40° 27' 4.077 N	104° 24' 43.457 W	1,409,045.18	3,302,763.29
11,601.00	89.85	271.19	6,707.78	-1,338.02	-5,080.25	40° 27' 4.104 N	104° 24' 44.685 W	1,409,046.77	3,302,668.32
11,696.00	89.20	270.81	6,708.56	-1,336.36	-5,175.23	40° 27' 4.132 N	104° 24' 45.913 W	1,409,048.43	3,302,573.34
11,747.00	89.35	270.83	6,709.21	-1,335.63	-5,226.22	40° 27' 4.145 N	104° 24' 46.572 W	1,409,049.16	3,302,522.35
11,808.00	89.35	270.83	6,709.90	-1,334.75	-5,287.21	40° 27' 4.161 N	104° 24' 47.361 W	1,409,050.04	3,302,461.36

Design Annotations

Measured Depth (usft)	Vertical Depth (usft)	Local Coordinates		Comment
		+N/-S (usft)	+E/-W (usft)	
930.00	929.96	3.40	-1.56	Tie-On to Surface Gyros @ 930.00ft
1,011.00	1,010.96	3.87	-1.71	First MWD Survey @ 1011.00ft
11,747.00	6,709.21	-1,335.63	-5,226.22	Final MWD Survey @ 11747.00ft
11,808.00	6,709.90	-1,334.75	-5,287.21	Straight Line Proj @ 11808' MD,

Vertical Section Information

Angle Type	Target	Azimuth (°)	Origin Type	Origin		Start TVD (usft)
				+N/-S (usft)	+E/-W (usft)	
Target	Wells Ranch AA26-62-1HN_Rev C0_BHL Tgt	255.81	Slot	0.00	0.00	0.00

Survey tool program

From (usft)	To (usft)	Survey/Plan	Survey Tool
252.00	930.00	Vaughn ESS Surveys	Flexi-Shot
1,011.00	7,180.00	Sperry MWD Surveys - Vert/Build	MWD
7,332.00	11,747.00	Sperry MWD Surveys - Lateral	MWD

Design Report for Wells Ranch AA26-62-1HN - Final Surveys

Casing Details

Measured Depth (usft)	Vertical Depth (usft)	Name	Casing Diameter (")	Hole Diameter (")
7,226.00	6,671.79	7" Casing @ 7226' MD, 6671.79' TVD	7	8-3/4

Design Targets

Shape	Target Name	TVD (')	Northing (')	Easting (')	+N/-S	+E/-W	Created	Updated
-------	-------------	------------	-----------------	----------------	-------	-------	---------	---------

Directional Difficulty Index

Average Dogleg over Survey:	2.10 °/100usft	Maximum Dogleg over Survey:	12.50 °/100usft at 6,403.00 usft
Net Tortosity applicable to Plans:	1.17 °/100usft	Directional Difficulty Index:	6.443

Audit Info

North Reference Sheet for Sec. 25-T6N-R63W - NW/SW (Wells Ranch AA26 PAD) - Wells Ranch AA26-62-1HN

All data is in US Feet unless otherwise stated. Directions and Coordinates are relative to Grid North Reference.

Vertical Depths are relative to RKB 24 ft. @ 4817.00usft (H&P 322). Northing and Easting are relative to Wells Ranch AA26-62-1HN - Slot A7

Coordinate System is US State Plane 1983, Colorado Northern Zone using datum North American Datum 1983, ellipsoid GRS 1980

Projection method is Lambert Conformal Conic (2 parallel)

Central Meridian is 105° 30' 0.000 W°, Longitude Origin:0° 0' 0.000 E°, Latitude Origin:40° 47' 0.000 N°

False Easting: 3,000,000.00usft, False Northing: 1,000,000.00usft, Scale Reduction: 0.99996316

Grid Coordinates of Well: 1,410,384.75 usft N, 3,307,748.38 usft E

Geographical Coordinates of Well: 40° 27' 16.70" N, 104° 23' 38.76" W

Grid Convergence at Surface is: 0.71°

Based upon Minimum Curvature type calculations, at a Measured Depth of 11,808.00usft

the Bottom Hole Displacement is 5,453.09usft in the Direction of 255.83° (Grid).

Magnetic Convergence at surface is: -7.68° (22 September 2013, , BGGM2013)

