

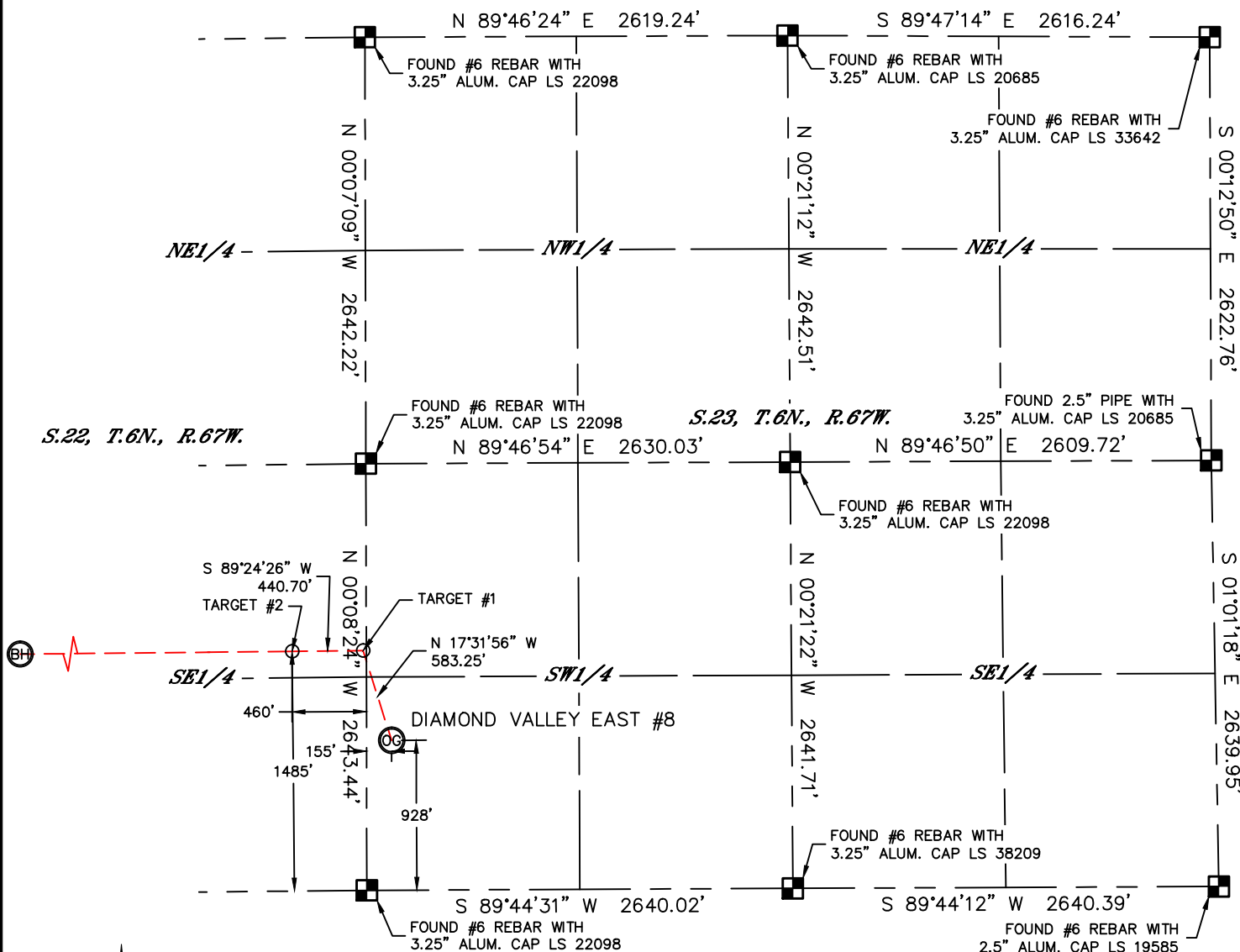


Lat40°, Inc. 1635 Foxtrail Drive, Suite 325 Loveland, CO 970-776-3321

WELL LOCATION CERTIFICATE

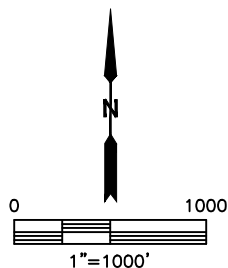
THIS MAP DOES NOT REPRESENT A BOUNDARY SURVEY

SECTION: 23
TOWNSHIP: 6N
RANGE: 67W

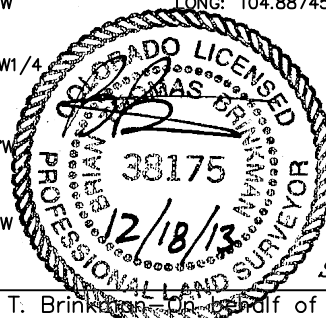


In accordance with a request from Clay Duke with TEKTON ENERGY LLC Lat40°, Inc. has determined the surface location of the DIAMOND VALLEY EAST #8 to be 928' from the SOUTH line and 155' from the WEST line as measured at right angles from the section lines of Section 23, Township 6 North, Range 67 West and the bottom hole to be 1485' from the SOUTH line and 460' from the WEST line as measured at right angles from the section lines of Section 22, Township 6 North, Range 67 West of the Sixth Principal Meridian, County of Weld, State of Colorado.

I hereby state that this Well Location Certificate was prepared by me, or under my direct supervision, that the fieldwork was completed on 8/19/2013, for and on behalf of TEKTON ENERGY LLC That this is not a Land Survey Plat or an Improvement Survey Plat, and that it is not to be relied upon for establishment of fence, building, or other future improvement lines.



- NOTE:
- 1) Bearings shown are Grid Bearings of the Colorado State Plane Coordinate System, North Zone, North American Datum 1983/2007. The lineal dimensions as contained herein are based upon the "U.S. Survey Foot."
 - 2) Ground elevations are based on an observed GPS elevation (NAVD 1988 DATUM).
 - 3) IMPROVEMENTS: See LOCATION DRAWING for all visible improvements within 500' of disturbed area.
 - 4) SURFACE USE: CROP FIELD
 - 5) INSTRUMENT OPERATOR: MARK ANGELL
- NEAREST CULTURAL ITEMS:
BUILDING: 908' SE
BUILDING UNIT: 949' SE
HIGH OCCUPANCY BUILDING UNIT: ±3357' NE
DESIGNATED OUTSIDE ACTIVITY AREA: 5280'+
PUBLIC ROAD: 906' S (CR 66/EASTMAN PK. DR.)
ABOVEGROUND UTILITY: 1349' NE
RAILROAD: 1405' NE
PROPERTY LINE: 155' W
- LEGEND
■ = ALIQUOT MONUMENT AS DESCRIBED
○ = CALCULATED POSITION
- SURFACE LOCATION**
LAT: 40.46775°N
LONG: 104.86981°W
PDOP: 1.7
ELEV: 4769'
1/4, 1/4: SW1/4SW1/4
- BOTTOM HOLE**
LAT: 40.46924°N
LONG: 104.88745°W
- TARGET #1**
LAT: 40.46928°N
LONG: 104.87042°W
- TARGET #2**
LAT: 40.46928°N
LONG: 104.87201°W



Brian T. Brinkman, on behalf of Lat40°, Inc.
Colorado Licensed Professional
Land Surveyor No. 38175
DATE: rev.12/18/2013
PROJECT#: 2013126

SHEET 1 OF 2

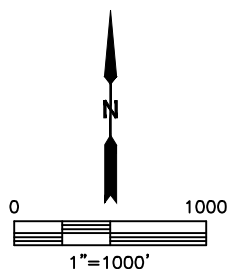
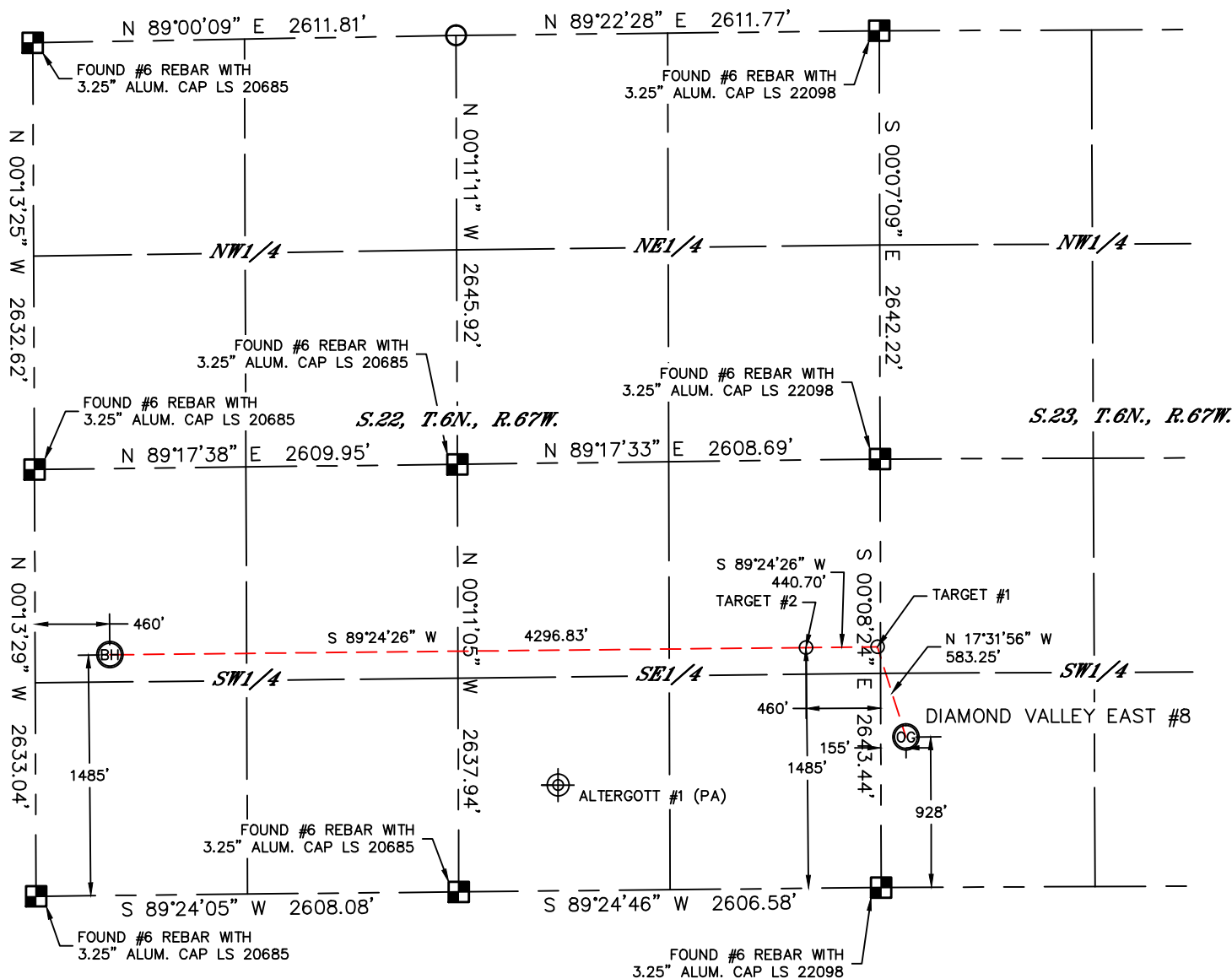


Lat40°, Inc. 1635 Foxtrail Drive, Suite 325 Loveland, CO 970-776-3321

WELL LOCATION CERTIFICATE

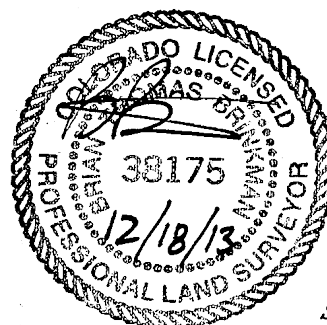
THIS MAP DOES NOT REPRESENT A BOUNDARY SURVEY

SECTION: 23
TOWNSHIP: 6N
RANGE: 67W



LEGEND

- = ALIQUOT MONUMENT AS DESCRIBED
- = CALCULATED POSITION



SHEET 2 OF 2

Brian T. Brinkman—On behalf of Lat40°, Inc.
Colorado Licensed Professional
Land Surveyor No. 38175

DATE: rev.12/18/2013
PROJECT#: 2013126