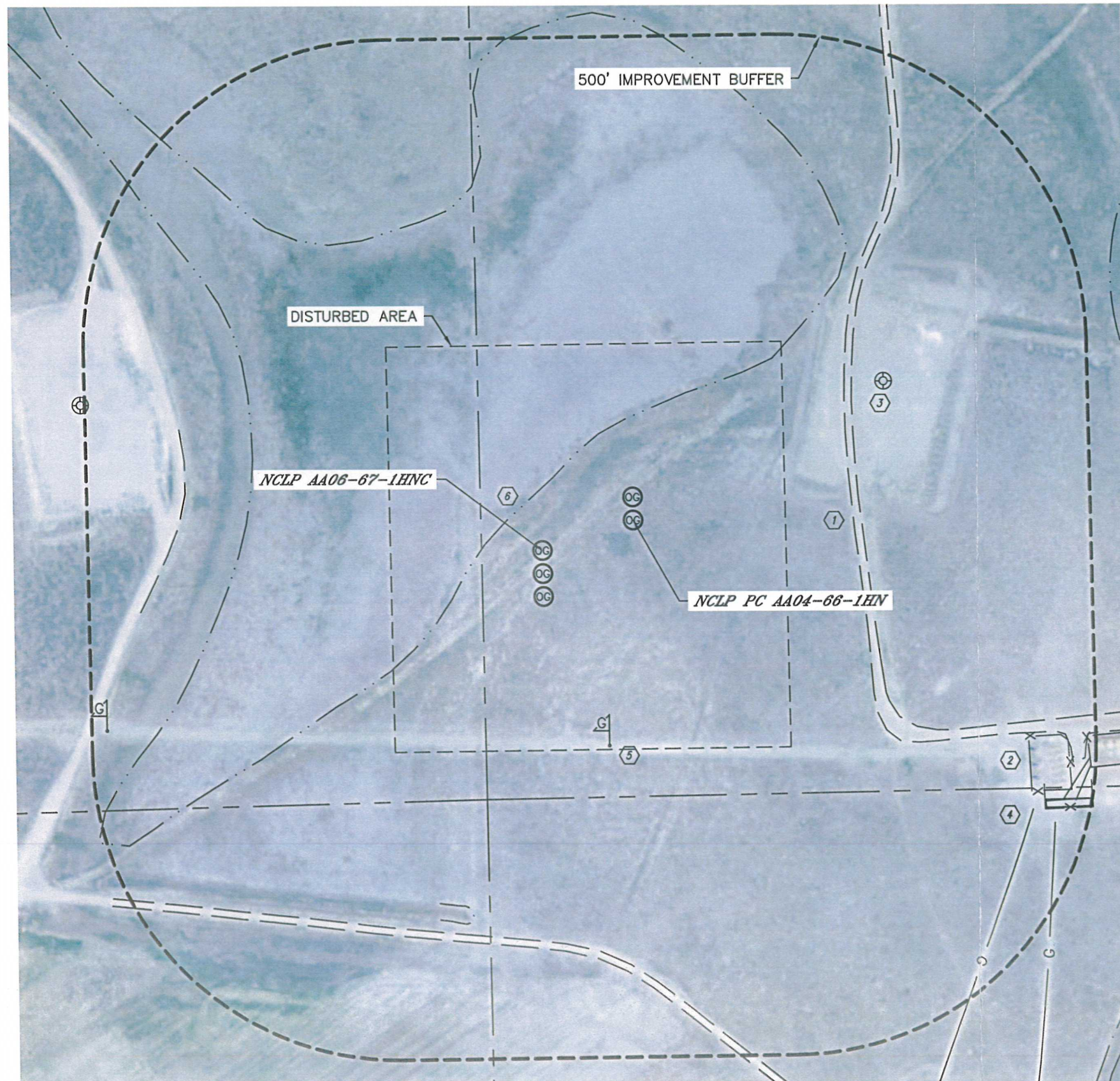


# LOCATION DRAWING

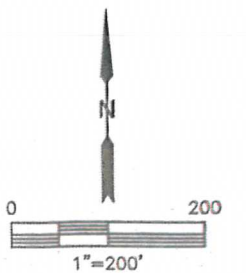
NCLP AA06-67-1HNC PAD & NCLP PC AA04-66-1HN PAD

SECTION: 4  
TOWNSHIP: 6N  
RANGE: 63W



IMPROVEMENTS:  
(MEASURED FROM THE PROPOSED NCLP AA06-67-1HNC WELL LOCATION)

- (BU) NONE WITHIN 500' IMPROVEMENT BUFFER
- (B) NONE WITHIN 500' IMPROVEMENT BUFFER
- (1) ACCESS ROAD 513' E, 596' NW, 633' S
- (2) EX. PRODUCTION EQUIPMENT (NOBLE) 851' SE
- (3) EX. WELL HEAD 626' NE
- (4) GAS LINE 905' SE
- (5) GAS MARKER 335' SE, 778' SW
- (6) LOW AREA 75' NW, 593' SW



NEAREST: BUILDING ±2864' NW, BUILDING UNIT ±2864' NW, HIGH OCCUPANCY BUILDING UNIT 1001'+,  
DESIGNATED OUTSIDE ACTIVITY AREA 1001'+, PUBLIC ROAD 2227' N (CR 74),  
ABOVE GROUND UTILITY 2203' N, RAILROAD 5280'+, PROPERTY LINE 403' S