



January 22, 2014

Mr. Brandon Danforth  
Environmental Specialist  
WPX Energy Rocky Mountain LLC  
1058 County Road 215  
Parachute, Colorado 81635

**RE: Status Report: Baseline Water Quality Sampling – COGCC COA 32 East Parachute Tank Farm**

Dear Mr. Danforth,

Western Water & Land, Inc. (WWL) conducted field reconnaissance in support of surface water sampling for the WPX Energy Rocky Mountain, LLC (WPX) East Parachute Tank Farm in accordance with COGCC COA 32. The East Parachute Tank Farm is located in SE1/4, NE1/4, Section 34, Township 6 S, Range 95 W, 6<sup>th</sup> P.M. (see Figure). This status report addresses field activities and sampling location status during the January 2014 sampling event.

#### **Field Activities and Sampling Location Status**

The East Parachute Tank Farm was visited by WWL personnel on January 6, 2014. COGCC COA 32 requires surface water samples to be collected from the unnamed stream located to the east-southeast of the East Parachute Tank Farm. If surface water is present, two water samples are to be collected; one at an upgradient location and one at a downgradient location relative to the facility location. The unnamed stream is an ephemeral stream and no flowing or standing water was observed in the drainage during the field visit. Photographs from these field activities are included in Attachment A. As a result of these events, no surface water samples were collected during the January 2014 sampling event.

If you have any questions or concerns, please contact me at (970) 242-0170.

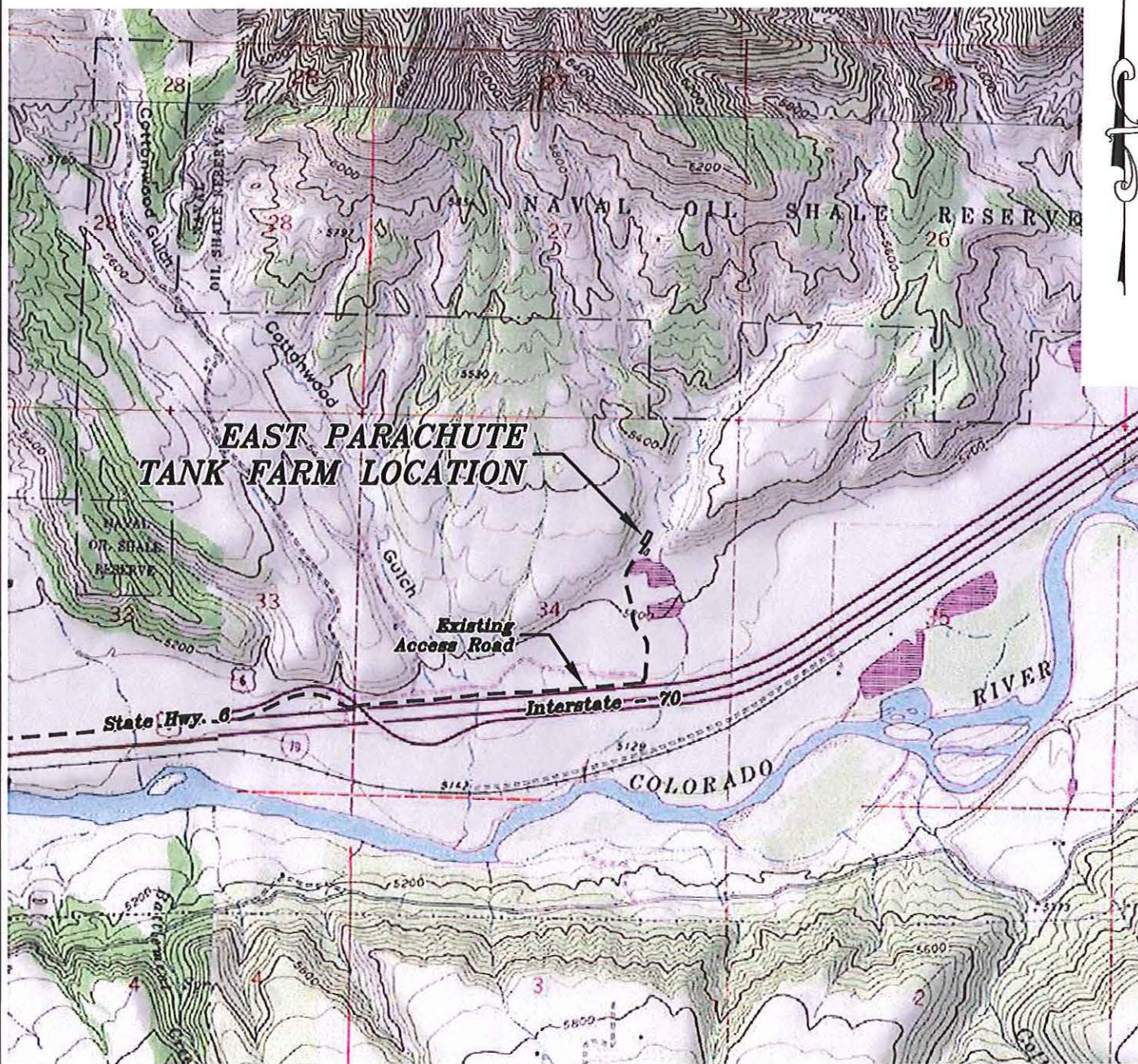
Sincerely,

Bruce D. Smith  
Principal Hydrogeologist  
WESTERN WATER & LAND, INC.

Attachment



Section 34  
T. 6 S., R. 95 W.



1000 0 2000  
GRAPHIC SCALE IN FEET  
1 INCH = 2000 FEET

**ACCESS DESCRIPTION:**  
FROM THE INTERSECTION OF 1ST STREET AND COUNTY ROAD 215 AT PARACHUTE, PROCEED IN A NORTHEASTERLY DIRECTION ON STATE HIGHWAY 6,  $\pm 3.4$  MILES TO AN INTERSECTION WITH A DIRT/GRAVEL ROAD, PROCEED LEFT IN A NORTHEASTERLY DIRECTION,  $\pm 0.8$  MILES TO AN INTERSECTION WITH A DIRT/GRAVEL ROAD, PROCEED LEFT IN A NORTHERLY DIRECTION,  $\pm 0.4$  TO THE EAST PARACHUTE TANK FARM LOCATION, AS SHOWN HEREON.

136 East Third Street  
Rifle, Colorado 81650  
Ph. (970) 625-2720  
Fax (970) 625-2773



**BOOKCLIFF**  
Survey Services, Inc.

SCALE: 1" = 2000'  
DATE: 9/26/13  
PLAT: 3 of 4  
PROJECT: Valley  
DFT: cws

Construction Plan Prepared for:  
**WPXENERGY** WPX Energy Rocky Mountain, LLC

East Parachute Tank Farm - Plat 3  
ACCESS ROAD & TOPO MAP



Attachment A

January 2014 Field Photographs



Photo 1. Unnamed stream upgradient of the East Parachute Tank Farm (January 2014).



Photo 2. Unnamed stream downgradient of the East Parachute Tank Farm (January 2014).