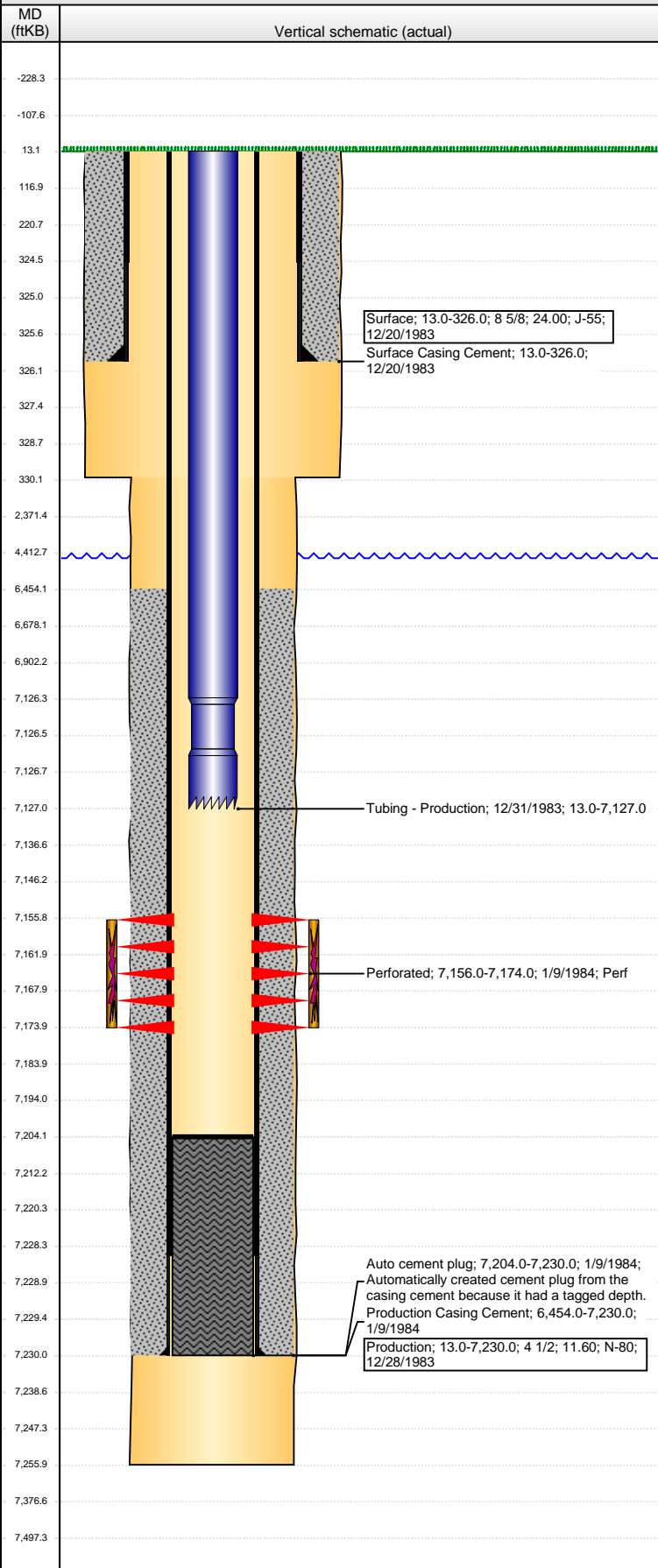


Well Name: MILNE 03

VERTICAL - ORIGINAL HOLE, 2/5/2014 10:59:26 AM



Well Header

API	Business Unit	District	Well Config
05-123-11549	WATTENBERG	15	VERTICAL
Original KB Elevation (ft)	KB - GL / MSL (ftKB)	Spud Date	P & A Date
4,790.00	13.00	12/20/1983	

Comment
Limited amount of data in well file.
Discrepancy in Perf interval. Completion report states: 7156 - 7166
Wellbore Diagram states: 7164-7174

Directions To Well

Congressional Location

Quarter 1	Quarter 2	Quarter 3	Quarter 4	Section	Township	Twntshp N...	Range	Rng E/W Dir
		NW	NW	18	6	N	65	W

Bottom Hole Location

North-South Distance (ft)	From N or S Line	East-West Distance (ft)	From E or W Line

Plug Back Total Depths

Date	Depth (ftKB)	Method	Com
12/28/1983	7,246.0	Float Collar	
12/29/1983	7,204.0	CASED HOLE LOG	

Wellbore Sections

Section Des	Size (in)	Act Top, MD (ftKB)	Act Btm, MD (ftKB)
SURFACE	12 1/4	13.0	330.0
PRODUCTION	7 7/8	330.0	7,256.0

Zone Statuses

Zone Name	Status Date	Status	Job
CODELL	1/10/1984	PR	DRILLING/COMPLETION - ORIGINAL, 12/20/1983 00:00

Casing Strings

Casing Description	Run Date	OD (in)	Wt/Len (l...)	Grade	Top, MD (ft...)	MD (ftKB)
Surface	12/20/1983	8 5/8	24.00	J-55	13.0	326.0

Production, 7,230.0ftKB

Casing Description	Run Date	OD (in)	Wt/Len (l...)	Grade	Top, MD (ft...)	MD (ftKB)
Production	12/28/1983	4 1/2	11.60	N-80	13.0	7,230.0

Cement

Description	Top Depth (ftKB)	Bottom Depth (ftKB)
Surface Casing Cement	13.0	326.0
Production Casing Cement	6,454.0	7,230.0

Tubing Components

Item Des	OD (in)	Wt (lb/ft)	Grade	Jts	Len (ft)	Btm (ftKB)	Btm (TVD) (ftKB)
Tubing	2 3/8	4.70	J-55	224	7,113.30	7,126.3	
Notched collar	2 3/8			1	0.70	7,127.0	

Perforation Data

Zone	Bnch/St g	Entered Shot Total	Top (ftKB)	Btm (ftKB)	Date
CODELL, ORIGINAL HOLE		30	7,156.00	7,174.00	1/9/1984

Stimulations & Treatments

Date	Zone	Primary Job Type
1/2/1984	CODELL, ORIGINAL HOLE	DRILLING/COMPLETION - ORIGINAL
Technical Result	Tech Result Details	Tech Result Note

Comment

Other In Hole

Run Date	Des	OD (in)	Top (ftKB)	Btm (ftKB)

Logs

Date	Type	Top, MD (ftKB)	Btm, MD (ftKB)