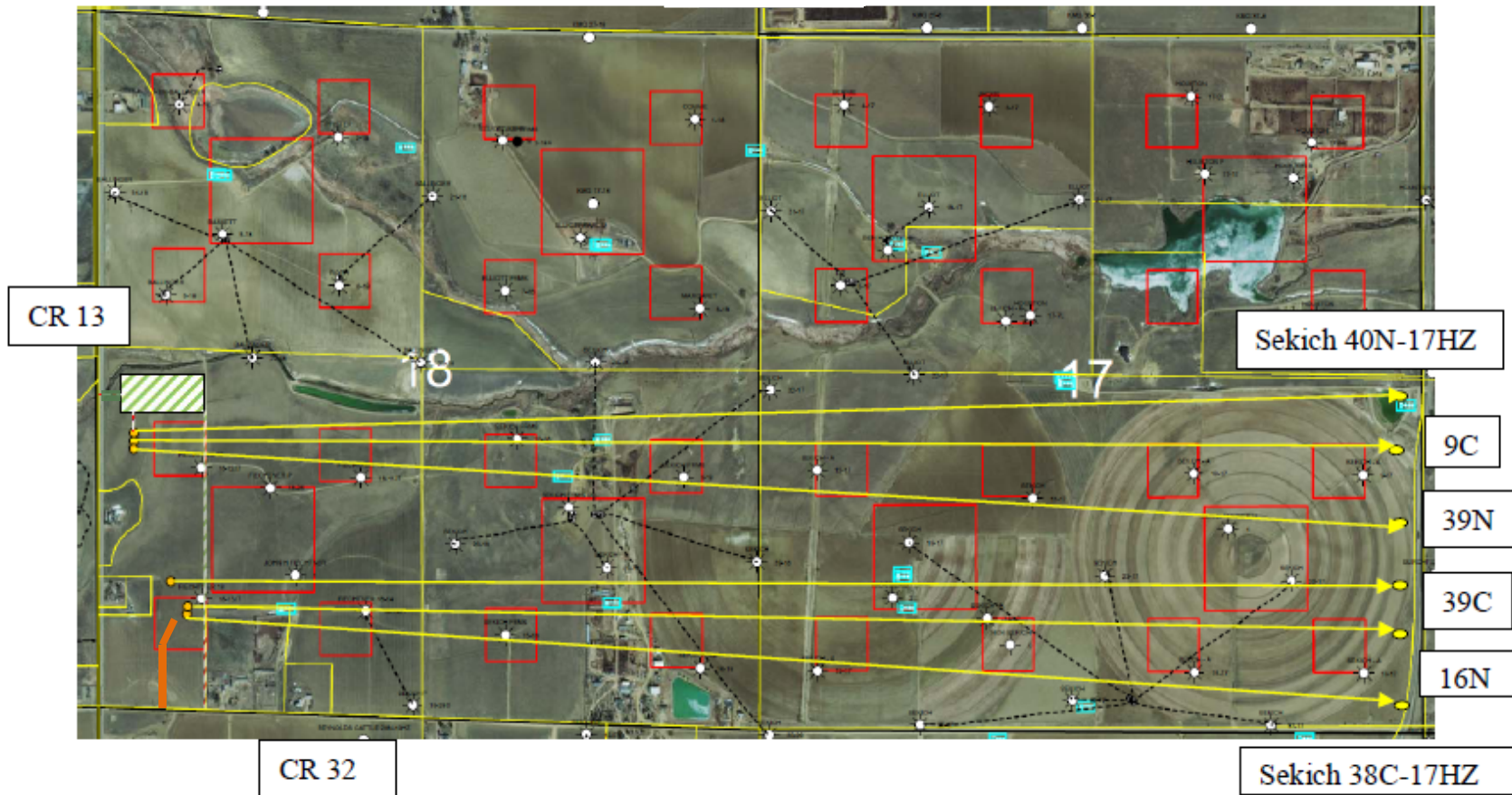


ACCESS ROAD MAP



This aerial photo and all notations and depictions thereon is provided as a courtesy and is intended to be used for general reference purposes only. Kerr-McGee/landaria expressly disclaims any and all representations or warranties regarding the accuracy or the completeness of the information appearing on this aerial photo and any reliance on it for any purpose whatsoever is at the sole risk of the party so relying.



- Temporary Access Road
- - - Access Road
- KMG Gathering Line
- Duke Pipeline
- RGS Pipeline
- - - Proposed Flowline
- Legal Drilling Window
- Exist Battery Location
- New Battery Location
- Proposed Wellhead
- Bottomhole Location
- Potential Drill Sites



Aerial Photo
Sec. 17, 18-3N-67W
Weld County, CO

Author:
Teddy Ruampant

Edited By: TDE

Last Edited:
10/13