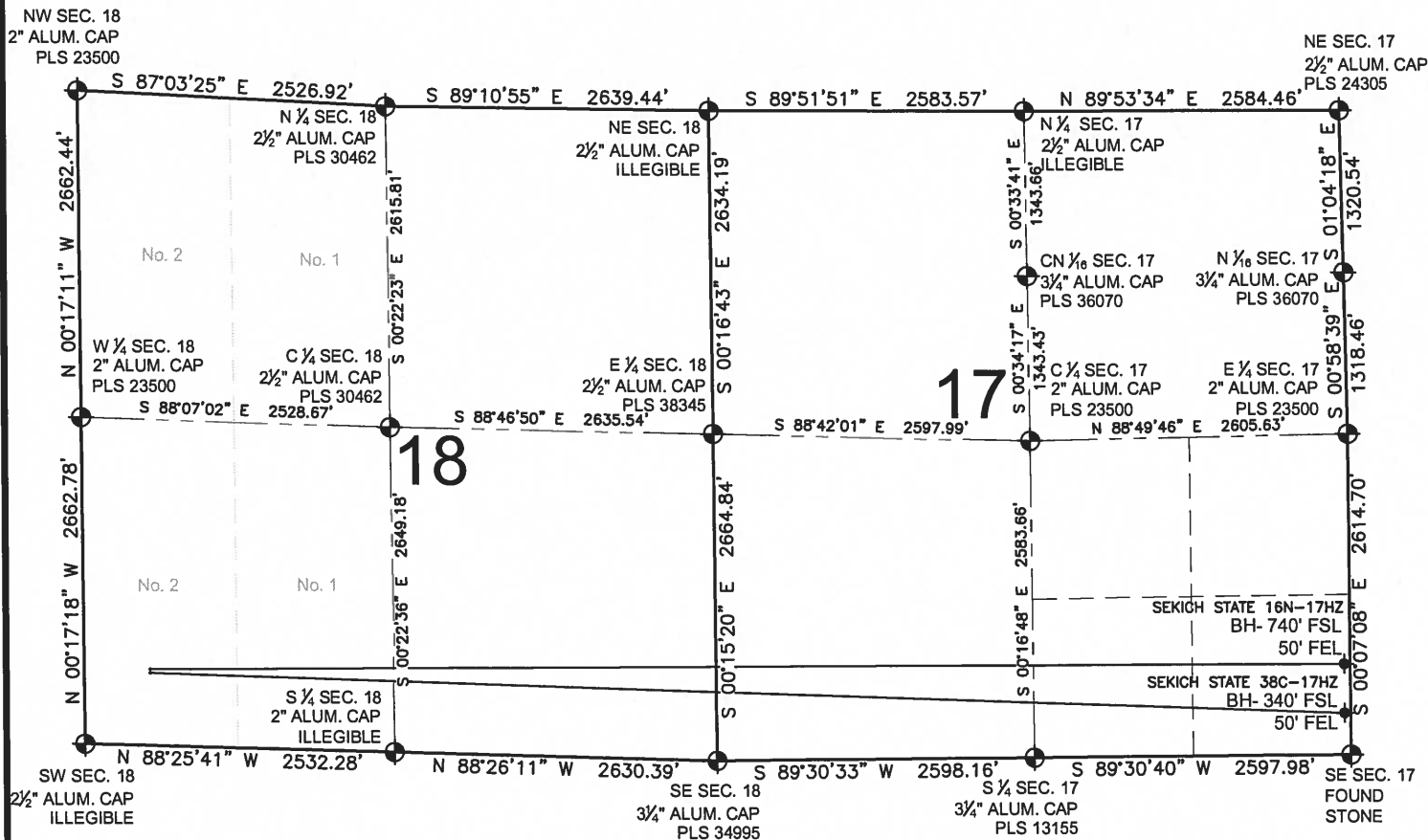


SEKICH STATE 16N-17HZ MULTI-WELL PLAN

SECTION 18, TOWNSHIP 3 NORTH, RANGE 67 WEST, 6TH P.M.



NOTES:

SEKICH STATE 16N-17HZ TO BE AT 622' FSL, 535' FWL.
BOTTOM HOLE AT 740' FSL & 50' FEL, SEC 17
SEKICH STATE 38C-17HZ TO BE AT 592' FSL, 535' FWL.
BOTTOM HOLE AT 340' FSL & 50' FEL, SEC 17

LEGEND

- = EXISTING MONUMENT
- = PROPOSED WELL
- ⊕ = BOTTOM HOLE
- ◆ = EXISTING WELL
- BH = BOTTOM HOLE

PREPARED BY:



KERR-MCGEE OIL & GAS ONSHORE LP

FIELD DATE:
10-18-13

DRAWING DATE:
11-12-13

SURFACE LOCATION:

LOT 2, SW 1/4, SEC. 18, T3N, R67W, 6TH P.M.
WELD COUNTY, COLORADO

