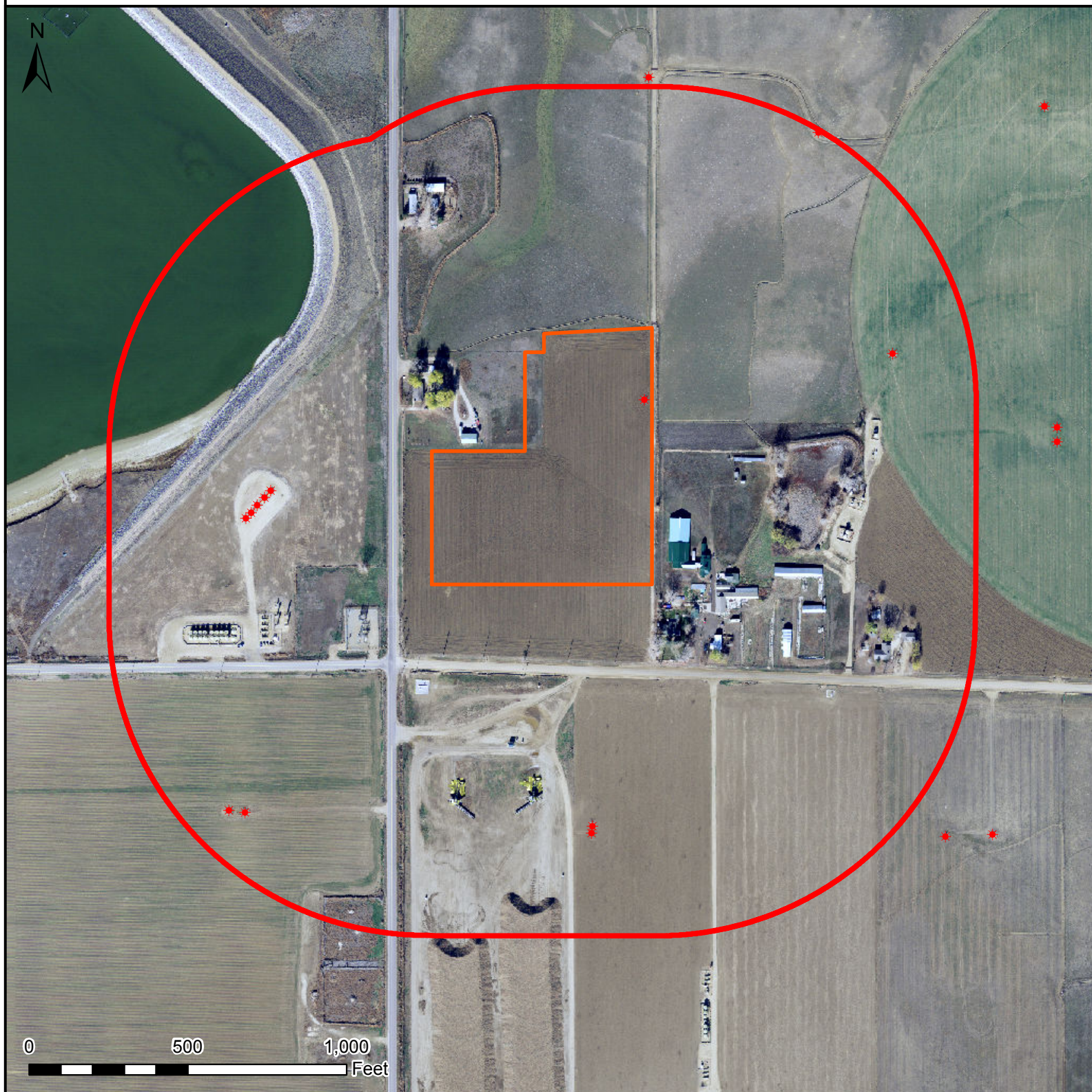


HYDROLOGY MAP

SEKICH STATE 16N-17HZ



Legend

- Well pad (proposed)
- 1000' buffer
- Existing oil/gas well (COGCC)

Nearest Surface Water Feature

Ditch: 295' E
Stream elevation: 4875'
Well elevation: 4875'

All measurements are made from
the reference well.



Date created: 12/11/2013
Created by: APC Regulatory GIS
Scale: 1:5,000
Projection: NAD83 UTM 13N