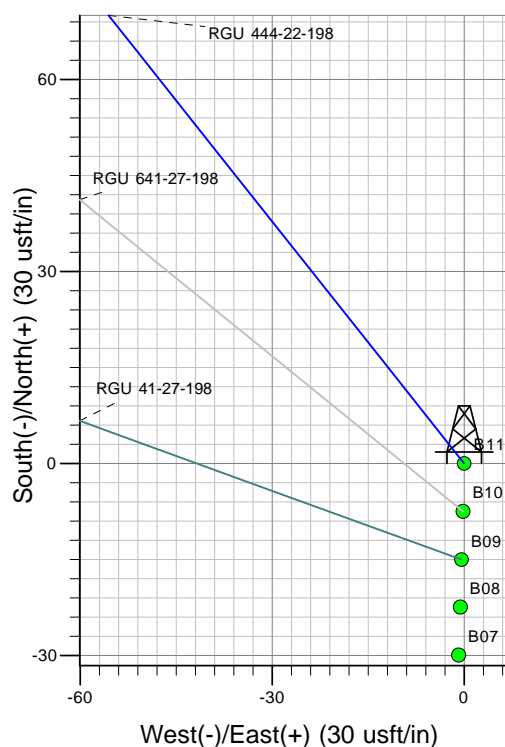
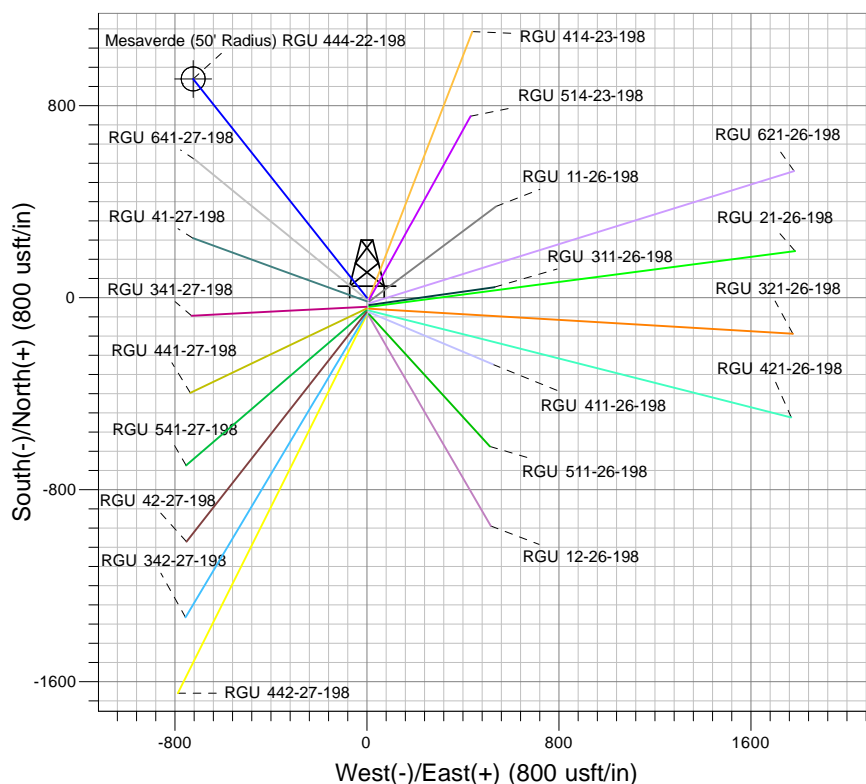
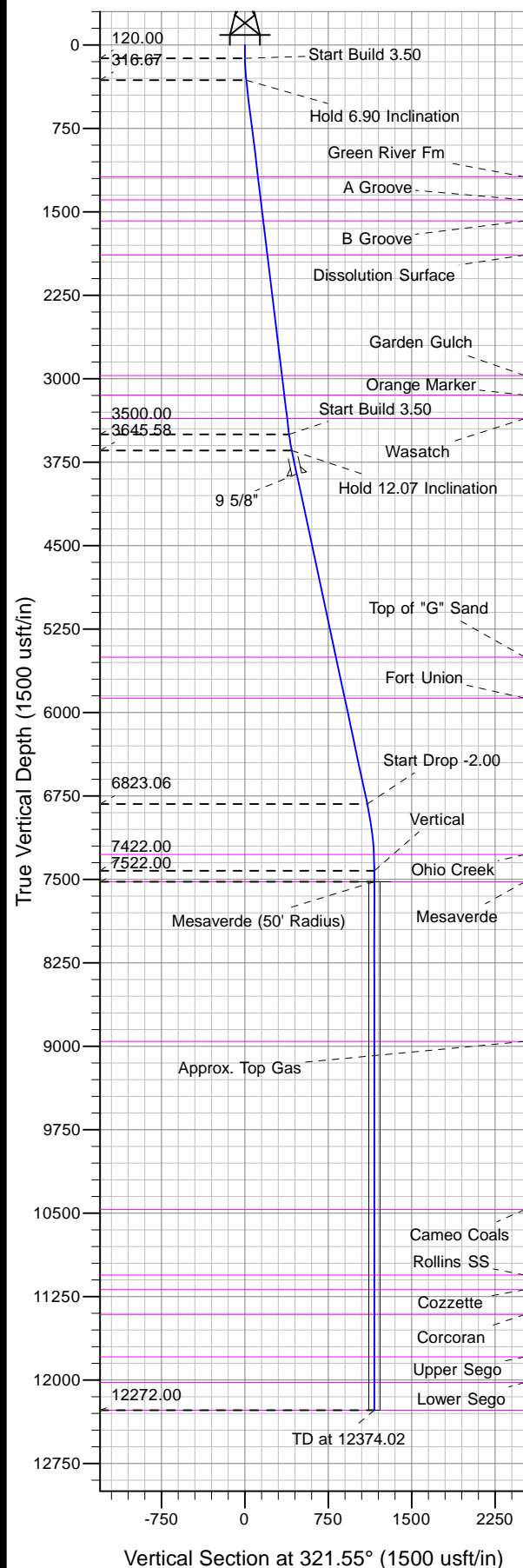




Well Name: RGU 444-22-198  
Surface Location: RGU 11-26-198  
North American Datum 1983 , US State Plane 1983, Colorado Central Zone  
Ground Elevation: 6586.00  
+N/-S +E/-W Northing Easting Latitude Longitude Slot  
0.00 0.00 1780077.80 2195664.00 39.94026 -108.36881 B11  
KELLY BUSHING @ 6607.00usft (Cyclone 29 (21' RKB) kjs)



Project: RG 26-01S-098W  
Site: RGU 11-26-198  
Well: RGU 444-22-198  
Design #2 05Nov13 kjs



Azimuths to True North  
Magnetic North: 10.31°  
Magnetic Field  
Strength: 52229.1snT  
Dip Angle: 65.98°  
Date: 7/9/2013  
Model: IGRF2010

#### ANNOTATIONS

TVD	MD	Inc	Azi	+N/-S	+E/-W	Vsect	Departure	Annotation
120.00	120.00	0.00	0.00	0.00	0.00	0.00	0.00	Start Build 3.50
316.67	317.14	6.90	321.55	9.29	-7.37	11.86	11.86	Hold 6.90 Inclination
3500.00	3523.70	6.90	321.55	310.98	-246.92	397.08	397.08	Start Build 3.50
3645.58	3671.35	12.07	321.55	330.02	-262.04	421.40	421.40	Hold 12.07 Inclination
6823.06	6920.64	12.07	321.55	862.01	-684.49	1100.72	1100.72	Start Drop -2.00
7422.00	7524.02	0.00	0.00	911.59	-723.86	1164.03	1164.03	Vertical
7522.00	7624.02	0.00	0.00	911.59	-723.86	1164.03	1164.03	Mesaverde
12272.00	12374.02	0.00	0.00	911.59	-723.86	1164.03	1164.03	TD at 12374.02