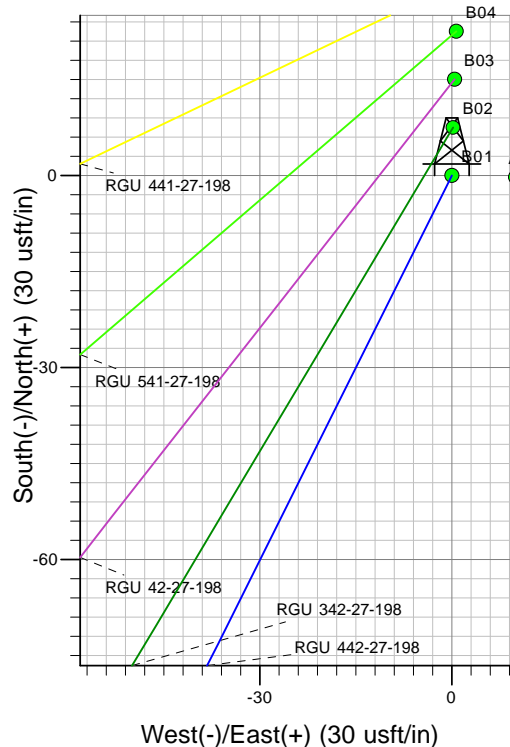
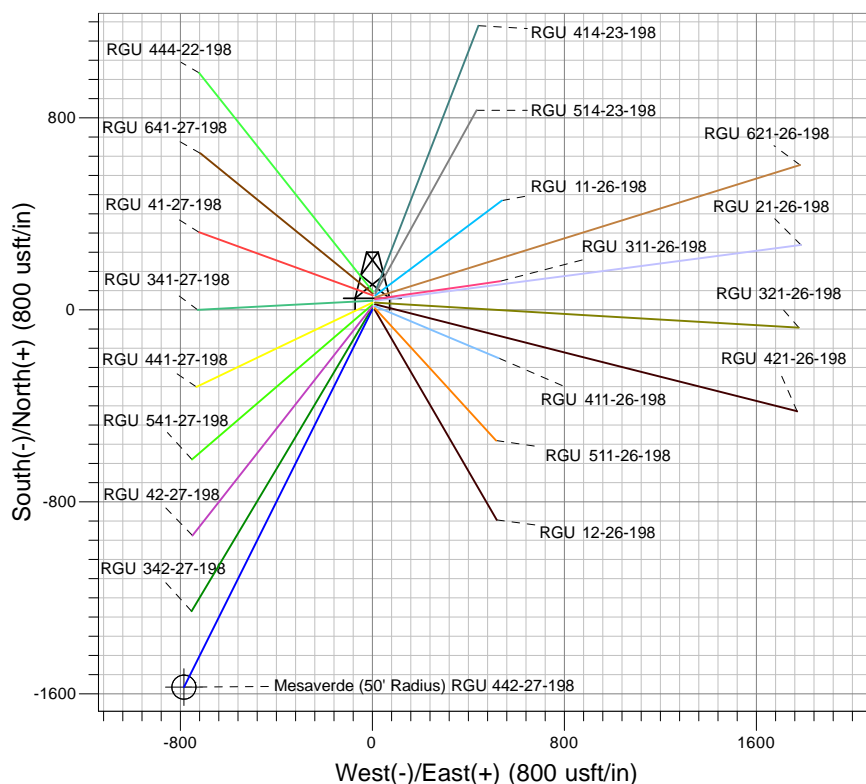
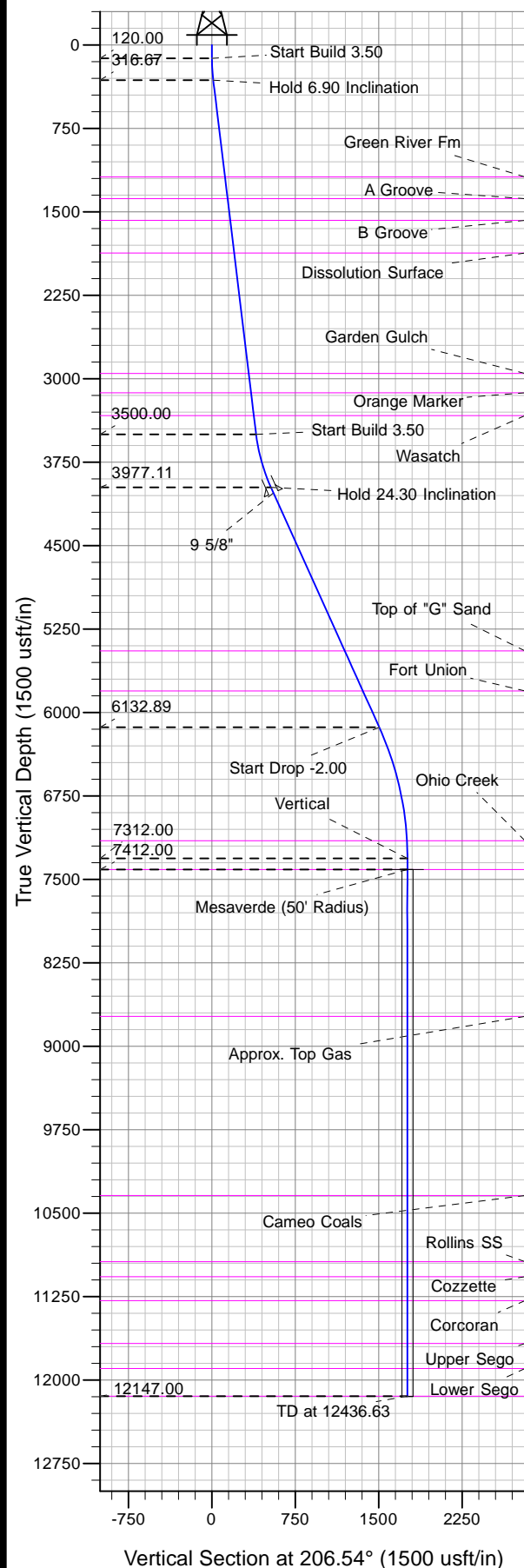




Well Name: RGU 442-27-198
Surface Location: RGU 11-26-198
North American Datum 1983 , US State Plane 1983, Colorado Central Zone
Ground Elevation: 6586.00

+N/-S	+E/-W	Northing	Easting	Latitude	Longitude	Spot
0.00	0.00	1780002.90	2195659.40	39.94006	-108.36882	B01

KELLY BUSHING @ 6607.00usft (Cyclone 29 (21' RKB) kjs)



Project: RG 26-01S-098W
Site: RGU 11-26-198
Well: RGU 442-27-198
Design #2 05Nov13 kjs



Azimuths to True North
Magnetic North: 10.31°
Magnetic Field
Strength: 52228.9snT
Dip Angle: 65.98°
Date: 7/9/2013
Model: IGRF2010

ANNOTATIONS

TVD	MD	Inc	Azi	+N/-S	+E/-W	VSect	Departure	Annotation
120.00	120.00	0.00	0.00	0.00	0.00	0.00	0.00	Start Build 3.50
316.67	317.14	6.90	206.54	-10.61	-5.30	11.86	11.86	Hold 6.90 Inclination
3500.00	3523.70	6.90	206.54	-355.24	-177.43	397.08	397.08	Start Build 3.50
3977.11	4020.98	24.30	206.54	-474.44	-236.95	530.32	530.32	Hold 24.30 Inclination
6132.89	6386.40	24.30	206.54	-1345.46	-671.89	1503.89	1503.89	Start Drop -2.00
7312.00	7601.63	0.00	0.00	-1572.62	-785.32	1757.80	1757.80	Vertical
7412.00	7701.63	0.00	0.00	-1572.62	-785.32	1757.80	1757.80	Mesaverde
12147.00	12436.63	0.00	0.00	-1572.62	-785.32	1757.80	1757.80	TD at 12436.63