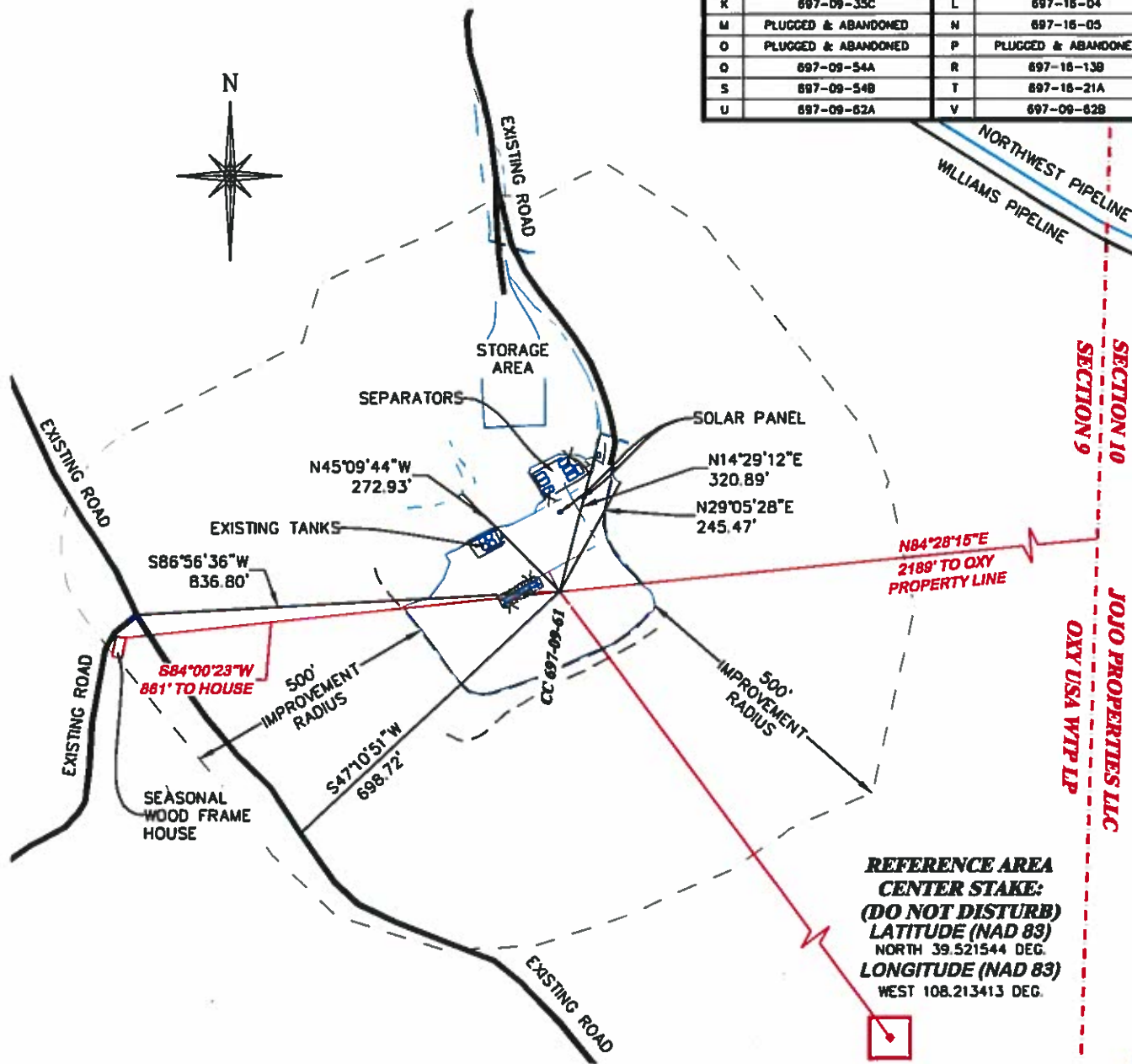


GRADED ELEVATION: 8279.4'
 EXISTING AREA OF DISTURBANCE: 4.8± ACRES
 DRAINS TO CASCADE CANYON

LOCATION DRAWING

CC 697-09-61 PAD			
SLOT	WELL	SLOT	WELL
A	697-09-60A	B	697-09-60B
C	697-09-52B	D	PLUGGED & ABANDONED
E	697-09-52A	F	697-09-58
G	697-09-44B	H	697-16-11A
I	697-09-44A	J	PLUGGED & ABANDONED
K	697-09-35C	L	697-16-04
M	PLUGGED & ABANDONED	N	697-16-05
O	PLUGGED & ABANDONED	P	PLUGGED & ABANDONED
Q	697-09-54A	R	697-16-13B
S	697-09-54B	T	697-16-21A
U	697-09-62A	V	697-09-62B



**BEFORE DIGGING
 CALL FOR
 UTILITY LINE LOCATION**
 NOTE: THE EARTH QUANTITIES ON
 THIS DRAWING ARE ESTIMATED
 AND THE USE OF IS AT THE
 RESPONSIBILITY OF THE USER.

CC 697-09-61 PAD



RIFFIN & ASSOCIATES, INC.
 1414 ELK ST., ROCK SPRINGS, WY 82901

(307) 362-6028

DRAWN: 9/20/2013 - TCM

SCALE: 1" = 300'

REVISED: . . .

DRG JOB No. 20160

EXHIBIT 2C

LOCATION DRAWING

**LOCATION DRAWING
 OXY USA WTP LP
 CASCADE CREEK 697-09-61
 SWSE, SECTION 9, T. 6 S., R. 97 W., 6th P.M.,
 GARFIELD COUNTY, COLORADO**