

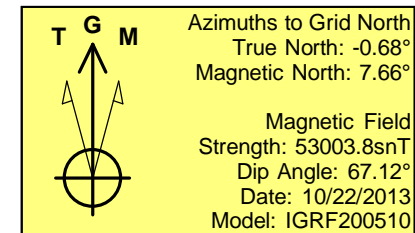
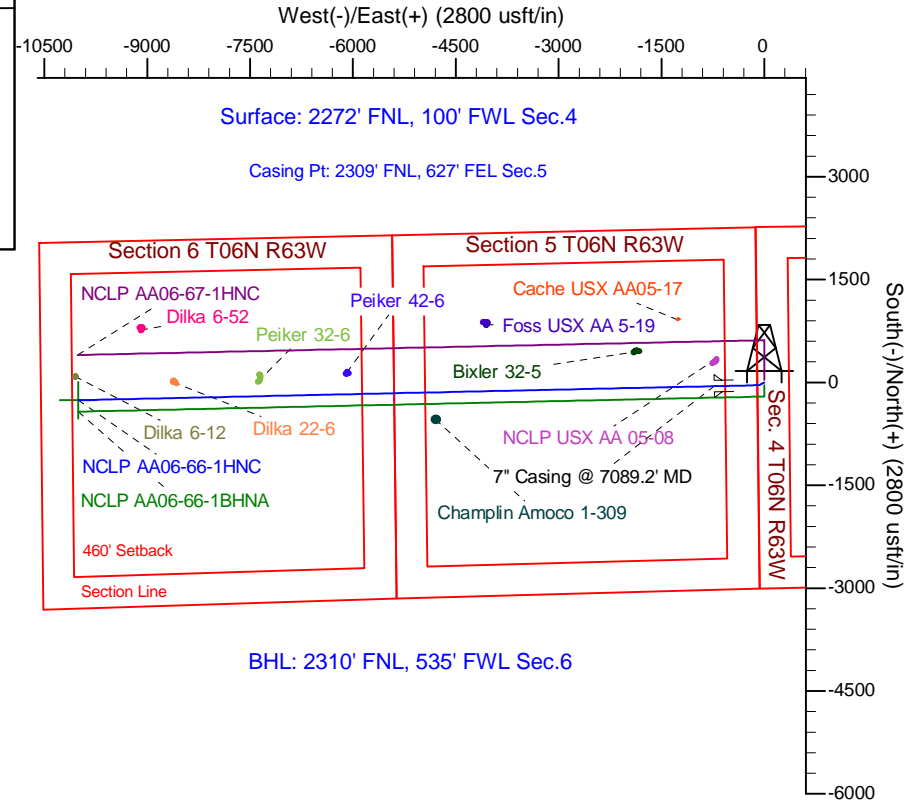
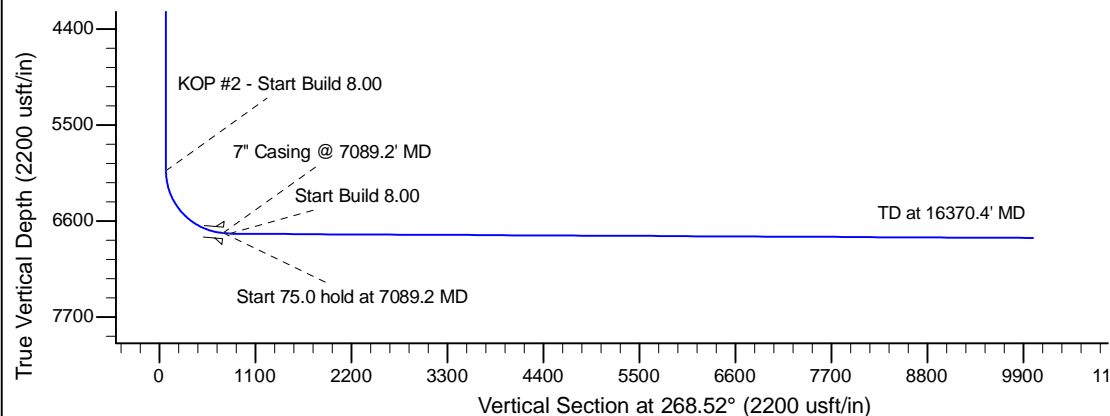
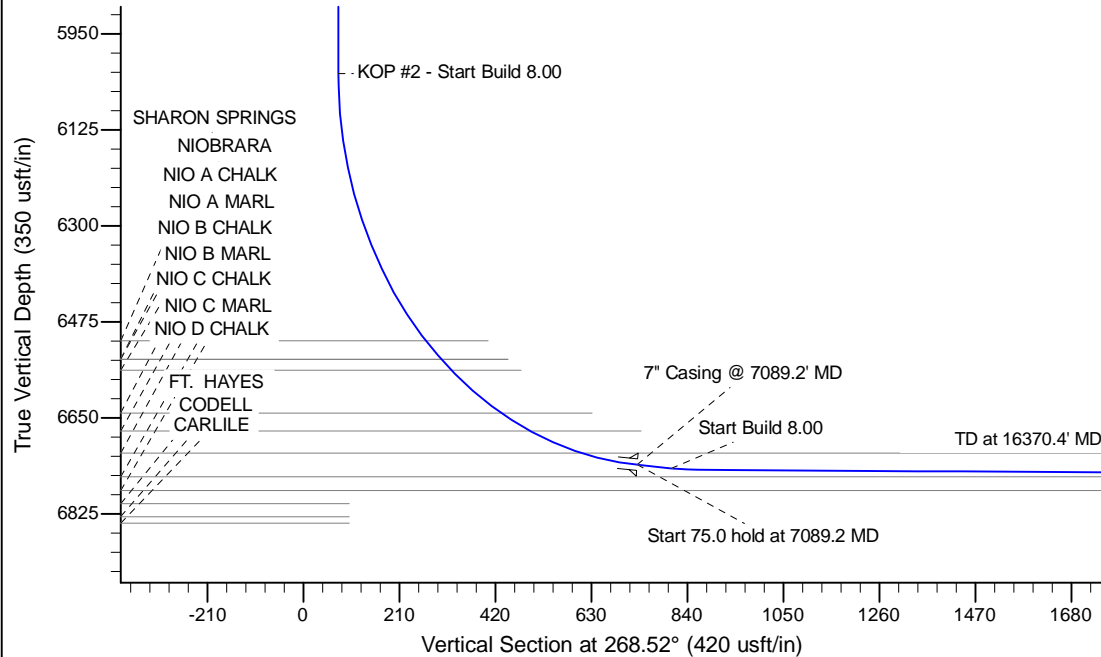
Project: Wattenberg Field
Site: AA (Sec.4-T06N-R63W) Weld County, CO
Well: NCLP AA06-66-1HNC
Wellbore: Original Drilling
Design: APD - Rev 1

Northern Region Drilling - Working

Geodetic System: US State Plane 1983
Datum: North American Datum 1983
Ellipsoid: GRS 1980
Zone: Colorado Northern Zone
System Datum: Mean Sea Level

SECTION DETAILS

Sec	MD	Inc	Azi	TVD	+N/-S	+E/-W	Dleg	TFace	VSec	Target
1	0.0	0.00	0.00	0.0	0.0	0.0	0.00	0.00	0.0	
2	1800.0	0.00	0.00	1800.0	0.0	0.0	0.00	0.00	0.0	
3	2275.4	9.51	241.93	2273.2	-18.5	-34.7	2.00	241.93	35.2	
4	2313.5	9.51	241.93	2310.8	-21.5	-40.3	0.00	0.00	40.8	
5	2788.9	0.00	0.00	2784.0	-40.0	-75.0	2.00	180.00	76.0	
6	6026.7	0.00	0.00	6021.8	-40.0	-75.0	0.00	0.00	76.0	
7	7089.2	85.00	268.74	6735.3	-54.4	-728.6	8.00	268.74	729.8	
8	7164.2	85.00	268.74	6741.8	-56.0	-803.3	0.00	0.00	804.5	
9	7222.9	89.70	268.74	6744.5	-57.3	-862.0	8.00	0.00	863.2	
10	16370.4	89.70	268.74	6792.4	-258.5	-10007.1	0.00	0.00	10010.5	NCLP AA06-66-1HNC BHL 2310'FNL, 535'FWL



WELL DETAILS: NCLP AA06-66-1HNC					
Ground Level: 4709.0					
0.0	0.0	Northing	Easting	Latitude	Longitude
		1432825.44	3291686.25	40.516770	-104.450860
Plan: APD - Rev 1 (NCLP AA06-66-1HNC/Original Drilling)					
Created By: Shailey Jewell		Date: 13:58, November 26 2013			
Checked: _____		Date: _____			
Reviewed: _____		Date: _____			
Approved: _____		Date: _____			