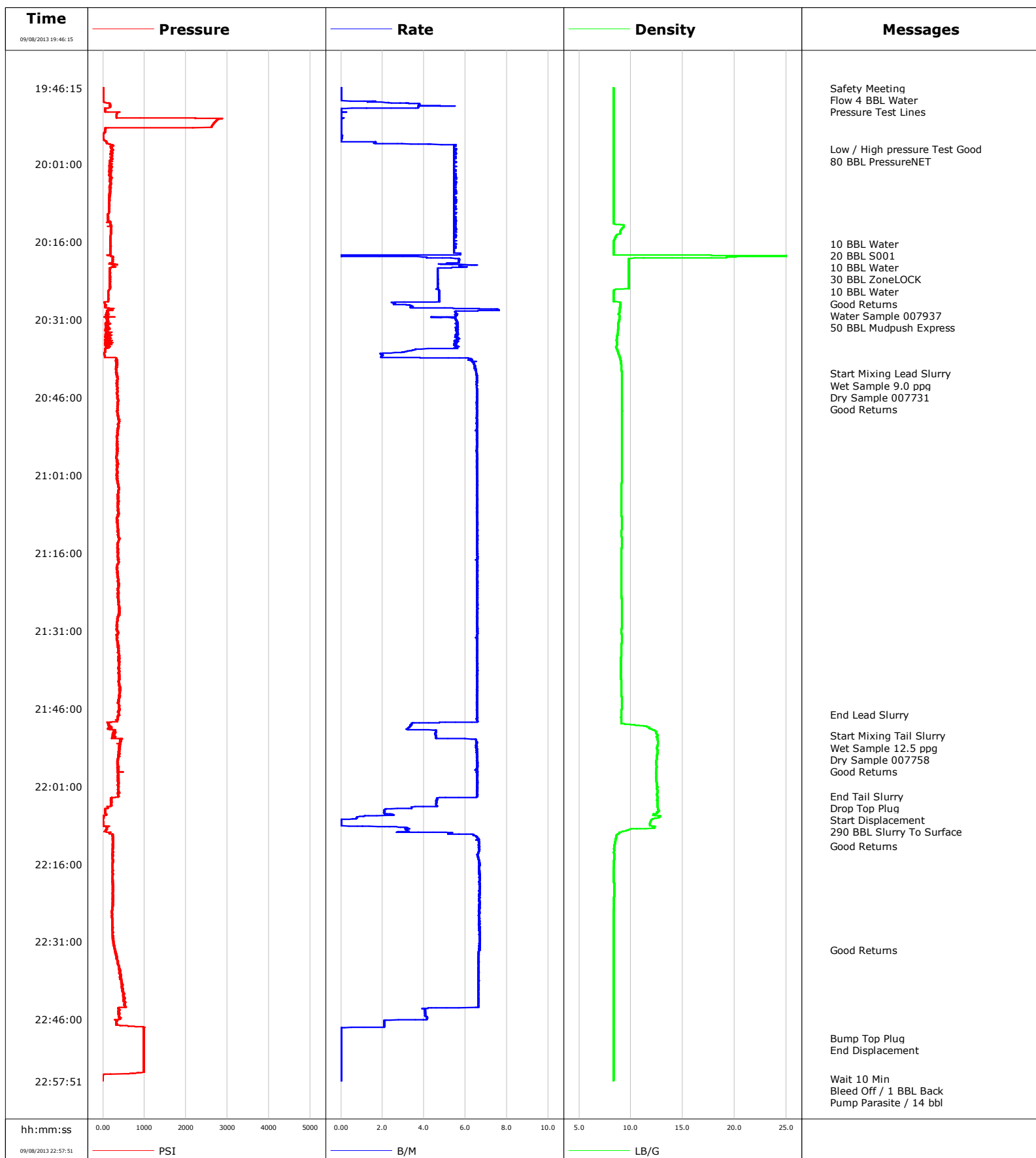


**Well** SGU 8511A-34 E34 496  
**Field** Story Gulch  
**Engineer** Travis Willardson Cole Fairbrook  
**Country** United States

**Client** EnCana  
**SIR No.** CMI!-00258  
**Job Type** 9 5/8 Surface  
**Job Date** 09-08-2013

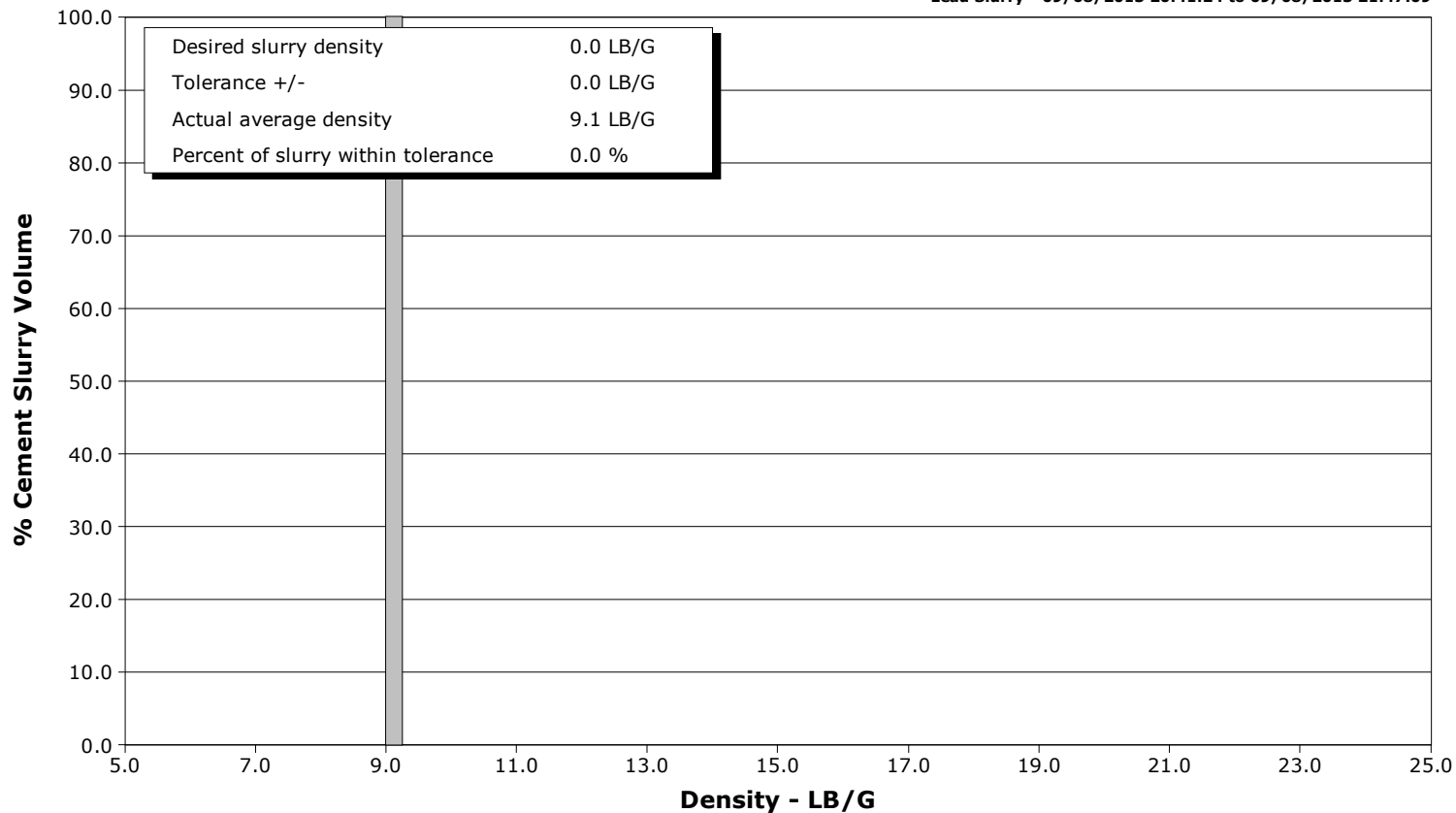


# Schlumberger Cementing Qa/Qc Density Report

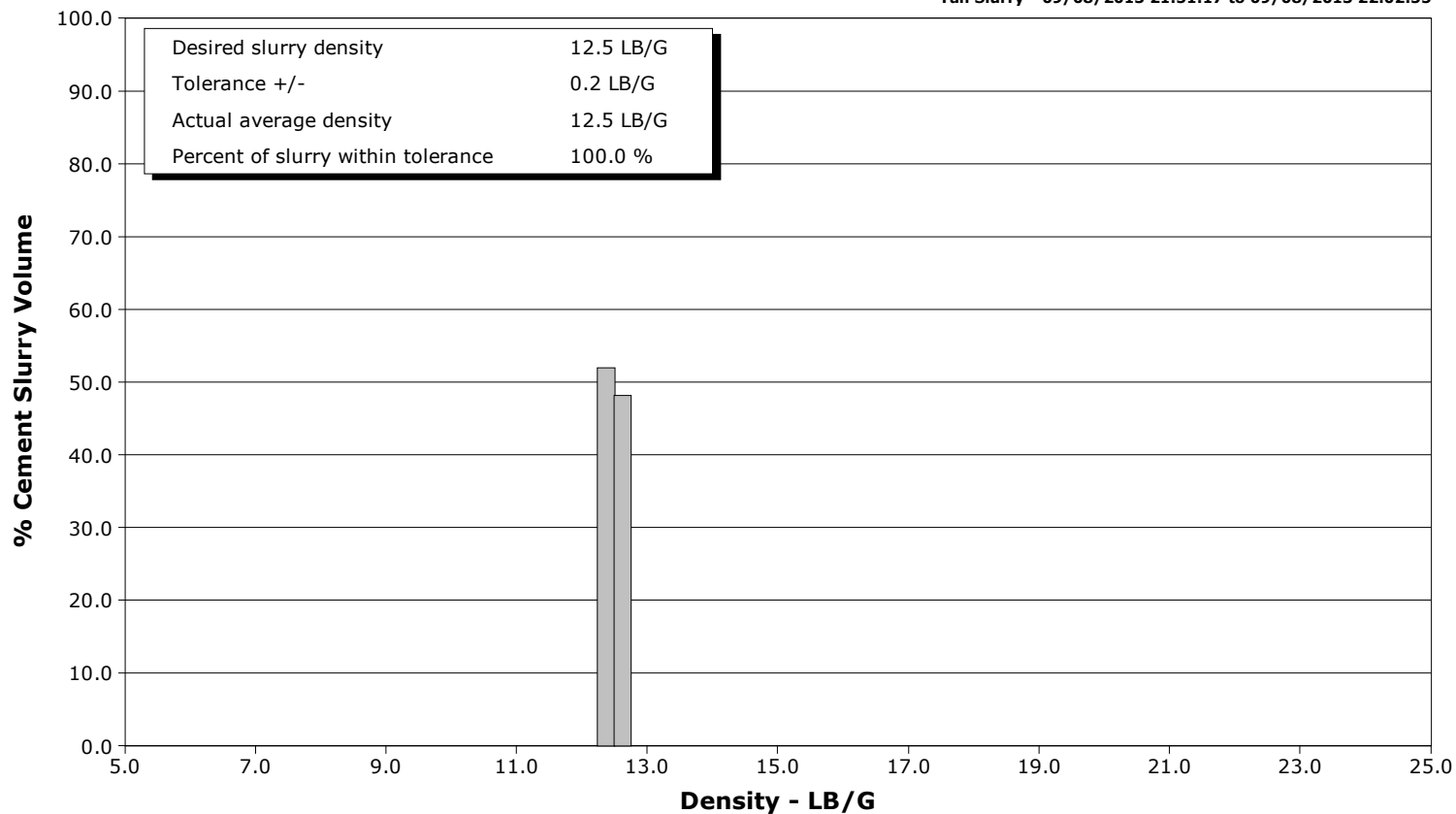
**Well** SGU 8511A-34 E34 496  
**Field** Story Gulch  
**Engineer** Travis Willardson Cole Fairbrook  
**Country** United States

**Client** EnCana  
**SIR No.** CMI!-00258  
**Job Type** 9 5/8 Surface  
**Job Date** 09-08-2013

**Lead Slurry - 09/08/2013 20:41:24 to 09/08/2013 21:47:09**



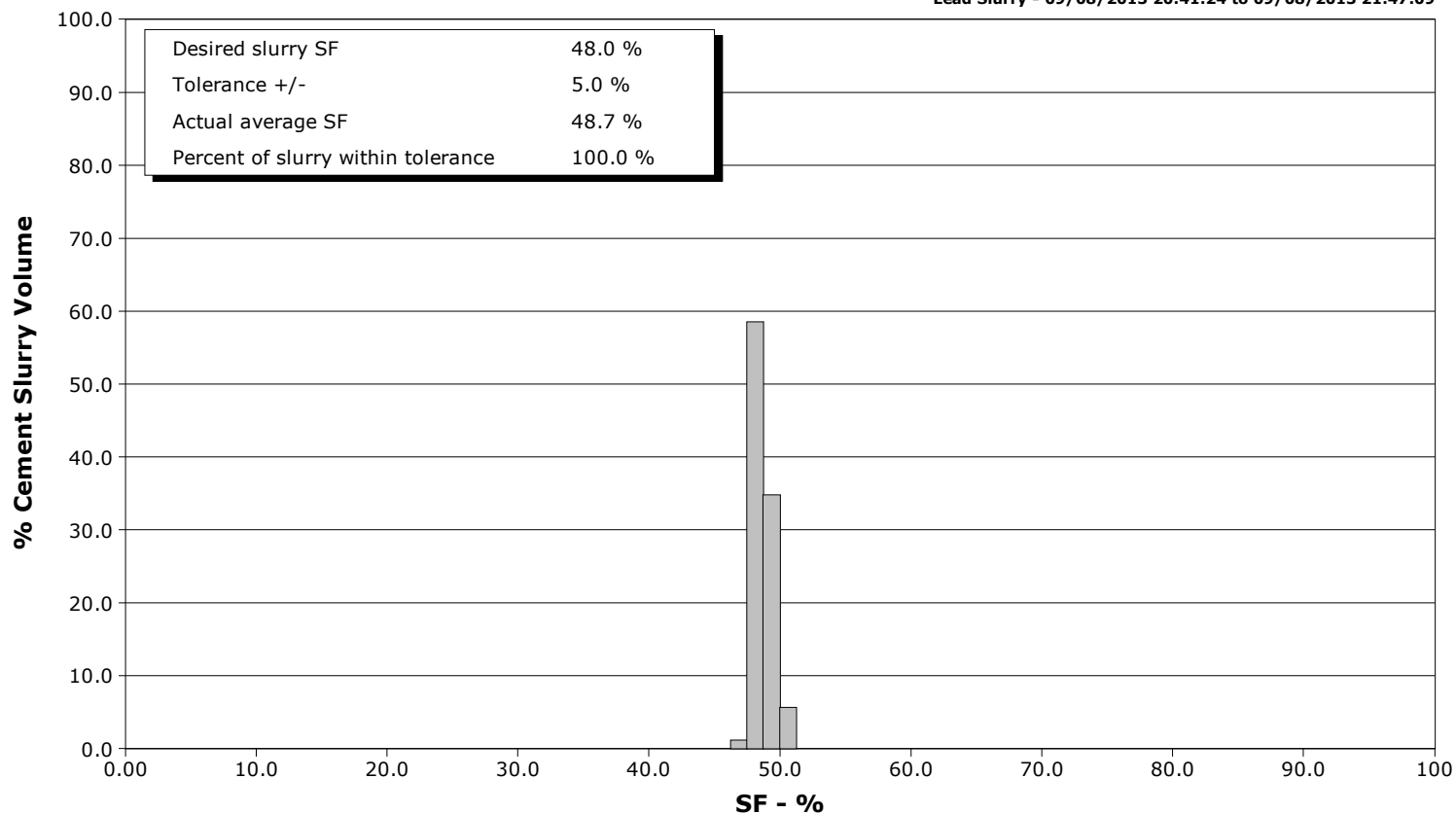
**Tail Slurry - 09/08/2013 21:51:17 to 09/08/2013 22:02:55**



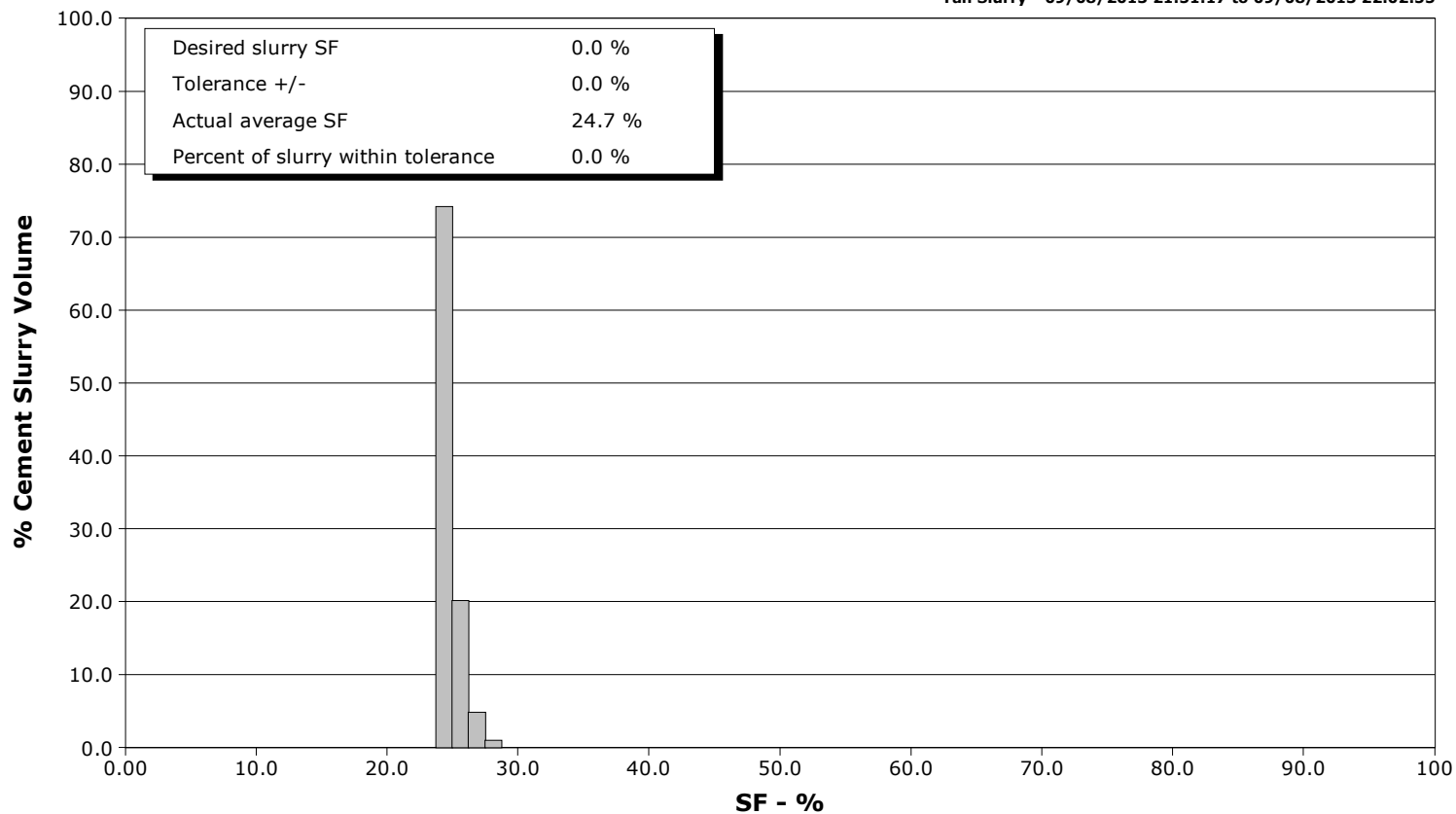
**Well** SGU 8511A-34 E34 496  
**Field** Story Gulch  
**Engineer** Travis Willardson Cole Fairbrook  
**Country** United States

**Client** EnCana  
**SIR No.** CMI!-00258  
**Job Type** 9 5/8 Surface  
**Job Date** 09-08-2013

**Lead Slurry - 09/08/2013 20:41:24 to 09/08/2013 21:47:09**



**Tail Slurry - 09/08/2013 21:51:17 to 09/08/2013 22:02:55**





# Cementing Service Report

				Customer EnCana		Job Number CMI-00258		
Well SGU 8511A-34 E34 496 8511A-34 E34 496			Location (legal) E34		Schlumberger Location Grand Junction		Job Start Sep/08/2013	
Field Story Gulch		Formation Name/Type Dirty-Sandstone		Deviation	Bit Size 14.8 in	Well MD 2980.0 ft	Well TVD 2939.0 ft	
County Garfield		State/Province Colorado		BHP	BHST 120 degF	BHCT 89 degF	Pore Press. Gradient	
Well Master 0631491993		API/UWI 050452192300						
Rig Name Patterson 326		Drilled For Gas	Service Via Land	Casing/Liner				
				Depth, ft	Size, in	Weight, lb/ft	Grade	Thread
Offshore Zone		Well Class New	Well Type Development	120.0	20.000	52.8	N/A	N/A
				2980.0	9.630	36.0	J55	8RD
Drilling Fluid Type Bentonite		Max. Density	Plastic Viscosity	Tubing/Drill Pipe				
				Depth,	Size,	Weight,	Grade	Thread
Service Line Cementing		Job Type 9 5/8 Surface						
Max. Allowed Tub. Press		Max. Allowed Ann. Press	WH Connection Single Cement head	Perforations/Open Hole				
				Top,	Bottom,		No. of Shots	Total Interval
								Diameter
				Treat Down Casing	Displacement 227.0 bbl	Packer Type	Packer Depth	
				Tubing Vol.	Casing Vol.	Annular Vol. 379.0 bbl	Openhole Vol. 627.0 bbl	
Casing/Tubing Secured <input checked="" type="checkbox"/>		1 Hole Vol. Circulated prior to Cement <input checked="" type="checkbox"/>		Casing Tools		Squeeze Job		
Lift Pressure 1474 psi				Shoe Type Float		Squeeze Type		
Pipe Rotated <input type="checkbox"/>		Pipe Reciprocated <input type="checkbox"/>		Shoe Depth 2980.0 ft		Tool Type		
No. Centralizers		Top Plugs 1	Bottom Plugs	Stage Tool Type		Tool Depth		
Cement Head Type Single				Stage Tool Depth		Tail Pipe Size		
Job Scheduled For Sep/08/2013		Arrived on Location Sep/08/2013	Leave Location Sep/08/2013	Collar Type Float		Tail Pipe Depth		
				Collar Depth 2935.0 ft		Sqz. Total Vol.		
Date	Time 24-hr clock	Treating Pressure PSI	Flow Rate B/M	Density LB/G	Volume BBL	Message		
09/08/2013	18:29:20					Started Acquisition		
09/08/2013	19:46:15					Safety Meeting		
09/08/2013	19:46:15					Flow 4 BBL Water		
09/08/2013	19:46:15	7	0.0	8.32	0.0			
09/08/2013	19:46:27					Pressure Test Lines		
09/08/2013	19:46:27	6	0.0	8.32	0.0			
09/08/2013	19:49:20	163	3.3	8.31	1.0			
09/08/2013	19:54:20	58	0.0	8.32	4.5			
09/08/2013	19:58:06					Low / High pressure Test Good		
09/08/2013	19:58:06	221	5.6	8.32	10.5			
09/08/2013	19:58:07					80 BBL PressureNET		
09/08/2013	19:58:07	221	5.4	8.32	10.6			
09/08/2013	19:59:20	206	5.4	8.32	17.2			
09/08/2013	20:04:20	192	5.4	8.32	44.5			
09/08/2013	20:09:20	152	5.4	8.32	71.8			
09/08/2013	20:14:20	190	5.4	8.99	99.1			
09/08/2013	20:16:25					10 BBL Water		
09/08/2013	20:16:25	179	5.4	8.32	110.5			
09/08/2013	20:16:30					20 BBL S001		
09/08/2013	20:16:30	181	5.4	8.32	110.9			
09/08/2013	20:16:35					10 BBL Water		

Well SGU 8511A-34 E34 496 8511A-34 E34 496			Field Story Gulch	Job Start Sep/08/2013	Customer EnCana	Job Number CMI-00258
Date	Time 24-hr clock	Treating Pressure PSI	Flow Rate B/M	Density LB/G	Volume BBL	Message
09/08/2013	20:18:35					30 BBL ZoneLOCK
09/08/2013	20:18:35	143	4.8	8.88	122.4	
09/08/2013	20:19:20	234	5.7	9.78	124.6	
09/08/2013	20:24:20	159	4.7	9.79	149.6	
09/08/2013	20:25:37					10 BBL Water
09/08/2013	20:25:37	128	4.7	8.33	155.6	
09/08/2013	20:26:36					Good Returns
09/08/2013	20:26:36	126	4.7	8.32	160.3	
09/08/2013	20:26:52					Water Sample 007937
09/08/2013	20:26:52	127	4.7	8.32	161.5	
09/08/2013	20:29:20	130	6.0	8.92	172.5	
09/08/2013	20:31:38					50 BBL Mudpush Express
09/08/2013	20:31:38	115	5.6	8.78	185.1	
09/08/2013	20:34:20	124	5.5	8.65	200.2	
09/08/2013	20:39:20	314	6.4	9.03	223.4	
09/08/2013	20:41:24					Start Mixing Lead Slurry
09/08/2013	20:41:24	329	6.5	9.10	236.8	
09/08/2013	20:41:26					Wet Sample 9.0 ppg
09/08/2013	20:41:26	326	6.5	9.10	237.0	
09/08/2013	20:41:27					Dry Sample 007731
09/08/2013	20:41:27	342	6.5	9.10	237.1	
09/08/2013	20:41:30					Good Returns
09/08/2013	20:41:30	321	6.5	9.10	237.5	
09/08/2013	20:44:20	350	6.5	9.13	256.0	
09/08/2013	20:49:20	354	6.5	9.14	288.7	
09/08/2013	20:54:20	341	6.6	9.11	321.5	
09/08/2013	20:59:20	348	6.5	9.10	354.2	
09/08/2013	21:04:20	371	6.5	9.09	387.0	
09/08/2013	21:09:20	332	6.6	9.10	419.8	
09/08/2013	21:14:20	345	6.6	9.10	452.6	
09/08/2013	21:19:20	341	6.6	9.08	485.4	
09/08/2013	21:24:20	357	6.6	9.09	518.2	
09/08/2013	21:29:20	330	6.5	9.12	551.1	
09/08/2013	21:34:20	383	6.5	9.09	583.9	
09/08/2013	21:39:20	391	6.6	9.03	616.7	
09/08/2013	21:44:20	368	6.6	9.11	649.4	
09/08/2013	21:47:09					End Lead Slurry
09/08/2013	21:47:09	397	6.6	9.06	667.9	
09/08/2013	21:49:20	173	3.4	11.07	680.2	
09/08/2013	21:51:17					Start Mixing Tail Slurry
09/08/2013	21:51:17	237	4.6	12.56	688.1	
09/08/2013	21:52:47					Wet Sample 12.5 ppg
09/08/2013	21:52:47	425	6.5	12.61	696.8	
09/08/2013	21:52:49					Dry Sample 007758
09/08/2013	21:52:49					Good Returns
09/08/2013	21:52:49	334	6.5	12.60	697.0	
09/08/2013	21:54:20	395	6.5	12.54	706.9	
09/08/2013	21:59:20	374	6.6	12.42	739.7	
09/08/2013	22:02:55					End Tail Slurry
09/08/2013	22:02:55	375	6.6	12.54	763.2	
09/08/2013	22:02:57					Drop Top Plug
09/08/2013	22:02:57	390	6.6	12.55	763.4	
09/08/2013	22:02:58					Start Displacement
09/08/2013	22:02:58	383	6.6	12.55	763.5	

Well			Field		Job Start		Customer		Job Number	
SGU 8511A-34 E34 496 8511A-34 E34 496			Story Gulch		Sep/08/2013		EnCana		CMI1-00258	
Date	Time 24-hr clock	Treating Pressure PSI	Flow Rate B/M	Density LB/G	Volume BBL	Message				
09/08/2013	22:03:00	377	6.5	12.56	763.8					
09/08/2013	22:04:20	199	4.6	12.54	770.3					
09/08/2013	22:09:20	110	3.2	9.92	779.7					
09/08/2013	22:12:30					Good Returns				
09/08/2013	22:12:30	238	6.7	8.41	798.1					
09/08/2013	22:14:20	234	6.6	8.42	810.3					
09/08/2013	22:19:20	225	6.7	8.31	843.6					
09/08/2013	22:24:20	225	6.7	8.34	876.9					
09/08/2013	22:29:20	233	6.7	8.30	910.3					
09/08/2013	22:32:38					Good Returns				
09/08/2013	22:32:38	286	6.7	8.32	932.3					
09/08/2013	22:34:20	337	6.6	8.32	943.6					
09/08/2013	22:39:20	457	6.6	8.32	976.7					
09/08/2013	22:44:20	378	4.0	8.32	1008.3					
09/08/2013	22:49:20	982	0.0	8.32	1018.5					
09/08/2013	22:49:34					Bump Top Plug				
09/08/2013	22:49:34	981	0.0	8.32	1018.5					
09/08/2013	22:49:35					End Displacement				
09/08/2013	22:49:35	982	0.0	8.32	1018.5					
09/08/2013	22:54:20	983	0.0	8.32	1018.6					
09/08/2013	22:57:28					Wait 10 Min				
09/08/2013	22:57:28	-3	0.0	8.32	1018.6					
09/08/2013	22:57:29					Bleed Off / 1 BBL Back				
09/08/2013	22:57:29	-3	0.0	8.32	1018.6					
09/08/2013	23:31:13					Pump Parasite / 14 bbl				

Post Job Summary

Average Pump Rates, bbl/min					Volume of Fluid Injected, bbl					
Slurry 5.4	N2	Mud 0.0	Maximum Rate 7.6		Total Slurry 565.0	Mud 0.0	Spacer 210.0	N2		
Treating Pressure Summary, psi					Breakdown Fluid					
Maximum 2889	Final -2	Average 333	Bump Plug to 950	Breakdown	Type		Volume 1157.0 bbl	Density		
Avg. N2 Percent		Designed Slurry Volume 559.0 bbl		Displacement 227.0 bbl		Mix Water Temp 80 degF		Cement Circulated to Surface? <input checked="" type="checkbox"/>		Volume 290.0 bbl
								Washed Thru Perfs <input type="checkbox"/>		To
Customer or Authorized Representative Mike Quintana				Schlumberger Supervisor Travis Willardson Cole Fairbrook				Circulation Lost <input type="checkbox"/>		Job Completed <input checked="" type="checkbox"/>
								-		-