



Scale: 5" / 100'  
Measured Depth Log

Well Name    Frye Farms #9

Location    1258' FSL 1173' FEL, SEC 32-T6N-R67W

State    Colorado

Country    U.S.A

API Number    #05-123-38128-0000

Region    DJ Basin

Spud Date    10-26-13 (Curve) / 11-10-13 (Lateral)    Drilling Completed    10-28-13 (Curve) / 11-12-13 (Lateral)

Surface Coordinates    Lat: 40.44192439

Long: -104.906536

Bottom Hole Coordinates    Lat: 40.4419846

Long: -104.8899158

Ground Elevation    4,880'

K.B. Elevation    4,902.5'

Logged Interval    5,000'    To    11,740'

Total Depth    11,740'

Formation    Sharon Springs-Niobrara

Type of Drilling Fluid    Fresh Water

Company    Tekton Windsor LLC

Address    640 PLAZA DRIVE, SUITE  
HIGHLANDS RANCH, CO

Name    Dominic Pitre / Dan Scott /

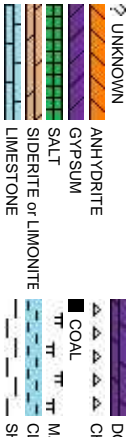
Company    Empirica

6741 Satsuma Dr.  
Houston, TX 77041  
(713)-466-7400

Equipment    ML-056 (curve) / ML-089

Comments

2 Man Logging Service  
Start Date: 10-26-2013(C  
Standby: 10-29-13 (Curv



R

## Operator

290,  
80129

## Geologist

Mick Thomas

## Other

(lateral)

(curve) / 11-10-13 (Lateral)

e)

## ock Types



## Accessories

### Fossils

F FOSSIL	ARGILLACEOUS	GLAUCONITE	Stringer
GASTROPOD	ARGILLITE GRAIN	GYPSIFEROUS	ANHYDRITE STRINGER
ALGAE	OOLITE	HEAVY MINERAL	BENTONITE STRINGER
AMPHIPORA	OSTRACOD	BITUMENOUS SUBSTANCE	KAOLIN
BELEMNITE	PELECYPOD	BRECCIA FRAGMENTS	MARLSTONE
BIOCLASTIC	PELLET	CALCAREOUS	MINERAL CRYSTALS
BRACHIOPOD	PISOLITE	CARBONACEOUS FLAKES	NODULES
BRIZOZA	PLANT REMAINS	CHITK	PHOSPHATE PELLET
CEPHALOPOD	PLANT SPORES	CHTLT	PYRITE
CORAL	SCAPHOPOD	COAL - THIN BEDS	SALT CAST
CRINOID	STROMATOPOROID	DOLOMITIC	SANDY
ECHINOID	FELDSPAR	FERRUGINOUS PELLET	SILICEOUS
FISH	Minerals	FERRUGINOUS	SILTY
FORAMINIFERA	ANHYDRITIC	FERRUGINOUS	TUFFACEOUS

## Other Symbols

### Oil Show

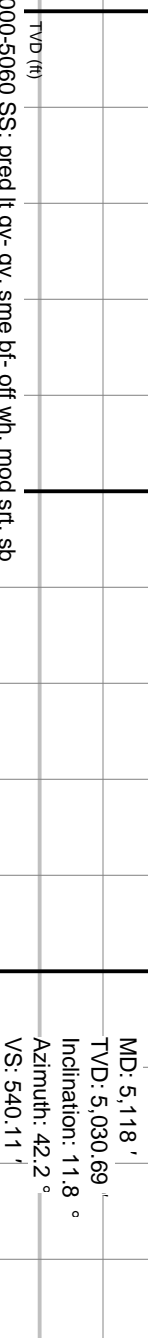
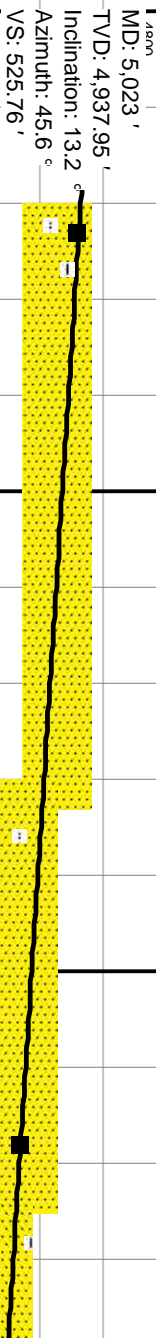
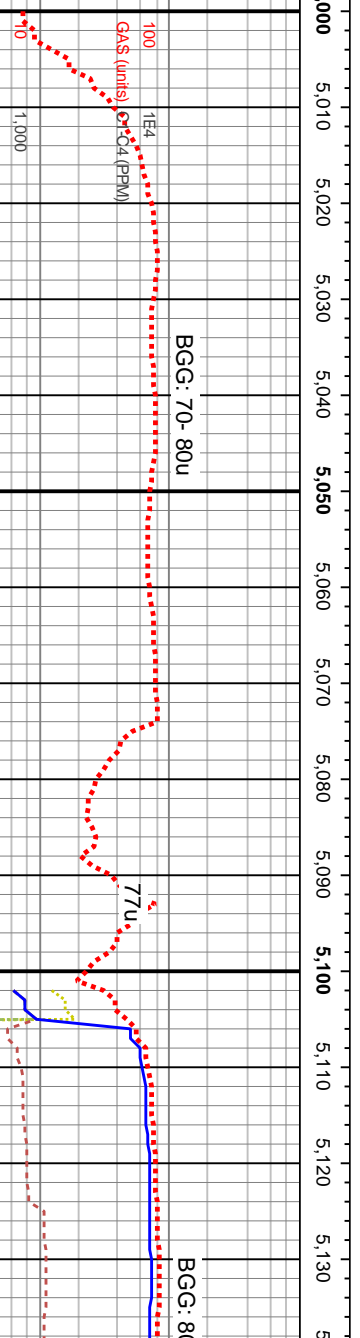
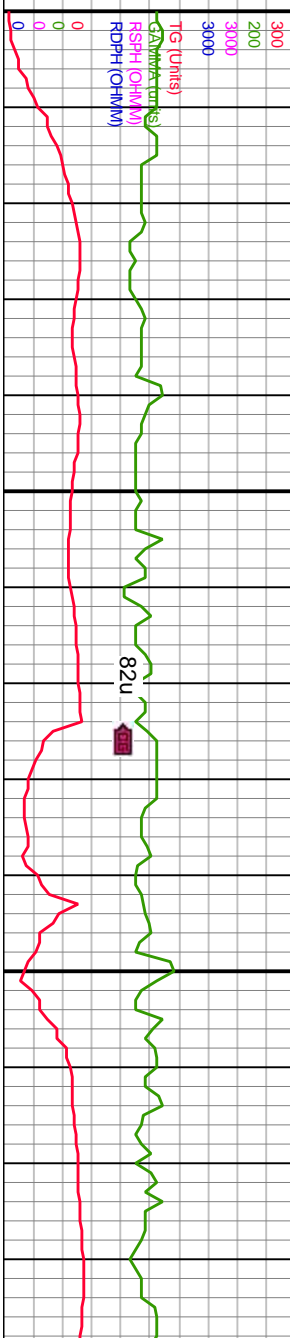
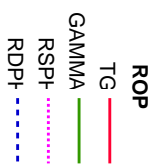
MOLDIC	FAULT	WIRELINE TESTED - LEFT	E EARTHY
ORGANIC	FORMATION TOP	WIRELINE TESTED - RT	FINELYXLN
DEAD	PINPOINT	GAS SHOW	GRAINSTONE
EVEN	VUGGY	MINDEPTH MN DEPTH	L LITHOGRAPHIC

### Engineering

QUESTIONABLE	NORMAL FAULT	ANGULAR	MX MICROXLN
SPOTTED STAINING	OIL SHOW	ROUNDED	MS MUDSTONE
BIT	OVERTURNED STRATA	SUBANG	PS PACKSTONE
CONNECTION (LEFT)	REVERSE FAULT	SUBRD	WS WACKESTONE
CONNECTION (RIGHT)	SIDEWALL CORE (LEFT)		
CONNECTION GAS	SIDEWALL CORE (RIGHT)		
E EARTHY	SLIDE	BOUNDSTONE	M MODERATE
FENESTRAL	SURVEY	CHALKY	P POOR
FRACTURE	TRIP GAS	CRYPTOXLN	W WELL
INTERCRYSTALLINE			
INTEROOLITIC			

### Textures

### Sorting



5000-5060 SS; pred it gy-gy, sme bf-off whn, mod srt, sb-ang grs, mod frm-mod hd, blkly, v f gr, pred slty, occ arg, w cmtid, pred clus, sli calc, sme lth frags, tr pp por

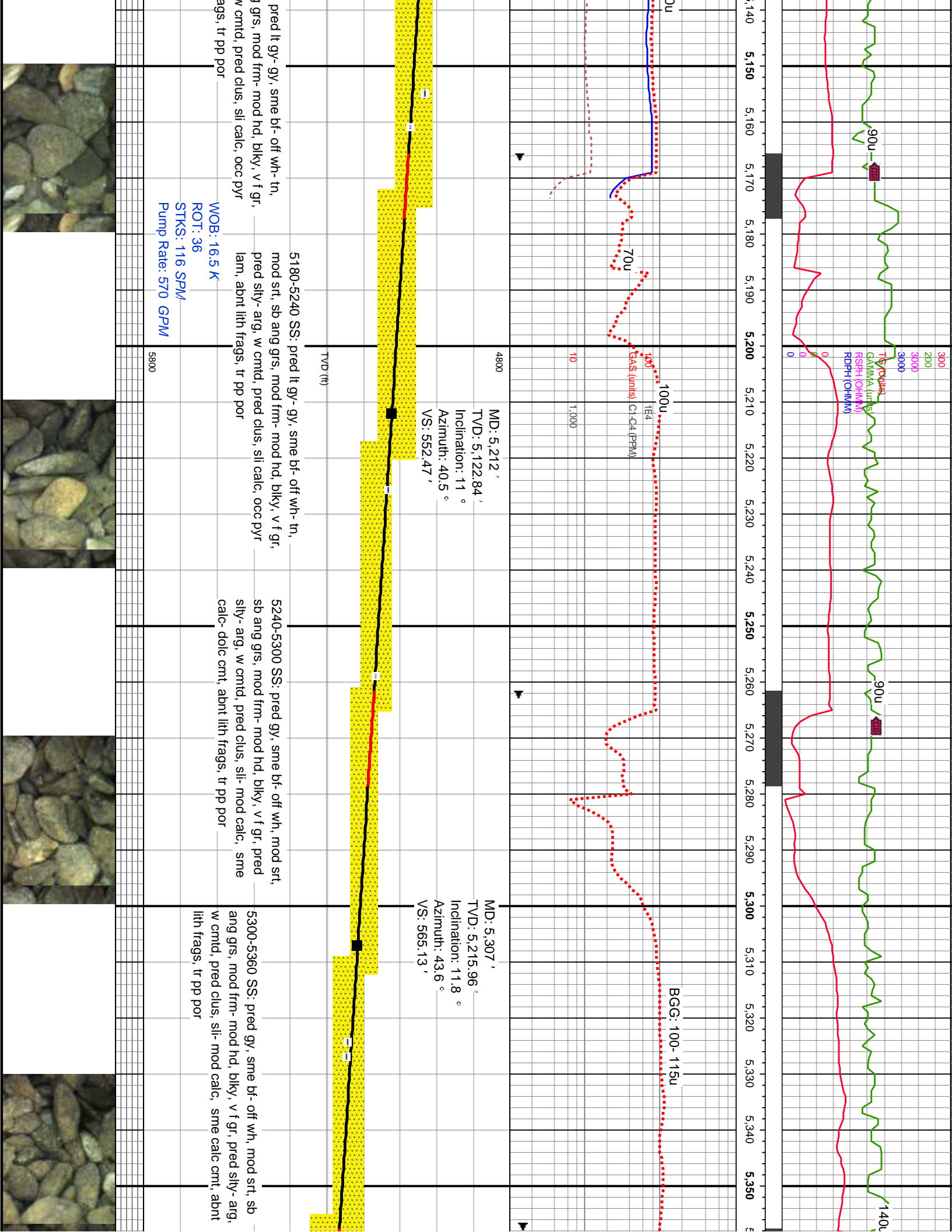
5060-5120 SS: pred lt gy-gy, sme bf-off wh, mod srt, sb ang gis, mod frm-mod hd, bllky, v f gr, pred sily, occ arg, w cmtd, pred clus, sli calc, sme lth frags, tr pp por

5120-5180 SS:  
mod srt, sb ang  
pred silty-arg, v  
lam, abt lith fr

DP @ 5,000' Pump Rate: 589 GPM

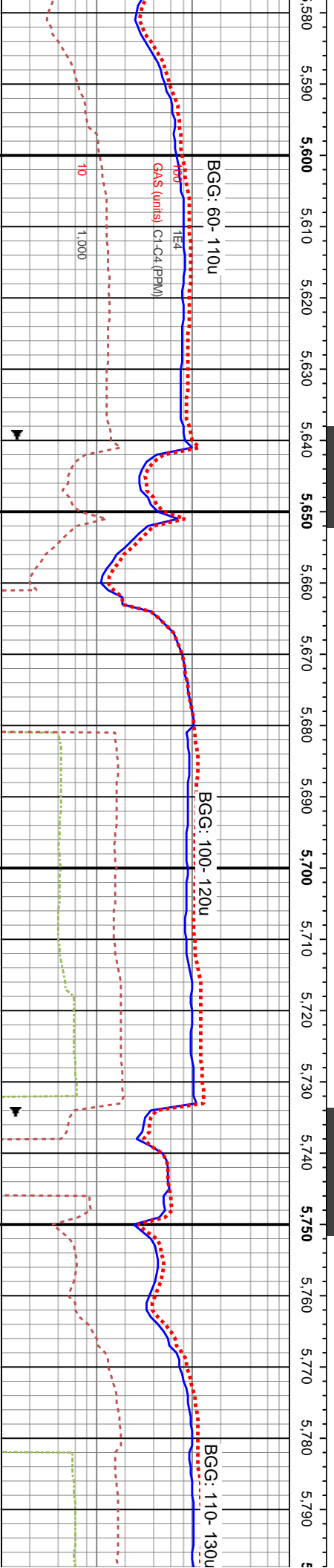
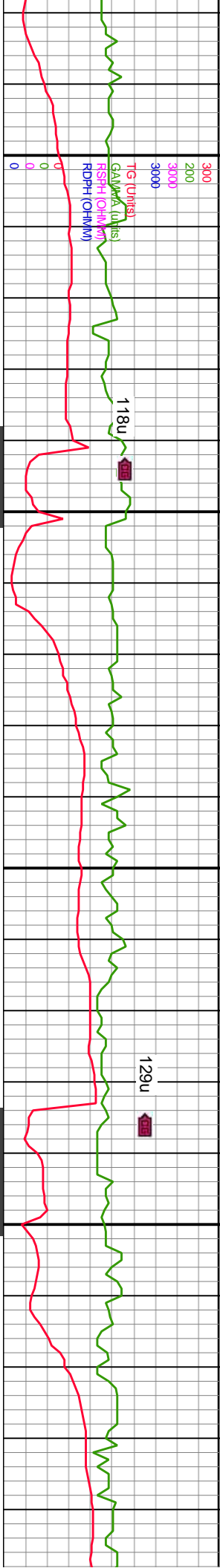
WOB: 16.5 K  
ROT: 37  
STKS: 120 SPM  
Pump Rate: 589 GPM  
3000





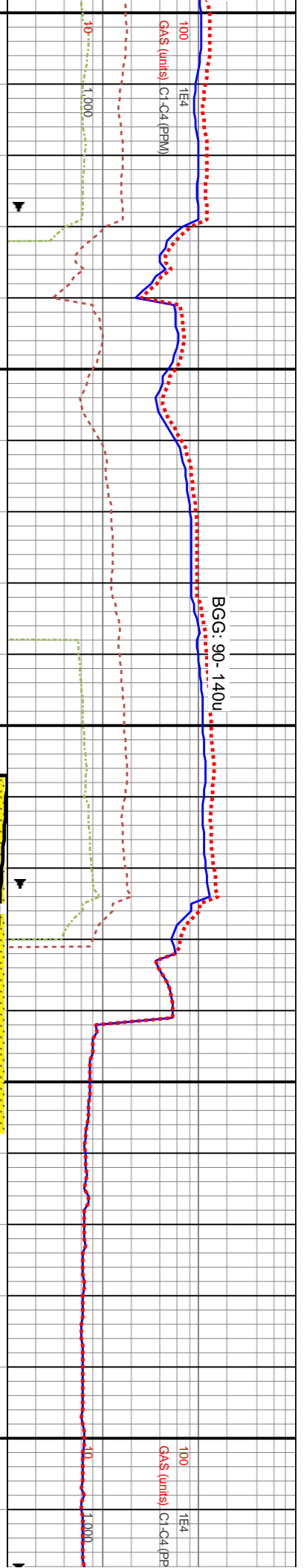
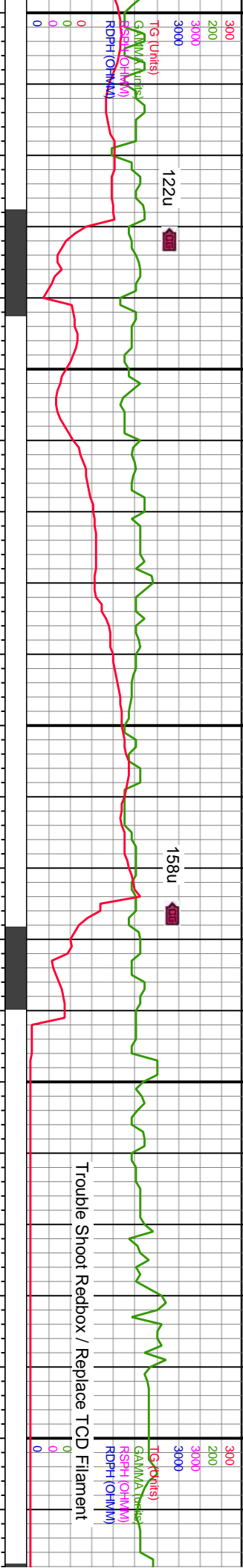






off wh, sme brn, clus, mod frm- d sily- arg, w cmt, calc cmt, about lith	5600-5660 SS: pred gy, sme bf- off wh, sme brn, mod srt, sb ang grs, sme sl trnsi clus, mod frm- mod hd, blk, occ ply, v f gr, pred sily- arg, w cmt, pred clus, sli- mod calc, sme v calc cmt, about lith frags, rr bent, tr pp por	5660-5720 SS: pred gy, occ sme bf- off wh, sme brn, mod srt, sb ang grs, sme sl trnsi clus, mod frm- mod hd, blk, occ ply, v f gr, pred sily- arg, w cmt, pred clus, sli- mod calc, sme v calc cmt, about lith frags, rr bent, tr pp por	5720-5780 SS: pred gy, occ sme bf- off wh, sme brn, mod srt, sb ang grs, sme sl trnsi clus, mod frm- mod hd, blk, occ ply, v f gr, pred sily- arg, w cmt, pred clus, sli- mod calc, sme v calc cmt, about lith frags, rr bent, tr pp por	5780-5840 SS: pred gy, occ sme bf- off wh, sme brn, mod srt, sb ang grs, sme sl trnsi clus, mod frm- mod hd, blk, occ ply, v f gr, pred sily- arg, w cmt, pred clus, sli- mod calc, sme v calc cmt, about lith frags, rr bent, tr pp por
MD: 5,591 ' TVD: 5,493.32 ' Inclination: 14.2 ° Azimuth: 42.7 ° VS: 606.05 '	MD: 5,687 ' TVD: 5,586.49 ' Inclination: 13.5 ° Azimuth: 48.5 ° VS: 713.68 '	MD: 5,782 ' TVD: 5,678.71 ' Inclination: 14.3 ° Azimuth: 48 ° VS: 732.91 '		
B: 16.2 K T: 38 KS: 116 SPM mp Rate: 570 GPM				





5840 SS: pred gy, occ sme bf- off wh, mod srt, sb ang grs, sme sl trnsl, mod frm- mod hd, blkly, occ pily, v f gr, y- arg, w cntld, pred clus, sli- mod me v calc cnt, abnt lith frags, rr bent, tr

5840-5900 SS: pred gy, occ sme bf- off wh, sme brn, mod srt, sb ang grs, sme sl trnsl clus, mod frm- mod hd, blkly, occ pily, v f gr, pred sily- arg, w cntld, pred clus, sli- mod calc, sme v calc cnt, abnt lith frags, rr bent, tr pp por

MD: 5.970 '  
TVD: 5,861.66 '  
Inclination: 12.3 °  
Azimuth: 44.1 °  
VS: 767.6 '

WOB: 16.4 K  
ROT: 35  
STKS: 116 SPM  
Pump Rate: 570 GPM

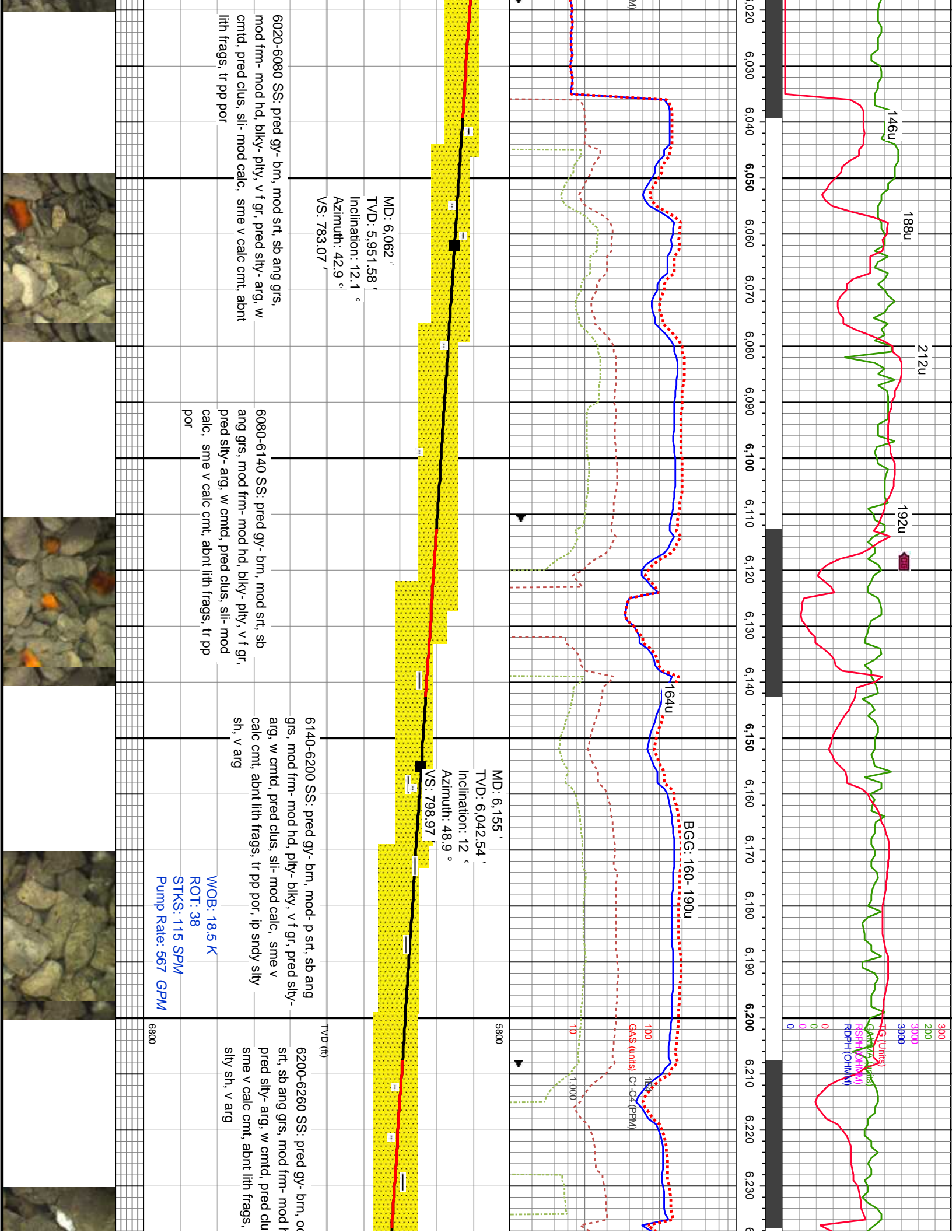
MD: 5.876 '  
TVD: 5,770 '  
Inclination: 13.3 °  
Azimuth: 42.2 °  
VS: 751.12 '

5900-5960 SS: pred gy, occ sme bf- off wh, sme brn, mod srt, sb ang grs, sme sl trnsl clus, mod frm- mod hd, blkly, occ pily, v f gr, pred sily- arg, w cntld, pred clus, sli- mod calc, sme v calc cnt, abnt lith frags, rr bent, tr pp por

5960-6020 SS: pred gy- brn, mod srt, sb ang grs, mod frm- mod hd, blkly- pily, v f gr, pred sily- arg, w cntld, pred clus, sli- mod calc, sme v calc cnt, abnt lith frags, tr pp por

WOB: 21.7 K  
ROT: 36  
STKS: 116 SPM  
Pump Rate: 568 GPM

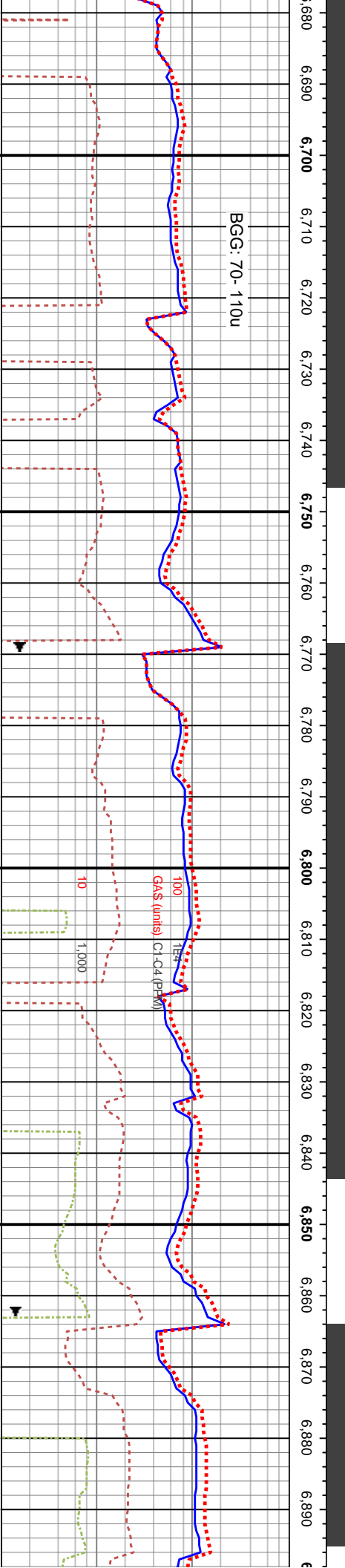












6680-6740 SS: pred gy-med gy brn, occ off wh-wh, mod-p-sft, sb ang grs, mod frm-mod hd, pily-bilky, v f gr, pred silty-arg, w cmted, pred clus, sil-mod calc, sme sil cmt, sme v calc cmt, sme lith frags

6740-6800 SS. pred gy-med gy brn, occ off wh-wh, mod-p str, sb ang grs, mod frm-mod hd, ply-blk, v f gr, pred silty-arg, w cmtd, pred clus, sil-mod calc, sme sil cmf, sme v calc cmf, sme lith frags

6800-6860 SS: pred gy-med gy brn, occ off wh-wh,  
mod-p srt, sb ang grs, mod frm-mod hd, ply-blky, v f  
gr, pred silty-arg, w cmtd, pred clus, sil-mod calc,  
sme sil cmt, sme v calc cmt, sme lith frags

6860-6920 SS: pred gy-med gy brr  
mod-p stt, sb ang grs, mod frm-mo  
gr, silty, v ang thru, w cmt, pred clu  
sme sil-calc cmt, sme lith frags, sm

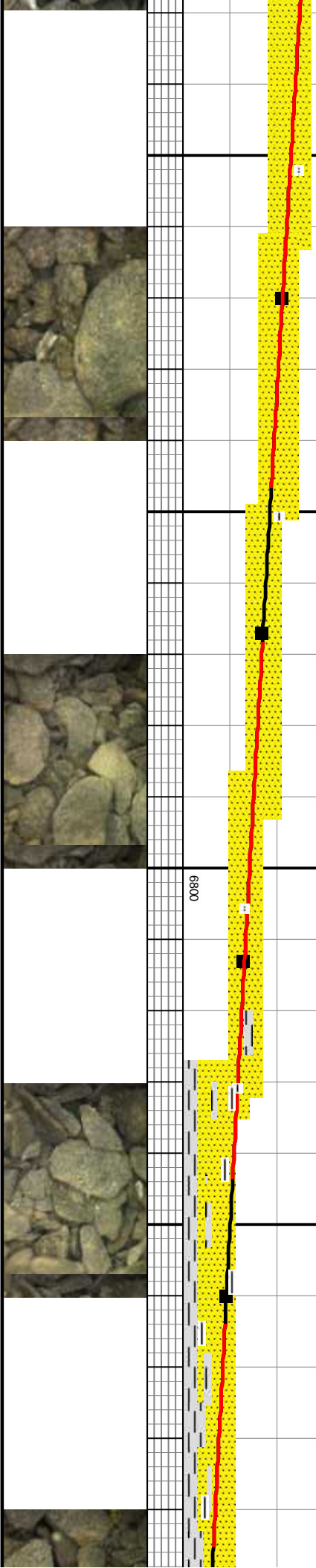
MD: 6,720 '   
 TVD: 6,587.7 '   
 Inclination: 25.2 °   
 Azimuth: 71 °   
 VS: 922.03 '

MD: 6,767 '  
TVD: 6,629.68 '  
Inclination: 28.2 °  
Azimuth: 70.5 °  
VS: 942.82 '

MD: 6,813 '   
 TVD: 6,669.27 '   
 Inclination: 33 °   
 Azimuth: 75.6 °   
 VS: 966 '   
 TVD

MD: 6,860 '  
TVD: 6,707.91 '  
Inclination: 36.4 °  
Azimuth: 77.4 °  
VS: 992.68 '

DP @ 6,900'

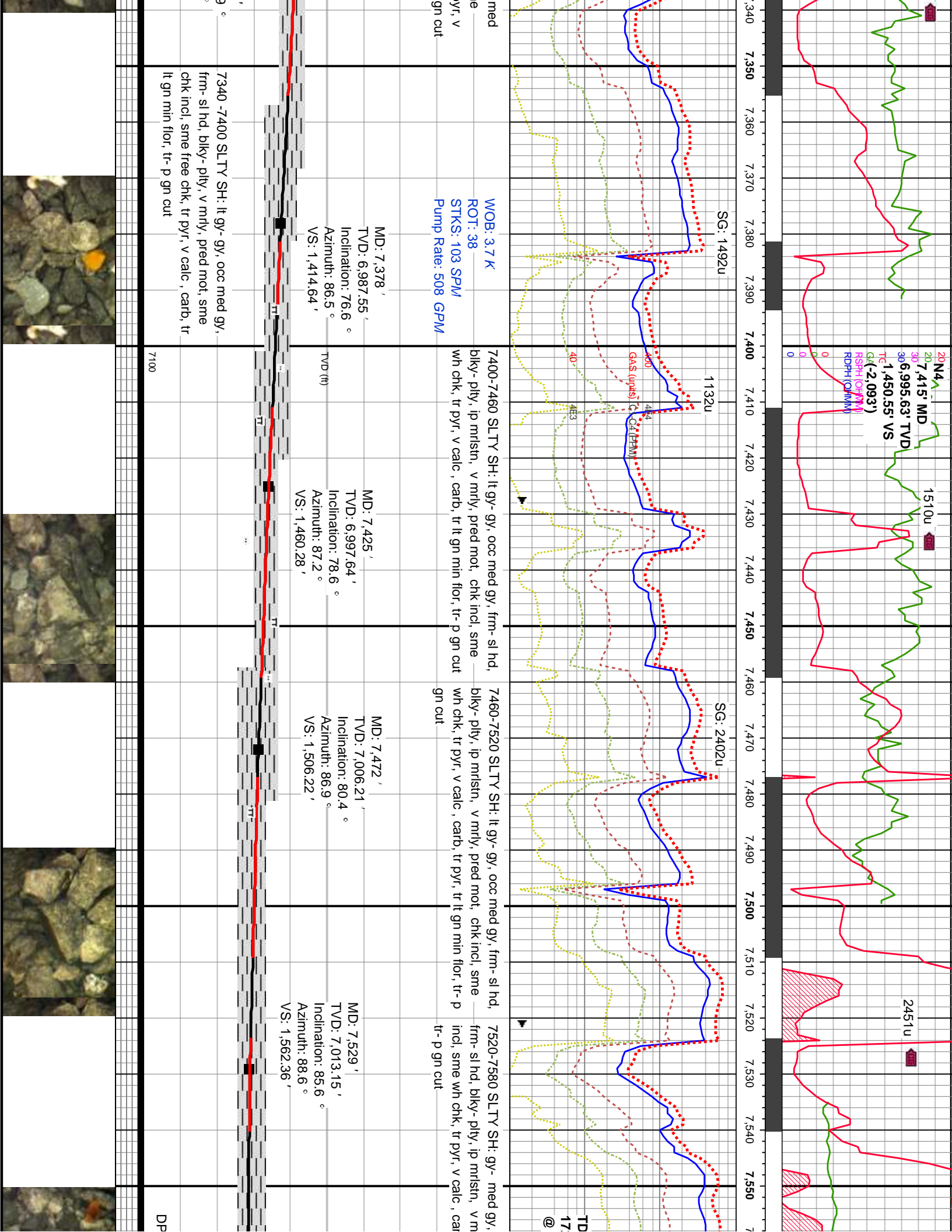


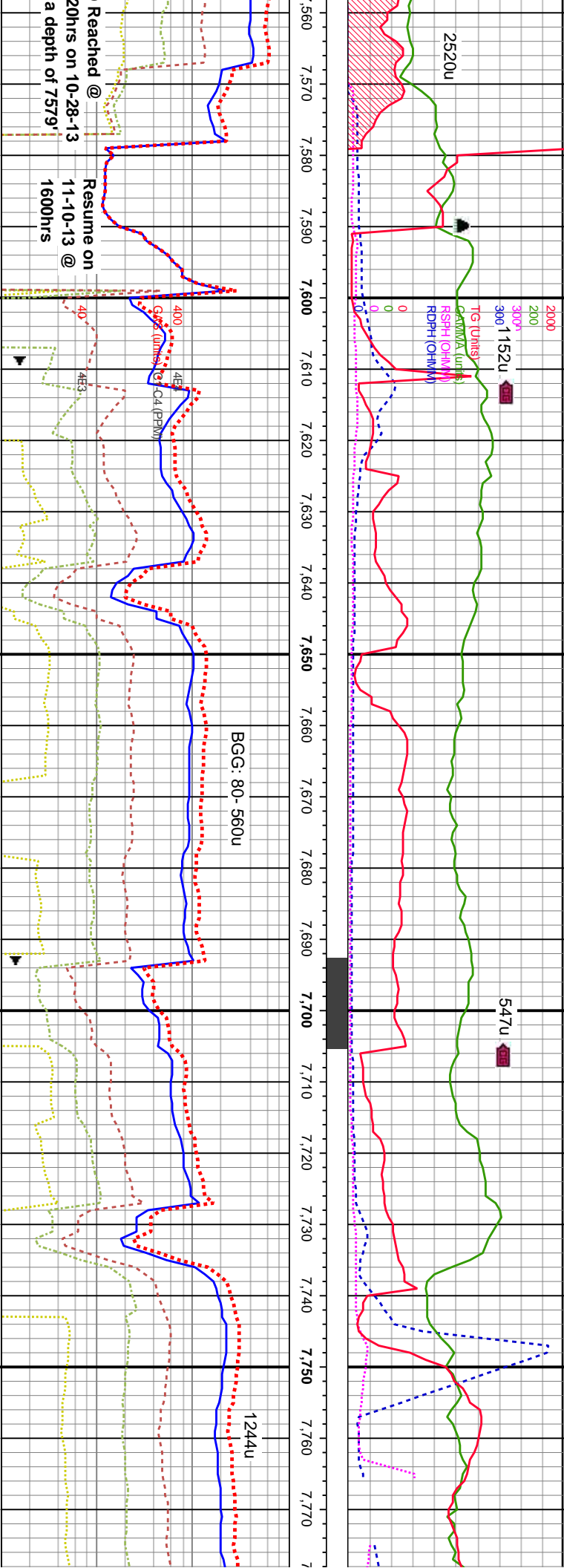












occ dk gy- blk, rly, pried mot, chk b, tr lt gn min flor, 7580-7640 SLTY SH: gy- med gy, occ dk gy-blk, frm-si hd, blk- pty, ip mlstn, mrlly, sme mot, abnt chk incl, sme wh chk, v calc, sme cal, carb, tr lt gn min flor, tr- p gn cut 7640-7700 SLTY SH: gy- med gy, occ dk gy-blk, frm-si hd, blk- pty, ip mlstn, mrlly, sme mot, chk incl, sme wh chk, v calc, sme cal, carb, tr lt gn min flor, tr- p gn cut 7700-7760 SLTY SH: gy- med gy, occ dk gy-blk, frm-si hd, blk- pty, ip mlstn, mrlly, sme mot, occ chk incl, trace wh chk, v calc, sme cal, carb, tr lt gn min flor, tr- p gn cut 7760-7760 SLTY SH: gy- med gy, occ dk gy-blk, frm-si hd, blk- pty, ip mlstn, mrlly, sme mot, occ chk incl, trace wh chk, v calc, sme cal, carb, tr lt gn min flor, tr- p gn cut

Bit #: 3  
Type: DP405S  
Size: 6 1/8  
Depth In: 7,592 '  
Depth Out: 11,740 '  
Hours: 44.5 hrs  
Avg Ft/Hr: 93'/hr  
Jets: 5\*16s  
S/N: 7033495

MD: 7,623 '  
TVD: 7,017.87 '  
Inclination: 88.64 °  
Azimuth: 88.39 °  
VS: 1,655.38 '

MD: 7,717 '  
TVD: 7,018.23 '  
Inclination: 90.92 °  
Azimuth: 87.97 °  
VS: 1,748.59 '

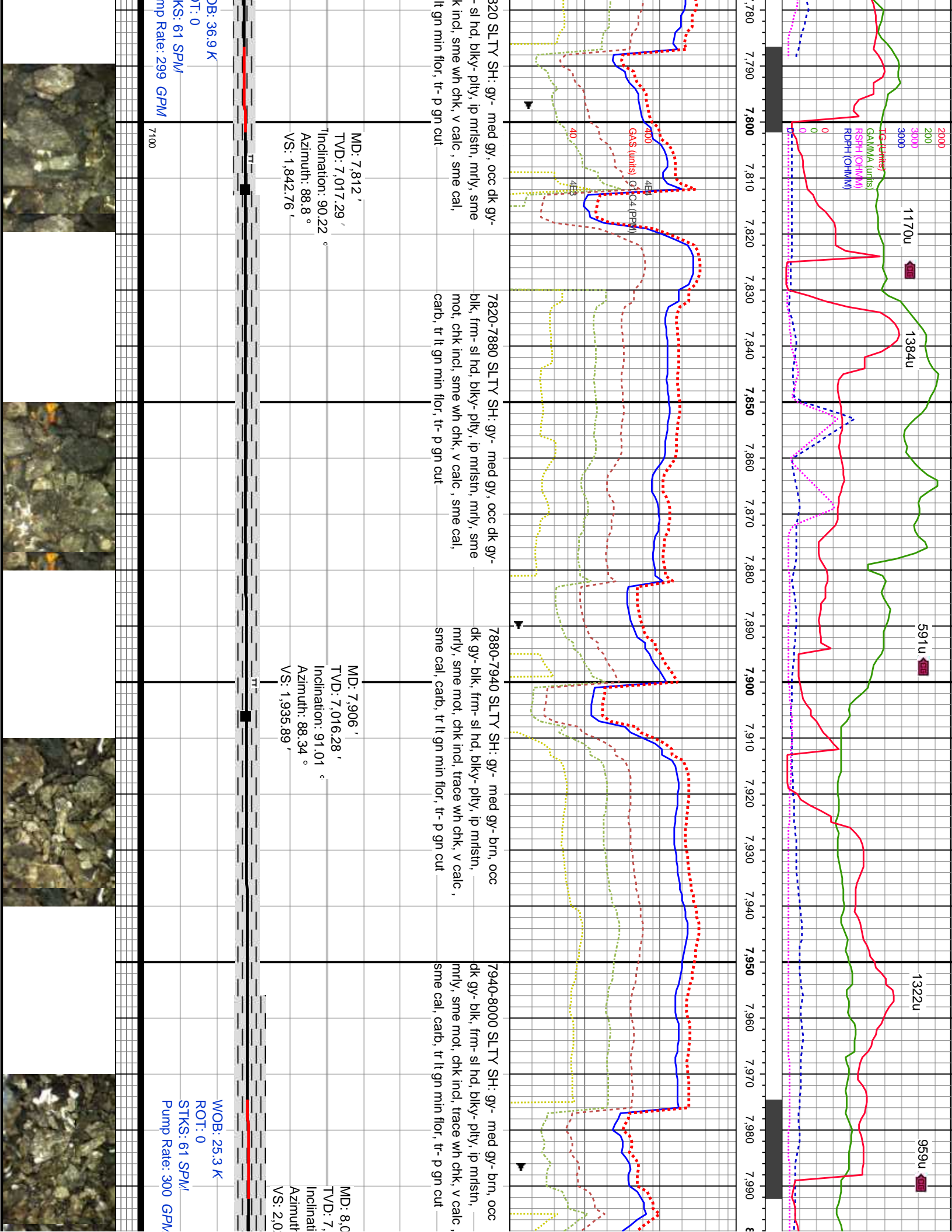
WOB: 18.7 K  
ROT: 47  
STKS: 48 SPM  
Pump Rate: 237 GPM  
@ 7,583'

7100

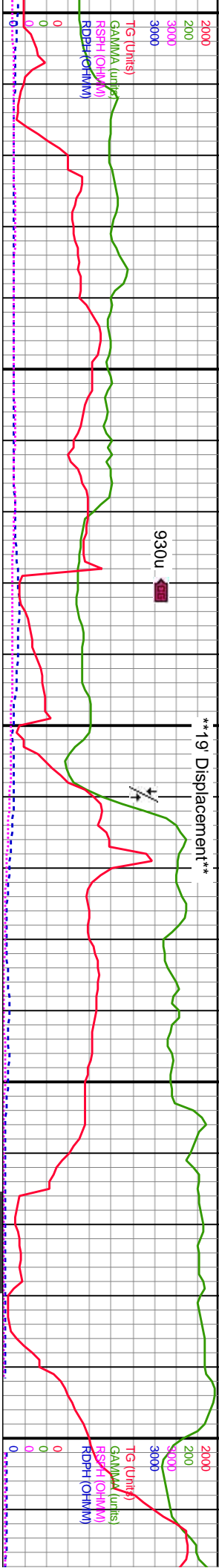
WC  
RC  
ST  
Pu



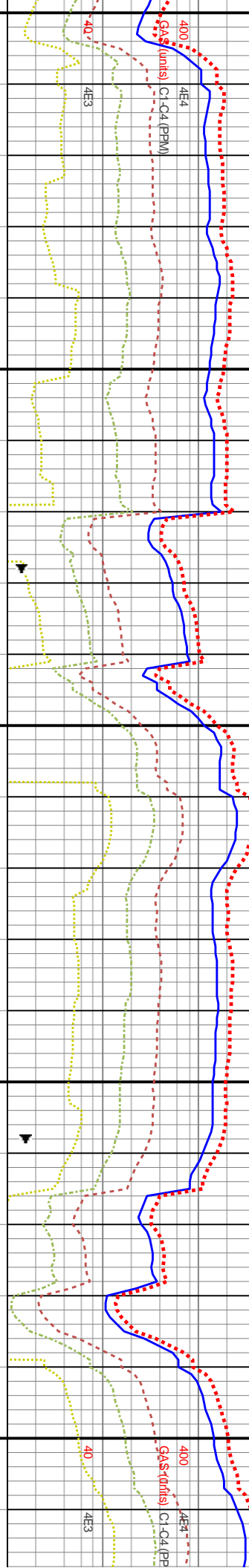








BGG: 610-910u

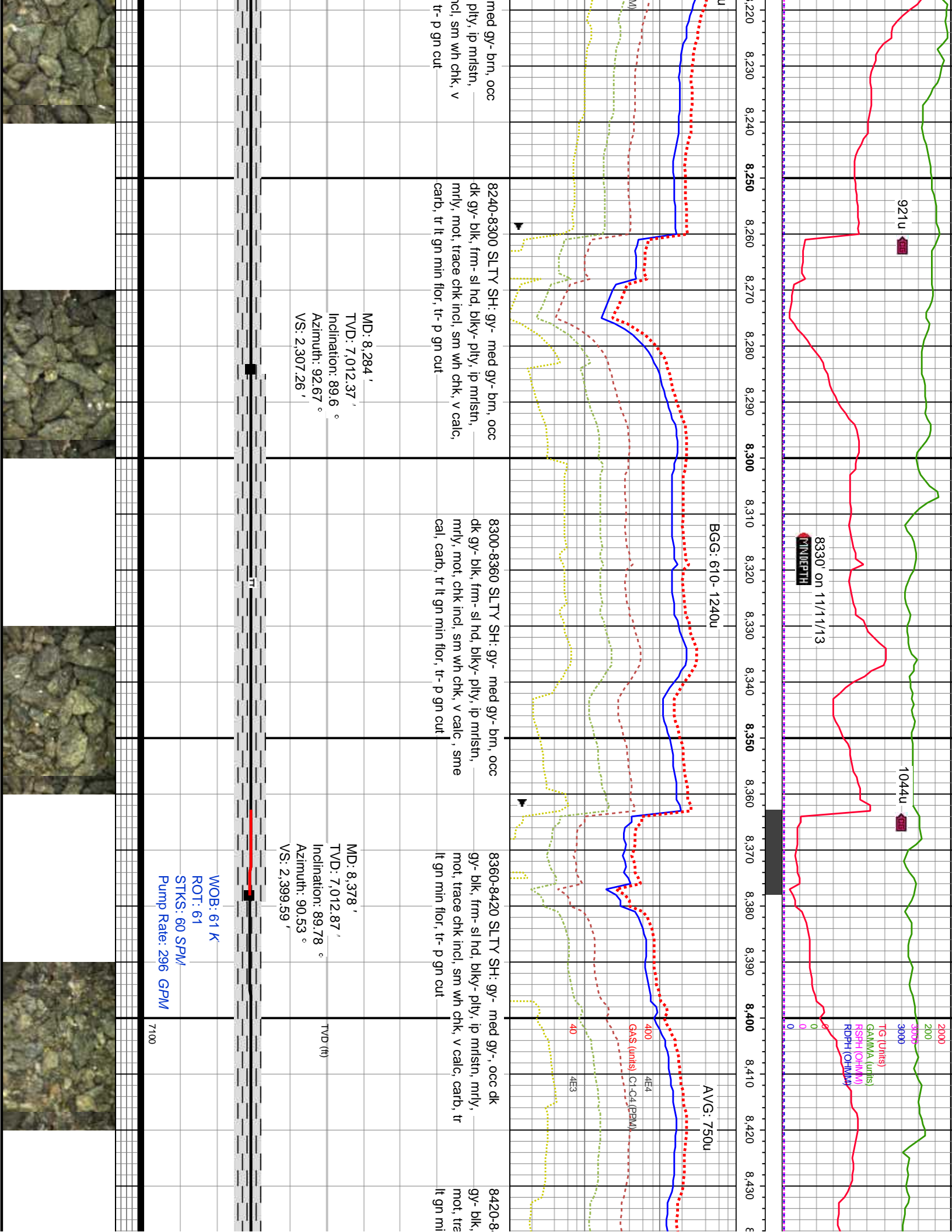


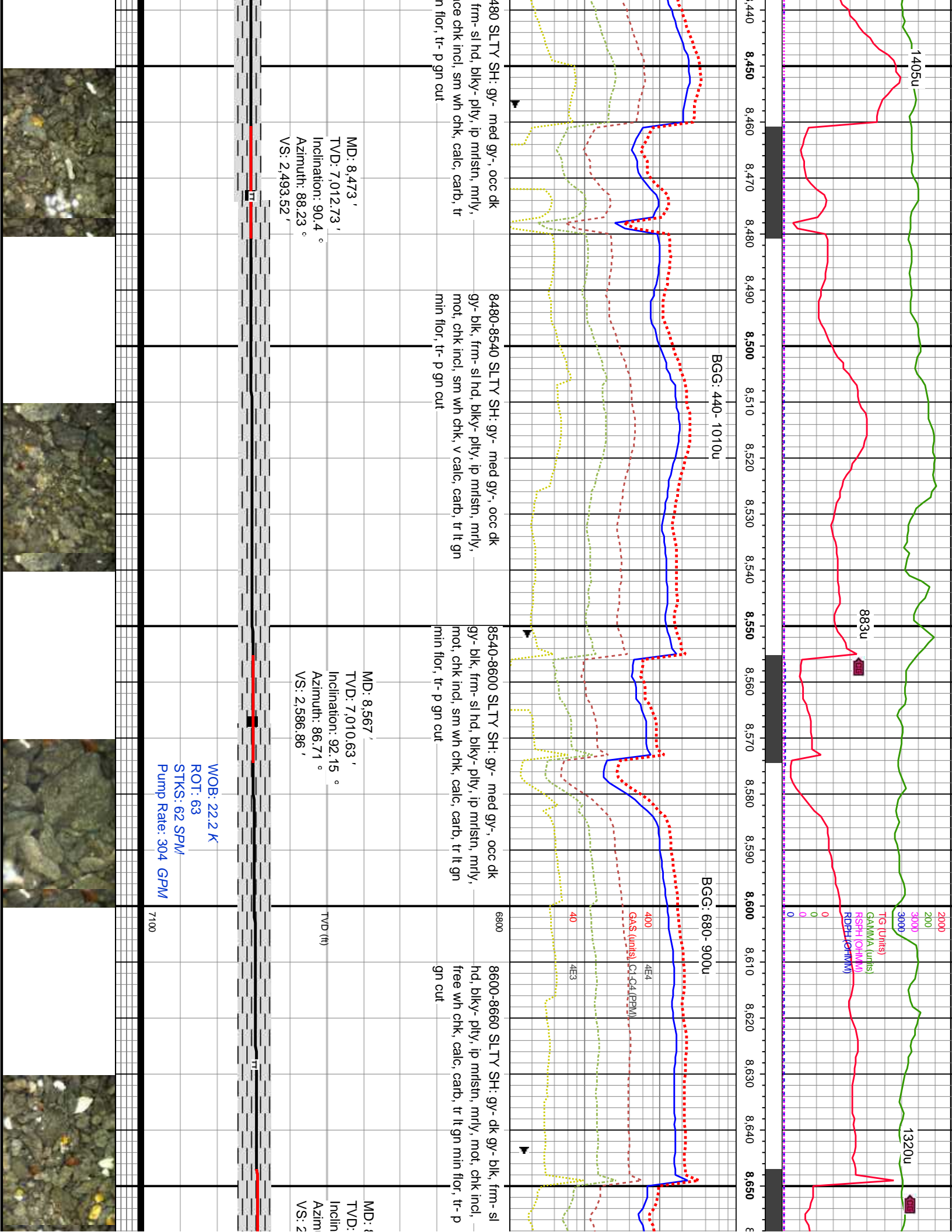
8000-8060 SLTY SH: gy- med gy- bm, occ dk gy- blk, frm- sl hd, blk- ply, ip mrlstn, mrlly, sme mot, chk incl, sm wh chk, v calc, sme cal, carb, tr lt gn min flor, tr- p gn cut	8060-8120 SLTY SH: gy- med gy- bm, occ dk gy- blk, frm- sl hd, blk- ply, ip mrlstn, mrlly, sme mot, chk incl, sm wh chk, v calc, sme cal, carb, tr lt gn min flor, tr- p gn cut	8120-8180 SLTY SH: gy- med gy- bm, occ dk gy- blk, frm- sl hd, blk- ply, ip mrlstn, mrlly, sme mot, trace chk incl, sm wh chk, v calc, sme cal, carb, tr lt gn min flor, tr- p gn cut	8180-8240 SLTY SH: gy- dk gy- blk, frm- sl hd, blk- mrlly, sme mot, trace chk in calc, carb, tr lt gn min flor,
--	--	---	--

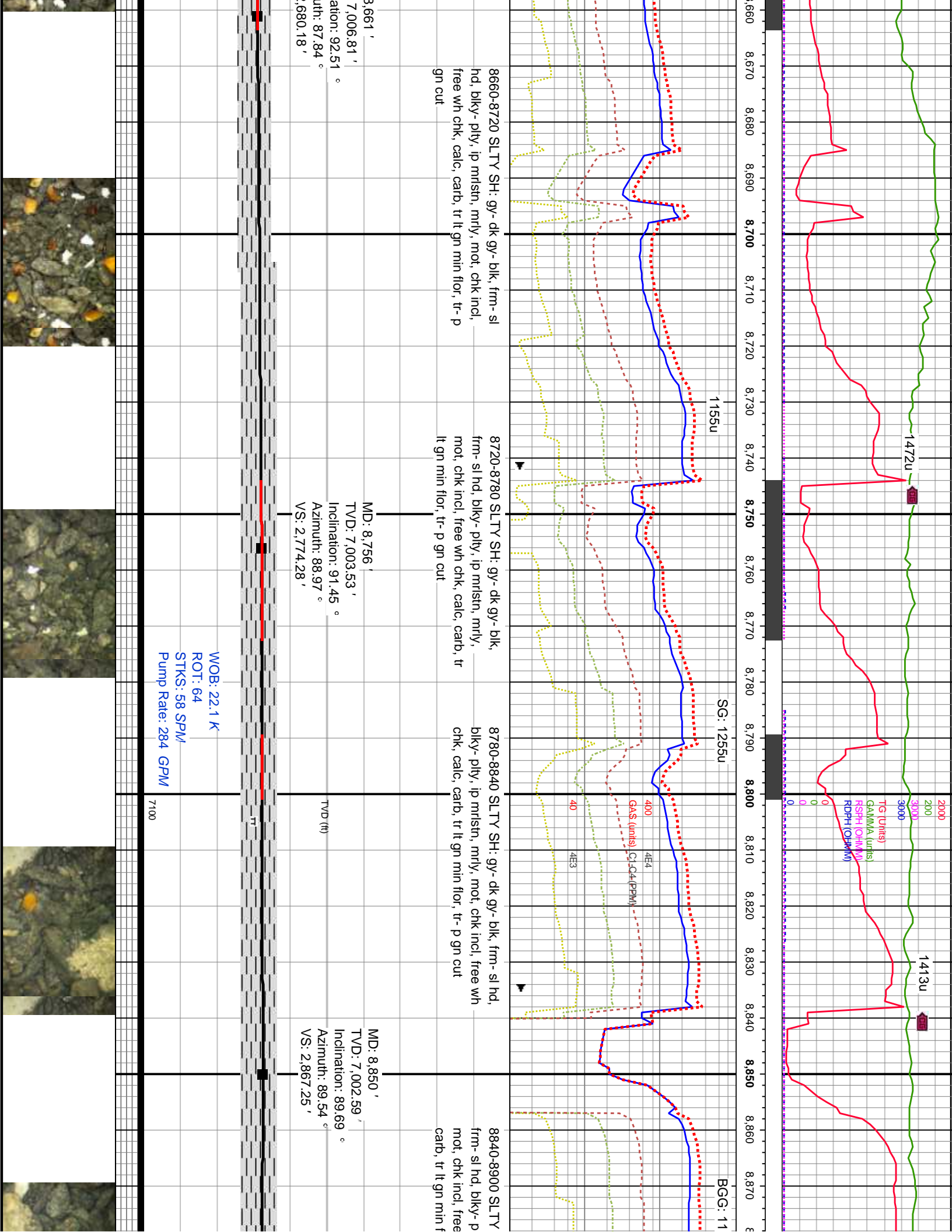
MD: 8,095 ' TVD: 7,012.29 ' Inclination: 90.75 ° Azimuth: 92.6 ° VS: 2,122.34	MD: 8,189 ' TVD: 7,011.85 ' Inclination: 89.78 ° Azimuth: 92.79 ° VS: 2,214.32 '
---	--

WOB: 20.3 K ROT: 60 STKS: 56 SPM/ Pump Rate: 277 GPM
---



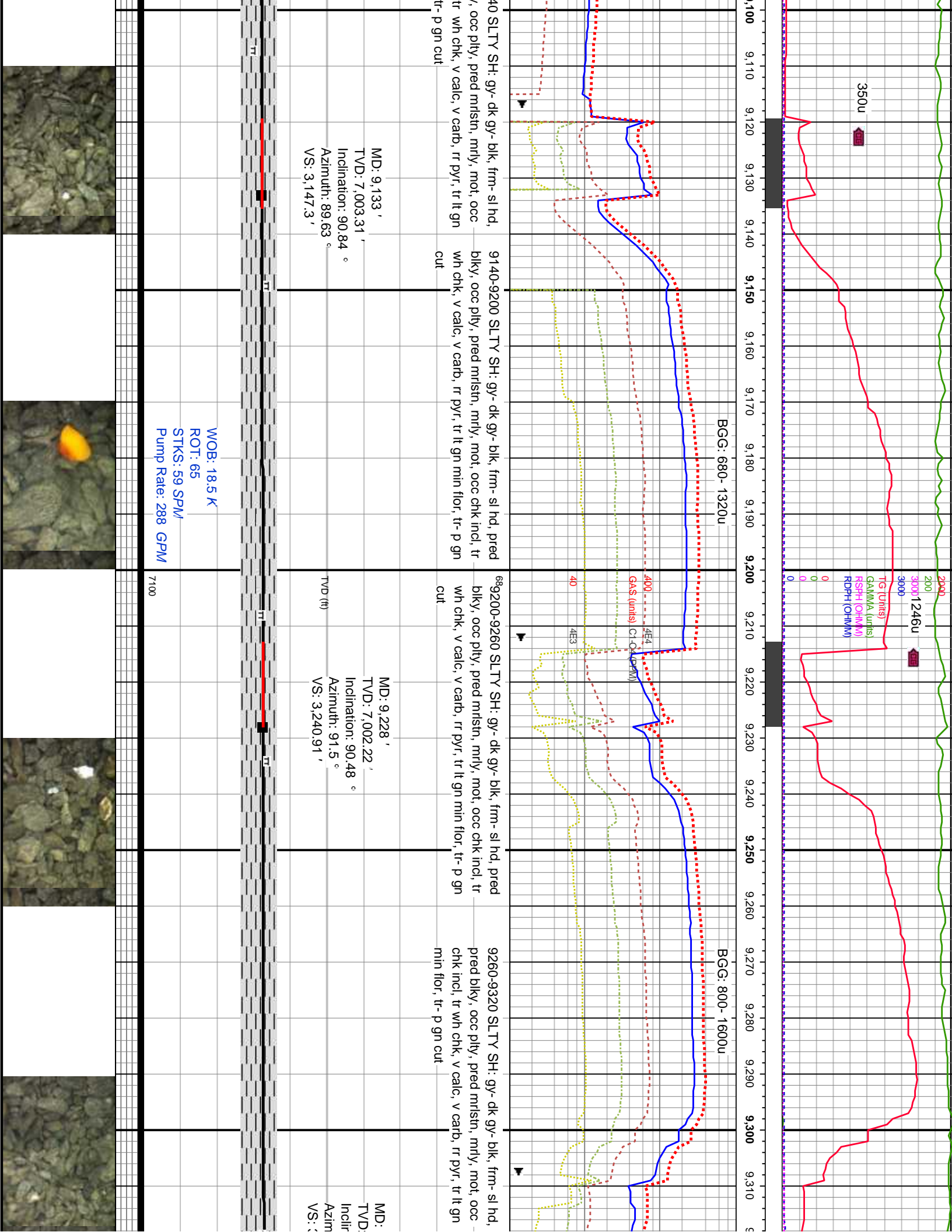


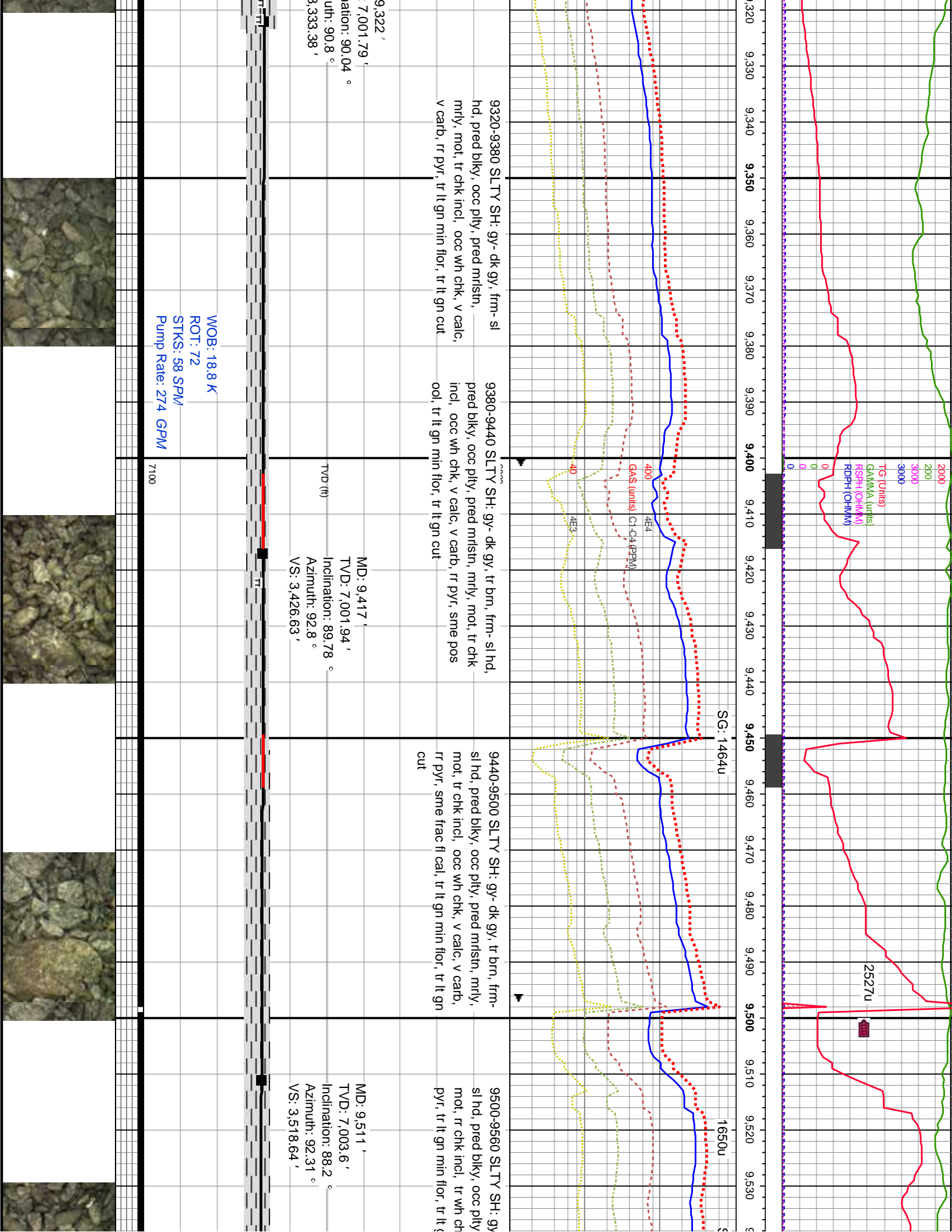


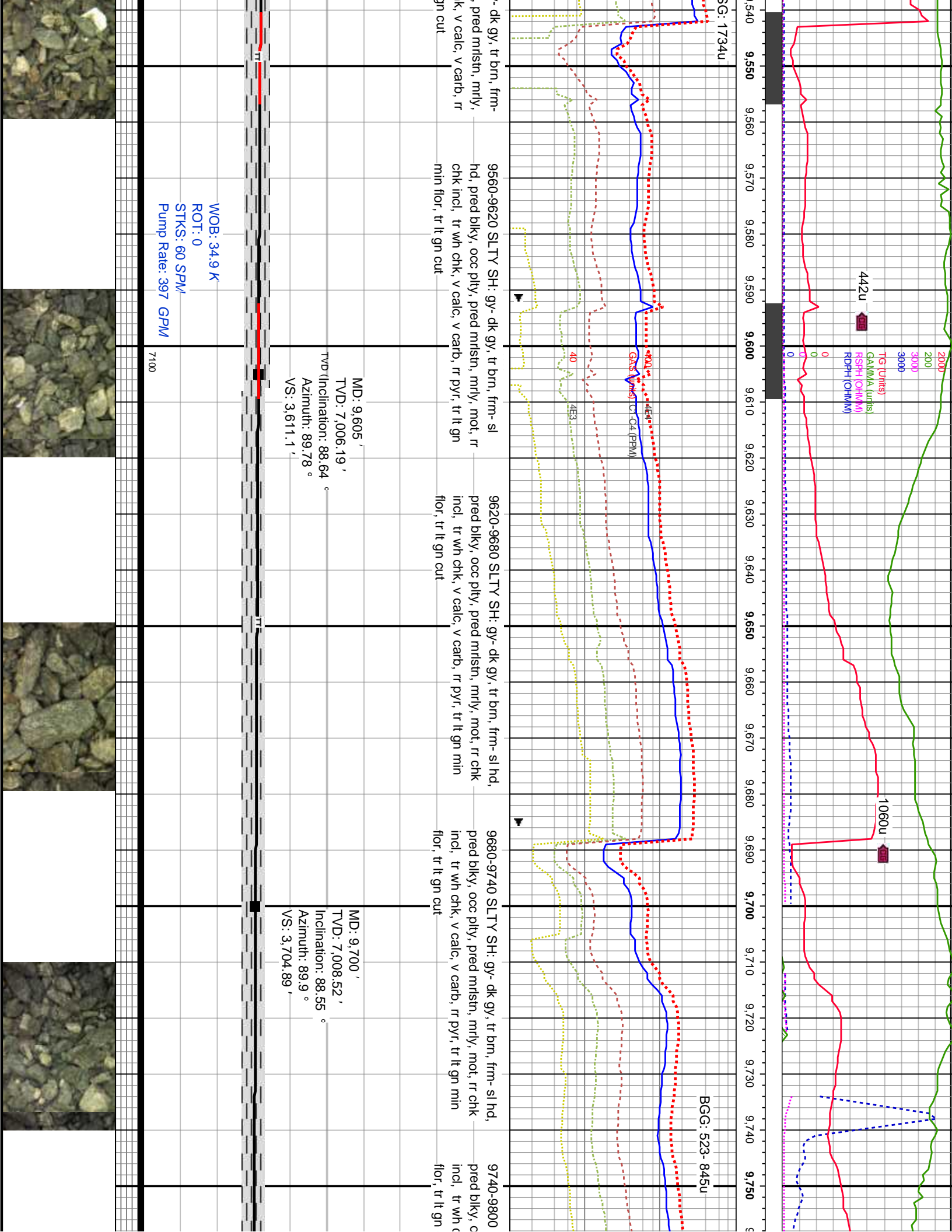




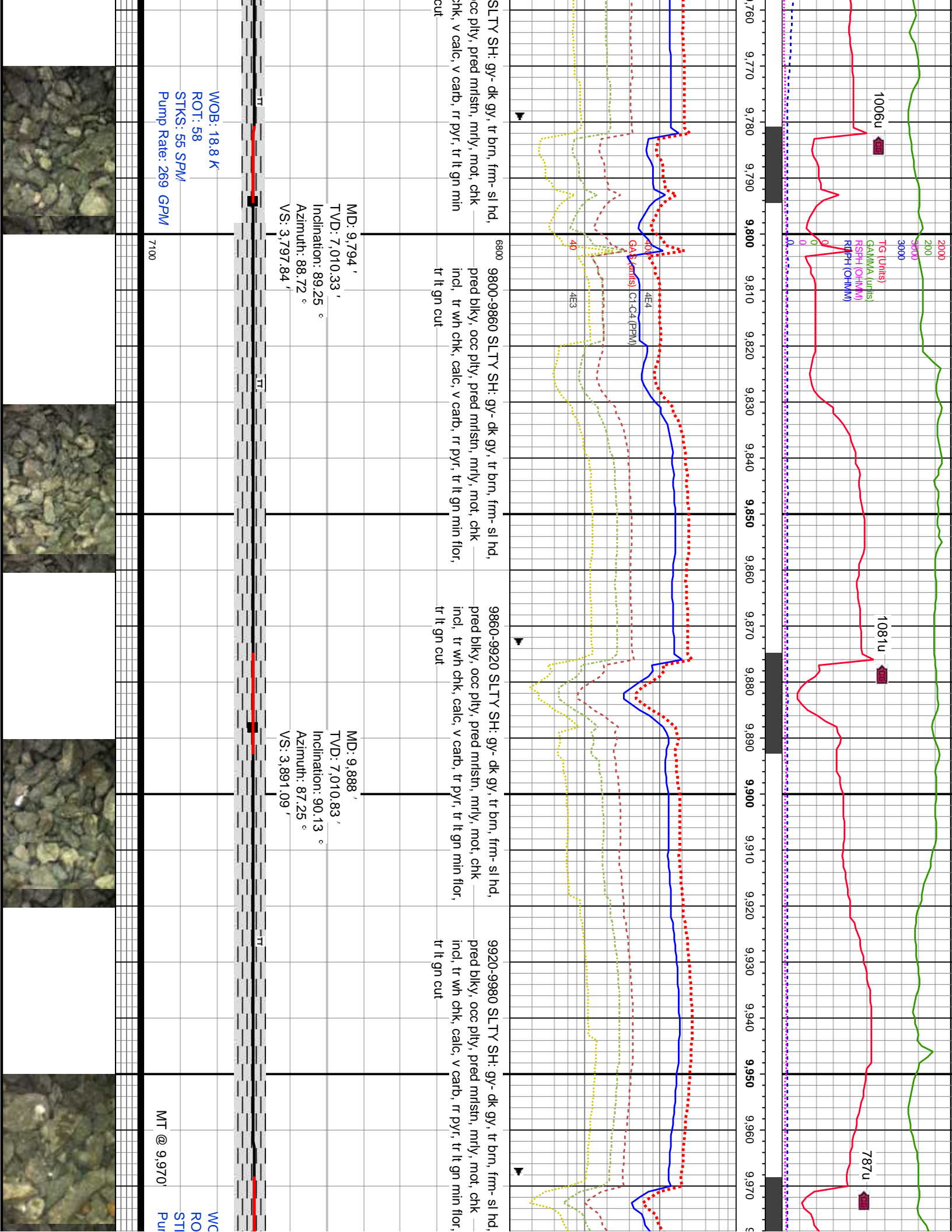


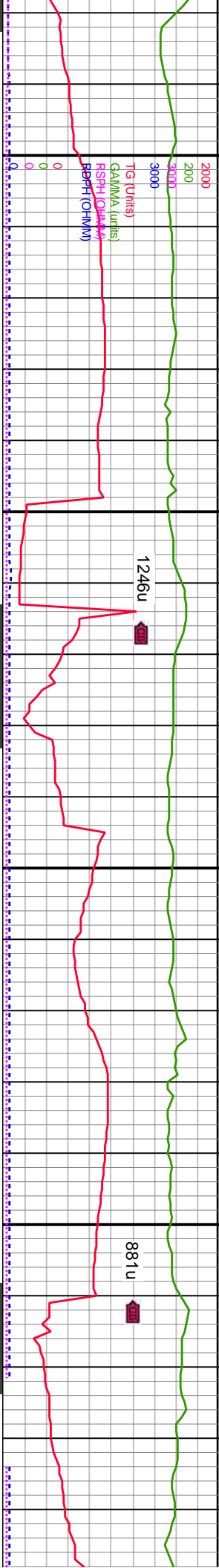




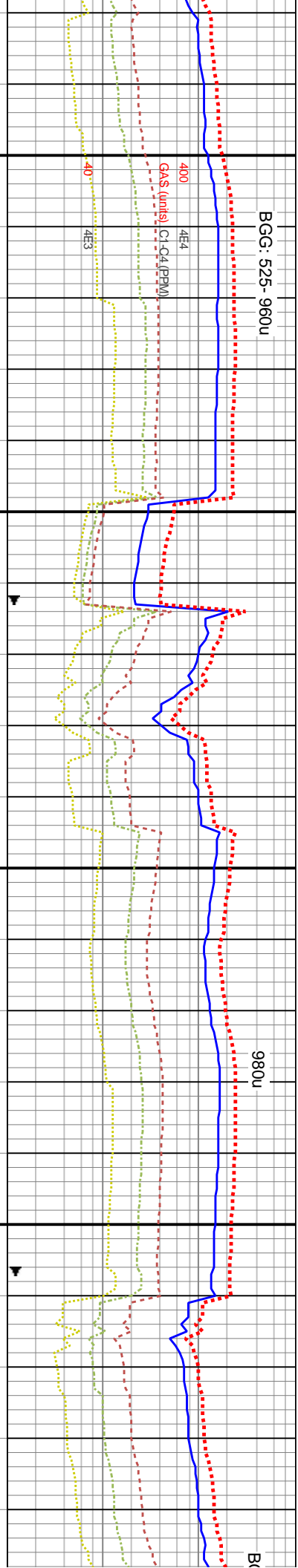








9,980 9,990 10,000 10,010 10,020 10,030 10,040 10,050 10,060 10,070 10,080 10,090 10,100 10,110 10,120 10,130 10,140 10,150 10,160 10,170 10,180 10,190



9980-10040 SLTY SH: gy- dk gy, tr brn, frm- sl  
hd, pred blkly, occ pily, pred mlstn, mfly, mot, —  
chk incl, tr wh chk, calc, v carb, tr pyr, tr lt gn min  
flor, tr lt gn cut

10040-10100 SLTY SH: gy- dk gy, tr brn, frm- sl  
hd, pred blkly, occ pily, pred mlstn, mfly, mot, —  
chk incl, tr wh chk, calc, v carb, occ pyr, tr lt gn  
min flor, tr lt gn cut

10100-10160 SLTY SH: gy- dk gy, tr brn, frm- sl  
hd, pred blkly, occ pily, pred mlstn, mfly, mot, —  
chk incl, tr wh chk, calc, v carb, occ pyr, tr lt gn  
min flor, tr lt gn cut

10160-10220 SLTY SH: gy- dk gy, tr brn, frm- sl  
hd, pred blkly, occ pily, pred mlstn, mfly, mot, —  
chk incl, tr wh chk, calc, v carb, occ pyr, tr lt gn  
min flor, tr lt gn cut

MD: 9,983 '  
TVD: 7,009.89 '  
Inclination: 91.01 °  
Azimuth: 87.31 °  
VS: 3,985.48 '

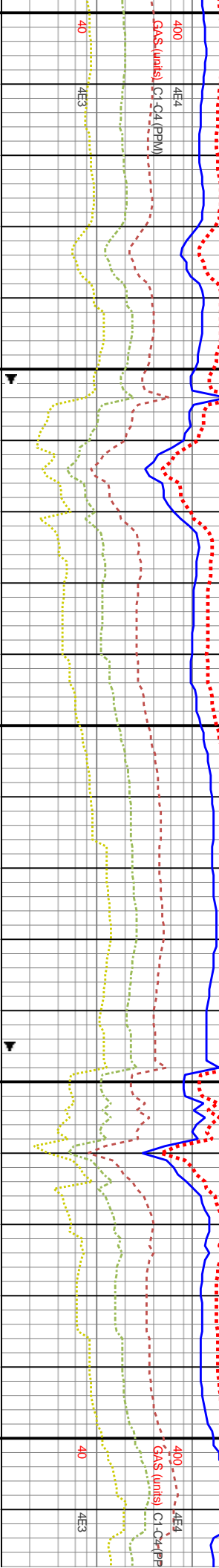
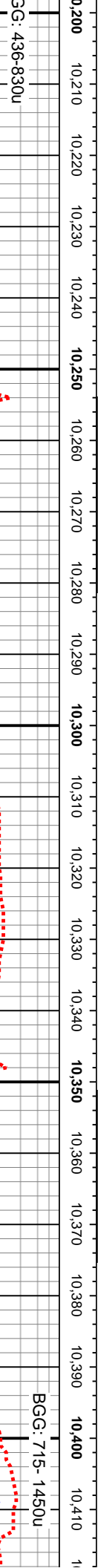
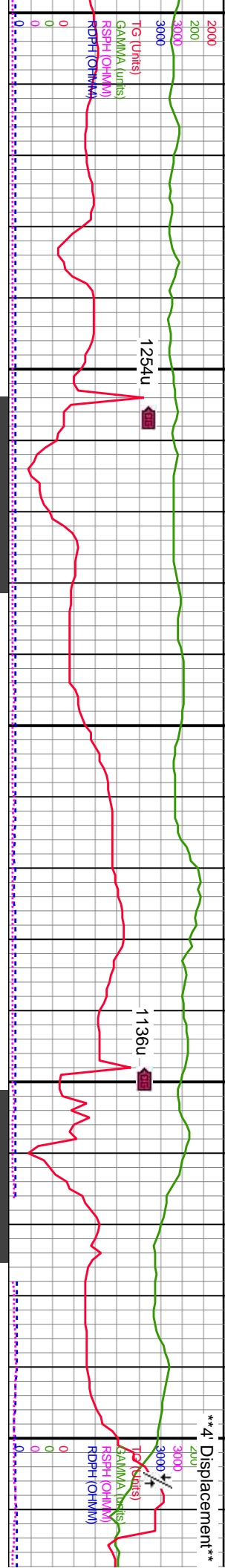
MD: 10,077 '  
TVD: 7,009.39 '  
Inclination: 89.6 °  
Azimuth: 87.53 °  
VS: 4,078.85 '

MD: 10,172 '  
TVD: 7,009.69 '  
Inclination: 90.04 °  
Azimuth: 88.77 °  
VS: 4,173.07 '

WB: 17 K  
T: 59  
KS: 55 SPM/  
Pump Rate: 279 GPM

WB: 11.2 K  
ROT: 60  
STKS: 56 SPM/  
Pump Rate: 276 GPM



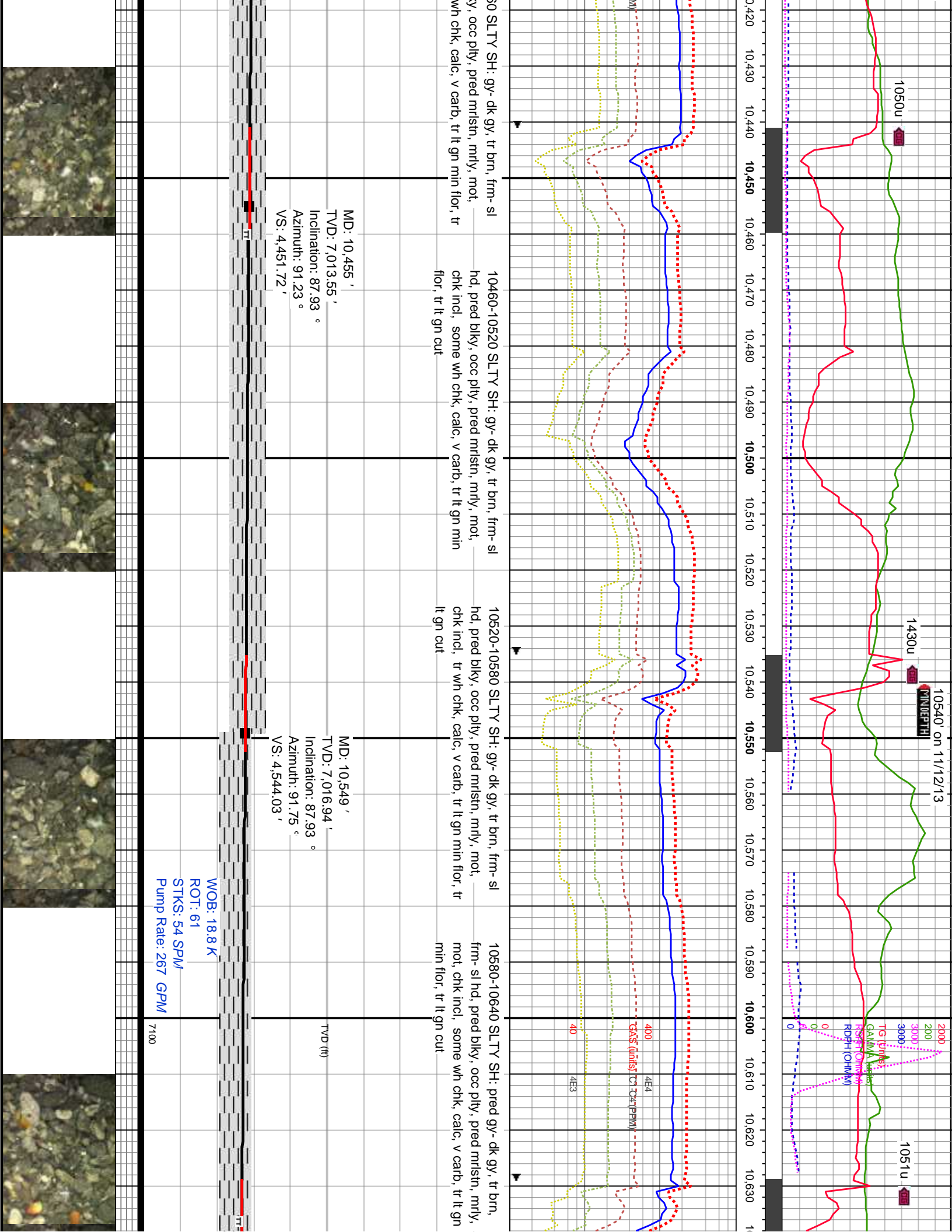


k gy, tr brn, frm-sl	10220-10280 SLTY SH: gy- dk gy, tr brn, frm-sl	10280-10340 SLTY SH: gy- dk gy, tr brn, frm-sl	10340-10400 SLTY SH: gy- dk gy, tr brn, frm-sl	6800 10400-10460
mlstn, mfly, mot,	hd, pred blk, occ ply, pred mlstn, mfly, mot,	hd, pred blk, occ ply, pred mlstn, mfly, mot,	hd, pred blk, occ ply, pred mlstn, mfly, mot,	hd, pred blk
b, occ pyr, tr lt gn	chk incl, tr wh chk, calc, v carb, tr pyr, tr lt gn min	chk incl, tr wh chk, calc, v carb, tr pyr, tr lt gn min	chk incl, tr wh chk, calc, v carb, tr pyr, tr lt gn min	chk incl, tr
	flor, tr lt gn cut	flor, tr lt gn cut	flor, tr lt gn cut	lt gn cut

TVD (ft)	MD: 10,266 ' TVD: 7,009.62 ' Inclination: 90.04 ° Azimuth: 90.01 ° VS: 4,266.01 '	TVD (ft)	MD: 10,360 ' TVD: 7,010.7 ' Inclination: 88.64 ° Azimuth: 92.18 ° VS: 4,358.48 '
----------	---	----------	--

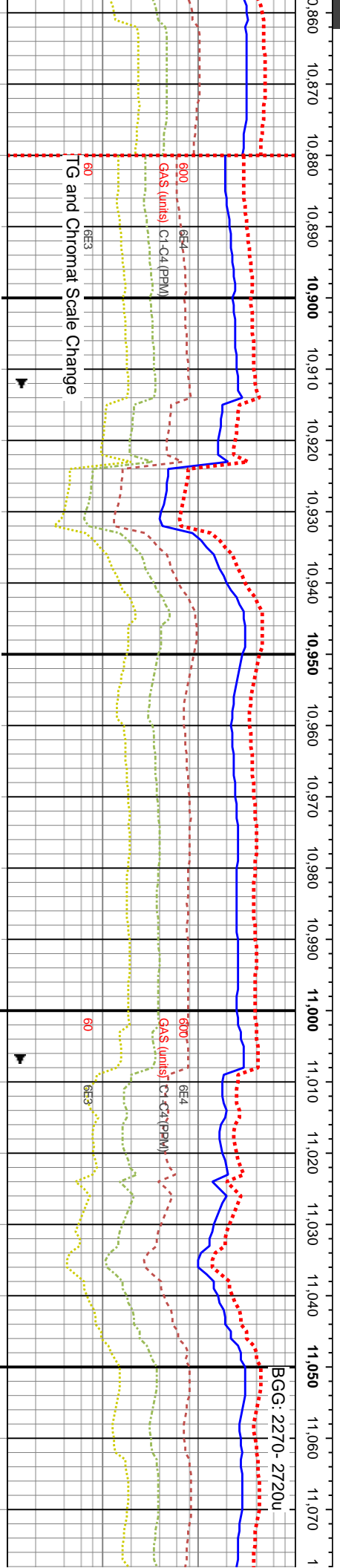
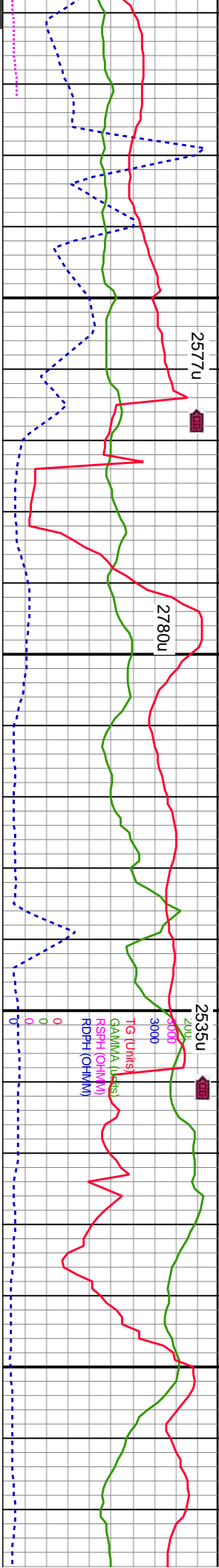
7100	WOB: 16.4 K ROT: 62 STKS: 56 SPM Pump Rate: 273 GPM	7100
------	--	------











gy- tr brn, frm- sl  
slstn, mrlly, mot, —  
r t gn min flor, tr t

10880-10940 SLTY SH: gy- dk gy- tr brn, frm- sl  
hd, pred blkly, pred mrlstn, ip v mrlly, v mot, abnt  
chk incl, wh chk, v calc, v carb, rr pyr, tr t gn min  
flor, tr t gn cut

10940-11000 SLTY SH: gy- dk gy- tr brn, frm- sl  
hd, pred blkly, pred mrlstn, ip v mrlly, v mot,  
abnt chk incl, wh chk, v calc, v carb, rr pyr, tr t  
gn min flor, tr t gn cut

68 11000-11060 SLTY SH: gy- dk gy- tr brn, frm- sl  
hd, pred blkly, pred mrlstn, ip v mrlly, v mot, abnt chk  
incl, wh chk, v calc, v carb, rr pyr, tr t gn min flor, tr t  
gn cut

MD: 10,927 '  
TVD: 7,020.14 '  
Inclination: 90.22 °  
Azimuth: 90.37 °  
VS: 4,915.7 '

MD: 11,021 '  
TVD: 7,020.21 '  
Inclination: 89.69 °  
Azimuth: 90.25 °  
VS: 5,008.41 '

DP @ 10,850'

WOB: 24.1 K  
ROT: 62  
STKS: 56 SPM  
Pump Rate: 274 GPM

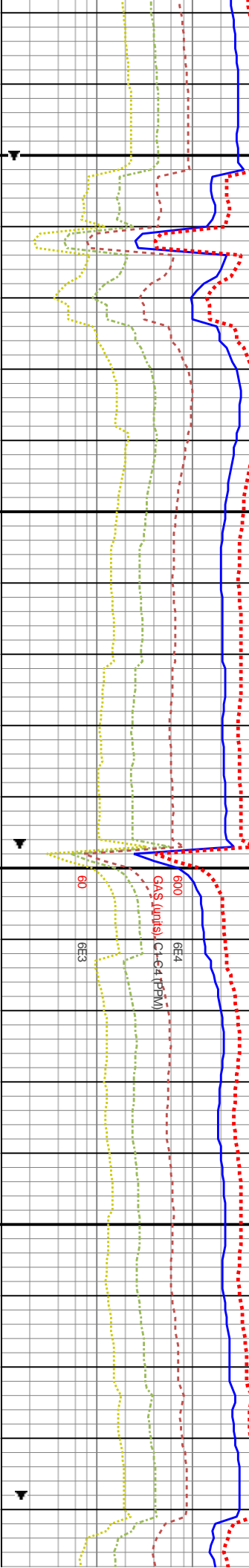
7100





BGG: 1750-2750u

BGG: 1590-2510u



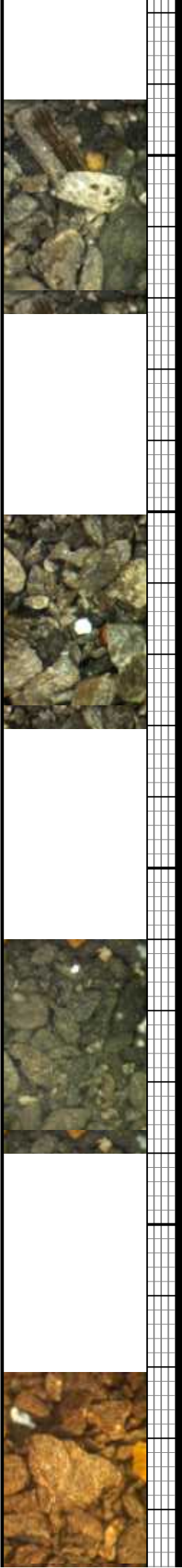
11060-11120 SLTY SH: gy- dk gy- tr frm- sl hd, pred blk, pred mlstn, v mly, v mot, abnt chk incl, wh chk, v alc, v carb, rr pyr, tr lt gn min flr, tr lt n cut	11120-11180 SLTY SH: gy- dk gy- tr bm, frm- sl hd, pred blk, pred mlstn, ip v mly, v mot, abnt chk incl, wh chk, v calc, v carb, rr pyr, tr lt gn min flr, tr lt gn cut	11180-11240 SLTY SH: gy- dk gy- tr bm, frm- sl hd, pred blk, pred mlstn, ip v mly, v mot, abnt chk incl, wh chk, v calc, v carb, rr pyr, tr lt gn min flr, tr lt gn cut	11240-11300 SLTY SH: gy- dk gy- tr bm, frm- sl hd, pred blk, pred mlstn, v mly, v mot, sme chk incl, occ wh chk, v calc, v carb, rr pyr, tr lt gn min flr, tr lt gn cut
--	--	--	--

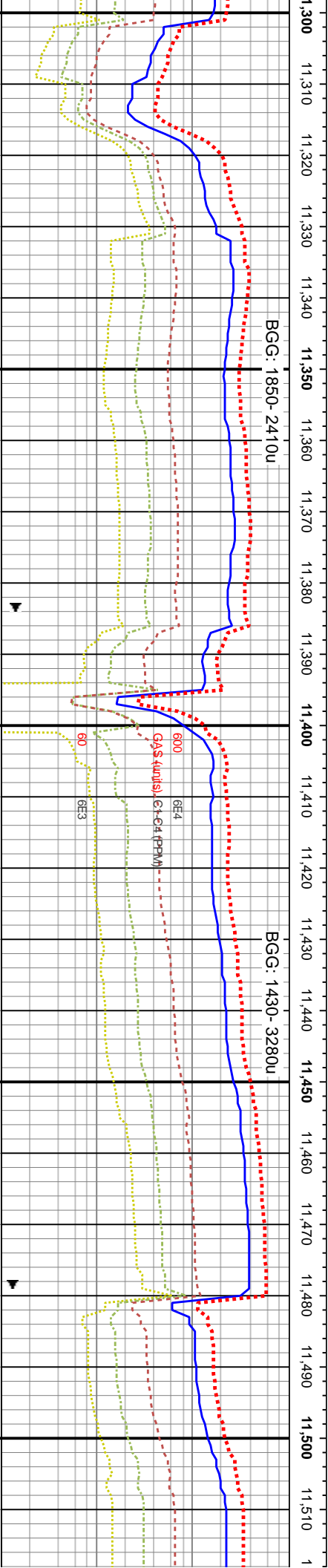
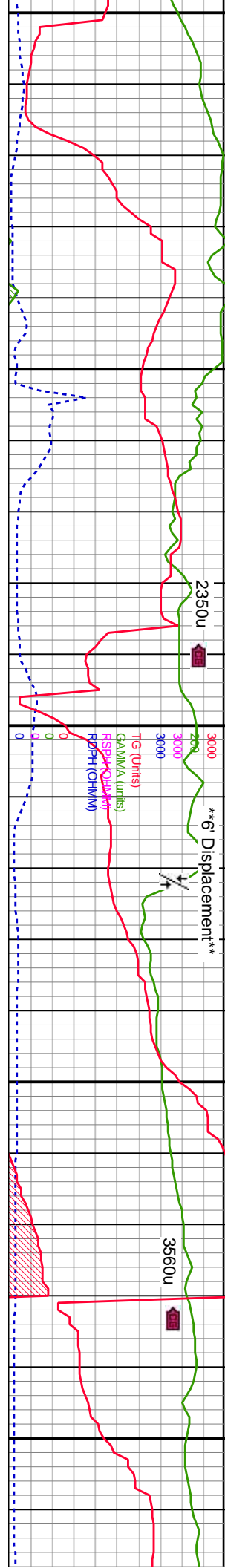
MD: 11,115 '  
TVD: 7,021.22 '  
Inclination: 89.08 °  
Azimuth: 89.78 °  
VS: 5,101.19 '

MD: 11,210 '  
TVD (ft): 7,022.75 '  
Inclination: 89.08 °  
Azimuth: 89.26 °  
VS: 5,195.08 '

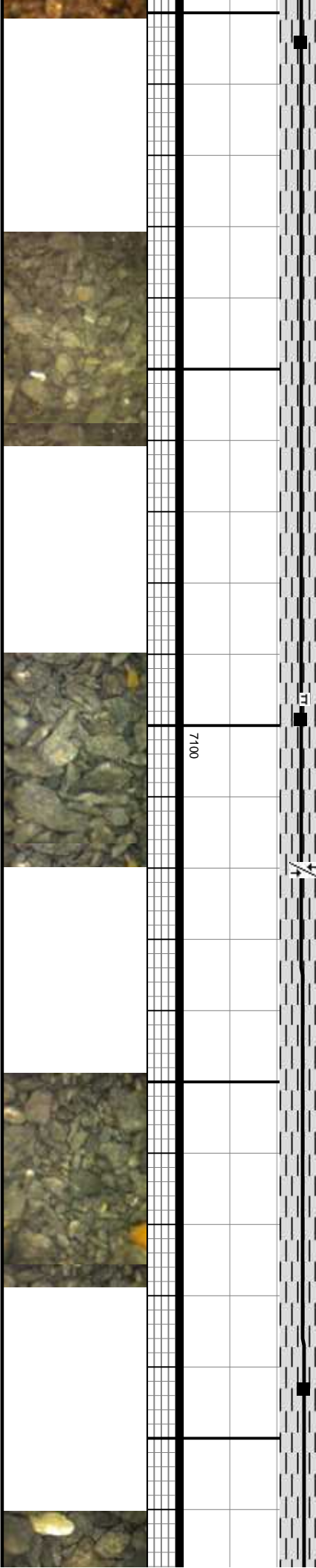
WOB: 21.9 K  
ROT: 67  
STKS: 57 SPM  
Pump Rate: 279 GPM

7100

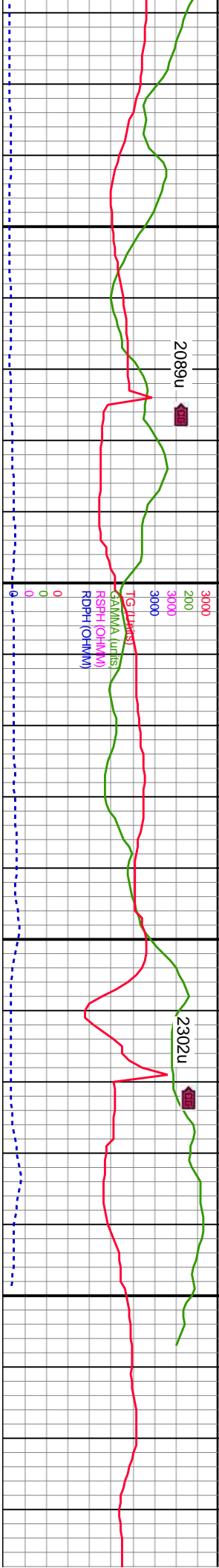




11300-11360 SLTY SH: gy- dk gy- tr brn, frm- sl hd, pred blkly, pred mrlstn, v mrlly, v mot, sme chk incl, occ wh chk, v calc, v carb, rr pyr, tr lt gn min flor, tr lt gn cut	11360-11420 SLTY SH: gy- dk gy- tr brn, frm- sl hd, pred blkly, pred mrlstn, v mrlly, v mot, sme chk incl, occ wh chk, v calc, v carb, rr pyr, tr lt gn min flor, tr lt gn cut	11420-11480 SLTY SH: gy- dk gy- tr brn, sme lt gy, frm- sl hd, pred blkly, pred mrlstn, v mrlly, v mot, sme chk incl, occ wh chk, v calc, v carb, rr pyr, tr lt gn min flor, tr lt gn cut	11480-11540 SLTY SH: sme lt gy, frm- sl hd, pr mrlstn, v mrlly, v mot, sme wh chk, v calc, v carb, flor, tr lt gn cut
MD: 11,304 ' TVD: 7,024.12 ' Inclination: 89.25 ° Azimuth: 88.84 ° VS: 5,288.1 '	WOB: 85 K ROT: 4 STKS: 58 SPM/ Pump Rate: 284 GPM MD: 11,399 ' TVD: 7,024.48 ' Inclination: 90.31 ° Azimuth: 88.53 ° VS: 5,382.2 '	MD: 11,493 ' TVD: 7,022.83 ' Inclination: 91.71 ° Azimuth: 87.82 ° VS: 5,475.4 '	





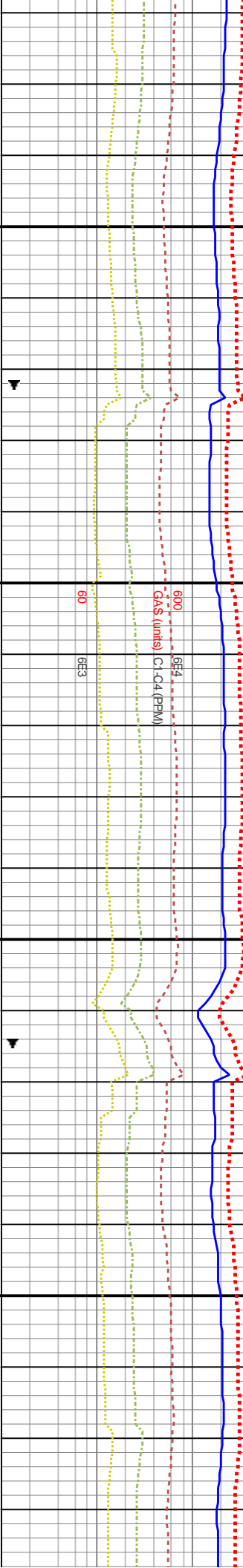


11,520 11,530 11,540 11,550 11,560 11,570 11,580 11,590 11,600 11,610 11,620 11,630 11,640 11,650 11,660 11,670 11,680 11,690 11,700 11,710 11,720 11,730 1

BGG: 1510- 2020u

BGG: 1750- 2010u

BGG: 1410- 1870u



11540-11600 SLTY SH: gy- dk gy- tr brn, sme lt gy, frm- sl hd, pred blkly, pred mrlstn, v mrlly, v mot, chk incl, wh chk, v carb, rr pyr, tr lt gn min flor, tr lt gn cut

11600-11660 SLTY SH: gy- dk gy- tr brn, sme lt gy, frm- sl hd, pred blkly, pred mrlstn, v mrlly, v mot, chk incl, wh chk, v carb, rr pyr, tr lt gn min flor, tr lt gn cut

11660-11720 SLTY SH: gy- dk gy- tr brn, sme lt gy, frm- sl hd, pred blkly, pred mrlstn, v mrlly, v mot, chk incl, wh chk, v carb, rr pyr, tr lt gn min flor, tr lt gn cut

11720-11740 S

MD: 11,587 '  
TVD: 7,021.1 '  
Inclination: 90.4 °  
Azimuth: 88.22 °  
VS: 5,568.64 '  
WOB: 27.1 K  
ROT: 65  
STKS: 53 SPM  
Pump Rate: 260 GPM

MD: 11,660 '  
TVD: 7,020.53 '  
Inclination: 90.48 °  
Azimuth: 88.23 °  
VS: 5,641.03 '

