

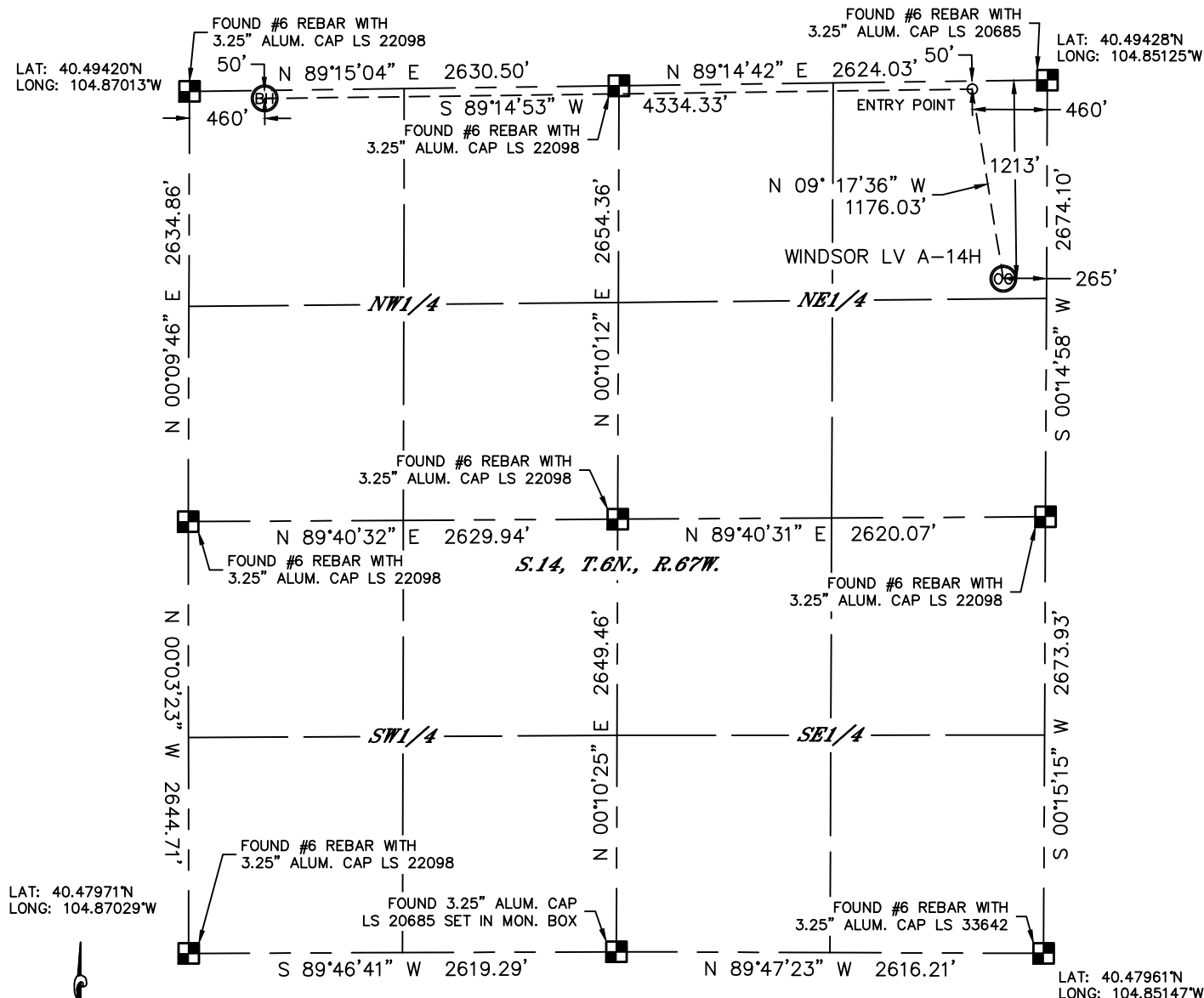


Lat40°, Inc. 1635 Foxtrail Drive, Suite 325 Loveland, CO 970-776-3321

WELL LOCATION CERTIFICATE

THIS MAP DOES NOT REPRESENT A BOUNDARY SURVEY

SECTION: 14
TOWNSHIP: 6N
RANGE: 67W



In accordance with a request from Jesse White with APOLLO OPERATING, LLC, Lat40°, Inc. has determined the surface location of the WINDSOR LV A-14H to be 1213' from the NORTH line and 265' from the EAST line and the bottom hole to be 50' from the NORTH line and 460' from the WEST line as measured at right angles from the section lines of Section 14, Township 6 North, Range 67 West of the Sixth Principal Meridian, County of Weld, State of Colorado.

I hereby state that this Well Location Certificate was prepared by me, or under my direct supervision, that the fieldwork was completed on 4/25/2013, for and on behalf of APOLLO OPERATING, LLC. That this is not a Land Survey Plat or an Improvement Survey Plat, and that it is not to be relied upon for establishment of fence, building, or other future improvement lines.

NOTE:

- 1) Bearings shown are Grid Bearings of the Colorado State Plane Coordinate System, North Zone, North American Datum 1983/2007. The lineal dimensions as contained herein are based upon the "U.S. Survey Foot."
 - 2) Ground elevations are based on an observed GPS elevation (NAVD 1988 DATUM).
 - 3) IMPROVEMENTS: See LOCATION DRAWING for all visible improvements within 500' of disturbed area.
 - 4) SURFACE USE: CROPLAND
 - 5) INSTRUMENT OPERATOR: WYATT HALL
 - 6) NEAREST EXISTING WELL: NONE IN QUARTER-SECTION
- NEAREST CULTURAL ITEMS:
BUILDING: 666' SE
BUILDING UNIT: 676' S
HIGH OCCUPANCY BUILDING UNIT: 1001'+
DESIGNATED OUTSIDE ACTIVITY AREA: 1001'+
PUBLIC ROAD: 254' E
ABOVE GROUND UTILITY: 289' E
RAILROAD: 5280'+
PROPERTY LINE: 265' E

SURFACE LOCATION

LAT: 40.49095°N
LONG: 104.85225°W
PDOP: 1.8
ELEV: 4845'
1/41/4: NE1/4NE1/4

ENTRY POINT

LAT: 40.49414°N
LONG: 104.85290°W

BOTTOM HOLE

LAT: 40.49407°N
LONG: 104.86848°W

LEGEND

- = ALIQUOT MONUMENT AS DESCRIBED
○ = CALCULATED POSITION

Brian T. Brinkman—On behalf of Lat40°, Inc.
Colorado Licensed Professional Land Surveyor No. 38175
DATE: 9/23/2013
PROJECT#: 2012076

