



## **Bayswater**

**Windsor**

**Windsor LV 14H**

**Windsor LV A-14H**

**Windsor LV A-14H**

**Plan: Windsor LV A-14H**

## **Standard Planning Report**

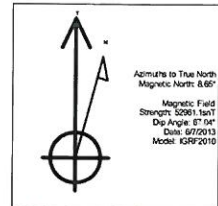
**09 July, 2013**

WELL DETAILS: Windsor LV A-141													
+N+ S			+E+ W			Northing			Ground Level: Easting		-4945.00	Longitude	Stat
0.00			0.00			1909500.740			3180229.343		40.409560		
SECTION DETAILS													
Sec	MD	Inc	Age	TVD	+N+ S	+E+ W	Diag	IFace	VSecl	Target	Annotation		
1	0.00	0.00	0.00	0.00	0.00	0.00	1.15	0.00	0.00				
2	197.50	0.00	0.00	197.50	0.00	0.00	0.00	0.00	0.00		Start Build 2.00		
3	1277.29	11.55	20.74	1273.29	-84.21	20.13	2.00	20.74	-4.16		Start 5316.13 hold at 1277.29 MD		
4	5293.41	11.55	20.74	6481.94	104.97	30.14	0.00	0.00	-126.11		Start DLS 10.00 TFO -110.56		
5	7040.00	90.60	209.17	7045.00	1110.17	-162.15	10.00	-110.56	-481.11	LV A-14H Landing	Start DLS 10.00 TFO 00.64		
6	11533.15	90.60	209.17	7040.00	1137.35	-4478.10	0.00	89.84	4820.17		TD at 11518.18		
DESIGN TARGET DETAILS													
Name	TVD	+N+ S	+E+ W	Northing	Easting	Latitude	Longitude	Shape					
LV A-14H Toe up End Pt	7040.00	1137.07	-4314.11	1969750.851	3175881.136	40.430270	-104.856060	Circle (Radius: 25.00)					
LV A-14H Landing	7045.00	1162.17	-1407.19	1969662.183	3180020.230	40.434140	-104.852920	Circle (Radius: 15.00)					
- plan this target center													

Company Name: Bayswater

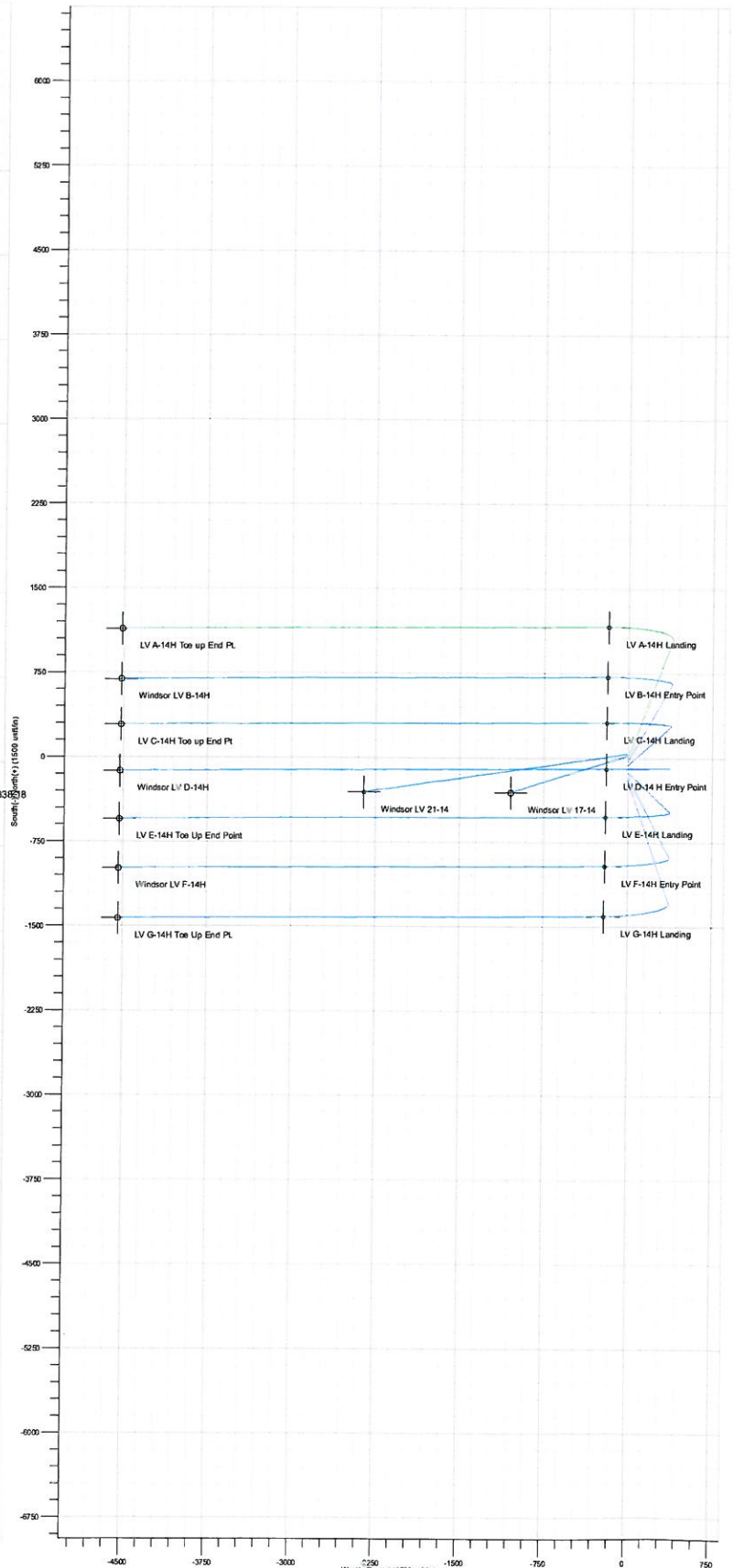
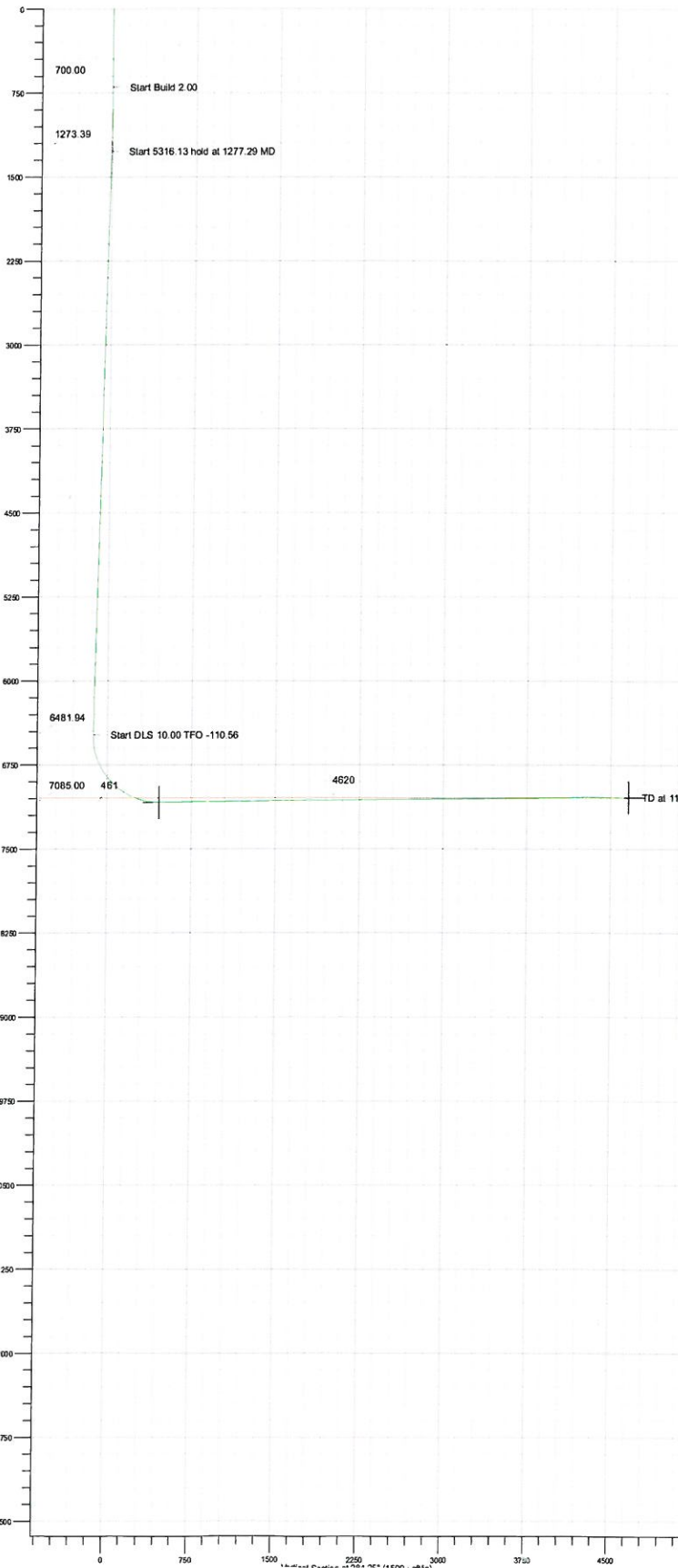
#### FORMATION TOP DETAILS

TVD/Fish	MD/Fish	Formation	DpAngle	DpDr
7045.00	7317.05	No Entry	0.00	



PROJECT DETAILS: Windsor

Geodetic System: US State Plane 1983  
Datum: North American Datum 1983  
Ellipsoid: GRS 1980  
Zone: Colorado Central Zone  
System Datum: Mean Sea Level



<b>Database:</b>	Compass DB	<b>Local Co-ordinate Reference:</b>	Well Windsor LV A-14H
<b>Company:</b>	Bayswater	<b>TVD Reference:</b>	WELL @ 4845.00usft (Original Well Elev)
<b>Project:</b>	Windsor	<b>MD Reference:</b>	WELL @ 4845.00usft (Original Well Elev)
<b>Site:</b>	Windsor LV 14H	<b>North Reference:</b>	True
<b>Well:</b>	Windsor LV A-14H	<b>Survey Calculation Method:</b>	Minimum Curvature
<b>Wellbore:</b>	Windsor LV A-14H		
<b>Design:</b>	Windsor LV A-14H		

<b>Project</b>	Windsor, Colorado		
<b>Map System:</b>	US State Plane 1983	<b>System Datum:</b>	Mean Sea Level
<b>Geo Datum:</b>	North American Datum 1983		
<b>Map Zone:</b>	Colorado Central Zone		Using geodetic scale factor

Site	Windsor LV 14H				
Site Position:		Northing:	1,968,660.741 usft	Latitude:	40.490950
From:	Lat/Long	Easting:	3,180,209.343 usft	Longitude:	-104.852250
Position Uncertainty:	0.00 usft	Slot Radius:	13-3/16 "	Grid Convergence:	0.41

Well	Windsor LV A-14H					
Well Position	+N/-S	0.00 usft	Northing:	1,968,660.741 usft	Latitude:	40.490950
	+E/-W	0.00 usft	Easting:	3,180,209.343 usft	Longitude:	-104.852250
Position Uncertainty		0.00 usft	Wellhead Elevation:	4,845.00 usft	Ground Level:	4,845.00 usft

<b>Wellbore</b>	Windsor LV A-14H				
<b>Magnetics</b>	<b>Model Name</b>	<b>Sample Date</b>	<b>Declination (°)</b>	<b>Dip Angle (°)</b>	<b>Field Strength (nT)</b>
	IGRF2010	6/7/2013	8.65	67.04	52,961

Design	Windsor LV A-14H				
Audit Notes:					
Version:	1	Phase:	PROTOTYPE	Tie On Depth:	0.00
Vertical Section:	Depth From (TVD)	+N/-S	+E/-W	Direction	
	(usft)	(usft)	(usft)	(°)	
	0.00	0.00	0.00	284.25	

<b>Plan Sections</b>										
Measured Depth (usft)	Inclination (°)	Azimuth (°)	Vertical Depth (usft)	+N/-S (usft)	+E/-W (usft)	Dogleg Rate (°/100usft)	Build Rate (°/100usft)	Turn Rate (°/100usft)	TFO (°)	Target
0.00	0.00	0.00	0.00	0.00	0.00	0.00	0.00	0.00	0.00	
700.00	0.00	0.00	700.00	0.00	0.00	0.00	0.00	0.00	0.00	
1,277.29	11.55	20.74	1,273.39	54.21	20.52	2.00	2.00	0.00	20.74	
6,593.41	11.55	20.74	6,481.94	1,049.32	397.24	0.00	0.00	0.00	0.00	
7,540.56	90.60	269.67	7,085.00	1,162.17	-180.79	10.00	8.35	-11.73	-110.56	LV A-14H Landing
11,838.18	90.60	269.67	7,040.00	1,137.35	-4,478.10	0.00	0.00	0.00	89.64	



<b>Database:</b>	Compass DB	<b>Local Co-ordinate Reference:</b>	Well Windsor LV A-14H
<b>Company:</b>	Bayswater	<b>TVD Reference:</b>	WELL @ 4845.00usft (Original Well Elev)
<b>Project:</b>	Windsor	<b>MD Reference:</b>	WELL @ 4845.00usft (Original Well Elev)
<b>Site:</b>	Windsor LV 14H	<b>North Reference:</b>	True
<b>Well:</b>	Windsor LV A-14H	<b>Survey Calculation Method:</b>	Minimum Curvature
<b>Wellbore:</b>	Windsor LV A-14H		
<b>Design:</b>	Windsor LV A-14H		

Planned Survey

Measured Depth (usft)	Inclination (°)	Azimuth (°)	Vertical Depth (usft)	+N/-S (usft)	+E/-W (usft)	Vertical Section (usft)	Dogleg Rate (°/100usft)	Build Rate (°/100usft)	Turn Rate (°/100usft)
0.00	0.00	0.00	0.00	0.00	0.00	0.00	0.00	0.00	0.00
100.00	0.00	0.00	100.00	0.00	0.00	0.00	0.00	0.00	0.00
200.00	0.00	0.00	200.00	0.00	0.00	0.00	0.00	0.00	0.00
300.00	0.00	0.00	300.00	0.00	0.00	0.00	0.00	0.00	0.00
400.00	0.00	0.00	400.00	0.00	0.00	0.00	0.00	0.00	0.00
500.00	0.00	0.00	500.00	0.00	0.00	0.00	0.00	0.00	0.00
600.00	0.00	0.00	600.00	0.00	0.00	0.00	0.00	0.00	0.00
700.00	0.00	0.00	700.00	0.00	0.00	0.00	0.00	0.00	0.00
<b>Start Build 2.00</b>									
800.00	2.00	20.74	799.98	1.63	0.62	-0.20	2.00	2.00	0.00
900.00	4.00	20.74	899.84	6.53	2.47	-0.79	2.00	2.00	0.00
1,000.00	6.00	20.74	999.45	14.68	5.56	-1.77	2.00	2.00	0.00
1,100.00	8.00	20.74	1,098.70	26.07	9.87	-3.15	2.00	2.00	0.00
1,200.00	10.00	20.74	1,197.47	40.70	15.41	-4.92	2.00	2.00	0.00
1,277.29	11.55	20.74	1,273.39	54.21	20.52	-6.55	2.00	2.00	0.00
<b>Start 5316.13 hold at 1277.29 MD</b>									
1,300.00	11.55	20.74	1,295.64	58.47	22.13	-7.06	0.00	0.00	0.00
1,400.00	11.55	20.74	1,393.62	77.18	29.22	-9.32	0.00	0.00	0.00
1,500.00	11.55	20.74	1,491.59	95.90	36.31	-11.58	0.00	0.00	0.00
1,600.00	11.55	20.74	1,589.57	114.62	43.39	-13.84	0.00	0.00	0.00
1,700.00	11.55	20.74	1,687.55	133.34	50.48	-16.10	0.00	0.00	0.00
1,800.00	11.55	20.74	1,785.52	152.06	57.56	-18.36	0.00	0.00	0.00
1,900.00	11.55	20.74	1,883.50	170.78	64.65	-20.62	0.00	0.00	0.00
2,000.00	11.55	20.74	1,981.48	189.50	71.74	-22.88	0.00	0.00	0.00
2,100.00	11.55	20.74	2,079.45	208.21	78.82	-25.14	0.00	0.00	0.00
2,200.00	11.55	20.74	2,177.43	226.93	85.91	-27.40	0.00	0.00	0.00
2,300.00	11.55	20.74	2,275.41	245.65	93.00	-29.66	0.00	0.00	0.00
2,400.00	11.55	20.74	2,373.38	264.37	100.08	-31.92	0.00	0.00	0.00
2,500.00	11.55	20.74	2,471.36	283.09	107.17	-34.18	0.00	0.00	0.00
2,600.00	11.55	20.74	2,569.34	301.81	114.26	-36.45	0.00	0.00	0.00
2,700.00	11.55	20.74	2,667.31	320.53	121.34	-38.71	0.00	0.00	0.00
2,800.00	11.55	20.74	2,765.29	339.24	128.43	-40.97	0.00	0.00	0.00
2,900.00	11.55	20.74	2,863.27	357.96	135.51	-43.23	0.00	0.00	0.00
3,000.00	11.55	20.74	2,961.24	376.68	142.60	-45.49	0.00	0.00	0.00
3,100.00	11.55	20.74	3,059.22	395.40	149.69	-47.75	0.00	0.00	0.00
3,200.00	11.55	20.74	3,157.20	414.12	156.77	-50.01	0.00	0.00	0.00
3,300.00	11.55	20.74	3,255.17	432.84	163.86	-52.27	0.00	0.00	0.00
3,400.00	11.55	20.74	3,353.15	451.56	170.95	-54.53	0.00	0.00	0.00
3,500.00	11.55	20.74	3,451.12	470.27	178.03	-56.79	0.00	0.00	0.00
3,600.00	11.55	20.74	3,549.10	488.99	185.12	-59.05	0.00	0.00	0.00
3,700.00	11.55	20.74	3,647.08	507.71	192.21	-61.31	0.00	0.00	0.00
3,800.00	11.55	20.74	3,745.05	526.43	199.29	-63.57	0.00	0.00	0.00
3,900.00	11.55	20.74	3,843.03	545.15	206.38	-65.83	0.00	0.00	0.00
4,000.00	11.55	20.74	3,941.01	563.87	213.46	-68.09	0.00	0.00	0.00
4,100.00	11.55	20.74	4,038.98	582.59	220.55	-70.35	0.00	0.00	0.00
4,200.00	11.55	20.74	4,136.96	601.30	227.64	-72.61	0.00	0.00	0.00
4,300.00	11.55	20.74	4,234.94	620.02	234.72	-74.87	0.00	0.00	0.00
4,400.00	11.55	20.74	4,332.91	638.74	241.81	-77.13	0.00	0.00	0.00
4,500.00	11.55	20.74	4,430.89	657.46	248.90	-79.39	0.00	0.00	0.00
4,600.00	11.55	20.74	4,528.87	676.18	255.98	-81.65	0.00	0.00	0.00
4,700.00	11.55	20.74	4,626.84	694.90	263.07	-83.91	0.00	0.00	0.00
4,800.00	11.55	20.74	4,724.82	713.62	270.15	-86.17	0.00	0.00	0.00
4,900.00	11.55	20.74	4,822.80	732.33	277.24	-88.43	0.00	0.00	0.00
5,000.00	11.55	20.74	4,920.77	751.05	284.33	-90.69	0.00	0.00	0.00

<b>Database:</b>	Compass DB	<b>Local Co-ordinate Reference:</b>	Well Windsor LV A-14H
<b>Company:</b>	Bayswater	<b>TVD Reference:</b>	WELL @ 4845.00usft (Original Well Elev)
<b>Project:</b>	Windsor	<b>MD Reference:</b>	WELL @ 4845.00usft (Original Well Elev)
<b>Site:</b>	Windsor LV 14H	<b>North Reference:</b>	True
<b>Well:</b>	Windsor LV A-14H	<b>Survey Calculation Method:</b>	Minimum Curvature
<b>Wellbore:</b>	Windsor LV A-14H		
<b>Design:</b>	Windsor LV A-14H		

Planned Survey

Measured Depth (usft)	Inclination (°)	Azimuth (°)	Vertical Depth (usft)	+N/-S (usft)	+E/-W (usft)	Vertical Section (usft)	Dogleg Rate (°/100usft)	Build Rate (°/100usft)	Turn Rate (°/100usft)
5,100.00	11.55	20.74	5,018.75	769.77	291.41	-92.96	0.00	0.00	0.00
5,200.00	11.55	20.74	5,116.73	788.49	298.50	-95.22	0.00	0.00	0.00
5,300.00	11.55	20.74	5,214.70	807.21	305.59	-97.48	0.00	0.00	0.00
5,400.00	11.55	20.74	5,312.68	825.93	312.67	-99.74	0.00	0.00	0.00
5,500.00	11.55	20.74	5,410.66	844.65	319.76	-102.00	0.00	0.00	0.00
5,600.00	11.55	20.74	5,508.63	863.36	326.85	-104.26	0.00	0.00	0.00
5,700.00	11.55	20.74	5,606.61	882.08	333.93	-106.52	0.00	0.00	0.00
5,800.00	11.55	20.74	5,704.58	900.80	341.02	-108.78	0.00	0.00	0.00
5,900.00	11.55	20.74	5,802.56	919.52	348.10	-111.04	0.00	0.00	0.00
6,000.00	11.55	20.74	5,900.54	938.24	355.19	-113.30	0.00	0.00	0.00
6,100.00	11.55	20.74	5,998.51	956.96	362.28	-115.56	0.00	0.00	0.00
6,200.00	11.55	20.74	6,096.49	975.68	369.36	-117.82	0.00	0.00	0.00
6,300.00	11.55	20.74	6,194.47	994.39	376.45	-120.08	0.00	0.00	0.00
6,400.00	11.55	20.74	6,292.44	1,013.11	383.54	-122.34	0.00	0.00	0.00
6,500.00	11.55	20.74	6,390.42	1,031.83	390.62	-124.60	0.00	0.00	0.00
6,593.41	11.55	20.74	6,481.94	1,049.32	397.24	-126.71	0.00	0.00	0.00
<b>Start DLS 10.00 TFO -110.56</b>									
6,600.00	11.33	17.59	6,488.40	1,050.55	397.67	-126.82	10.00	-3.26	-47.68
6,700.00	12.61	328.27	6,586.47	1,069.25	394.89	-119.53	10.00	1.28	-49.33
6,800.00	19.68	302.01	6,682.58	1,087.51	374.82	-95.58	10.00	7.07	-26.26
6,900.00	28.52	290.34	6,773.83	1,104.78	338.06	-55.70	10.00	8.84	-11.67
7,000.00	37.90	283.97	6,857.42	1,120.53	285.73	-1.11	10.00	9.38	-6.37
7,100.00	47.51	279.85	6,930.84	1,134.28	219.43	66.54	10.00	9.61	-4.12
7,200.00	57.22	276.84	6,991.84	1,145.62	141.17	145.19	10.00	9.71	-3.01
7,300.00	66.99	274.43	7,038.57	1,154.20	53.32	232.45	10.00	9.77	-2.41
7,317.05	68.66	274.06	7,045.00	1,155.37	37.57	247.99	10.00	9.79	-2.19
<b>Nio Entry</b>									
7,400.00	76.80	272.35	7,069.61	1,159.77	-41.44	325.66	10.00	9.81	-2.06
7,500.00	86.62	270.43	7,084.01	1,162.14	-140.24	422.01	10.00	9.82	-1.92
7,540.56	90.60	269.67	7,085.00	1,162.17	-180.79	461.31	10.00	9.82	-1.88
<b>Start DLS 0.00 TFO 89.64 - LV A-14H Landing</b>									
7,600.00	90.60	269.67	7,084.38	1,161.83	-240.22	518.83	0.00	0.00	0.00
7,700.00	90.60	269.67	7,083.33	1,161.25	-340.21	615.60	0.00	0.00	0.00
7,800.00	90.60	269.67	7,082.28	1,160.67	-440.20	712.38	0.00	0.00	0.00
7,900.00	90.60	269.67	7,081.24	1,160.09	-540.20	809.15	0.00	0.00	0.00
8,000.00	90.60	269.67	7,080.19	1,159.51	-640.19	905.92	0.00	0.00	0.00
8,100.00	90.60	269.67	7,079.14	1,158.93	-740.18	1,002.70	0.00	0.00	0.00
8,200.00	90.60	269.67	7,078.09	1,158.36	-840.18	1,099.47	0.00	0.00	0.00
8,300.00	90.60	269.67	7,077.05	1,157.78	-940.17	1,196.24	0.00	0.00	0.00
8,400.00	90.60	269.67	7,076.00	1,157.20	-1,040.16	1,293.02	0.00	0.00	0.00
8,500.00	90.60	269.67	7,074.95	1,156.62	-1,140.15	1,389.79	0.00	0.00	0.00
8,600.00	90.60	269.67	7,073.91	1,156.04	-1,240.15	1,486.56	0.00	0.00	0.00
8,700.00	90.60	269.67	7,072.86	1,155.46	-1,340.14	1,583.34	0.00	0.00	0.00
8,800.00	90.60	269.67	7,071.81	1,154.88	-1,440.13	1,680.11	0.00	0.00	0.00
8,900.00	90.60	269.67	7,070.76	1,154.31	-1,540.13	1,776.88	0.00	0.00	0.00
9,000.00	90.60	269.67	7,069.72	1,153.73	-1,640.12	1,873.66	0.00	0.00	0.00
9,100.00	90.60	269.67	7,068.67	1,153.15	-1,740.11	1,970.43	0.00	0.00	0.00
9,200.00	90.60	269.67	7,067.62	1,152.57	-1,840.10	2,067.20	0.00	0.00	0.00
9,300.00	90.60	269.67	7,066.58	1,151.99	-1,940.10	2,163.98	0.00	0.00	0.00
9,400.00	90.60	269.67	7,065.53	1,151.42	-2,040.09	2,260.75	0.00	0.00	0.00
9,500.00	90.60	269.67	7,064.48	1,150.84	-2,140.08	2,357.52	0.00	0.00	0.00
9,600.00	90.60	269.67	7,063.43	1,150.26	-2,240.08	2,454.30	0.00	0.00	0.00
9,700.00	90.60	269.67	7,062.39	1,149.68	-2,340.07	2,551.07	0.00	0.00	0.00



<b>Database:</b>	Compass DB	<b>Local Co-ordinate Reference:</b>	Well Windsor LV A-14H
<b>Company:</b>	Bayswater	<b>TVD Reference:</b>	WELL @ 4845.00usft (Original Well Elev)
<b>Project:</b>	Windsor	<b>MD Reference:</b>	WELL @ 4845.00usft (Original Well Elev)
<b>Site:</b>	Windsor LV 14H	<b>North Reference:</b>	True
<b>Well:</b>	Windsor LV A-14H	<b>Survey Calculation Method:</b>	Minimum Curvature
<b>Wellbore:</b>	Windsor LV A-14H		
<b>Design:</b>	Windsor LV A-14H		

**Planned Survey**

Measured Depth (usft)	Inclination (°)	Azimuth (°)	Vertical Depth (usft)	+N/-S (usft)	+E/-W (usft)	Vertical Section (usft)	Dogleg Rate (°/100usft)	Build Rate (°/100usft)	Turn Rate (°/100usft)
9,800.00	90.60	269.67	7,061.34	1,149.11	-2,440.06	2,647.85	0.00	0.00	0.00
9,900.00	90.60	269.67	7,060.29	1,148.53	-2,540.05	2,744.62	0.00	0.00	0.00
10,000.00	90.60	269.67	7,059.25	1,147.95	-2,640.05	2,841.39	0.00	0.00	0.00
10,100.00	90.60	269.67	7,058.20	1,147.37	-2,740.04	2,938.17	0.00	0.00	0.00
10,200.00	90.60	269.67	7,057.15	1,146.80	-2,840.03	3,034.94	0.00	0.00	0.00
10,300.00	90.60	269.67	7,056.10	1,146.22	-2,940.03	3,131.71	0.00	0.00	0.00
10,400.00	90.60	269.67	7,055.06	1,145.64	-3,040.02	3,228.49	0.00	0.00	0.00
10,500.00	90.60	269.67	7,054.01	1,145.07	-3,140.01	3,325.26	0.00	0.00	0.00
10,600.00	90.60	269.67	7,052.96	1,144.49	-3,240.00	3,422.04	0.00	0.00	0.00
10,700.00	90.60	269.67	7,051.92	1,143.91	-3,340.00	3,518.81	0.00	0.00	0.00
10,800.00	90.60	269.67	7,050.87	1,143.34	-3,439.99	3,615.58	0.00	0.00	0.00
10,900.00	90.60	269.67	7,049.82	1,142.76	-3,539.98	3,712.36	0.00	0.00	0.00
11,000.00	90.60	269.67	7,048.77	1,142.18	-3,639.98	3,809.13	0.00	0.00	0.00
11,100.00	90.60	269.67	7,047.73	1,141.61	-3,739.97	3,905.91	0.00	0.00	0.00
11,200.00	90.60	269.67	7,046.68	1,141.03	-3,839.96	4,002.68	0.00	0.00	0.00
11,300.00	90.60	269.67	7,045.63	1,140.45	-3,939.95	4,099.45	0.00	0.00	0.00
11,400.00	90.60	269.67	7,044.59	1,139.88	-4,039.95	4,196.23	0.00	0.00	0.00
11,500.00	90.60	269.67	7,043.54	1,139.30	-4,139.94	4,293.00	0.00	0.00	0.00
11,600.00	90.60	269.67	7,042.49	1,138.72	-4,239.93	4,389.78	0.00	0.00	0.00
11,700.00	90.60	269.67	7,041.44	1,138.15	-4,339.93	4,486.55	0.00	0.00	0.00
11,800.00	90.60	269.67	7,040.40	1,137.57	-4,439.92	4,583.32	0.00	0.00	0.00
11,838.18	90.60	269.67	7,040.00	1,137.35	-4,478.10	4,620.27	0.00	0.00	0.00
TD at 11838.18 - Toe up End Pt.									

**Design Targets**

Target Name	Dip Angle (°)	Dip Dir. (°)	TVD (usft)	+N/-S (usft)	+E/-W (usft)	Northing (usft)	Easting (usft)	Latitude	Longitude
- hit/miss target									
- Shape									
Toe up End Pt.	0.00	0.00	7,040.00	1,137.07	-4,514.11	1,969,765.855	3,175,686.195	40.494070	-104.868480
- plan misses target center by 36.02usft at 11838.18usft MD (7040.00 TVD, 1137.35 N, -4478.10 E)									
- Circle (radius 25.00)									
LV A-14H Landing	0.00	0.00	7,085.00	1,162.17	-180.79	1,969,821.864	3,180,020.230	40.494140	-104.852900
- plan hits target center									
- Circle (radius 15.00)									

**Formations**

Measured Depth (usft)	Vertical Depth (usft)	Name	Lithology	Dip (°)	Dip Direction (°)
7,317.05	7,045.00	Nio Entry		0.00	

<b>Database:</b>	Compass DB	<b>Local Co-ordinate Reference:</b>	Well Windsor LV A-14H
<b>Company:</b>	Bayswater	<b>TVD Reference:</b>	WELL @ 4845.00usft (Original Well Elev)
<b>Project:</b>	Windsor	<b>MD Reference:</b>	WELL @ 4845.00usft (Original Well Elev)
<b>Site:</b>	Windsor LV 14H	<b>North Reference:</b>	True
<b>Well:</b>	Windsor LV A-14H	<b>Survey Calculation Method:</b>	Minimum Curvature
<b>Wellbore:</b>	Windsor LV A-14H		
<b>Design:</b>	Windsor LV A-14H		

Plan Annotations				
Measured Depth (usft)	Vertical Depth (usft)	Local Coordinates		Comment
		+N/-S (usft)	+E/-W (usft)	
700.00	700.00	0.00	0.00	Start Build 2.00
1,277.29	1,273.39	54.21	20.52	Start 5316.13 hold at 1277.29 MD
6,593.41	6,481.94	1,049.32	397.24	Start DLS 10.00 TFO -110.56
7,540.56	7,085.00	1,162.17	-180.78	Start DLS 0.00 TFO 89.64
11,838.18	7,040.00	1,137.35	-4,478.10	TD at 11838.18