

Federal RGU 411-26-198

T. 1 S.

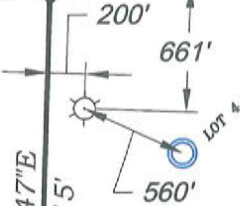
1939 GLO Brass Cap
Lat.: 39.941915
Long.: -108.369500

N87°52'38"W 2540.71'

N87°54'22"W

1939 GLO Brass Cap
Lat.: 39.941877
Long.: -108.360439

1939 GLO Brass Cap
Lat.: 39.941841
Long.: -108.351397



N01°40'47"E

2676.15'

LOT 5

LOT 3

LOT 2

LOT 1

BOTTOM HOLE LOCATION

876 FNL, 716 FWL

Lat.: 39.939501°

Long.: -108.366941°

N.: 1779784.1 (COSP)

E.: 2196179.7 (COSP)

2670.01'

N01°29'07"E

1939 GLO Brass Cap
Lat.: 39.934569
Long.: -108.369478

LOT 6

LOT 7

LOT 8

26

SURFACE HOLE LOCATION

661 FNL, 200 FWL

Lat.: 39.940096°

Long.: -108.368783°

N.: 1780017.3 (COSP)

E.: 2195670.3 (COSP)

1939 GLO Brass Cap
Lat.: 39.934512
Long.: -108.351345

LOT 10

LOT 9

PROPOSED PAD ELEV.: 6585.8
EXIST. GROUND ELEV.: 6590.3

(BASIS OF BEARING)
N01°41'31"E

2671.53'

LOT 12

LOT 11

LOT 13

LOT 14

LOT 15

LOT 16

1939 GLO Brass Cap
Lat.: 39.927236
Long.: -108.369458

2531.98'

N 87°58'10" W

1939 GLO Brass Cap
Lat.: 39.927208
Long.: -108.360431

2558.57'

N 88°00'44" W

1939 GLO Brass Cap
Lat.: 39.927186
Long.: -108.351309

R. 98 W.

N01°34'41"E

2668.99'

THERE ARE NO VISIBLE
IMPROVEMENTS WITHIN 400'
OF THIS LOCATION

SURVEYORS STATEMENT

I, MICHAEL J. LANGHORNE, A REGISTERED LAND SURVEYOR IN THE STATE OF COLORADO DO HEREBY CERTIFY THAT THE SURVEY SHOWN HEREON WAS PREPARED UNDER MY DIRECT SUPERVISION AND HAS BEEN STAKED ON THE GROUND AS SHOWN ON THE PLAT AND CHECKING THAT THIS MAP IS A TRUE REPRESENTATION THEREOF.

Michael J. Langhorne
36572

MICHAEL J. LANGHORNE, COLORADO REGISTRATION NO. 36572
FOR AND ON BEHALF OF
BOOKCLIFF SURVEY SERVICES, INC.

REFERENCES

- 1) DEPENDENT RESURVEY and Subdivision of Certain Sections T. 1 S., R. 98 W., 6 th P.M (BLM PLAT)
- 2) U.S.G.S. QUAD: Square S Ranch, CO

136 East Third Street
Rifle, Colorado
81650 Ph. (970)
625-2720 Fax (970)
625-2773

BOOKCLIFF
Survey Services, Inc.

SURVEY DATE: 2/14/13
MAP DATE: 7/25/13
SCALE: 1" = 1000'
PLAT: 1 of 1
PROJECT: Highlands

- LEGEND -

FIELD LOCATED SECTION
MONUMENTS AS DESCRIBED



FIELD SURVEYED
WELL LOCATION



CALCULATED BOTTOM
HOLE LOCATION



CALCULATED SECTION
CORNER LOCATION



NOTES

- 1) ELEVATIONS BASED ON N.A.V.D. 1988 PUBLISHED COORDINATES.
- 2) LATITUDES AND LONGITUDES ARE BASE ON NAD 83, PUBLISHED COORDINATES.
- 3) STATE PLANE COORDINATES ARE BASED ON COLORADO CENTRAL ZONE, U.S. SURVEY FEET.
- 4) ELEVATION MASK SET TO 15"
- 5) GPS OPERATOR J. KIRKPATRICK, OBSERVED A PDOP OF 2.7 FOR SURVEY POINT NUMBER 323.
- 6) SURFACE AND BOTTOM HOLE LOCATIONS ARE MEASURED 90° FROM SECTION LINES.

WELL LOCATION PLAT Prepared for:
WPXENERGY

WPX Energy Rocky Mountain, LLC

NW1/4 NW1/4, SECTION 26
T. 1 S., R. 98 W. of the 6th. P.M.
Rio BLANCO COUNTY, COLORADO

0 500 1000
GRAPHIC SCALE IN FEET
1 INCH = 1000 FEET

