

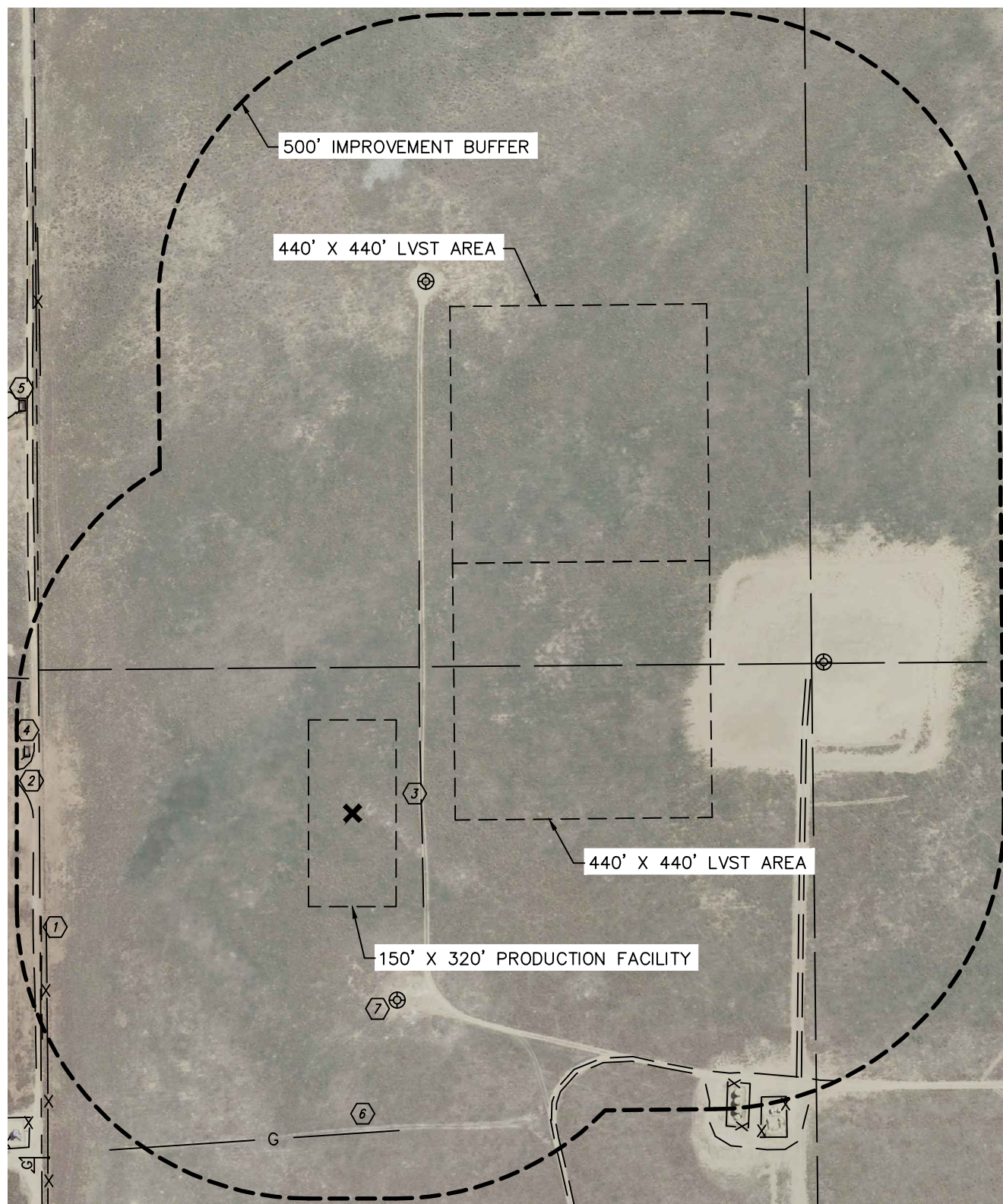


Lat40°, Inc. 1635 Foxtrail Drive, Suite 325 Loveland, CO 970-776-3321

PRODUCTION FACILITY LOCATION DRAWING

BECKER RANCH 5MR-TB PAD

SECTION: 5
TOWNSHIP: 3N
RANGE: 64W



LEGEND

X - REFERENCE POINT
ALL DISTANCES ARE APPROXIMATE.

SHEET 1 OF 2 DATE: rev.11/08/2013
PROJECT#: 2013107



Lat40°, Inc. 1635 Foxtrail Drive, Suite 325 Loveland, CO 970-776-3321

PRODUCTION FACILITY LOCATION DRAWING

BECKER RANCH 5MR-TB PAD

SECTION: 5
TOWNSHIP: 3N
RANGE: 64W

IMPROVEMENTS:

- ① FENCE 527' N
- ② PUBLIC ROAD 535' N (COUNTY ROAD 38)
- ③ FIELD ROAD 118' S, 580' SW, 767' S
- ④ CONCRETE 562' NE
- ⑤ CONCRETE WALL 570' NE
- ⑥ GAS LINE 548' W
- ⑦ EX. WELL HEAD 329' SW, 848' & 920' SE

REFERENCE POINT LOCATION:

LAT: 40.26028°N

LONG: 104.57098°W

ELEV: 4782'

PDOP: 1.8

DATE: 7/18/2013

OPERATOR: ADAM KELLY

1/41/4: NW1/4NE1/4

FNL: 536'

FEL: 1567'

DISTANCE TO WELL: 409'

ASSOCIATED NEW WELLS:

BECKER RANCH 5M-403

BECKER RANCH 5M-323

BECKER RANCH 5R-443

BECKER RANCH 5R-203

ASSOCIATED EXISTING WELLS:

N/A

NEAREST: BUILDING 1174' NE,
BUILDING UNIT 2020' NW,
HIGH OCCUPANCY BUILDING UNIT 5280'+,
DESIGNATED OUTSIDE ACTIVITY AREA 5280'+,
PUBLIC ROAD 535' N (COUNTY ROAD 38)
ABOVE GROUND UTILITY 1249' NE,
RAILROAD 5280'+,
PROPERTY LINE 536' N

LEGEND

X - REFERENCE POINT
ALL DISTANCES ARE APPROXIMATE.

SHEET 2 OF 2

DATE: rev.11/08/2013
PROJECT#: 2013107