

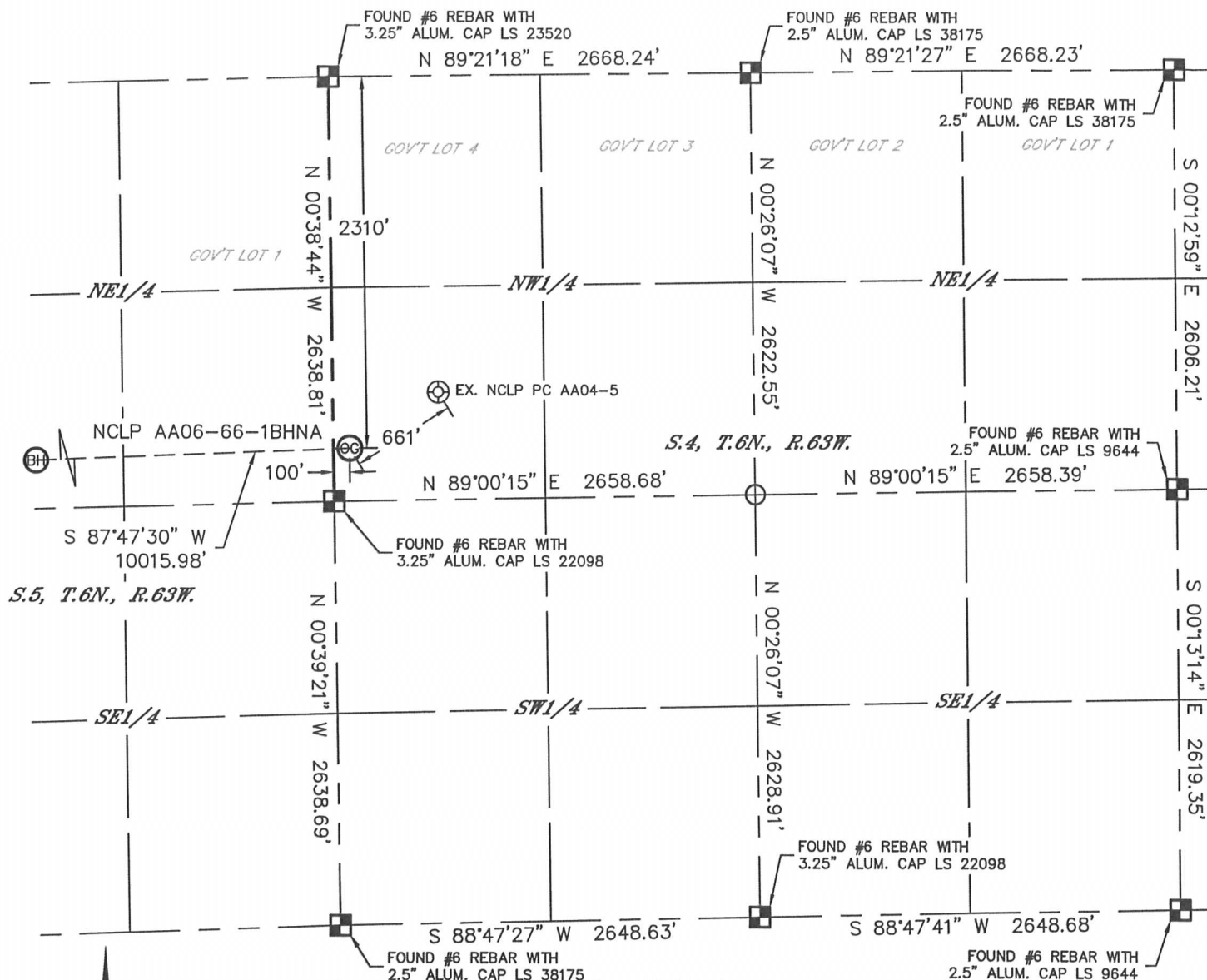


Lat40°, Inc. 1635 Foxtrail Drive, Suite 325 Loveland, CO 970-776-3321

WELL LOCATION CERTIFICATE

THIS MAP DOES NOT REPRESENT A BOUNDARY SURVEY

SECTION: 4
TOWNSHIP: 6N
RANGE: 63W



In accordance with a request from Greg Wilson with Noble Energy Inc. Lat40°, Inc. has determined the surface location of the NCLP AA06-66-1BHNA to be 2310' from the NORTH line and 100' from the WEST line as measured at right angles from the section lines of Section 4, Township 6 North, Range 63 West and the bottom hole to be 2475' from the NORTH line and 535' from the WEST line as measured at right angles from the section lines of Section 6, Township 6 North, Range 63 West of the Sixth Principal Meridian, County of Weld, State of Colorado.

I hereby state that this Well Location Certificate was prepared by me, or under my direct supervision, that the fieldwork was completed on 7/11/2013, for and on behalf of Noble Energy Inc. That this is not a Land Survey Plat or an Improvement Survey Plat, and that it is not to be relied upon for establishment of fence, building, or other future improvement lines.

NOTE:

- 1) Bearings shown are Grid Bearings of the Colorado State Plane Coordinate System, North Zone, North American Datum 1983/2007. The lineal dimensions as contained herein are based upon the "U.S. Survey Foot."
 - 2) Ground elevations are based on an observed GPS elevation (NAVD 1988 DATUM).
 - 3) IMPROVEMENTS: See LOCATION DRAWING for all visible improvements within 500' of disturbed area.
 - 4) SURFACE USE: RANGELAND/PASTURE
 - 5) INSTRUMENT OPERATOR: ADAM KELLY
 - 6) NEAREST EXISTING WELL: NCLP PC AA04-5, 661'
- NEAREST CULTURAL ITEMS:
BUILDING: ±2910' NW
BUILDING UNIT: ±2910' NW
HIGH OCCUPANCY BUILDING UNIT: 1001'+
DESIGNATED OUTSIDE ACTIVITY AREA: 1001'+
PUBLIC ROAD: COUNTY ROAD 74, 2302' N
ABOVEGROUND UTILITY: 2278' N
RAILROAD: 5280'+
PROPERTY LINE: 328' S

SURFACE LOCATION

LAT: 40.51666°N
LONG: 104.45086°W
PDOP: 1.4
ELEV: 4710'
1/4, 1/4: SW1/4NW1/4

BOTTOM HOLE

LAT: 40.51592°N
LONG: 104.48686°W

LEGEND

- = ALIQUOT MONUMENT AS DESCRIBED
○ = CALCULATED POSITION

SHEET 1 OF 3

Brian T. Brinkman—On behalf of Lat40°, Inc.
Colorado Licensed Professional
Land Surveyor No. 38175

DATE: 10/31/2013
PROJECT#: 2013042



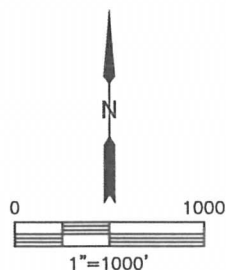
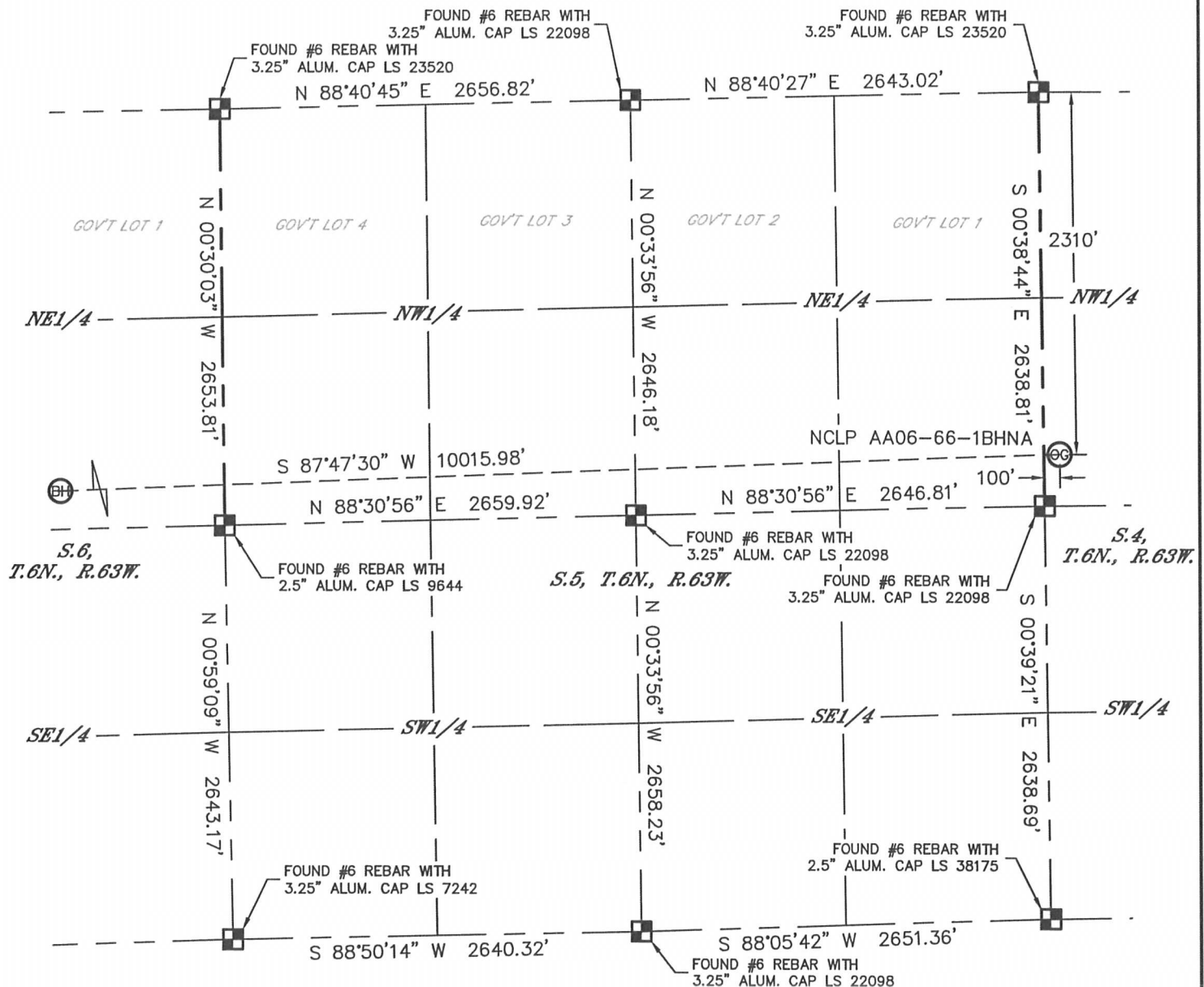


Lat40°, Inc. 1635 Foxtrail Drive, Suite 325 Loveland, CO 970-776-3321

WELL LOCATION CERTIFICATE

THIS MAP DOES NOT REPRESENT A BOUNDARY SURVEY

SECTION: 4
TOWNSHIP: 6N
RANGE: 63W



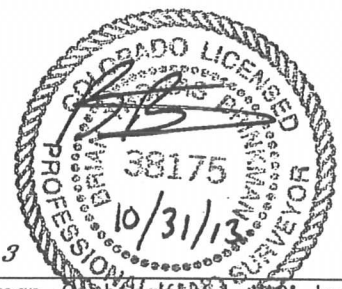
LEGEND

- = ALIQUOT MONUMENT AS DESCRIBED
- = CALCULATED POSITION

SHEET 2 OF 3

Brian T. Brinkman—On behalf of Lat40°, Inc.
Colorado Licensed Professional
Land Surveyor No. 38175

DATE: 10/31/2013
PROJECT#: 2013042



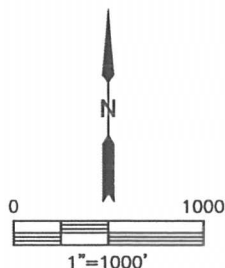
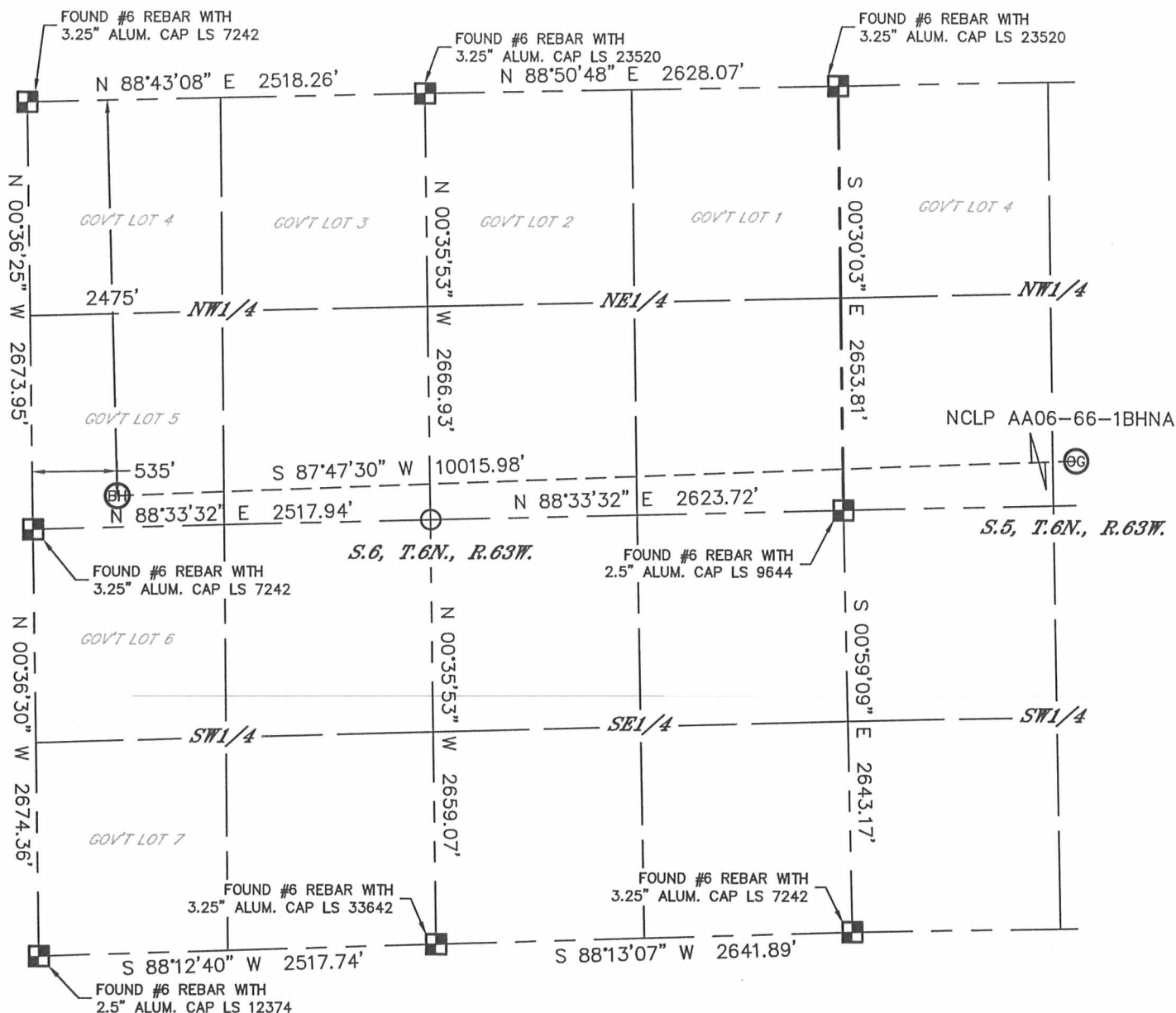


Lat40°, Inc. 1635 Foxtrail Drive, Suite 325 Loveland, CO 970-776-3321

WELL LOCATION CERTIFICATE

THIS MAP DOES NOT REPRESENT A BOUNDARY SURVEY

SECTION: 4
TOWNSHIP: 6N
RANGE: 63W



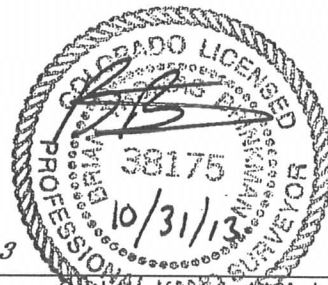
LEGEND

- = ALIQUOT MONUMENT AS DESCRIBED
- = CALCULATED POSITION

SHEET 3 OF 3

Brian T. Brinkman - On behalf of Lat40°, Inc.
Colorado Licensed Professional
Land Surveyor No. 38175

DATE: 10/31/2013
PROJECT#: 2013042



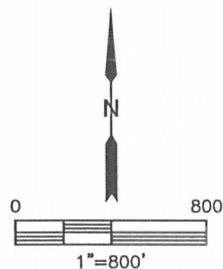
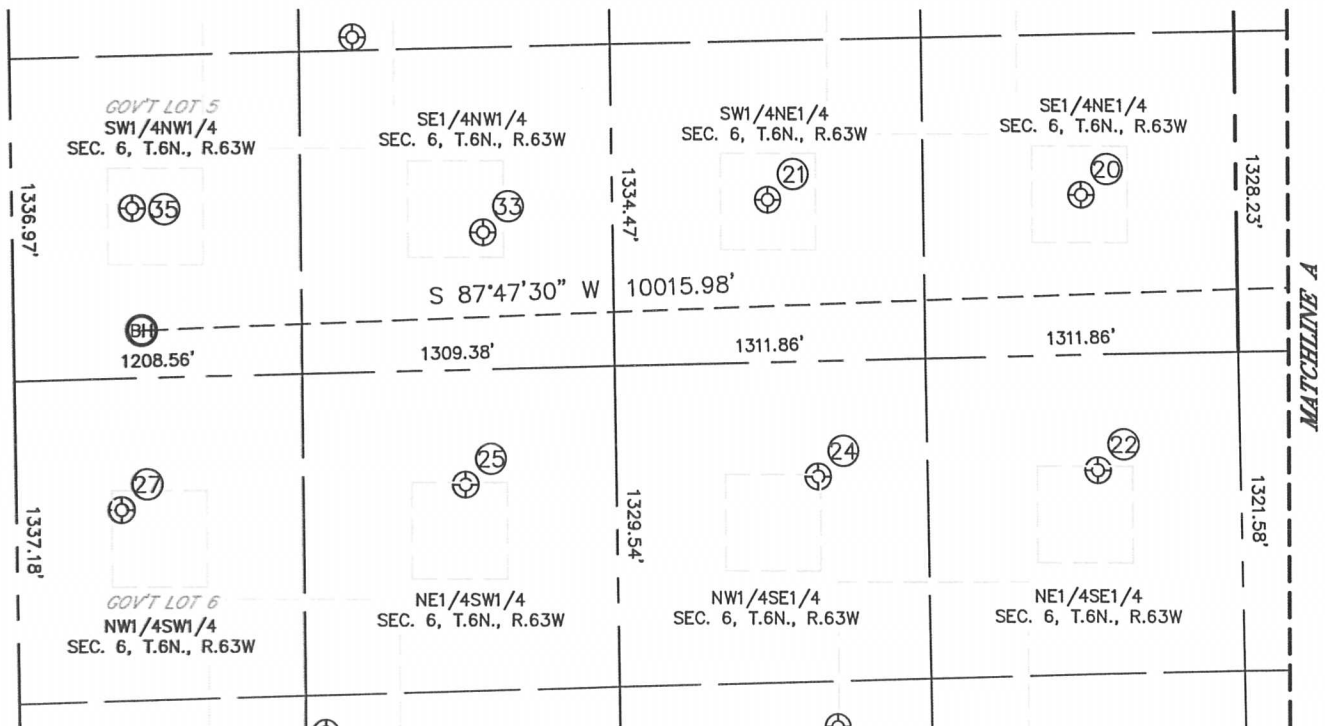
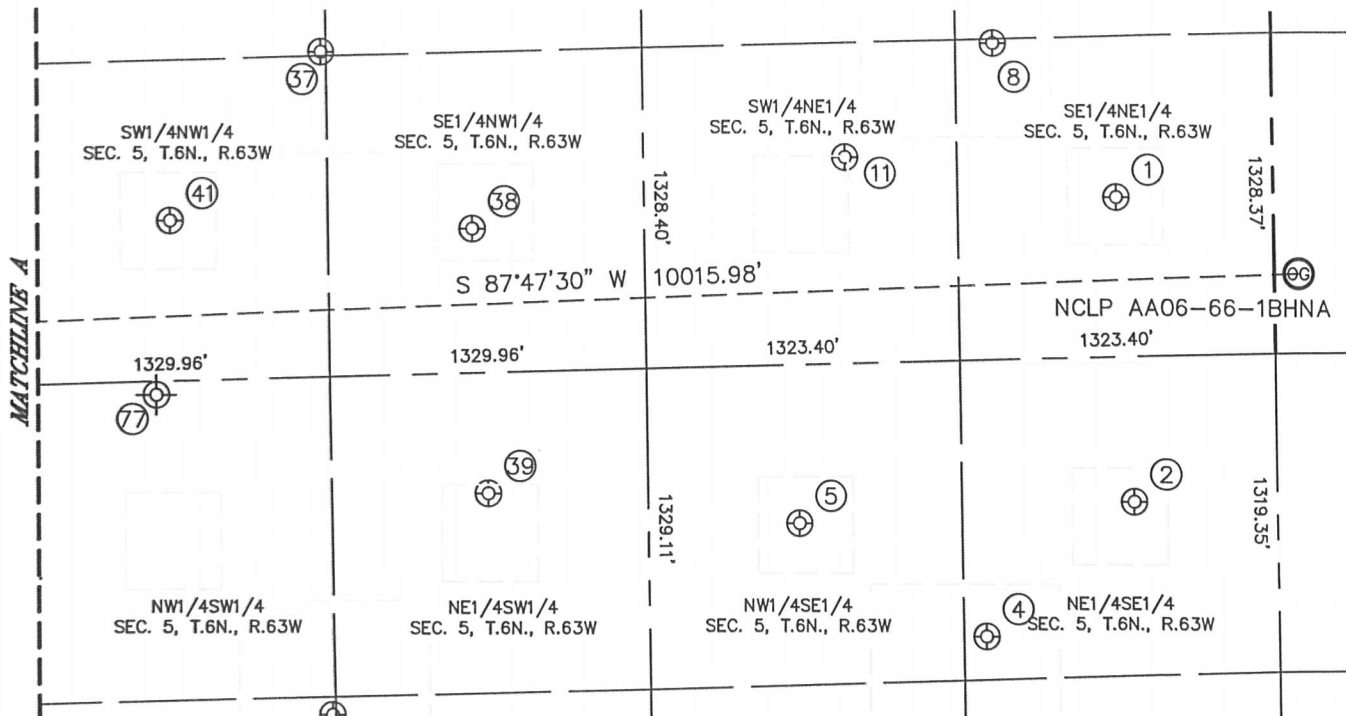


Lat40°, Inc. 1635 Foxtrail Drive, Suite 325 Loveland, CO 970-776-3321

SITE SKETCH

NCLP AA06-66-1BHNA

SECTION: 4
TOWNSHIP: 6N
RANGE: 63W



SHEET 1 OF 2

DATE: 10/31/2013
PROJECT#: 2013042



Lat40°, Inc. 1635 Foxtrail Drive, Suite 325 Loveland, CO 970-776-3321

SITE SKETCH

NCLP AA06-66-1BHNA

SECTION: 4
TOWNSHIP: 6N
RANGE: 63W

WELL #	WELL NAME	SHL FOOTAGE				SHL LAT °	SHL LONG °	PDOP	ELEV (FT.)	1/4/1/4
1	NCLP USX AA 5-8	1980	FNL	657	FEL	40.51755	-104.45358	1.2	4718	SENE
2	NCLP USX AA 5-9	2041	FSL	599	FEL	40.51409	-104.45338	1.2	4717	NESE
4	CACHE - USX AA 5-23	1502	FSL	1228	FEL	40.51257	-104.45564	1.5	4709	NESE
5	CACHE USX AA 5-10	1996	FSL	2012	FEL	40.51388	-104.45846	1.5	4719	NWSE
8	CACHE-USX AA 5-17	1331	FNL	1165	FEL	40.51931	-104.45541	1.4	4722	SENE
11	BIXLER 32-5	1790	FNL	1797	FEL	40.51803	-104.45768	1.4	4715	SWNE
20	PEIKER 42-6	1994	FNL	649	FEL	40.51735	-104.47263	2.0	4729	SENE
21	PEIKER 32-6	1991	FNL	1970	FEL	40.51733	-104.47738	1.7	4707	SWNE
22	HAGEMIESTER 43-6	2167	FSL	597	FEL	40.51422	-104.47244	1.9	4708	NESE
24	FOSS 6-42	2175	FSL	1778	FEL	40.51418	-104.47668	1.9	4696	NWSE
25	FOSS 6-31	2187	FSL	1885	FWL	40.51413	-104.48201	1.9	4706	NESW
27	FOSS 6-32	2127	FSL	441	FWL	40.51389	-104.48720	1.7	4724	NWSW
33	DILKA 22-6	2100	FNL	1973	FWL	40.51700	-104.48169	1.6	4729	SENW
35	DILKA 6-12	1968	FNL	503	FWL	40.51731	-104.48698	2.6	4736	SWNW
37	FOSS - USX AA 5-19	1305	FNL	1307	FWL	40.51930	-104.46559	1.6	4717	NWNW
38	FOSS USX AA 05-06	2051	FNL	1936	FWL	40.51727	-104.46333	1.7	4709	SENW
39	FOSS-USX AA 05-11	2155	FNL	1985	FWL	40.51426	-104.46315	1.7	4713	NESW
41	FOSS - USX AA 5-5	1988	FNL	667	FWL	40.51740	-104.46789	2.1	4713	SWNW
77	CHAMPLIN AMOCO 1 #309 (P&A)	2590	FSL	660	FWL	40.51544	-104.46814	NA	4700	NWSW

NOTE: THE ABANDONED WELL DATA SHOWN IN RED ABOVE WAS OBTAINED FROM COGCC SCOUT CARDS.