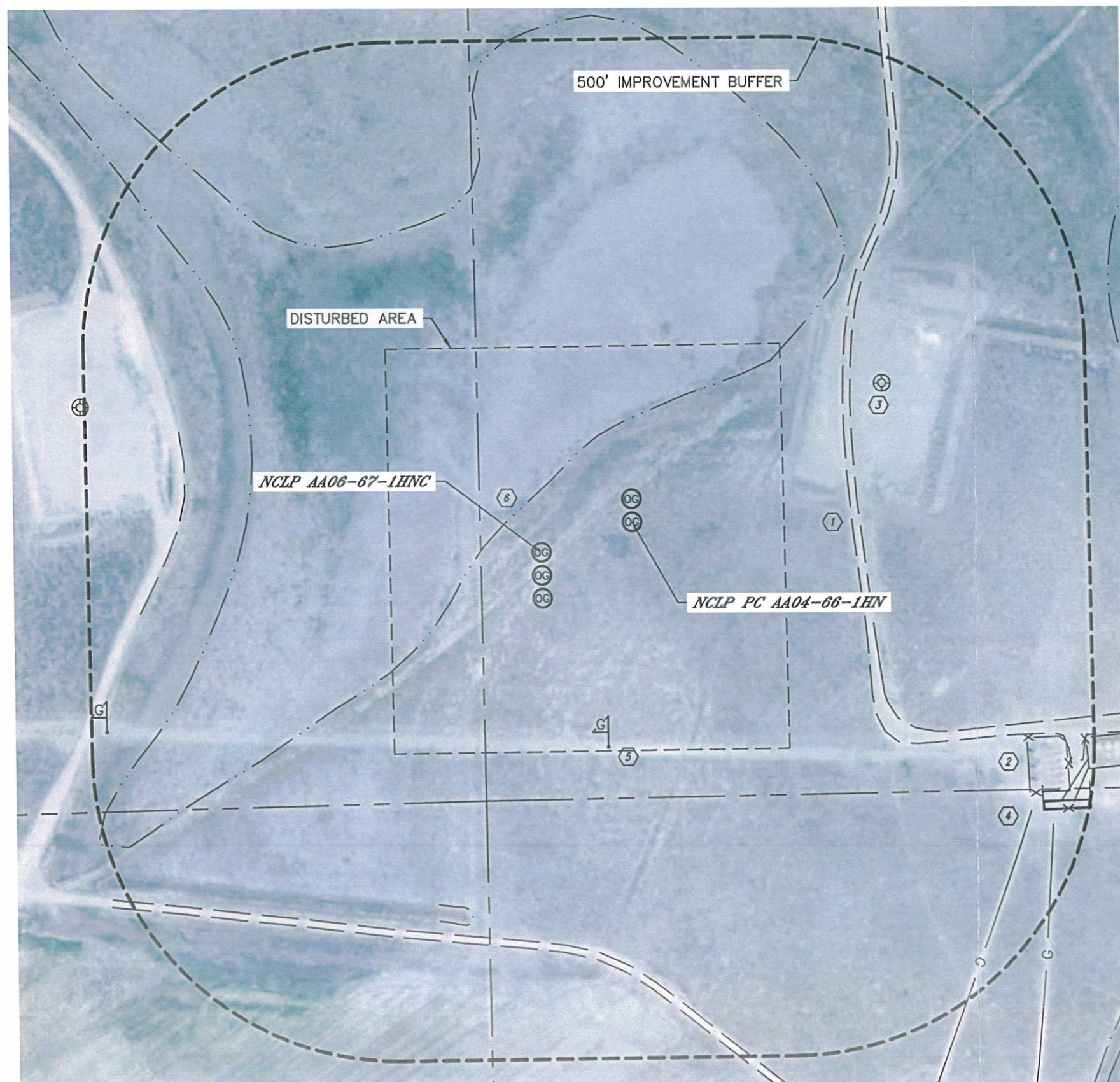


LOCATION DRAWING

NCLP AA06-67-1HNC PAD & NCLP PC AA04-66-1HN PAD

SECTION: 4
TOWNSHIP: 6N
RANGE: 63W



IMPROVEMENTS:

(MEASURED FROM THE PROPOSED NCLP AA06-67-1HNC WELL LOCATION)

- Ⓚ NONE WITHIN 500' IMPROVEMENT BUFFER
- Ⓛ NONE WITHIN 500' IMPROVEMENT BUFFER
- ① ACCESS ROAD 513' E, 596' NW, 633' S
- ② EX. PRODUCTION EQUIPMENT (NOBLE) 851' SE
- ③ EX. WELL HEAD 626' NE
- ④ GAS LINE 905' SE
- ⑤ GAS MARKER 335' SE, 778' SW
- ⑥ LOW AREA 75' NW, 593' SW

NEAREST: BUILDING ±2864' NW, BUILDING UNIT ±2864' NW, HIGH OCCUPANCY BUILDING UNIT 1001'+,
DESIGNATED OUTSIDE ACTIVITY AREA 1001'+, PUBLIC ROAD 2227' N (CR 74),
ABOVE GROUND UTILITY 2203' N, RAILROAD 5280'+, PROPERTY LINE 403' S