

Company: Fritzler Resources Inc / Winslow Resources Inc

Well: Agnas Friedly #1

Field: Sioux

County: Washington

State: Colorado

CEMENT BOND  
GAMMA RAY  
CASING COLLAR LOG

County: Washington

Field: Sioux

Location: 1800' FNL & 660' FWL

Well: Agnas Friedly #1

Company: Fritzler Resources Inc / Winslow

LOCATION

1800' FNL & 660' FWL

Elev.: K.B. 4502.00 ft  
G.L. 4490.00 ft  
D.F.

Permanent Datum: \_\_\_\_\_

GROUND LEVEL \_\_\_\_\_

Elev.: 4490.00 ft \_\_\_\_\_

Log Measured From: KELLY BUSHING

12.00 ft above Perm. Datum

Drilling Measured From: KELLY BUSHING

API Serial No. 05-121-11023-0000

Section 5

Township 2N

Range 51W

PVT DATA			
Oil Density	Run 1	Run 2	Run 3
Water Salinity			
Gas Gravity			
Bo			
Bw			
1/Bg			
Bubble Point Pressure			
Bubble Point Temperature			
Solution GOR			
Maximum Deviation			
CEMENTING DATA			
Primary/Squeeze	Primary		
Casing String No			
Lead Cement Type			
Volume			
Density			
Water Loss			
Additives			
Tail Cement Type			
Volume			
Density			
Water Loss			
Additives			
Expected Cement Top			

Logging Date7-Jun-2013

Run Number1

Depth Driller4550 ft

Schlumberger Depth4547 ft

Bottom Log Interval4539 ft

Top Log Interval3800 ft

Casing Fluid TypeWATER

Salinity

Density8.4 lbm/gal

Fluid Level

BIT/CASING/TUBING STRING

Bit Size7.875 in

From

To

Casing/Tubing Size5.500 in

Weight17 lbm/ft

Grade

From

To

Maximum Recorded Temperatures214 degF

Logger On Bottom7-Jun-201313:07

Unit Number383

LocationFORT MORGAN

Recorded BySHELBY LANGFORD

Witnessed ByDAVE WINSLOW

Logging Date			
Run Number			
Depth Driller			
Schlumberger Depth			
Bottom Log Interval			
Top Log Interval			
Casing Fluid Type			
Salinity			
Density			
Fluid Level			
BIT/CASING/TUBING STRING			
Bit Size			
From			
To			
Casing/Tubing Size			
Weight			
Grade			
From			
To			
Maximum Recorded Temperatures			
Logger On Bottom			
Unit Number			
Location			
Recorded By			
Witnessed By			

## DEPTH SUMMARY LISTING

Date Created: 7-JUN-2013 14:53:48

## Depth System Equipment

Depth Measuring Device		Tension Device		Logging Cable	
Type:	IDW-JA	Type:	CMTD-C	Type:	1-25P
Serial Number:	6508	Serial Number:	1084	Serial Number:	383
Calibration Date:	21-FEB-2013	Calibration Date:	16-MAY-2013	Length:	15000 FT
Calibrator Serial Number:	1	Calibrator Serial Number:	71778	<div>Conveyance Method: Wireline</div> <div>Rig Type: LAND</div>	
Calibration Cable Type:	1-25ZA-XXS	Number of Calibration Points:	10		
Wheel Correction 1:	-4	Calibration RMS:	8		
Wheel Correction 2:	-4	Calibration Peak Error:	17		

## Depth Control Parameters

Log Sequence:	Subsequent Log In the Well
Reference Log Name:	DENSITY NEUTRON
Reference Log Run Number:	1
Reference Log Date:	22-MAY-2013

## Depth Control Remarks

- |  |
|--|
| 1. IDW WHEELS PRIMARY DEPTH CONTROL<br>2. DRUM COUNTER USED AS SECONDARY DEPTH CONTROL<br>3.<br>4.<br>5.<br>6. |
|--|

## DISCLAIMER

THE USE OF AND RELIANCE UPON THIS RECORDED-DATA BY THE HEREIN NAMED COMPANY (AND ANY OF ITS AFFILIATES, PARTNERS, REPRESENTATIVES, AGENTS, CONSULTANTS AND EMPLOYEES) IS SUBJECT TO THE TERMS AND CONDITIONS AGREED UPON BETWEEN SCHLUMBERGER AND THE COMPANY, INCLUDING: (a) RESTRICTIONS ON USE OF THE RECORDED-DATA; (b) DISCLAIMERS AND WAIVERS OF WARRANTIES AND REPRESENTATIONS REGARDING COMPANY'S USE OF AND RELIANCE UPON THE RECORDED-DATA; AND (c) CUSTOMER'S FULL AND SOLE RESPONSIBILITY FOR ANY INFERENCE DRAWN OR DECISION MADE IN CONNECTION WITH THE USE OF THIS RECORDED-DATA.

OTHER SERVICES1 OS1: NONE OS2: OS3: OS4: OS5:	OTHER SERVICES2 OS1: OS2: OS3: OS4: OS5:
REMARKS: RUN NUMBER 1	REMARKS: RUN NUMBER 2
CORRELATED TO COMPENSATED DENSITY	
GAMMA RAY RAN ON 22-MAY-2013 BY PIONEER	
REPEAT AND MAIN RAN	

UNDER 0 PSI	
Marker Joint 4379' to 4393'	
CREW: HOFFMAN	
THANK YOU	

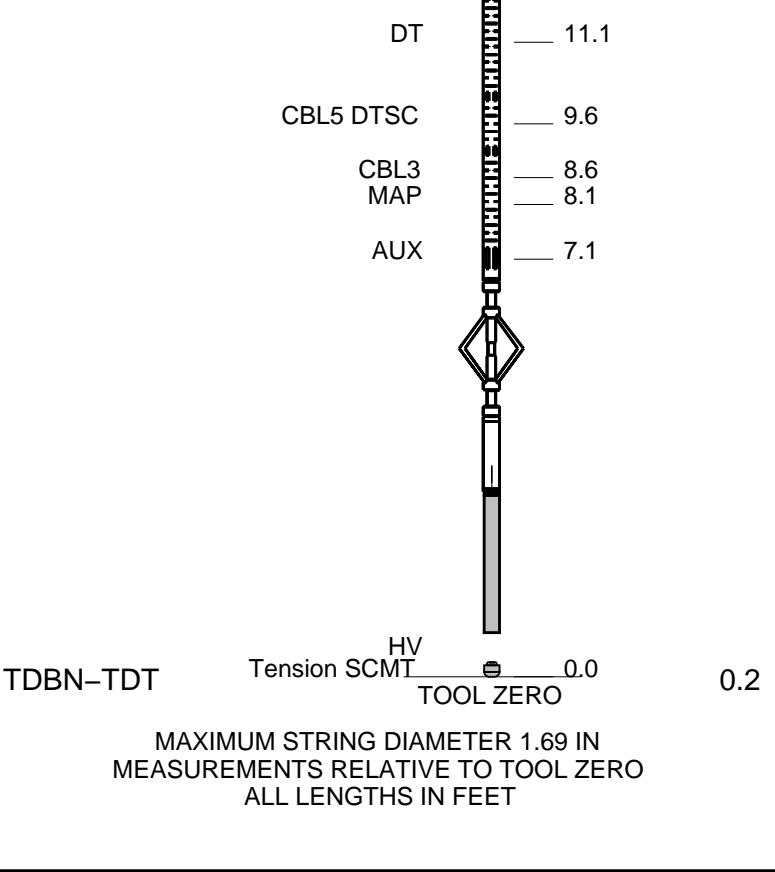
RUN 1 SERVICE ORDER #: CGEO-00007 PROGRAM VERSION: 19C2-270 FLUID LEVEL:			RUN 2 SERVICE ORDER #: PROGRAM VERSION: FLUID LEVEL:		
LOGGED INTERVAL	START	STOP	LOGGED INTERVAL	START	STOP

[illegible]

	RUN 1	RUN 2
1	1	1
2	1	1
3	1	1
4	1	1
5	1	1
6	1	1
7	1	1
8	1	1
9	1	1
10	1	1
11	1	1
12	1	1
13	1	1
14	1	1
15	1	1
16	1	1
17	1	1
18	1	1
19	1	1
20	1	1
21	1	1
22	1	1
23	1	1
24	1	1
25	1	1
26	1	1
27	1	1
28	1	1
29	1	1
30	1	1
31	1	1
32	1	1
33	1	1
34	1	1
35	1	1
36	1	1
37	1	1
38	1	1
39	1	1
40	1	1
41	1	1
42	1	1
43	1	1
44	1	1
45	1	1
46	1	1
47	1	1
48	1	1
49	1	1
50	1	1
51	1	1
52	1	1
53	1	1
54	1	1
55	1	1
56	1	1
57	1	1
58	1	1
59	1	1
60	1	1
61	1	1
62	1	1
63	1	1
64	1	1
65	1	1
66	1	1
67	1	1
68	1	1
69	1	1
70	1	1
71	1	1
72	1	1
73	1	1
74	1	1
75	1	1
76	1	1
77	1	1
78	1	1
79	1	1
80	1	1
81	1	1
82	1	1
83	1	1
84	1	1
85	1	1
86	1	1
87	1	1
88	1	1
89	1	1
90	1	1
91	1	1
92	1	1
93	1	1
94	1	1
95	1	1
96	1	1
97	1	1
98	1	1
99	1	1
100	1	1

WITM-A PSC_16MHZ	SURFACE EQUIPMENT	
---------------------	-------------------	--

DOWNHOLE EQUIPMENT			
MH-22			30.3
MH-22			
AH-38	Detail MT		28.7
	TelStatus		
	CTEM	28.4	28.4
PSPT			
PSC-A			
PSPT-A 1765			
PSTC-A			
PBMS-A			
10k Sapphire_Mano			
RTD_Thermometer			
GR	GR	24.7	
CCL			
PBMS			
	Well_Temp	21.7	
	Manometer	21.5	
	CCL	20.9	
	PBMS PSTC	20.2	
SCMT-CB			20.2
SCMC-CA			
SECH-CA			
CMIR-AG			
SCMS-CB 8258			
SCMX-CA			



Schlumberger

MAIN PASS

MAXIS Field Log

Company: Fritzler Resources Inc / Winslow Resources Inc Well: Agnas Friedly #1

Output DLIS Files

DEFAULT SCMT\_PSP\_004LUP FN:3 PRODUCER 07-Jun-2013 15:47 4556.5 FT 3793.0 FT

OP System Version: 19C2-270

SCMT-CB 19C2-270 PSPT 19C2-270

PIP SUMMARY

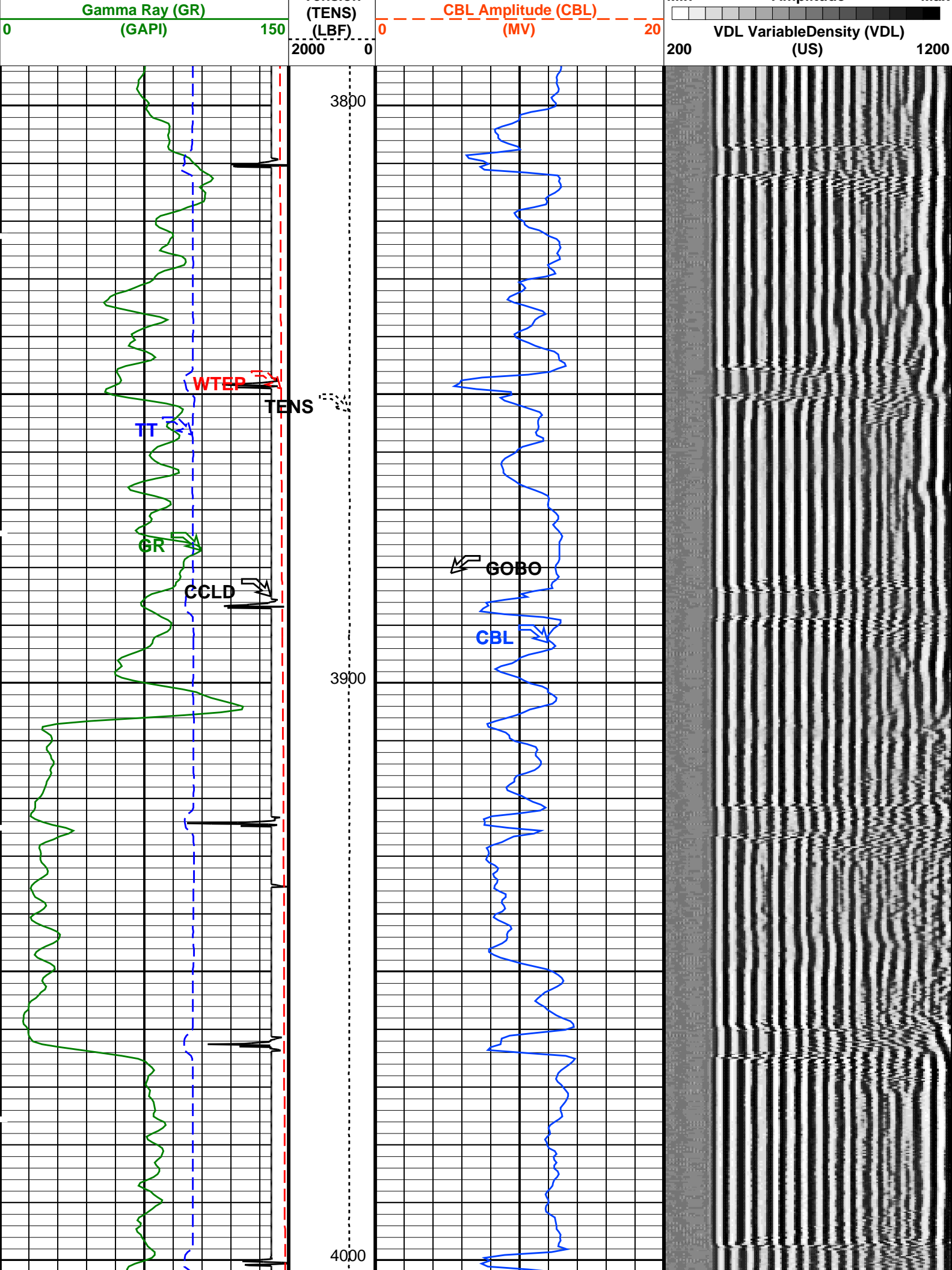
☐ Time Mark Every 60 S

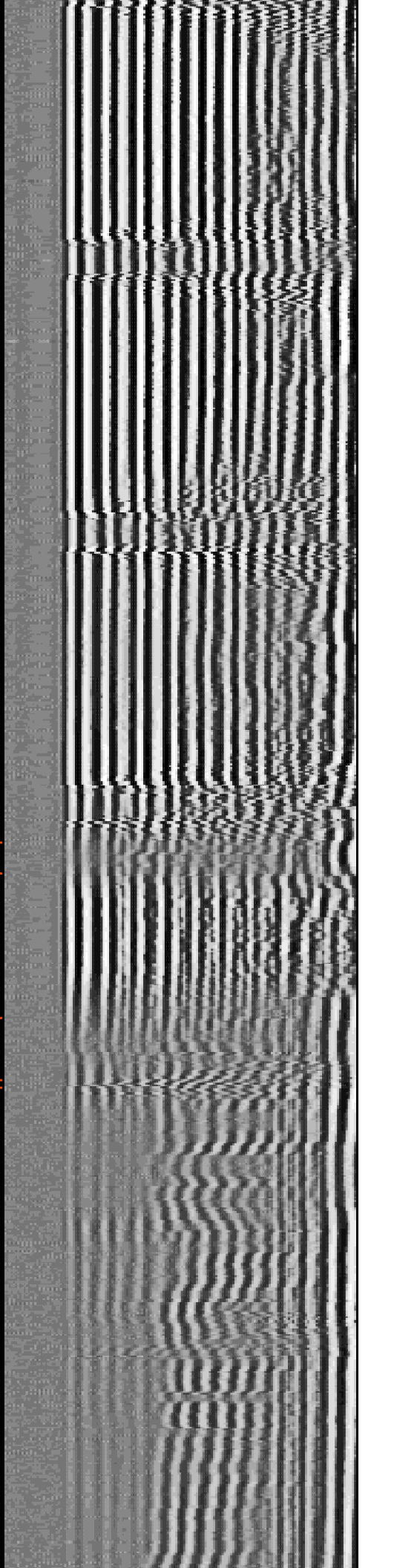
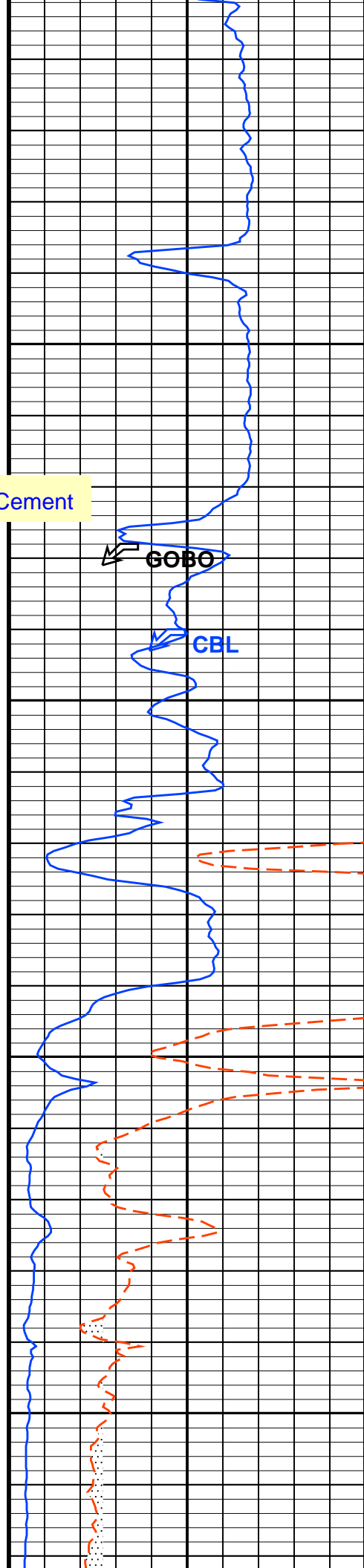
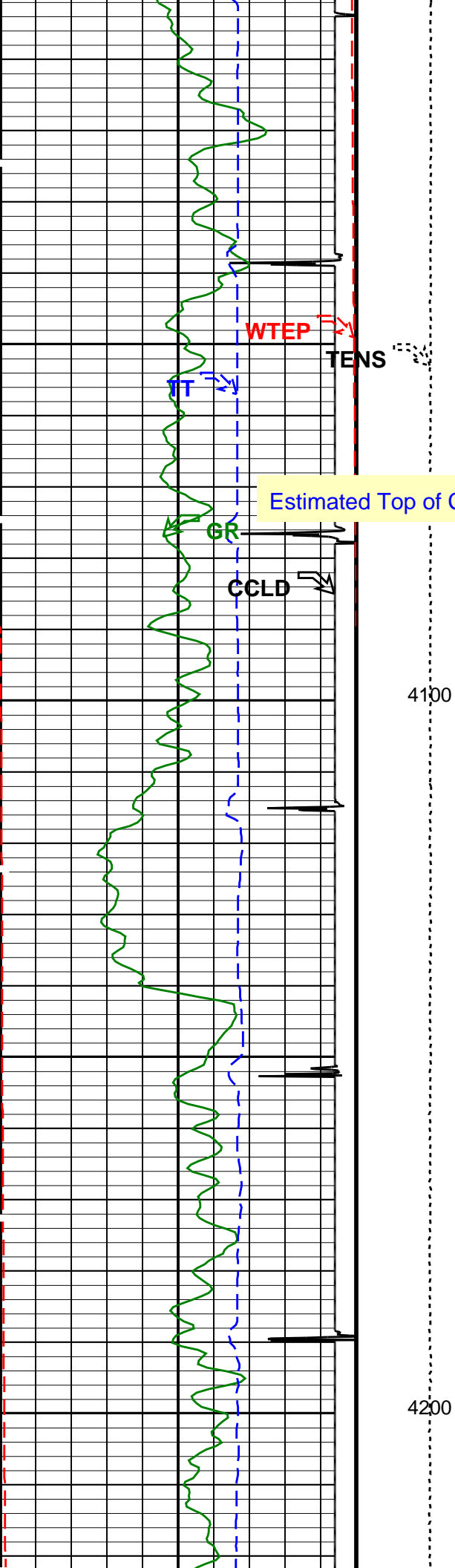
Discriminated CCL (CCLD)		
-3.5	(V)	0.5
COLLARS From CCLD to T1		
Well Temperature (WTEP) (DEGF)		
0		200
Transit Time (TT) (US)		
400		200

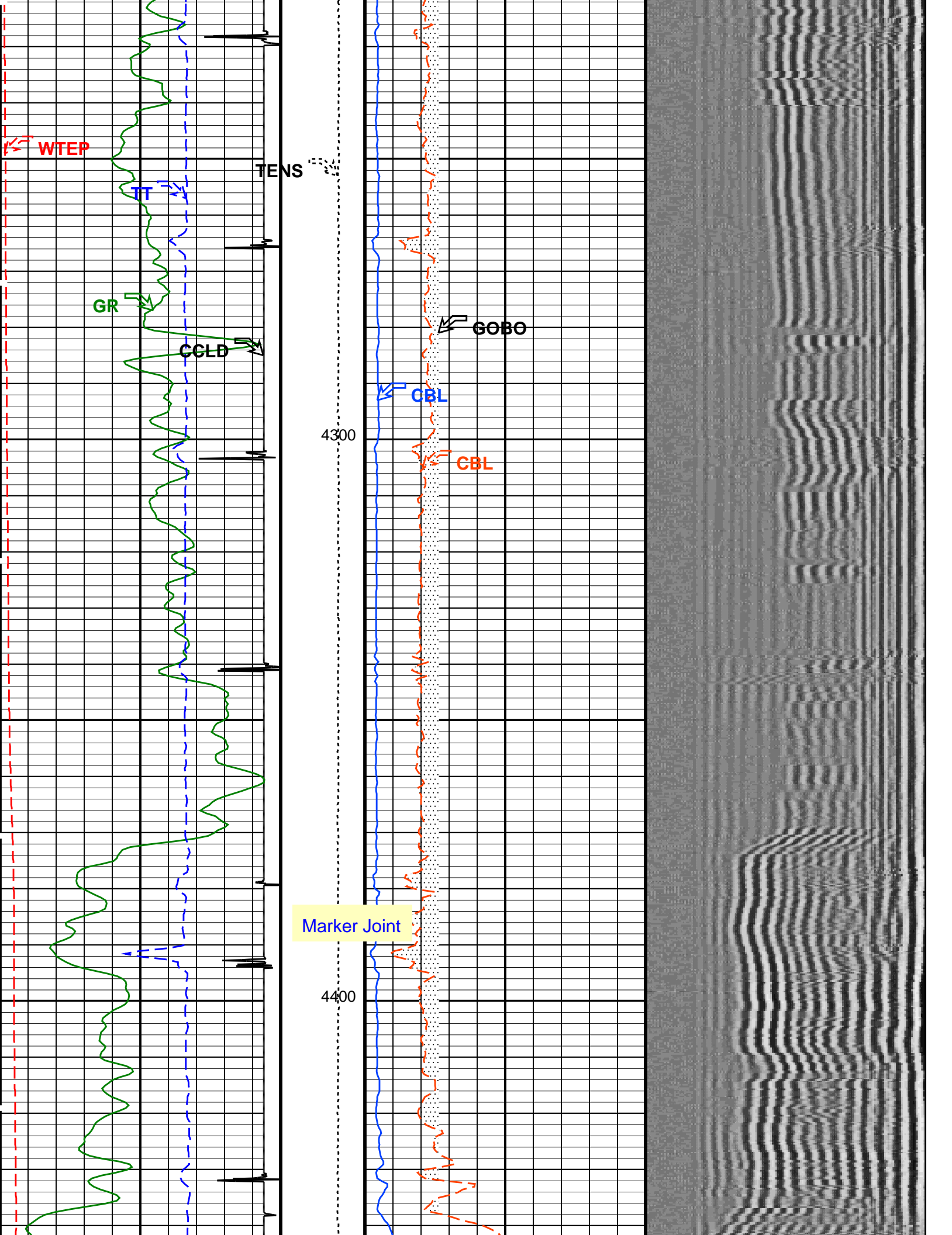
GOOD BOND From ACBL to GOBO		
CBL Amplitude (CBL) (MV)		
0		100

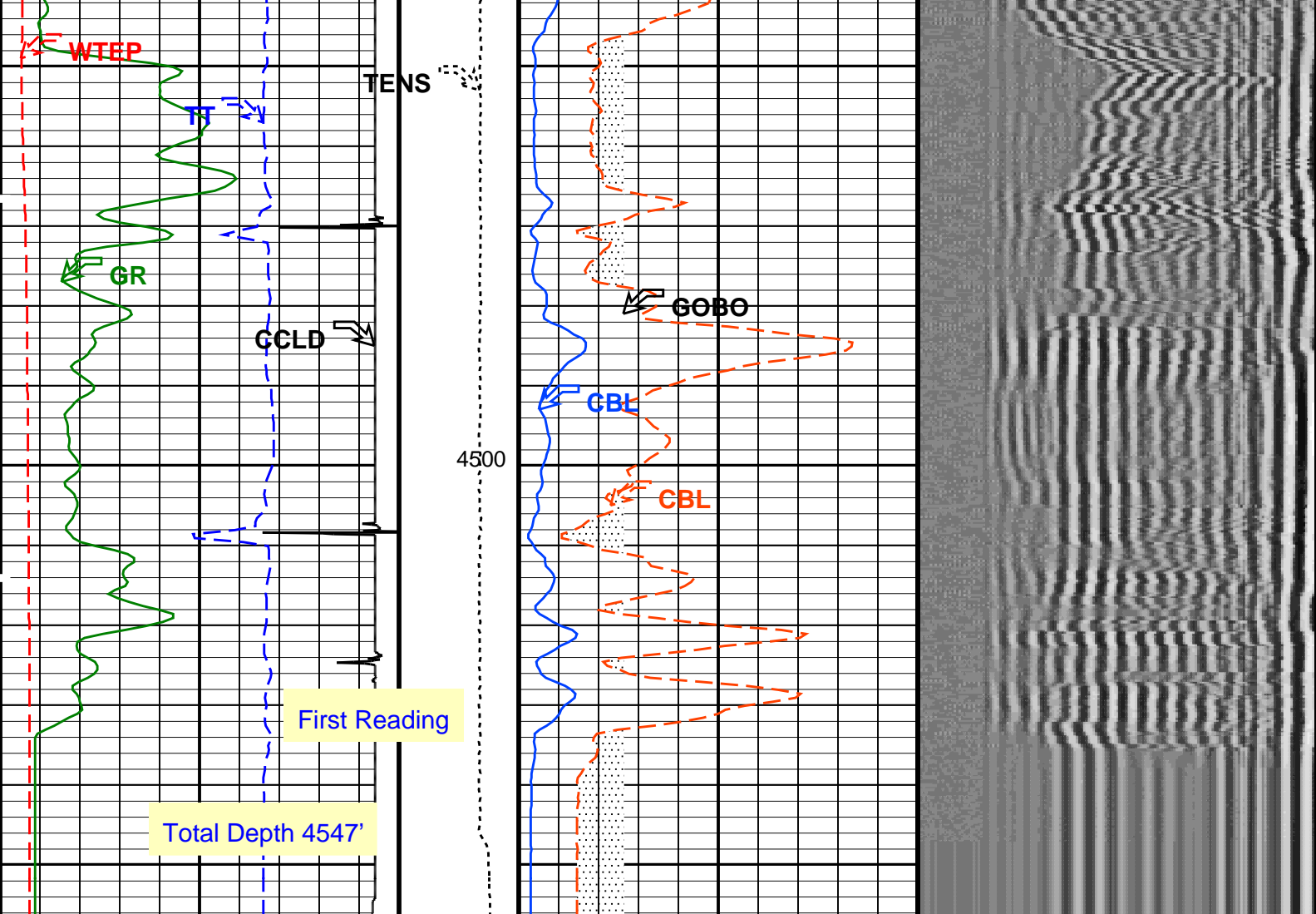
Tension Min Amplitude Max











Gamma Ray (GR) (GAPI)	0	150
Transit Time (TT) (US)	400	200
Well Temperature (WTEP) (DEGF)	0	200
COLLARS From CCLD to T1		
Discriminated CCL (CCLD)		
-3.5 (V)	0.5	

Tension (TENS) (LBF)	2000	0
CBL Amplitude (CBL) (MV)	0	20
CBL Amplitude (CBL) (MV)	0	100
GOOD BOND From ACBL to GOBO		

Min	Amplitude	Max
200	VDL VariableDensity (VDL) (US)	1200

#### PIP SUMMARY

Time Mark Every 60 S

### Parameters

DLIS Name	Description	Value
SCMT-CB: Slim Cement Mapping Tool, 1-11/16 OD		
BILI	Bond Index Level for Zone Isolation	0.8
CB3D	SCMT CBL 3 ft Peak Detection Mode	PEAK
CB3G	SCMT CBL 3 ft Peak Detection T0_Delay and Noise Gate	243.137 US
CB3T	SCMT CBL 3 ft Fixed Threshold Level	20 MV
CB5D	SCMT CBL 5 ft Peak Detection Mode	PEAK
CB5G	SCMT CBL 5 ft Peak Detection T0_Delay and Noise Gate	357.137 US
CB5T	SCMT CBL 5 ft Fixed Threshold Level	20 MV
CBLG	CBL Gate Width	40 US
CBRA	CBL LQC Reference Amplitude in Free Pipe	71 MV



CMCF	CBL Cement Type Compensation Factor	1	SCAN
CMTC	SCMT Slow Channel Multiplexer Mode	LOG	LOG
CMTM	SCMT Operating Mode	VCC	VCC
CSCS	SCMT Slow Channel Index	0.306128	IN
CTHI	Casing Thickness	204.5	US/F
DTF	Delta-T Fluid	0	DB/F
FATT	Acoustic Attenuation due to Fluid	1	
FCF	CBL Fluid Compensation Factor	2.61257	MV
GOBO	Good Bond	PEAK	
MAPD	SCMT MAP Peak Detection Mode	186.137	US
MAPG	SCMT MAP Peak Detection T0_Delay and Noise Gate	30	MV
MAPT	SCMT MAP Fixed Threshold Level	13.848	DB/F
MATT	Maximum Attenuation	1	
MCCF	MAP Cement Type Compensation Factor	4.75	FT
MCi	Minimum Cemented Interval for Isolation	7.2608	MV
MMSA	MAP Minimum Sonic Amplitude	1.14425	MV
MSA	Minimum Sonic Amplitude	OFF	
PEDE	Peak Detection On/Off Switch in Playback	5	
VDLG	VDL Manual Gain	6.8	MRAY
ZCMT	Acoustic Impedance of Cement		
System and Miscellaneous			
CSIZ	Current Casing Size	5.500	IN
CWEI	Casing Weight	17.00	LB/F
DFD	Drilling Fluid Density	8.40	LB/G
TD	Total Depth	-50000	FT

Format: CBL\_VDL Vertical Scale: 5" per 100' Graphics File Created: 07-Jun-2013 15:47

## OP System Version: 19C2-270

SCMT-CB 19C2-270 PSPT 19C2-270

## Output DLIS Files

DEFAULT SCMT\_PSP\_004LUP FN:3 PRODUCER 07-Jun-2013 15:47

**Schlumberger**

**REPEAT PASS**

MAXIS Field Log

Company: Fritzler Resources Inc / Winslow Resources Inc Well: Agnas Friedly #1

## Input DLIS Files

DEFAULT SCMT\_PSP\_003LUP FN:2 PRODUCER 07-Jun-2013 15:34 4503.5 FT 4290.5 FT

## Output DLIS Files

DEFAULT SCMT\_PSP\_005PUP FN:4 PRODUCER 07-Jun-2013 16:10 4504.0 FT 4291.0 FT

## OP System Version: 19C2-270

SCMT-CB 19C2-270 PSPT 19C2-270

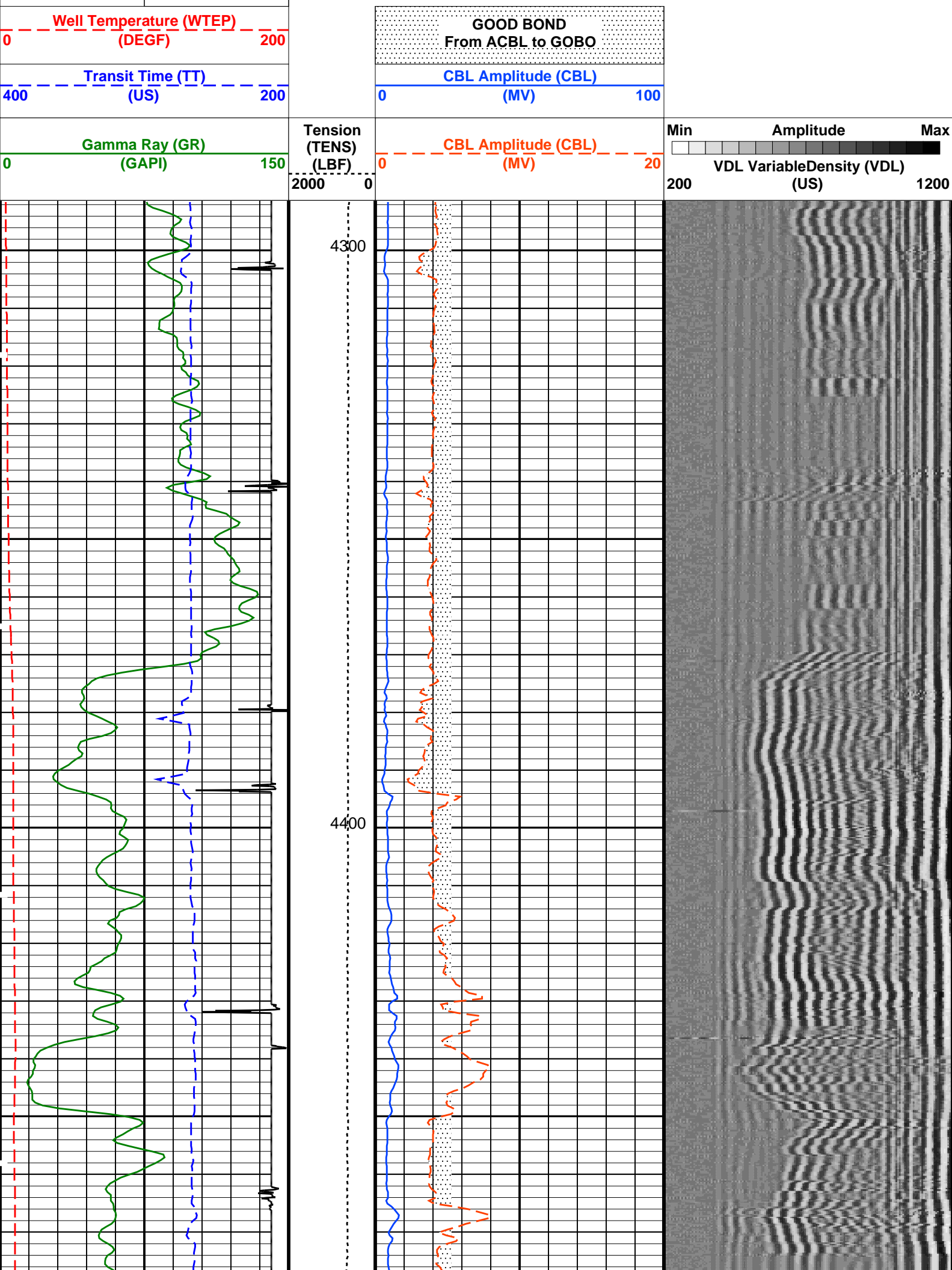
## PIP SUMMARY

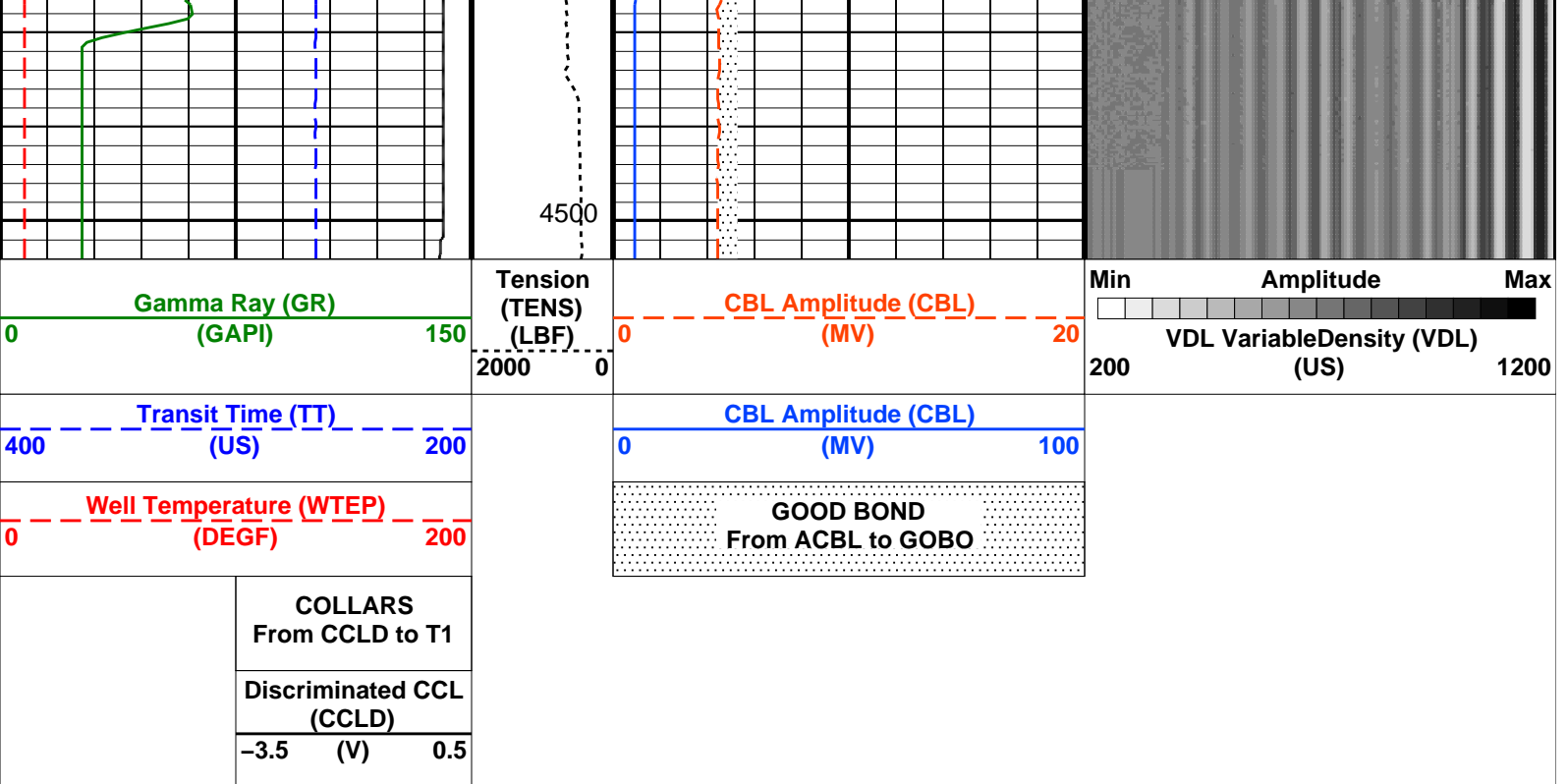
Time Mark Every 60 S

Discriminated CCL  
(CCLD)

-3.5 (V) 0.5

COLLARS  
From CCLD to T1





### PIP SUMMARY

Time Mark Every 60 S

## Parameters

DLIS Name	Description	Value
SCMT-CB: Slim Cement Mapping Tool, 1-11/16 OD		
BILI	Bond Index Level for Zone Isolation	0.8
CB3D	SCMT CBL 3 ft Peak Detection Mode	PEAK
CB3G	SCMT CBL 3 ft Peak Detection T0_Delay and Noise Gate	243.137 US
CB3T	SCMT CBL 3 ft Fixed Threshold Level	20 MV
CB5D	SCMT CBL 5 ft Peak Detection Mode	PEAK
CB5G	SCMT CBL 5 ft Peak Detection T0_Delay and Noise Gate	357.137 US
CB5T	SCMT CBL 5 ft Fixed Threshold Level	20 MV
CBLG	CBL Gate Width	40 US
CBRA	CBL LQC Reference Amplitude in Free Pipe	71 MV
CMCF	CBL Cement Type Compensation Factor	1
CMTc	SCMT Slow Channel Multiplexer Mode	SCAN
CMTM	SCMT Operating Mode	LOG
CSCS	SCMT Slow Channel Index	VCC
CTHI	Casing Thickness	0.306128 IN
DTF	Delta-T Fluid	204.5 US/F
FATT	Acoustic Attenuation due to Fluid	0 DB/F
FCF	CBL Fluid Compensation Factor	1
GOBO	Good Bond	2.61257 MV
MAPD	SCMT MAP Peak Detection Mode	PEAK
MAPG	SCMT MAP Peak Detection T0_Delay and Noise Gate	186.137 US
MAPT	SCMT MAP Fixed Threshold Level	30 MV
MATT	Maximum Attenuation	13.848 DB/F
MCCF	MAP Cement Type Compensation Factor	1
MCI	Minimum Cemented Interval for Isolation	4.75 FT
MMSA	MAP Minimum Sonic Amplitude	7.2608 MV
MSA	Minimum Sonic Amplitude	1.14425 MV
PEDE	Peak Detection On/Off Switch in Playback	OFF
VDLG	VDL Manual Gain	5
ZCMT	Acoustic Impedance of Cement	6.8 MRAY
System and Miscellaneous		
CSIZ	Current Casing Size	5.500 IN
CWEI	Casing Weight	17.00 LB/F
DFD	Drilling Fluid Density	8.40 LB/G
DO	Depth Offset for Playback	0.5 FT
PP	Playback Processing	NORMAL
TD	Total Depth	-50000 FT

Format: CBL\_VDL Vertical Scale: 5" per 100'

Graphics File Created: 07-Jun-2013 16:10

## OP System Version: 19C2-270

SCMT-03	1502-270	1502-270	1502-270			
Input DLIS Files						
DEFAULT	SCMT_PSP_003LUP	FN:2	PRODUCER	07-Jun-2013 15:34	4503.5 FT	4290.5 FT
Output DLIS Files						
DEFAULT	SCMT_PSP_005PUP	FN:4	PRODUCER	07-Jun-2013 16:10		

Company:	Fritzler Resources Inc / Winslow Resources Inc	Schlumberger
Well:	Agnas Friedly #1	
Field:	Sioux	
County:	Washington	
State:	Colorado	
CEMENT BOND		
GAMMA RAY		
CASING COLLAR LOG		