

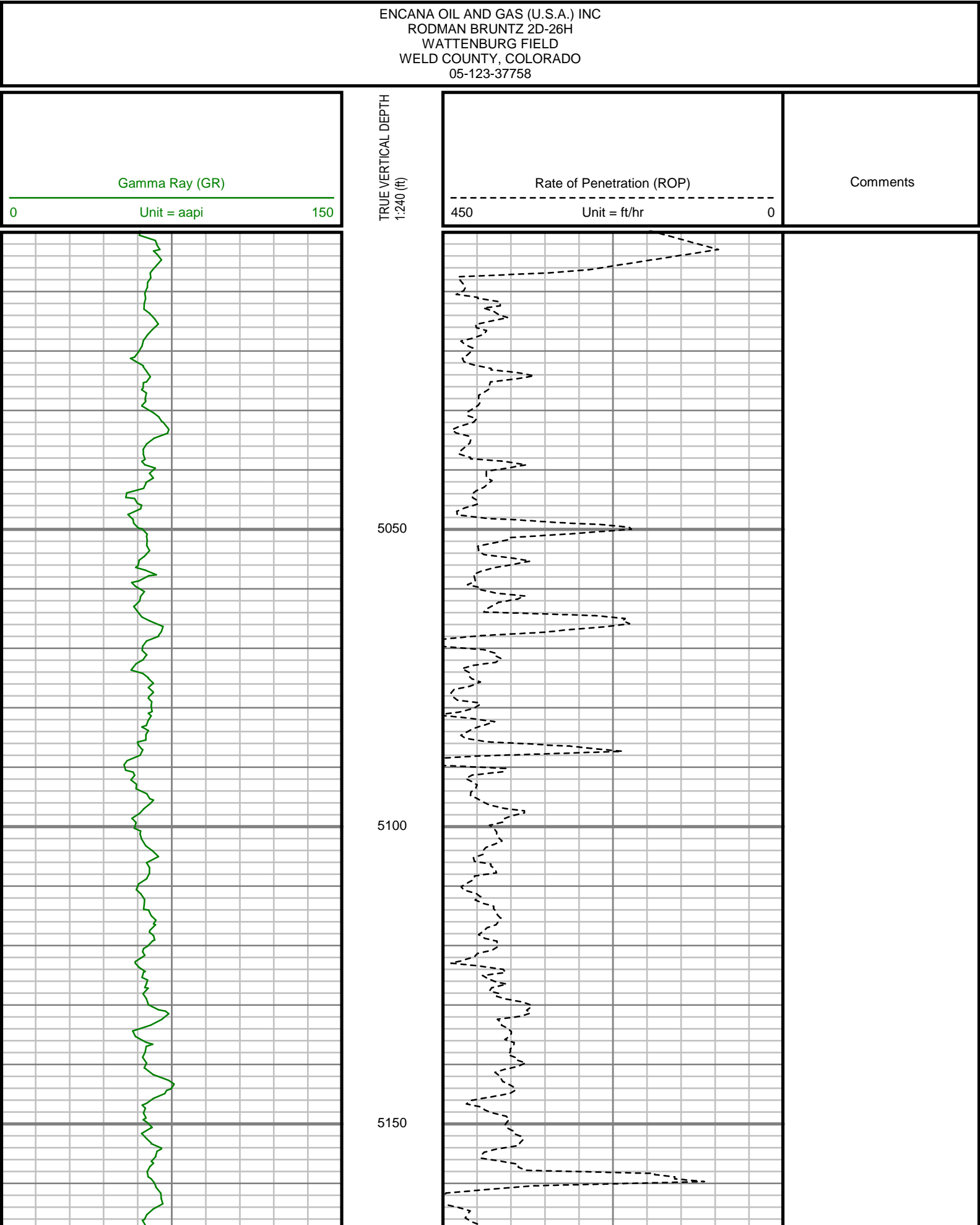


GAMMA RAY

5" = 100' FEET TVD

COMPANY : ENCANA OIL AND GAS (U.S.A.) INC WELL : RODMAN BRUNTZ 2D-26H FIELD : WATTENBURG COUNTY : WELD STATE : COLORADO COUNTRY : U.S.A. UWI : 05-123-37758											
COMPANY : ENCANA OIL AND GAS (U.S.A.) INC WELL : RODMAN BRUNTZ 2D-26H FIELD : WATTENBURG COUNTY : WELD STATE : COLORADO COUNTRY : U.S.A. UWI : 05-123-37758											
DEPTH REF. : R.K.B. REF. HEIGHT : 13.000 ft GROUND LEVEL : 5098.000 ft						OTHER SERVICES WELL LOCATION LAT:40°6'53.640"N LONG:104°44'47.868"W N:1285597.18 ft E:3210701.18 ft SEC:26 TWP:2N RANGE:66W					
BOREHOLE RECORD						DEVIATION RECORD					
HOLE SIZE in FROM ft TO ft						INCLINATION deg FROM ft TO ft					
12.25 0 1241						0 - 12 0 7007					
8.75 1241 7739						12 - 82 7007 7739					
6.125 7739 14700						82 - 92 7739 14700					
CASING RECORD											
CASING SIZE in FROM ft TO ft											
9.625 0 1231											
7 0 7929											
						DRIILLING CO.: ENSIGN RIG: 124 LMD UNIT NO.: C-70 SPUD DATE: 11/01/2013 LMD START DATE: 11/03/2013 LMD END DATE: 11/13/2013 TOTAL DEPTH: 14700 ft					
						DISTRICT: CASPER DEPTH: 5000 ft DEPTH: 14700 ft					

All interpretations are opinions based on inferences from electrical or other measurements and we cannot, and do not guarantee the accuracy or correctness of any interpretations, and we shall not, except in the case of gross or willful negligence on our part, be liable or responsible for any loss, costs, damages or expenses incurred or sustained by anyone resulting from any interpretation made by any of our officers, agents or employees. These interpretations are also subject to our general terms and conditions as set out in our current price schedule.



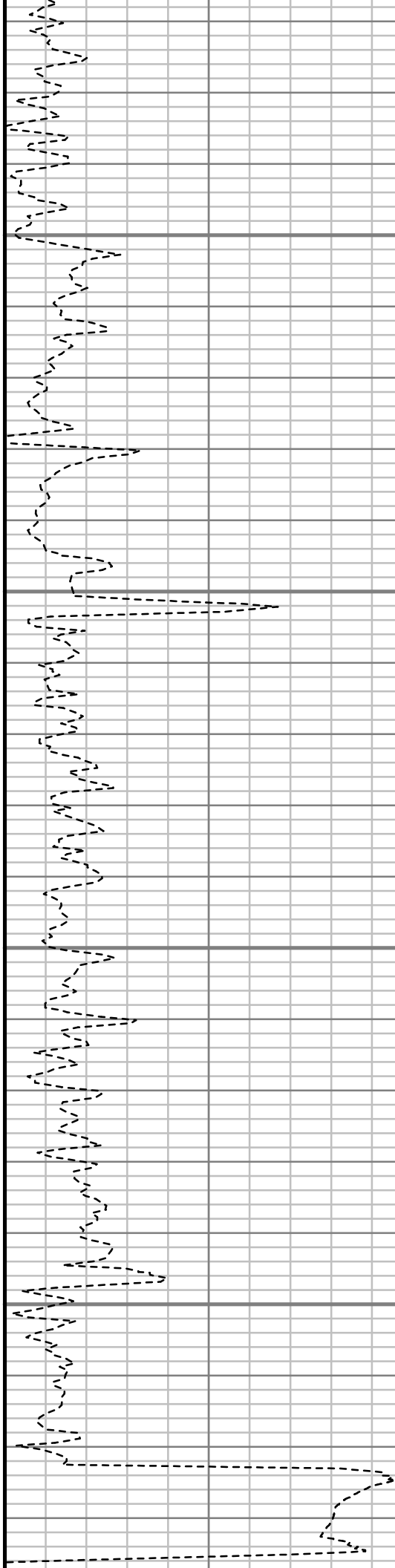


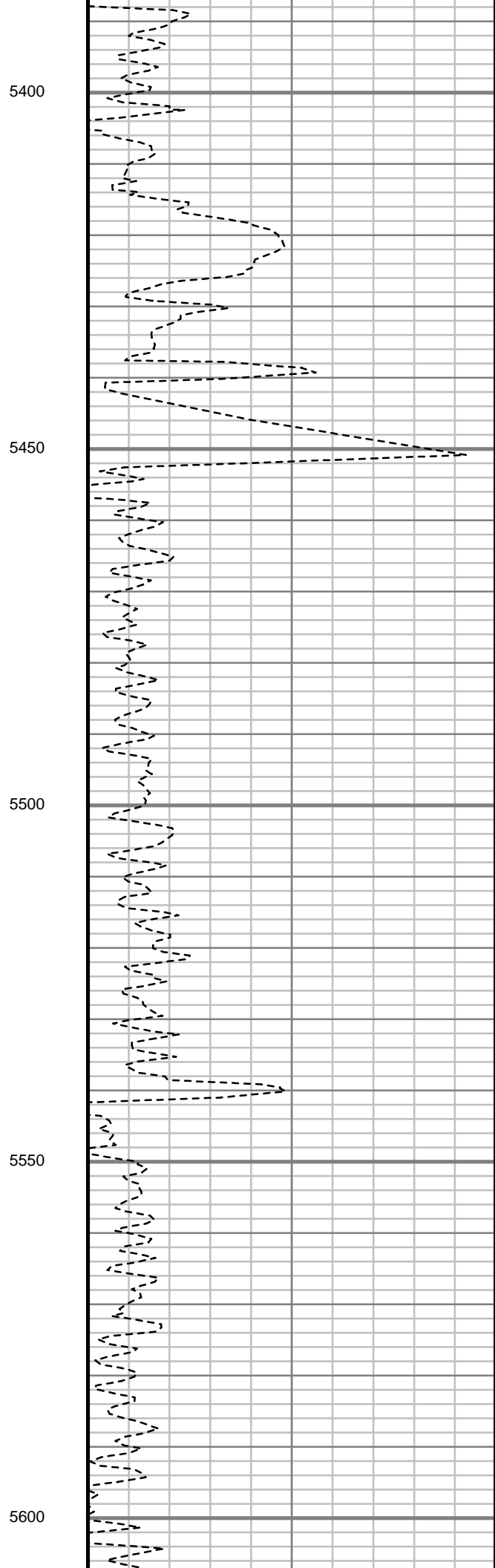
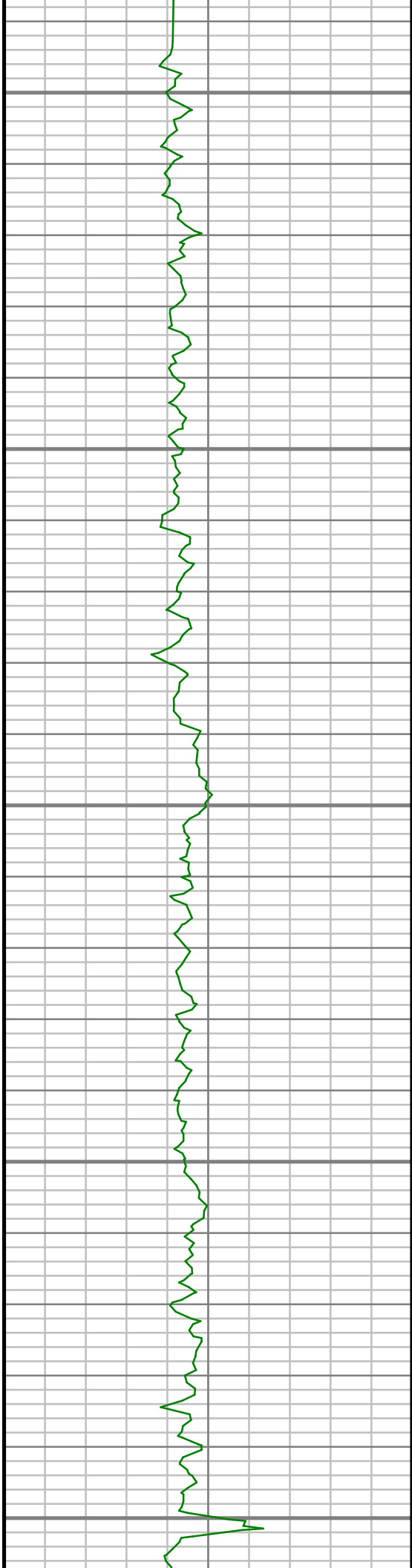
5200

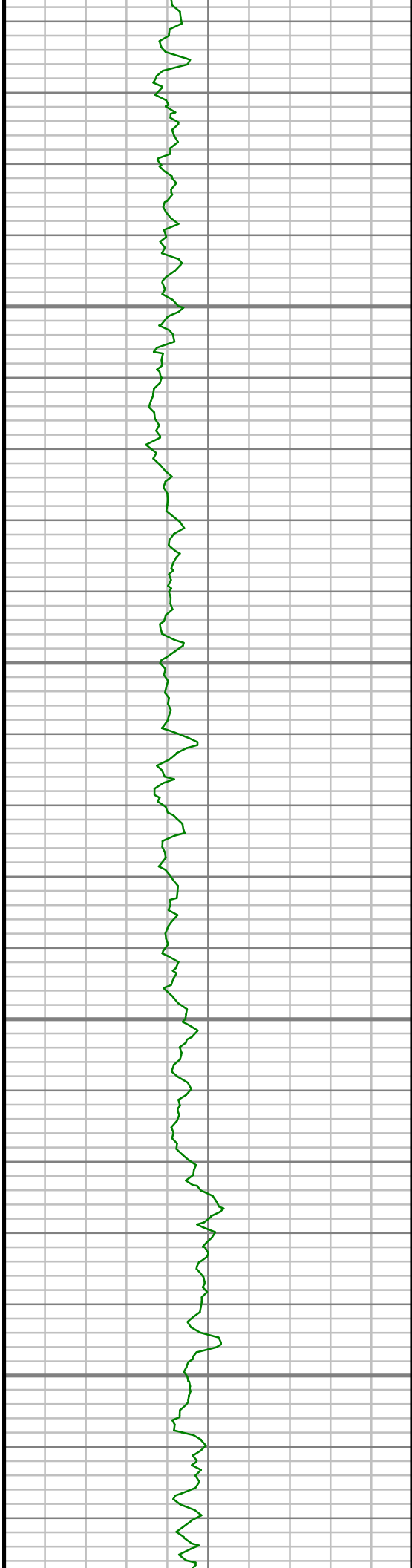
5250

5300

5350





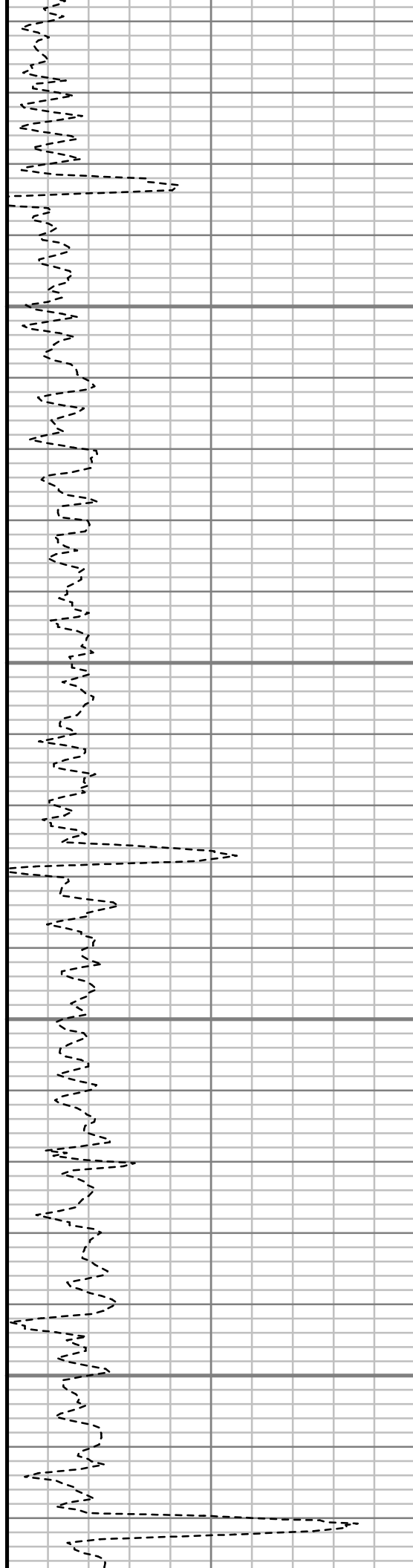


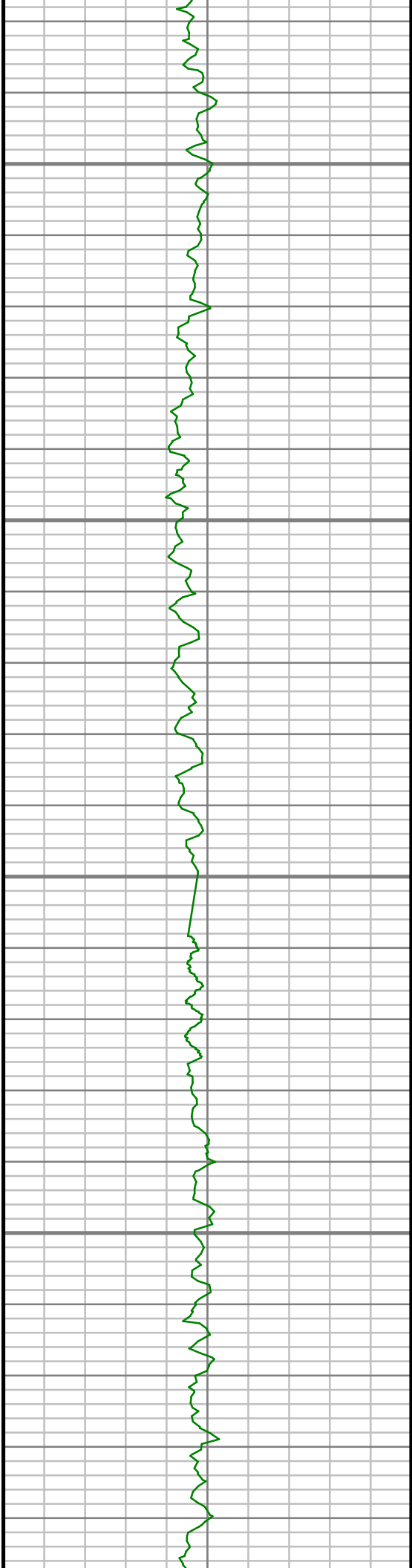
5650

5700

5750

5800



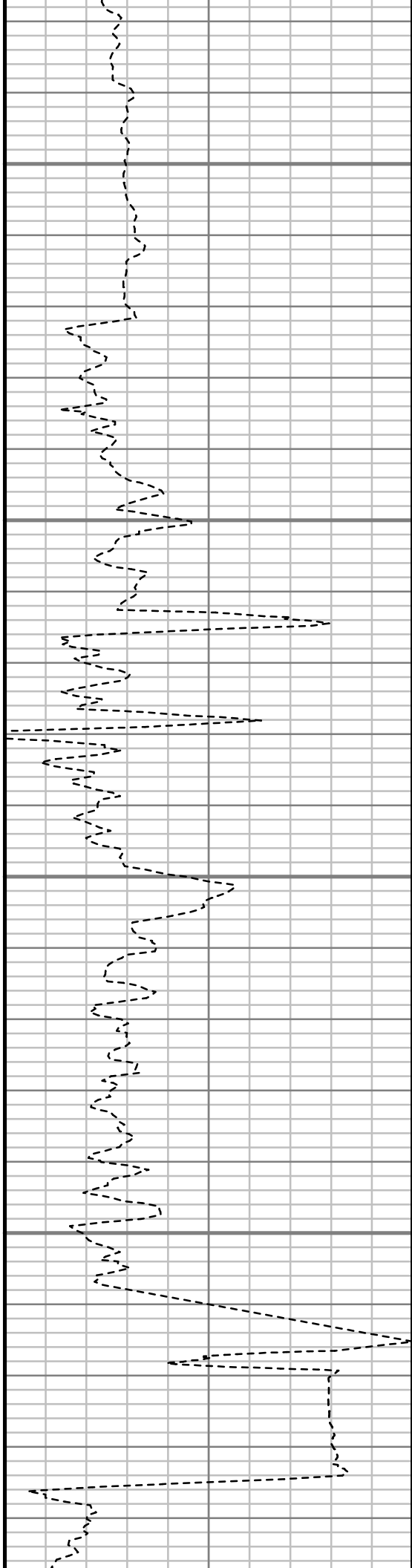


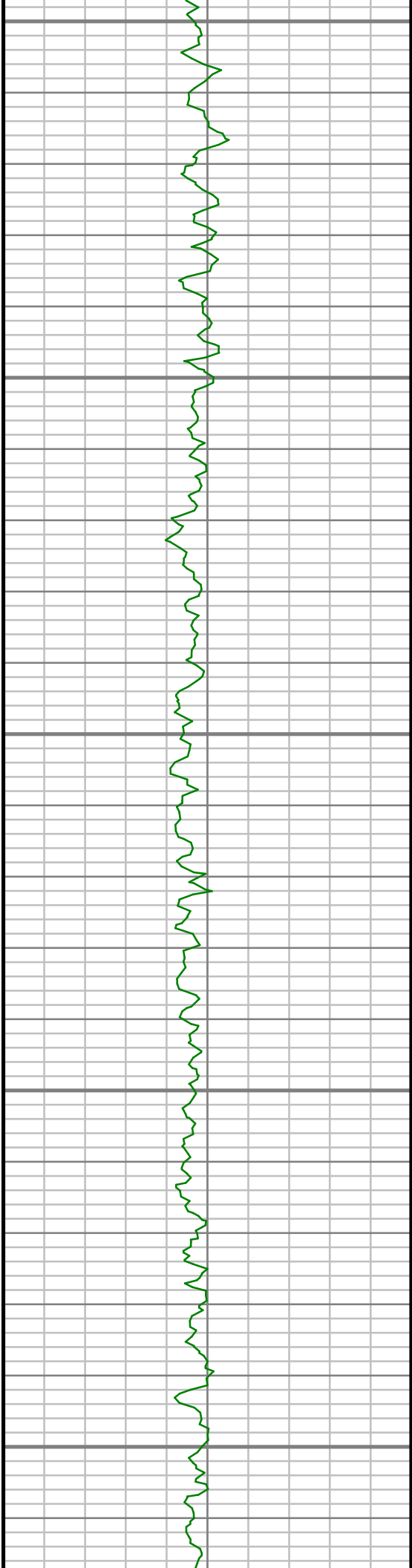
5850

5900

5950

6000





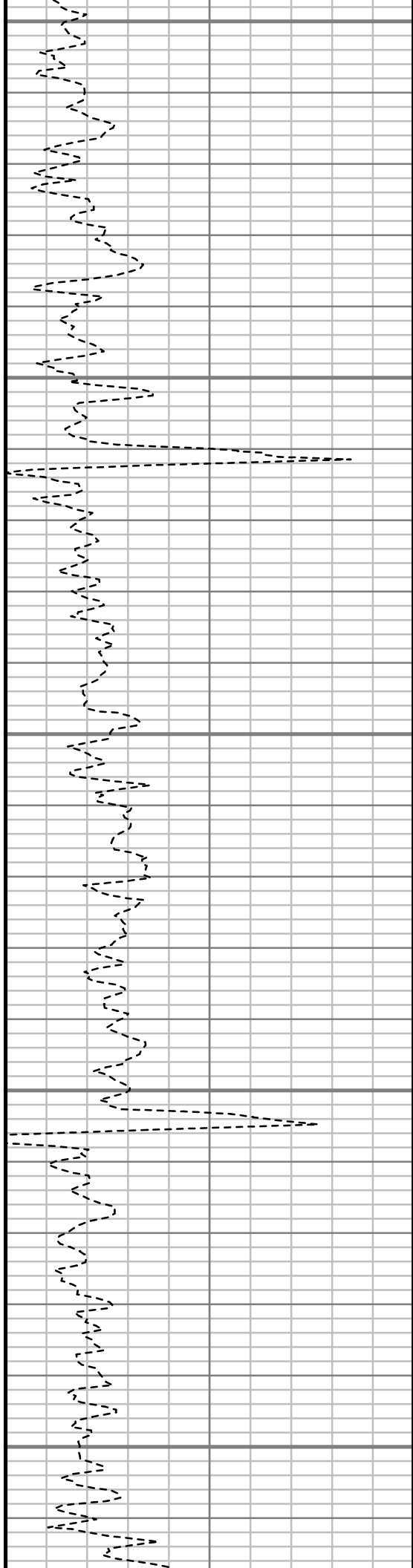
6050

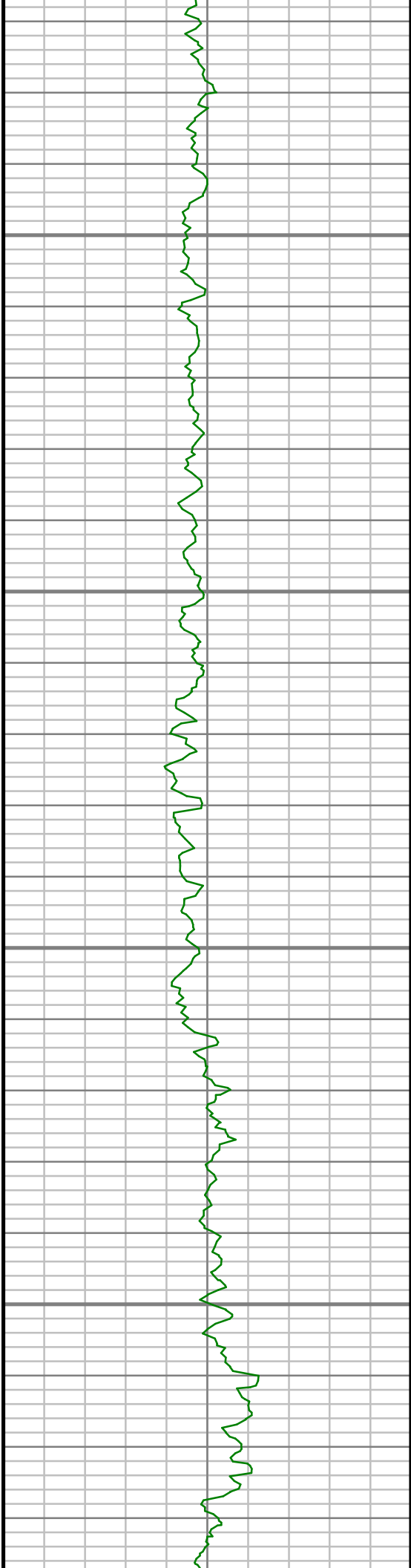
6100

6150

6200

6250



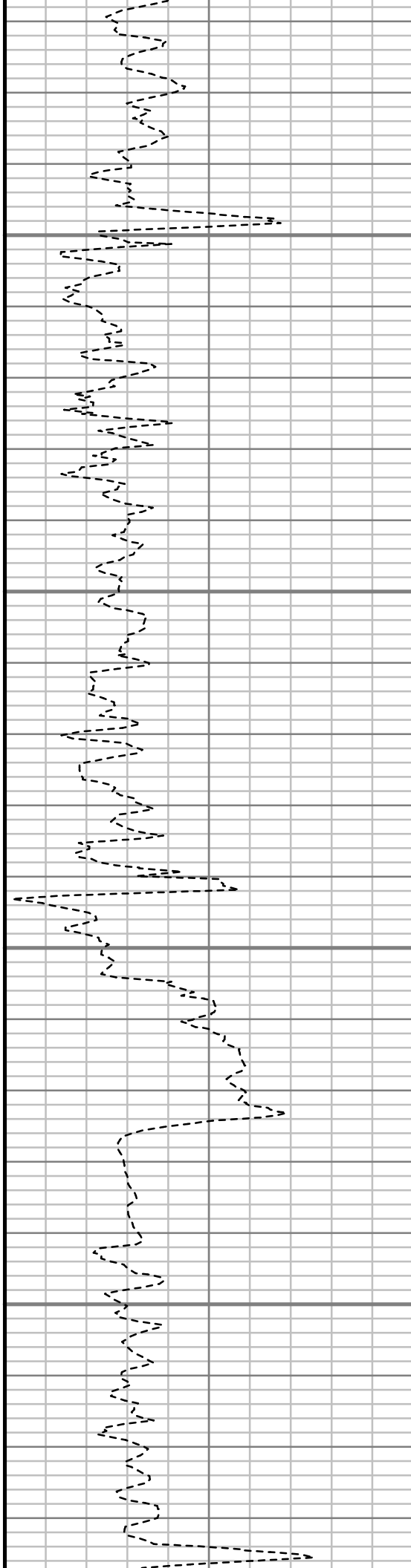


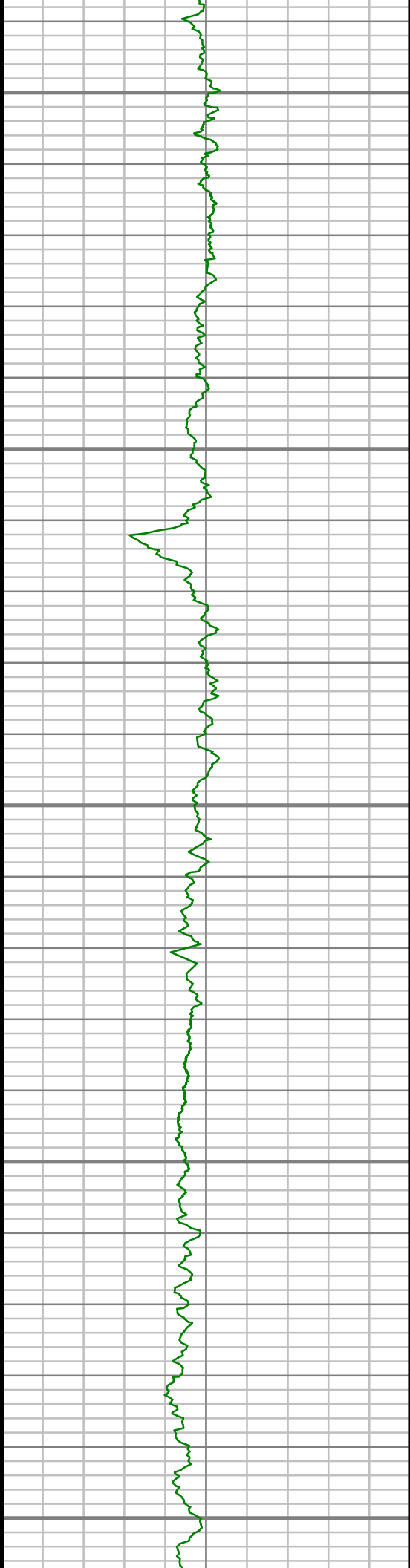
6300

6350

6400

6450





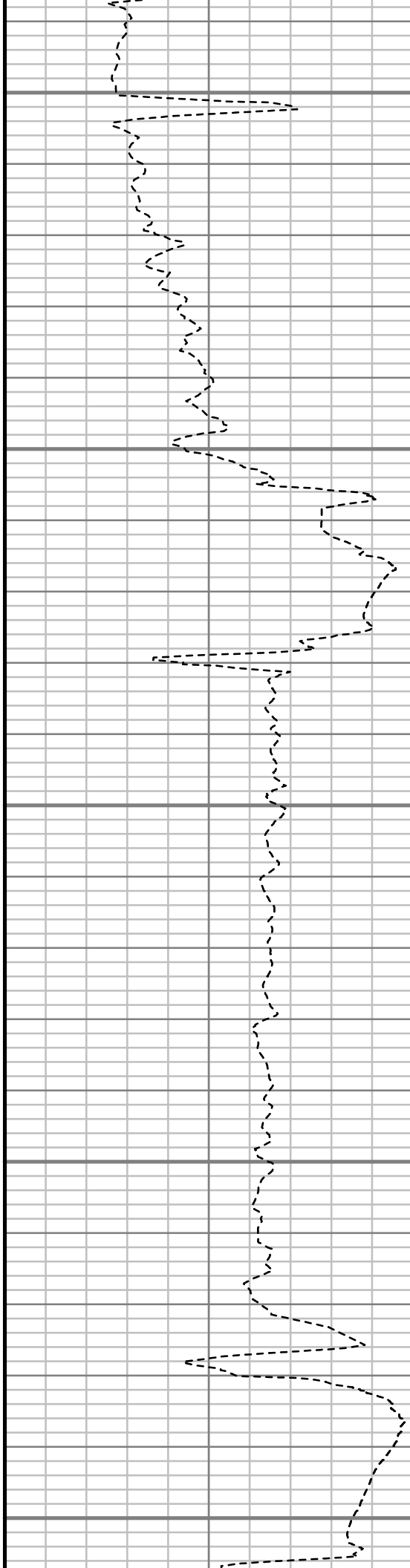
6500

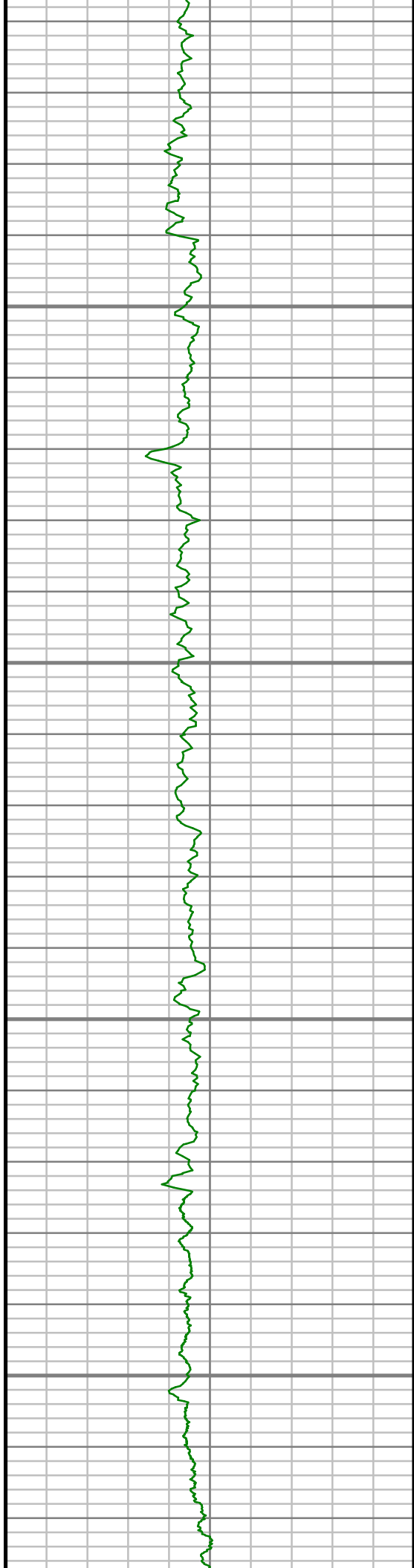
6550

6600

6650

6700



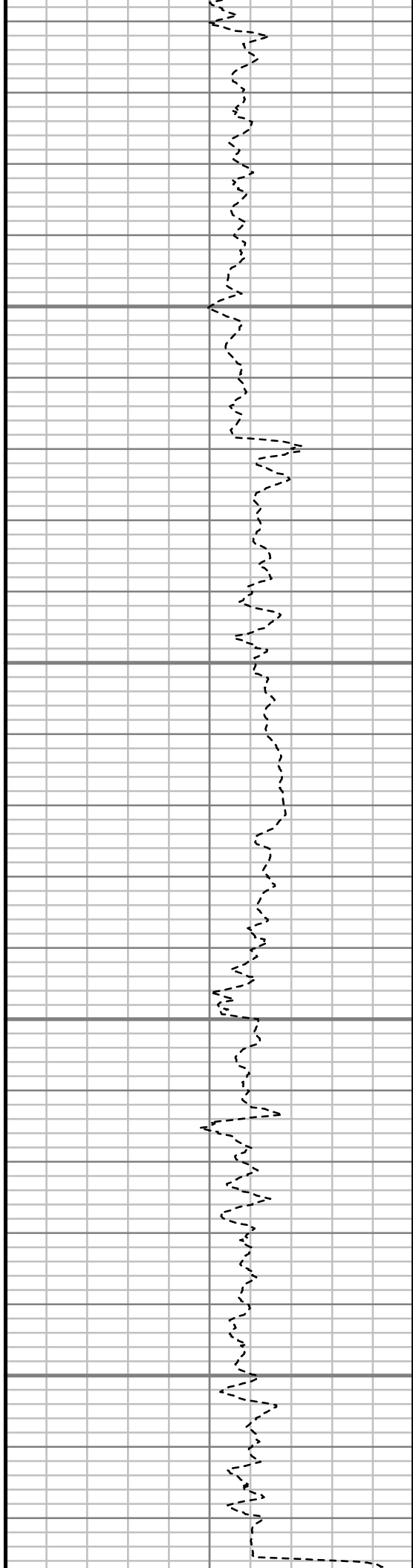


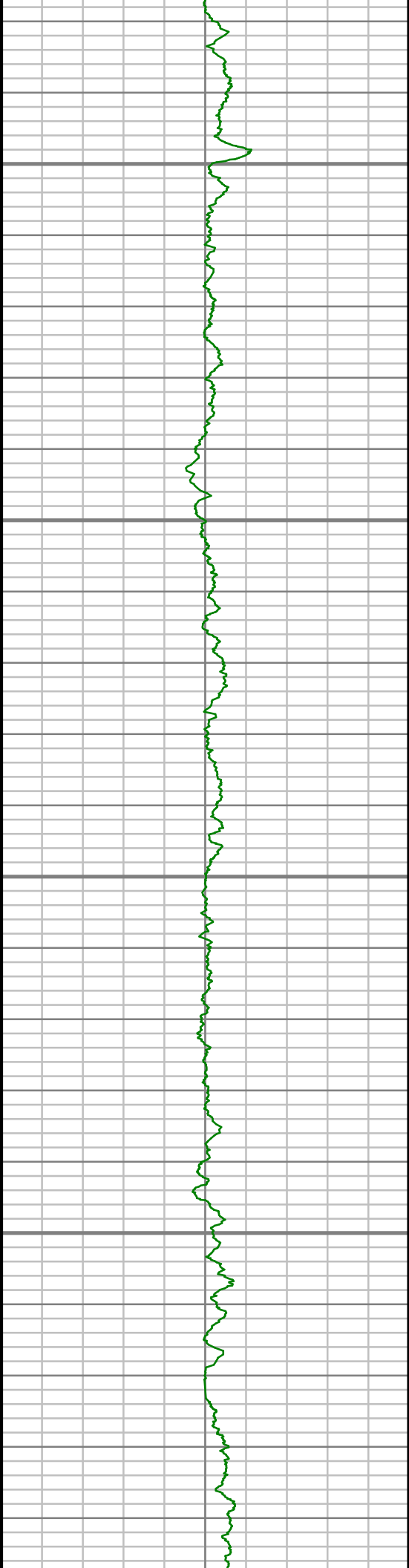
6750

6800

6850

6900



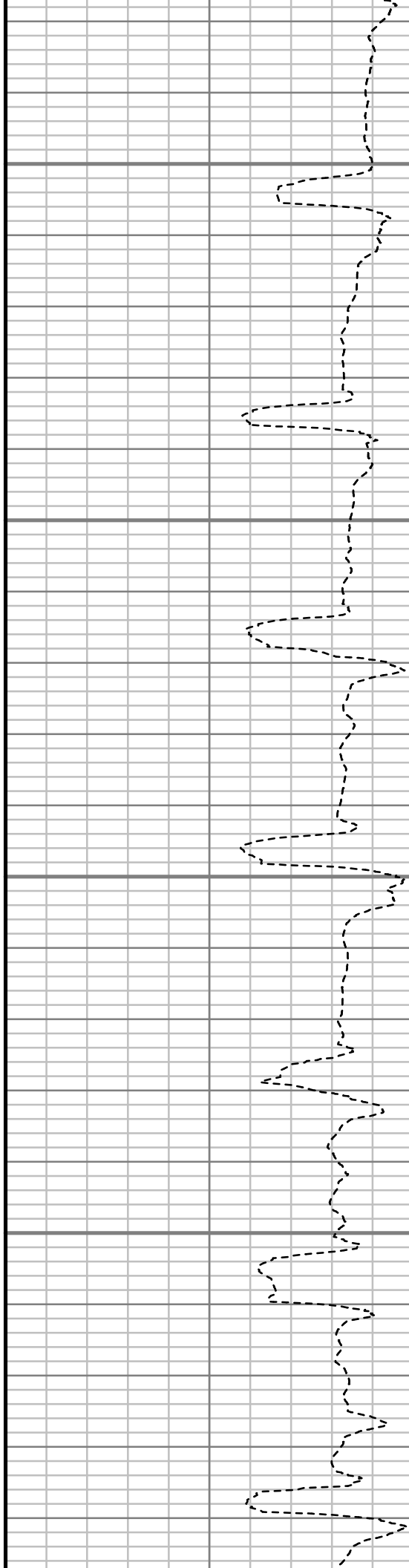


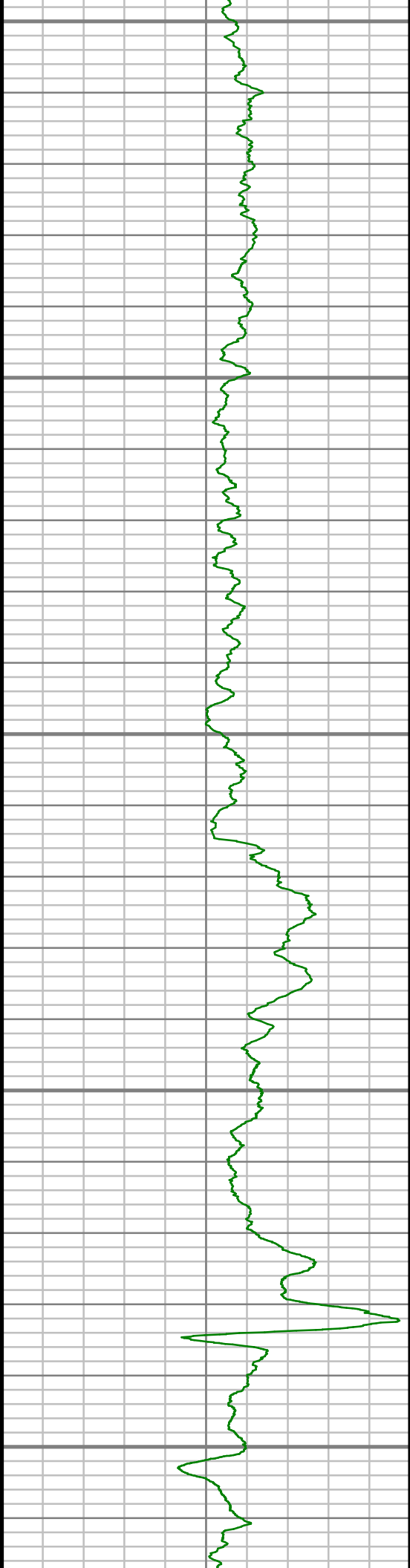
6950

7000

7050

7100





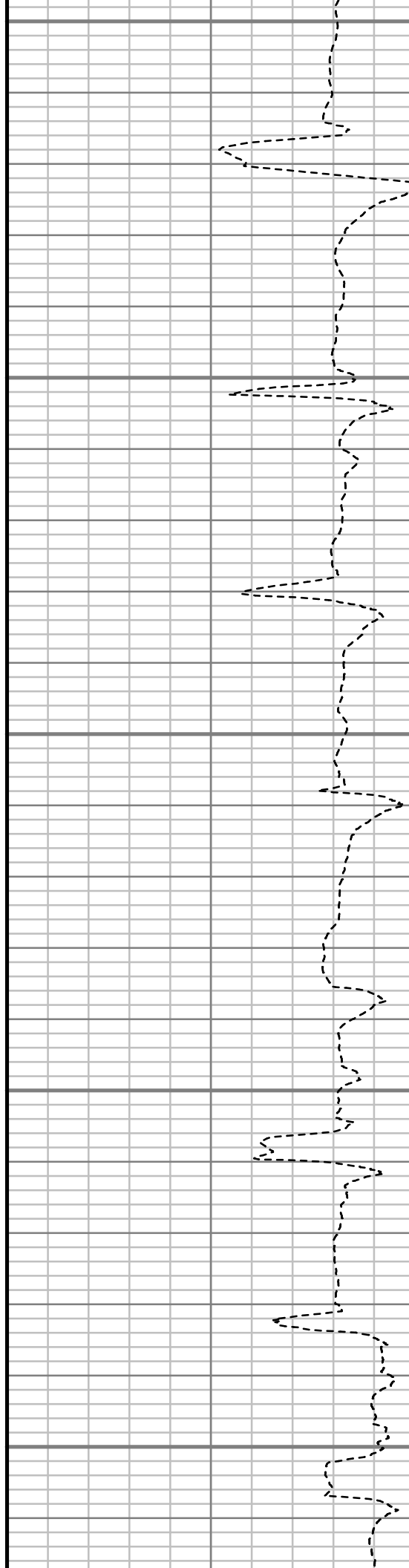
7150

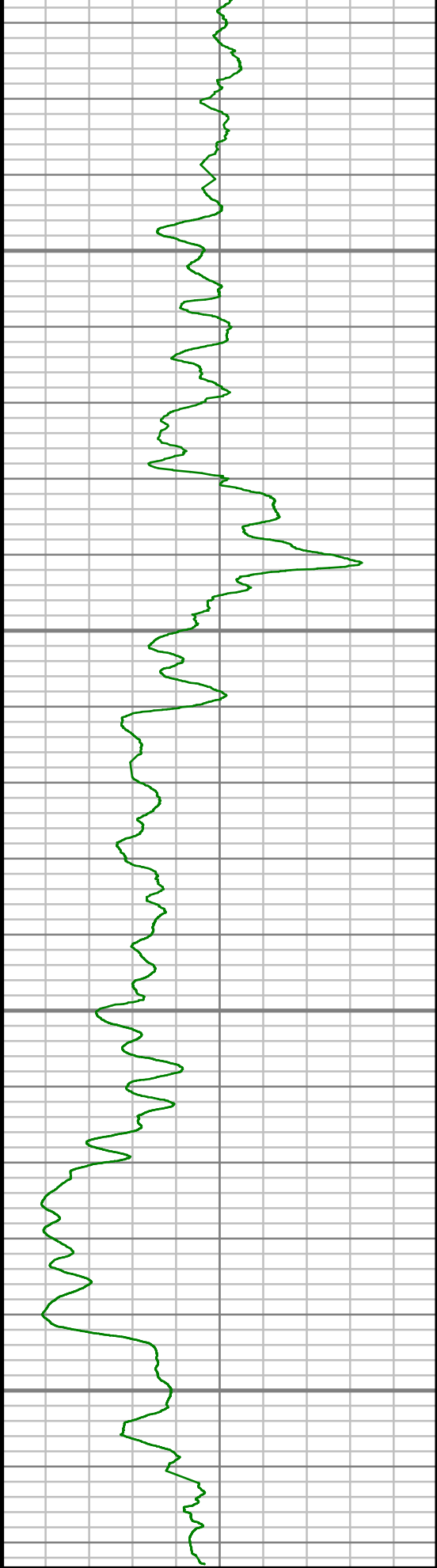
7200

7250

7300

7350





Gamma Ray (GR)

0 Unit = aapi 150

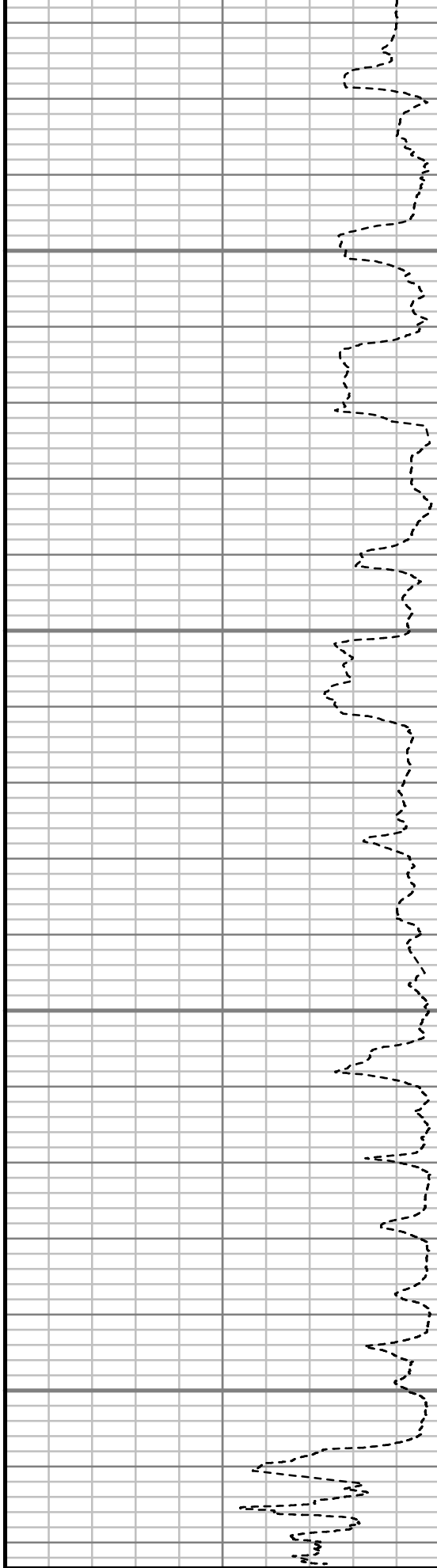
7400

7450

7500

7550

TRUE VERTIC
1.240 (ft)



Rate of Penetration (ROP)

450 Unit = ft/hr 0

Comments

--

WAL DEPTH

--

--

Survey Report

Customer Name:	ENCANA OIL AND GAS (U.S.A.) INC						
Site Name:	RODMAN BRUNTZ						
Well Name:	RODMAN BRUNTZ 2D-26H						
Survey:	RODMAN BRUNTZ 2D-26H						
Survey Date:	10/31/2013						
Magnetic Declination:	8.54 deg						
North Reference:	True North						
Calculation Method:	Minimum Curvature						
Section (VS) Ref:	0.00N (ft), 0.00E (ft), 180.00Azim (deg)						
MD ft	Inc deg	Azim deg	TVD ft	VS ft	+N/-S ft	+E/-W ft	DLS 7100ft
0.00	0.00	0.00	0.00	0.00	0.00	0.00	Invalid
341.00	0.87	354.85	340.99	-2.59	2.59	-0.23	0.26
496.00	2.51	354.62	495.91	-7.15	7.15	-0.66	1.06
682.00	4.41	349.83	681.57	-18.25	18.25	-2.30	1.03
713.00	5.04	358.96	712.46	-20.79	20.79	-2.54	3.14
806.00	5.80	1.51	805.04	-29.57	29.57	-2.49	0.87
899.00	6.51	355.92	897.51	-39.53	39.53	-2.74	0.99
992.00	8.18	358.67	989.74	-51.41	51.41	-3.27	1.84
1085.00	8.75	3.17	1081.73	-65.08	65.08	-3.03	0.94

MD ft	Inc deg	Azim deg	TVD ft	VS ft	+N/-S ft	+E/-W ft	DLS 7100ft
1178.00	8.96	358.68	1173.62	-79.39	79.39	-2.81	0.78
1264.00	8.62	359.59	1258.61	-92.53	92.53	-3.01	0.42
1357.00	9.26	9.38	1350.49	-106.89	106.89	-1.84	1.77
1450.00	9.80	11.33	1442.20	-122.02	122.02	0.93	0.68
1543.00	11.57	17.31	1533.59	-138.69	138.69	5.26	2.24
1636.00	12.23	9.88	1624.60	-157.29	157.29	9.73	1.79
1729.00	12.36	6.52	1715.47	-176.89	176.89	12.55	0.78
1822.00	12.43	3.19	1806.30	-196.77	196.77	14.24	0.77
1915.00	11.67	0.65	1897.25	-216.17	216.17	14.90	0.99
2010.00	11.60	4.89	1990.30	-235.29	235.29	15.82	0.90
2105.00	11.92	3.96	2083.31	-254.59	254.59	17.32	0.39
2200.00	11.55	1.13	2176.32	-273.88	273.88	18.18	0.72
2295.00	11.75	6.93	2269.37	-292.99	292.99	19.53	1.25
2390.00	11.04	5.73	2362.50	-311.65	311.65	21.61	0.79
2484.00	10.45	4.28	2454.85	-329.11	329.11	23.14	0.69
2580.00	9.87	1.00	2549.34	-346.02	346.02	23.94	0.86
2674.00	9.29	0.44	2642.03	-361.66	361.66	24.14	0.63
2769.00	9.19	1.37	2735.80	-376.91	376.91	24.38	0.19
2864.00	8.84	2.15	2829.62	-391.79	391.79	24.83	0.40
3054.00	11.15	16.43	3016.76	-424.00	424.00	30.57	1.77

MD ft	Inc deg	Azim deg	TVD ft	VS ft	+N/-S ft	+E/-W ft	DLS 7100ft
3243.00	10.15	13.46	3202.50	-457.72	457.72	39.61	0.60
3433.00	9.07	357.54	3389.87	-488.96	488.96	42.87	1.50
3623.00	6.75	4.15	3578.05	-515.06	515.06	43.03	1.31
3813.00	5.10	354.51	3767.04	-534.60	534.60	43.03	1.01
4003.00	2.75	30.75	3956.60	-546.93	546.93	44.56	1.74
4193.00	0.55	83.08	4146.52	-550.96	550.96	47.80	1.29
4383.00	0.56	88.60	4336.51	-551.09	551.09	49.63	0.03
4572.00	0.43	327.56	4525.51	-551.71	551.71	50.17	0.45
4762.00	0.47	305.87	4715.50	-552.76	552.76	49.15	0.09
4951.00	0.56	283.85	4904.49	-553.44	553.44	47.62	0.12
5141.00	1.02	278.65	5094.47	-553.92	553.92	45.04	0.24
5331.00	1.27	262.86	5284.44	-553.91	553.91	41.28	0.21
5521.00	0.98	12.35	5474.42	-555.24	555.24	39.55	0.97
5710.00	1.12	352.35	5663.38	-558.64	558.64	39.65	0.21
5900.00	1.26	351.95	5853.34	-562.54	562.54	39.11	0.08
6090.00	2.03	105.29	6043.30	-563.72	563.72	42.06	1.46
6280.00	0.40	12.96	6233.26	-563.49	563.49	45.46	1.10
6469.00	1.10	343.41	6422.24	-565.87	565.87	45.09	0.41
6659.00	0.80	334.91	6612.21	-568.82	568.82	44.01	0.17

MD ft	Inc deg	Azim deg	TVD ft	VS ft	+N/-S ft	+E/-W ft	DLS 7100ft
6849.00	0.10	347.26	6802.21	-570.17	570.17	43.41	0.37
6944.00	1.66	322.43	6897.19	-571.34	571.34	42.56	1.66
6975.00	1.42	263.56	6928.18	-571.65	571.65	41.90	4.93
7007.00	2.09	208.36	6960.17	-571.09	571.09	41.23	5.41
7039.00	4.54	188.52	6992.12	-569.33	569.33	40.77	8.34
7070.00	7.28	183.35	7022.95	-566.15	566.15	40.47	9.00
7102.00	10.00	179.83	7054.58	-561.35	561.35	40.36	8.65
7134.00	12.63	177.28	7085.96	-555.07	555.07	40.53	8.35
7165.00	14.43	174.86	7116.10	-547.84	547.84	41.04	6.10
7197.00	17.38	176.34	7146.87	-539.10	539.10	41.70	9.29
7229.00	20.06	176.10	7177.17	-528.85	528.85	42.38	8.40
7260.00	22.63	175.50	7206.04	-517.60	517.60	43.21	8.29
7292.00	26.49	173.69	7235.14	-504.36	504.36	44.48	12.30
7323.00	30.38	174.56	7262.40	-489.68	489.68	45.99	12.61
7355.00	34.97	175.06	7289.33	-472.48	472.48	47.54	14.38
7387.00	38.30	174.98	7315.00	-453.46	453.46	49.20	10.39
7418.00	41.92	175.65	7338.71	-433.56	433.56	50.83	11.79
7450.00	44.92	176.97	7361.95	-411.61	411.61	52.24	9.79
7482.00	46.83	179.02	7384.23	-388.66	388.66	53.04	7.54
7513.00	49.65	181.14	7404.87	-365.54	365.54	52.99	10.42

MD ft	Inc deg	Azim deg	TVD ft	VS ft	+N/-S ft	+E/-W ft	DLS 7100ft
7545.00	50.99	181.48	7425.30	-340.92	340.92	52.43	4.28
7576.00	53.55	179.46	7444.27	-316.40	316.40	52.24	9.73
7608.00	55.76	178.60	7462.78	-290.31	290.31	52.68	7.23
7640.00	59.33	178.07	7479.95	-263.32	263.32	53.47	11.23
7671.00	63.72	178.75	7494.73	-236.09	236.09	54.22	14.30
7703.00	66.36	179.83	7508.23	-207.08	207.08	54.58	8.80
7735.00	70.17	180.31	7520.08	-177.36	177.36	54.54	11.98
7766.00	73.22	179.86	7529.82	-147.94	147.94	54.50	9.94
7798.00	76.24	179.42	7538.24	-117.07	117.07	54.69	9.53
7829.00	78.96	179.02	7544.90	-86.80	86.80	55.10	8.86
7861.00	82.54	179.05	7550.04	-55.23	55.23	55.64	11.19
8025.00	90.13	178.68	7560.52	108.29	-108.29	58.88	4.64
8118.00	89.87	179.35	7560.52	201.27	-201.27	60.48	0.77
8211.00	91.04	181.40	7559.78	294.26	-294.26	59.87	2.54
8303.00	90.60	179.23	7558.46	386.24	-386.24	59.37	2.40
8396.00	90.03	180.93	7557.95	479.24	-479.24	59.24	1.92
8489.00	90.54	180.83	7557.48	572.23	-572.23	57.82	0.55
8582.00	91.07	180.82	7556.18	665.21	-665.21	56.48	0.58
8675.00	89.09	182.40	7556.04	758.16	-758.16	53.86	2.72

MD ft	Inc deg	Azim deg	TVD ft	VS ft	+N/-S ft	+E/-W ft	DLS 7100ft
8768.00	89.26	181.30	7557.37	851.10	-851.10	50.86	1.19
8861.00	89.20	181.06	7558.63	944.08	-944.08	48.94	0.28
8954.00	90.54	181.35	7558.84	1037.05	-1037.05	46.99	1.48
9047.00	92.08	180.82	7556.72	1130.01	-1130.01	45.23	1.76
9140.00	90.47	180.22	7554.65	1222.98	-1222.98	44.39	1.85
9233.00	90.30	179.08	7554.02	1315.97	-1315.97	44.96	1.24
9326.00	90.00	177.38	7553.78	1408.92	-1408.92	47.83	1.85
9419.00	88.69	178.14	7554.84	1501.84	-1501.84	51.47	1.63
9514.00	88.69	180.70	7557.01	1596.81	-1596.81	52.43	2.70
9608.00	89.66	182.41	7558.36	1690.76	-1690.76	49.88	2.10
9703.00	89.87	181.67	7558.75	1785.70	-1785.70	46.49	0.81
9798.00	90.30	180.78	7558.61	1880.67	-1880.67	44.46	1.04
9893.00	90.44	179.97	7558.00	1975.67	-1975.67	43.83	0.86
9988.00	89.33	180.08	7558.20	2070.67	-2070.67	43.79	1.17
10083.00	89.87	180.60	7558.86	2165.66	-2165.66	43.24	0.79
10178.00	89.23	180.34	7559.61	2260.66	-2260.66	42.47	0.72
10273.00	87.75	179.98	7562.12	2355.62	-2355.62	42.20	1.60
10368.00	88.56	180.00	7565.18	2450.57	-2450.57	42.22	0.85
10463.00	88.86	179.57	7567.32	2545.54	-2545.54	42.58	0.56
10558.00	89.33	178.61	7568.82	2640.52	-2640.52	44.09	1.12

MD ft	Inc deg	Azim deg	TVD ft	VS ft	+N/-S ft	+E/-W ft	DLS 7100ft
10653.00	89.53	177.95	7569.76	2735.47	-2735.47	46.94	0.72
10747.00	89.23	179.76	7570.78	2829.44	-2829.44	48.81	1.94
10842.00	89.77	179.77	7571.62	2924.44	-2924.44	49.20	0.57
10937.00	90.10	178.79	7571.73	3019.43	-3019.43	50.39	1.09
11032.00	89.26	180.80	7572.26	3114.42	-3114.42	50.73	2.29
11127.00	90.03	181.29	7572.84	3209.40	-3209.40	49.00	0.96
11222.00	90.84	181.65	7572.12	3304.37	-3304.37	46.56	0.93
11317.00	91.11	181.29	7570.50	3399.32	-3399.32	44.12	0.48
11412.00	91.41	180.40	7568.42	3494.29	-3494.29	42.72	0.99
11506.00	91.85	180.24	7565.75	3588.25	-3588.25	42.20	0.49
11601.00	91.14	178.58	7563.27	3683.21	-3683.21	43.18	1.90
11696.00	92.42	178.39	7560.32	3778.13	-3778.13	45.69	1.36
11791.00	89.33	179.10	7558.88	3873.08	-3873.08	47.76	3.34
11886.00	89.43	180.63	7559.91	3968.07	-3968.07	47.99	1.61
11981.00	89.29	181.21	7560.96	4063.05	-4063.05	46.47	0.63
12076.00	89.16	180.52	7562.24	4158.03	-4158.03	45.04	0.74
12170.00	86.27	180.38	7565.99	4251.95	-4251.95	44.30	3.08
12265.00	88.76	180.73	7570.12	4346.84	-4346.84	43.38	2.65
12360.00	90.20	182.61	7570.98	4441.79	-4441.79	40.61	2.49

MD ft	Inc deg	Azim deg	TVD ft	VS ft	+N/-S ft	+E/-W ft	DLS 7100ft
12455.00	91.21	182.97	7569.81	4536.67	-4536.67	35.98	1.13
12550.00	91.68	181.73	7567.42	4631.56	-4631.56	32.09	1.40
12645.00	92.59	181.77	7563.89	4726.45	-4726.45	29.19	0.96
12740.00	90.77	179.90	7561.10	4821.39	-4821.39	27.81	2.75
12834.00	87.34	179.29	7562.65	4915.36	-4915.36	28.48	3.70
12929.00	88.06	179.03	7566.46	5010.27	-5010.27	29.88	0.80
13024.00	89.26	180.84	7568.68	5105.24	-5105.24	29.98	2.29
13119.00	89.33	180.63	7569.85	5200.23	-5200.23	28.76	0.24
13214.00	89.87	180.17	7570.52	5295.22	-5295.22	28.10	0.74
13309.00	90.27	181.46	7570.41	5390.21	-5390.21	26.74	1.42
13404.00	90.67	180.80	7569.63	5485.19	-5485.19	24.87	0.82
13498.00	89.66	182.19	7569.36	5579.15	-5579.15	22.42	1.82
13593.00	90.97	183.84	7568.83	5674.01	-5674.01	17.43	2.22
13688.00	91.54	184.20	7566.74	5768.75	-5768.75	10.77	0.71
13783.00	90.91	183.89	7564.71	5863.50	-5863.50	4.07	0.75
13878.00	91.31	183.65	7562.88	5958.27	-5958.27	-2.18	0.49
13973.00	90.60	182.58	7561.29	6053.12	-6053.12	-7.34	1.35
14068.00	89.30	183.73	7561.38	6147.97	-6147.97	-12.57	1.83
14163.00	89.90	182.99	7562.04	6242.80	-6242.80	-18.13	1.01
14258.00	90.84	182.51	7561.43	6337.69	-6337.69	-22.68	1.11

MD	Inc	Azim	TVD	VS	+N/-S	+E/-W	DLS
ft	deg	deg	ft	ft	ft	ft	7100ft
14353.00	89.70	183.64	7560.98	6432.55	-6432.55	-27.78	1.69
14447.00	91.21	183.12	7560.24	6526.38	-6526.38	-33.31	1.70
14542.00	92.22	181.68	7557.40	6621.25	-6621.25	-37.29	1.84
14637.00	92.12	180.74	7553.81	6716.16	-6716.16	-39.30	1.00

MD ft	Inc deg	Azim deg	TVD ft	VS ft	+N/-S ft	+E/-W ft	DLS 7100ft

5" = 100' FEET TVD