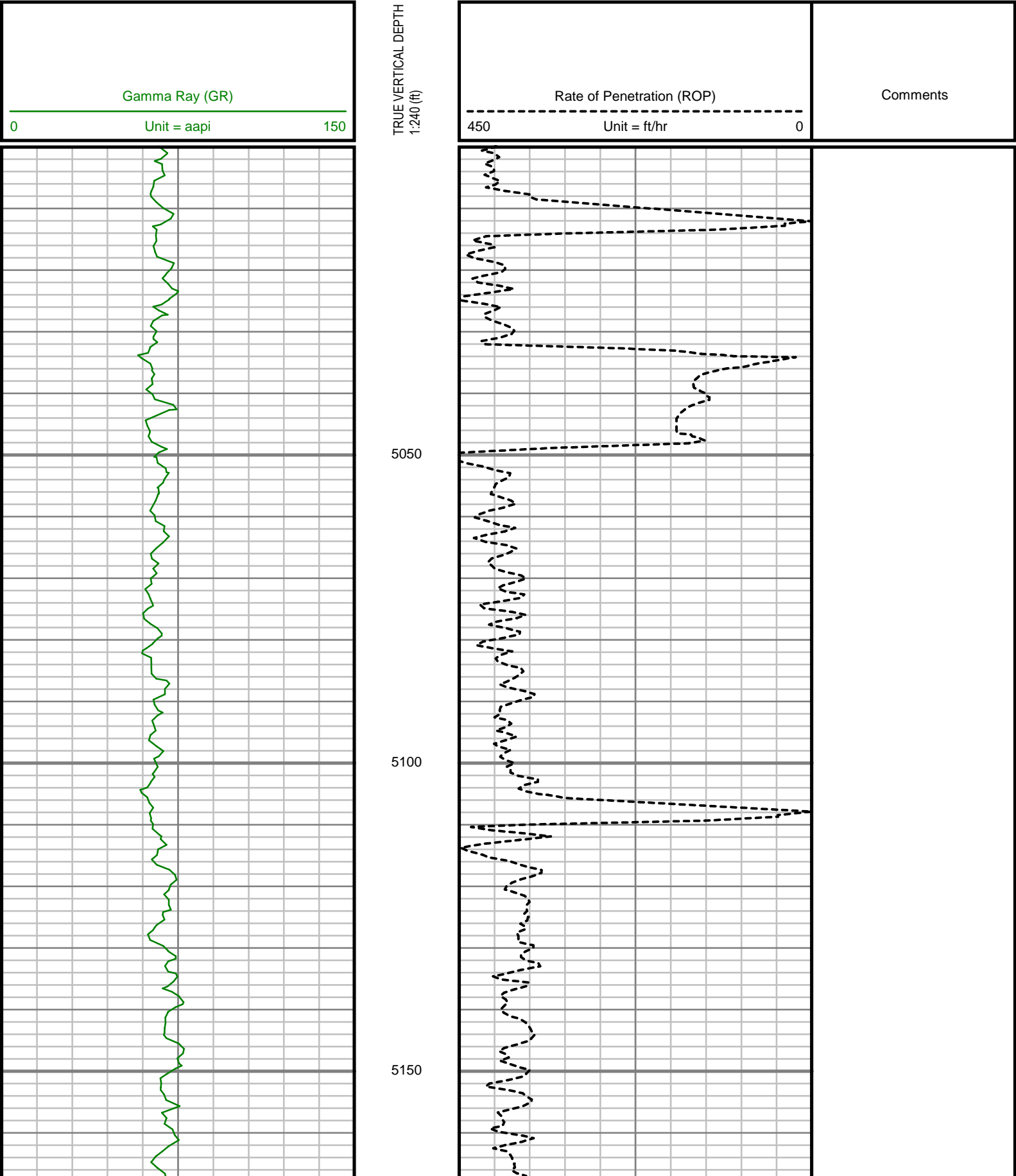


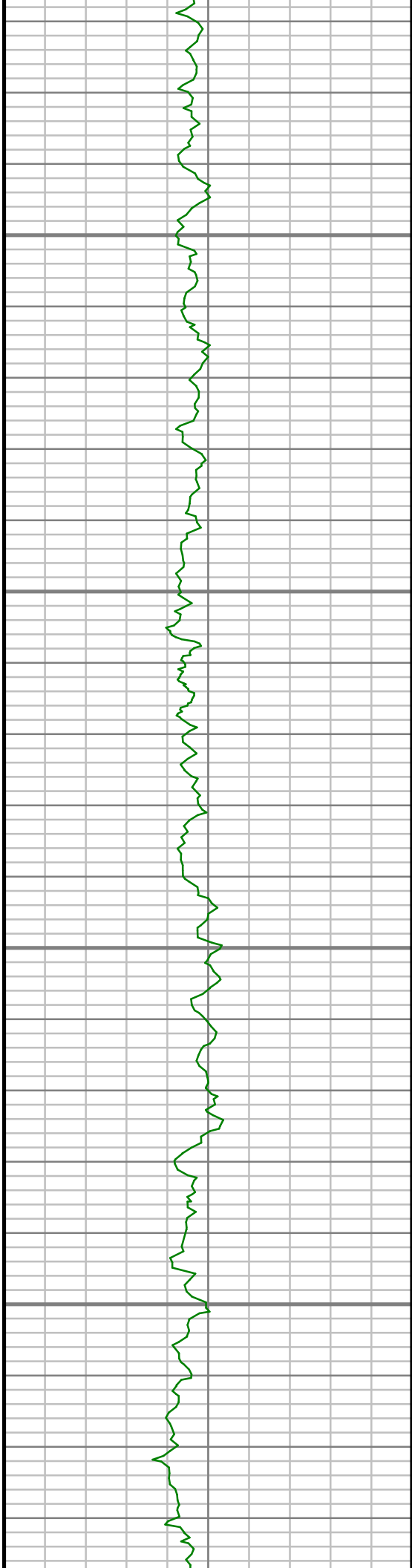
5" = 100' FEET TVD

COMPANY : ENCANA OIL AND GAS (U.S.A.) INC. WELL : RODMAN BRUNTZ 2C-26H FIELD : WATTENBURG COUNTY : WELD STATE : COLORADO COUNTRY : U.S.A. UWI : 05-123-37760										COMPANY : ENCANA OIL AND GAS (U.S.A.) INC. WELL : RODMAN BRUNTZ 2C-26H FIELD : WATTENBURG COUNTY : WELD STATE : COLORADO COUNTRY : U.S.A. UWI : 05-123-37760																			
DEPTH REF. : RKB REF. HEIGHT : 13.000 ft GROUND LEVEL : 5097.000 ft										WELL LOCATION LAT:40°6'53.640"N LONG:104°44'47.976"W N:1285597.12 ft E:3210692.79 ft SEC:26 TWP:2N RANGE:66W										OTHER SERVICES DIRECTIONAL ROP									
BOREHOLE RECORD										DEVIATION RECORD																			
HOLE SIZE in		FROM ft		TO ft		INCLINATION deg		FROM ft		TO ft																			
12.25		0		1268		0 - 7		0		6810																			
8.75		1268		7831		7 - 83		6810		7831																			
6.125		7831		14322		83 - 93		7831		14322																			
CASING RECORD																													
CASING SIZE in		FROM ft		TO ft																									
9.625		0		1258																									
7		0		7821																									
										DRILLING CO.: ENSIGN RIG: 124																			
										LMD UNIT NO.: C-70 DISTRICT: CASPER																			
										SPUD DATE: 11/17/2013																			
										LMD START DATE: 11/19/2013 DEPTH: 5000 ft																			
										LMD END DATE: 12/02/2013 DEPTH: 14322 ft																			
										TOTAL DEPTH: 14322 ft																			

All interpretations are opinions based on inferences from electrical or other measurements and we cannot, and do not guarantee the accuracy or correctness of any interpretations, and we shall not, except in the case of gross or willful negligence on our part, be liable or responsible for any loss, costs, damages or expenses incurred or sustained by anyone resulting from any interpretation made by any of our officers, agents or employees. These interpretations are also subject to our general terms and conditions as set out in our current price schedule.

ENCANA OIL AND GAS (U.S.A.) INC.
RODMAN BRUNTZ 2C-26H
WATTENBURG FIELD
WELD COUNTY, COLORADO
05-123-37760



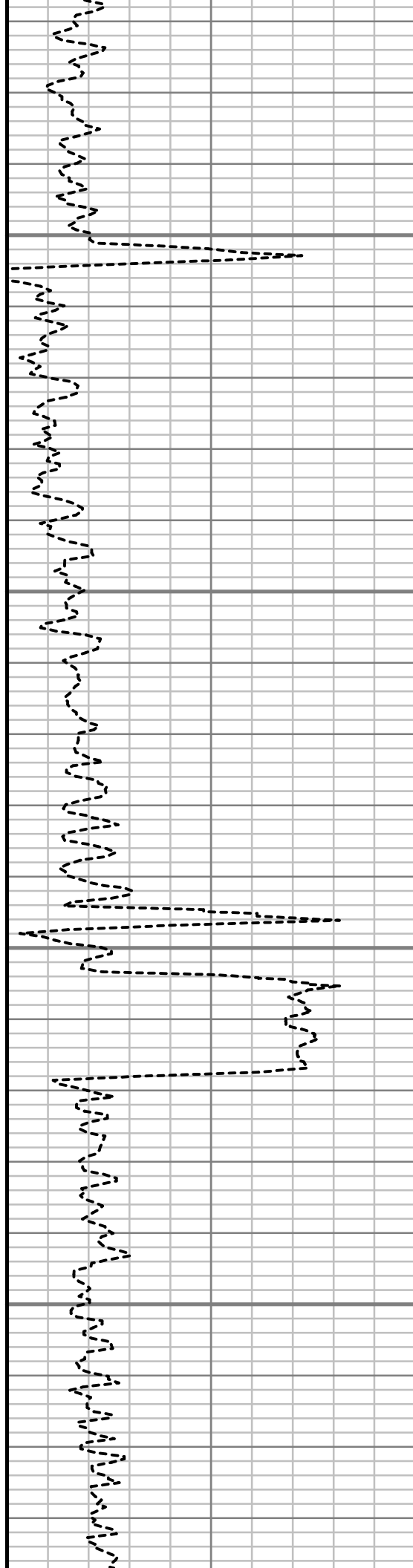


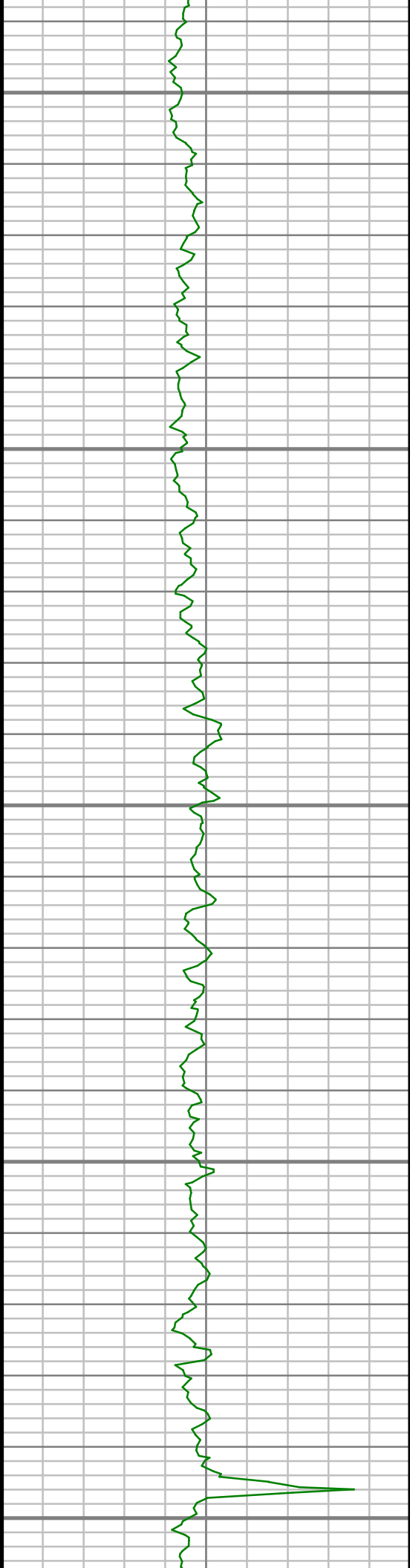
5200

5250

5300

5350





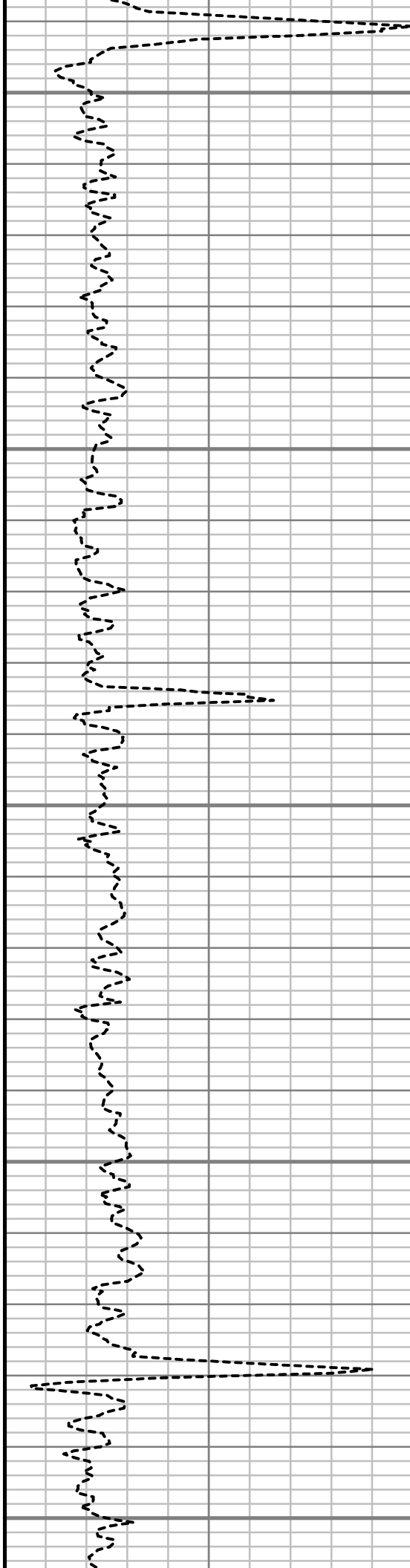
5400

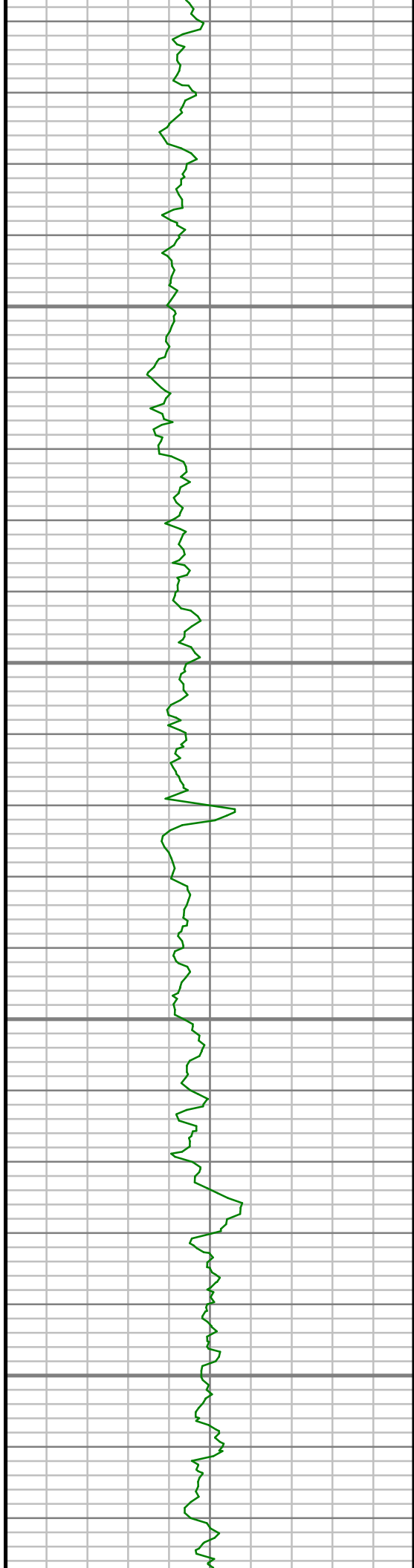
5450

5500

5550

5600



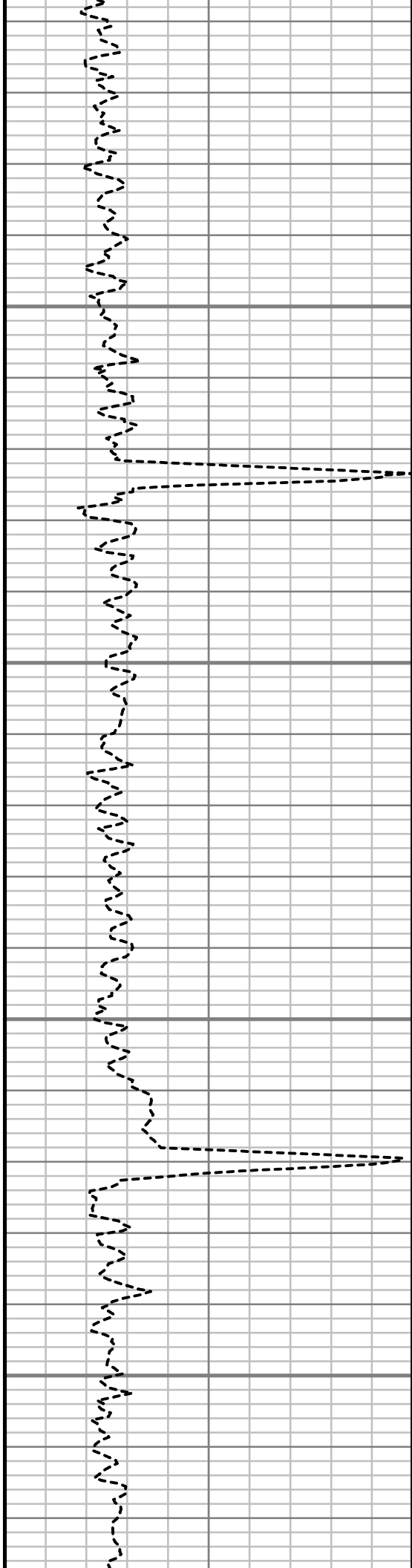


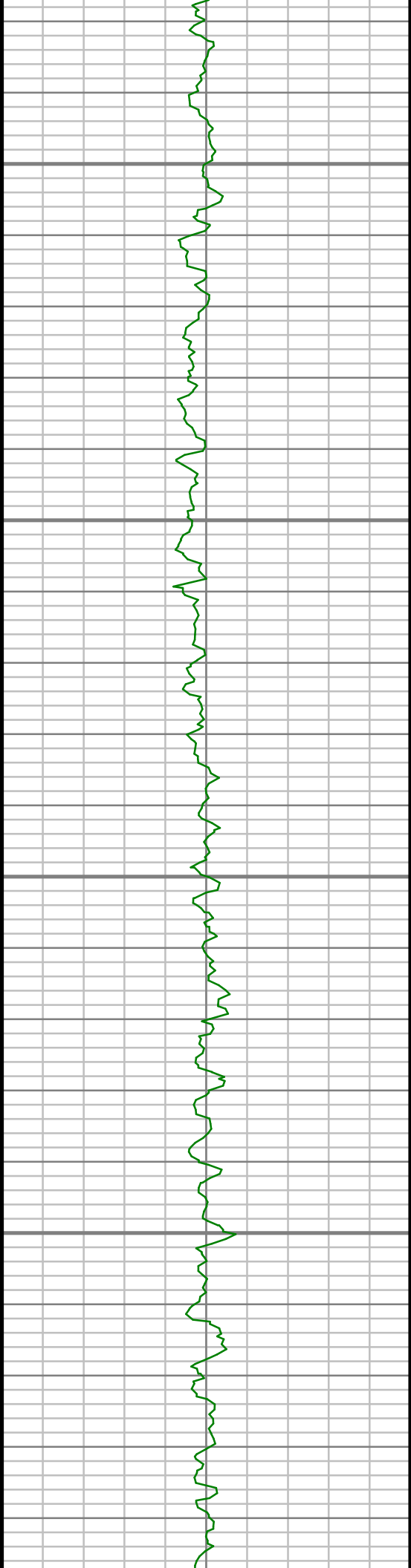
5650

5700

5750

5800



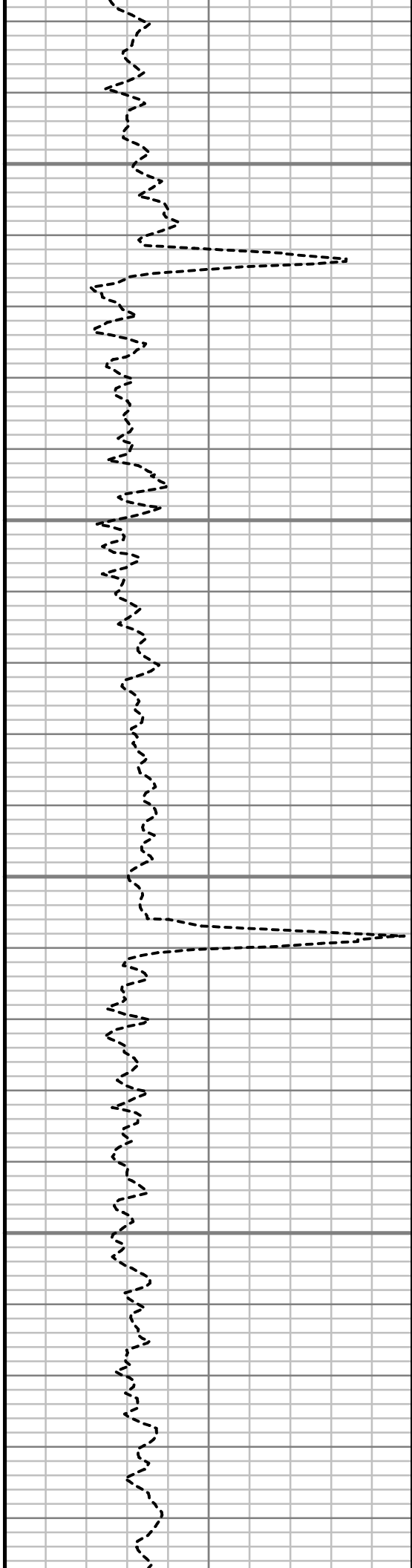


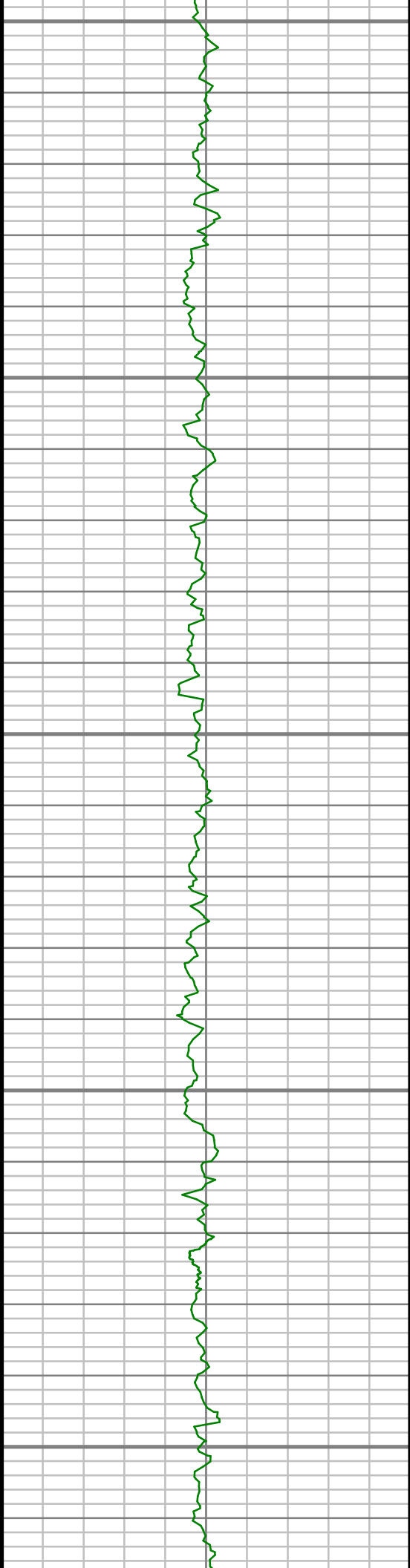
5850

5900

5950

6000





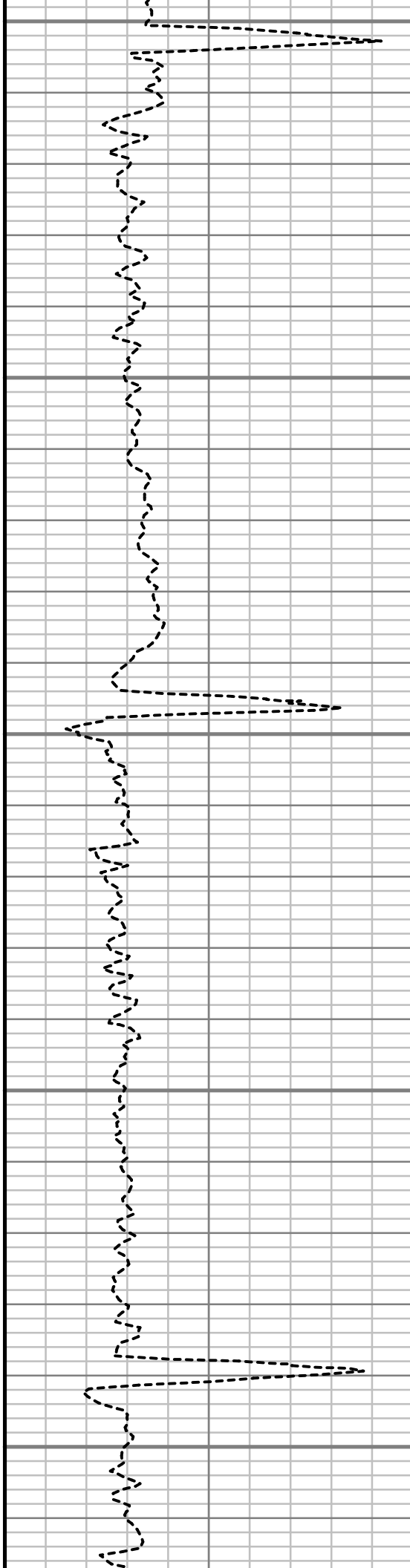
6050

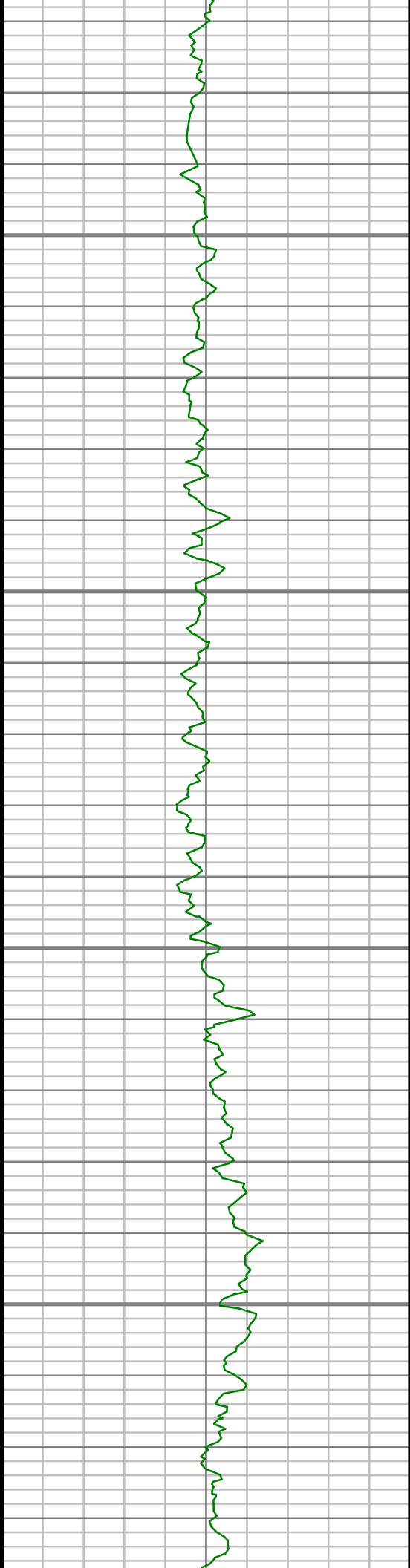
6100

6150

6200

6250



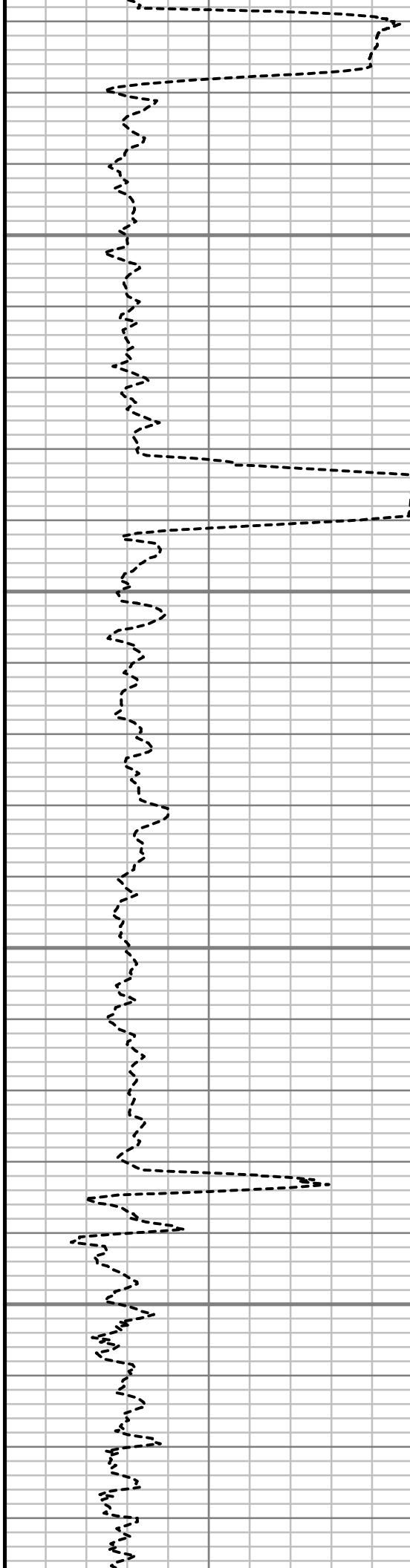


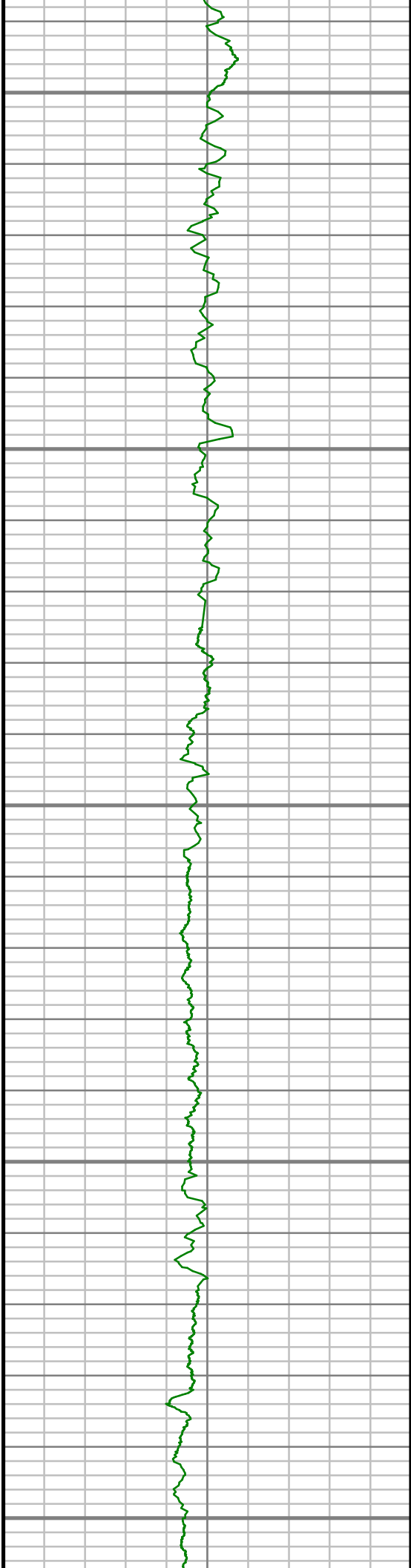
6300

6350

6400

6450





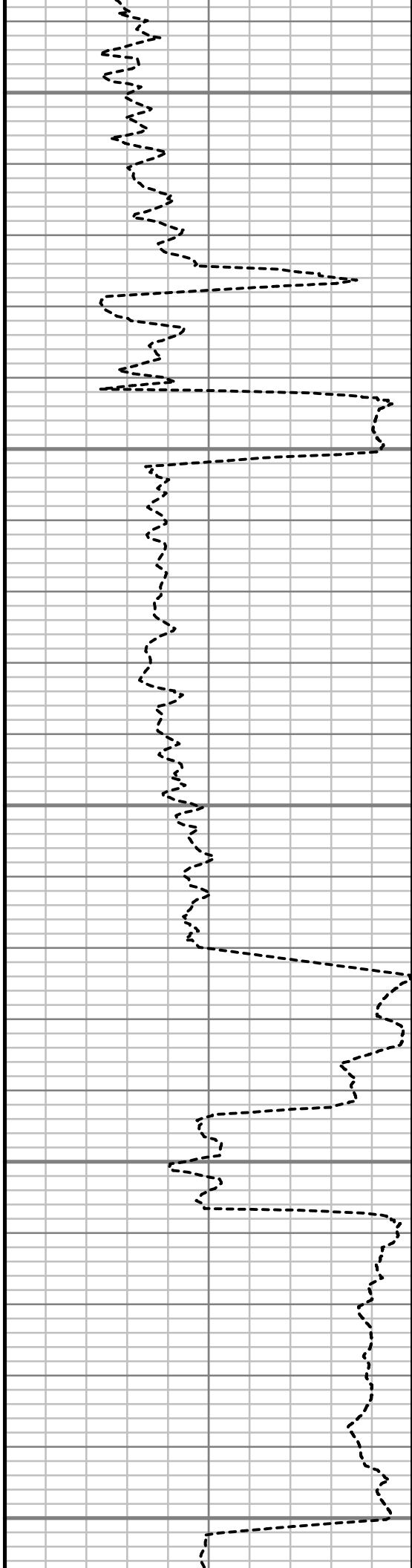
6500

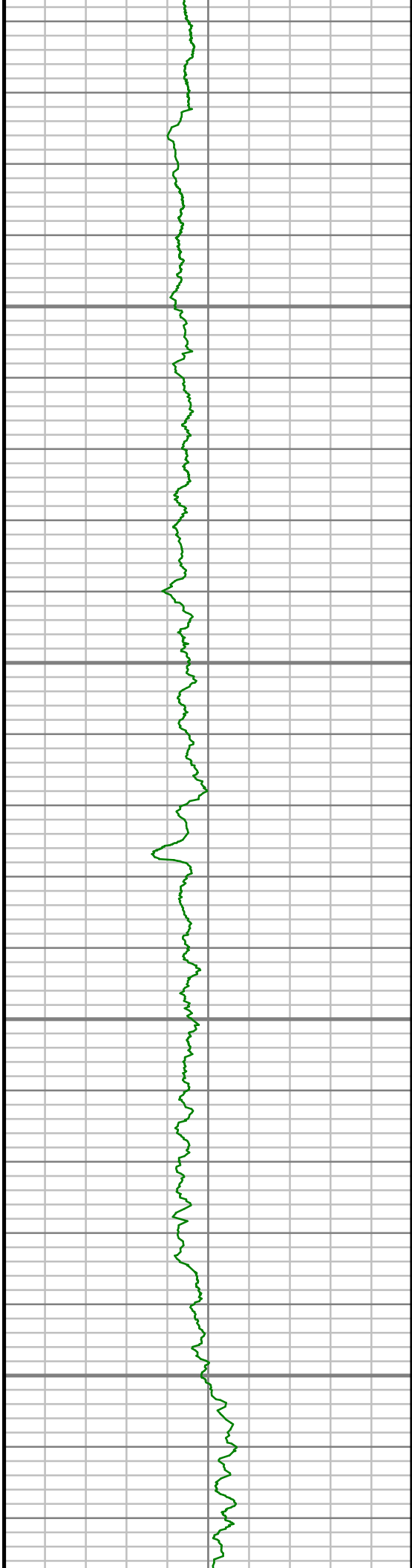
6550

6600

6650

6700



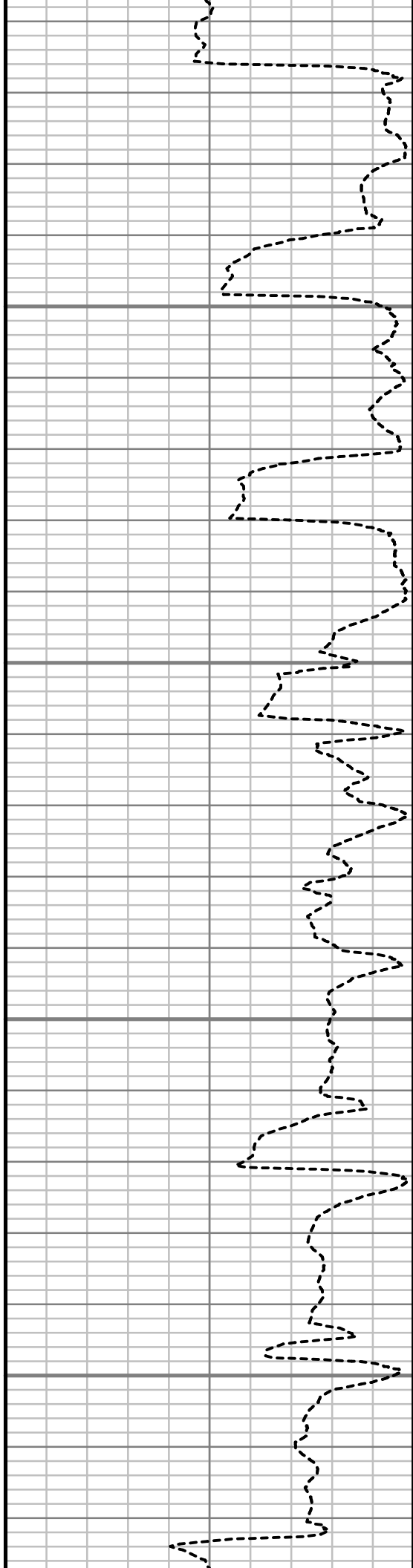


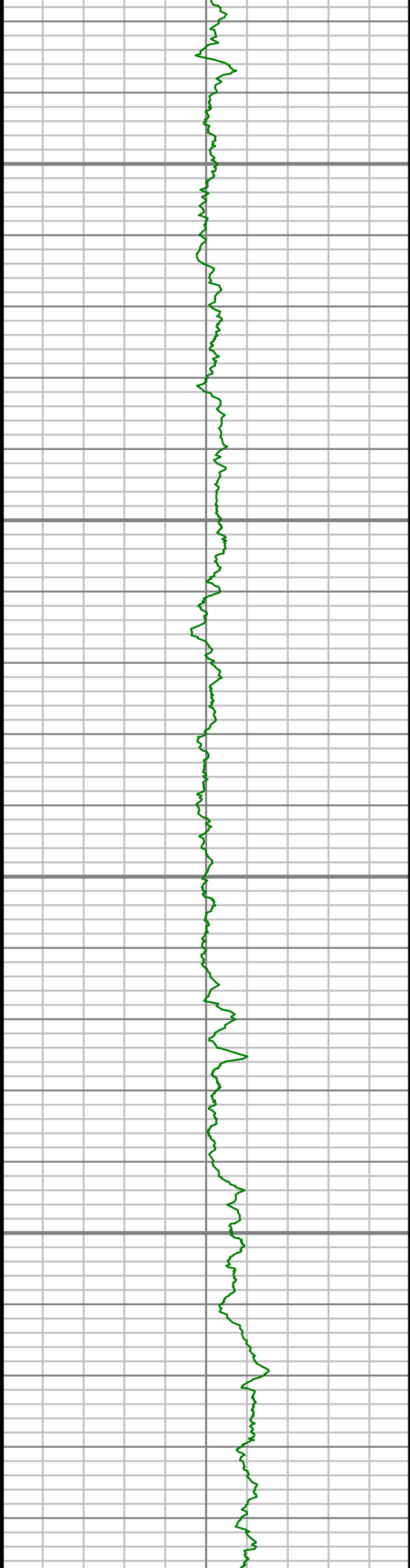
6750

6800

6850

6900



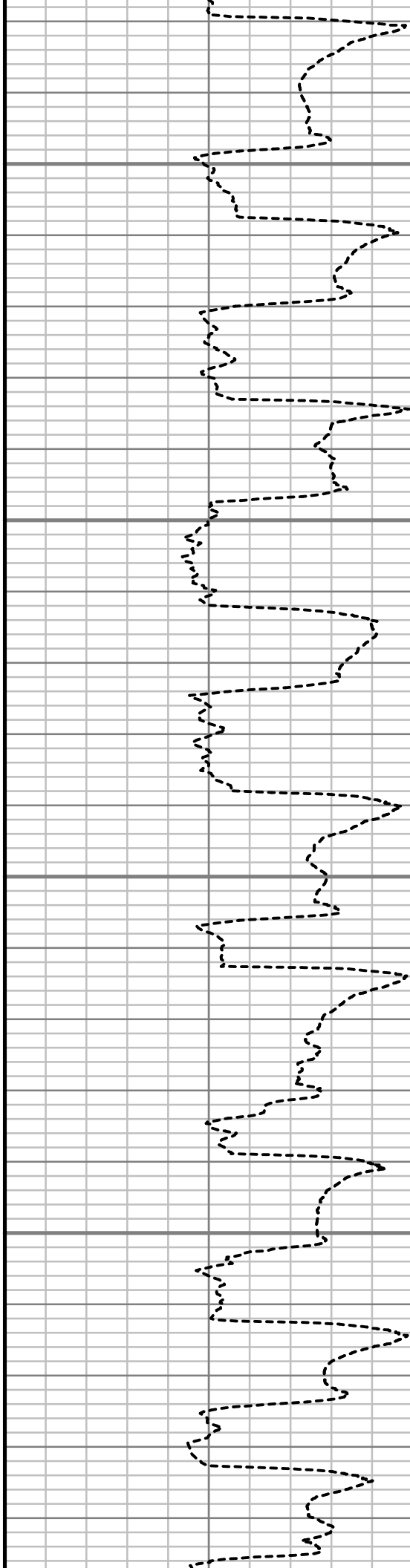


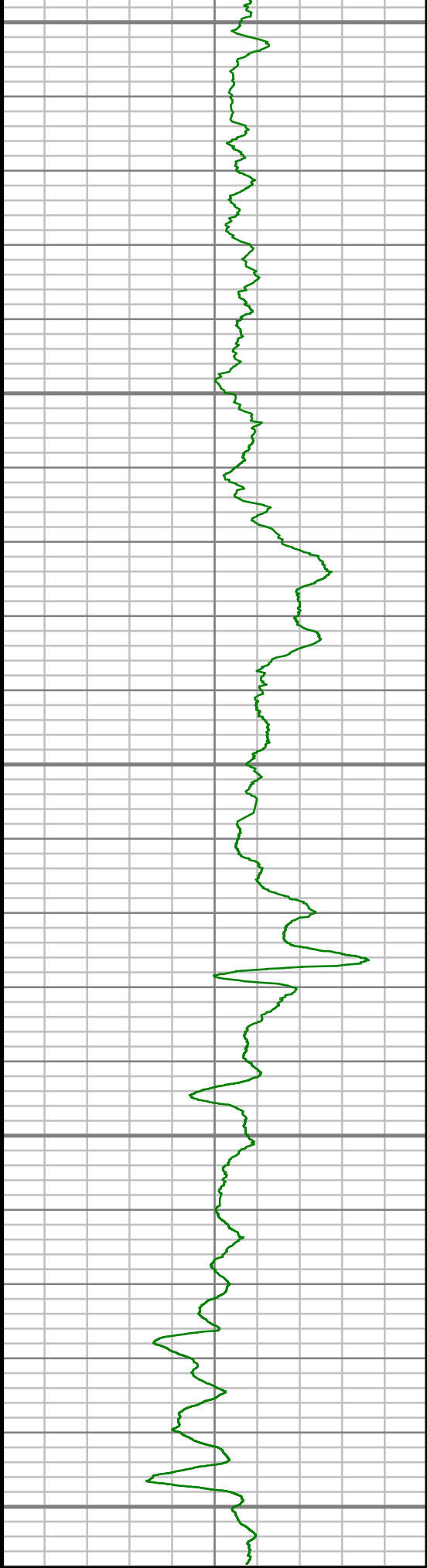
6950

7000

7050

7100





7150

7200

7250

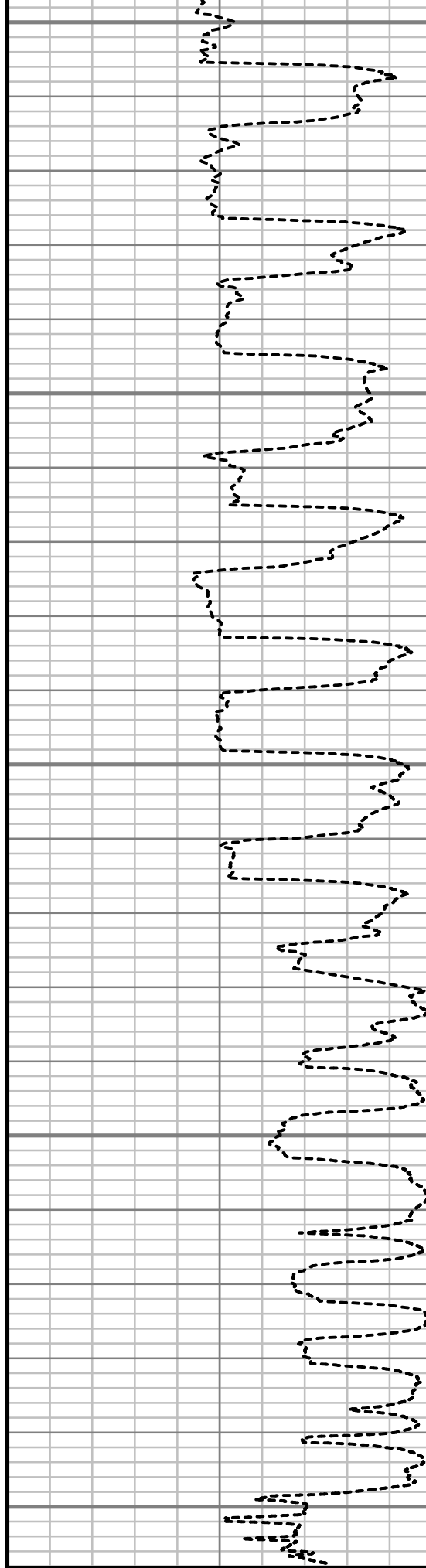
7300

7350

Gamma Ray (GR)

0 Unit = aapi 150

TRUE V
1.240 (ft)



Rate of Penetration (ROP)

450 Unit = ft/hr 0

Comments

[illegible]

Survey Report

Customer Name:	ENCANA OIL AND GAS (U.S.A.) INC.						
Site Name:	RODMAN BRUNTZ						
Well Name:	RODMAN BRUNTZ 2C-26H						
Survey:	RODMAN BRUNTZ 2C-26H						
Survey Date:	11/17/2013						
Magnetic Declination:	8.54 deg						
North Reference:	True North						
Calculation Method:	Minimum Curvature						
Section (VS) Ref:	0.00N (ft), 0.00E (ft), 180.00Azim (deg)						
MD ft	Inc deg	Azim deg	TVD ft	VS ft	+N/-S ft	+E/-W ft	DLS 7100ft
0.00	0.00	0.00	0.00	0.00	0.00	0.00	Invalid
466.00	0.41	174.91	466.00	1.64	-1.64	0.15	0.09
590.00	0.31	190.93	589.99	2.41	-2.41	0.12	0.11
713.00	0.12	170.54	712.99	2.86	-2.86	0.08	0.16
806.00	0.47	184.86	805.99	3.34	-3.34	0.06	0.38
899.00	0.38	202.46	898.99	4.00	-4.00	-0.09	0.17
992.00	0.81	191.23	991.98	4.94	-4.94	-0.33	0.48
1085.00	2.00	258.02	1084.96	5.92	-5.92	-2.05	1.97
1178.00	2.74	299.44	1177.88	5.17	-5.17	-5.57	1.95

MD ft	Inc deg	Azim deg	TVD ft	VS ft	+N/-S ft	+E/-W ft	DLS 7100ft
1205.00	2.45	291.24	1204.86	4.64	-4.64	-6.67	1.74
1296.00	2.62	296.64	1295.77	3.00	-3.00	-10.35	0.32
1358.00	2.68	295.50	1357.70	1.75	-1.75	-12.92	0.12
1451.00	3.87	315.78	1450.55	-1.44	1.44	-17.07	1.77
1544.00	4.30	317.67	1543.32	-6.27	6.27	-21.60	0.48
1637.00	4.10	318.06	1636.07	-11.32	11.32	-26.17	0.22
1730.00	6.77	319.33	1728.64	-17.95	17.95	-31.97	2.88
1823.00	8.60	322.11	1820.80	-27.60	27.60	-39.81	2.00
2011.00	8.35	315.87	2006.75	-48.48	48.48	-57.94	0.51
2105.00	10.03	312.77	2099.54	-58.93	58.93	-68.70	1.87
2200.00	11.26	312.10	2192.91	-70.77	70.77	-81.66	1.30
2295.00	11.50	310.53	2286.04	-83.14	83.14	-95.74	0.41
2390.00	11.97	308.97	2379.05	-95.49	95.49	-110.60	0.60
2485.00	13.17	309.46	2471.78	-108.57	108.57	-126.61	1.27
2580.00	13.16	307.62	2564.28	-122.05	122.05	-143.53	0.44
2675.00	14.99	307.71	2656.42	-136.17	136.17	-161.82	1.92
2770.00	14.36	308.23	2748.32	-150.97	150.97	-180.79	0.68
2865.00	15.15	310.52	2840.19	-166.33	166.33	-199.48	1.03
2960.00	14.88	312.33	2931.95	-182.61	182.61	-217.93	0.57
3055.00	15.10	309.75	3023.72	-198.73	198.73	-236.46	0.74

MD ft	Inc deg	Azim deg	TVD ft	VS ft	+N/-S ft	+E/-W ft	DLS 7100ft
3150.00	16.20	309.11	3115.19	-215.00	215.00	-256.26	1.17
3245.00	15.46	307.23	3206.59	-231.02	231.02	-276.62	0.95
3339.00	15.68	312.25	3297.15	-247.15	247.15	-296.01	1.45
3434.00	15.09	317.63	3388.74	-264.92	264.92	-313.85	1.63
3529.00	16.31	316.69	3480.20	-283.76	283.76	-331.33	1.31
3624.00	15.98	313.28	3571.45	-302.43	302.43	-350.00	1.06
3719.00	14.74	314.46	3663.06	-319.86	319.86	-368.14	1.35
3814.00	15.51	313.32	3754.77	-337.04	337.04	-386.00	0.87
3909.00	14.70	311.17	3846.49	-353.69	353.69	-404.32	1.03
4003.00	16.35	308.59	3937.06	-369.80	369.80	-423.64	1.91
4098.00	16.88	305.69	4028.09	-386.18	386.18	-445.30	1.03
4193.00	15.51	303.93	4119.32	-401.32	401.32	-467.04	1.53
4288.00	13.33	303.46	4211.32	-414.45	414.45	-486.72	2.30
4382.00	14.76	311.89	4302.52	-428.42	428.42	-504.67	2.65
4477.00	15.64	315.08	4394.20	-445.57	445.57	-522.72	1.28
4572.00	15.29	316.50	4485.75	-463.72	463.72	-540.39	0.54
4667.00	13.31	322.07	4577.81	-481.44	481.44	-555.74	2.54
4762.00	11.26	320.24	4670.63	-497.20	497.20	-568.40	2.20
4857.00	9.60	322.58	4764.06	-510.62	510.62	-579.14	1.81

MD ft	Inc deg	Azim deg	TVD ft	VS ft	+N/-S ft	+E/-W ft	DLS 7100ft
4952.00	7.79	319.96	4857.96	-521.84	521.84	-588.10	1.94
5046.00	5.79	305.17	4951.30	-529.46	529.46	-596.08	2.81
5141.00	3.26	311.71	5046.00	-534.02	534.02	-602.02	2.71
5236.00	2.29	322.94	5140.89	-537.34	537.34	-605.19	1.17
5331.00	1.89	323.02	5235.82	-540.11	540.11	-607.27	0.42
5425.00	2.73	279.47	5329.75	-541.71	541.71	-610.42	2.01
5520.00	2.89	275.70	5424.64	-542.32	542.32	-615.04	0.26
5615.00	2.38	274.29	5519.54	-542.71	542.71	-619.39	0.55
5710.00	1.93	272.75	5614.47	-542.93	542.93	-622.95	0.47
5900.00	1.28	269.78	5804.40	-543.08	543.08	-628.26	0.35
5995.00	0.95	248.97	5899.38	-542.79	542.79	-630.06	0.54
6090.00	1.01	277.02	5994.37	-542.61	542.61	-631.62	0.50
6279.00	0.98	310.00	6183.34	-543.85	543.85	-634.51	0.30
6374.00	0.32	1.32	6278.33	-544.64	544.64	-635.13	0.86
6469.00	0.52	17.68	6373.33	-545.32	545.32	-634.99	0.25
6564.00	0.77	337.94	6468.32	-546.32	546.32	-635.10	0.52
6659.00	0.18	251.61	6563.32	-546.86	546.86	-635.48	0.82
6690.00	0.35	258.65	6594.32	-546.83	546.83	-635.62	0.54
6722.00	1.05	202.40	6626.32	-546.54	546.54	-635.83	2.83
6753.00	2.59	172.72	6657.30	-545.58	545.58	-635.85	5.67

MD ft	Inc deg	Azim deg	TVD ft	VS ft	+N/-S ft	+E/-W ft	DLS 7100ft
6785.00	5.64	163.66	6689.22	-543.35	543.35	-635.31	9.72
6817.00	7.87	165.31	6720.99	-539.72	539.72	-634.31	6.99
6848.00	10.07	170.44	6751.61	-534.99	534.99	-633.32	7.54
6880.00	12.00	170.85	6783.02	-528.95	528.95	-632.33	6.03
6912.00	13.74	169.76	6814.21	-521.92	521.92	-631.12	5.49
6943.00	15.60	171.90	6844.20	-514.18	514.18	-629.88	6.23
6975.00	18.79	178.01	6874.77	-504.76	504.76	-629.10	11.47
7007.00	22.81	179.20	6904.68	-493.40	493.40	-628.83	12.60
7038.00	26.49	178.90	6932.85	-480.48	480.48	-628.62	11.88
7070.00	29.43	178.69	6961.11	-465.48	465.48	-628.30	9.21
7101.00	30.96	179.32	6987.91	-449.90	449.90	-628.03	5.02
7133.00	32.02	179.58	7015.19	-433.18	433.18	-627.87	3.37
7165.00	33.92	178.84	7042.04	-415.77	415.77	-627.63	6.07
7196.00	37.62	179.95	7067.18	-397.65	397.65	-627.44	12.11
7228.00	40.82	179.97	7091.97	-377.42	377.42	-627.43	9.98
7259.00	44.00	179.66	7114.86	-356.52	356.52	-627.36	10.30
7291.00	46.67	179.05	7137.35	-333.76	333.76	-627.10	8.44
7323.00	48.45	179.69	7158.95	-310.15	310.15	-626.84	5.75
7354.00	50.15	180.26	7179.16	-286.65	286.65	-626.83	5.66

MD ft	Inc deg	Azim deg	TVD ft	VS ft	+N/-S ft	+E/-W ft	DLS 7100ft
7386.00	52.61	180.02	7199.13	-261.65	261.65	-626.90	7.73
7417.00	54.94	181.26	7217.45	-236.64	236.64	-627.18	8.18
7449.00	56.59	181.80	7235.45	-210.20	210.20	-627.89	5.34
7480.00	59.08	181.50	7251.95	-183.97	183.97	-628.64	8.07
7512.00	62.18	180.95	7267.64	-156.09	156.09	-629.24	9.80
7544.00	65.57	181.74	7281.73	-127.37	127.37	-629.91	10.81
7575.00	67.89	181.78	7293.98	-98.91	98.91	-630.79	7.51
7607.00	69.84	181.18	7305.51	-69.07	69.07	-631.56	6.33
7638.00	73.03	180.46	7315.38	-39.69	39.69	-631.98	10.50
7670.00	74.95	179.96	7324.21	-8.94	8.94	-632.09	6.19
7702.00	76.98	179.33	7331.97	22.11	-22.11	-631.90	6.63
7734.00	80.27	179.55	7338.28	53.47	-53.47	-631.59	10.33
7771.00	83.43	179.28	7343.52	90.09	-90.09	-631.22	8.56
7843.00	89.06	177.84	7348.24	161.88	-161.88	-629.41	8.07
7936.00	88.08	179.69	7350.56	254.83	-254.83	-627.40	2.26
8029.00	88.22	179.79	7353.56	347.78	-347.78	-626.98	0.18
8122.00	89.09	180.16	7355.74	440.75	-440.75	-626.94	1.02
8214.00	88.89	179.78	7357.36	532.74	-532.74	-626.89	0.46
8307.00	92.08	179.59	7356.57	625.72	-625.72	-626.38	3.44
8400.00	92.09	179.33	7353.19	718.65	-718.65	-625.50	0.27

MD ft	Inc deg	Azim deg	TVD ft	VS ft	+N/-S ft	+E/-W ft	DLS 7100ft
8493.00	93.05	179.89	7349.02	811.56	-811.56	-624.86	1.20
8586.00	90.74	180.19	7345.94	904.50	-904.50	-624.93	2.51
8679.00	90.64	179.28	7344.82	997.49	-997.49	-624.50	0.98
8772.00	89.97	180.75	7344.33	1090.49	-1090.49	-624.53	1.73
8865.00	90.54	179.99	7343.92	1183.48	-1183.48	-625.13	1.02
8957.00	88.42	180.22	7344.76	1275.47	-1275.47	-625.30	2.31
9050.00	89.56	182.14	7346.39	1368.43	-1368.43	-627.21	2.40
9143.00	89.09	181.24	7347.48	1461.39	-1461.39	-629.95	1.10
9236.00	88.79	180.70	7349.20	1554.36	-1554.36	-631.52	0.66
9329.00	88.18	180.85	7351.65	1647.31	-1647.31	-632.78	0.68
9422.00	89.39	180.93	7353.62	1740.28	-1740.28	-634.23	1.31
9517.00	91.14	180.93	7353.17	1835.26	-1835.26	-635.77	1.84
9612.00	89.97	179.86	7352.26	1930.25	-1930.25	-636.43	1.67
9707.00	91.41	180.85	7351.11	2025.24	-2025.24	-637.02	1.84
9802.00	91.18	180.74	7348.97	2120.21	-2120.21	-638.34	0.27
9896.00	91.41	179.06	7346.85	2214.18	-2214.18	-638.18	1.81
9991.00	89.93	178.56	7345.73	2309.15	-2309.15	-636.21	1.64
10086.00	90.30	178.66	7345.54	2404.12	-2404.12	-633.91	0.40
10181.00	90.27	180.06	7345.06	2499.11	-2499.11	-632.85	1.48

MD ft	Inc deg	Azim deg	TVD ft	VS ft	+N/-S ft	+E/-W ft	DLS 7100ft
10276.00	88.99	180.76	7345.68	2594.11	-2594.11	-633.53	1.53
10371.00	89.46	179.90	7346.96	2689.09	-2689.09	-634.08	1.04
10466.00	90.10	178.45	7347.33	2784.08	-2784.08	-632.71	1.66
10560.00	90.13	179.51	7347.13	2878.06	-2878.06	-631.04	1.13
10655.00	90.64	179.17	7346.49	2973.06	-2973.06	-629.94	0.64
10750.00	89.03	180.04	7346.77	3068.05	-3068.05	-629.29	1.93
10845.00	88.99	179.97	7348.42	3163.03	-3163.03	-629.29	0.09
10940.00	89.13	179.47	7349.98	3258.02	-3258.02	-628.83	0.54
11034.00	89.73	178.24	7350.92	3351.99	-3351.99	-626.95	1.46
11129.00	89.80	181.31	7351.30	3446.98	-3446.98	-626.58	3.23
11224.00	89.50	180.16	7351.89	3541.97	-3541.97	-627.80	1.25
11319.00	91.21	180.33	7351.30	3636.96	-3636.96	-628.21	1.81
11414.00	91.58	180.10	7348.99	3731.93	-3731.93	-628.56	0.46
11509.00	92.18	178.79	7345.87	3826.88	-3826.88	-627.64	1.51
11603.00	91.08	179.94	7343.20	3920.83	-3920.83	-626.59	1.69
11698.00	90.27	180.13	7342.08	4015.82	-4015.82	-626.65	0.88
11793.00	89.87	180.62	7341.97	4110.82	-4110.82	-627.27	0.67
11888.00	89.87	180.91	7342.20	4205.81	-4205.81	-628.54	0.30
11982.00	89.60	180.79	7342.64	4299.80	-4299.80	-629.93	0.31
12078.00	89.93	179.21	7343.03	4395.80	-4395.80	-629.93	1.68

MD	Inc	Azim	TVD	VS	+N/-S	+E/-W	DLS
ft	deg	deg	ft	ft	ft	ft	7100ft
12173.00	89.83	179.20	7343.23	4490.79	-4490.79	-628.61	0.11
12267.00	90.13	179.31	7343.25	4584.78	-4584.78	-627.38	0.34
12362.00	88.99	180.29	7343.98	4679.77	-4679.77	-627.05	1.58
12457.00	89.70	180.60	7345.06	4774.76	-4774.76	-627.78	0.81
12552.00	89.56	178.74	7345.68	4869.75	-4869.75	-627.23	1.96
12647.00	89.66	182.06	7346.32	4964.74	-4964.74	-627.90	3.49
12742.00	90.34	181.12	7346.32	5059.70	-5059.70	-630.53	1.22
12836.00	90.50	180.11	7345.63	5153.69	-5153.69	-631.53	1.08
12931.00	91.55	180.20	7343.93	5248.67	-5248.67	-631.79	1.10
13026.00	92.45	179.48	7340.62	5343.61	-5343.61	-631.53	1.22
13121.00	90.94	180.42	7337.80	5438.57	-5438.57	-631.44	1.87
13216.00	90.40	179.93	7336.69	5533.56	-5533.56	-631.73	0.76
13310.00	88.93	179.59	7337.24	5627.55	-5627.55	-631.34	1.61
13405.00	89.30	180.12	7338.71	5722.54	-5722.54	-631.10	0.68
13500.00	89.80	180.08	7339.46	5817.54	-5817.54	-631.27	0.53
13595.00	90.54	179.32	7339.18	5912.54	-5912.54	-630.77	1.12
13690.00	89.20	179.75	7339.40	6007.53	-6007.53	-629.99	1.48
13785.00	88.79	178.89	7341.07	6102.51	-6102.51	-628.87	0.99
13879.00	88.69	180.86	7343.14	6196.48	-6196.48	-628.66	2.09

MD	Inc	Azim	TVD	VS	+N/-S	+E/-W	DLS
ft	deg	deg	ft	ft	ft	ft	7100ft
13974.00	88.12	180.00	7345.78	6291.44	-6291.44	-629.37	1.08
14069.00	88.39	180.11	7348.68	6386.40	-6386.40	-629.47	0.31
14164.00	88.76	180.56	7351.04	6481.36	-6481.36	-630.03	0.61
14259.00	88.26	181.49	7353.52	6576.31	-6576.31	-631.73	1.11

5" = 100' FEET TVD