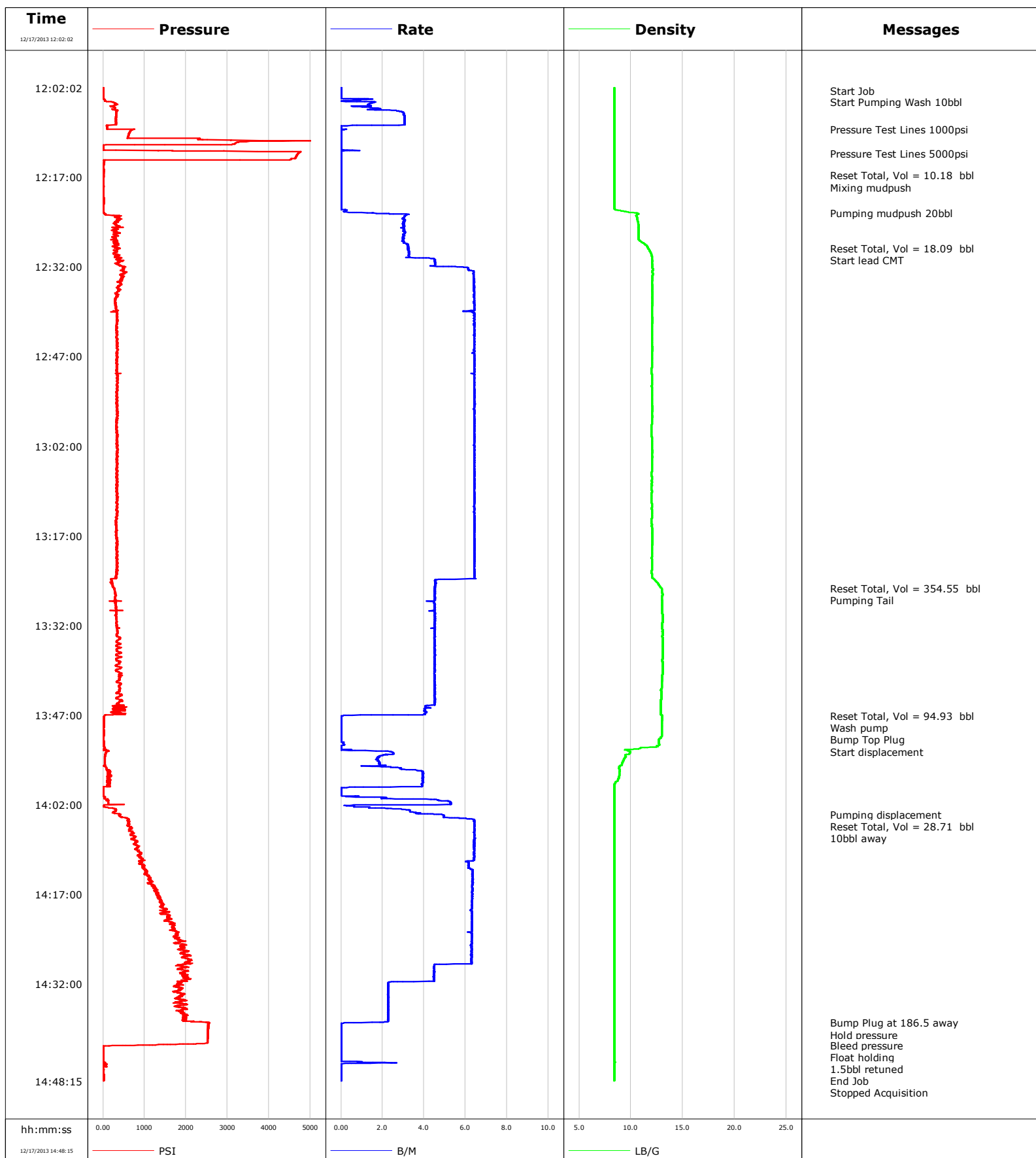


Well Telluride
Field Wildcat
Engineer Chris Valerio
Country United States

Client Nighthawk
SIR No. C459-02079
Job Type Production
Job Date 12-17-2013



				Customer Nighthawk		Job Number C459-02079	
Well Telluride 13-2		Location (legal)		Schlumberger Location		Job Start Dec/17/2013	
Field Wildcat		Formation Name/Type		Deviation deg	Bit Size 7.9 in	Well MD 8118.5 ft	Well TVD 8118.5 ft
County Lincoln		State/Province CO		BHP psi	BHST 184 degF	BHCT 153 degF	Pore Press. Gradient lb/gal
Well Master 0631494011		API/UWI					
Rig Name Xtreme 11	Drilled For Oil	Service Via Land	Casing/Liner				
			Depth, ft	Size, in	Weight, lb/ft	Grade	Thread
Offshore Zone	Well Class New	Well Type Development	348.0	8.6	24.0		8RD
			8118.5	5.5	17.0		8RD
Drilling Fluid Type Oil Mud		Max. Density lb/gal	Plastic Viscosity cP	Tubing/Drill Pipe			
				T/D	Depth, ft	Size, in	Weight, lb/ft
Service Line Cementing	Job Type Production						
Max. Allowed Tub. Press psi	Max. Allowed Ann. Press psi	WH Connection Single Cement head	Perforations/Open Hole				
			Top, ft	Bottom, ft	shot/ft	No. of Shots	Total Interval ft
			ft	ft			
			ft	ft			Diameter in
			ft	ft			
			Treat Down Casing	Displacement 187.2 bbl	Packer Type	Packer Depth ft	
			Tubing Vol. bbl	Casing Vol. 8118.5 bbl	Annular Vol. 252.0 bbl	Openhole Vol. bbl	
Casing/Tubing Secured <input checked="" type="checkbox"/>		1 Hole Vol. Circulated prior to Cement <input checked="" type="checkbox"/>		Casing Tools		Squeeze Job	
Lift Pressure 10223 psi				Shoe Type Guide		Squeeze Type	
Pipe Rotated <input type="checkbox"/>		Pipe Reciprocated <input checked="" type="checkbox"/>		Shoe Depth 8118.5 ft		Tool Type	
No. Centralizers		Top Plugs 1	Bottom Plugs	Stage Tool Type		Tool Depth ft	
Cement Head Type Single				Stage Tool Depth ft		Tail Pipe Size in	
Job Scheduled For Dec/17/2013 03:30		Arrived on Location Dec/16/2013 23:00	Leave Location Dec/17/2013 15:30	Collar Type Float		Tail Pipe Depth ft	
				Collar Depth 8071.0 ft		Sqz. Total Vol. bbl	
Date	Time 24-hr clock	Treating Pressure PSI	Flow Rate B/M	Density LB/G	Volume BBL	Message	
12/17/2013	12:02:02	4	0.0	8.41	0.0	Started Acquisition	
12/17/2013	12:02:30	4	0.0	8.41	0.0	Start Job	
12/17/2013	12:03:03	4	0.0	8.41	0.0	Start Pumping Wash 10bbl	
12/17/2013	12:04:33	259	1.6	8.40	0.6		
12/17/2013	12:07:04	311	3.1	8.40	6.1		
12/17/2013	12:09:04	742	0.2	8.41	10.1	Pressure Test Lines 1000psi	
12/17/2013	12:09:35	639	0.0	8.41	10.1		
12/17/2013	12:12:06	7	0.0	8.41	10.1		
12/17/2013	12:13:05	4701	0.0	8.41	10.2	Pressure Test Lines 5000psi	
12/17/2013	12:14:37	25	0.0	8.41	10.2		
12/17/2013	12:16:42	12	0.0	8.41	10.2	Reset Total, Vol = 10.18 bbl	
12/17/2013	12:16:52	12	0.0	8.41	10.2	Mixing mudpush	
12/17/2013	12:17:08	12	0.0	8.41	10.2		
12/17/2013	12:19:39	8	0.0	8.41	10.2		
12/17/2013	12:22:10	7	0.0	8.41	10.2		
12/17/2013	12:23:01	19	1.6	10.49	10.4	Pumping mudpush 20bbl	
12/17/2013	12:24:41	288	3.0	10.69	15.3		
12/17/2013	12:27:12	308	3.0	10.73	22.9		
12/17/2013	12:28:56	410	3.3	11.65	28.3	Reset Total, Vol = 18.09 bbl	
12/17/2013	12:29:07	336	3.3	11.73	28.9	Start lead CMT	
12/17/2013	12:29:43	261	3.3	11.91	30.8		

Well			Field		Job Start		Customer		Job Number	
Telluride 13-2			Wildcat		Dec/17/2013		Nighthawk		C459-02079	
Date	Time 24-hr clock	Treating Pressure PSI	Flow Rate B/M	Density LB/G	Volume BBL	Message				
12/17/2013	12:34:45	442	6.4	12.04	57.5					
12/17/2013	12:37:16	312	6.4	12.05	73.6					
12/17/2013	12:39:47	341	6.4	12.01	89.7					
12/17/2013	12:42:18	326	6.4	12.02	105.9					
12/17/2013	12:44:49	362	6.4	12.03	122.1					
12/17/2013	12:47:20	343	6.4	12.01	138.3					
12/17/2013	12:49:51	433	6.4	12.00	154.4					
12/17/2013	12:52:22	340	6.4	12.02	170.6					
12/17/2013	12:54:53	314	6.4	12.03	186.8					
12/17/2013	12:57:24	347	6.4	12.04	203.0					
12/17/2013	12:59:55	347	6.4	12.00	219.1					
12/17/2013	13:02:26	360	6.4	12.04	235.3					
12/17/2013	13:04:57	355	6.4	12.02	251.5					
12/17/2013	13:07:28	343	6.4	12.01	267.7					
12/17/2013	13:09:59	345	6.4	11.99	283.9					
12/17/2013	13:12:30	345	6.4	11.99	300.0					
12/17/2013	13:15:01	318	6.4	11.99	316.2					
12/17/2013	13:17:32	328	6.5	12.09	332.4					
12/17/2013	13:20:03	340	6.4	12.02	348.6					
12/17/2013	13:22:34	343	6.4	12.02	364.8					
12/17/2013	13:25:05	230	4.5	12.63	379.5					
12/17/2013	13:25:49	267	4.5	12.95	382.8	Reset Total, Vol = 354.55 bbl				
12/17/2013	13:26:00	282	4.5	12.98	383.7	Pumping Tail				
12/17/2013	13:27:36	302	4.5	12.98	390.9					
12/17/2013	13:30:07	323	4.5	13.05	402.2					
12/17/2013	13:32:38	339	4.5	13.04	413.6					
12/17/2013	13:35:09	429	4.5	13.07	424.9					
12/17/2013	13:37:40	329	4.5	13.05	436.3					
12/17/2013	13:40:11	389	4.5	13.06	447.6					
12/17/2013	13:42:42	404	4.5	12.93	459.0					
12/17/2013	13:45:13	341	4.5	12.90	470.3					
12/17/2013	13:47:09	35	0.1	13.04	477.8	Reset Total, Vol = 94.93 bbl				
12/17/2013	13:47:37	20	0.0	13.02	477.8	Wash pump				
12/17/2013	13:47:42	21	0.0	13.01	477.8	Bump Top Plug				
12/17/2013	13:47:44	21	0.0	13.01	477.8					
12/17/2013	13:50:15	16	0.0	12.96	477.8					
12/17/2013	13:52:46	16	0.1	10.20	477.8					
12/17/2013	13:55:17	43	1.9	9.14	482.4					
12/17/2013	13:57:48	161	3.9	8.76	490.9					
12/17/2013	14:00:19	5	0.0	8.41	495.9					
12/17/2013	14:02:50	298	3.1	8.42	502.7					
12/17/2013	14:03:41	409	4.9	8.42	505.8	Pumping displacement				
12/17/2013	14:03:49	399	5.0	8.42	506.5	Reset Total, Vol = 28.71 bbl				
12/17/2013	14:05:04	621	6.4	8.42	513.8	10bbl away				
12/17/2013	14:05:21	614	6.4	8.42	515.6					
12/17/2013	14:07:52	715	6.4	8.42	531.8					
12/17/2013	14:10:23	907	6.4	8.42	548.0					
12/17/2013	14:12:54	1038	6.3	8.42	563.7					
12/17/2013	14:15:25	1166	6.3	8.42	579.7					
12/17/2013	14:17:56	1370	6.3	8.42	595.6					
12/17/2013	14:20:27	1579	6.3	8.42	611.5					
12/17/2013	14:22:58	1665	6.3	8.42	627.4					
12/17/2013	14:25:29	2013	6.3	8.42	643.2					
12/17/2013	14:28:00	2096	6.3	8.42	659.1					

Well Telluride 13-2			Field Wildcat		Job Start Dec/17/2013	Customer Nighthawk		Job Number C459-02079
Date	Time 24-hr clock	Treating Pressure PSI	Flow Rate B/M	Density LB/G	Volume BBL	Message		
12/17/2013	14:33:02	1812	2.3	8.42	679.8			
12/17/2013	14:35:33	1978	2.3	8.42	685.6			
12/17/2013	14:38:04	1929	2.3	8.42	691.3			
12/17/2013	14:38:29	2574	1.0	8.42	692.2	Bump Plug at 186.5 away		
12/17/2013	14:40:04	2530	0.0	8.42	692.2	Hold pressure		
12/17/2013	14:40:35	2527	0.0	8.42	692.2			
12/17/2013	14:42:16	966	0.0	8.42	692.2	Bleed pressure		
12/17/2013	14:42:27	9	0.0	8.42	692.2	Float holding		
12/17/2013	14:42:49	10	0.0	8.42	692.2	1.5bbl retuned		
12/17/2013	14:42:54	9	0.0	8.42	692.2	End Job		
12/17/2013	14:43:06	10	0.0	8.42	692.2			
12/17/2013	14:45:37	-16	0.0	8.42	692.7			
12/17/2013	14:48:08	17	0.0	8.41	692.7			

Post Job Summary

Average Pump Rates, bbl/min					Volume of Fluid Injected, bbl							
Slurry 5.1	N2	Mud	Maximum Rate 6.5	Total Slurry 448.0	Mud 0.0	Spacer 20.0	N2					
Treating Pressure Summary, psi					Breakdown Fluid							
Maximum 2574	Final 2574	Average 619	Bump Plug to 2300	Breakdown	Type	Volume bbl	Density lb/gal					
Avg. N2 Percent %	Designed Slurry Volume 448.0 bbl	Displacement 186.5 bbl	Mix Water Temp 62 degF	Cement Circulated to Surface? <input checked="" type="checkbox"/>		Volume 90.0 bbl						
				Washed Thru Perfs <input type="checkbox"/>		To ft						
Customer or Authorized Representative Lynn Gibbs			Schlumberger Supervisor Chris Valerio			Circulation Lost <input type="checkbox"/>	Job Completed <input checked="" type="checkbox"/>					
						-	-					