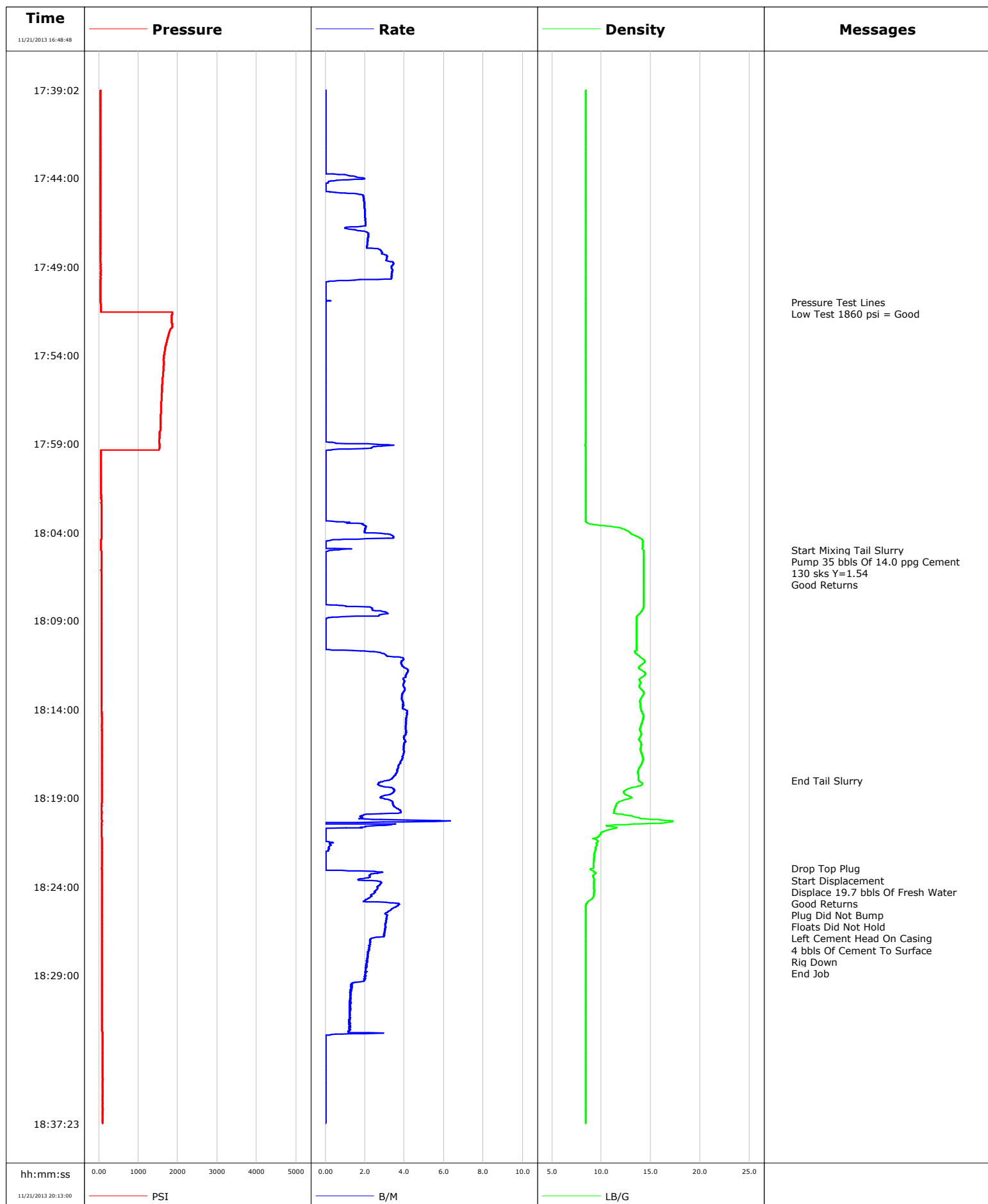


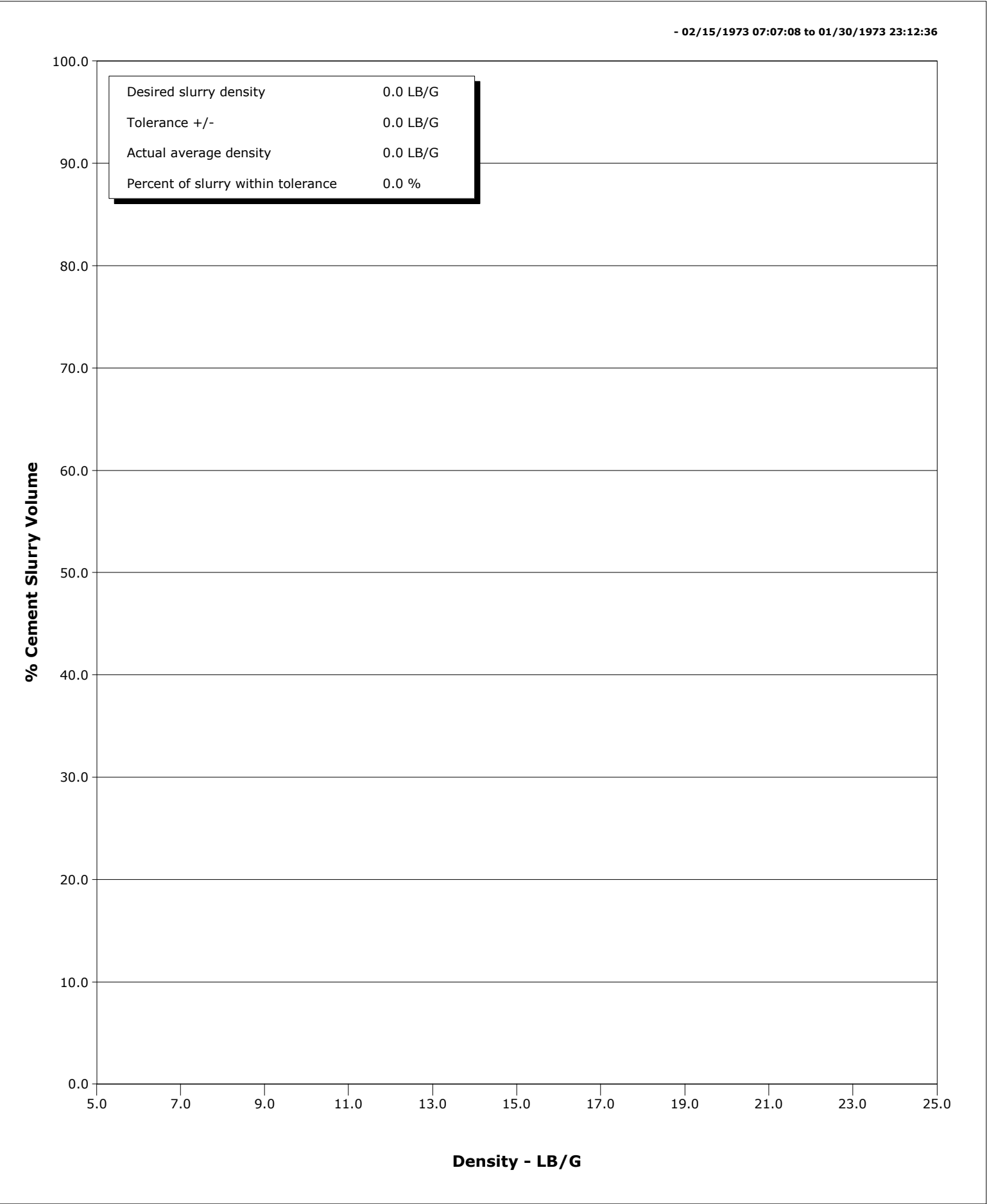
<b>Well</b>	Telluride 13-2	<b>Client</b>	Nighthawk Production
<b>Field</b>	Wildcat	<b>SIR No.</b>	
<b>Engineer</b>	Justin Zika/Conley	<b>Job Type</b>	Surface
<b>Country</b>	United States	<b>Job Date</b>	11-22-2013



Schlumberger

Cementing Qa/Qc Density Report

Well	Telluride 13-2	Client	Nighthawk Production
Field	Wildcat	SIR No.	
Engineer	Justin Zika/Conley	Job Type	Surface
Country	United States	Job Date	11-22-2013





# Cementing Service Report

				Customer Nighthawk Production			Job Number 1027731									
Well Telluride 13-2 13-2			Location (legal) Cheyenne, WY			Schlumberger Location CWY		Job Start Nov/22/2013								
Field Wildcat		Formation Name/Type Shale		Deviation		Bit Size 12.3 in		Well MD 346.0 ft		Well TVD 346.0 ft						
County Lincoln			State/Province Colorado			BHP		BHST 84 degF		BHCT 80 degF		Pore Press. Gradient				
Well Master			API/UWI													
Rig Name Spudder		Drilled For Oil		Service Via Land		Casing/Liner										
						Depth, ft		Size, in		Weight, lb/ft		Grade		Thread		
Offshore Zone		Well Class New		Well Type Development		346.0		8.630		24.0		J55		8RD		
						0.0		0.000		0.0						
Drilling Fluid Type			Max. Density		Plastic Viscosity		Tubing/Drill Pipe									
							Depth,		Size,		Weight,		Grade		Thread	
Service Line Cementing		Job Type Surface														
Max. Allowed Tub. Press 100 psi		Max. Allowed Ann. Press		WH Connection Single Cement head		Perforations/Open Hole										
						Top,		Bottom,				No. of Shots		Total Interval		
														Diameter		
						Treat Down Casing		Displacement 19.7 bbl		Packer Type		Packer Depth				
						Tubing Vol.		Casing Vol. 22.0 bbl		Annular Vol. 27.0 bbl		Openhole Vol. 51.0 bbl				
Casing/Tubing Secured <input checked="" type="checkbox"/>			1 Hole Vol. Circulated prior to Cement <input checked="" type="checkbox"/>			Casing Tools			Squeeze Job							
Lift Pressure 144 psi						Shoe Type Guide			Squeeze Type							
Pipe Rotated <input type="checkbox"/>			Pipe Reciprocated <input type="checkbox"/>			Shoe Depth 350.0 ft			Tool Type							
No. Centralizers			Top Plugs 1		Bottom Plugs		Stage Tool Type			Tool Depth						
Cement Head Type Single						Stage Tool Depth			Tail Pipe Size							
Job Scheduled For Nov/22/2013 12:00			Arrived on Location Nov/22/2013 12:30		Leave Location Nov/22/2013 19:30		Collar Type Diff-Fill			Tail Pipe Depth						
							Collar Depth 304.0 ft			Sqz. Total Vol.						
Date	Time 24-hr clock	Treating Pressure PSI		Flow Rate B/M		Density LB/G		Volume BBL		Message						
11/21/2013	16:48:45									Started Acquisition						
11/21/2013	16:48:48	1		0.0		-0.00		0.0								
11/21/2013	16:50:25	-0		0.0		-0.00		0.0								
11/21/2013	16:52:05	0		0.0		-0.00		0.0								
11/21/2013	16:53:45	1		0.0		-0.00		0.0								
11/21/2013	16:55:25	1		0.0		-0.00		0.0								
11/21/2013	16:57:05	-0		0.0		-0.00		0.0								
11/21/2013	16:58:45	0		0.0		6.69		0.0								
11/21/2013	17:00:25	-0		0.0		8.41		0.0								
11/21/2013	17:02:05	72		2.6		8.32		0.9								
11/21/2013	17:03:45	135		3.0		8.40		5.3								
11/21/2013	17:05:25	110		3.3		8.39		10.7								
11/21/2013	17:07:05	7		0.0		8.40		14.1								
11/21/2013	17:08:45	-4		0.0		8.40		14.1								
11/21/2013	17:10:25	2		0.2		8.40		14.1								
11/21/2013	17:12:05	42		2.8		8.39		16.1								
11/21/2013	17:13:45	51		3.3		8.39		21.3								
11/21/2013	17:15:25	37		3.2		8.39		26.8								
11/21/2013	17:17:05	32		3.3		8.39		32.2								
11/21/2013	17:18:45	37		3.3		8.39		37.7								
11/21/2013	17:20:25	40		3.3		8.39		43.1								

Well			Field		Job Start	Customer	Job Number
Telluride 13-2 13-2			Wildcat		Nov/22/2013	Nighthawk Production	1027731
Date	Time 24-hr clock	Treating Pressure PSI	Flow Rate B/M	Density LB/G	Volume BBL	Message	
11/21/2013	17:23:45	13	0.2	8.40	50.9		
11/21/2013	17:25:25	15	0.2	8.40	51.3		
11/21/2013	17:27:05	19	0.1	8.40	51.6		
11/21/2013	17:28:45	22	0.0	8.40	51.6		
11/21/2013	17:30:25	83	1.5	8.39	52.7		
11/21/2013	17:32:05	36	0.4	8.40	56.3		
11/21/2013	17:33:45	43	0.7	8.40	57.5		
11/21/2013	17:35:25	-7	0.0	8.40	58.4		
11/21/2013	17:37:05	27	0.0	8.40	58.4		
11/21/2013	17:38:45	38	0.0	8.40	58.4		
11/21/2013	17:39:00					Start Job	
11/21/2013	17:39:00					Rig Up	
11/21/2013	17:39:00					Hold Safety Meeting	
11/21/2013	17:39:00					Break Circulation 10 bbls Of H2O	
11/21/2013	17:39:00					Good Returns	
11/21/2013	17:39:00	38	0.0	8.40	58.4		
11/21/2013	17:40:25	40	0.0	8.40	58.4		
11/21/2013	17:42:05	43	0.0	8.40	58.4		
11/21/2013	17:43:45	44	0.0	8.40	58.4		
11/21/2013	17:45:25	47	2.0	8.40	60.1		
11/21/2013	17:47:05	48	2.2	8.40	63.2		
11/21/2013	17:48:45	49	3.4	8.40	67.5		
11/21/2013	17:50:25	45	0.0	8.40	70.9		
11/21/2013	17:51:00					Pressure Test Lines	
11/21/2013	17:51:00					Low Test 1860 psi = Good	
11/21/2013	17:51:00	46	0.0	8.40	70.9		
11/21/2013	17:52:05	1847	0.0	8.40	70.9		
11/21/2013	17:53:45	1672	0.0	8.40	70.9		
11/21/2013	17:55:25	1613	0.0	8.40	70.9		
11/21/2013	17:57:05	1572	0.0	8.40	70.9		
11/21/2013	17:58:45	1532	0.0	8.40	70.9		
11/21/2013	18:00:25	60	0.0	8.40	71.7		
11/21/2013	18:02:05	62	0.0	8.40	71.7		
11/21/2013	18:03:45	63	2.0	11.83	72.3		
11/21/2013	18:05:00					Start Mixing Tail Slurry	
11/21/2013	18:05:00					Pump 35 bbls Of 14.0 ppg Cement	
11/21/2013	18:05:00					130 sks Y=1.54	
11/21/2013	18:05:00					Good Returns	
11/21/2013	18:05:00	62	0.5	14.28	74.2		
11/21/2013	18:05:25	62	0.0	14.30	74.2		
11/21/2013	18:07:05	62	0.0	14.30	74.2		
11/21/2013	18:08:45	65	1.6	13.59	75.7		
11/21/2013	18:10:25	67	0.0	13.54	75.8		
11/21/2013	18:12:05	72	4.1	14.41	81.0		
11/21/2013	18:13:45	73	3.9	13.94	87.6		
11/21/2013	18:15:25	75	4.1	14.04	94.3		
11/21/2013	18:17:05	76	3.8	14.08	100.9		
11/21/2013	18:18:00					End Tail Slurry	
11/21/2013	18:18:00	75	3.2	13.79	104.2		
11/21/2013	18:18:45	76	3.4	12.31	106.5		
11/21/2013	18:20:25	73	0.0	16.35	111.8		
11/21/2013	18:22:05	75	0.0	9.32	112.5		
11/21/2013	18:23:00					Drop Top Plug	
11/21/2013	18:23:00					Start Displacement	

Well			Field			Job Start	Customer	Job Number
Telluride 13-2 13-2			Wildcat			Nov/22/2013	Nighthawk Production	1027731
Date	Time 24-hr clock	Treating Pressure PSI	Flow Rate B/M	Density LB/G	Volume BBL	Message		
11/21/2013	18:23:00					Good Returns		
11/21/2013	18:23:00					Plug Did Not Bump		
11/21/2013	18:23:00					Floats Did Not Hold		
11/21/2013	18:23:00					Left Cement Head On Casing		
11/21/2013	18:23:00					4 bbls Of Cement To Surface		
11/21/2013	18:23:00					Rig Down		
11/21/2013	18:23:00					End Job		
11/21/2013	18:23:00	74	0.0	9.06	112.5			
11/21/2013	18:23:45	77	2.8	9.23	113.9			
11/21/2013	18:25:25	77	3.2	8.40	118.6			
11/21/2013	18:27:05	76	2.2	8.40	123.5			
11/21/2013	18:28:45	76	2.1	8.40	127.1			
11/21/2013	18:30:25	79	1.2	8.40	129.7			
11/21/2013	18:32:05	85	1.3	8.40	131.8			
11/21/2013	18:33:45	94	0.0	8.40	132.2			
11/21/2013	18:35:25	97	0.0	8.40	132.2			
11/21/2013	18:37:05	97	0.0	8.40	132.2			
11/21/2013	18:38:45	97	0.0	8.40	132.2			
11/21/2013	18:40:25	97	0.0	8.40	132.2			
11/21/2013	18:42:05	96	0.0	8.40	132.2			
11/21/2013	18:43:45	96	0.0	8.40	132.2			
11/21/2013	18:45:25	96	0.0	8.40	132.2			
11/21/2013	18:47:05	96	0.0	8.40	132.2			
11/21/2013	18:48:45	343	0.0	8.40	132.2			
11/21/2013	18:50:25	467	0.0	8.40	132.2			
11/21/2013	18:52:05	520	0.0	8.40	132.2			
11/21/2013	18:53:45	555	0.0	8.40	132.2			
11/21/2013	18:55:25	586	0.0	8.40	132.2			
11/21/2013	18:57:05	613	0.0	8.39	132.2			
11/21/2013	18:58:45	641	0.0	8.39	132.2			
11/21/2013	19:00:25	674	0.0	8.39	132.2			
11/21/2013	19:02:05	701	0.0	8.39	132.2			
11/21/2013	19:03:45	733	0.0	8.39	132.2			
11/21/2013	19:05:25	784	0.0	8.39	132.2			
11/21/2013	19:07:05	882	0.0	8.41	132.3			
11/21/2013	19:08:45	1044	11.2	2.57	132.8			
11/21/2013	19:10:25	1298	0.0	8.17	133.7			
11/21/2013	19:12:05	1651	0.0	-0.00	134.5			
11/21/2013	19:13:45	2049	0.0	-0.00	134.5			
11/21/2013	19:15:25	2552	0.0	-0.00	134.5			
11/21/2013	19:17:05	3216	0.0	-0.00	134.5			
11/21/2013	19:18:45	3791	0.0	-0.00	134.5			
11/21/2013	19:20:25	4234	0.0	-0.00	134.5			
11/21/2013	19:22:05	4619	0.0	-0.00	134.5			
11/21/2013	19:23:45	4934	0.0	-0.00	134.5			
11/21/2013	19:25:25	5194	0.0	-0.00	134.5			
11/21/2013	19:27:05	5419	0.0	-0.00	134.5			
11/21/2013	19:28:45	5631	0.0	-0.00	134.5			
11/21/2013	19:30:25	5834	0.0	-0.00	134.5			
11/21/2013	19:32:05	6015	0.0	-0.00	134.5			
11/21/2013	19:33:45	6169	0.0	-0.00	134.5			
11/21/2013	19:35:25	6311	0.0	-0.00	134.5			
11/21/2013	19:37:05	6436	0.0	-0.00	134.5			
11/21/2013	19:38:45	6553	0.0	-0.00	134.5			

Well			Field		Job Start	Customer	Job Number
Telluride 13-2 13-2			Wildcat		Nov/22/2013	Nighthawk Production	1027731
Date	Time 24-hr clock	Treating Pressure PSI	Flow Rate B/M	Density LB/G	Volume BBL	Message	
11/21/2013	19:42:05	6763	0.0	-0.00	134.5		
11/21/2013	19:43:45	6852	0.0	-0.00	134.5		
11/21/2013	19:45:25	3894	0.0	-0.00	134.5		
11/21/2013	19:47:05	3207	0.0	-0.00	134.5		
11/21/2013	19:48:45	2873	0.0	-0.00	134.5		
11/21/2013	19:50:25	2664	0.0	0.00	134.5		
11/21/2013	19:52:05	2519	0.0	0.00	134.5		
11/21/2013	19:53:45	2406	0.0	-0.00	134.5		
11/21/2013	19:55:25	2311	0.0	-0.00	134.5		
11/21/2013	19:57:05	2230	0.0	-0.00	134.5		
11/21/2013	19:58:45	2161	0.0	-0.00	134.5		
11/21/2013	20:00:25	2100	0.0	-0.00	134.5		
11/21/2013	20:02:05	2047	0.0	-0.00	134.5		
11/21/2013	20:03:45	2001	0.0	-0.00	134.5		
11/21/2013	20:05:25	1959	0.0	-0.00	134.5		
11/21/2013	20:07:05	1922	0.0	-0.00	134.5		
11/21/2013	20:08:45	1888	0.0	-0.00	134.5		
11/21/2013	20:10:25	1859	0.0	-0.00	134.5		

Post Job Summary

Average Pump Rates,					Volume of Fluid Injected, bbl			
Slurry	N2	Mud	Maximum Rate		Total Slurry 35.0	Mud	Spacer 10.0	N2
Treating Pressure Summary, psi					Breakdown Fluid			
Maximum 100	Final 94	Average	Bump Plug to	Breakdown	Type	Volume		Density
Avg. N2 Percent		Designed Slurry Volume 35.0 bbl		Displacement 19.7 bbl	Mix Water Temp -0 degF	Cement Circulated to Surface? <input checked="" type="checkbox"/>	Volume 4.0 bbl	
						Washed Thru Perfs <input type="checkbox"/>	To	
Customer or Authorized Representative Jim Weir			Schlumberger Supervisor Justin Zika			Circulation Lost <input type="checkbox"/>	Job Completed <input checked="" type="checkbox"/>	
						-	-	