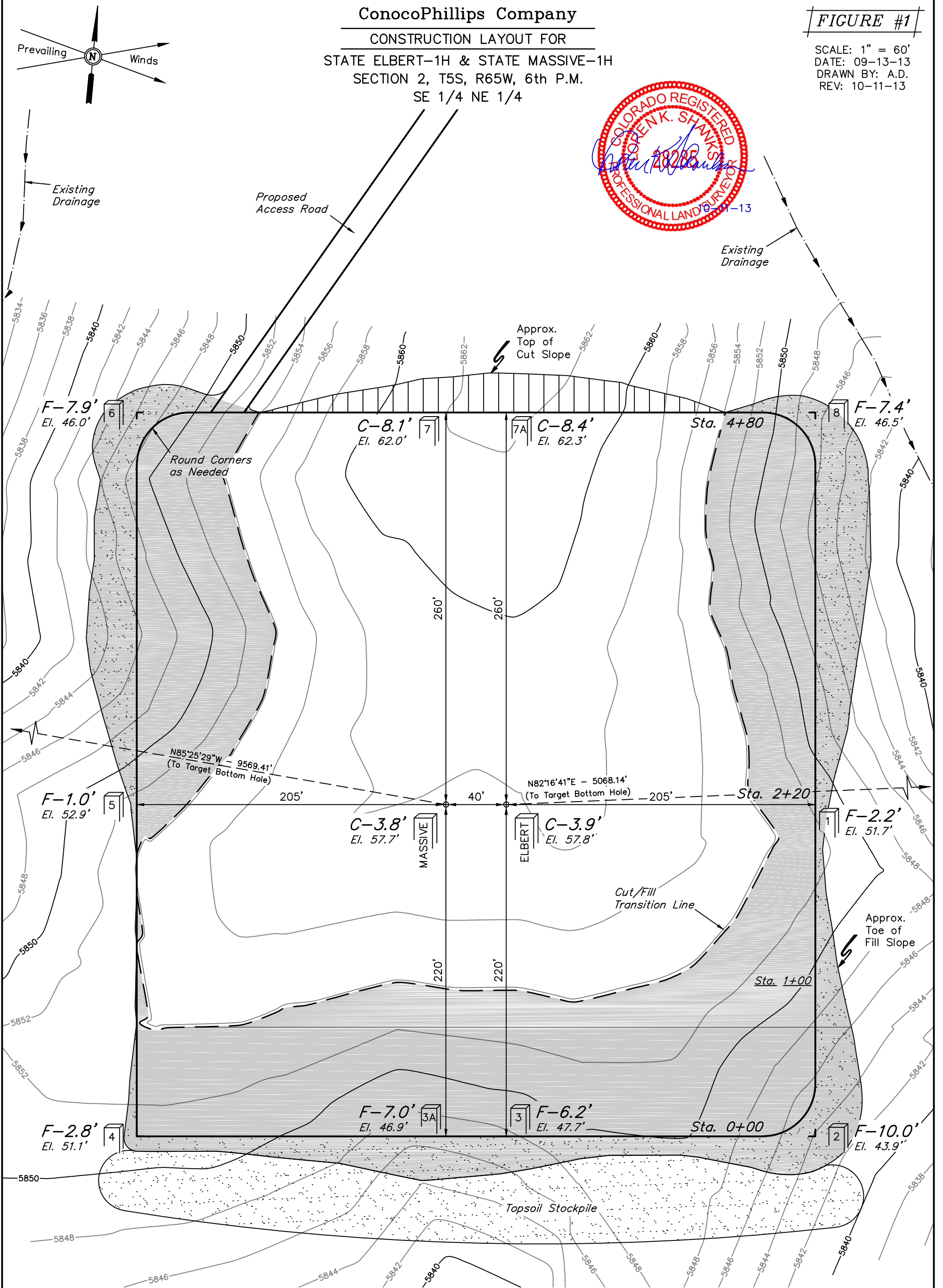


ConocoPhillips Company
CONSTRUCTION LAYOUT FOR
STATE ELBERT-1H & STATE MASSIVE-1H
SECTION 2, T5S, R65W, 6th P.M.
SE 1/4 NE 1/4

FIGURE #1

SCALE: 1" = 60'
DATE: 09-13-13
DRAWN BY: A.D.
REV: 10-11-13



Elev. Ungraded Ground At STATE ELBERT-1H Loc. Stake = 5857.8'
FINISHED GRADE ELEV. AT STATE ELBERT-1H LOC. STAKE = 5853.9'

UINTAH ENGINEERING & LAND SURVEYING
85 So. 200 East * Vernal, Utah 84078 * (435) 789-1017

ConocoPhillips Company

CONSTRUCTION LAYOUT CROSS SECTIONS FOR

STATE ELBERT-1H & STATE MASSIVE-1H

SECTION 2, T5S, R65W, 6th P.M.

SE 1/4 NE 1/4

FIGURE #2

1" = 40'

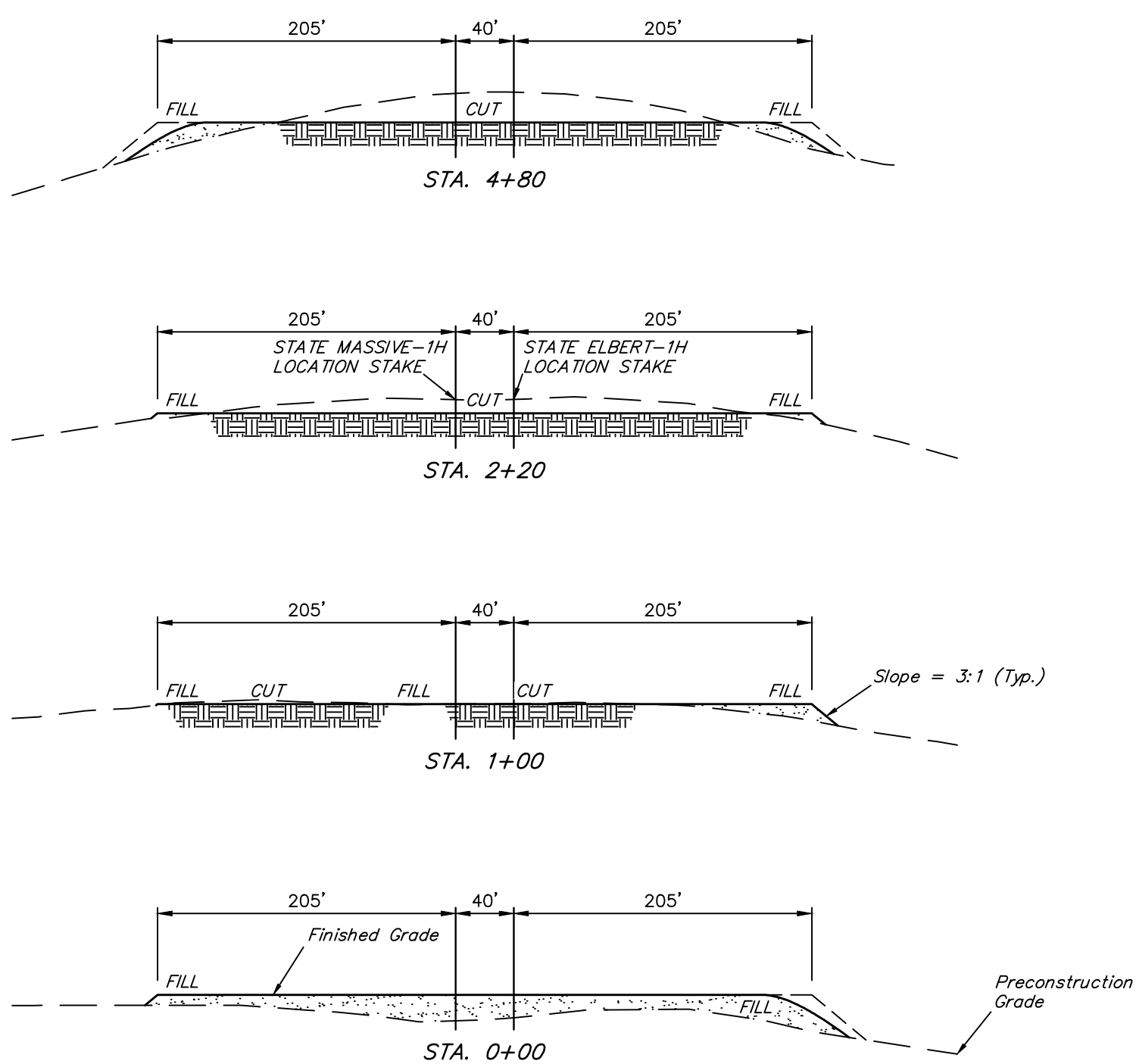
X-Section Scale

1" = 100'

DATE: 09-13-13

DRAWN BY: A.D.

REV: 10-11-13



NOTE:

Topsoil should not be Stripped Below Finished Grade on Substructure Area.

* NOTE:

FILL QUANTITY INCLUDES 10% FOR COMPACTION

APPROXIMATE YARDAGES

(6") Topsoil Stripping	= 4,630 Cu. Yds.
Remaining Location	= 15,230 Cu. Yds.
TOTAL CUT	= 19,860 CU. YDS.
FILL	= 15,230 CU. YDS.

EXCESS MATERIAL	= 4,630 Cu. Yds.
Topsoil	= 4,630 Cu. Yds.
EXCESS UNBALANCE (After Interim Rehabilitation)	= 0 Cu. Yds.

APPROXIMATE ACREAGE	
WELL SITE DISTURBANCE	= ± 6.267 ACRES
ACCESS ROAD DISTURBANCE	= ± 0.439 ACRES
TOTAL	= ± 6.706 ACRES

UINTAH ENGINEERING & LAND SURVEYING

85 So. 200 East * Vernal, Utah 84078 * (435) 789-1017