

WELL LOCATION PLAT  
T5S, R65W, 6th P.M.

ConocoPhillips Company

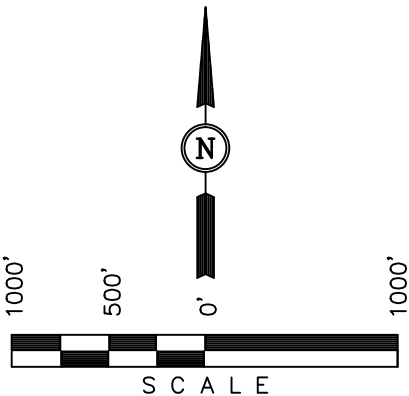
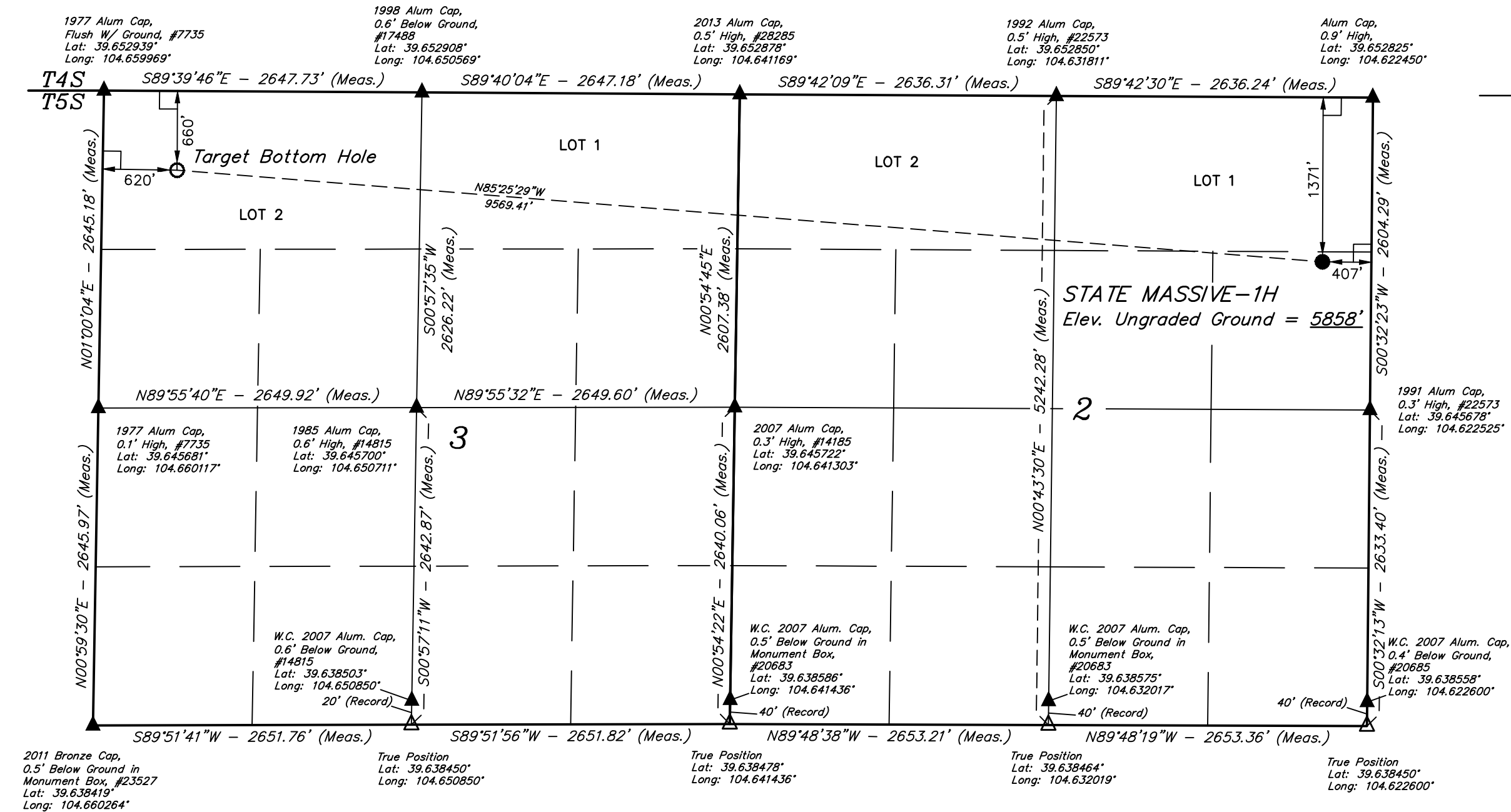
Well location, STATE MASSIVE-1H, located as shown in the SE 1/4 NE 1/4 of Section 2, T5S, R65W, 6th P.M., Arapahoe County, Colorado.

BASIS OF ELEVATION

BENCHMARK 374 LOCATED ON THE SECTION LINE BETWEEN SECTIONS 12 & 13, T5S, R64W, 6th. P.M., TAKEN FROM 1988 PUBLISHED DATUM BY THE UNITED STATES DEPARTMENT OF THE INTERIOR, GEOLOGICAL SURVEY AS BEING 6054.61 FEET.

BASIS OF BEARINGS

BASIS OF BEARINGS IS A G.P.S. OBSERVATION.



CERTIFICATE OF ACCURACY

THIS IS TO CERTIFY THAT THE ABOVE PLAT WAS PREPARED FROM FIELD NOTES OF ACTUAL SURVEYS MADE BY ME OR UNDER MY SUPERVISION AND THAT THE SAME ARE TRUE AND CORRECT TO THE BEST OF MY KNOWLEDGE AND BELIEF.

REGISTERED LAND SURVEYOR  
REGISTRATION NO. 28285  
STATE OF COLORADO

- LEGEND:
- └─┘ = 90° SYMBOL
  - = PROPOSED WELL HEAD.
  - ▲ = SECTION CORNERS LOCATED.
  - △ = SECTION CORNERS RE-ESTABLISHED. (Not Set on Ground.)

REVISED: 10-11-13

UINTAH ENGINEERING & LAND SURVEYING  
85 SOUTH 200 EAST - VERNAL, UTAH 84078  
(435) 789-1017

PDOP = 1.2	
NAD 83 (TARGET BOTTOM HOLE)	NAD 83 (SURFACE LOCATION)
LATITUDE = 39°39'04.03" (39.651119)	LATITUDE = 39°38'56.64" (39.649067)
LONGITUDE = 104°39'28.10" (104.657806)	LONGITUDE = 104°37'26.17" (104.623936)
NAD 27 (TARGET BOTTOM HOLE)	NAD 27 (SURFACE LOCATION)
LATITUDE = 39°39'04.08" (39.651133)	LATITUDE = 39°38'56.68" (39.649078)
LONGITUDE = 104°39'26.21" (104.657281)	LONGITUDE = 104°37'24.28" (104.623411)

SCALE 1" = 1000'	DATE SURVEYED: 09-10-13	DATE DRAWN: 09-13-13
PARTY J.H. C.M. A.D.	REFERENCES G.L.O. PLAT	
WEATHER HOT	FILE ConocoPhillips Company	

SECTION BREAKDOWN  
T5S, R65W, 6th P.M.

ConocoPhillips Company

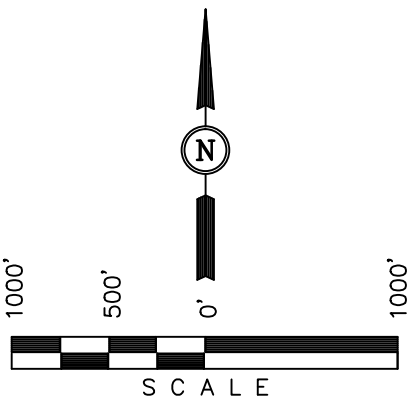
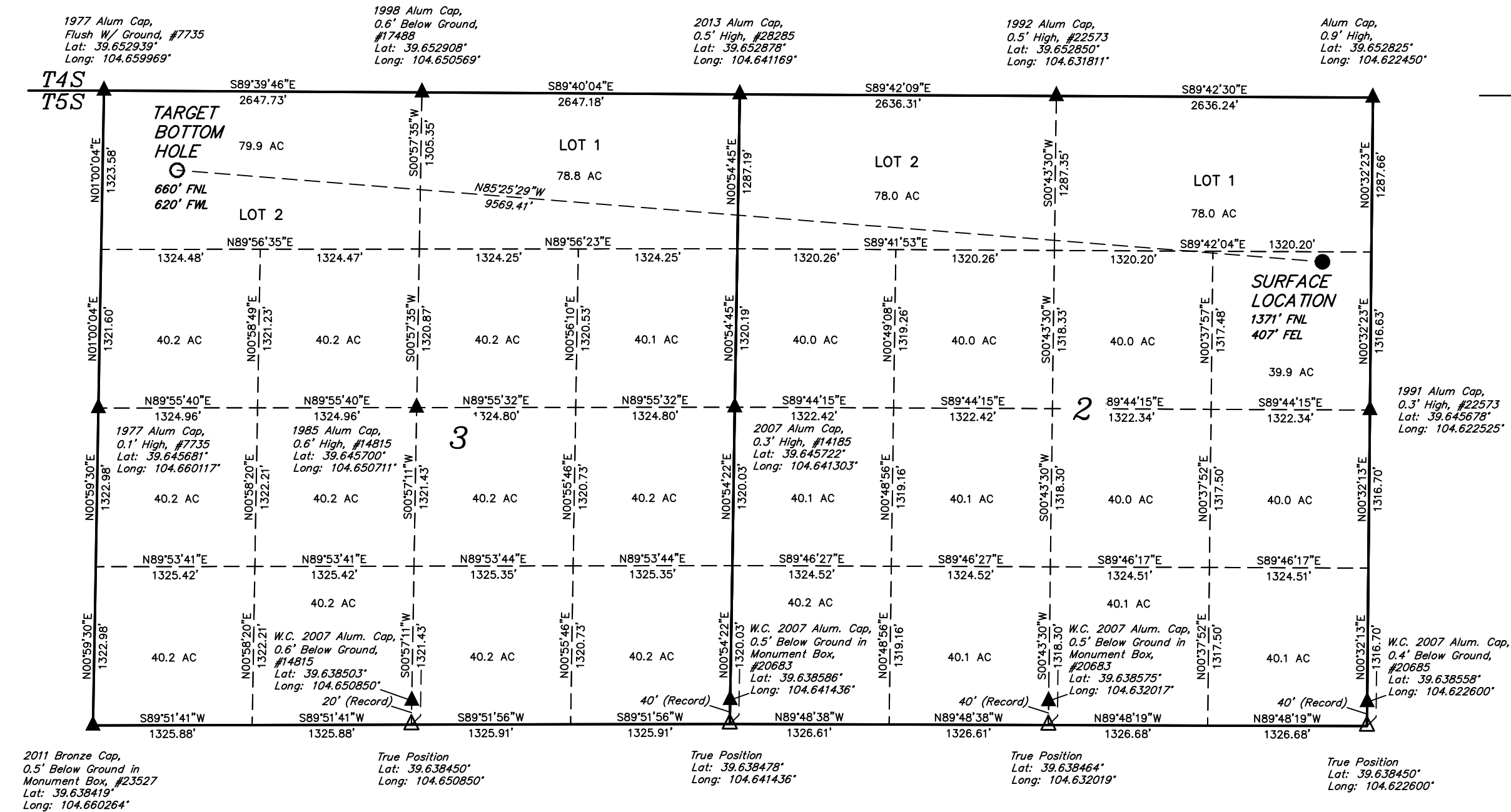
Well location, STATE MASSIVE-1H, located as shown in the SE 1/4 NE 1/4 of Section 2, T5S, R65W, 6th P.M., Arapahoe County, Colorado.

BASIS OF ELEVATION

BENCHMARK 374 LOCATED ON THE SECTION LINE BETWEEN SECTIONS 12 & 13, T5S, R64W, 6th. P.M., TAKEN FROM 1988 PUBLISHED DATUM BY THE UNITED STATES DEPARTMENT OF THE INTERIOR, GEOLOGICAL SURVEY AS BEING 6054.61 FEET.

BASIS OF BEARINGS

BASIS OF BEARINGS IS A G.P.S. OBSERVATION.



CERTIFICATE

THIS IS TO CERTIFY THAT THE ABOVE PLAT WAS PREPARED FROM FIELD NOTES OF ACTUAL SURVEYS MADE BY ME OR UNDER MY SUPERVISION AND THAT THE SAME ARE TRUE AND CORRECT TO THE BEST OF MY KNOWLEDGE AND BELIEF.

REGISTERED LAND SURVEYOR  
REGISTRATION NO. 28285  
STATE OF COLORADO

LEGEND:

- └─┘ = 90° SYMBOL
- = PROPOSED WELL HEAD.
- ▲ = SECTION CORNERS LOCATED.
- △ = SECTION CORNERS RE-ESTABLISHED. (Not Set on Ground.)

PDOP = 1.2

NAD 83 (TARGET BOTTOM HOLE)	NAD 83 (SURFACE LOCATION)
LATITUDE = 39°39'04.03" (39.651119)	LATITUDE = 39°38'56.64" (39.649067)
LONGITUDE = 104°39'28.10" (104.657806)	LONGITUDE = 104°37'26.17" (104.623936)
NAD 27 (TARGET BOTTOM HOLE)	NAD 27 (SURFACE LOCATION)
LATITUDE = 39°39'04.08" (39.651133)	LATITUDE = 39°38'56.68" (39.649078)
LONGITUDE = 104°39'26.21" (104.657281)	LONGITUDE = 104°37'24.28" (104.623411)

REVISED: 10-11-13

UINTAH ENGINEERING & LAND SURVEYING 85 SOUTH 200 EAST - VERNAL, UTAH 84078 (435) 789-1017		
SCALE 1" = 1000'	DATE SURVEYED: 09-10-13	DATE DRAWN: 09-13-13
PARTY J.H. C.M. A.D.	REFERENCES G.L.O. PLAT	
WEATHER HOT	FILE ConocoPhillips Company	