

WELL LOCATION PLAT T5S, R65W, 6th P.M.

ConocoPhillips Company

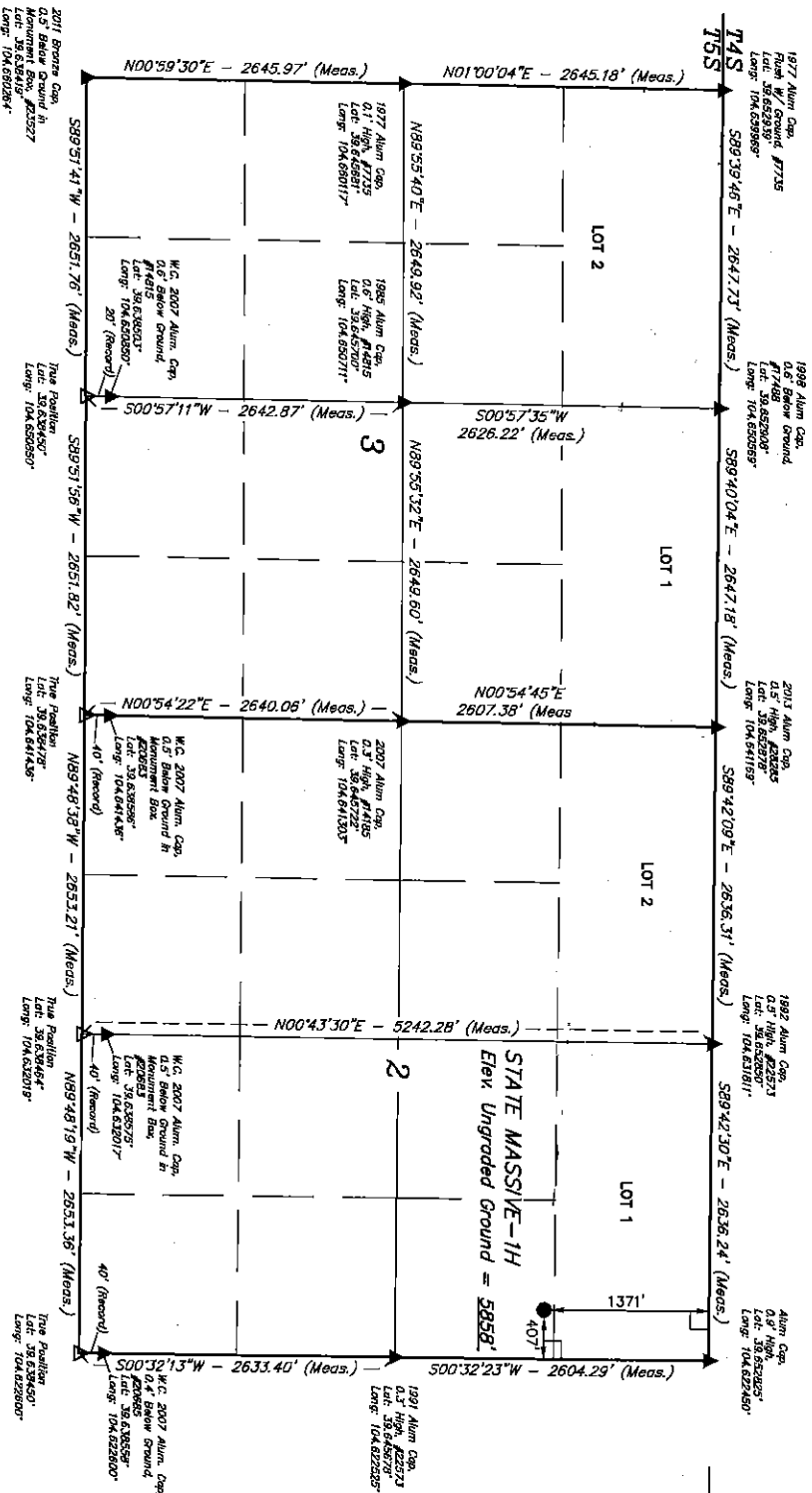
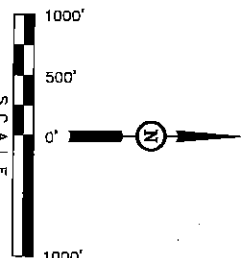
Well location, STATE MASSIVE-1H, located as shown in the SE 1/4 NE 1/4 of Section 2, T5S, R65W, 6th P.M., Arapahoe County, Colorado.

BASIS OF ELEVATION

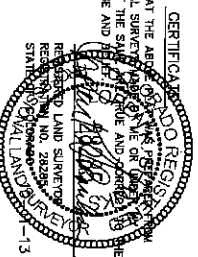
BENCHMARK 374 LOCATED ON THE SECTION LINE BETWEEN SECTIONS 12 & 13, T5S, R64W, 6th P.M., TAKEN FROM 1988 PUBLISHED DATUM BY THE UNITED STATES DEPARTMENT OF THE INTERIOR, GEOLOGICAL SURVEY AS BEING 6054.61 FEET.

BASIS OF BEARINGS

BASIS OF BEARINGS IS A G.P.S. OBSERVATION.



REVISED: 10-11-13



UTAH ENGINEERING & LAND SURVEYING
66 SOUTH 200 EAST - VERNAL, UTAH 84078
(435) 789-1017

DATE SURVEYED	DATE DRAWN
09-10-13	08-15-13
PARTY	REFERENCES
J.H. C.M. A.D.	G.L.O. PLAT
WEATHER	FILE
HOT	ConocoPhillips Company

- LEGEND:
- = 90° SYMBOL
 - = PROPOSED WELL HEAD
 - ▲ = SECTION CORNERS LOCATED
 - △ = SECTION CORNERS RE-ESTABLISHED (Not Set on Ground)

SECTION BREAKDOWN T5S, R65W, 6th P.M.

ConocoPhillips Company

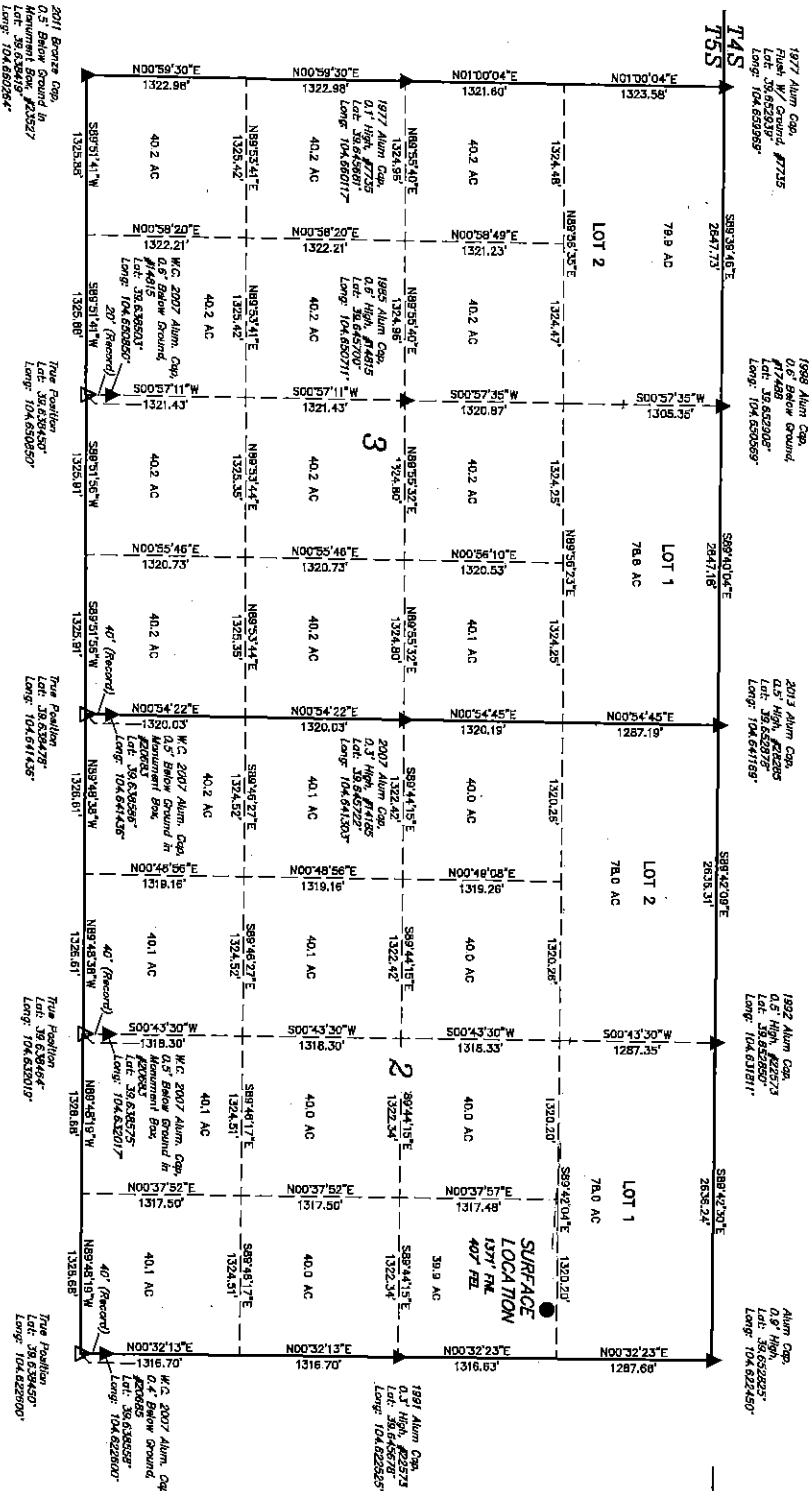
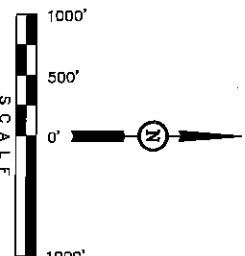
Well location, STATE MASSIVE-14, located as shown in the SE 1/4 NE 1/4 of Section 2, T5S, R65W, 6th P.M., Arapahoe County, Colorado.

BASIS OF ELEVATION

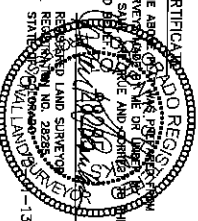
BENCHMARK 374 LOCATED ON THE SECTION LINE BETWEEN SECTIONS 12 & 13, T5S, R64W, 6th P.M., TAKEN FROM 1988 PUBLISHED DATUM BY THE UNITED STATES DEPARTMENT OF THE INTERIOR, GEOLOGICAL SURVEY AS BEING 6054.61 FEET.

BASIS OF BEARINGS

BASES OF BEARINGS IS A G.P.S. OBSERVATION.



REVISED: 10-11-13



UNTAH ENGINEERING & LAND SURVEYING
86 SOUTH 200 EAST - VERNAL, UTAH 84078
(435) 780-1017

DATE SURVEYED	DATE DRAWN
09-10-13	09-13-13
PARITY	REFERENCES
J.H. C.M. A.D.	G.L.O. PLAT
WEATHER	FILE
HOT	ConocoPhillips Company

SCALE: 1" = 1000'

PDOP = 1.2

NO. 81 SURFACE LOCATION

LONGITUDE = 104°57'29.17" (104.955308)

LATITUDE = 39°35'56.64" (39.599067)

LONGITUDE = 104°57'29.17" (104.955308)

LATITUDE = 39°35'56.64" (39.599067)

LONGITUDE = 104°57'29.17" (104.955308)

LATITUDE = 39°35'56.64" (39.599067)

LONGITUDE = 104°57'29.17" (104.955308)

LATITUDE = 39°35'56.64" (39.599067)

LONGITUDE = 104°57'29.17" (104.955308)

LEGEND:

- 90° SYMBOL
- PROPOSED WELL HEAD
- SECTION CORNERS LOCATED
- SECTION CORNERS RE-ESTABLISHED. (Not Set on Ground)