

WELL LOCATION PLAT
T4S, R65W, 6th P.M.

ConocoPhillips Company

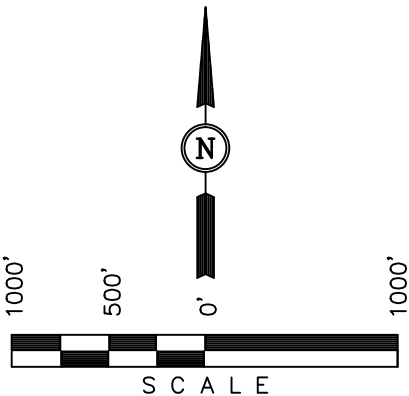
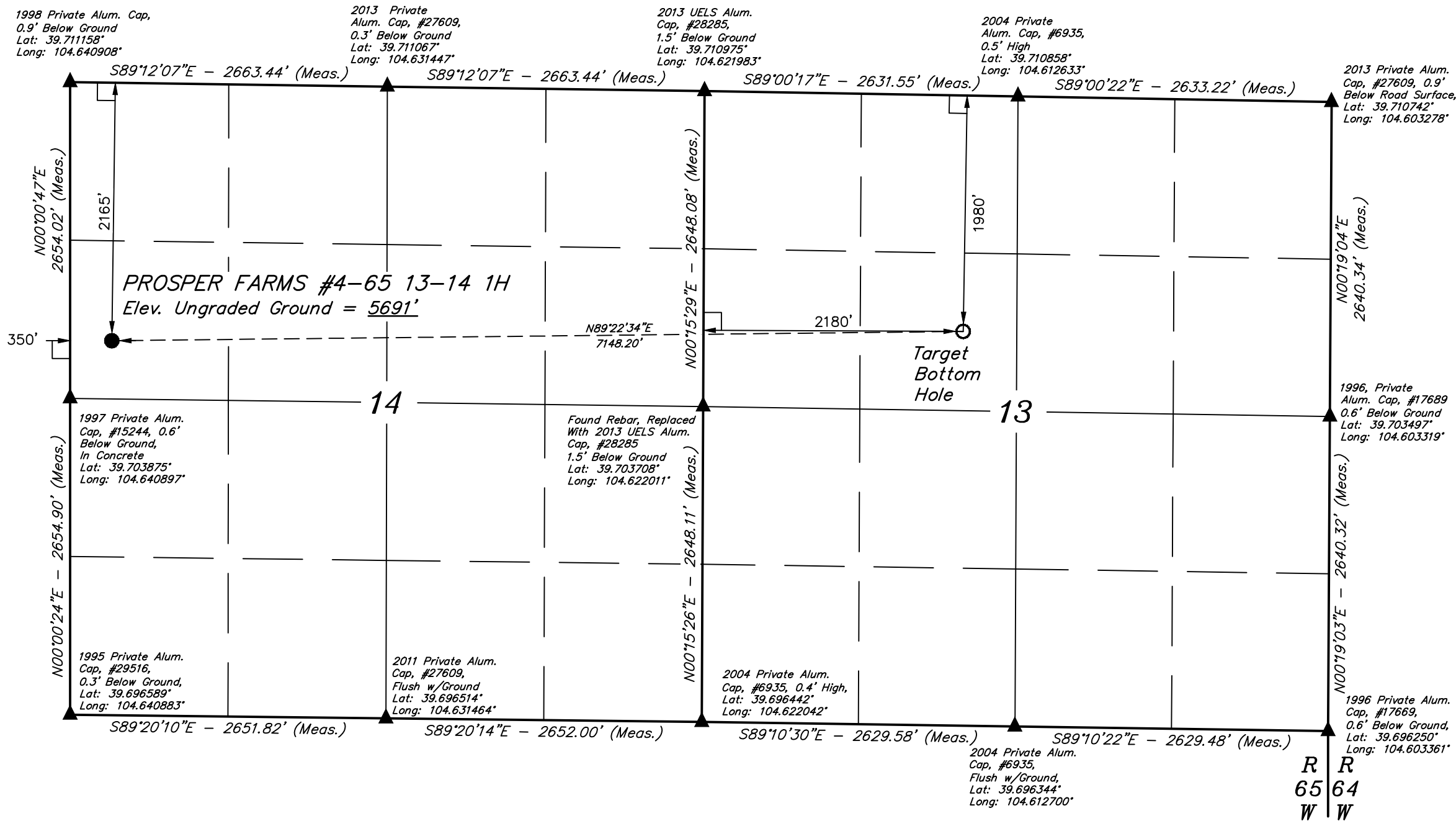
Well location, PROSPER FARMS #4-65 13-14 1H,
located as shown in the SW 1/4 NW 1/4 of
Section 14, T4S, R65W, 6th P.M., Arapahoe
County, Colorado.

BASIS OF ELEVATION

BENCHMARK 374 LOCATED ON THE SECTION LINE BETWEEN
SECTIONS 12 & 13, T5S, R64W, 6th. P.M., TAKEN FROM 1988
PUBLISHED DATUM BY THE UNITED STATES DEPARTMENT OF
THE INTERIOR, GEOLOGICAL SURVEY AS BEING 6054.61 FEET.

BASIS OF BEARINGS

BASIS OF BEARINGS IS A G.P.S. OBSERVATION.



CERTIFICATE
THIS IS TO CERTIFY THAT THE ABOVE PLAT WAS PREPARED FROM
FIELD NOTES OF ACTUAL SURVEYS MADE BY ME OR UNDER MY
SUPERVISION AND THAT THE SAME ARE TRUE AND CORRECT TO THE
BEST OF MY KNOWLEDGE AND BELIEF.
REGISTERED LAND SURVEYOR
REGISTRATION NO. 28285
STATE OF COLORADO
J.W. 10-29-13

- LEGEND:
- └─┘ = 90° SYMBOL
 - = PROPOSED WELL HEAD.
 - ▲ = SECTION CORNERS LOCATED.
 - = PROPOSED TARGET BOTTOM HOLE.

| NAD 83 (TARGET BOTTOM HOLE) | NAD 83 (SURFACE LOCATION) |
|--|--|
| LATITUDE = 39°42'19.60" (39.705444) | LATITUDE = 39°42'18.73" (39.705203) |
| LONGITUDE = 104°36'51.33" (104.614258) | LONGITUDE = 104°38'22.76" (104.639656) |
| NAD 27 (TARGET BOTTOM HOLE) | NAD 27 (SURFACE LOCATION) |
| LATITUDE = 39°42'19.65" (39.705458) | LATITUDE = 39°42'18.78" (39.705217) |
| LONGITUDE = 104°36'49.45" (104.613736) | LONGITUDE = 104°38'20.88" (104.639133) |

| | | |
|---|--------------------------------|-------------------------|
| REV: 10-29-13 J.W. | | |
| UINTAH ENGINEERING & LAND SURVEYING 85 SOUTH 200 EAST - VERNAL, UTAH 84078 (435) 789-1017 | | |
| SCALE 1" = 1000' | DATE SURVEYED: 08-15-13 | DATE DRAWN: 08-17-13 |
| PARTY D.N. G.W. B.D.H. | REFERENCES G.L.O. PLAT | |
| WEATHER HOT | FILE ConocoPhillips Company | |

SECTION BREAKDOWN
T4S, R65W, 6th P.M.

ConocoPhillips Company

Well location, PROSPER FARMS #4-65 13-14 1H,
located as shown in the SW 1/4 NW 1/4 of
Section 14, T4S, R65W, 6th P.M., Arapahoe
County, Colorado.

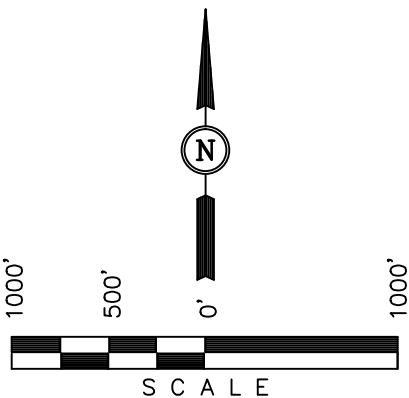
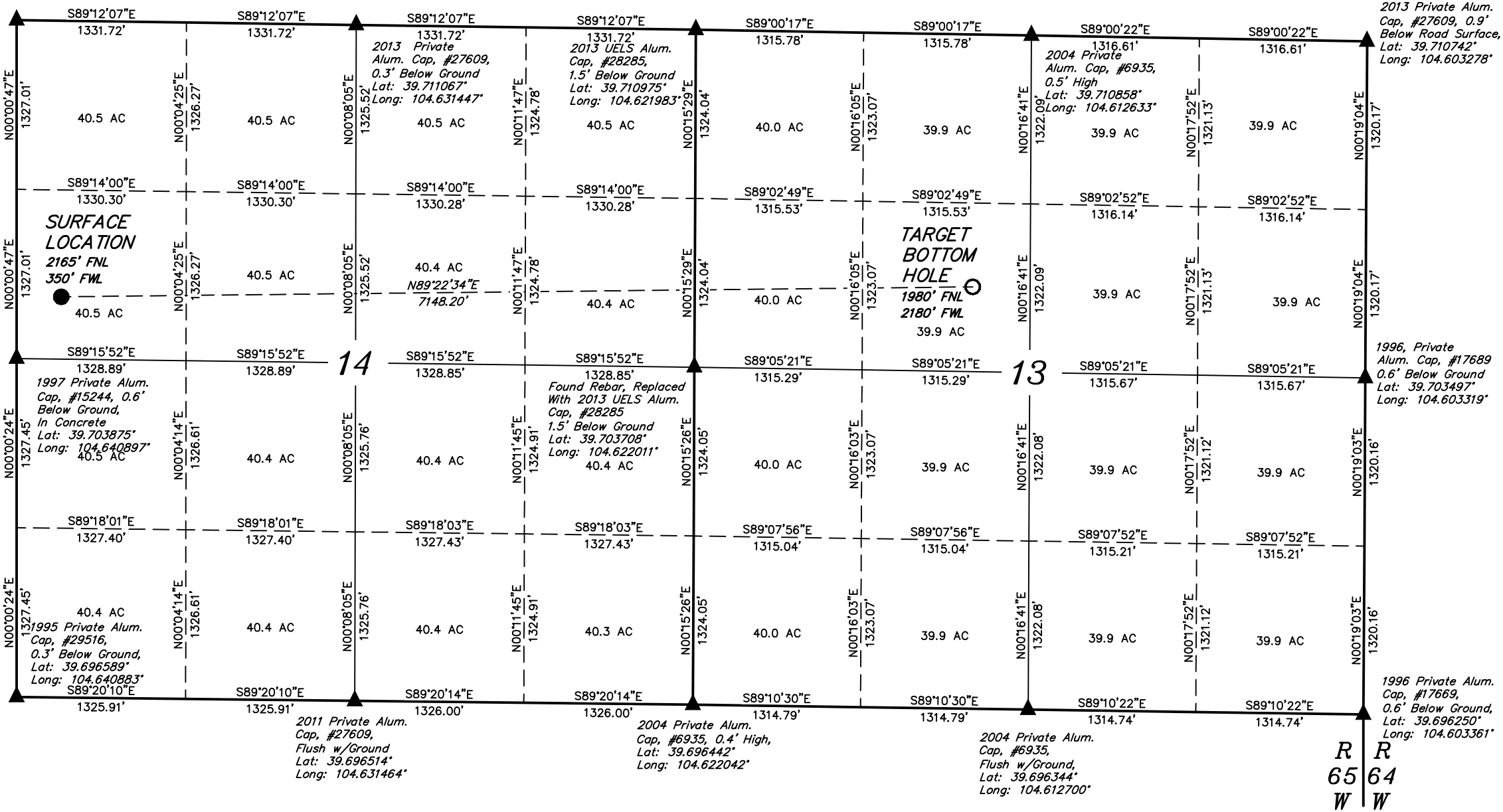
BASIS OF ELEVATION

BENCHMARK 374 LOCATED ON THE SECTION LINE BETWEEN
SECTIONS 12 & 13, T5S, R64W, 6th. P.M., TAKEN FROM 1988
PUBLISHED DATUM BY THE UNITED STATES DEPARTMENT OF
THE INTERIOR, GEOLOGICAL SURVEY AS BEING 6054.61 FEET.

BASIS OF BEARINGS

BASIS OF BEARINGS IS A G.P.S. OBSERVATION.

1998 Private Alum. Cap,
0.9' Below Ground
Lat: 39.711158°
Long: 104.640908°



CERTIFICATE
THIS IS TO CERTIFY THAT THE ABOVE PLAT WAS PREPARED FROM
FIELD NOTES OF ACTUAL SURVEYS MADE BY ME OR UNDER MY
SUPERVISION AND THAT THE SAME ARE TRUE AND CORRECT TO THE
BEST OF MY KNOWLEDGE AND BELIEF.
REGISTERED LAND SURVEYOR
REGISTRATION NO. 28285
STATE OF COLORADO
08-29-13

- LEGEND:
- = 90° SYMBOL
 - = PROPOSED WELL HEAD.
 - ▲ = SECTION CORNERS LOCATED.
 - = PROPSED TARGET BOTTOM HOLE.

PDOP = 1.8

| NAD 83 (TARGET BOTTOM HOLE) | NAD 83 (SURFACE LOCATION) |
|--|--|
| LATITUDE = 39°42'19.60" (39.705444) | LATITUDE = 39°42'18.73" (39.705203) |
| LONGITUDE = 104°36'51.33" (104.614258) | LONGITUDE = 104°38'22.76" (104.639656) |
| NAD 27 (TARGET BOTTOM HOLE) | NAD 27 (SURFACE LOCATION) |
| LATITUDE = 39°42'19.65" (39.705458) | LATITUDE = 39°42'18.78" (39.705217) |
| LONGITUDE = 104°36'49.45" (104.613736) | LONGITUDE = 104°38'20.88" (104.639133) |

REV: 10-29-13 J.W.

UINTAH ENGINEERING & LAND SURVEYING
85 SOUTH 200 EAST - VERNAL, UTAH 84078
(435) 789-1017

| | | |
|---------------------------|--------------------------------|-------------------------|
| SCALE 1" = 1000' | DATE SURVEYED: 08-15-13 | DATE DRAWN: 08-17-13 |
| PARTY D.N. G.W. B.D.H. | REFERENCES G.L.O. PLAT | |
| WEATHER HOT | FILE ConocoPhillips Company | |