



Physical Address: 345 Comanche St.
Mail to: Box 384, Kiowa, CO 80117
Ph. 303-621-8672 - Fax 303-621-7749
www.highprairiesurvey.com

Job # 13333 HICKOK #1-26
Rev: 1/20/14

Inv # 2850

High Prairie Surveying of Kiowa, Colorado, in accordance with a request from **Mary F Combs, Grand Mesa Operating Company** has determined the location of **HICKOK #1-26** to be **614' FNL and 200' FEL**, (90° off Section lines) of **SECTION 26**, Township **3s**, Range **53w** of the 6th Principal Meridian, **Washington County**, Colorado.

Date: Staked on 12/02/13 drawn on 12/05/13.

Re: Staked by Elijah Frane

Drawn: Drawn by Dustin Cotten

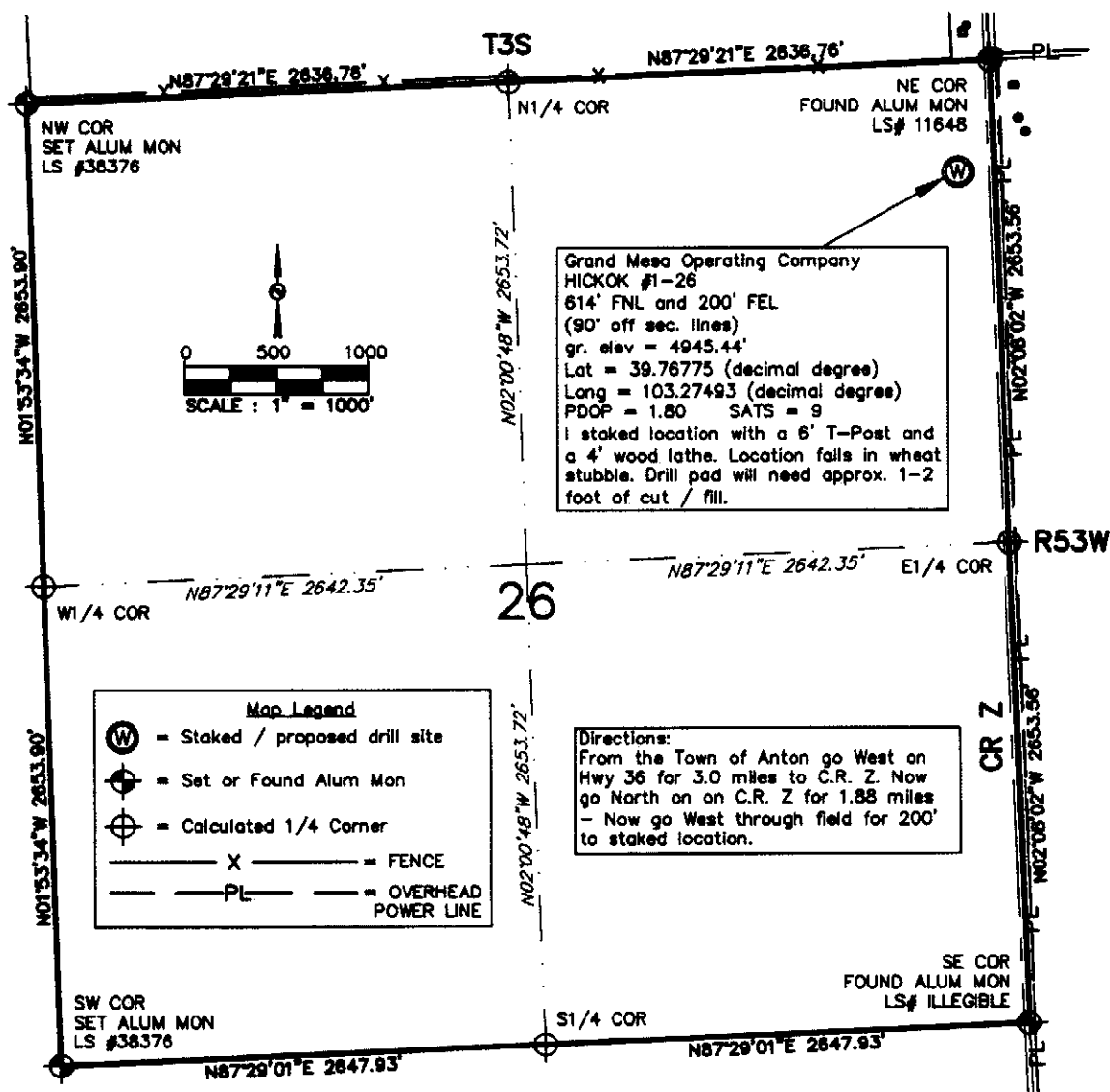
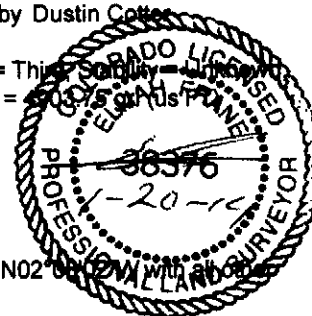
Basis of Elevation Spot: USGS BM = ANTON, PID = KJ0478, H-Order = Second, V-Order = Third, Station = 1, P-DOP = 1.8, SATS = 9, US NAD 83 CO-N, Lat. = 39.69930, Long. = W103.21294, Elevation = 5037.5 gr. elev.

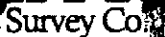
Notes: See Location Drawing for improvements within 500' of proposed well pad.

The ground elevation at staked location = 4945.44' gr.

This drawing does not represent a monumented survey or Land Survey Plat.

Basis of Bearing: Bearings were determined based on the East line of SECTION 26 to bear N02°00'02"W with all other bearings contained herein relative thereto.





Job # 13333 HICKOK #1-26
Rev: 1/20/14

Inv # 2850

Physical Address: 345 Comanche St.
Mail to: Box 384, Kiowa, CO 80117
Ph. 303-621-8672 - Fax 303-621-7749
www.highprairiesurvey.com

High Prairie Surveying of Kiowa, Colorado, in accordance with a request from **Mary F Combs, Grand Mesa Operating Company** has determined the location of **HICKOK #1-26** to be **614' FNL and 200' FEL**, (90° off Section lines) of **SECTION 26, Township 3s, Range 53w** of the 6th Principal Meridian, **Washington County, Colorado**.

Date: Staked on 12/02/13 drawn on 12/05/13.

Re: Staked by Elijah Frane

Drawn: Drawn by Dustin Cottes

Base of Elevation Spot: USGS BM = ANTON, PID = KJ0478, H-Order = Second, V-Order = Third, Stability = Unknown
P-DOP = 1.8, SATS = 9, US NAD 83 CO-N, Lat. = 39.69930, Long. = W103.21294, Elevation = 4903.75 m, KNT FRA

Notes: See Location Drawing for improvements within 500' of proposed well pad.

The ground elevation at staked location = 4945.44' gr.

This drawing does not represent a monumented survey or Land Survey Plat.

Basis of Bearing: Bearings were determined based on the East line of SECTION 26 to bear N02°08'02"W with all other bearings contained herein relative thereto.

