

WELL LOCATION PLAT T4S, R65W, 6th P.M.

ConocoPhillips Company

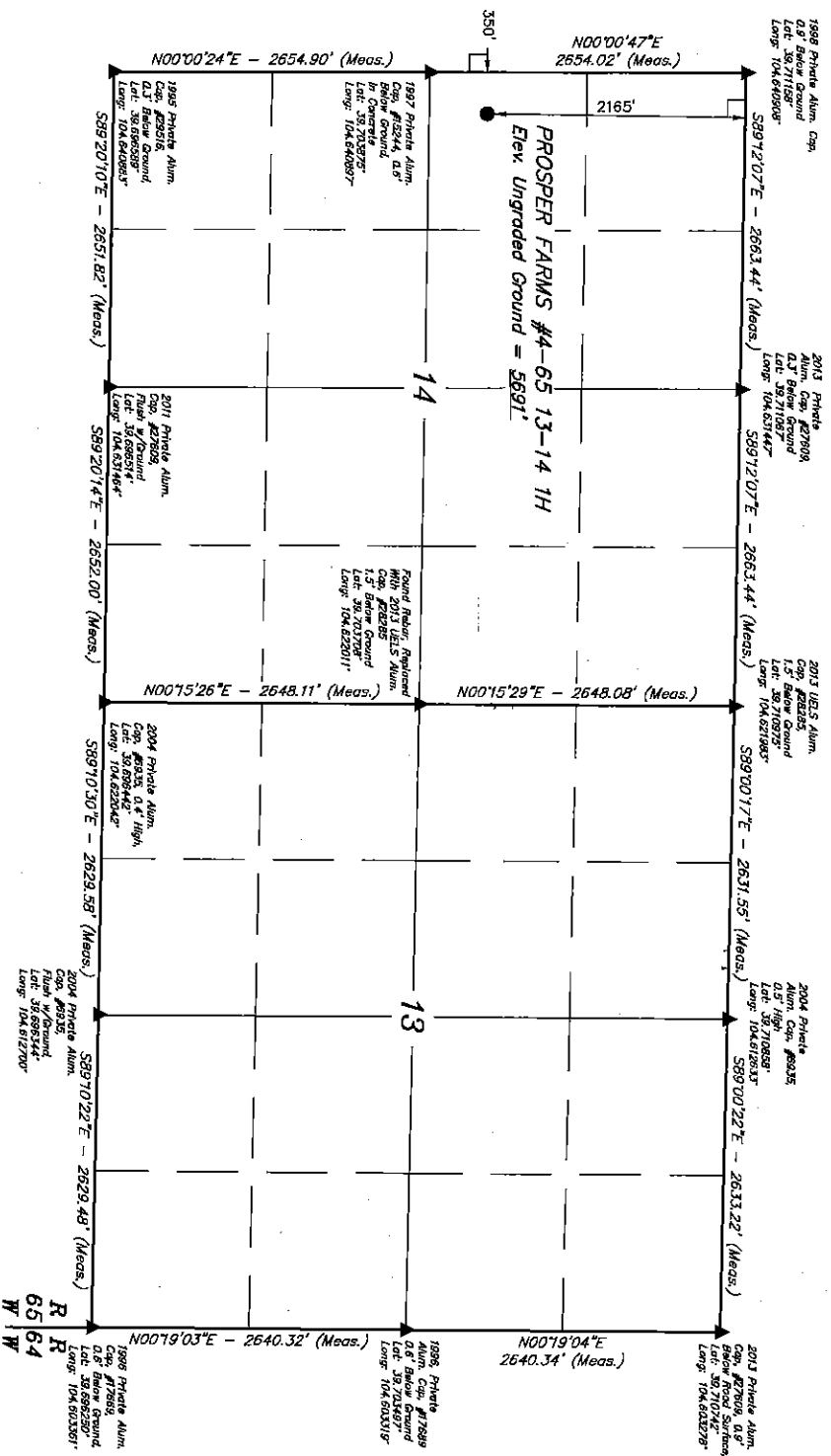
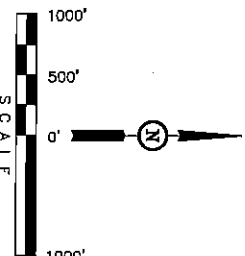
Well location, PROSPER FARMS #4-65 13-14 1H,
located as shown in the SW 1/4 NW 1/4 of
Section 14, T4S, R65W, 6th P.M., Arapahoe
County, Colorado.

BASIS OF ELEVATION

BENCHMARK 374 LOCATED ON THE SECTION LINE BETWEEN
SECTIONS 12 & 13, T5S, R64W, 6th P.M., TAKEN FROM 1998
PUBLISHED DATUM BY THE UNITED STATES DEPARTMENT OF
THE INTERIOR, GEOLOGICAL SURVEY AS BEING 8054.61 FEET.

BASIS OF BEARINGS

BASIS OF BEARINGS IS A C.P.S. OBSERVATION.



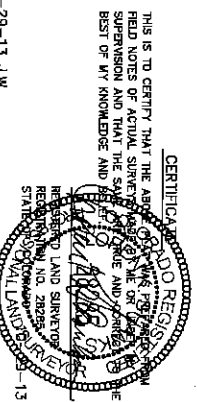
REV: 10-29-13 J.W.

UTIMAH ENGINEERING & LAND SURVEYING
86 SOUTH 200 EAST - VERNAL, UTAH 84078
(435) 789-1017

NAD 83 SURFACE LOCATION	
LATITUDE = 39°42'18.73" (39.705203)	DATE SURVEYED: 08-15-13
LONGITUDE = 104°46'22.75" (104.770550)	DATE DRAWN: 08-17-13
WELL 22 SURFACE LOCATION	REFERENCES: G.L.O. PLAT
LATITUDE = 39°42'18.73" (39.705203)	FILE: ConocoPhillips Company
LONGITUDE = 104°46'22.75" (104.770550)	
WEATHER: HOT	

LEGEND:

- = 90° SYMBOL
- = PROPOSED WELL HEAD.
- ▲ = SECTION CORNERS LOCATED.
- = PROPOSED TARGET BOTTOM HOLE.



THIS IS TO CERTIFY THAT THE ABOVE SURVEY WAS MADE BY THE SURVEYOR AND THAT THE SURVEY WAS MADE IN ACCORDANCE WITH THE BEST OF HIS KNOWLEDGE AND BELIEF.

SECTION BREAKDOWN T4S, R65W, 6th P.M.

ConocoPhillips Company

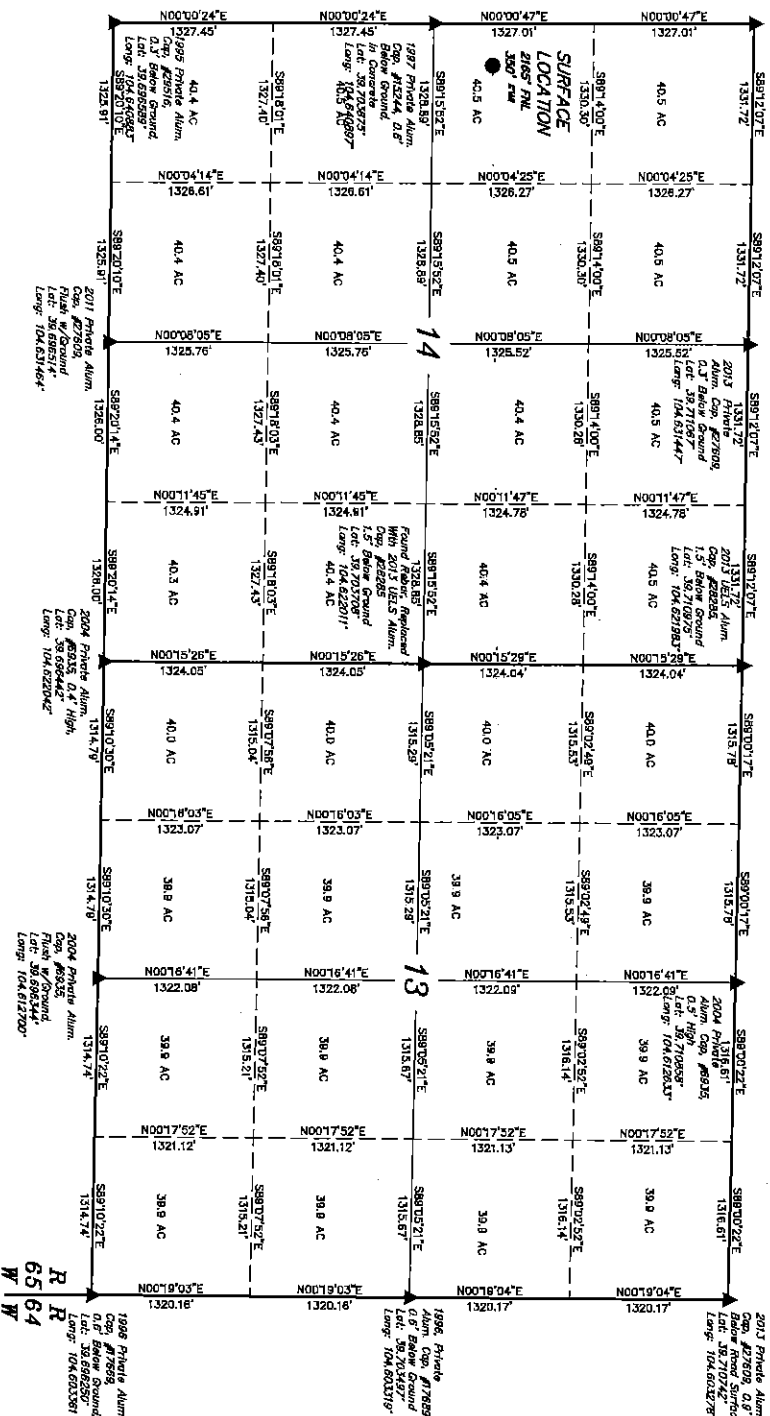
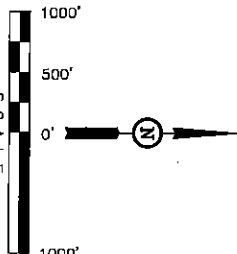
Well location, PROSPER FARMS #4-65 13-14 14, located as shown in the SW 1/4 NW 1/4 of Section 14, T4S, R65W, 6th P.M., Arapahoe County, Colorado.

BASIS OF ELEVATION

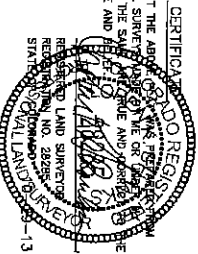
BENCHMARK 374 LOCATED ON THE SECTION LINE BETWEEN SECTIONS 12 & 13, T5S, R64W, 6th P.M., TAKEN FROM 1988 PUBLISHED DATUM BY THE UNITED STATES DEPARTMENT OF THE INTERIOR, GEOLOGICAL SURVEY AS BEING 6054.61 FEET.

BASIS OF BEARINGS

BASIS OF BEARINGS IS A G.P.S. OBSERVATION.



REV. 10-29-13 J.W.



UNITAH ENGINEERING & LAND SURVEYING
86 SOUTH 200 EAST - VERNAL, UTAH 84078
(435) 799-1017

NO. 13 (SURFACE LOCATION)	POOP = 1.8	SCALE	DATE SURVEYED	DATE DRAWN
LATITUDE = 39°42'13.75" (39.703233)		1" = 1000'	08-15-13	08-17-13
LONGITUDE = 104°32'22.75" (104.536850)				
NO. 14 (SURFACE LOCATION)				
LATITUDE = 39°42'13.75" (39.703233)				
LONGITUDE = 104°32'22.75" (104.536850)				
WEATHER				
HOT				
FILE				
ConocoPhillips Company				

- LEGEND:
- 90° SYMBOL
 - PROPOSED WELL HEAD
 - SECTION CORNERS LOCATED
 - PROPOSED TARGET BOTTOM HOLE