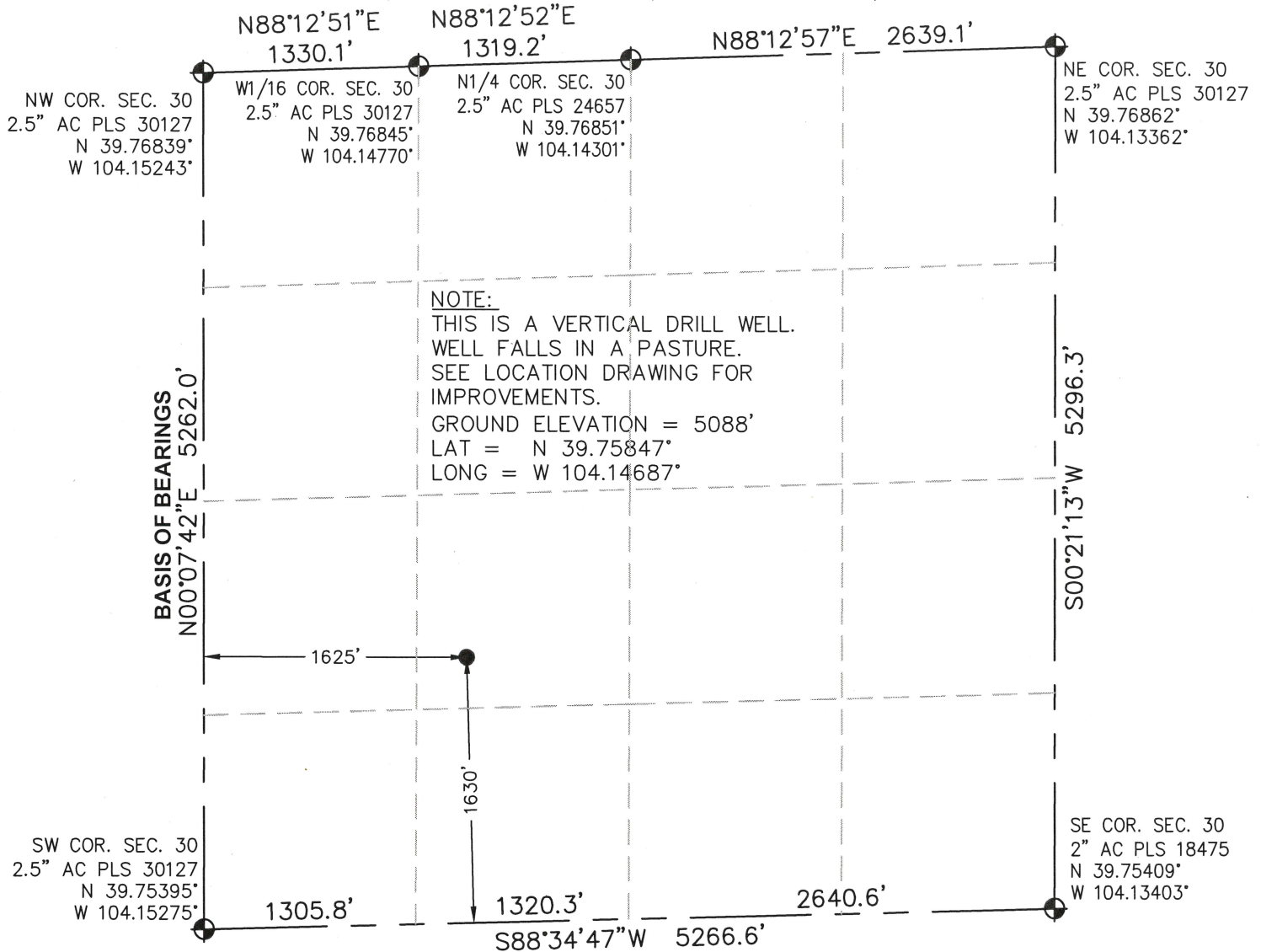


# WELL LOCATION CERTIFICATE

SECTION 30, TOWNSHIP 3 SOUTH, RANGE 60 WEST, 6TH P.M.



I HEREBY STATE TO SOUTHWESTERN ENERGY COMPANY THAT THE SURFACE LOCATION OF THE WELL NESS 3-60 #1-30 IS LOCATED 1625 FEET FROM THE WEST LINE AND 1630 FEET FROM THE SOUTH LINE, SECTION 30, T.3S., R.60W., 6TH P.M.  
FOR AND ON BEHALF OF NV5, INC.



THOMAS G. CARLSON, PLS 24657

THIS IS NOT A MONUMENTED BOUNDARY SURVEY, IT IS ONLY A  
DRAWING INTENDED TO DEPICT THE WELL LOCATION TO SECTION LINES.

## NOTE:

1. DISTANCES TO WELL SHOWN PERPENDICULAR TO SECTION LINES.
2. SHOWN DISTANCES ARE FIELD MEASURED - EXTERIOR SECTION LINES ARE DRAWN TO SCALE (BEST APPROX. OR FOUND MONUMENT).
3. LAT. & LONG. FOR THE SURFACE LOCATION ARE DIFFERENTIALLY CORRECTED USING DGPS WITH A PDOP VALUE OF 2.1.
4. ELEVATION SOURCE = USGS 7.5' QUAD MAP CONTOURS AT NGVD 1929 DATUM.

## LEGEND:

⊕ = FOUND/SET MONUMENT

● = PROPOSED WELL

0' 500' 1000'

SCALE IN FEET  
(1"=1000')



8000 S. Chester Street, Suite 200  
Centennial, CO 80112  
303.220.6400 TEL  
303.220.9001 FAX  
WWW.NV5.COM

WELL NAME: NESS 3-60 #1-30

LOCATION: ADAMS, CO; SW 1/4 SEC.30, T3S, R60W, 6TH P.M.

FIELD DATE: 12/17/2013

DRAWING DATE: 01/09/2014

PAGE NUMBER  
1  
OF 1 PAGE  
JOB NUMBER  
DVB057400