

T8N, R92W, 6th P.M.

2013 Alum. Cap
Flush W/Ground
#17492
Lat: 40.637519°
Long: 107.677344°

N89°58'21"W - 5280.64' (Meas.)

2013 Alum. Cap
Flush W/Ground
#17492
Lat: 40.637511°
Long: 107.696364°

BULLDOG #24-11H-892
Elev. Ungraded Ground = 6925'

N00°07'53"E - 5282.27' (Meas.)

NOTE:
THE PROPOSED PILOT HOLE FOR THIS WELL
IS LOCATED IN THE SW 1/4 NW 1/4 OF
SECTION 24, T8N, R92W, 6th P.M. AT 1979'
FNL 661' FWL. IT BEARS S52°56'51"E
1130.21' FROM THE PROPOSED WELL HEAD.

1991 Alum.
Cap, 0.2" High,
Lat: 40.623019°
Long: 107.696386°

2002 Alum.
Cap, 0.8" High,
Lat: 40.623026°
Long: 107.677353°

2002 Alum.
Cap, 0.7" High,
Lat: 40.623022°
Long: 107.677350°

N89°57'35"W - 2643.09' (Meas.)

N89°57'51"W - 2643.43' (Meas.)

1299'
2641.92' (Meas.)
242'
N00°05'46"E
N00°02'22"E - 2641.31' (Meas.)

AXIA ENERGY

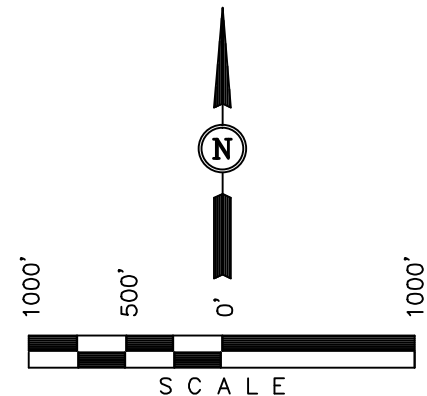
Well location, BULLDOG #24-11H-892 (SURFACE LOCATION), located as shown in the NE 1/4 NE 1/4 of Section 23, T8N, R92W, 6th P.M., Moffat County, Colorado.

BASIS OF ELEVATION

SPOT ELEVATION LOCATED AT THE SOUTHWEST CORNER OF SECTION 15, T7N, R91W, 6th P.M. TAKEN FROM THE CRAIG QUADRANGLE, COLORADO, MOFFAT COUNTY, 7.5 MINUTE QUAD (TOPOGRAPHIC MAP) PUBLISHED BY THE UNITED STATES DEPARTMENT OF THE INTERIOR, GEOLOGICAL SURVEY. SAID ELEVATION IS MARKED AS BEING 6672 FEET.

BASIS OF BEARINGS

BASIS OF BEARINGS IS A G.P.S. OBSERVATION.



CERTIFICATE

THIS IS TO CERTIFY THAT THE ABOVE WAS PREPARED FROM FIELD NOTES OF ACTUAL SURVEYS MADE BY ME OR UNDER MY SUPERVISION AND THAT THE SAME ARE TRUE AND CORRECT TO THE BEST OF MY KNOWLEDGE AND BELIEF.

[Signature]
REGISTERED LAND SURVEYOR
REGISTRATION NO. 17492
STATE OF COLORADO
09-17-13

REVISED: 09-17-13
REVISED: 08-30-13

PDOP = 1.6

LEGEND:

- └─┘ = 90° SYMBOL
- = PROPOSED WELL HEAD.
- ▲ = SECTION CORNERS LOCATED.

NAD 83 (SURFACE LOCATION)	
LATITUDE	= 40°38'02.24" (40.633956)
LONGITUDE	= 107°40'41.59" (107.678219)
NAD 27 (SURFACE LOCATION)	
LATITUDE	= 40°38'02.35" (40.633986)
LONGITUDE	= 107°40'39.33" (107.677592)
STATE PLANE NAD 83	
N:	1481216.98 E: 2395498.08
STATE PLANE NAD 27	
N:	481215.59 E: 1395655.86

UINTAH ENGINEERING & LAND SURVEYING
85 SOUTH 200 EAST - VERNAL, UTAH 84078
(435) 789-1017

SCALE 1" = 1000'	DATE SURVEYED: 04-05-13	DATE DRAWN: 04-12-13
PARTY G.M. C.I. M.D.	REFERENCES G.L.O. PLAT	
WEATHER COOL	FILE	AXIA ENERGY

T8N, R92W, 6th P.M.

E 1/4 Cor. Sec. 25
1991 Alum. Cap
0.2' High, Fence Post
Lat: 40.615801°
Long: 107.658313°

SCHOOL SECTION

1991 Alum.
Cap, 0.7' High,
Lat: 40.608528°
Long: 107.677342°

S89°57'44"E - 2644.73' (Meas.)

N89°47'E - 2639.34' (G.L.O.)

1991 Alum. Cap,
0.5' High,
Lat: 40.608531°
Long: 107.667819°

W 1/4 Cor. Sec. 31
2003 Private Alum.
Cap, Flush W/Ground
Lat: 40.608447°
Long: 107.658330°

SCHOOL SECTION

Lot 1

NOTE:
THE PROPOSED TARGET BOTTOM HOLE
BEARS S00°03'17"E 10601.28' FROM THE
PROPOSED PILOT HOLE WHICH IS LOCATED
IN THE SW 1/4 NW 1/4 OF SECTION 24,
T8N, R92W, 6th P.M. AT 1979' FNL 661'
FWL.

BULLDOG 24-11H-892
Target Bottom Hole

1991 Alum. Cap,
0.8' High, N-S Fence
Lat: 40.601310°
Long: 107.658324°

36

1991 Alum. Cap,
0.6' High,
Lat: 40.601286°
Long: 107.677350°

SW Cor. Sec. 31
C.C. 1910 G.L.O. Brass
Cap, 0.6' High, Fence Post
Lat: 40.601206°
Long: 107.658326°

Lot 5

Lot 4

Lot 3

Lot 2

T8N
T7N

NORTH - 2602.38' (G.L.O.)

H.E.
298

R
92
W

R
91
W

T8N

T7N

N89°55'E - 5280.00' (G.L.O.)

LEGEND:

└─┘ = 90° SYMBOL

● = PROPOSED WELL HEAD.

▲ = SECTION CORNERS LOCATED.

NAD 83 (TARGET BOTTOM HOLE)

LATITUDE = 40°36'10.80" (40.603000)
LONGITUDE = 107°40'29.90" (107.674972)

NAD 27 (TARGET BOTTOM HOLE)

LATITUDE = 40°36'10.91" (40.603031)
LONGITUDE = 107°40'27.65" (107.674347)

STATE PLANE NAD 83

N: 1469920.57 E: 2396122.32

STATE PLANE NAD 27

N: 469919.26 E: 1396280.12

AXIA ENERGY

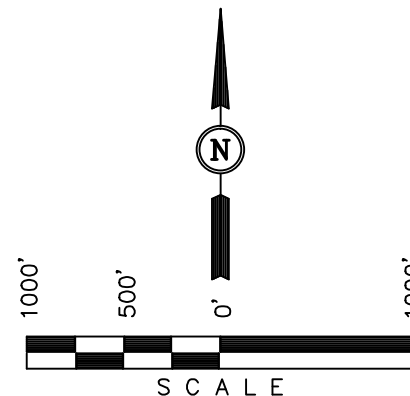
Well location, BULLDOG #24-11H-892 (TARGET
BOTTOM HOLE), located as shown in LOT 1 of
Section 36, T8N, R92W, 6th P.M., Moffat County,
Colorado.

BASIS OF ELEVATION

SPOT ELEVATION LOCATED AT THE SOUTHWEST CORNER OF
SECTION 15, T7N, R91W, 6th P.M. TAKEN FROM THE CRAIG
QUADRANGLE, COLORADO, MOFFAT COUNTY, 7.5 MINUTE QUAD
(TOPOGRAPHIC MAP) PUBLISHED BY THE UNITED STATES
DEPARTMENT OF THE INTERIOR, GEOLOGICAL SURVEY. SAID
ELEVATION IS MARKED AS BEING 6672 FEET.

BASIS OF BEARINGS

BASIS OF BEARINGS IS A G.P.S. OBSERVATION.



CERTIFICATE

THIS IS TO CERTIFY THAT THE ABOVE PLAT WAS PREPARED FROM
FIELD NOTES OF ACTUAL SURVEYS MADE BY ME OR UNDER MY
SUPERVISION AND THAT THE SAME ARE TRUE AND CORRECT TO THE
BEST OF MY KNOWLEDGE AND BELIEF.

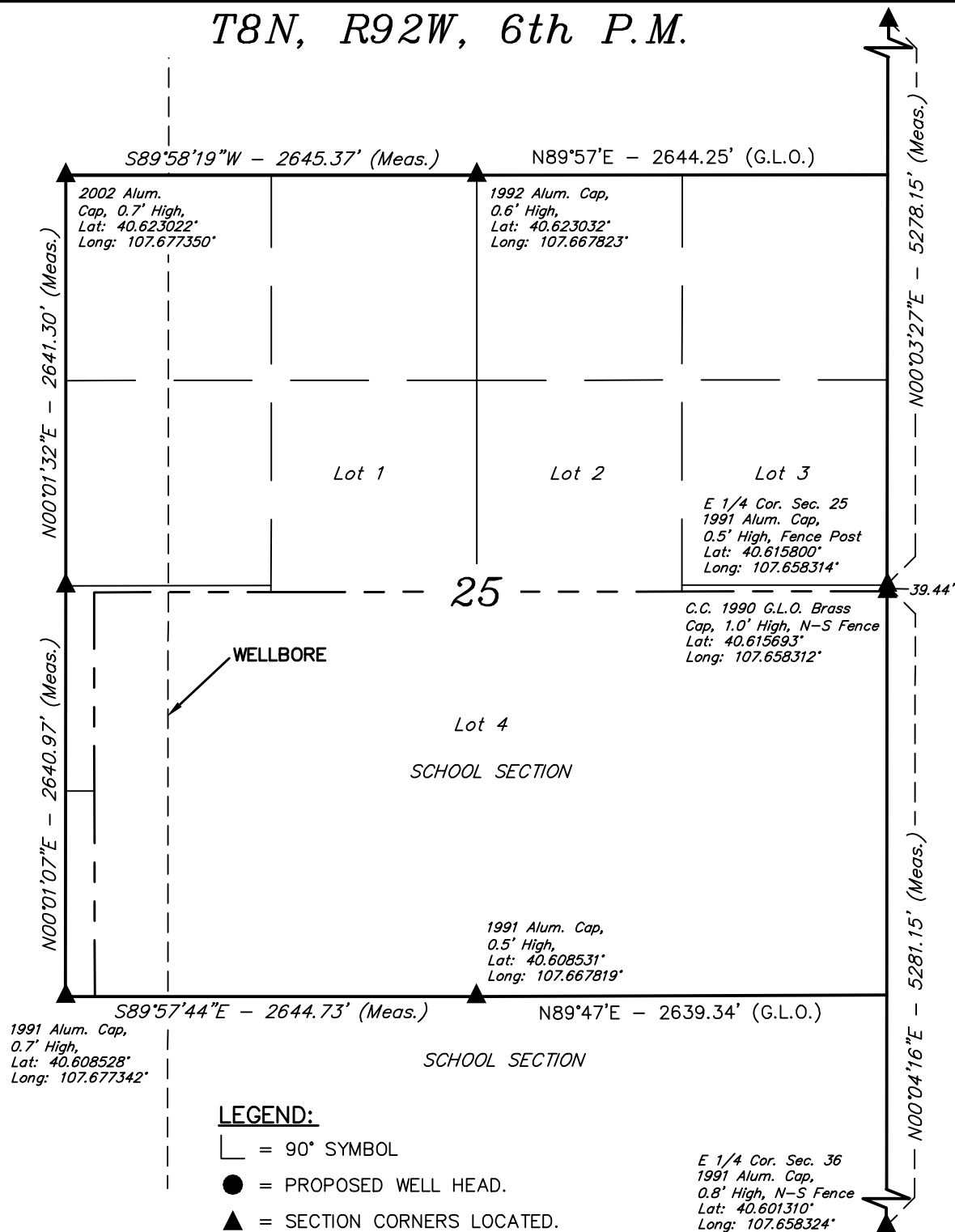
REGISTERED LAND SURVEYOR
REGISTRATION NO. 17492
STATE OF COLORADO

REVISED: 09-17-13
REVISED: 08-29-13

UINTAH ENGINEERING & LAND SURVEYING
85 SOUTH 200 EAST - VERNAL, UTAH 84078
(435) 789-1017

SCALE 1" = 1000'	DATE SURVEYED: 04-05-13	DATE DRAWN: 04-12-13
PARTY G.M. C.I. M.D.	REFERENCES G.L.O. PLAT	
WEATHER COOL	FILE AXIA ENERGY	

T8N, R92W, 6th P.M.



LEGEND:

└─ = 90° SYMBOL

● = PROPOSED WELL HEAD.

▲ = SECTION CORNERS LOCATED.

AXIA ENERGY

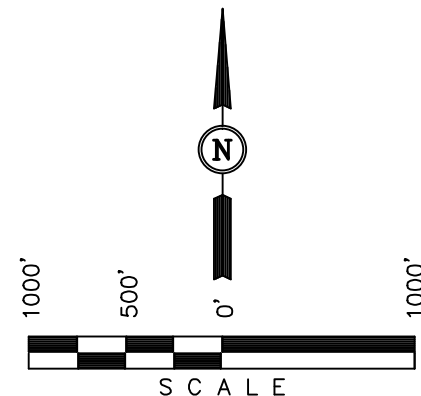
Well location, BULLDOG #24-11H-892 (Wellbore), located as shown in the W 1/2 W 1/2 of Section 25, T8N, R92W, 6th P.M., Moffat County, Colorado.

BASIS OF ELEVATION

SPOT ELEVATION LOCATED AT THE SOUTHWEST CORNER OF SECTION 15, T7N, R91W, 6th P.M. TAKEN FROM THE CRAIG QUADRANGLE, COLORADO, MOFFAT COUNTY, 7.5 MINUTE QUAD (TOPOGRAPHIC MAP) PUBLISHED BY THE UNITED STATES DEPARTMENT OF THE INTERIOR, GEOLOGICAL SURVEY. SAID ELEVATION IS MARKED AS BEING 6672 FEET.

BASIS OF BEARINGS

BASIS OF BEARINGS IS A G.P.S. OBSERVATION.



CERTIFICATE

THIS IS TO CERTIFY THAT THE ABOVE PLAT WAS PREPARED FROM FIELD NOTES OF ACTUAL SURVEYS MADE BY ME OR UNDER MY SUPERVISION AND THAT THE SAME ARE TRUE AND CORRECT TO THE BEST OF MY KNOWLEDGE AND BELIEF.

REGISTERED LAND SURVEYOR
REGISTRATION NO. 17492
STATE OF COLORADO

REVISED: 09-17-13

UINTAH ENGINEERING & LAND SURVEYING
85 SOUTH 200 EAST - VERNAL, UTAH 84078
(435) 789-1017

SCALE 1" = 1000'	DATE SURVEYED: 04-05-13	DATE DRAWN: 08-29-13
PARTY G.M. C.I. M.D.	REFERENCES G.L.O. PLAT	
WEATHER COOL	FILE AXIA ENERGY	