

1625 Broadway  
Suite 2000  
Denver, CO 80202

Tel: 303.228.4000  
Fax: 303.228.4280

www.nobleenergyinc.com



1/23/14

Colorado Oil and Gas Conservation Commission  
The Chancery Building  
1120 Lincoln Street, Suite 801  
Denver, CO 80203  
Attn: Mr. Matt Lepore, Director

RE: NCLP AA06-69HNC  
QQ Township 6 North, Range 63 West, 6th P.M.  
Weld County, Colorado

Mr. Lepore:

Noble Energy, Inc. ("NEI") is planning to drill the captioned boundary well in accordance with the provisions of COGCC Rule 318A.e.

NEI's proposed wellbore spacing unit consists of the S/2S/2 of Section 32, T7N-R63W and the N/2N/2 of Section 5, T 6N, R63W, creating a 320-acre wellbore spacing unit for the Niobrara formation. NEI is not the only owner within the proposed wellbore spacing unit and as such provided notice to the remaining owner(s) within said proposed spacing unit as required under COGCC Rule 318A(I).e(6). Copies of the required notice letter(s) is/are on file at the NEI offices. The required thirty (30) day notice period has elapsed absent the receipt by NEI of an objection to said proposal by the owner(s) within the proposed spacing unit for this well.

Enclosed are copies of the following documents to assist you in your review and approval of NEI's proposed APD for the captioned well:

- Map & plat illustrating proposed wellbore spacing unit.

Thank you for your attention to the enclosed. NEI respectfully requests that the COGCC review the enclosed information and approve the Application for Permit to Drill the captioned well.

Sincerely,

Susan Miller  
Regulatory Analyst  
Noble Energy Inc.

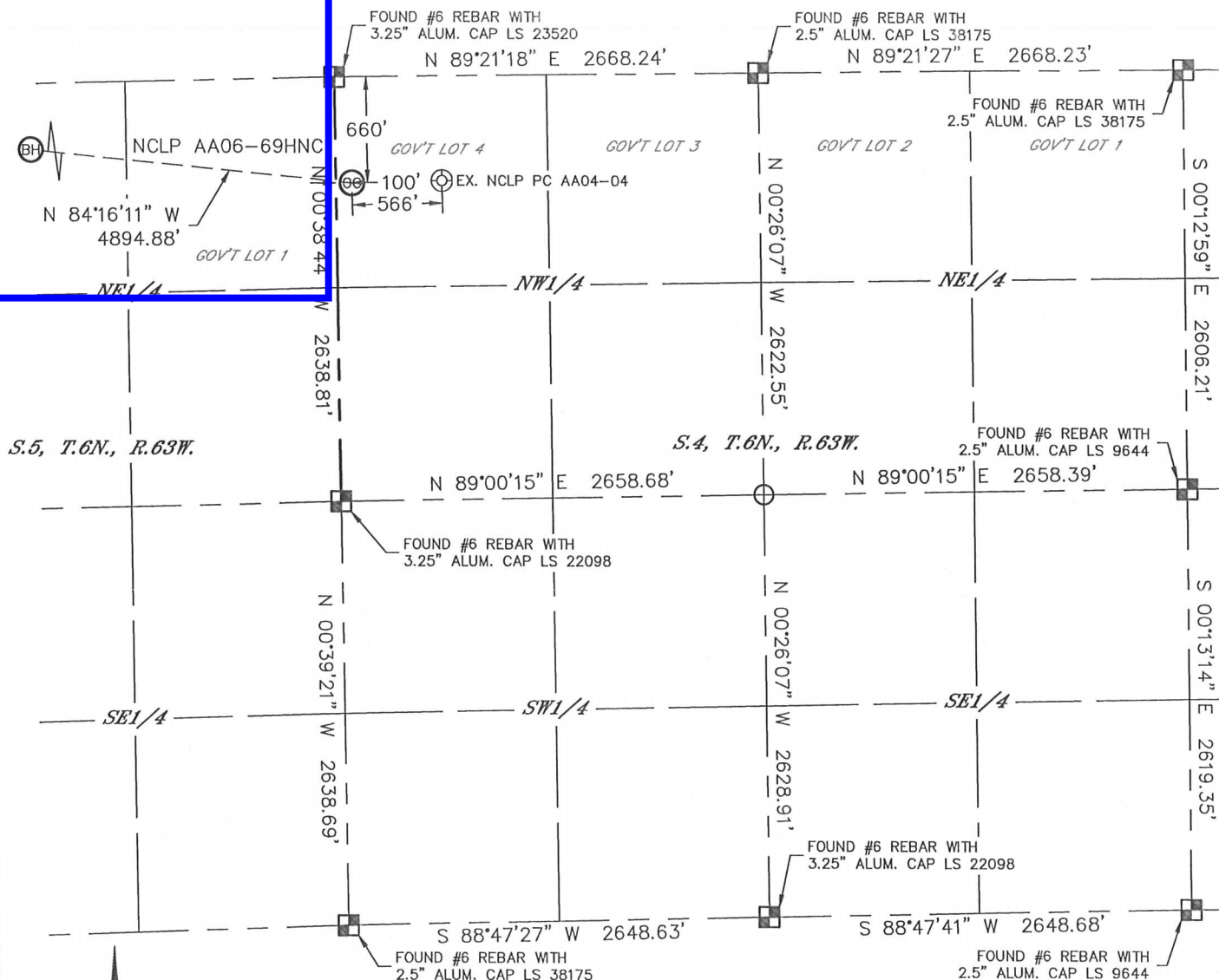


Lat40°, Inc. 1635 Foxtrail Drive, Suite 325 Loveland, CO 970-776-3321

# WELL LOCATION CERTIFICATE

THIS MAP DOES NOT REPRESENT A BOUNDARY SURVEY

SECTION: 4  
TOWNSHIP: 6N  
RANGE: 63W



In accordance with a request from Greg Wilson with Noble Energy Inc., Lat40°, Inc. has determined the surface location of the NCLP AA06-69HNC to be 660' from the NORTH line and 100' from the WEST line as measured at right angles from the section lines of Section 4, Township 6 North, Range 63 West and the bottom hole to be 60' from the NORTH line and 535' from the WEST line as measured at right angles from the section lines of Section 5, Township 6 North, Range 63 West of the Sixth Principal Meridian, County of Weld, State of Colorado.

I hereby state that this Well Location Certificate was prepared by me, or under my direct supervision, that the fieldwork was completed on 7/12/2013, for and on behalf of Noble Energy Inc. That this is not a Land Survey Plat or an Improvement Survey Plat, and that it is not to be relied upon for establishment of fence, building, or other future improvement lines.

## NOTE:

- 1) Bearings shown are Grid Bearings of the Colorado State Plane Coordinate System, North Zone, North American Datum 1983/2007. The lineal dimensions as contained herein are based upon the "U.S. Survey Foot."
  - 2) Ground elevations are based on an observed GPS elevation (NAVD 1988 DATUM).
  - 3) IMPROVEMENTS: See LOCATION DRAWING for all visible improvements within 500' of disturbed area.
  - 4) SURFACE USE: RANGELAND/PASTURE
  - 5) INSTRUMENT OPERATOR: ADAM KELLY
  - 6) NEAREST EXISTING WELL: NCLP PC AA04-04, 566'
- NEAREST CULTURAL ITEMS:  
BUILDING: ±2278' NW  
BUILDING UNIT: ±2278' NW  
HIGH OCCUPANCY BUILDING UNIT: 1001'+  
DESIGNATED OUTSIDE ACTIVITY AREA: 1001'+  
PUBLIC ROAD: COUNTY ROAD 74, 652' N  
ABOVEGROUND UTILITY: 628' N  
RAILROAD: 5280'+  
PROPERTY LINE: 660' N

## SURFACE LOCATION

LAT: 40.52119°N  
LONG: 104.45086°W  
PDOP: 1.2  
ELEV: 4711'  
1/4, 1/4: NW1/4NW1/4 (GOV'T LOT 4)

## BOTTOM HOLE

LAT: 40.52269°N  
LONG: 104.46835°W

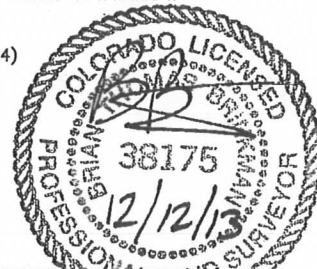
## LEGEND

- = ALIQUOT MONUMENT AS DESCRIBED  
○ = CALCULATED POSITION

## SHEET 1 OF 2

Brian T. Brinkman—On behalf of Lat40°, Inc.  
Colorado Licensed Professional  
Land Surveyor No. 38175

DATE: 12/12/2013  
PROJECT#: 2013042



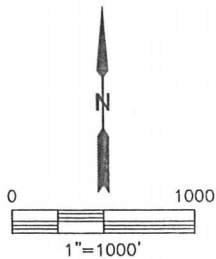
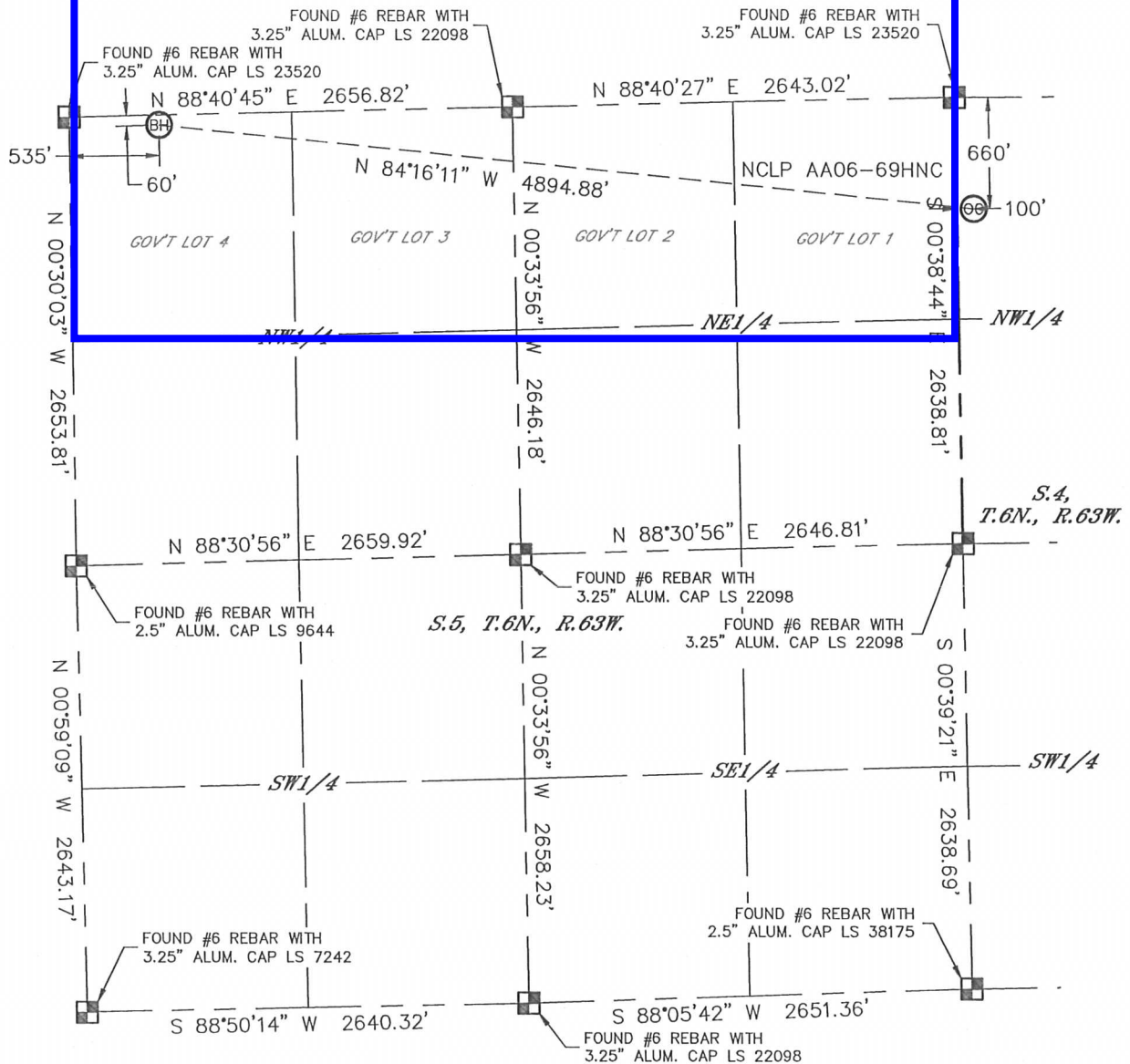


Lat40°, Inc. 1635 Foxtrail Drive, Suite 325 Loveland, CO 970-776-3321

## WELL LOCATION CERTIFICATE

THIS MAP DOES NOT REPRESENT A BOUNDARY SURVEY

SECTION: 4  
TOWNSHIP: 6N  
RANGE: 63W



**NOTE**  
According to Colorado law, you must commence any legal action based upon any defect in this W.L.C. within three years after you discover such defect. In no event, may any action based upon any defect in this survey be commenced more than ten years after the date of the certificate shown hereon. (13-80-105 C.R.S.)

### LEGEND

- = ALIQUOT MONUMENT AS DESCRIBED
- = CALCULATED POSITION

*SHEET 2 OF 2*

Brian T. Brinkman—On behalf of Lat40°, Inc.  
Colorado Licensed Professional  
Land Surveyor No. 38175

DATE: 12/12/2013  
PROJECT#: 2013042



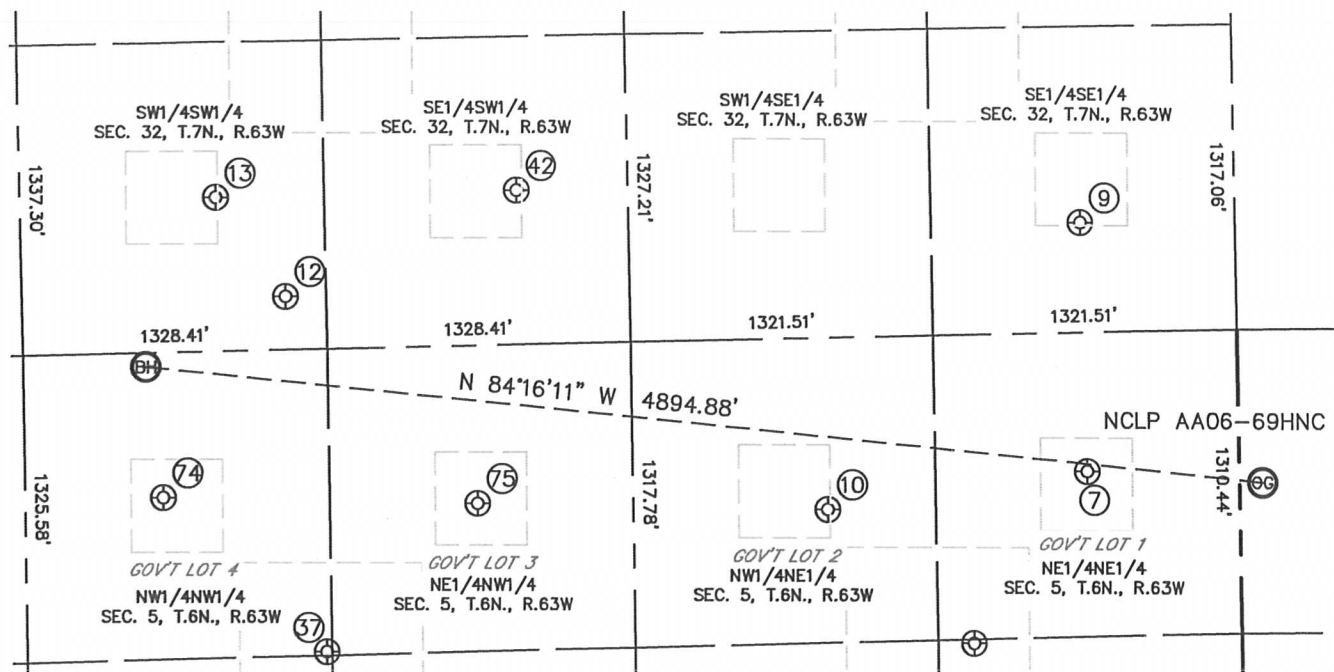


Lat40°, Inc. 1635 Foxtrail Drive, Suite 325 Loveland, CO 970-776-3321

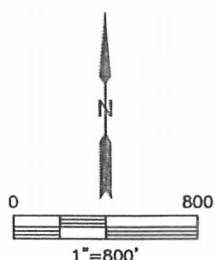
# SITE SKETCH

NCLP AA06-69HNC

SECTION: 4  
TOWNSHIP: 6N  
RANGE: 63W



WELL #	WELL NAME	SHL FOOTAGE				SHL LAT °	SHL LONG °	PDOP	ELEV (FT.)	1/4/1/4
7	NCLP USX AA 5-1	600	FNL	659	FEL	40.52134	-104.45359	1.4	4713	NENE
9	RAY 32-44	473	FSL	671	FEL	40.52428	-104.45363	1.5	4720	SESE
10	BIXLER 31-5	741	FNL	1795	FEL	40.52091	-104.45767	1.4	4721	NWNE
12	ARMKNECHT 14-32H	230	FSL	1150	FWL	40.52351	-104.46614	1.8	4712	SWSW
13	CBO 14-32	662	FSL	853	FWL	40.52468	-104.46721	1.7	4723	SWSW
37	FOSS - USX AA 5-19	1305	FNL	1307	FWL	40.51930	-104.46559	1.6	4717	NWNW
42	CBO 24-32	665	FSL	2171	FWL	40.52473	-104.46248	2.1	4724	SESW
74	FOSS USX AA 5-4	625	FNL	602	FWL	40.52114	-104.46812	2.1	4737	NWNW
75	FOSS USX AA 5-3	681	FNL	1977	FWL	40.52103	-104.46317	3.0	4711	NENW



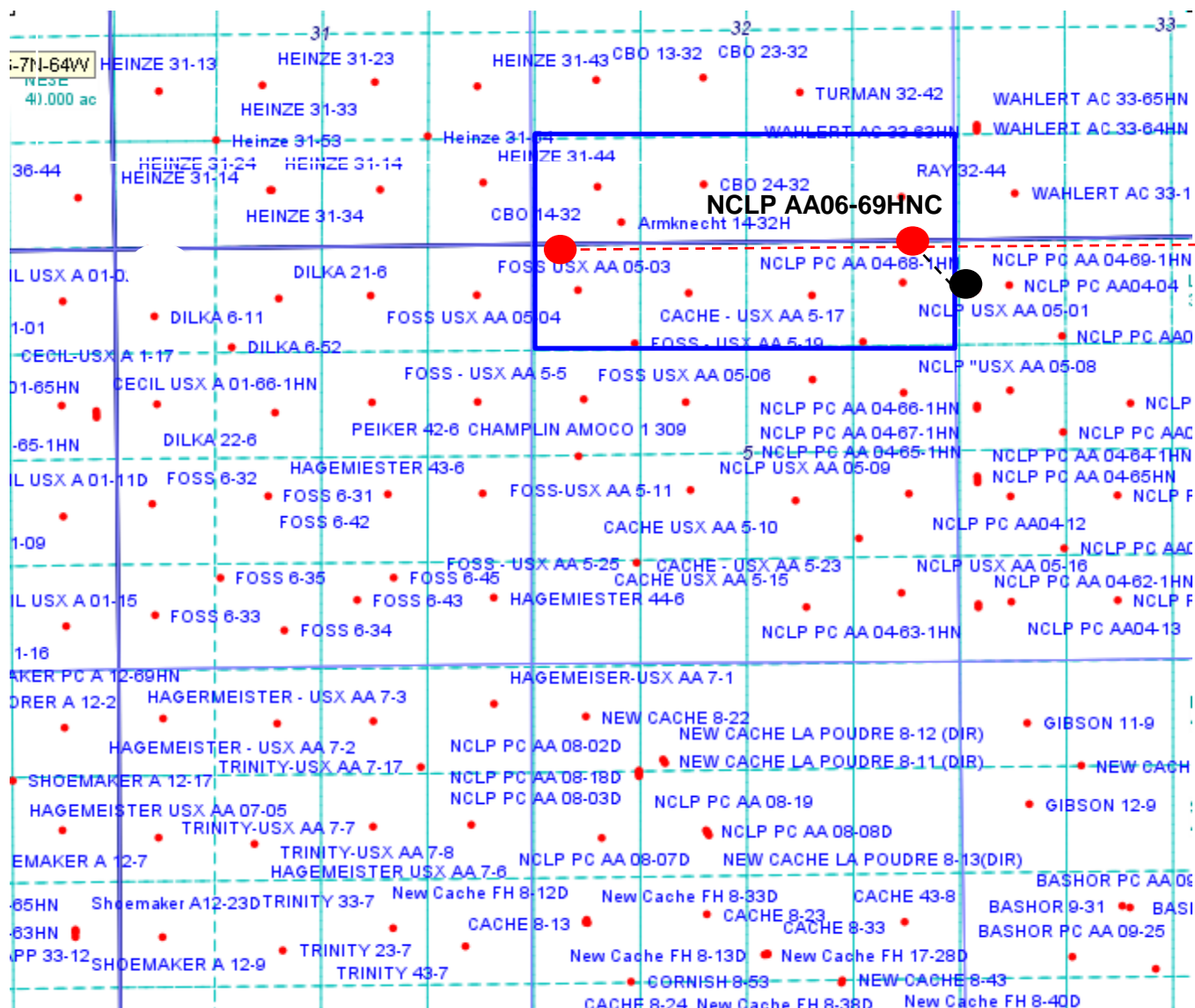
DATE: 12/12/2013  
PROJECT#: 2013042

# NCLP AA06-69HNC

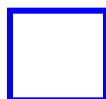
Proposed Spacing Unit – Noble Energy, Inc.

S/2S/2 Section 32, Township 7 North, Range 63 West

N/2N/2 Section 5, Township 6 North, Range 63 West



Legend



Proposed 320 acre spacing unit

● Bottom Hole Location