

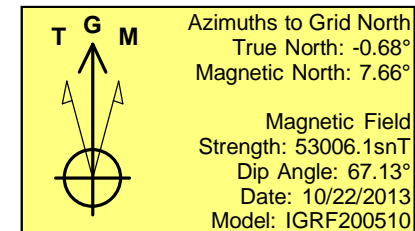
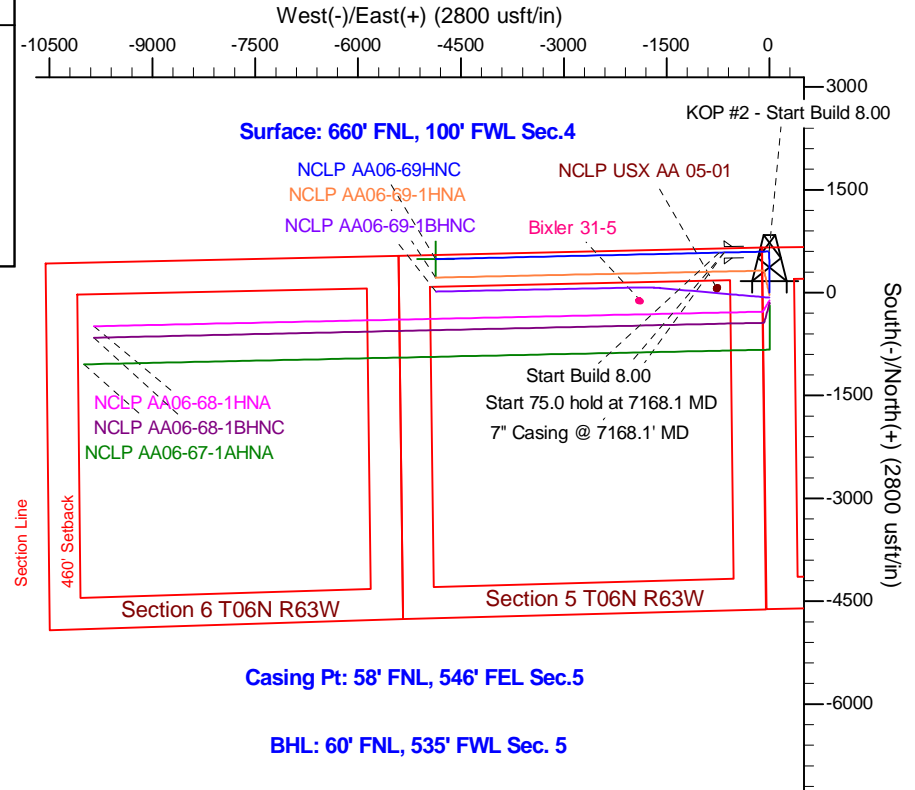
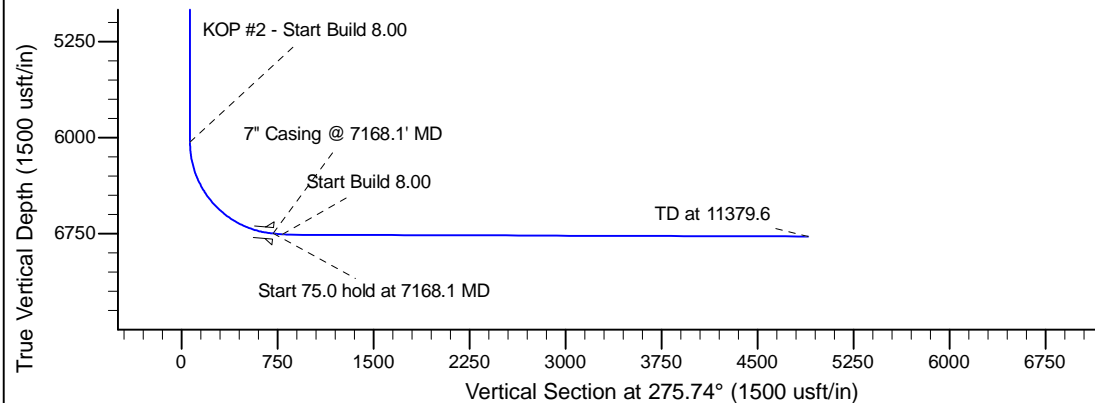
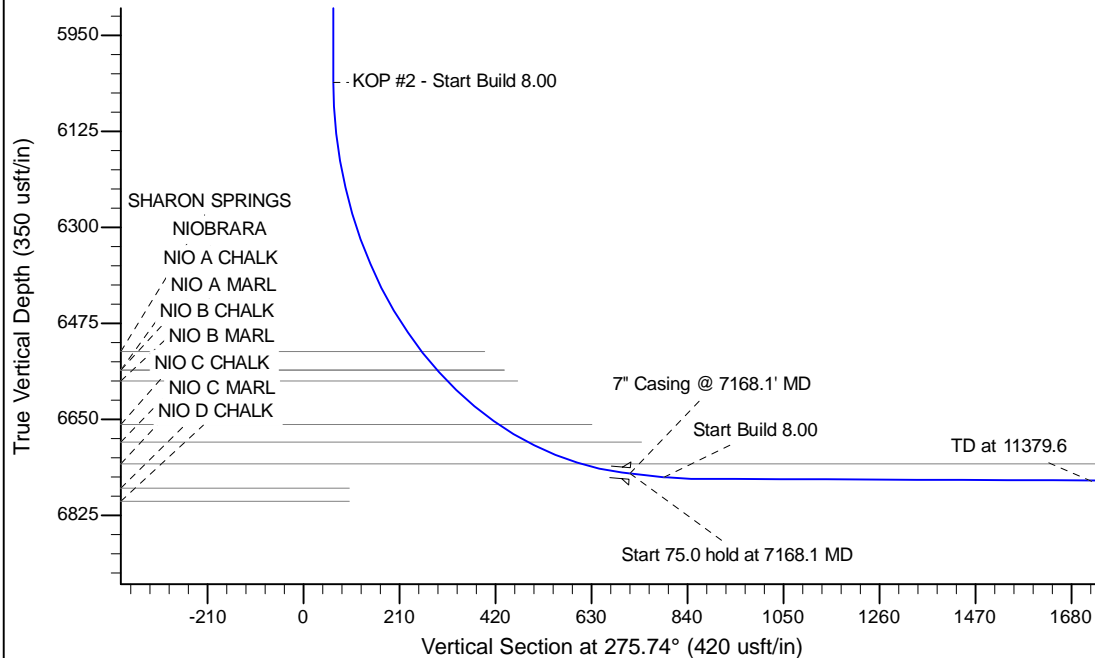
Project: Wattenberg Field
 Site: AA (Sec.4-T06N-R63W) Weld County, CO
 Well: NCLP AA06-69HNC
 Wellbore: Original Drilling
 Design: APD - Rev 1

Northern Region Drilling - Working

Geodetic System: US State Plane 1983
 Datum: North American Datum 1983
 Ellipsoid: GRS 1980
 Zone: Colorado Northern Zone
 System Datum: Mean Sea Level

SECTION DETAILS

Sec	MD	Inc	Azi	TVD	+N/-S	+E/-W	Dleg	TFace	VSec	Target
1	0.0	0.00	0.00	0.0	0.0	0.0	0.00	0.00	0.0	
2	1500.0	0.00	0.00	1500.0	0.0	0.0	0.00	0.00	0.0	
3	2251.7	15.03	359.52	2243.1	98.1	-0.8	2.00	359.52	10.6	
4	3808.8	15.03	359.52	3746.9	501.9	-4.2	0.00	0.00	54.4	
5	4560.5	0.00	0.00	4490.0	600.0	-5.0	2.00	180.00	65.0	
6	6105.6	0.00	0.00	6035.1	600.0	-5.0	0.00	0.00	65.0	
7	7168.1	85.00	268.70	6748.6	585.1	-658.6	8.00	268.70	713.8	
8	7243.1	85.00	268.70	6755.1	583.4	-733.3	0.00	0.00	788.0	
9	7303.1	89.80	268.70	6757.9	582.1	-793.2	8.00	0.00	847.4	
10	11379.6	89.80	268.70	6772.1	489.4	-4868.6	0.00	0.00	4893.2	NCLP AA06-69HNC BHL 60'FNL, 535'FWL



WELL DETAILS: NCLP AA06-69HNC					
		Ground Level: 4711.0			
	North	East	Lat	Long	
0.0	0.0	1434435.57	3291667.20	40.521190	-104.450860
Plan: APD - Rev 1 (NCLP AA06-69HNC/Original Drilling)					
Created By: Shailay Jewell			Date: 11:43, January 02 2014		
Checked: _____			Date: _____		
Reviewed: _____			Date: _____		
Approved: _____			Date: _____		