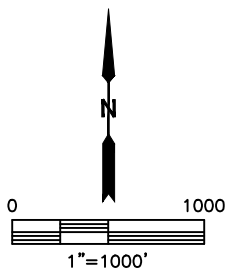
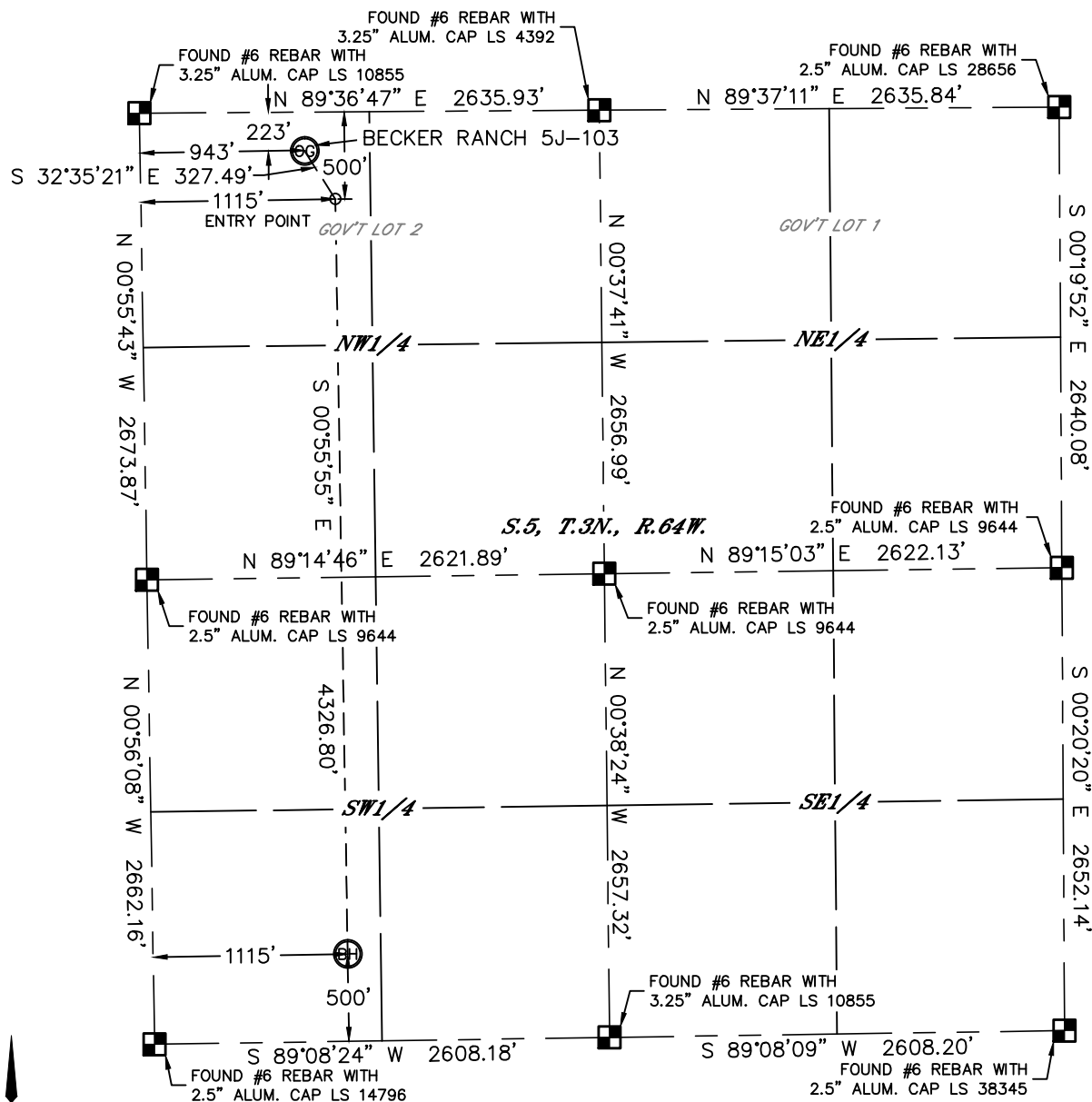


# WELL LOCATION CERTIFICATE

THIS MAP DOES NOT REPRESENT A BOUNDARY SURVEY



SECTION: 5  
TOWNSHIP: 3N  
RANGE: 64W



In accordance with a request from Mac Neumann with PDC ENERGY Lat40', Inc. has determined the surface location of the BECKER RANCH 5J-103 to be 223' from the NORTH line and 943' from the WEST line and the bottom hole to be 500' from the SOUTH line and 1115' from the WEST line as measured at right angles from the section lines of Section 5, Township 3 North, Range 64 West of the Sixth Principal Meridian, County of Weld, State of Colorado.

I hereby state that this Well Location Certificate was prepared by me, or under my direct supervision, that the fieldwork was completed on 7/17/2013, for and on behalf of PDC ENERGY. That this is not a Land Survey Plat or an Improvement Survey Plat, and that it is not to be relied upon for establishment of fence, building, or other future improvement lines.

NOTE:

- 1) Bearings shown are Grid Bearings of the Colorado State Plane Coordinate System, North Zone, North American Datum 1983/2007. The lineal dimensions as contained herein are based upon the "U.S. Survey Foot."
- 2) Ground elevations are based on an observed GPS elevation (NAVD 1988 DATUM).
- 3) IMPROVEMENTS: See LOCATION DRAWING for all visible improvements within 400' of disturbed area.
- 4) SURFACE USE: RANGELAND
- 5) INSTRUMENT OPERATOR: ADAM KELLY
- 6) NEAREST CULTURAL ITEMS:
- BUILDING: 699' NE
- BUILDING UNIT: BU1 699' NE
- HIGH OCCUPANCY BUILDING UNIT: 5280'+
- DESIGNATED OUTSIDE ACTIVITY AREA: 5280'+
- PUBLIC ROAD: 208' N
- ABOVE GROUND UTILITY: 262' N
- RAILROAD: 5280'+
- PROPERTY LINE: 223' N
- LEGEND
-  = ALIQUOT MONUMENT
-  = CALCULATED POSITION

SURFACE LOCATION

LAT: 40.26117°N  
LONG: 104.58086°W  
PDOP: 1.3  
ELEV: 4819'  
1/4.1/4: NW1/4NW1/4


BOTTOM HOLE

LAT: 40.24853°N  
LONG: 104.58015°W

## ENTRY POINT

LAT: 40.26041°N  
LONG: 104.58024°W

### LEGEND

-  = ALIQUOT MONUMENT AS DESCRIBED  
 = CALCULATED POSITION

Brian T. Brinkman—On behalf of L&L, Inc.  
Colorado Licensed Professional Land Surveyor No. 38175  
DATE: 8/26/2013  
PROJECT#: 2013107

