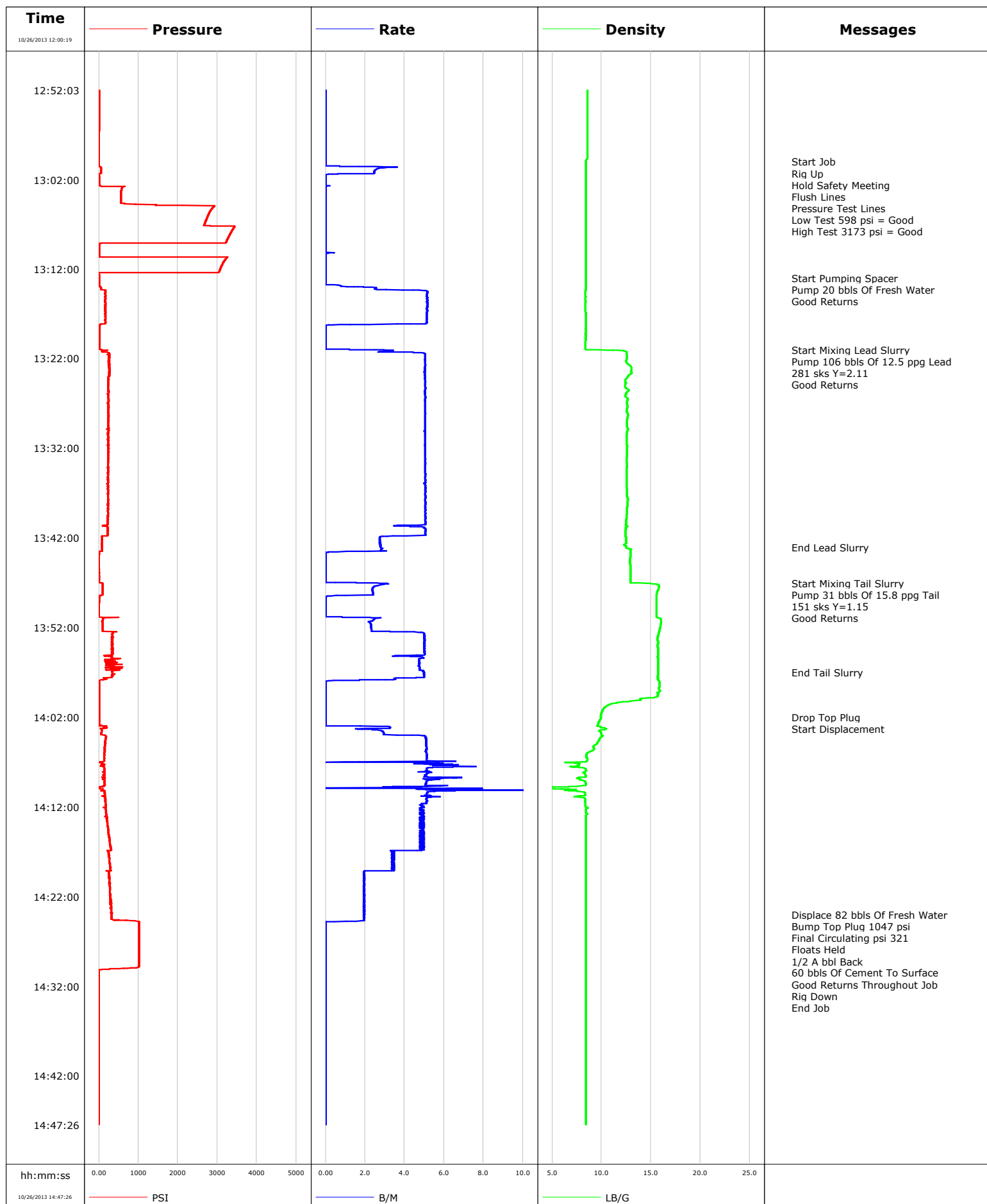


Well Rose 22-6DD
Field Parachute
Engineer Justin Zika/Joe Fanning
Country United States

Client Encana
SIR No.
Job Type Surface
Job Date 10-26-2013

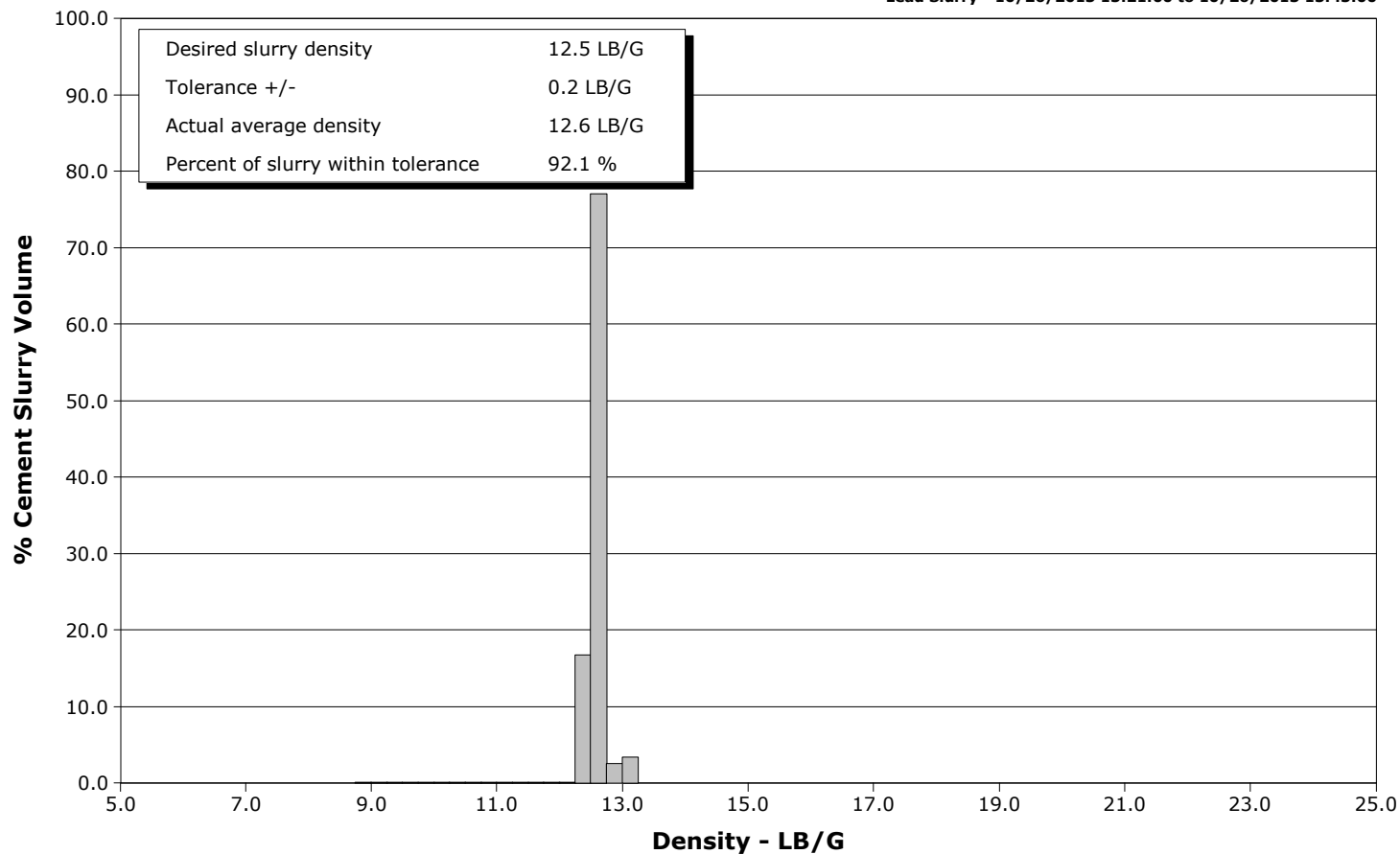


Schlumberger Cementing Qa/Qc Density Report

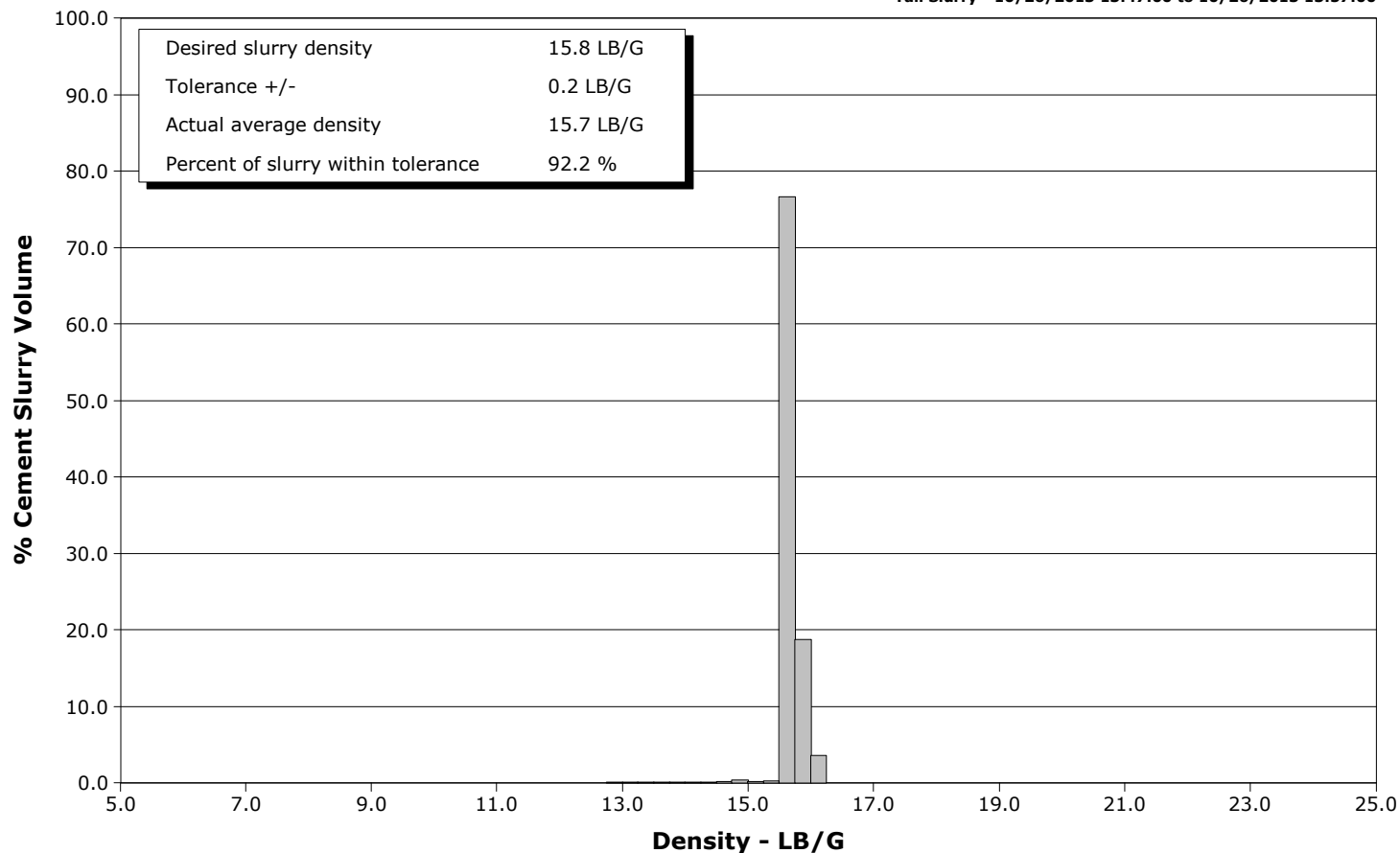
Well Rose 22-6DD
Field Parachute
Engineer Justin Zika/Joe Fanning
Country United States

Client Encana
SIR No.
Job Type Surface
Job Date 10-26-2013

Lead Slurry - 10/26/2013 13:21:00 to 10/26/2013 13:43:00



Tail Slurry - 10/26/2013 13:47:00 to 10/26/2013 13:57:00





Cementing Service Report

				Customer Encana		Job Number 1866130		
Well Rose 22-6DD 22-6DD			Location (legal) Grand Junction, CO		Schlumberger Location		Job Start Oct/26/2013	
Field Parachute		Formation Name/Type		Deviation	Bit Size	Well MD 1100.0 ft		Well TVD 1100.0 ft
County Garfield		State/Province Colorado		BHP	BHST 94 degF	BHCT 82 degF	Pore Press. Gradient	
Well Master 0631485484		API/UWI 05045221090000						
Rig Name Patterson 303	Drilled For Gas	Service Via Land	Casing/Liner					
			Depth, ft	Size, in	Weight, lb/ft	Grade	Thread	
Offshore Zone	Well Class New	Well Type Development	1100.0	9.630	36.0	J55	8RD	
			0.0	0.000	0.0			
Drilling Fluid Type		Max. Density	Plastic Viscosity	Tubing/Drill Pipe				
				Depth,	Size,	Weight,	Grade	Thread
Service Line Cementing	Job Type Surface							
Max. Allowed Tub. Press 544 psi	Max. Allowed Ann. Press	WH Connection Single Cement head	Perforations/Open Hole					
			Top,	Bottom,		No. of Shots	Total Interval	
Service Instructions Rig Up Hold Safety Meeting Flush Lines Pressure Test Lines Pump 20 bbls Of Fresh Water Pump 106 bbls Of 12.5 ppg Lead Pump 31 bbls Of 15.8 ppg Tail Shut Down Drop Plug Displace							Diameter	
			Treat Down Casing	Displacement 82.0 bbl	Packer Type	Packer Depth		
			Tubing Vol.	Casing Vol. 85.0 bbl	Annular Vol. 77.0 bbl	Openhole Vol. 168.0 bbl		
Casing/Tubing Secured <input checked="" type="checkbox"/>	1 Hole Vol. Circulated prior to Cement <input checked="" type="checkbox"/>	Casing Tools				Squeeze Job		
Lift Pressure 544 psi			Shoe Type Float			Squeeze Type		
Pipe Rotated <input type="checkbox"/>	Pipe Reciprocated <input type="checkbox"/>	Shoe Depth 1100.0 ft			Tool Type			
No. Centralizers		Top Plugs 1	Bottom Plugs	Stage Tool Type		Tool Depth		
Cement Head Type Single			Stage Tool Depth		Tail Pipe Size			
Job Scheduled For Oct/26/2013 11:00		Arrived on Location Oct/26/2013 11:00	Leave Location Oct/26/2013 16:00	Collar Type Float		Tail Pipe Depth		
				Collar Depth 1054.0 ft		Sqz. Total Vol.		
Date	Time 24-hr clock	Treating Pressure PSI	Flow Rate B/M	Density LB/G	Volume BBL	Message		
10/26/2013	12:00:16					Started Acquisition		
10/26/2013	12:00:19	1	0.0	0.01	0.0			
10/26/2013	12:01:56	-1	0.0	0.01	0.0			
10/26/2013	12:03:36	0	0.0	0.01	0.0			
10/26/2013	12:05:16	0	0.0	0.01	0.0			
10/26/2013	12:06:56	-1	0.0	0.01	0.0			
10/26/2013	12:08:36	-1	0.0	0.01	0.0			
10/26/2013	12:10:16	-1	0.0	0.01	0.0			
10/26/2013	12:11:56	-2	0.0	0.01	0.0			
10/26/2013	12:13:36	-2	0.0	0.01	0.0			
10/26/2013	12:15:16	-1	0.0	0.01	0.0			
10/26/2013	12:16:56	-2	0.0	0.01	0.0			
10/26/2013	12:18:36	-1	0.0	0.01	0.0			
10/26/2013	12:20:16	-1	0.0	0.01	0.0			
10/26/2013	12:21:56	-2	0.0	0.01	0.0			
10/26/2013	12:23:36	-1	0.0	0.01	0.0			
10/26/2013	12:25:16	-2	0.0	0.01	0.0			
10/26/2013	12:26:56	13	1.6	8.05	0.9			
10/26/2013	12:28:36	88	4.1	8.31	5.3			
10/26/2013	12:30:16	52	2.0	8.40	11.5			
10/26/2013	12:31:56	1	0.0	8.41	13.9			

Well			Field		Job Start	Customer	Job Number
Rose 22-6DD 22-6DD			Parachute		Oct/26/2013	Encana	1866130
Date	Time 24-hr clock	Treating Pressure PSI	Flow Rate B/M	Density LB/G	Volume BBL	Message	
10/26/2013	12:35:16	1	0.0	8.41	13.9		
10/26/2013	12:36:56	1	0.0	8.43	13.9		
10/26/2013	12:38:36	1	0.0	8.44	13.9		
10/26/2013	12:40:16	1	0.0	8.45	13.9		
10/26/2013	12:41:56	1	0.0	8.47	13.9		
10/26/2013	12:43:36	1	0.0	8.49	13.9		
10/26/2013	12:45:16	1	0.0	8.50	13.9		
10/26/2013	12:46:56	1	0.0	8.51	13.9		
10/26/2013	12:48:36	1	0.0	8.51	13.9		
10/26/2013	12:50:16	1	0.0	8.52	13.9		
10/26/2013	12:51:56	1	0.0	8.53	13.9		
10/26/2013	12:53:36	1	0.0	8.53	13.9		
10/26/2013	12:55:16	1	0.0	8.54	13.9		
10/26/2013	12:56:56	-2	0.0	8.55	13.9		
10/26/2013	12:58:36	-3	0.0	8.55	13.9		
10/26/2013	13:00:00					Start Job	
10/26/2013	13:00:00					Rig Up	
10/26/2013	13:00:00					Hold Safety Meeting	
10/26/2013	13:00:00					Flush Lines	
10/26/2013	13:00:00	-3	0.0	8.41	13.9		
10/26/2013	13:00:16	-3	0.0	8.41	13.9		
10/26/2013	13:01:56	11	0.0	8.39	16.2		
10/26/2013	13:02:00					Pressure Test Lines	
10/26/2013	13:02:00					Low Test 598 psi = Good	
10/26/2013	13:02:00					High Test 3173 psi = Good	
10/26/2013	13:02:00	11	0.0	8.39	16.2		
10/26/2013	13:03:36	559	0.0	8.39	16.2		
10/26/2013	13:05:16	2862	0.0	8.39	16.2		
10/26/2013	13:06:56	2678	0.0	8.39	16.2		
10/26/2013	13:08:36	3263	0.0	8.39	16.2		
10/26/2013	13:10:16	2	0.0	8.39	16.2		
10/26/2013	13:11:56	3076	0.0	8.39	16.2		
10/26/2013	13:13:00					Start Pumping Spacer	
10/26/2013	13:13:00					Pump 20 bbls Of Fresh Water	
10/26/2013	13:13:00					Good Returns	
10/26/2013	13:13:00	12	0.0	8.39	16.2		
10/26/2013	13:13:36	8	0.0	8.39	16.2		
10/26/2013	13:15:16	163	5.1	8.36	22.0		
10/26/2013	13:16:56	159	5.1	8.38	30.6		
10/26/2013	13:18:36	18	0.0	8.38	36.9		
10/26/2013	13:20:16	17	0.0	8.38	36.9		
10/26/2013	13:21:00					Start Mixing Lead Slurry	
10/26/2013	13:21:00					Pump 106 bbls Of 12.5 ppg Lead	
10/26/2013	13:21:00					281 sks Y=2.11	
10/26/2013	13:21:00					Good Returns	
10/26/2013	13:21:00	75	2.5	8.91	37.0		
10/26/2013	13:21:56	259	5.0	12.56	41.1		
10/26/2013	13:23:36	252	5.0	13.06	49.5		
10/26/2013	13:25:16	227	5.1	12.45	57.9		
10/26/2013	13:26:56	212	5.0	12.55	66.3		
10/26/2013	13:28:36	235	5.0	12.60	74.7		
10/26/2013	13:30:16	253	5.0	12.55	83.1		
10/26/2013	13:31:56	233	5.0	12.57	91.5		
10/26/2013	13:33:36	237	5.1	12.54	99.9		

Well			Field		Job Start	Customer	Job Number
Rose 22-6DD 22-6DD			Parachute		Oct/26/2013	Encana	1866130
Date	Time 24-hr clock	Treating Pressure PSI	Flow Rate B/M	Density LB/G	Volume BBL	Message	
10/26/2013	13:36:56	229	5.1	12.57	116.7		
10/26/2013	13:38:36	230	5.0	12.59	125.2		
10/26/2013	13:40:16	213	5.1	12.47	133.6		
10/26/2013	13:41:56	76	2.7	12.45	141.4		
10/26/2013	13:43:00					End Lead Slurry	
10/26/2013	13:43:00	76	2.8	12.47	144.3		
10/26/2013	13:43:36	-4	0.1	12.90	145.8		
10/26/2013	13:45:16	-1	0.0	12.90	145.8		
10/26/2013	13:46:56	0	0.0	12.90	145.8		
10/26/2013	13:47:00					Start Mixing Tail Slurry	
10/26/2013	13:47:00					Pump 31 bbls Of 15.8 ppg Tail	
10/26/2013	13:47:00					151 sks Y=1.15	
10/26/2013	13:47:00					Good Returns	
10/26/2013	13:47:00	58	1.6	12.94	145.8		
10/26/2013	13:48:36	15	0.0	15.56	149.3		
10/26/2013	13:50:16	-3	0.0	15.57	149.3		
10/26/2013	13:51:56	94	2.3	15.94	151.9		
10/26/2013	13:53:36	322	5.0	15.71	158.8		
10/26/2013	13:55:16	332	4.9	15.66	167.0		
10/26/2013	13:56:56	337	5.0	15.72	175.0		
10/26/2013	13:57:00					End Tail Slurry	
10/26/2013	13:57:00	340	5.0	15.72	175.3		
10/26/2013	13:58:36	1	0.0	15.84	179.2		
10/26/2013	14:00:16	1	0.0	12.29	179.2		
10/26/2013	14:01:56	1	0.0	9.90	179.2		
10/26/2013	14:02:00					Drop Top Plug	
10/26/2013	14:02:00					Start Displacement	
10/26/2013	14:02:00	1	0.0	9.94	179.2		
10/26/2013	14:03:36	66	2.9	9.88	180.9		
10/26/2013	14:05:16	142	5.1	9.13	188.6		
10/26/2013	14:06:56	134	5.6	8.44	197.1		
10/26/2013	14:08:36	138	5.1	8.39	205.9		
10/26/2013	14:10:16	134	5.5	7.58	214.4		
10/26/2013	14:11:56	175	4.9	8.38	222.9		
10/26/2013	14:13:36	215	4.9	8.39	231.1		
10/26/2013	14:15:16	254	5.0	8.39	239.2		
10/26/2013	14:16:56	264	3.5	8.39	247.3		
10/26/2013	14:18:36	288	3.4	8.39	253.0		
10/26/2013	14:20:16	260	1.9	8.39	257.0		
10/26/2013	14:21:56	284	1.9	8.39	260.3		
10/26/2013	14:23:36	310	2.0	8.39	263.5		
10/26/2013	14:24:00					Displace 82 bbls Of Fresh Water	
10/26/2013	14:24:00					Bump Top Plug 1047 psi	
10/26/2013	14:24:00					Final Circulating psi 321	
10/26/2013	14:24:00					Floats Held	
10/26/2013	14:24:00					1/2 A bbl Back	
10/26/2013	14:24:00					60 bbls Of Cement To Surface	
10/26/2013	14:24:00					Good Returns Throughout Job	
10/26/2013	14:24:00					Rig Down	
10/26/2013	14:24:00					End Job	
10/26/2013	14:24:00	322	2.0	8.39	264.3		
10/26/2013	14:25:16	1014	0.0	8.39	265.8		
10/26/2013	14:26:56	1012	0.0	8.39	265.8		
10/26/2013	14:28:36	1013	0.0	8.39	265.8		

Well			Field		Job Start	Customer	Job Number
Rose 22-6DD 22-6DD			Parachute		Oct/26/2013	Encana	1866130
Date	Time 24-hr clock	Treating Pressure PSI	Flow Rate B/M	Density LB/G	Volume BBL	Message	
10/26/2013	14:31:56	-5	0.0	8.39	265.8		
10/26/2013	14:33:36	-9	0.0	8.39	265.8		
10/26/2013	14:35:16	-8	0.0	8.39	265.8		
10/26/2013	14:36:56	-8	0.0	8.39	265.8		
10/26/2013	14:38:36	-8	0.0	8.39	265.8		
10/26/2013	14:40:16	-8	0.0	8.39	265.8		
10/26/2013	14:41:56	-8	0.0	8.39	265.8		
10/26/2013	14:43:36	-8	0.0	8.39	265.8		
10/26/2013	14:45:16	-8	0.0	8.39	265.8		

Post Job Summary

Average Pump Rates,					Volume of Fluid Injected, bbl			
Slurry	N2	Mud	Maximum Rate		Total Slurry 137.0	Mud	Spacer 20.0	N2
Treating Pressure Summary, psi					Breakdown Fluid			
Maximum 3000	Final 321	Average	Bump Plug to 1047	Breakdown	Type	Volume		Density
Avg. N2 Percent		Designed Slurry Volume 137.0 bbl		Displacement 82.0 bbl	Mix Water Temp 57 degF	Cement Circulated to Surface? <input checked="" type="checkbox"/>		Volume 60.0 bbl
						Washed Thru Perfs <input type="checkbox"/>		To
Customer or Authorized Representative			Schlumberger Supervisor			Circulation Lost <input type="checkbox"/>		Job Completed <input checked="" type="checkbox"/>
Charlie Brown			Justin Zika			-		-