

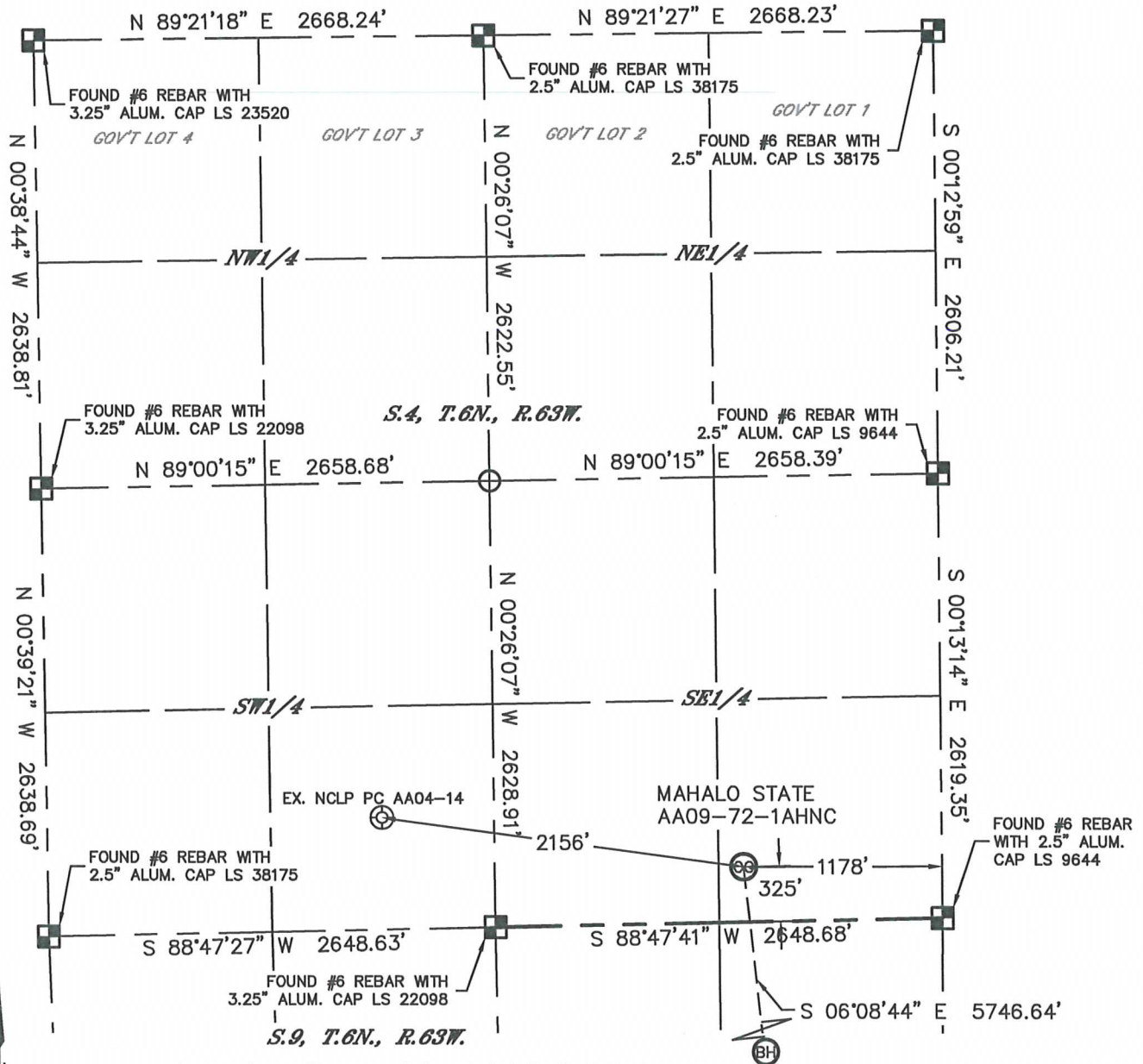


Lat40°, Inc. 1635 Foxtrail Drive, Suite 325 Loveland, CO 970-776-3321

# WELL LOCATION CERTIFICATE

THIS MAP DOES NOT REPRESENT A BOUNDARY SURVEY

SECTION: 4  
TOWNSHIP: 6N  
RANGE: 63W



In accordance with a request from Cody Ball with Noble Energy Inc. Lat40°, Inc. has determined the surface location of the MAHALO STATE AA09-72-1AHNC to be 325' from the SOUTH line and 1178' from the EAST line as measured at right angles from the section lines of Section 4, Township 6 North, Range 63 West and the bottom hole to be 30' from the NORTH line and 535' from the EAST line as measured at right angles from the section lines of Section 16, Township 6 North, Range 63 West of the Sixth Principal Meridian, County of Weld, State of Colorado.

I hereby state that this Well Location Certificate was prepared by me, or under my direct supervision, that the fieldwork was completed on 8/9/2013, for and on behalf of Noble Energy Inc. That this is not a Land Survey Plat or an Improvement Survey Plat, and that it is not to be relied upon for establishment of fence, building, or other future improvement lines.

## NOTE:

- 1) Bearings shown are Grid Bearings of the Colorado State Plane Coordinate System, North Zone, North American Datum 1983/2007. The lineal dimensions as contained herein are based upon the "U.S. Survey Foot."
  - 2) Ground elevations are based on an observed GPS elevation (NAVD 1988 DATUM).
  - 3) IMPROVEMENTS: See LOCATION DRAWING for all visible improvements within 500' of disturbed area.
  - 4) SURFACE USE: RANGELAND
  - 5) INSTRUMENT OPERATOR: BRIAN ROTTINGHAUS
  - 6) NEAREST EXISTING WELL: NCLP PC AA04-14, 2156'
- NEAREST CULTURAL ITEMS:  
BUILDING: ±2449' SE  
BUILDING UNIT: ±2449' SE  
HIGH OCCUPANCY BUILDING UNIT: 5280'+  
DESIGNATED OUTSIDE ACTIVITY AREA: 5280'+  
PUBLIC ROAD: 792' SE  
ABOVE GROUND UTILITY: 733' SE  
RAILROAD: 5280'+  
PROPERTY LINE: 325' S

## SURFACE LOCATION

LAT: 40.50952N  
LONG: 104.43640W  
PDOP: 1.8  
ELEV: 4700'  
1/4,1/4: SE1/4SE1/4

## BOTTOM HOLE

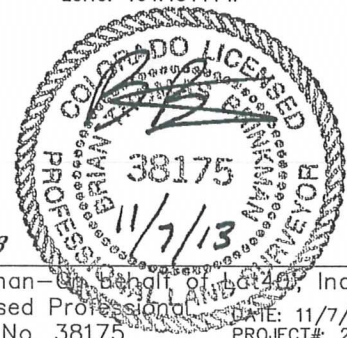
LAT: 40.49382N  
LONG: 104.43444W

## LEGEND

- = ALIQUOT MONUMENT AS DESCRIBED  
○ = CALCULATED POSITION

## SHEET 1 OF 3

Brian T. Brinkman—on behalf of Lat40°, Inc.  
Colorado Licensed Professional Land Surveyor No. 38175  
DATE: 11/7/2013  
PROJECT#: 2013042



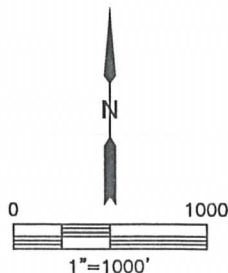
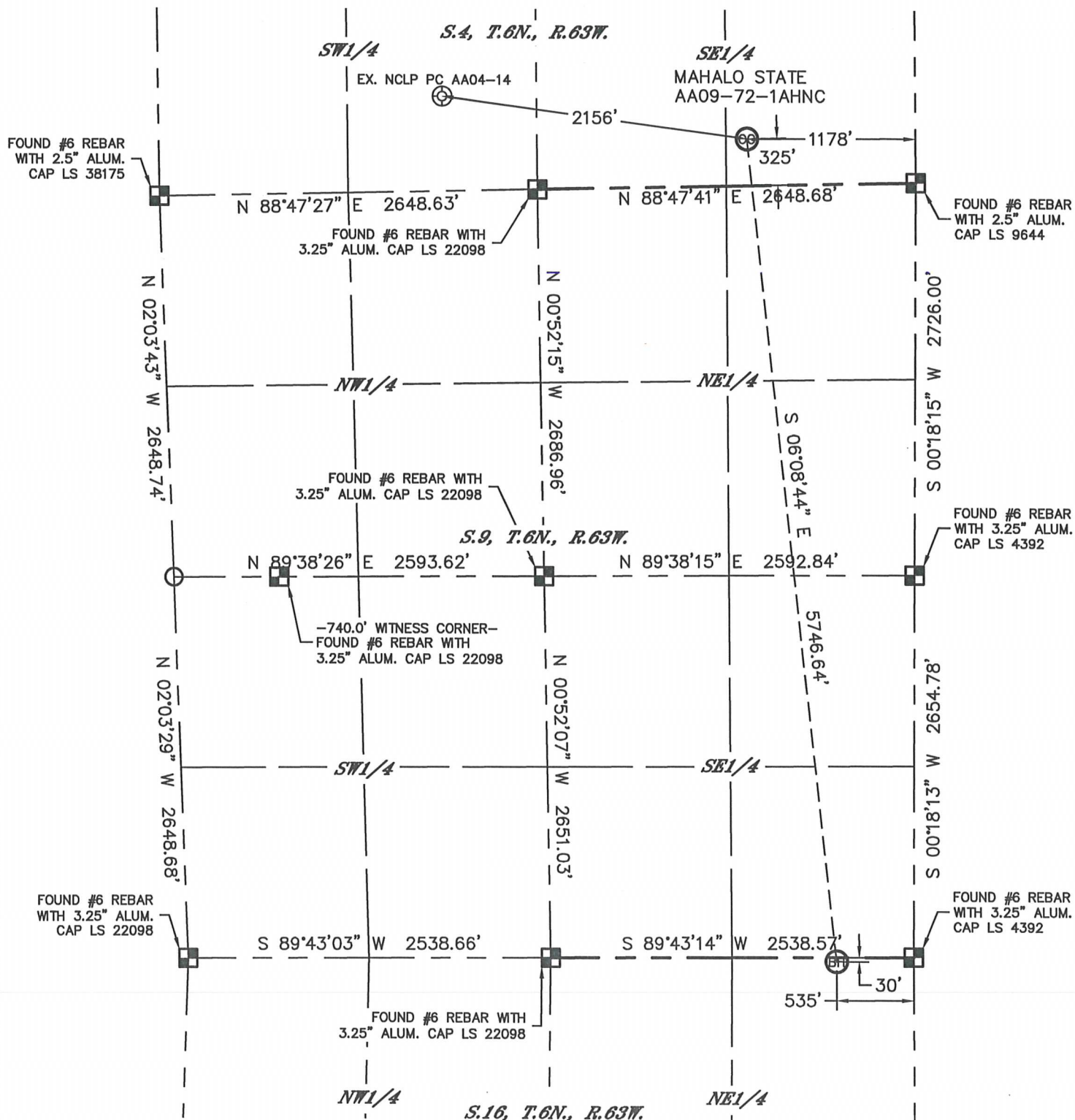


Lat40°, Inc. 1635 Foxtrail Drive, Suite 325 Loveland, CO 970-776-3321

# WELL LOCATION CERTIFICATE

THIS MAP DOES NOT REPRESENT A BOUNDARY SURVEY

SECTION: 4  
TOWNSHIP: 6N  
RANGE: 63W



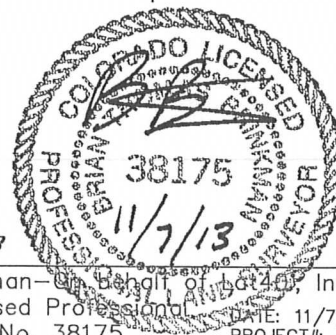
## LEGEND

- = ALIQUOT MONUMENT AS DESCRIBED
- = CALCULATED POSITION

SHEET 2 OF 3

Brian T. Brinkman—  
Colorado Licensed Professional  
Land Surveyor No. 38175

DATE: 11/7/2013  
PROJECT#: 2013042





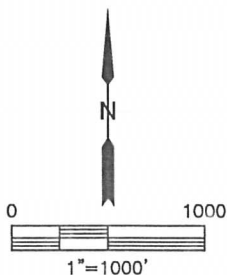
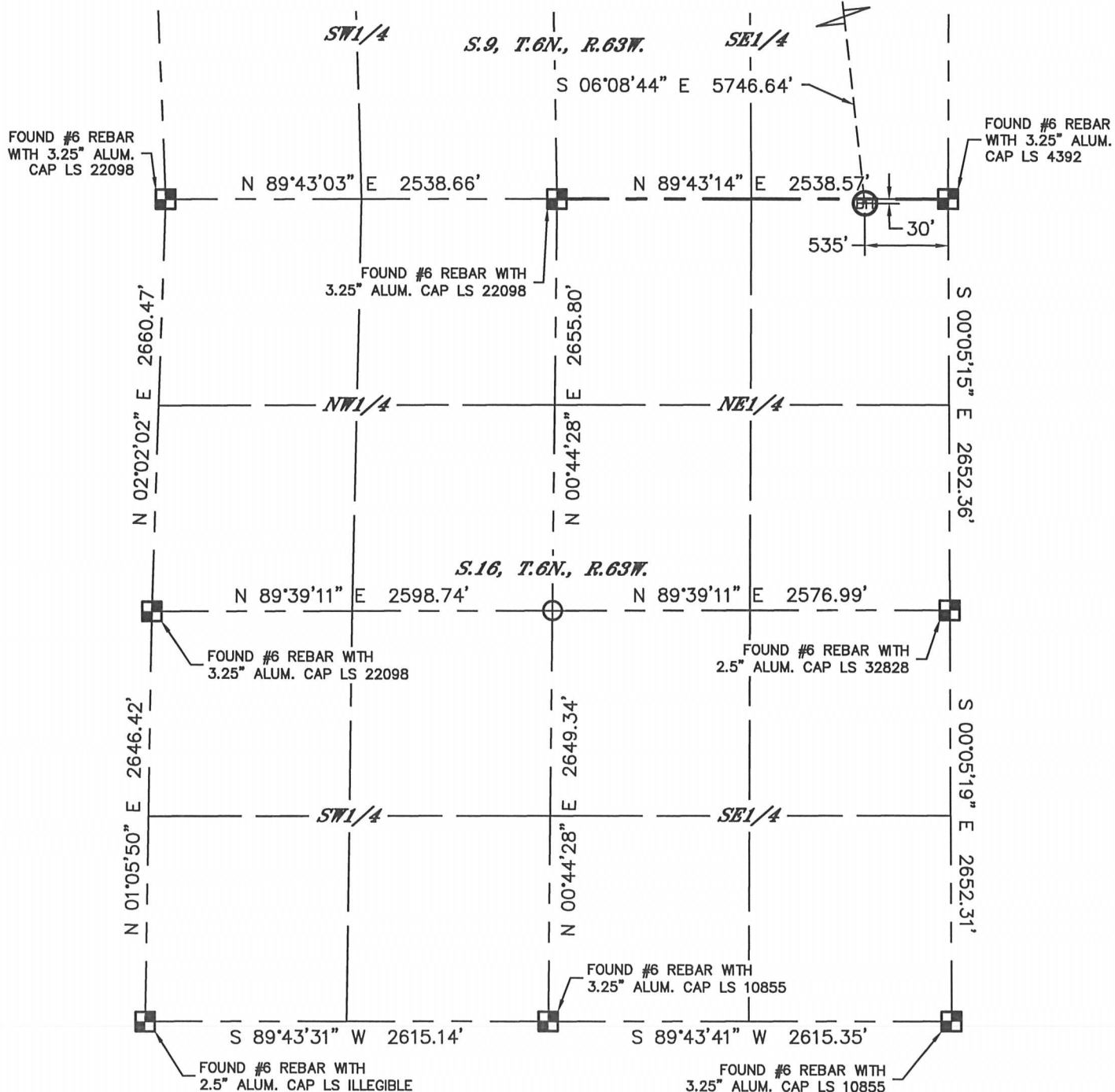
Lat40°, Inc. 1635 Foxtrail Drive, Suite 325 Loveland, CO 970-776-3321

# WELL LOCATION CERTIFICATE

THIS MAP DOES NOT REPRESENT A BOUNDARY SURVEY

SECTION: 4  
TOWNSHIP: 6N  
RANGE: 63W

MAHALO STATE AA09-72-1AHNC



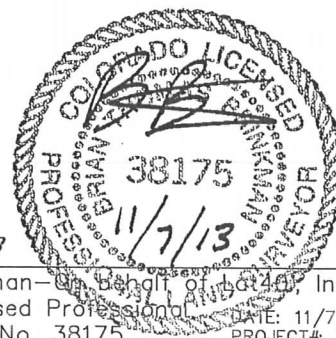
## LEGEND

- = ALIQUOT MONUMENT AS DESCRIBED
- = CALCULATED POSITION

SHEET 3 OF 3

Brian T. Brinkman—on behalf of Lat40°, Inc.  
Colorado Licensed Professional Land Surveyor No. 38175

DATE: 11/7/2013  
PROJECT#: 2013042



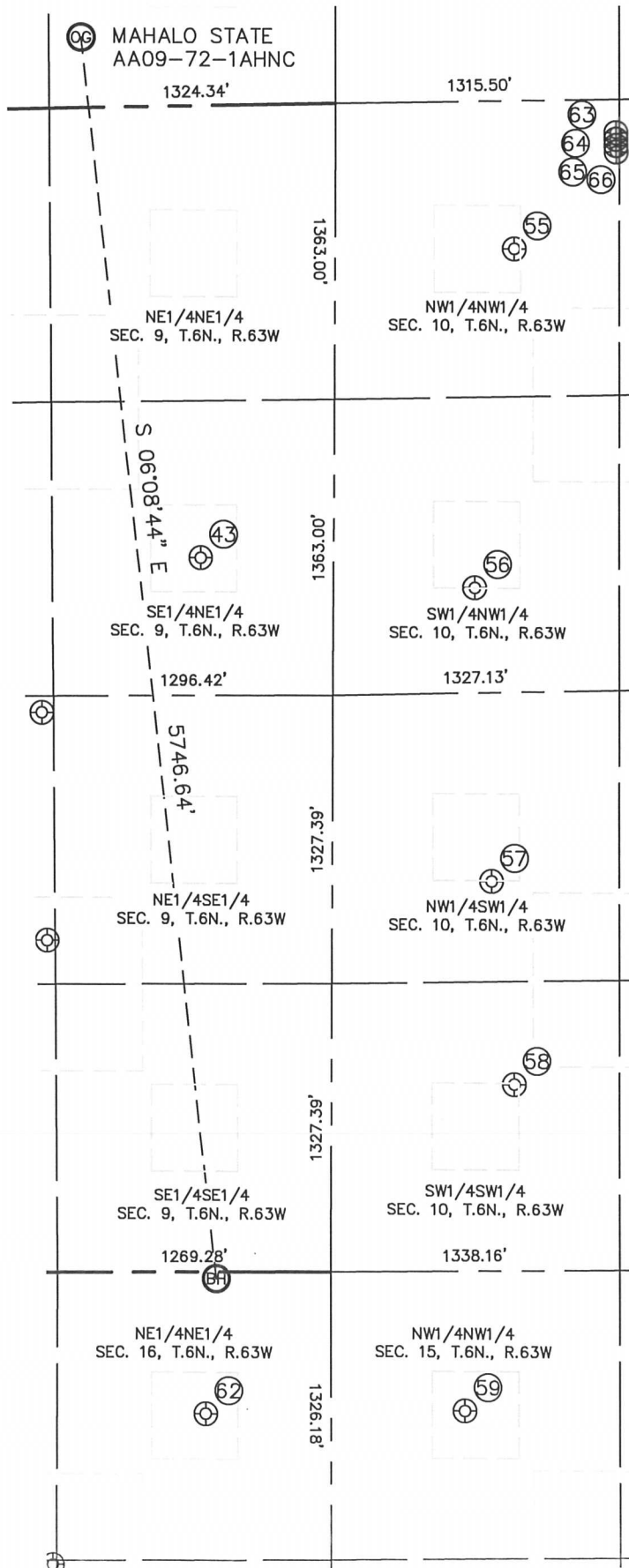


Lat40°, Inc. 1635 Foxtrail Drive, Suite 325 Loveland, CO 970-776-3321

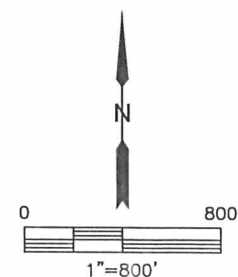
# SITE SKETCH

MAHALO STATE AA09-72-1AHNC

SECTION: 4  
TOWNSHIP: 6N  
RANGE: 63W



WELL #	WELL NAME	SHL FOOTAGE			SHL LAT °	SHL LONG °	PDOP	ELEV (FT.)	1/4/1/4
43	BASHOR PCAA 9-8	2080	FNL	620	FEL	-104.43454	1.9	4694	SENE
55	CORNISH 11-10	683	FNL	831	FWL	-104.42923	2.1	4696	NWNW
56	CORNISH 12-10	2239	FNL	654	FWL	-104.42997	3.1	4690	SWNW
57	WALKER 13-10	1792	FSL	738	FWL	-104.42975	2.2	4695	NWSW
58	WALKER 14-10	857	FSL	847	FWL	-104.42942	2.2	4696	SWSW
59	WELLS RANCH USX AA 15-4	644	FNL	621	FWL	-104.43031	2.1	4699	NWNW
62	BASHOR STATE AA 16-1	653	FNL	584	FEL	-104.43464	1.9	4688	NENE
63	SCHAEFER 10E-223	155	FNL	1300	FWL	-104.42751	2.1	4698	NWNW
64	SCHAEFER 10M-243	184	FNL	1300	FWL	-104.42752	2.2	4698	NWNW
65	SCHAEFER 10J-403	214	FNL	1301	FWL	-104.42752	2.2	4698	NWNW
66	SCHAEFER 10J-203	243	FNL	1301	FWL	-104.42751	2.2	4698	NWNW



DATE: 11/7/2013  
PROJECT#: 2013042