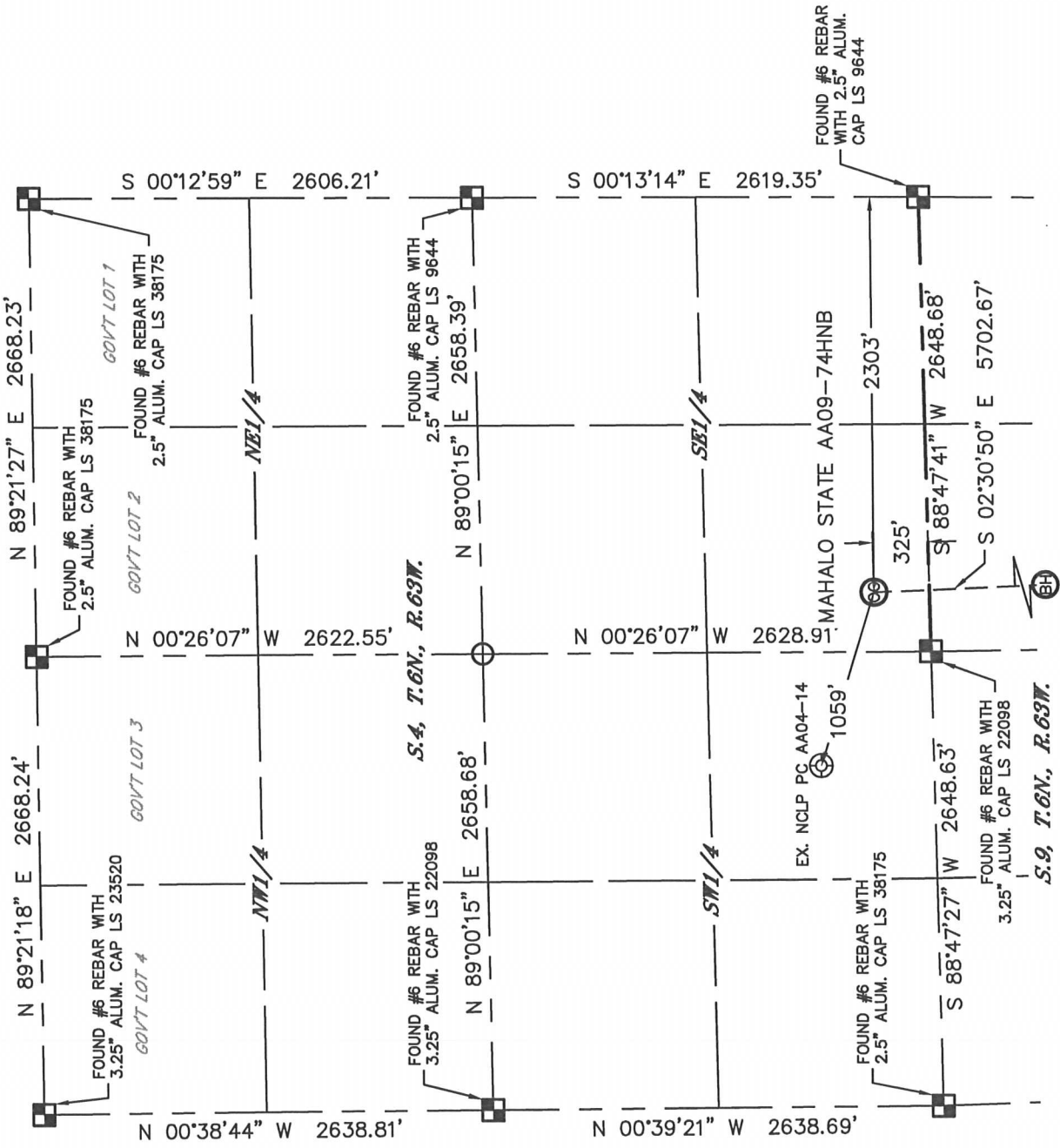




SECTION: 4
TOWNSHIP: 6N
RANGE: 63W

N 89°21'18" E 2668.24' FOUND #6 REBAR WITH 3.25" ALUM. CAP LS 23520 GOV'T LOT 4
 N 89°21'27" E 2668.23' FOUND #6 REBAR WITH 2.5" ALUM. CAP LS 38175 GOV'T LOT 2
 GOV'T LOT 3
 GOV'T LOT 1
 FOUND #6 REBAR WITH 2.5" ALUM. CAP LS 38175
 N 00°00'00" E 0'0"0"



In accordance with a request from ~~Section 4~~ MAHALO STATE, Lat40°, Inc. has determined the surface location of the MAHALO STATE AA08-74HNB to be 325' from the SOUTH line and 2303' from the EAST line as measured at right angles from the section lines of Section 4, Township 6 North, Range 63 West and the bottom hole to be 30' from the NORTH line and 2025' from the EAST line as measured at right angles from the section lines of Section 16, Township 6 North, Range 63 West of the Sixth Principal Meridian, County of Weld, State of Colorado.

I hereby state that this Well Location Certificate was prepared by me, or under my direct supervision, that the fieldwork was completed on 8/9/2013, for and on behalf of Noble Energy Inc. That this is not a Land Survey Plat or an Improvement Survey Plat, and that it is not to be relied upon for establishment of fence, building, or other future improvement lines.

1) Bearings shown are Grid Bearings of the Colorado State Plane Coordinate System, North Zone, North American Datum 1983/2007. The lineal dimensions as contained herein are based upon the "U.S. Survey Foot."

2) Ground elevations are based on an observed GPS elevation (NAVD 1988 DATUM).

3) IMPROVEMENTS: See LOCATION DRAWING for all visible improvements within 500' of disturbed area.

SURFACE LOCATION
LAT: 40.50949N
LONG: 104.44045W
PDOP: 2.0
ELEV: 4694'
1/4,1/4; SW1/4SE1/4

SHEET 1 OF 3

 = ALIQUOT MONUMENT AS DESCRIBED

 = ALIQUOT MONUMENT A
 = CALCULATED POSITION

Brian T. Brinkman - City of Bengal, Bengal, Inc.
Colorado Licensed Professional Surveyor
DATE: 11/7/2013
PROJECT#: 2013042
Land Surveyor No. 38175

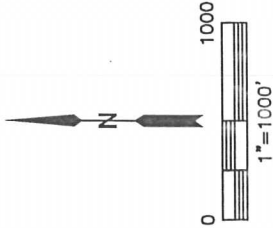
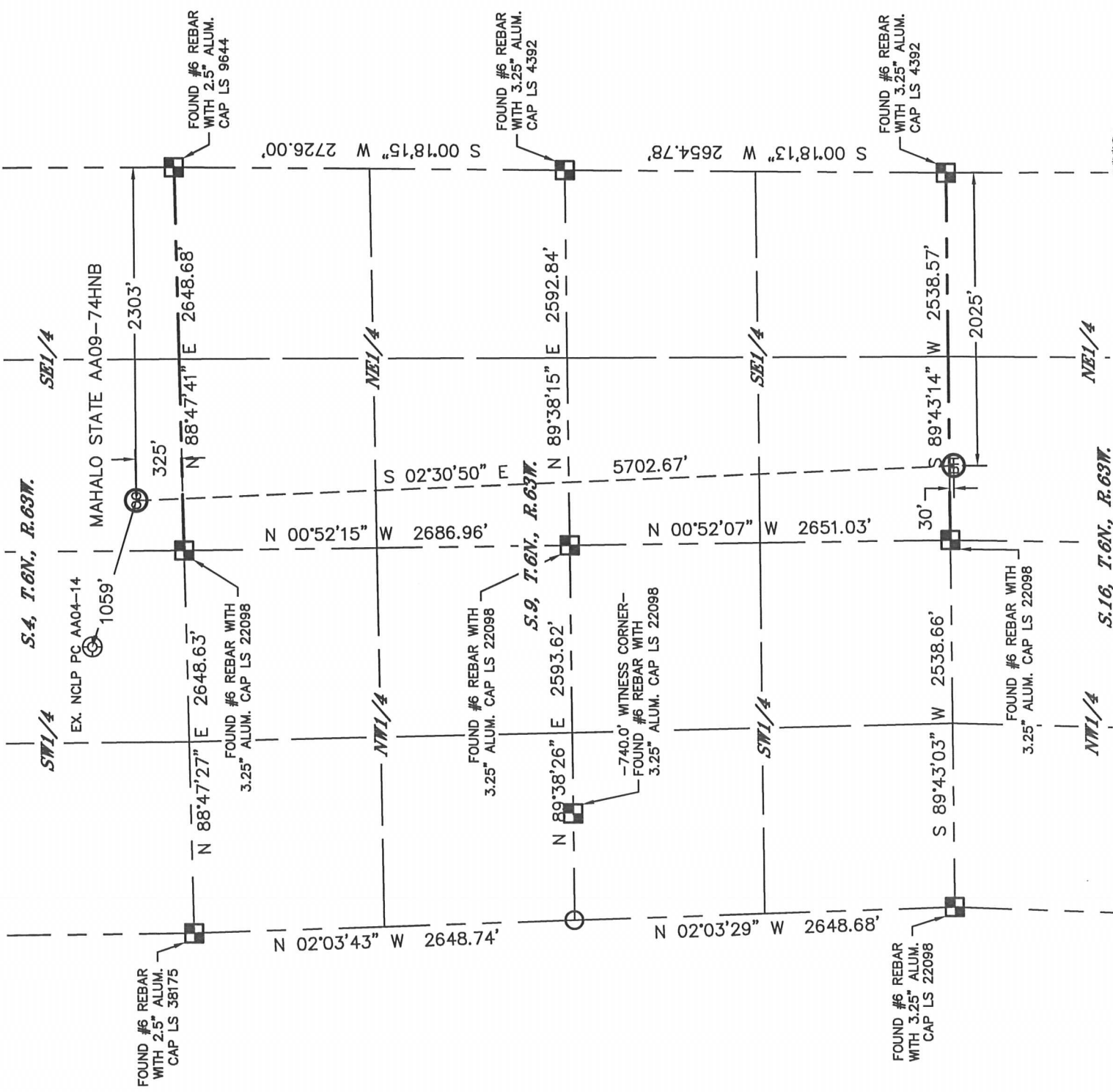


Lat40°, Inc. 1635 Foxtrail Drive, Suite 325 Loveland, CO 970-776-3321

WELL LOCATION CERTIFICATE

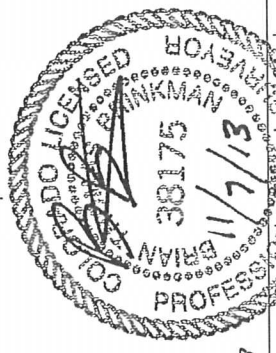
SECTION: 4
TOWNSHIP: 6N
RANGE: 63W

THIS MAP DOES NOT REPRESENT A BOUNDARY SURVEY



LEGEND

- = ALIQUOT MONUMENT AS DESCRIBED
- = CALCULATED POSITION



SHEET 2 OF 3

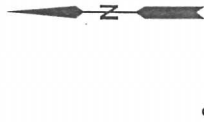
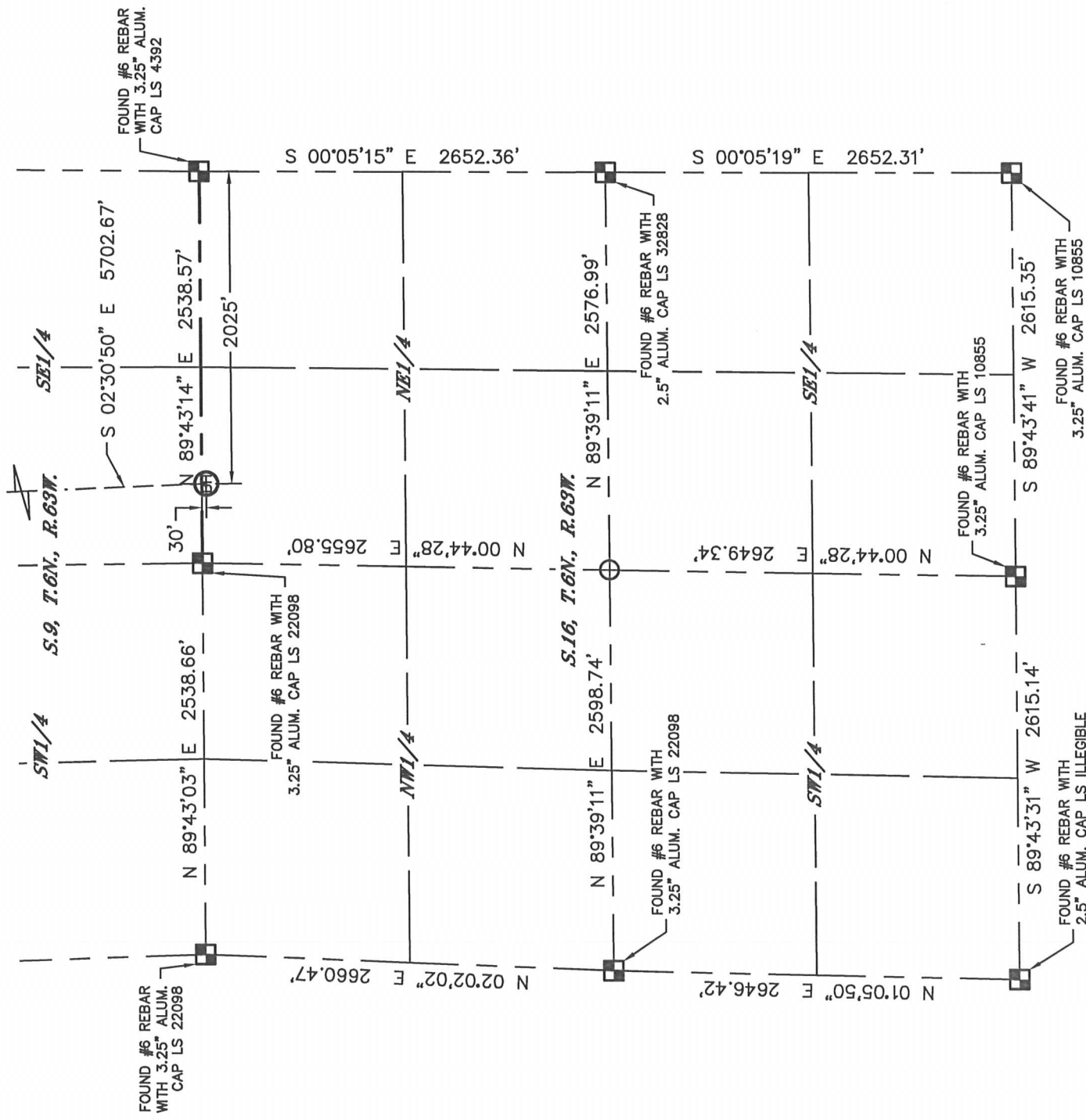
Brian T. Brinkman - Surveyor
Colorado Licensed Professional
Land Surveyor No. 38175
DATE: 11/7/2013
PROJECT#: 2013042



SECTION: 4
TOWNSHIP: 6N
RANGE: 63W

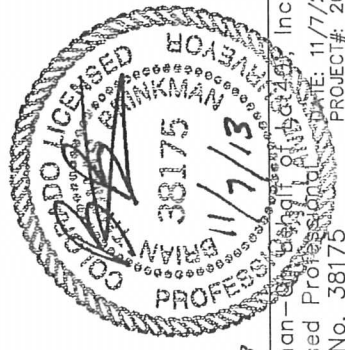
THIS MAP DOES NOT REPRESENT A BOUNDARY SURVEY

MAHALO STATE AA09-74HNB



SHEET 3 OF 3

 = ALIQUOT MONUMENT AS DESCRIBED
 = CALCULATED POSITION



Brian T. Brinkman - City of Boulder, Inc.
Colorado Licensed Professional Surveyor
Land Surveyor No. 38175
DATE: 11/7/2015
PROJECT#: 2015-001

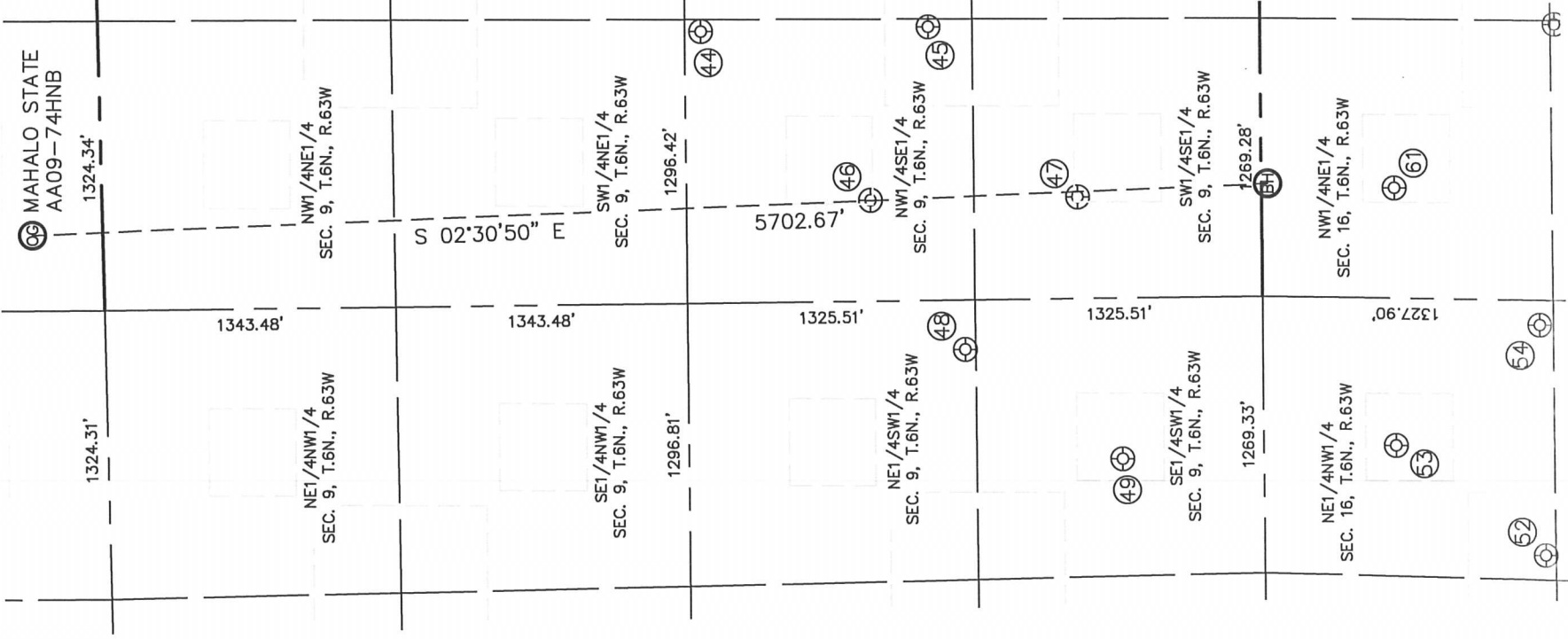


Lat40°, Inc. 1635 Foxtrail Drive, Suite 325 Loveland, CO 970-776-3321

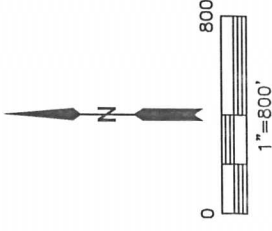
SITE SKETCH

SECTION: 4
TOWNSHIP: 6N
RANGE: 63W

MAHALO STATE AA09-74HNB



WELL #	WELL NAME	SHL FOOTAGE	SHL LAT°	SHL LONG°	PDOP	ELEV (FT.)	1/4/1/4
44	BASHOR PC AA 9-22	2578	FSL	1350	FEL	40.50099	-104.43721
45	BASHOR PC AA 9-23	1527	FSL	1321	FEL	40.49811	-104.43717
46	BASHOR 9-42	1801	FSL	2114	FEL	40.49887	-104.44000
47	BASHOR 9-43	847	FSL	2092	FEL	40.49625	-104.43998
48	BASHOR PC AA 9-24	1373	FSL	2338	FWL	40.49771	-104.44248
49	BASHOR PC AA 9-14	653	FSL	1813	FWL	40.49575	-104.44430
52	BASHOR STATE AA 16-19	1283	FNL	1395	FWL	40.49044	-104.44596
53	BASHOR STATE AA 16-3	603	FNL	1874	FWL	40.49230	-104.44413
54	BASHOR STATE 16-18	1265	FNL	2451	FWL	40.49047	-104.44216
61	BASHOR STATE AA 16-2	605	FNL	2045	FEL	40.49227	-104.43989
						1.8	4688
						1.9	4686
						1.8	4681
						1.8	4683
						1.7	4686
						2.1	4687
						1.7	4690
						1.7	4689
						1.4	4691
						1.5	4691



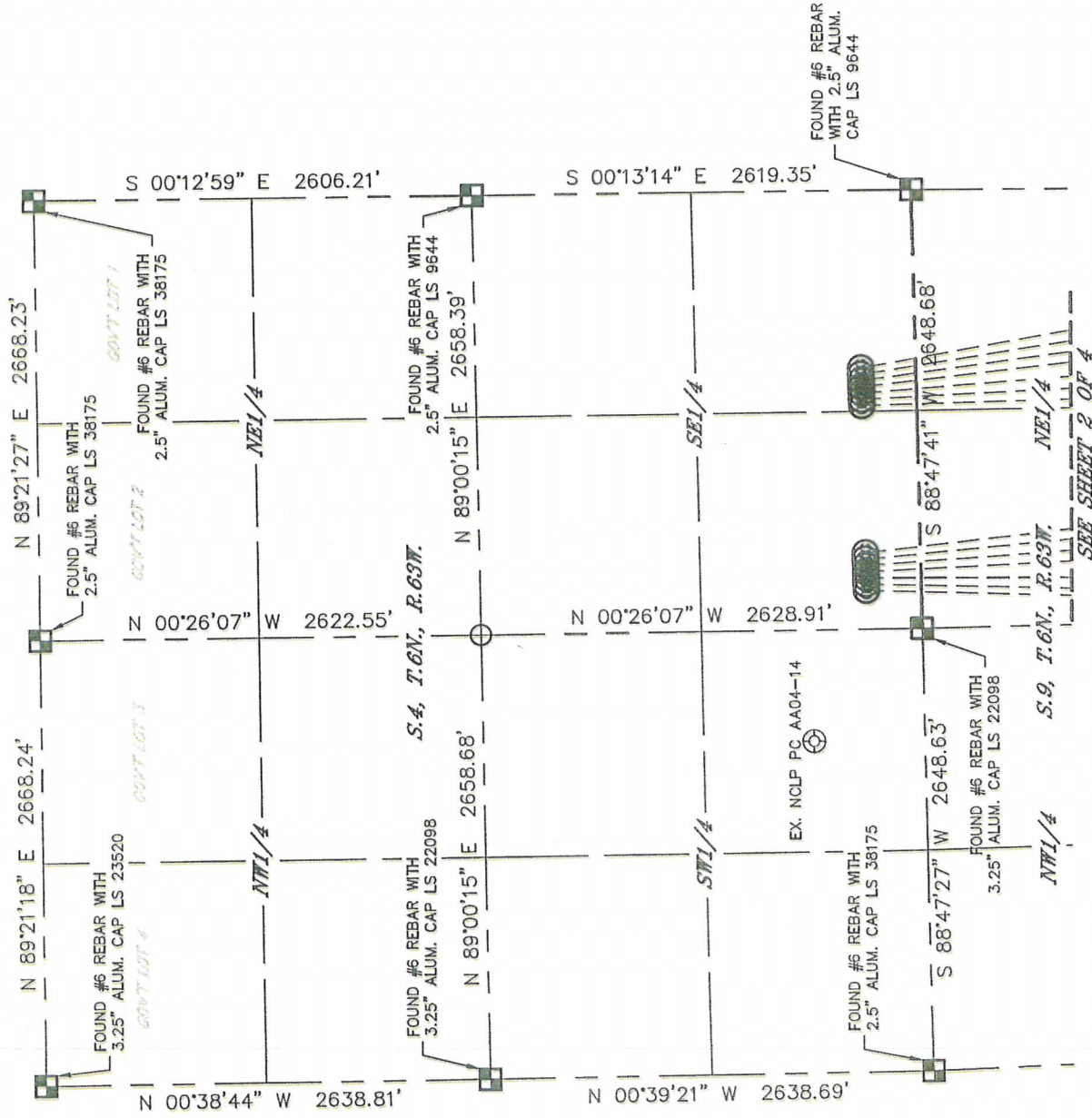


Lat40°, Inc. 1635 Foxtrail Drive, Suite 325 Loveland, CO 970-776-3321

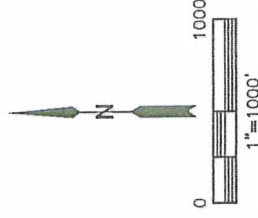
MULTI-WELL PLAN

MAHALO STATE AA09-75HNC PAD &
MAHALO STATE AA09-73-1AHNB PAD
THIS MAP DOES NOT REPRESENT A BOUNDARY SURVEY

SECTION: 4
TOWNSHIP: 6N
RANGE: 63W



	WELL NAME	BHL FOOTAGE		BHL LAT °	BHL LONG °
1	MAHALO STATE AA09-75HNC	30 FNL	2495 FWL	40.49386	-104.44179
2	MAHALO STATE AA09-75-1AHNB	30 FNL	2510 FEL	40.49386	-104.44154
3	MAHALO STATE AA09-75-1HNC	30 FNL	2345 FEL	40.49385	-104.44095
4	MAHALO STATE AA09-74HNC	30 FNL	2025 FEL	40.49385	-104.43979
5	MAHALO STATE AA09-74-1AHNC	30 FNL	1860 FEL	40.49384	-104.43920
6	MAHALO STATE AA09-74-1HNB	30 FNL	1675 FEL	40.49384	-104.43854
7	MAHALO STATE AA09-74-1BHNC	30 FNL	1510 FEL	40.49384	-104.43794
8	MAHALO STATE AA09-73-1AHNB	30 FNL	1155 FEL	40.49383	-104.43667
9	MAHALO STATE AA09-73-1HNC	30 FNL	990 FEL	40.49383	-104.43607
10	MAHALO STATE AA09-73-1BHNB	30 FNL	790 FEL	40.49382	-104.43536
11	MAHALO STATE AA09-72-1AHNC	30 FNL	535 FEL	40.49382	-104.43444
12	MAHALO STATE AA09-72-1HNB	30 FNL	380 FEL	40.49381	-104.43388
13	MAHALO STATE AA09-72-1BHNC	30 FNL	220 FEL	40.49381	-104.43331
14	MAHALO STATE AA10-79HNB	30 FNL	60 FEL	40.49381	-104.43273



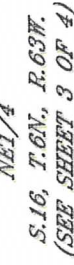
SHEET 1 OF 4

DATE: 11/25/2013
PROJECT#: 2013042



MULTI-WELL PLAN

THIS MAP DOES NOT REPRESENT A BOUNDARY SURVEY



SHEET 2 OF 4

DATE: 11/25/2013
PROJECT#: 2013042