

BONANZA CREEK ENERGY OPERATING

Well Name: **State North Platte F-J-26HNB**

Surface Location: State North Platte 11-14-26HC Pad Sec.26-T5N-R63W
North American Datum 1983 , US State Plane 1983 , Colorado Northern Zone

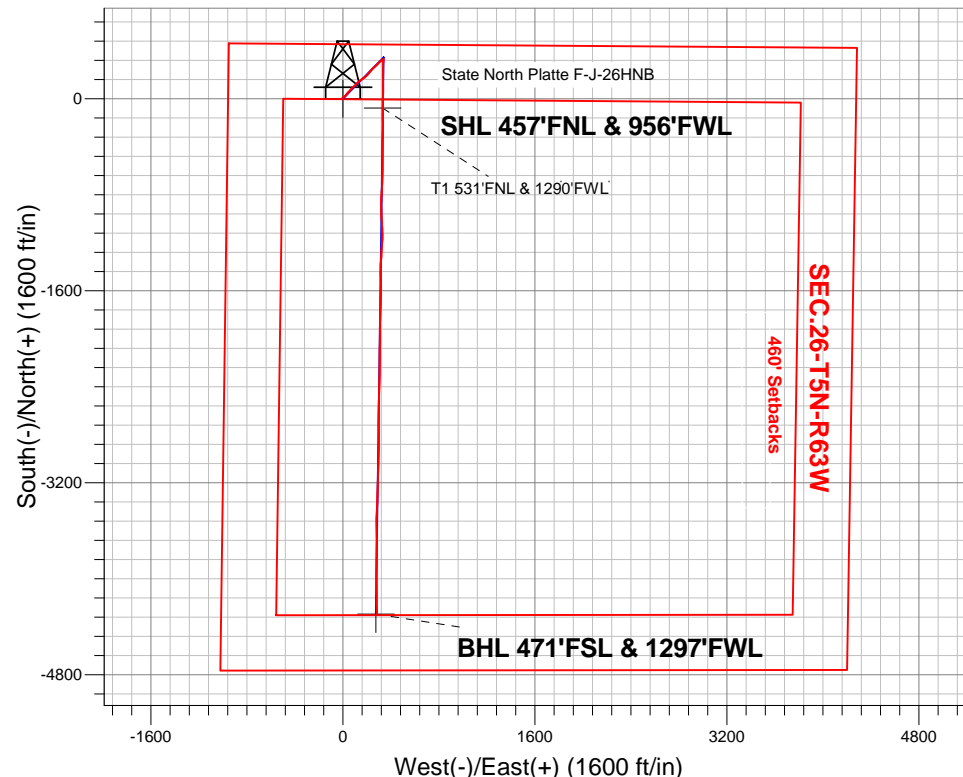
Ground Elevation: 4565.0

+N/-S	+E/-W	Northing	Easting	Latitude	Longitude	Slot
0.0	0.0	1381774.52	3303950.84	40.376240	-104.409010	

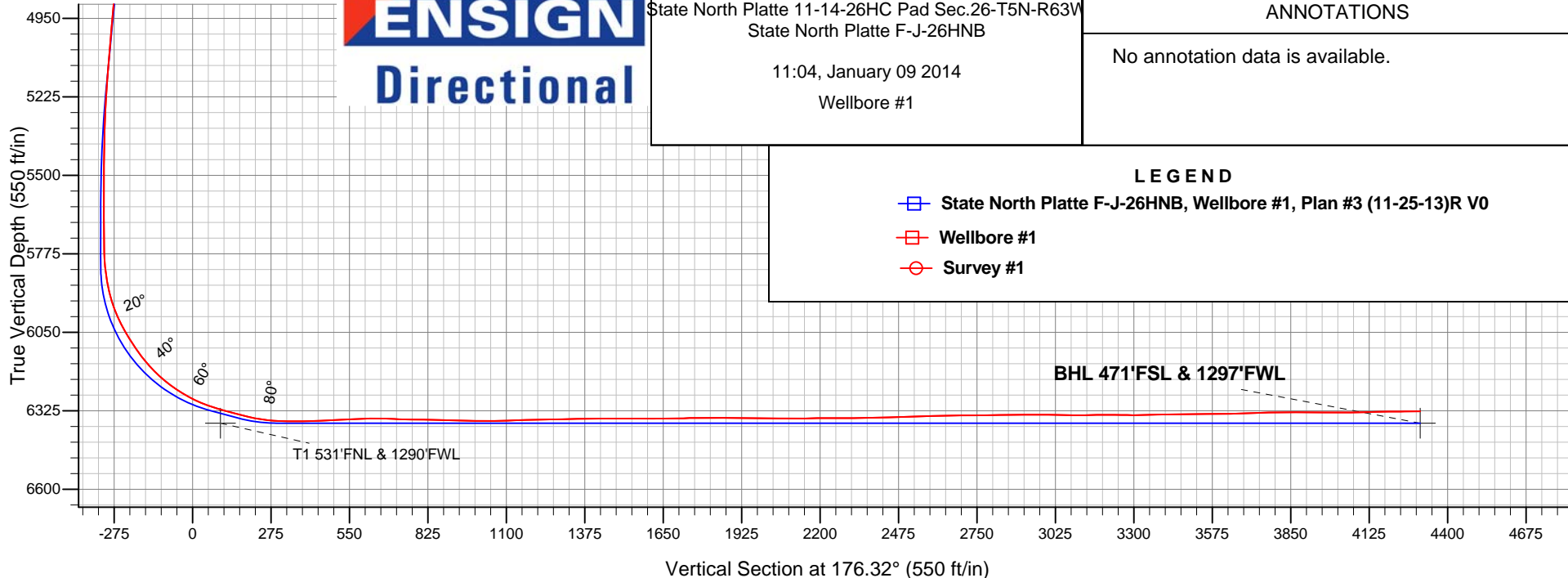
Ensign 136 RKB - 12' WELL @ 4577.0ft (Ensign 136 RKB - 12')

FINAL SURVEY

Projected Bottom Hole Location
10758'MD 6327'TVD 4294'S & 283'E of SHL
90.7 degree Incl @ 179.7 degree AZM



ENSIGN
Directional



State North Platte 11-14-26HC Pad Sec.26-T5N-R63W
State North Platte F-J-26HNB

11:04, January 09 2014

Wellbore #1

ANNOTATIONS

No annotation data is available.

LEGEND

- State North Platte F-J-26HNB, Wellbore #1, Plan #3 (11-25-13)R V0
- Wellbore #1
- Survey #1



BONANZA CREEK ENERGY OPERATING

SEC.26-T5N-R63W

State North Platte 11-14-26HC Pad Sec.26-T5N-R63W

State North Platte F-J-26HNB

Wellbore #1

Survey: Survey #1

Standard Survey Report

09 January, 2014

Company:	BONANZA CREEK ENERGY OPERATING	Local Co-ordinate Reference:	Well State North Platte F-J-26HNB
Project:	SEC.26-T5N-R63W	TVD Reference:	WELL @ 4577.0ft (Ensign 136 RKB - 12')
Site:	State North Platte 11-14-26HC Pad Sec.26-T5N-R63W	MD Reference:	WELL @ 4577.0ft (Ensign 136 RKB - 12')
Well:	State North Platte F-J-26HNB	North Reference:	True
Wellbore:	Wellbore #1	Survey Calculation Method:	Minimum Curvature
Design:	Wellbore #1	Database:	Landmark

Project	SEC.26-T5N-R63W, Weld County, CO		
Map System:	US State Plane 1983	System Datum:	Mean Sea Level
Geo Datum:	North American Datum 1983		Using Well Reference Point
Map Zone:	Colorado Northern Zone		Using geodetic scale factor

Site	State North Platte 11-14-26HC Pad Sec.26-T5N-R63W				
Site Position:		Northing:	1,381,792.75 ft	Latitude:	40.376290
From:	Lat/Long	Easting:	3,303,950.61 ft	Longitude:	-104.409010
Position Uncertainty:	0.0 ft	Slot Radius:	"	Grid Convergence:	0.70 °

Well	State North Platte F-J-26HNB					
Well Position	+N-S	0.0 ft	Northing:	1,381,774.52 ft	Latitude:	40.376240
	+E-W	0.0 ft	Easting:	3,303,950.84 ft	Longitude:	-104.409010
Position Uncertainty		0.0 ft	Wellhead Elevation:	ft	Ground Level:	4,565.0 ft

Wellbore	Wellbore #1				
Magnetics	Model Name	Sample Date	Declination (°)	Dip Angle (°)	Field Strength (nT)
	IGRF2010	11/25/2013	8.34	67.00	52,900

Design	Wellbore #1				
Audit Notes:					
Version:	1.0	Phase:	ACTUAL	Tie On Depth:	0.0
Vertical Section:	Depth From (TVD) (ft)	+N/-S (ft)	+E/-W (ft)	Direction (°)	
	0.0	0.0	0.0	176.32	

Survey Program	Date	1/9/2014			
From (ft)	To (ft)	Survey (Wellbore)	Tool Name	Description	
50.0	10,758.0	Survey #1 (Wellbore #1)	MWD	MWD - Standard	

Survey										
Measured Depth (ft)	Inclination (°)	Azimuth (°)	Vertical Depth (ft)	+N/-S (ft)	+E/-W (ft)	Vertical Section (ft)	Dogleg Rate (°/100ft)	Build Rate (°/100ft)	Turn Rate (°/100ft)	
0.0	0.00	0.00	0.0	0.0	0.0	0.0	0.00	0.00	0.00	
1.0	0.00	171.10	1.0	0.0	0.0	0.0	0.40	0.40	0.00	
SHL 457°FNL & 956°FWL										
50.0	0.20	171.10	50.0	-0.1	0.0	0.1	0.40	0.40	0.00	
138.0	0.80	323.00	138.0	0.3	-0.3	-0.3	1.11	0.68	172.61	
228.0	0.90	319.10	228.0	1.3	-1.2	-1.4	0.13	0.11	-4.33	
356.0	0.80	354.80	356.0	2.9	-1.9	-3.1	0.41	-0.08	27.89	
507.0	1.00	262.00	507.0	3.8	-3.3	-4.0	0.87	0.13	-61.46	
600.0	0.60	15.20	600.0	4.2	-4.0	-4.4	1.46	-0.43	121.72	
693.0	2.00	41.90	692.9	5.8	-2.8	-6.0	1.60	1.51	28.71	
786.0	1.80	51.10	785.9	8.0	-0.6	-8.0	0.39	-0.22	9.89	
880.0	2.10	49.00	879.8	10.0	1.9	-9.9	0.33	0.32	-2.23	

Company:	BONANZA CREEK ENERGY OPERATING	Local Co-ordinate Reference:	Well State North Platte F-J-26HNB
Project:	SEC.26-T5N-R63W	TVD Reference:	WELL @ 4577.0ft (Ensign 136 RKB - 12')
Site:	State North Platte 11-14-26HC Pad Sec.26-T5N-R63W	MD Reference:	WELL @ 4577.0ft (Ensign 136 RKB - 12')
Well:	State North Platte F-J-26HNB	North Reference:	True
Wellbore:	Wellbore #1	Survey Calculation Method:	Minimum Curvature
Design:	Wellbore #1	Database:	Landmark

Survey									
Measured Depth (ft)	Inclination (°)	Azimuth (°)	Vertical Depth (ft)	+N/-S (ft)	+E/-W (ft)	Vertical Section (ft)	Dogleg Rate (°/100ft)	Build Rate (°/100ft)	Turn Rate (°/100ft)
974.0	1.60	33.30	973.8	12.2	3.9	-12.0	0.75	-0.53	-16.70
1,064.0	1.70	34.60	1,063.7	14.4	5.4	-14.0	0.12	0.11	1.44
1,155.0	2.30	70.80	1,154.7	16.1	7.9	-15.6	1.50	0.66	39.78
1,246.0	2.30	63.00	1,245.6	17.5	11.2	-16.8	0.34	0.00	-8.57
1,336.0	2.10	44.20	1,335.5	19.5	14.0	-18.6	0.83	-0.22	-20.89
1,427.0	2.00	46.50	1,426.5	21.8	16.3	-20.7	0.14	-0.11	2.53
1,554.0	1.30	73.40	1,553.4	23.8	19.3	-22.5	0.81	-0.55	21.18
1,681.0	0.70	68.80	1,680.4	24.5	21.4	-23.0	0.48	-0.47	-3.62
1,808.0	2.60	36.10	1,807.4	27.1	23.8	-25.5	1.61	1.50	-25.75
1,934.0	4.00	32.10	1,933.2	33.1	27.8	-31.2	1.13	1.11	-3.17
2,062.0	4.80	37.00	2,060.8	41.2	33.4	-38.9	0.69	0.63	3.83
2,189.0	5.00	44.90	2,187.3	49.3	40.5	-46.6	0.55	0.16	6.22
2,316.0	6.00	47.90	2,313.7	57.7	49.3	-54.4	0.82	0.79	2.36
2,442.0	6.40	42.50	2,439.0	67.3	59.0	-63.4	0.56	0.32	-4.29
2,570.0	7.30	38.90	2,566.1	78.9	68.9	-74.3	0.78	0.70	-2.81
2,698.0	9.50	44.20	2,692.7	92.8	81.4	-87.4	1.82	1.72	4.14
2,826.0	9.10	46.90	2,819.0	107.3	96.1	-100.9	0.46	-0.31	2.11
2,955.0	8.50	44.20	2,946.5	121.1	110.2	-113.8	0.56	-0.47	-2.09
3,083.0	7.60	42.60	3,073.2	134.1	122.5	-126.0	0.72	-0.70	-1.25
3,211.0	6.30	58.30	3,200.3	144.0	134.3	-135.1	1.79	-1.02	12.27
3,340.0	5.30	51.40	3,328.6	151.4	144.9	-141.8	0.94	-0.78	-5.35
3,468.0	7.30	53.70	3,455.9	159.9	156.1	-149.6	1.57	1.56	1.80
3,597.0	7.30	53.70	3,583.8	169.7	169.3	-158.4	0.00	0.00	0.00
3,725.0	7.30	54.40	3,710.8	179.2	182.5	-167.1	0.07	0.00	0.55
3,853.0	7.40	44.00	3,837.7	189.9	194.8	-177.0	1.04	0.08	-8.13
3,982.0	6.40	46.50	3,965.8	200.8	205.8	-187.2	0.81	-0.78	1.94
4,110.0	7.30	43.00	4,092.9	211.6	216.5	-197.3	0.77	0.70	-2.73
4,238.0	7.90	35.80	4,219.8	224.7	227.2	-209.7	0.88	0.47	-5.63
4,367.0	8.90	38.20	4,347.4	239.8	238.6	-224.0	0.82	0.78	1.86
4,495.0	8.70	47.60	4,473.9	254.1	251.8	-237.4	1.13	-0.16	7.34
4,623.0	9.00	47.40	4,600.3	267.4	266.4	-249.8	0.24	0.23	-0.16
4,751.0	8.30	47.90	4,726.9	280.3	280.6	-261.8	0.55	-0.55	0.39
4,880.0	8.00	43.90	4,854.6	293.1	293.7	-273.6	0.50	-0.23	-3.10
5,008.0	7.20	49.70	4,981.5	304.7	306.0	-284.4	0.87	-0.63	4.53
5,137.0	7.00	41.80	5,109.5	315.8	317.4	-294.8	0.77	-0.16	-6.12
5,265.0	5.10	47.20	5,236.8	325.4	326.8	-303.8	1.55	-1.48	4.22
5,393.0	2.90	52.80	5,364.4	331.3	333.6	-309.2	1.74	-1.72	4.38
5,522.0	0.70	99.90	5,493.4	333.1	336.9	-310.8	1.92	-1.71	36.51
5,650.0	0.60	73.90	5,621.4	333.1	338.3	-310.8	0.24	-0.08	-20.31
5,736.0	0.50	118.20	5,707.4	333.1	339.1	-310.7	0.49	-0.12	51.51
5,778.0	0.80	132.50	5,749.4	332.8	339.5	-310.4	0.81	0.71	34.05
5,821.0	3.40	190.10	5,792.3	331.4	339.5	-308.9	7.09	6.05	133.95
5,864.0	6.90	190.10	5,835.2	327.6	338.8	-305.2	8.14	8.14	0.00
5,907.0	11.00	186.40	5,877.6	320.9	337.9	-298.6	9.62	9.53	-8.60
5,950.0	14.60	185.40	5,919.5	311.5	336.9	-289.2	8.39	8.37	-2.33
5,992.0	19.50	182.40	5,959.7	299.2	336.1	-277.0	11.85	11.67	-7.14
6,035.0	24.60	182.20	5,999.5	283.0	335.5	-261.0	11.86	11.86	-0.47
6,078.0	29.20	180.60	6,037.9	263.6	335.0	-241.6	10.83	10.70	-3.72
6,121.0	32.20	181.00	6,074.8	241.7	334.7	-219.7	6.99	6.98	0.93
6,163.0	34.40	180.10	6,109.9	218.6	334.5	-196.7	5.37	5.24	-2.14
6,206.0	38.90	179.40	6,144.4	192.9	334.6	-171.1	10.51	10.47	-1.63
6,249.0	43.40	178.90	6,176.8	164.7	335.1	-142.8	10.49	10.47	-1.16
6,292.0	48.10	179.60	6,206.8	133.9	335.5	-112.1	10.99	10.93	1.63

Company:	BONANZA CREEK ENERGY OPERATING	Local Co-ordinate Reference:	Well State North Platte F-J-26HNB
Project:	SEC.26-T5N-R63W	TVD Reference:	WELL @ 4577.0ft (Ensign 136 RKB - 12')
Site:	State North Platte 11-14-26HC Pad Sec.26-T5N-R63W	MD Reference:	WELL @ 4577.0ft (Ensign 136 RKB - 12')
Well:	State North Platte F-J-26HNB	North Reference:	True
Wellbore:	Wellbore #1	Survey Calculation Method:	Minimum Curvature
Design:	Wellbore #1	Database:	Landmark

Survey									
Measured Depth (ft)	Inclination (°)	Azimuth (°)	Vertical Depth (ft)	+N/-S (ft)	+E/-W (ft)	Vertical Section (ft)	Dogleg Rate (°/100ft)	Build Rate (°/100ft)	Turn Rate (°/100ft)
6,334.0	53.20	180.60	6,233.4	101.4	335.4	-79.7	12.28	12.14	2.38
6,377.0	57.70	180.80	6,257.8	66.0	334.9	-44.4	10.47	10.47	0.47
6,420.0	62.30	181.00	6,279.3	28.8	334.4	-7.3	10.71	10.70	0.47
6,463.0	67.40	179.90	6,297.6	-10.1	334.1	31.5	12.08	11.86	-2.56
6,506.0	72.40	180.10	6,312.3	-50.5	334.1	71.8	11.64	11.63	0.47
6,546.7	74.72	180.58	6,323.8	-89.5	333.8	110.7	5.83	5.71	1.19
T1 531'FNL & 1290'FWL									
6,548.0	74.80	180.60	6,324.2	-90.8	333.8	112.0	5.83	5.72	1.18
6,591.0	75.60	179.90	6,335.2	-132.4	333.6	153.5	2.44	1.86	-1.63
6,634.0	76.20	179.70	6,345.7	-174.1	333.8	195.1	1.47	1.40	-0.47
6,677.0	80.90	179.20	6,354.2	-216.2	334.2	237.2	10.99	10.93	-1.16
6,708.0	84.90	180.10	6,358.0	-247.0	334.4	267.9	13.22	12.90	2.90
6,806.0	90.60	181.10	6,361.9	-344.8	333.3	365.5	5.90	5.82	1.02
6,849.0	91.70	181.00	6,361.0	-387.8	332.6	408.3	2.57	2.56	-0.23
6,891.0	92.20	180.80	6,359.6	-429.8	331.9	450.2	1.28	1.19	-0.48
6,933.0	92.90	180.10	6,357.7	-471.7	331.6	492.0	2.36	1.67	-1.67
6,976.0	93.20	179.60	6,355.4	-514.7	331.7	534.9	1.35	0.70	-1.16
7,018.0	92.70	180.30	6,353.3	-556.6	331.7	576.7	2.05	-1.19	1.67
7,060.0	91.10	180.60	6,351.9	-598.6	331.4	618.6	3.88	-3.81	0.71
7,103.0	88.90	181.00	6,351.9	-641.6	330.8	661.5	5.20	-5.12	0.93
7,145.0	87.20	182.90	6,353.3	-683.5	329.4	703.2	6.07	-4.05	4.52
7,187.0	88.20	183.40	6,355.0	-725.4	327.1	744.9	2.66	2.38	1.19
7,230.0	89.40	183.60	6,355.9	-768.4	324.4	787.6	2.83	2.79	0.47
7,273.0	89.30	183.40	6,356.4	-811.3	321.8	830.2	0.52	-0.23	-0.47
7,315.0	88.90	181.70	6,357.0	-853.2	319.9	872.0	4.16	-0.95	-4.05
7,357.0	88.30	179.60	6,358.0	-895.2	319.5	913.8	5.20	-1.43	-5.00
7,400.0	88.00	177.30	6,359.4	-938.2	320.6	956.8	5.39	-0.70	-5.35
7,442.0	89.30	176.60	6,360.4	-980.1	322.9	998.8	3.52	3.10	-1.67
7,484.0	90.70	176.60	6,360.4	-1,022.0	325.3	1,040.8	3.33	3.33	0.00
7,527.0	91.70	177.10	6,359.5	-1,064.9	327.7	1,083.8	2.60	2.33	1.16
7,569.0	92.00	178.70	6,358.2	-1,106.9	329.2	1,125.7	3.87	0.71	3.81
7,611.0	91.40	180.30	6,356.9	-1,148.9	329.6	1,167.6	4.07	-1.43	3.81
7,654.0	91.10	182.90	6,356.0	-1,191.8	328.4	1,210.4	6.09	-0.70	6.05
7,697.0	91.10	183.90	6,355.2	-1,234.8	325.9	1,253.1	2.33	0.00	2.33
7,739.0	91.40	184.30	6,354.2	-1,276.6	322.9	1,294.7	1.19	0.71	0.95
7,782.0	91.20	183.90	6,353.3	-1,319.5	319.8	1,337.3	1.04	-0.47	-0.93
7,825.0	90.70	183.10	6,352.6	-1,362.4	317.2	1,380.0	2.19	-1.16	-1.86
7,867.0	90.30	181.50	6,352.2	-1,404.4	315.5	1,421.7	3.93	-0.95	-3.81
7,910.0	90.20	179.90	6,352.0	-1,447.4	315.0	1,464.6	3.73	-0.23	-3.72
7,953.0	90.00	178.00	6,351.9	-1,490.4	315.7	1,507.6	4.44	-0.47	-4.42
7,996.0	89.90	179.40	6,352.0	-1,533.4	316.7	1,550.5	3.26	-0.23	3.26
8,038.0	89.60	180.60	6,352.1	-1,575.4	316.7	1,592.4	2.95	-0.71	2.86
8,081.0	90.20	181.10	6,352.2	-1,618.4	316.1	1,635.3	1.82	1.40	1.16
8,124.0	90.60	180.80	6,351.9	-1,661.4	315.4	1,678.1	1.16	0.93	-0.70
8,167.0	92.00	180.40	6,350.9	-1,704.3	314.9	1,721.0	3.39	3.26	-0.93
8,210.0	90.80	181.10	6,349.9	-1,747.3	314.4	1,763.9	3.23	-2.79	1.63
8,253.0	90.00	182.50	6,349.6	-1,790.3	313.0	1,806.7	3.75	-1.86	3.26
8,295.0	89.10	182.20	6,349.9	-1,832.3	311.3	1,848.4	2.26	-2.14	-0.71
8,338.0	90.10	181.30	6,350.2	-1,875.2	310.0	1,891.2	3.13	2.33	-2.09
8,381.0	89.70	180.60	6,350.3	-1,918.2	309.3	1,934.1	1.87	-0.93	-1.63
8,424.0	89.30	180.40	6,350.7	-1,961.2	308.9	1,977.0	1.04	-0.93	-0.47
8,466.0	89.00	180.10	6,351.3	-2,003.2	308.7	2,018.9	1.01	-0.71	-0.71
8,509.0	89.70	180.10	6,351.8	-2,046.2	308.6	2,061.8	1.63	1.63	0.00

Company:	BONANZA CREEK ENERGY OPERATING	Local Co-ordinate Reference:	Well State North Platte F-J-26HNB
Project:	SEC.26-T5N-R63W	TVD Reference:	WELL @ 4577.0ft (Ensign 136 RKB - 12')
Site:	State North Platte 11-14-26HC Pad Sec.26-T5N-R63W	MD Reference:	WELL @ 4577.0ft (Ensign 136 RKB - 12')
Well:	State North Platte F-J-26HNB	North Reference:	True
Wellbore:	Wellbore #1	Survey Calculation Method:	Minimum Curvature
Design:	Wellbore #1	Database:	Landmark

Survey									
Measured Depth (ft)	Inclination (°)	Azimuth (°)	Vertical Depth (ft)	+N/-S (ft)	+E/-W (ft)	Vertical Section (ft)	Dogleg Rate (°/100ft)	Build Rate (°/100ft)	Turn Rate (°/100ft)
8,552.0	89.80	180.10	6,352.0	-2,089.2	308.5	2,104.7	0.23	0.23	0.00
8,595.0	91.30	179.90	6,351.6	-2,132.2	308.5	2,147.6	3.52	3.49	-0.47
8,638.0	90.90	180.10	6,350.7	-2,175.2	308.5	2,190.5	1.04	-0.93	0.47
8,680.0	89.60	180.60	6,350.6	-2,217.2	308.3	2,232.4	3.32	-3.10	1.19
8,723.0	90.10	181.70	6,350.7	-2,260.2	307.4	2,275.3	2.81	1.16	2.56
8,766.0	90.40	182.20	6,350.5	-2,303.2	306.0	2,318.0	1.36	0.70	1.16
8,809.0	91.50	182.20	6,349.8	-2,346.1	304.3	2,360.8	2.56	2.56	0.00
8,851.0	91.00	181.30	6,348.8	-2,388.1	303.0	2,402.6	2.45	-1.19	-2.14
8,894.0	91.60	180.40	6,347.9	-2,431.1	302.4	2,445.5	2.52	1.40	-2.09
8,937.0	92.20	181.50	6,346.4	-2,474.1	301.7	2,488.3	2.91	1.40	2.56
8,980.0	92.20	180.40	6,344.8	-2,517.0	301.0	2,531.1	2.56	0.00	-2.56
9,022.0	91.80	181.00	6,343.3	-2,559.0	300.5	2,573.0	1.72	-0.95	1.43
9,065.0	90.90	180.40	6,342.3	-2,602.0	299.9	2,615.8	2.52	-2.09	-1.40
9,108.0	90.60	180.40	6,341.8	-2,645.0	299.6	2,658.7	0.70	-0.70	0.00
9,151.0	90.90	180.10	6,341.2	-2,688.0	299.4	2,701.6	0.99	0.70	-0.70
9,194.0	90.70	179.90	6,340.6	-2,731.0	299.4	2,744.5	0.66	-0.47	-0.47
9,236.0	90.30	179.60	6,340.2	-2,773.0	299.6	2,786.5	1.19	-0.95	-0.71
9,279.0	90.70	179.70	6,339.8	-2,816.0	299.9	2,829.4	0.96	0.93	0.23
9,322.0	90.90	180.40	6,339.2	-2,858.9	299.9	2,872.3	1.69	0.47	1.63
9,365.0	90.70	181.80	6,338.6	-2,901.9	299.0	2,915.1	3.29	-0.47	3.26
9,407.0	90.00	182.50	6,338.4	-2,943.9	297.5	2,956.9	2.36	-1.67	1.67
9,450.0	89.00	181.80	6,338.8	-2,986.9	295.8	2,999.7	2.84	-2.33	-1.63
9,493.0	88.70	180.40	6,339.6	-3,029.9	295.0	3,042.5	3.33	-0.70	-3.26
9,535.0	89.60	180.10	6,340.3	-3,071.8	294.8	3,084.4	2.26	2.14	-0.71
9,578.0	91.00	180.10	6,340.0	-3,114.8	294.8	3,127.3	3.26	3.26	0.00
9,621.0	90.90	181.10	6,339.3	-3,157.8	294.3	3,170.2	2.34	-0.23	2.33
9,664.0	90.00	182.20	6,339.0	-3,200.8	293.1	3,213.0	3.31	-2.09	2.56
9,706.0	88.80	182.40	6,339.4	-3,242.8	291.4	3,254.8	2.90	-2.86	0.48
9,749.0	89.90	182.70	6,339.9	-3,285.7	289.5	3,297.5	2.65	2.56	0.70
9,792.0	91.50	182.90	6,339.4	-3,328.7	287.4	3,340.3	3.75	3.72	0.47
9,835.0	91.70	181.70	6,338.2	-3,371.6	285.6	3,383.0	2.83	0.47	-2.79
9,878.0	90.90	181.70	6,337.2	-3,414.6	284.4	3,425.8	1.86	-1.86	0.00
9,920.0	90.00	182.00	6,336.9	-3,456.6	283.0	3,467.6	2.26	-2.14	0.71
9,963.0	91.10	182.40	6,336.5	-3,499.5	281.4	3,510.4	2.72	2.56	0.93
10,006.0	90.20	180.30	6,336.0	-3,542.5	280.3	3,553.2	5.31	-2.09	-4.88
10,049.0	90.30	178.10	6,335.8	-3,585.5	280.9	3,596.1	5.12	0.23	-5.12
10,092.0	91.50	178.30	6,335.1	-3,628.5	282.3	3,639.1	2.83	2.79	0.47
10,134.0	91.70	179.60	6,333.9	-3,670.5	283.1	3,681.1	3.13	0.48	3.10
10,177.0	92.40	180.40	6,332.4	-3,713.4	283.1	3,723.9	2.47	1.63	1.86
10,220.0	91.50	181.10	6,330.9	-3,756.4	282.5	3,766.8	2.65	-2.09	1.63
10,263.0	90.40	181.30	6,330.2	-3,799.4	281.6	3,809.6	2.60	-2.56	0.47
10,306.0	89.90	180.80	6,330.1	-3,842.4	280.8	3,852.5	1.64	-1.16	-1.16
10,348.0	89.50	180.30	6,330.3	-3,884.4	280.4	3,894.4	1.52	-0.95	-1.19
10,391.0	90.10	179.90	6,330.5	-3,927.4	280.3	3,937.3	1.68	1.40	-0.93
10,434.0	89.30	179.90	6,330.7	-3,970.4	280.4	3,980.2	1.86	-1.86	0.00
10,477.0	90.10	180.10	6,330.9	-4,013.4	280.4	4,023.1	1.92	1.86	0.47
10,519.0	91.10	179.60	6,330.5	-4,055.4	280.5	4,065.0	2.66	2.38	-1.19
10,562.0	91.60	179.00	6,329.5	-4,098.4	281.0	4,107.9	1.82	1.16	-1.40
10,605.0	91.40	178.80	6,328.4	-4,141.3	281.9	4,150.9	0.66	-0.47	-0.47
10,648.0	90.50	179.20	6,327.6	-4,184.3	282.6	4,193.8	2.29	-2.09	0.93
10,690.0	90.50	179.90	6,327.3	-4,226.3	283.0	4,235.8	1.67	0.00	1.67
10,703.0	90.70	179.70	6,327.1	-4,239.3	283.0	4,248.7	2.18	1.54	-1.54
10,758.0	90.70	179.70	6,326.5	-4,294.3	283.3	4,303.6	0.00	0.00	0.00

Company:	BONANZA CREEK ENERGY OPERATING	Local Co-ordinate Reference:	Well State North Platte F-J-26HNB
Project:	SEC.26-T5N-R63W	TVD Reference:	WELL @ 4577.0ft (Ensign 136 RKB - 12')
Site:	State North Platte 11-14-26HC Pad Sec.26-T5N-R63W	MD Reference:	WELL @ 4577.0ft (Ensign 136 RKB - 12')
Well:	State North Platte F-J-26HNB	North Reference:	True
Wellbore:	Wellbore #1	Survey Calculation Method:	Minimum Curvature
Design:	Wellbore #1	Database:	Landmark

Survey									
Measured Depth (ft)	Inclination (°)	Azimuth (°)	Vertical Depth (ft)	+N/-S (ft)	+E/-W (ft)	Vertical Section (ft)	Dogleg Rate (°/100ft)	Build Rate (°/100ft)	Turn Rate (°/100ft)
BHL 470'FSL & 1290'FWL									

Checked By: _____	Approved By: _____	Date: _____
-------------------	--------------------	-------------