



Scale: 5" / 100'
Measured Depth Log

Well Name State North Platte P-T- 26HNC

Location NENE Sec 26 T5N R63W

State Colorado

County Weld

Country USA

Rig Number Ensign 128

API Number 05-123-38267-00

Region DJ Basin

Field Wattenberg

Spud Date 10/31/2013

Drilling Completed 11/7/2013

Surface Coordinates 778 FNL x 764 FEL (Lat: 40.37528, 104.39641)

Bottom Hole Coordinates 470 FSL x 1450 FEL (Lat: 40.3 6446, 104.39910)

Ground Elevation 4563'

K.B. Elevation 4578'

Logged Interval 5915' To 10941'

Total Depth 10941'

Formation Niobrara, C-Chalk

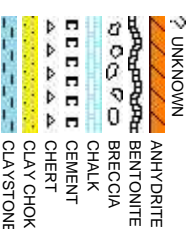
Type of Drilling Fluid H2O, LSND

Company Bonanza Creek

Name Paul McKay

Company Bonanza Creek

Address 410 17th Street
Denver, CO 80202



Operator

Energy Inc.

Geologist

Energy Inc.

, Suite 1500

2022

Rock Types

	CONGLOMERATE		MARLSTONE		SHALY SANDSTONE
	DOLOMITE		METAMORPHIC		SHALY SILTSTONE
	DOLOMITIC LIMESTONE		NO SAMPLE		SILTY SHALE
	GRANITE		SALT		SILTSTONE
	GYPSUM		SANDSTONE		TUFF
	IGNEOUS		SALT-PEPPER SANDSTONE		WELDED TUFF
	SIDERITE or LIMONITE		SHALE		
	LIMESTONE		SHALE COLORED		
			SHALE GRAY		

Accessories

	GASTROPOD		ARGILLITE GRAIN		HEAVY MINERAL		ANHYDRITE STRINGER
	INOCERAMUS		B BENTONITE		KAOLIN		BENTONITE STRINGER
	ALGAE		BITUMINOUS SUBSTANCE		MARLSTONE		COAL STRINGER
	AMPHIPORA		BRECCIA FRAGMENTS		MICACEOUS		DOLOMITE STRINGER
	BELEMNITE		CALCAREOUS		MINERAL CRYSTALS		GYPSUM STRINGER
	BIOCLASTIC		CARBONACEOUS FLAKES		NODULES		LIMESTONE STRINGER
	BRACHIOPOD		CHERT		PHOSPHATE PELLETS		MARLSTONE (CALC) STRG
	BRYOZOA		CHERT		PYRITE		MARLSTONE (DOL) STRG
	CEPHALOPOD		COAL - THIN BEDS		SALT CAST		SANDSTONE STRINGER
	CORAL		DOLOMITIC		SANDY		SHALE STRINGER
	CRINOID		FELDSPAR		SILTY		SILTSTONE STRINGER
	ECHINOID		FERRUGINOUS PELLET				
	FISH		FERRUGINOUS		TUFFACEOUS		
	FORAMINIFERA		ANHYDRITIC				
	F FOSSIL		ARGILLACEOUS		GYPSIFEROUS	Stringer	

Other Symbols

	OIL SHOW		DST INTERVAL		WIRELINE TESTED - LEFT		E EARTHY
	DEAD		FAULT		WIRELINE TESTED - RT		FX FINELY XLAN
	EVEN		FORMATION TOP		DRILL STEM TEST		GS GRAINSTONE
	QUESTIONABLE		GAS SHOW		MN DEPTH		L LITHOGRAPHIC
	SPOTTED STAINING		OIL SHOW		MN DEPTH UP		MX MICROXLAN
			CONNECTION (UP)			Rounding	
			CONNECTION (DOWN)		ANGULAR		MS MUDSTONE
Porosity			CONNECTION GAS		NORMAL FAULT		PS PACKSTONE
	E EARTHY		CONNECTION GAS (LEFT)		OVERTURNED STRATA		B SUBANG
	F FENESTRAL		TRIP GAS		REVERSE FAULT		P SUBUND
	F FRACTURE		TRIP GAS (LEFT)		CASING	Sorting	
	X INTERCRYSTALLINE		DOWN TIME GAS		SIDEWALL CORE (LEFT)		M MODERATE
	X INTERCRYSTALLINE		DOWN TIME GAS (LEFT)		SIDEWALL CORE (RIGHT)		P POOR
	M MOLDIC		CORE - LOST		SLIDE		BS BOUNDSTONE
	O ORGANIC		CORE - RECOVERED		SURVEY		C CHALKY
					CRYPTOXLAN		W WELL

ROP
ROF
GAMMA

Bit Data
Bit #: 2
Type: VM513
Size: 8.75
Depth In: 5,915 '
Jets: 5/14
S/N: 4004964

Total Gas & Chromatograph

GAS
C1
C2
C3
C4

COLUMBINE LOGGING RIGGED
UP ON 11/03/2013 MANNED
2-PERSON LOGGING WITH
BLOODHOUND GAS
CHROMATOGRAPH UNIT #0680
BEGAN ON 11/03/2013

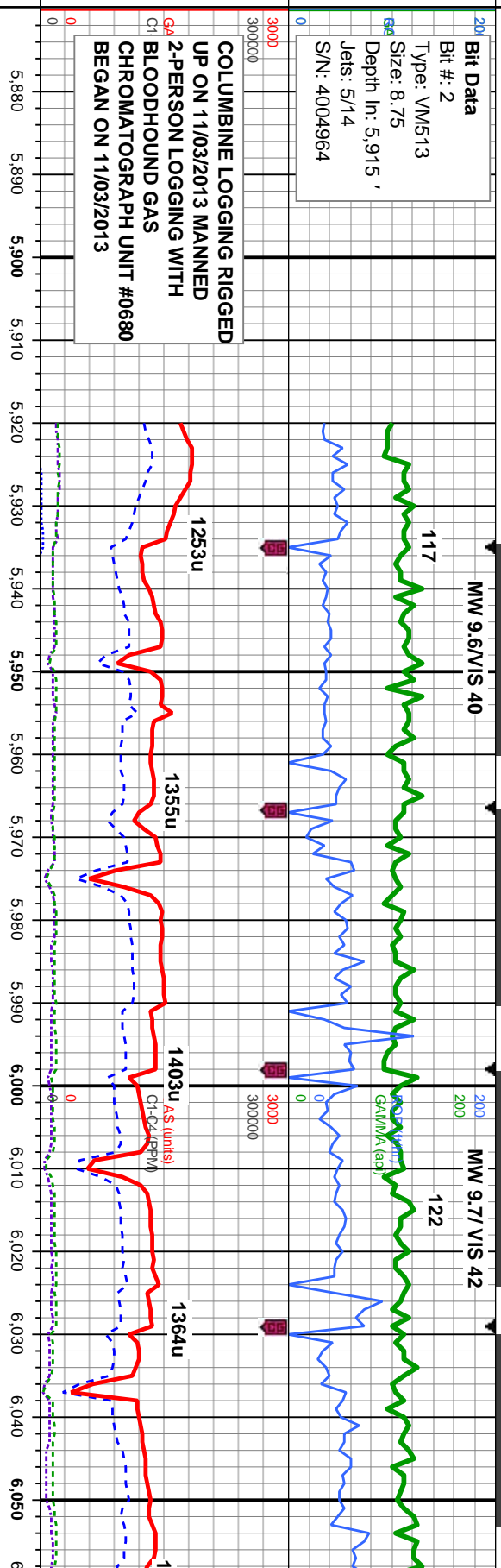
Depth Labels

% Lith

Well Bore
TVD

Oil Show

Images



85% SLTY SH: ltgy - medgy , occ dk gy, mod sft - sl firm, sb blkly - blkly, occ plty, rthy - gt, mtx, arg - slty, tr pyr incl 15% SHY SS: off wh - ltgy, occ s&p , mod hd - hd, sb blkly - blkly, vf-f gr, mics ,tr glauc

90-85% SLTY SH: ltgy - medgy , occ dk gy, mod sft - sl firm, sb blkly - blkly, occ plty, rthy - gt, mtx, arg - slty, tr pyr incl 10-15% SHY SS: off wh - ltgy, occ s&p , mod hd - hd, sb blkly - blkly, vf-f gr, mics

100% SLTY SH

MD: 5,947 '
TVD: 5,844.02 '
Inclination: 2.7 °
Azimuth: 206.1 °
VS: -617.3 '

MD: 5,978 '
TVD: 5,874.94 '
Inclination: 5.8 °
Azimuth: 193.4 °
VS: -615.03 '

MD: 6,008 '
TVD: 5,904.66 '
Inclination: 9.5 °
Azimuth: 188.2 °
VS: -611.04 '

MD: 6,039 '
TVD: 5,935.04 '
Inclination: 13.4 °
Azimuth: 186.4 °
VS: -604.9 '



MW 9.6/ VIS 40

MW 9.4/ VIS 40

154

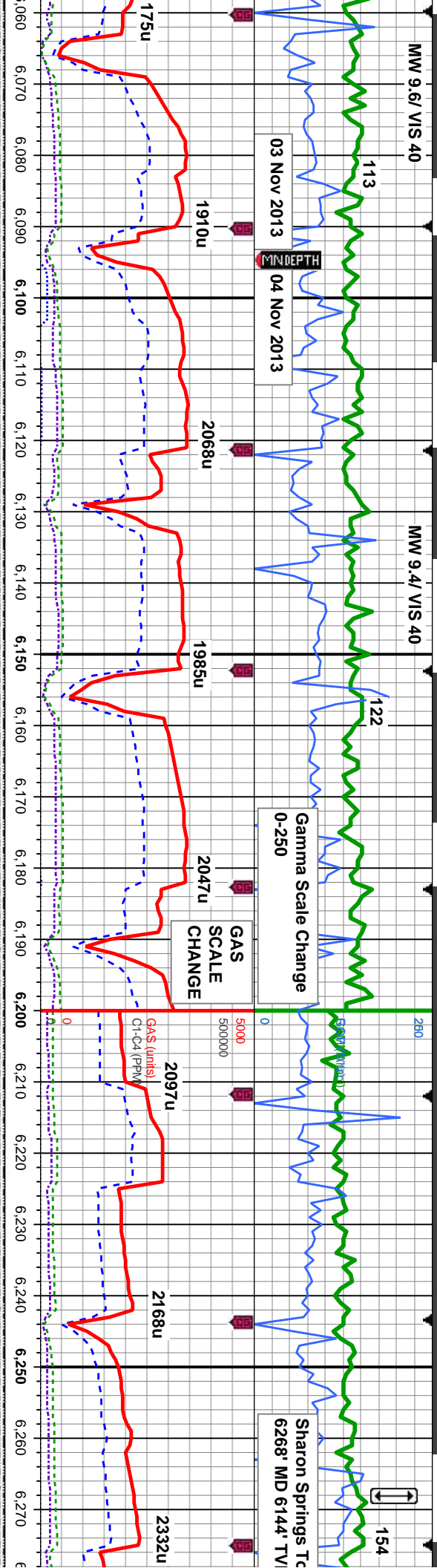
03 Nov 2013 04 Nov 2013

MINDEPTH

Gamma Scale Change
0-250

GAS
SCALE
CHANGE

Sharon Springs Tc
6268' MD 6144' TVD



MD: 6,070 ' TVD: 5,964.97 ' Inclination: 16.7 ° Azimuth: 185.9 ° VS: -596.88 '	MD: 6,101 ' TVD: 5,994.43 ' Inclination: 19.6 ° Azimuth: 186.9 ° VS: -587.25 '	MD: 6,131 ' TVD: 6,022.54 ' Inclination: 21.3 ° Azimuth: 186.1 ° VS: -576.8 '	MD: 6,160 ' TVD: 6,049.39 ' Inclination: 23.1 ° Azimuth: 185 ° VS: -565.89 '	MD: 6,192 ' TVD: 6,078.5 ' Inclination: 25.9 ° Azimuth: 181.7 ° VS: -552.74 '	MD: 6,223 ' TVD: 6,105.93 ' Inclination: 29.6 ° Azimuth: 179 ° VS: -538.55 '	MD: 6,254 ' TVD: 6,132.42 ' Inclination: 33 ° Azimuth: 180.1 ° VS: -522.75 '
--	--	---	--	---	--	--

lgy - medgy, occ dk gy, mod sft - sl ky, occ ply, rthy - gt, mtx; arg - silty, tr	100-95% SLTY SH: lgy - medgy, occ dk gy, mod sft - sl firm, sb blk - blk, occ ply, rthy - gt, mtx; arg - silty, 0-5% SHY SS: off wh - lgy, occ s&p, mod hd - hd, sb	100% SLTY SH: lgy - medgy, occ dk gy, mod sft - sl firm, sb blk - blk, occ ply, rthy - gt, mtx; arg - silty	100% SLTY SH: medgy - dkgy, occ lgy, occ wh, mo sft - firm, sb ply - blk, occ ply, rthy - gt, mtx; arg - sl
--	---	--	--



MW 9.4/VIS42

223

150

158

207

Niobrara A Chalk
Top 6464' MD,
6282' TVD

89
Niobrara f
6493' MD,

IGC (17/17)
GAMMA (api)

2844u

2931u

3505u

3661u

3840u

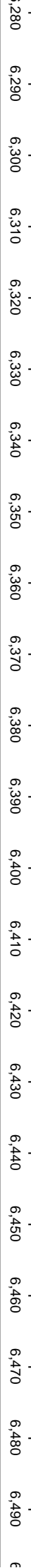
3840u

4528u

Gas Scale Change
0-6000u

Gas (units)
Circ (PPM)

Gas (units)
Circ (PPM)



MD: 6,286'
VD: 6,158.81'
Inclination: 35.9°
Azimuth: 184.1°
VS: -504.87'

MD: 6,317'
TVD: 6,183.37'
Inclination: 39.3°
Azimuth: 186.1°
VS: -486.05'

MD: 6,380'
TVD: 6,229.49'
Inclination: 46.5°
Azimuth: 185.2°
VS: -443.36'

MD: 6,411'
TVD: 6,250.15'
Inclination: 49.9°
Azimuth: 184.3°
VS: -420.39'

MD: 6,442'
TVD: 6,269.33'
Inclination: 53°
Azimuth: 183.2°
VS: -396.17'

MD: 6,473'
TVD: 6,287.26'
Inclination: 56.3°
Azimuth: 181.8°
VS: -371.15'

100% SLTY SH: medgy - dkgy, occ lgy, mod sft - firm, sb ply - blk, occ ply, rthy - gt, mtx; arg - slty, sl calc, tr diss pyr, sl tr bent

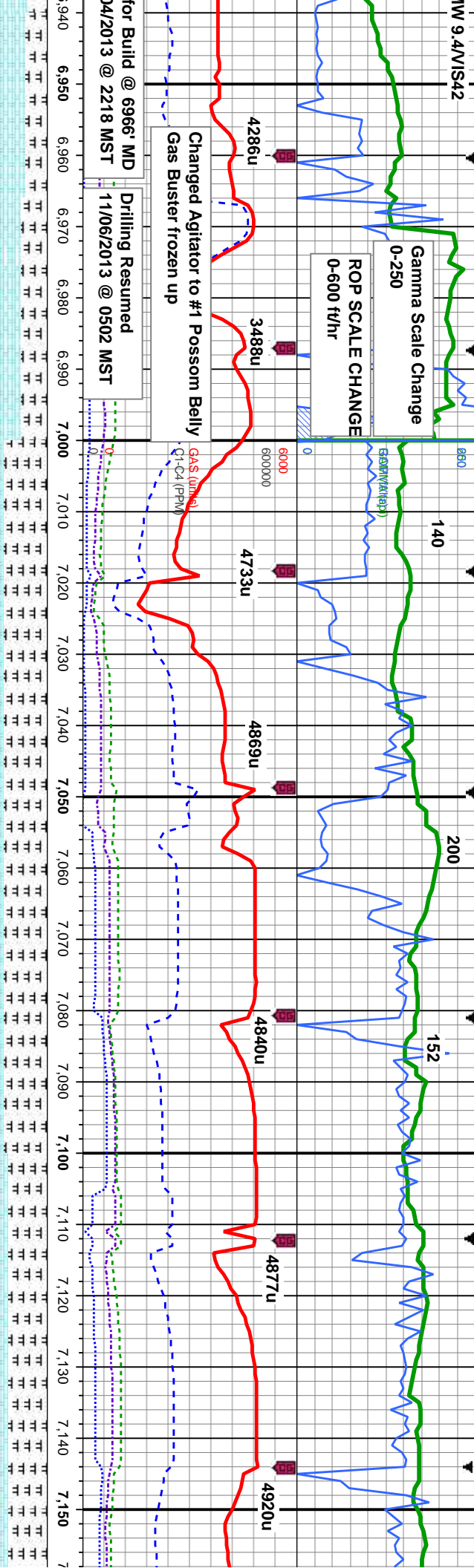
100% SLTY SH: medgy - dkgy, occ lgy, mod sft - firm, sb ply - blk, occ ply, rthy - gt, mtx; arg - slty, sl calc, tr diss pyr, tr bent

TVD Scale Change
6000-8000 feet

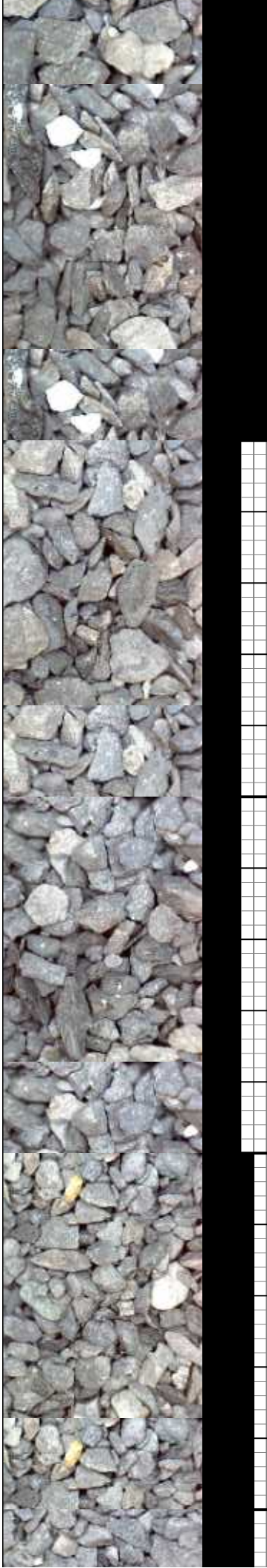
100-65% SLTY SH: medgy - dkgy, blk, occ lgy-gy brn, mod sft - firm, ply - sb blk, sl rthy - gt, mtx; arg - slty, sl calc, 0-15%: MRLST: med - dk gy, blk, sb ply - blk, sl frm - mod hd, arg-sly tex, mtx; calc 0-20% CHK: lt gy, lt gy brn, mot, sb ply-blk, sft - sl frm, rthy-sb wxy, abnt bent, occ pyr; mod-slw bl string, tr scat flor, med-thn gn-wh ring, tr sin, fr od

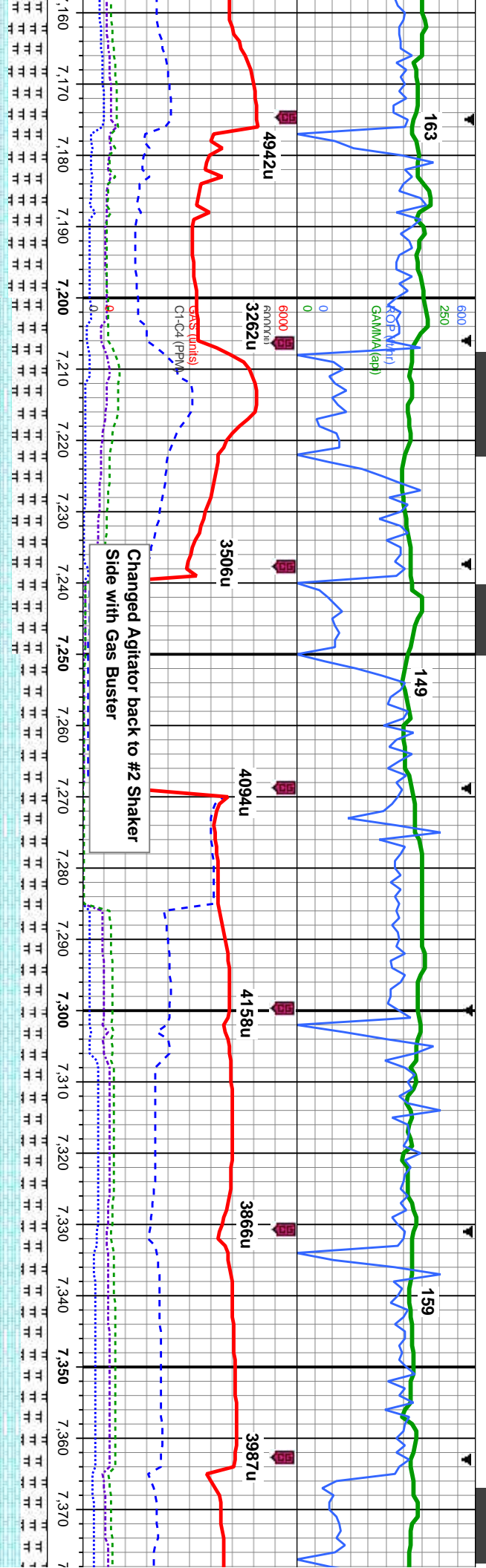
55-25% CHK: lt gy, lt gy brn, mot, s firm, rthy-sb wxy, mtx; v calc 35-75%: dk gy, blk, sb ply - blk, sl frm - mc; calc 10-0% SLTY SH: medgy lgy-gy brn, mod sft - firm, ply - sb mtx; arg - slty, sl calc, tr bent, tr pyr tr scat flor, med-thn gn-wh ring, tr s





75-70% CHK: med-dk gy, med brn, wh-crm ip, mot, c: sb blk - sb ply sft - mod hd, rthy-wxy, mtx: v calc, occ imbd cal cones 25-30%: MRLST: blk, dk gy, sb blk - blk, occ sb ply, sl frm - hd, arg-sly tex, mtx: calc; scat cmt: mod-fast bl string, no flr, med-thk yel-wh ring, mod sin	MD: 6,997' TVD: 6,434.15' Inclination: 90.8° Azimuth: 183.1° VS: 116.52'	MD: 7,029' TVD: 6,434.03' Inclination: 89.6° Azimuth: 182.9° VS: 148.22'	MD: 7,060' TVD: 6,434.55' Inclination: 88.5° Azimuth: 182.7° VS: 178.92'	MD: 7,091' TVD: 6,435.25' Inclination: 88.9° Azimuth: 182.7° VS: 209.6'	MD: 7,122' TVD: 6,435.79' Inclination: 89.1° Azimuth: 182.5° VS: 240.29'	MD: 7,154' TVD: 6,435' Inclination: 89.1° Azimuth: 182.5° VS: 271.97'
50% CHK: dk gy, occ lt grv, mot, sb blk - sb ply sft - mod hd, rthy-wxy, mtx: v calc, occ imbd cal cones 50%: MRLST: blk, dk gy, sb blk - blk, occ sb ply, sl frm - hd, arg-sly tex, mtx: calc; tr cmt: mod-fast bl string, no flr, med-thk yel-wh ring, fr od						
55% CHK: lt grv-dk gy, mot, sb blk - sb ply sft - mod hd, rthy-wxy, mtx: v calc, 45%: MRLST: blk, dk gy, sb blk - blk, occ sb ply, sl frm - hd, arg-sly tex, mtx: calc; tr cmt: mod-fast bl string, no flr, med-thk yel-wh ring, mod sin						





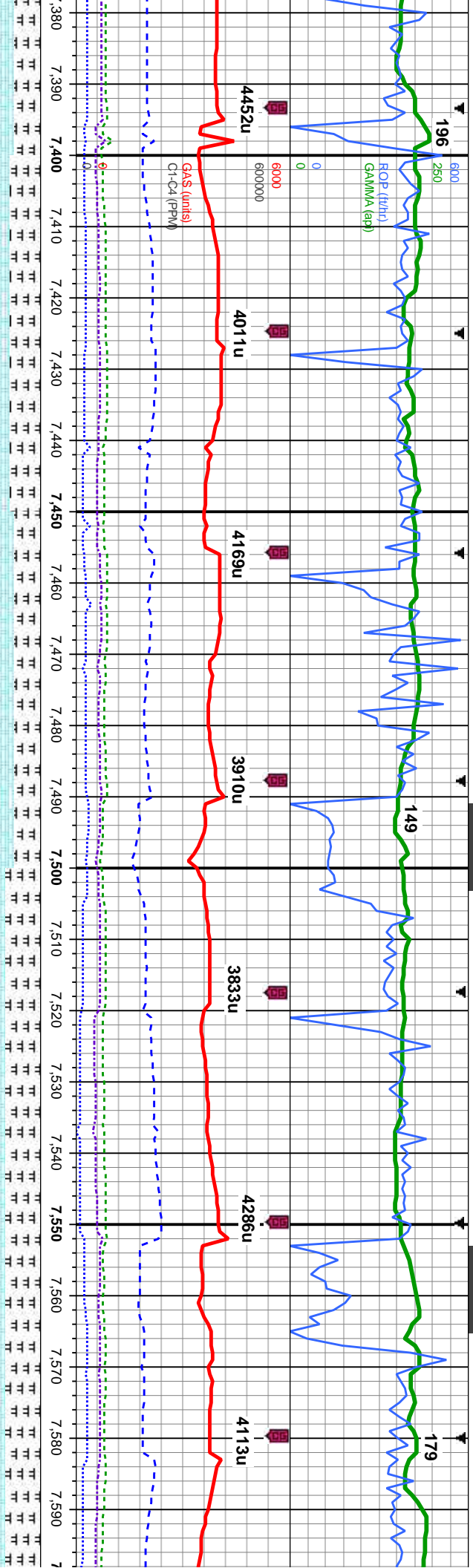
96' ° 90.3 ° 22.9 °	MD: 7,185' ° TVD: 6,435.55' ° Inclination: 91.2 ° Azimuth: 183.1 ° VS: 302.68'	MD: 7,216' ° TVD: 6,435.01' ° Inclination: 90.8 ° Azimuth: 182.4 ° VS: 333.37'	MD: 7,248' ° TVD: 6,434.96' ° Inclination: 89.4 ° Azimuth: 181 ° VS: 364.97'	MD: 7,279' ° TVD: 6,435.15' ° Inclination: 89.9 ° Azimuth: 181 ° VS: 395.52'	MD: 7,310' ° TVD: 6,434.96' ° Inclination: 90.8 ° Azimuth: 181 ° VS: 426.07'	MD: 7,341' ° TVD: 6,434.63' ° Inclination: 90.4 ° Azimuth: 180.6 ° VS: 456.6'	MD: 7,372' ° TVD: 6,434.7' ° Inclination: 89 ° Azimuth: 180 ° VS: 487.09'
---------------------------	--	--	--	--	--	---	---

mod hd, rthy-wxy, mtk; v calc,
sl frm - hd, arg-sly tex, mtk;
h stmg, no flor, med-thn

60-70% CHK: lt gry-dk gy, mot, sb blkly - sb ply sft - mod hd, rthy-wxy, mtk; v
calc, 40-30%: MRLST: blk, dk gy, sb blkly - blkly, occ sb ply, sl frm - hd, arg-sly
tex, mtk; calc, occ imbd cal concs, tr bent, mod-slw blshwh stmg, no flor,
med-thk yel-wh ring, mod str, fr od

70% CHK: lt gry-med gy, occ dk gry, mot, sb blkly - sb ply sft - mo
mtk; v calc, 30%: MRLST: blk, dk gy, sb blkly - blkly, occ sb ply, sl f
arg-sly tex, mtk; calc, occ imbd cal concs, some bent, tr inoc fos, r
stmg, no flor, thk bri yel-wh ring, mod str, mod od

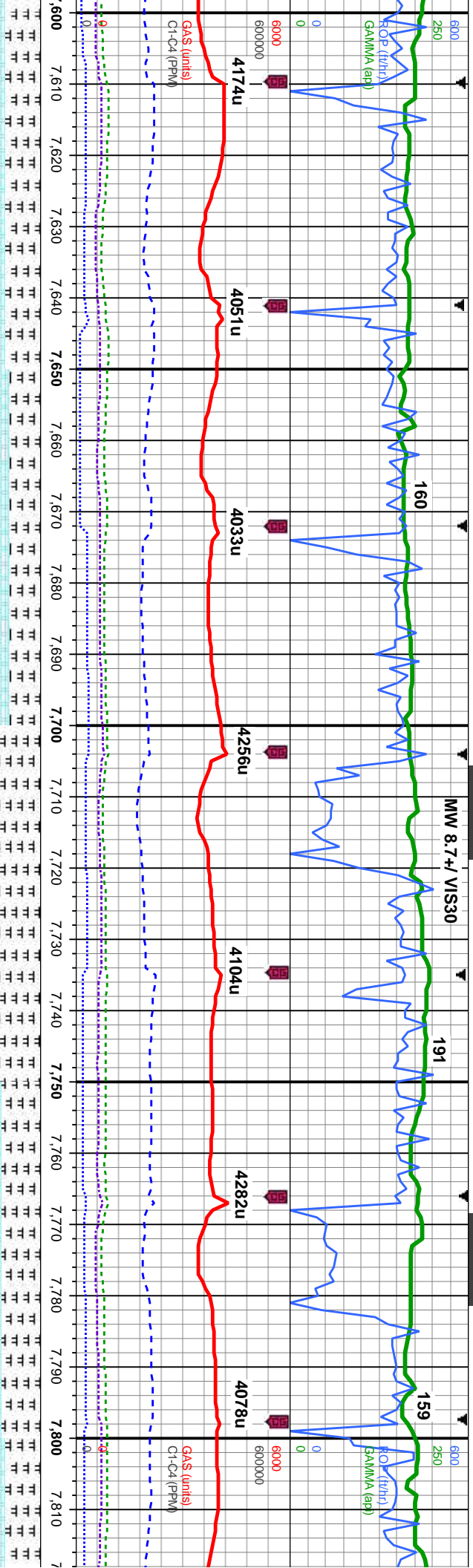




11°	MD: 7,404' TVD: 6,435.11' Inclination: 89.3° Azimuth: 179.7° VS: 518.51'	MD: 7,435' TVD: 6,435.02' Inclination: 91° Azimuth: 180.4° VS: 548.97'	MD: 7,465' TVD: 6,434.47' Inclination: 91.1° Azimuth: 179.7° VS: 578.44'	MD: 7,496' TVD: 6,434.04' Inclination: 90.5° Azimuth: 179° VS: 608.82'	MD: 7,528' TVD: 6,433.96' Inclination: 89.8° Azimuth: 178.3° VS: 640.11'	MD: 7,589' TVD: 6,434.9' Inclination: 89.1° Azimuth: 179.2° VS: 699.77'
-----	--	--	--	--	--	---

hd hd, rthy-wxy, mod-fast bl	65-70% CHK: lt gry-med gy, occ dk gry, mot, sb blk - sb pily sft - mod hd, rthy-wxy, mty: v calc, 35-30%: MRLST: blk, dk gy, sb blk - blk, occ sb pily, sl frm - hd, arg-sily tex, mty: calc, occ imbd cal concs, some bent, tr inoc fos, mod-fast bl string, tr scat flor, med-thn gr-wh ring, fr stn, mod od	60% CHK: lt gry-med gy, occ dk gry, mot, sb blk - sb pily sft - mod hd, rthy-wxy, mty: v calc, 40%: MRLST: blk, dk gy, sb blk - blk, occ sb pily, sl frm - tex, mty: calc, occ imbd cal concs, tr bent, tr lse cal, occ inoc fos, mod-fast bl-gn string, no flor, med-thk yel-wh ring, mod stn, fr od
------------------------------	--	---





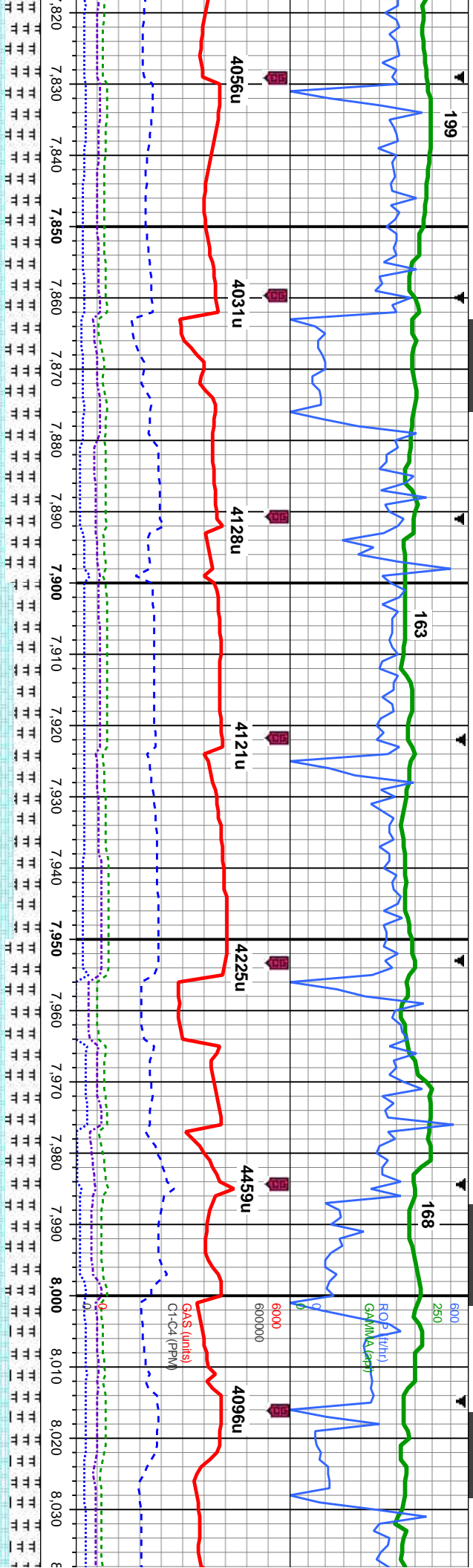
MD: 7,620 ' TVD: 6,435.22 ' Inclination: 89.7 ° Azimuth: 179.4 ° VS: 730.15 '	MD: 7,651 ' TVD: 6,435.28 ' Inclination: 90.1 ° Azimuth: 179 ° VS: 760.52 '	MD: 7,682 ' TVD: 6,435.01 ' Inclination: 90.9 ° Azimuth: 178.8 ° VS: 790.86 '	MD: 7,713 ' TVD: 6,434.49 ' Inclination: 91 ° Azimuth: 179 ° VS: 821.19 '	MD: 7,745 ' TVD: 6,434.16 ' Inclination: 90.2 ° Azimuth: 178.8 ° VS: 852.5 '	MD: 7,776 ' TVD: 6,434.08 ' Inclination: 90.1 ° Azimuth: 179.7 ° VS: 882.88 '	MD: 7,807 ' TVD: 6,433.86 ' Inclination: 90.7 ° Azimuth: 180.1 ° VS: 913.32 '
---	---	---	---	--	---	---

60-65% CHK: lt gry-med gy, occ dk gry, mot, sb blk - sb pily sft - mod hd, rthy-wxy, mtx; v calc, 40-35%: MRLST: blk, dk gy, sb blk - blk, occ sb pily, sl frm - hd, arg-sily tex, mtx; calc; occ imbd cal concs, tr bent, tr lse cal, occ inoc fos, mod-fast blshw stmg, no flor, med-thk yel-wh ring, fr sin, fr od

50-55% CHK: lt gry-med dk gy, mot, sb blk - sb pily, sft - mod hd, rthy-wxy, mtx; v calc, 50-45%: MRLST: dk gy-blk, sb blk - blk, occ sb pily, sl frm - hd, arg-sily tex, mtx; calc; occ imbd cal concs, tr bent, occ inoc fos, mod-slow bl stmg, no flor, med-thn gr-wh ring, tr sin, fr od

60% CHK
calc, 40%
mtx; calc;
flor, med-

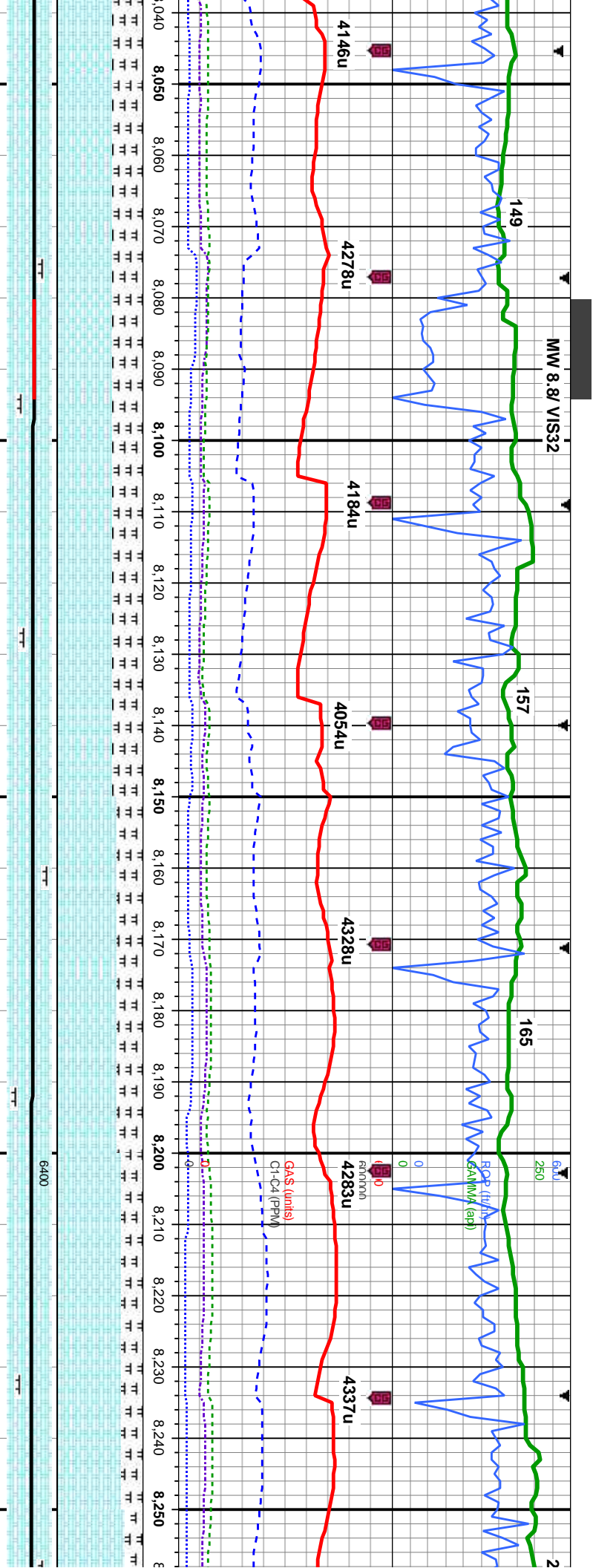




MD: 7,838 ' TVD: 6,433.67 ' Inclination: 90 ° Azimuth: 179.6 ° VS: 943.76 '	MD: 7,870 ' TVD: 6,433.89 ' Inclination: 89.2 ° Azimuth: 179.6 ° VS: 975.15 '	MD: 7,901 ' TVD: 6,434.25 ' Inclination: 89.5 ° Azimuth: 179.9 ° VS: 1,005.58 '	MD: 7,932 ' TVD: 6,434.19 ' Inclination: 90.7 ° Azimuth: 180.4 ° VS: 1,036.05 '	MD: 7,962 ' TVD: 6,433.56 ' Inclination: 91.7 ° Azimuth: 180.3 ° VS: 1,065.54 '	MD: 7,993 ' TVD: 6,432.64 ' Inclination: 91.7 ° Azimuth: 180.8 ° VS: 1,096.04 '	MD: 8,025 ' TVD: 6,431.97 ' Inclination: 90.7 ° Azimuth: 181.7 ° VS: 1,127.59 '
---	---	---	---	---	---	---

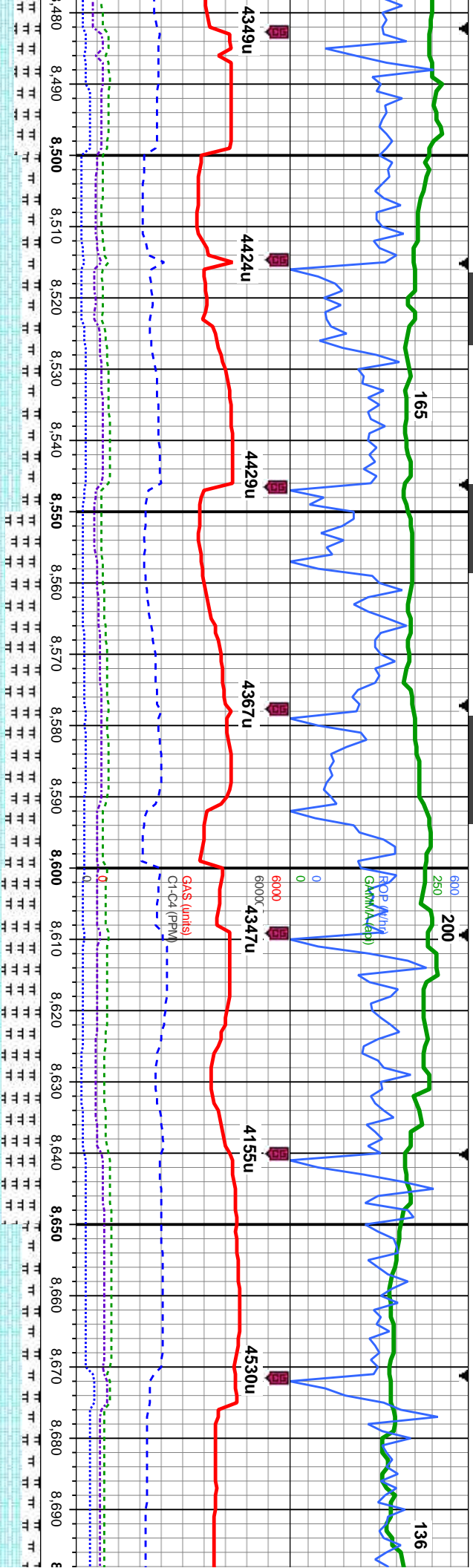
It gry-med dk gy, mot, sb blkly - sb ply, sft - mod hd, rthy-wxy, mtx; v : MRLST: dk gy-blk, sb blkly - blkly, occ sb ply, sl frm - hd, arg-sly tex, occ imbd cal concs, tr bent, occ inoc fos, mod-slow blshwh stimg, no thin yel ring, fr sin, fr od	70-60% CHK: It gry-med dk gy, mot, sb blkly - sb ply, sft - mod hd, rthy-wxy, mtx; v calc, 30-40%: MRLST: dk gy-blk, sb blkly - blkly, occ sb ply, sl frm - hd, arg-sly tex, mtx; calc; occ imbd cal concs, tr bent, tr pyr, occ inoc fos, fr od, mod-slow bis stimg, no flur, med-thn grn-yel ring, tr sin	65% CHK: It gry-med dk gy v calc, 35%: MRLST: dk gy tex, mtx; calc; occ imbd ca stimg, no flur, med-thn yel-l
---	--	--





MD: 8,056 ' TVD: 6,431.84 ' Inclination: 89.8 ° Azimuth: 181.3 ° VS: 1,158.18 '	MD: 8,087 ' TVD: 6,432.3 ' Inclination: 88.5 ° Azimuth: 181.8 ° VS: 1,188.78 '	MD: 8,119 ' TVD: 6,433.14 ' Inclination: 88.5 ° Azimuth: 182 ° VS: 1,220.39 '	MD: 8,150 ' TVD: 6,433.89 ' Inclination: 88.7 ° Azimuth: 181.8 ° VS: 1,251.01 '	MD: 8,181 ' TVD: 6,434.38 ' Inclination: 89.5 ° Azimuth: 181.7 ° VS: 1,281.62 '	MD: 8,212 ' TVD: 6,434.65 ' Inclination: 89.5 ° Azimuth: 181.3 ° VS: 1,312.21 '	MD: 8,243 ' TVD: 6,434.7 ' Inclination: 90.3 ° Azimuth: 181.3 ° VS: 1,342.79 '
65-70% CHK: lt gry-med dk gy, mot, sb blk - sb blk, sft - mod hd, rthy-wxy, mtx; v calc, 33-30%: MRLST: dk gy-blk, sb blk - blk, occ sb blk, sl frm - hd, arg-sly tex, mtx; calc, occ imbd cal concs, tr pyr, occ lse cal, occ inoc fos, mod-slow bl string, no flor, med-thn gn-yel ring, fr str, g od						
75-80% CHK: lt gry-med dk gy, mot, sb blk - sb blk, sft - mod hd, rthy-wxy, mtx; v calc, 25-20%: MRLST: dk gy-blk, sb blk - blk, occ sb blk, sl frm - hd, arg-sly tex, mtx; calc, occ imbd cal incl, tr inoc fos, mod-thn yel-oring ring, mod str, fr od						





MD: 8,492 '
TVD: 6,432.87 '
Inclination: 90.8 °
Azimuth: 181.1 °
VS: 1,588.48 '

MD: 8,523 '
TVD: 6,432.47 '
Inclination: 90.7 °
Azimuth: 181.1 °
VS: 1,619.04 '

MD: 8,554 '
TVD: 6,432.25 '
Inclination: 90.1 °
Azimuth: 182 °
VS: 1,649.63 '

MD: 8,585 '
TVD: 6,432.31 '
Inclination: 89.7 °
Azimuth: 182 °
VS: 1,680.27 '

MD: 8,616 '
TVD: 6,432.52 '
Inclination: 89.5 °
Azimuth: 182 °
VS: 1,710.91 '

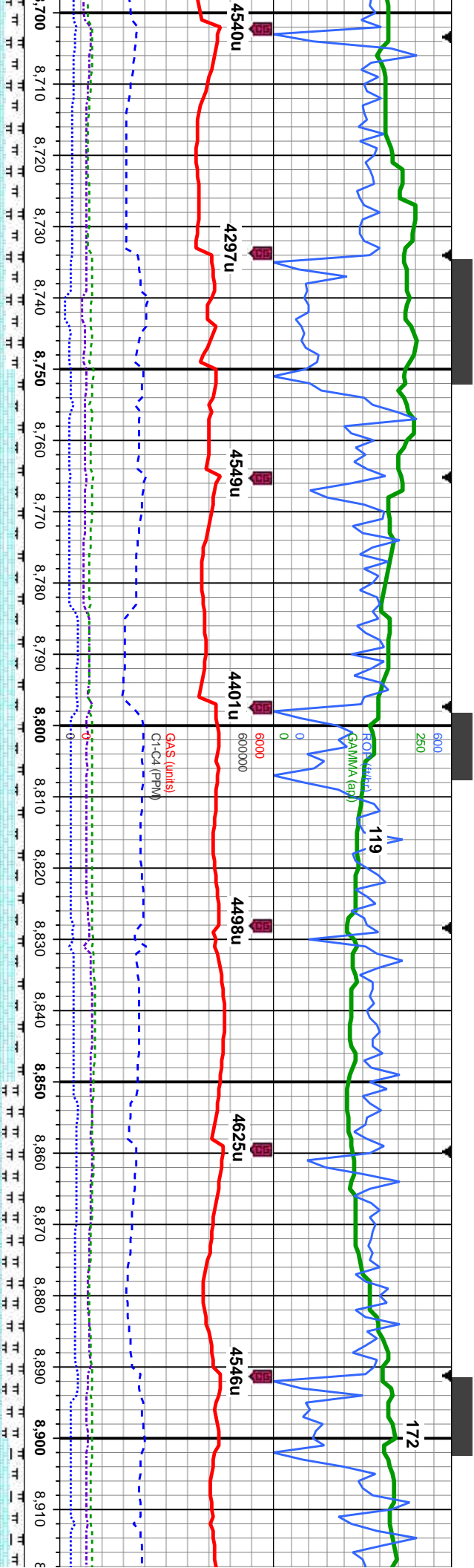
MD: 8,647 '
TVD: 6,432.71 '
Inclination: 89.8 °
Azimuth: 181.8 °
VS: 1,741.54 '

MD: 8,678 '
TVD: 6,432.58 '
Inclination: 90.7 °
Azimuth: 181.8 °
VS: 1,772.16 '

80-60% CHK: lt gy-med dk gy, mot, sb blkly - sb pily, sft - mod hd, rthy-wxy, mtk;
v calc, 20-40%: MRLST: dk gy-blk, sb blkly - blkly, occ sb pily, sl frm - hd, arg-sily
tex, mtk, calc; occ imbd cal incl, tr inoc fos, slow bl string, no flor, med-thn yel
ring, fr str, fr od

55-80% CHK: lt-med dk gy, mot, sb blkly - sb pily, sft - mod hd, rthy-wxy, mtk; v
calc, 45-20%: MRLST: dk gy-blk, sb blkly - blkly, occ sb pily, sl frm - hd, arg-sily
tex, mtk; calc; occ imbd cal incl, tr inoc fos, mod-fast blshw string, no flor,
med-thn grn-wh ring, tr str, fr od

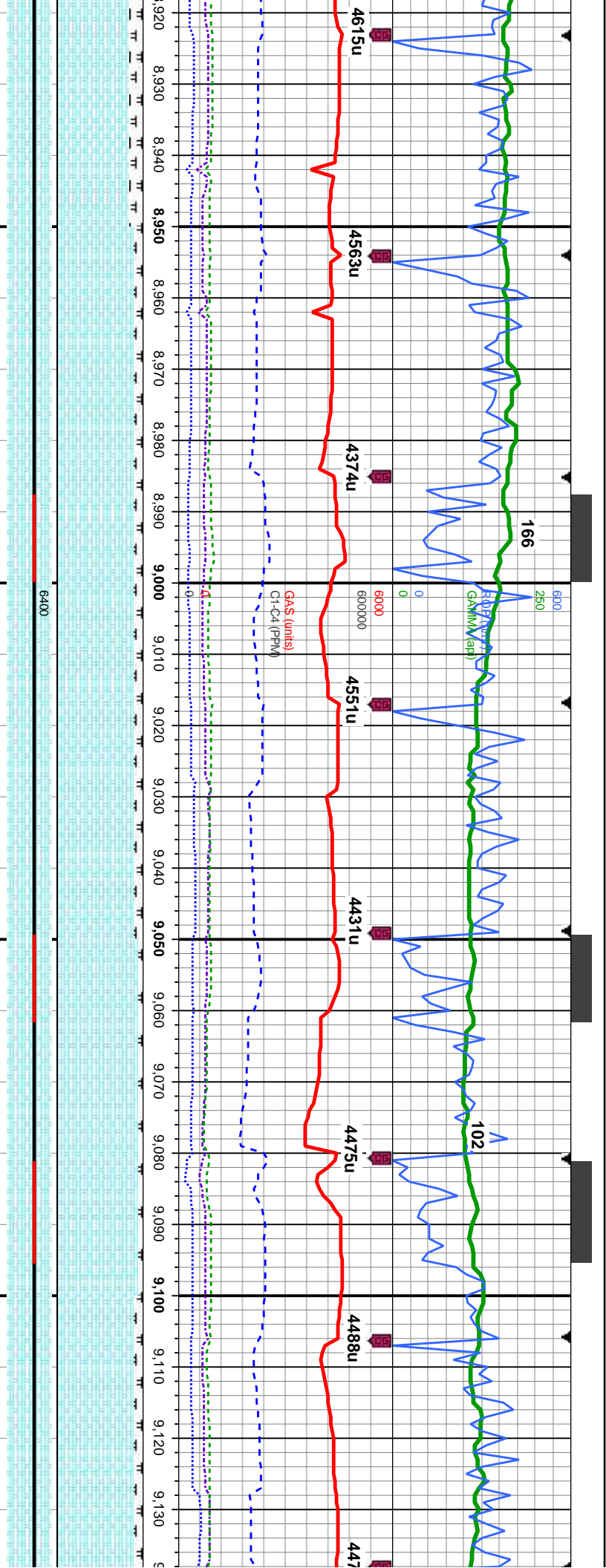




MD: 8,710 ' TVD: 6,432.1 ' Inclination: 91 ° Azimuth: 181.7 ° VS: 1,803.76 '	MD: 8,741 ' TVD: 6,431.83 ' Inclination: 90 ° Azimuth: 181 ° VS: 1,834.34 '	MD: 8,772 ' TVD: 6,431.89 ' Inclination: 89.8 ° Azimuth: 180.8 ° VS: 1,864.88 '	MD: 8,803 ' TVD: 6,432.05 ' Inclination: 89.6 ° Azimuth: 180.8 ° VS: 1,895.41 '	MD: 8,835 ' TVD: 6,432.1 ' Inclination: 90.2 ° Azimuth: 180.3 ° VS: 1,926.9 '	MD: 8,866 ' TVD: 6,431.75 ' Inclination: 91.1 ° Azimuth: 179.9 ° VS: 1,957.36 '	MD: 8,898 ' TVD: 6,431.36 ' Inclination: 90.3 ° Azimuth: 179 ° VS: 1,988.74 '
--	---	---	---	---	---	---

80-90% CHK: lt-med dk gy, mot, sb blk - sb pily, sft - mod hd, rthy-wxy, mtx; v calc, 20-10%: MRLST: dk gy-blk, sb blk - blk, occ sb pily, sl frm - hd, arg-sily tex, mtx; calc, occ imbd cal incl, tr inoc fos, mod-slow blshw stmg, no flor, thk wh sp ring, fr stn, fr od	90-75% CHK: lt-med dk gy, mot, sb blk - sb pily, sft - mod hd, rthy-wxy, mtx; v calc, 10-25%: MRLST: dk gy-blk, sb blk - blk, occ sb pily, sl frm - hd, arg-sily tex, mtx; calc, occ imbd cal incl, tr inoc fos, g od, mod bl stmg, no flor, med gn-yel ring, tr stn	85-90% CHK: calc, 15-10%: tex, mtx; calc, gn-yel ring, tr s
--	--	---





MD: 8,929 '
TVD: 6,431.28 '
Inclination: 90 °
Azimuth: 178.7 °
VS: 2,019.07 '

MD: 8,960 '
TVD: 6,431.15 '
Inclination: 90.5 °
Azimuth: 178.3 °
VS: 2,049.36 '

MD: 8,991 '
TVD: 6,431.15 '
Inclination: 89.5 °
Azimuth: 178.1 °
VS: 2,079.62 '

MD: 9,023 '
TVD: 6,431.26 '
Inclination: 90.1 °
Azimuth: 178.3 °
VS: 2,110.85 '

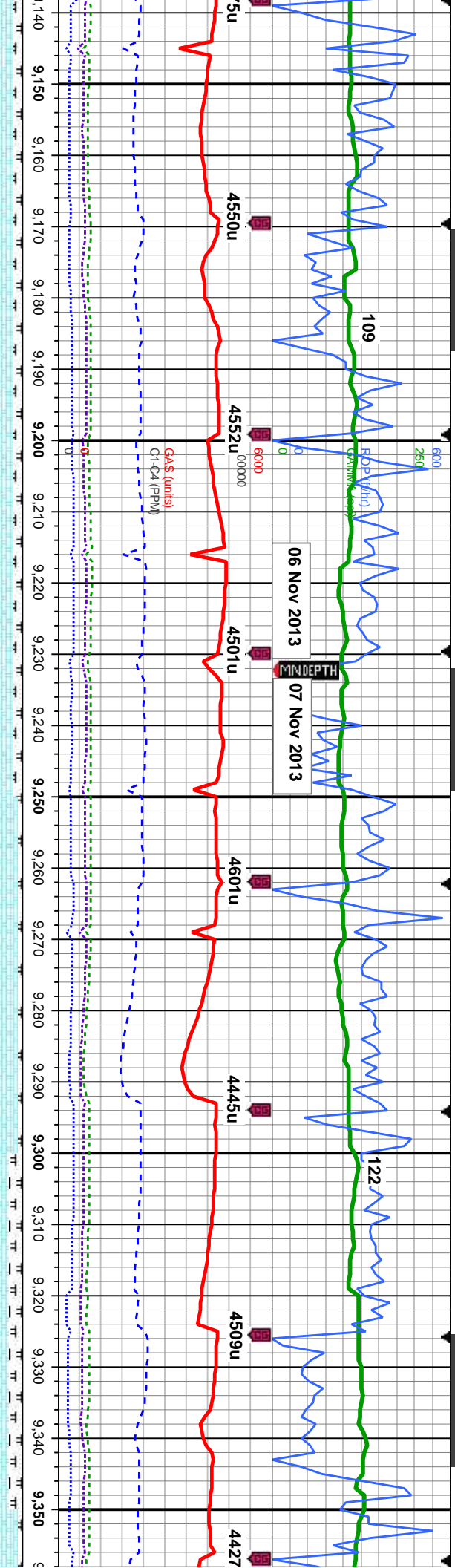
MD: 9,054 '
TVD: 6,431.23 '
Inclination: 90 °
Azimuth: 178.8 °
VS: 2,141.15 '

MD: 9,085 '
TVD: 6,431.28 '
Inclination: 89.8 °
Azimuth: 180.1 °
VS: 2,171.54 '

MD: 9,117 '
TVD: 6,431.31 '
Inclination: 90.1 °
Azimuth: 180.3 °
VS: 2,203 '

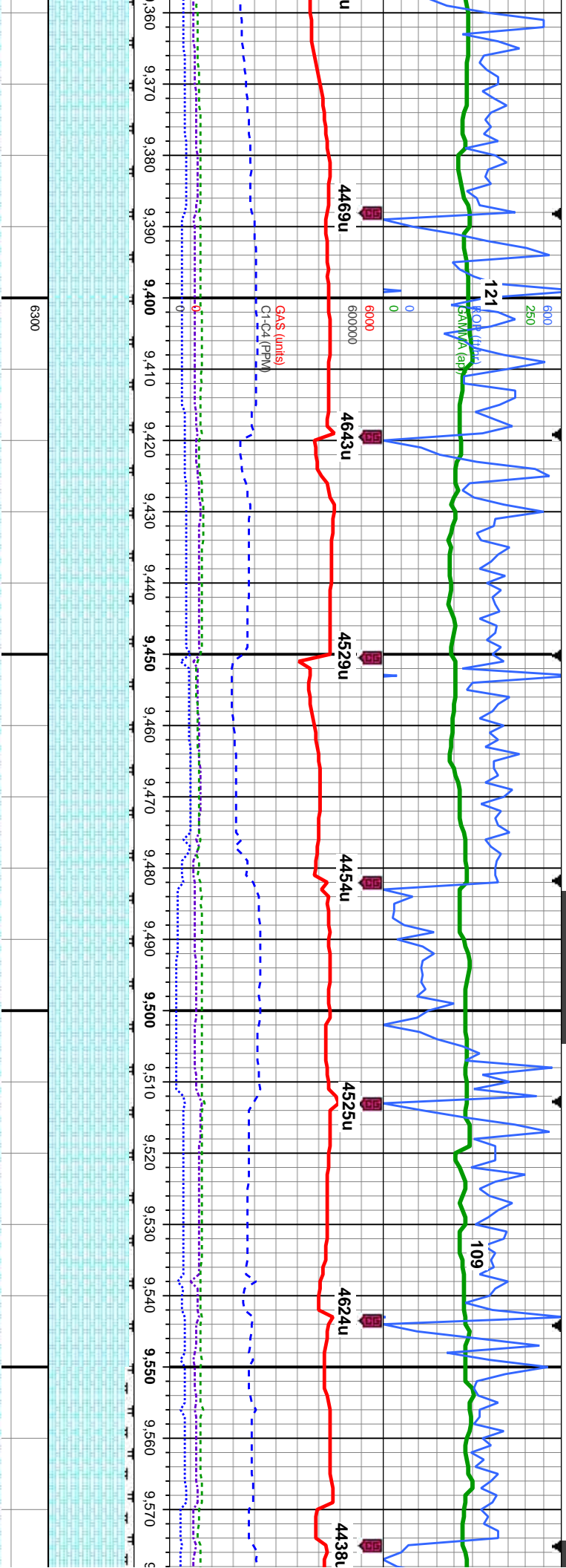
lt-med dk gy, mot, sb blk, rthy-wxy, mt; v
MRLST: dk gy-blk, sb blk, occ sb ply, sl frm - hd, arg-sly
occ imbd cal incl, tr inoc fos, fr od, mod bl stmg, no flor, med
90-95% CHK: lt-med dk gy, mot, sb blk, rthy-wxy, mt; v
calc, 10-5%: MRLST: dk gy-blk, sb blk, occ sb ply, sl frm - hd, arg-sly
tex, mt; calc, occ imbd cal incl, tr inoc fos, g od, mod bl stmg, no flor, med
gn-yel ring, tr stn
90% CHK: lt-med dk gy, mot
calc, 10%: MRLST: dk gy-blk
mt; calc, occ imbd cal incl, t
gn-yel ring, tr stn





MD: 9,146 ' TVD: 6,431.24 ' Inclination: 90.2 ° Azimuth: 179.7 ° VS: 2,231.49 ' MD: 9,178 ' TVD: 6,431.38 ' Inclination: 89.3 ° Azimuth: 179.9 ° VS: 2,262.9 ' 90-95% CHK: lt-med dk gy, mot, sb blkly - sb pily, sft - mod hd, rthy-wxy, mtx: v calc, 10-5%: MRLST: dk gy-blk, sb blkly - blkly, occ sb pily, sl frm - hd, arg-sily tex, mtx; calc; occ imbd cal incl, tr inoc fos, g od, mod bl stimg, no flor, med grn-yel ring, tr sin	
MD: 9,209 ' TVD: 6,431.75 ' Inclination: 89.3 ° Azimuth: 180.3 ° VS: 2,293.37 ' MD: 9,240 ' TVD: 6,431.94 ' Inclination: 90 ° Azimuth: 181.5 ° VS: 2,323.91 ' MD: 9,271 ' TVD: 6,431.67 ' Inclination: 91 ° Azimuth: 181.8 ° VS: 2,354.51 ' MD: 9,303 ' TVD: 6,431 ' Inclination: 91.4 ° Azimuth: 181.5 ° VS: 2,366.1 ' MD: 9,334 ' TVD: 6,430.49 ' Inclination: 90.5 ° Azimuth: 181.3 ° VS: 2,416.68 ' 85-95% CHK: lt-med dk gy, mot, sb blkly - sb pily, sft - mod hd, rthy-wxy, mtx: v calc, 15-5%: MRLST: dk gy-blk, sb blkly - blkly, occ tex, mtx; calc; occ imbd cal incl, tr inoc fos, fr od, s med grn-yel ring, tr sin	

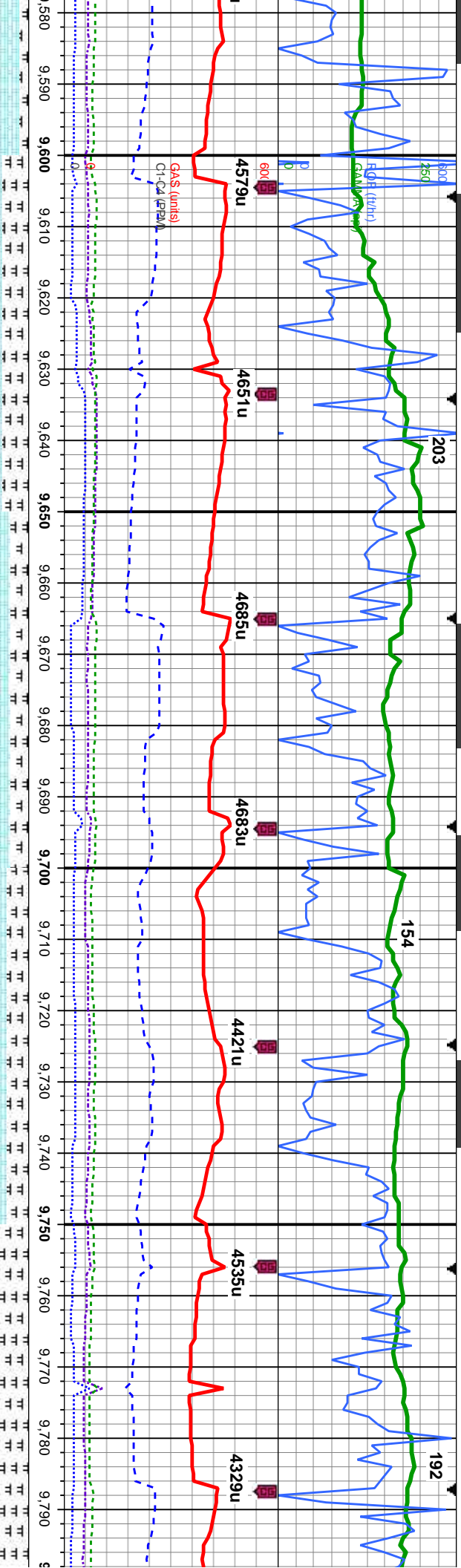




D: 9,366 ' TV: 6,430.43 ' Inclination: 89.7 ° Azimuth: 181 ° VS: 2,448.23 '	MD: 9,396 ' TVD: 6,430.56 ' Inclination: 89.8 ° Azimuth: 180.6 ° VS: 2,477.78 '	MD: 9,428 ' TVD: 6,430.62 ' Inclination: 90 ° Azimuth: 180.4 ° VS: 2,509.27 '	MD: 9,458 ' TVD: 6,430.36 ' Inclination: 91 ° Azimuth: 180.3 ° VS: 2,538.77 '	MD: 9,489 ' TVD: 6,429.84 ' Inclination: 90.9 ° Azimuth: 181.1 ° VS: 2,569.29 '	MD: 9,521 ' TVD: 6,429.26 ' Inclination: 91.2 ° Azimuth: 181.5 ° VS: 2,600.85 '	MD: 9,552 ' TVD: 6,428.58 ' Inclination: 91.3 ° Azimuth: 181.1 ° VS: 2,631.42 '	MD: 9,582 ' TVD: 6,427.84 ' Inclination: 91.4 ° Azimuth: 181.1 ° VS: 2,661.91 '
---	---	---	---	---	---	---	---

sft - mod hd, rthy-wxy, mtk: v sb pily, sl frm - hd, arg-sily low mod bl string, no flr,	85-95% CHK: lt-med dk gy, mot, sb blk, sft - mod hd, rthy-wxy, mtk: v calc, 15-5%: MRLST: dk gy-blk, sb blk - blk, occ sb pily, sl frm - hd, arg-sily tex, mtk, calc, occ imbd cal incl, tr inoc fos, g od, mod bl wlt string, no flr, med gn-yel ring, fr stn	95-90% CHK: lt-med dk gy, mot, sb blk, sft - mod hd, rthy-wxy, mtk: v calc, 5-10%: MRLST: dk gy-blk, sb blk - blk, occ sb pily, sl frm - hd, arg-sily tex, mtk, calc, occ imbd cal incl, tr inoc fos, g od, mod bl wlt string, no flr, med gn-yel ring, fr stn
--	---	---





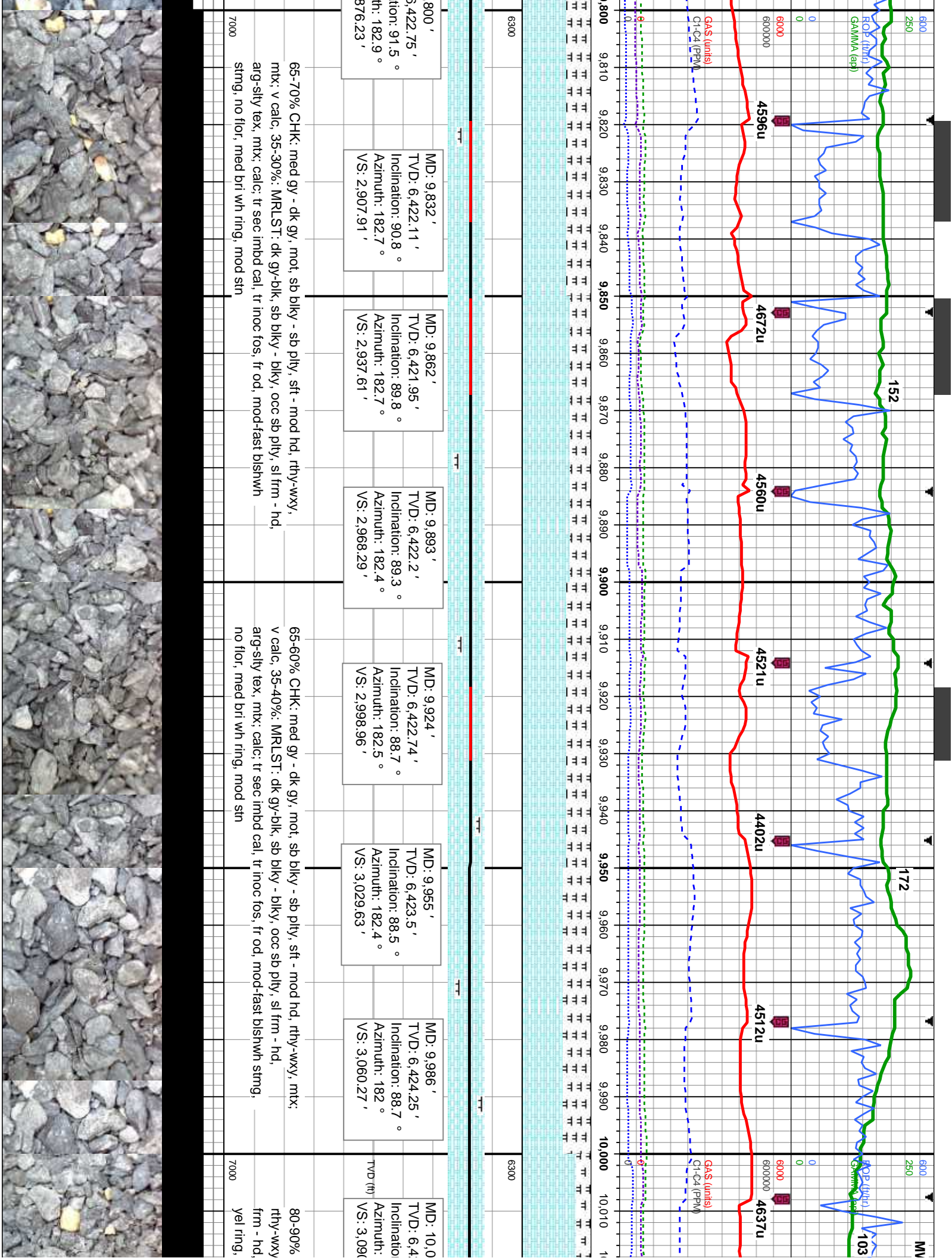
6300

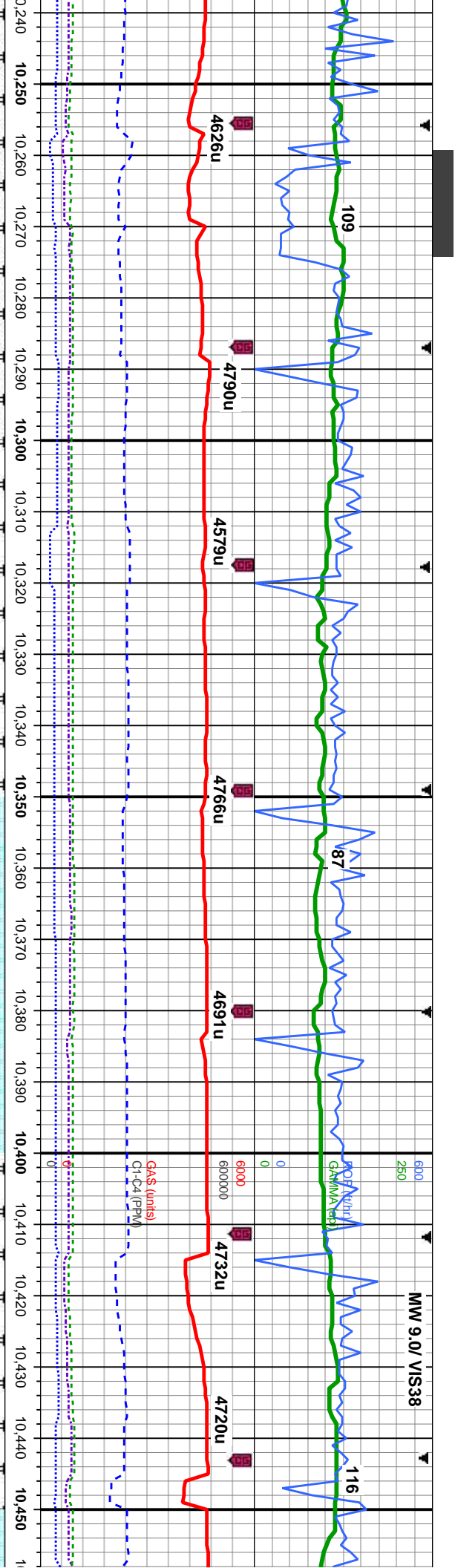
MD: 9,583 ' TVD: 6,427.69 ' Inclination: 92.0 ° Azimuth: 180.4 ° VS: 2,661.93 '	MD: 9,614 ' TVD: 6,426.63 ' Inclination: 91.9 ° Azimuth: 180.8 ° VS: 2,692.43 '	MD: 9,644 ' TVD: 6,425.64 ' Inclination: 91.9 ° Azimuth: 181.1 ° VS: 2,721.97 '	MD: 9,675 ' TVD: 6,424.72 ' Inclination: 91.5 ° Azimuth: 181.5 ° VS: 2,752.53 '	MD: 9,707 ' TVD: 6,424.11 ' Inclination: 90.7 ° Azimuth: 182.2 ° VS: 2,784.14 '	MD: 9,738 ' TVD: 6,423.83 ' Inclination: 90.3 ° Azimuth: 182.9 ° VS: 2,814.82 '	MD: 9,769 ' TVD: 6,423.46 ' Inclination: 91.1 ° Azimuth: 182.9 ° VS: 2,845.53 '	MD: 9,790 ' TVD: 6,423.00 ' Inclination: 91.1 ° Azimuth: 182.9 ° VS: 2,876.00 '
---	---	---	---	---	---	---	---

70-80% CHK: med dk gy, mot, sb blk - sb pty, sft - mod hd, rthy-wxy, mtx: v calc, 30-20%: MRLST: dk gy-blk, sb blk - blk, occ sb pty, sl frm - hd, arg-sily tex, mtx; calc; occ imbd cal incl, tr inoc fos, fr od, mod bl wht milky-string, no floor, med gn-yel ring, fr stn

75% CHK: med dk gy, mot, sb blk - sb pty, sft - mod hd, rthy-wxy, mtx: v calc, 25%: MRLST: dk gy-blk, sb blk - blk, occ sb pty, sl frm - hd, arg-sily tex, mtx; calc; occ imbd cal incl, tr inoc fos, fr od, mod bl wht milky-string, no floor, med gn-yel ring, fr stn



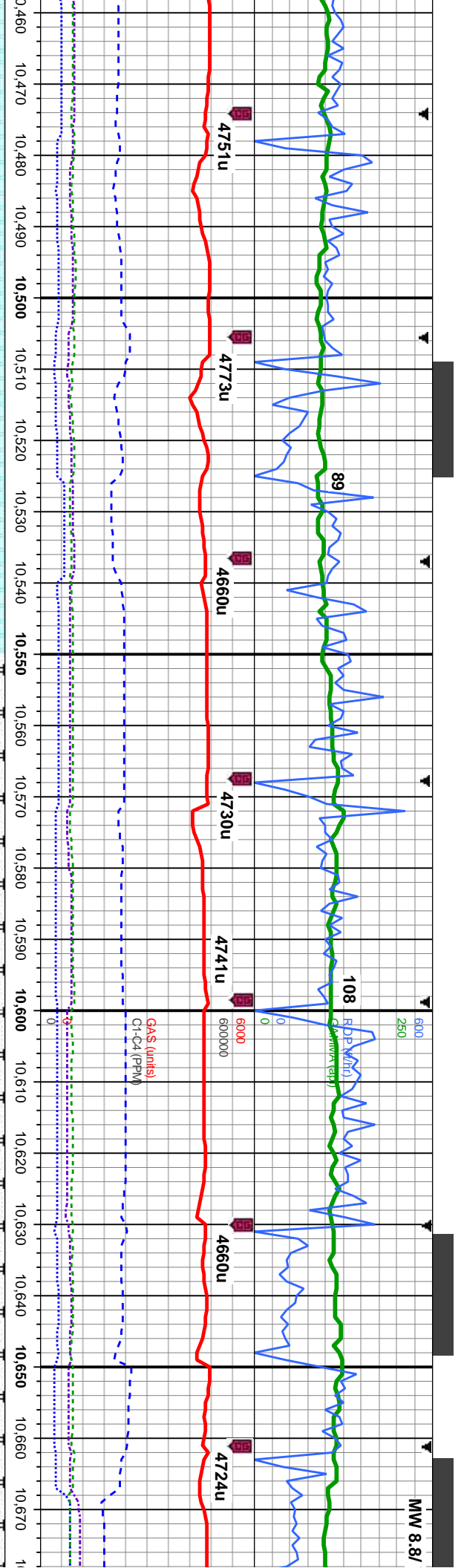




MD: 10,265 ' TVD: 6,423.84 ' Inclination: 89.3 ° Azimuth: 180.3 ° VS: 3,335 '	MD: 10,296 ' TVD: 6,424.3 ' Inclination: 89 ° Azimuth: 180.1 ° VS: 3,365.47 '	MD: 10,328 ' TVD: 6,424.63 ' Inclination: 89.8 ° Azimuth: 180.1 ° VS: 3,396.91 '	MD: 10,359 ' TVD: 6,424.63 ' Inclination: 90.2 ° Azimuth: 179.7 ° VS: 3,427.36 '	MD: 10,390 ' TVD: 6,424.58 ' Inclination: 90 ° Azimuth: 179.2 ° VS: 3,457.75 '	MD: 10,422 ' TVD: 6,424.49 ' Inclination: 90.3 ° Azimuth: 178.8 ° VS: 3,489.08 '	MD: 10,453 ' TVD: 6,424.2 ' Inclination: 90 ° Azimuth: 178 ° VS: 3,519.4 '
---	---	--	--	--	--	--

crn, mot, sb blk - sb pily, sft - mod hd, rthy-wxy, gy-blk, sb blk - blk, occ sb pily, sl frm - hd, mod blshwn string, no flor, thin bri yel-arnb ring, tr	95-100% CHK: lt gy-med gy, wht-crm, mot, sb blk - sb pily, sft - mod hd, rthy-wxy, mtu: v calc, 5-0%: MRLST: dk gy-blk, sb blk - blk, occ sb pily, sl frm - hd, arg-sily tex, mtu: calc, tr sec cal incl, g od, fast blshwn string, no flor, mod bri wh yel ring, mod stn	95-100% CHK: lt gy-med gy, wht-crm, mot, sb blk - sb pily, sft - mod hd, rthy-wxy, mtu: v calc, 5-0%: MRLST: dk gy-blk, sb blk - blk, occ sb pily, sl frm - hd, arg-sily tex, mtu: calc, tr sec cal incl, g od, very fast bl-wht
--	---	--



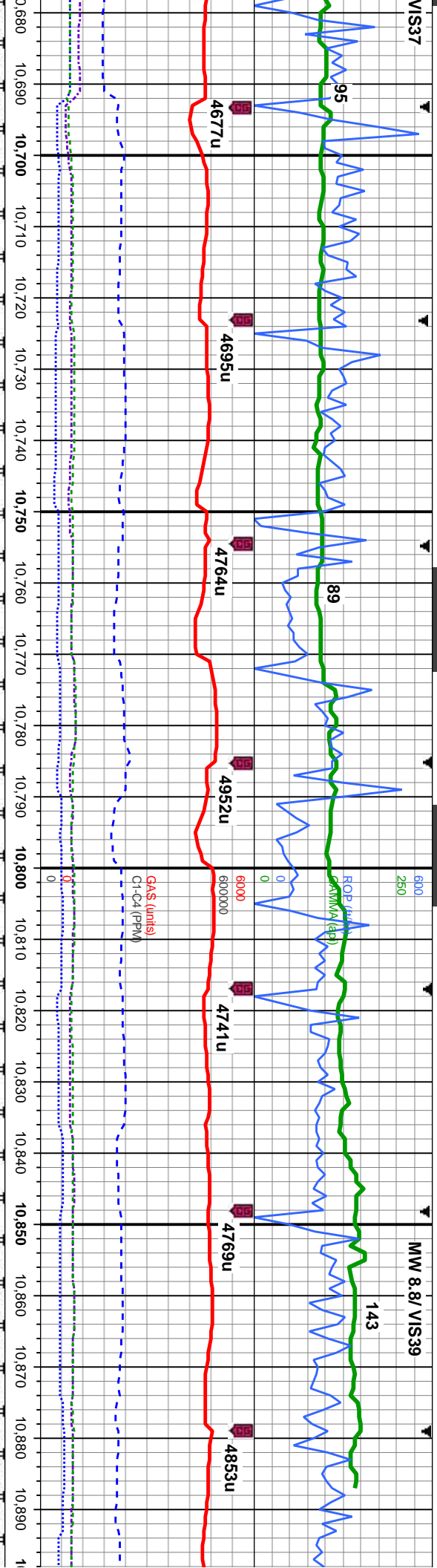


MD: 10,484 ' TVD: 6,423.79 ' Inclination: 90.7 ° Azimuth: 178 ° VS: 3,549.67 '	MD: 10,515 ' TVD: 6,423.49 ' Inclination: 90.4 ° Azimuth: 178.5 ° VS: 3,579.93 '	MD: 10,546 ' TVD: 6,423.33 ' Inclination: 90.2 ° Azimuth: 178.8 ° VS: 3,610.24 '	MD: 10,578 ' TVD: 6,423.22 ' Inclination: 90.2 ° Azimuth: 178.3 ° VS: 3,641.52 '	MD: 10,609 ' TVD: 6,422.97 ' Inclination: 90.7 ° Azimuth: 177.4 ° VS: 3,671.73 '	MD: 10,640 ' TVD: 6,422.54 ' Inclination: 90.9 ° Azimuth: 178 ° VS: 3,701.92 '	MD: 10,670 ' TVD: 6,422.1 ' Inclination: 90.8 ° Azimuth: 179.4 ° VS: 3,731.26 '
--	--	--	--	--	--	---

100-90% CHK: lt gy-med gy, wht-crm, mot, sb blk - sb pily, sft - mod hd, rthy-wxy, mt; v calc, 0-10%: MRLST: dk gy-blk, sb blk - blk, occ sb pily, sl frm - hd, arg-sily tex, mt; calc; some lse cal, occ sec cal incl, fr od, fast blshwh stmg, no flor, mod bri wh yel ring, mod sin

90% CHK: lt gy-med gy, wht-crm, mot, sb blk - sb pily, sft - mod rthy-wxy, mt; v calc, 10%: MRLST: dk gy-blk, sb blk - blk, occ frm - hd, arg-sily tex, mt; calc; some lse cal, occ sec cal incl, fr od, fast blshwh stmg, no flor, mod bri wh yel ring, mod sin





MD: 10,702 ' TVD: 6,421.65 ' Inclination: 90.8 ° Azimuth: 179.7 ° VS: 3,762.64 '	MD: 10,733 ' TVD: 6,421.24 ' Inclination: 90.7 ° Azimuth: 178.8 ° VS: 3,793.01 '	MD: 10,764 ' TVD: 6,421.11 ' Inclination: 89.8 ° Azimuth: 179.2 ° VS: 3,823.36 '	MD: 10,795 ' TVD: 6,421.33 ' Inclination: 89.4 ° Azimuth: 180.8 ° VS: 3,853.81 '	MD: 10,827 ' TVD: 6,421.52 ' Inclination: 89.9 ° Azimuth: 181 ° VS: 3,885.34 '	MD: 10,858 ' TVD: 6,421.55 ' Inclination: 90 ° Azimuth: 181 ° VS: 3,915.89 '	MD: 10,889 ' TVD: 6,421.22 ' Inclination: 91.2 ° Azimuth: 181.8 ° VS: 3,946.47 '
--	--	--	--	--	--	--

hd, sb pily, sl od, fast	95% CHK: lt gy-med gy, wht-crm, mot, sb blk - sb pily, sft - mod hd, rthy-wxy, mtx: v calc, 5%: MRLST: dk gy-blk, sb blk - blk, occ sb pily, sl frm - hd, arg-sly tex, mtx: calc, some lse cal, tr inoc fos, g od, mod-fast blshwn string, no flor, mod bri wh yel ring, mod str	95% CHK: lt gy-med gy, wht-crm, mot, sb blk - sb pily, sft - mod hd, rthy-wxy, rthy-wxy, mtx: v calc, 5%: MRLST: dk gy-blk, sb blk - blk, occ sb pily, sl frm - hd, arg-sly tex, mtx: calc, some lse cal, tr inoc fos, g od, fast blshwn string, no flor, mod bri wh yel ring, mod str
--------------------------------	---	---



