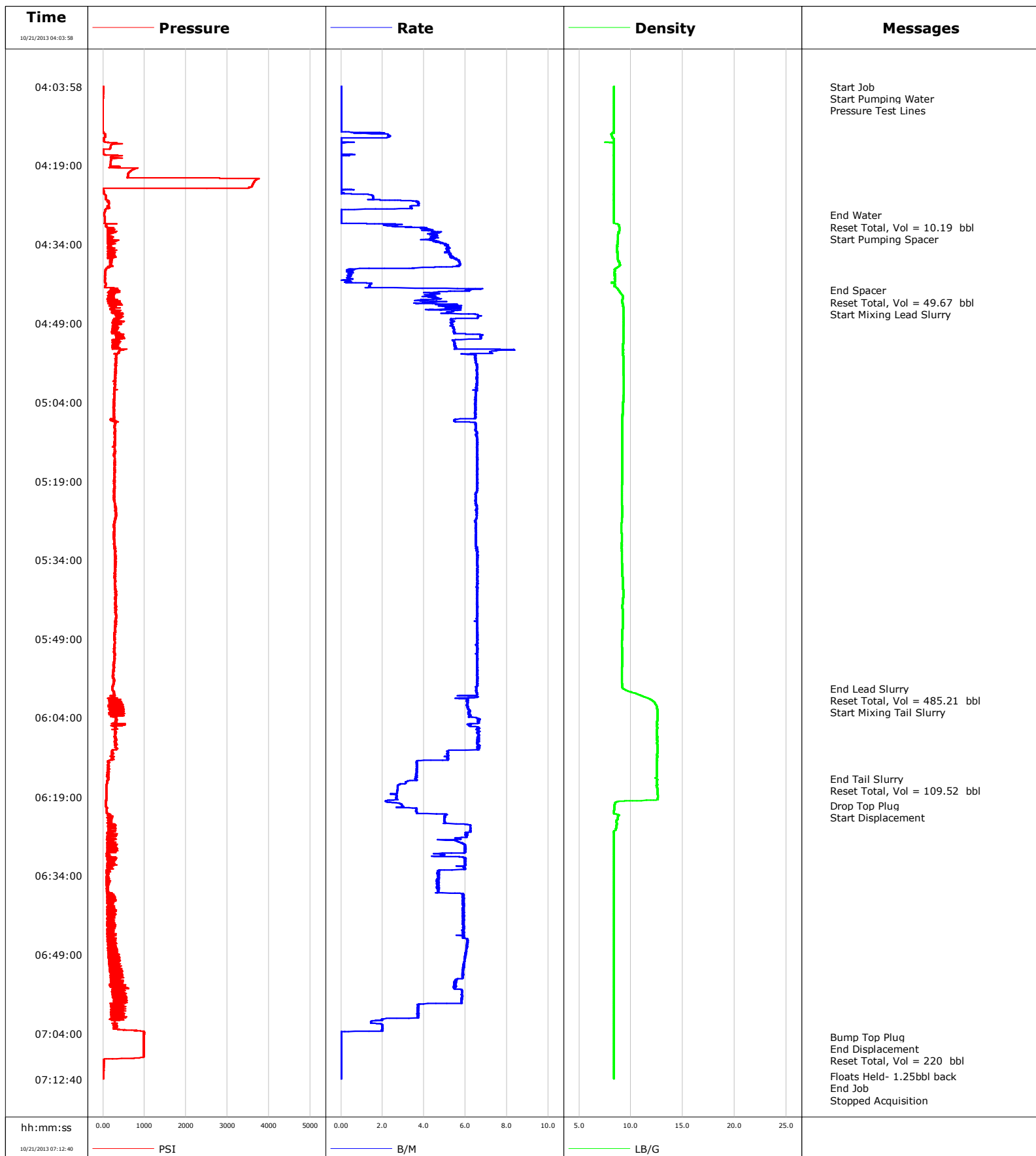


Well SGU 8516B-33
Field Story Gulch
Engineer Michael Simon/ M Reedy
Country United States

Client Encana
SIR No. COU5-00050
Job Type 9 5/8 Surface
Job Date 10-21-2013





Cementing Service Report

				Customer Encana			Job Number COU5-00050								
Well SGU 8516B-33 8516B-33			Location (legal) Grand Junction			Schlumberger Location Rock Springs			Job Start Oct/21/2013						
Field Story Gulch		Formation Name/Type Shale			Deviation		Bit Size 14.8 in		Well MD 2975.0 ft		Well TVD 2944.0 ft				
County Garfield		State/Province Colorado			BHP		BHST 120 degF		BHCT 92 degF		Pore Press. Gradient				
Well Master 0631501101		API/UWI													
Rig Name Patterson 326		Drilled For Gas		Service Via Land		Casing/Liner									
						Depth, ft		Size, in		Weight, lb/ft		Grade		Thread	
Offshore Zone		Well Class New		Well Type Development		2944.0		9.630		36.0		J55		8RD	
						0.0		0.000		0.0					
Drilling Fluid Type		Max. Density 8.90 lb/gal		Plastic Viscosity		Tubing/Drill Pipe									
						Depth,		Size,		Weight,		Grade		Thread	
Service Line Cementing		Job Type 9 5/8 Surface													
Max. Allowed Tub. Press 4000 psi		Max. Allowed Ann. Press		WH Connection Single Cement head		Perforations/Open Hole									
						Top,		Bottom,				No. of Shots		Total Interval	
Service Instructions														Diameter	
						Treat Down Casing		Displacement 220.0 bbl		Packer Type		Packer Depth			
						Tubing Vol.		Casing Vol. 227.6 bbl		Annular Vol. 375.0 bbl		Openhole Vol. 620.0 bbl			
Casing/Tubing Secured <input checked="" type="checkbox"/>		1 Hole Vol. Circulated prior to Cement <input checked="" type="checkbox"/>		Casing Tools				Squeeze Job							
Lift Pressure 1457 psi		Shoe Type Float				Squeeze Type									
Pipe Rotated <input type="checkbox"/>		Pipe Reciprocated <input type="checkbox"/>				Shoe Depth 2944.0 ft				Tool Type					
No. Centralizers 23		Top Plugs 1		Bottom Plugs		Stage Tool Type				Tool Depth					
Cement Head Type Single		Stage Tool Depth				Tail Pipe Size									
Job Scheduled For Oct/21/2013		Arrived on Location Oct/21/2013		Leave Location Oct/21/2013		Collar Type Float				Tail Pipe Depth					
						Collar Depth 2899.0 ft				Sqz. Total Vol.					
Date	Time 24-hr clock	Treating Pressure PSI	Flow Rate B/M	Density LB/G	Volume BBL	Stage BBL	Message								
10/21/2013	03:27:14						Started Acquisition								
10/21/2013	04:03:58	4	0.0	8.38	0.0	0.0									
10/21/2013	04:03:59						Start Job								
10/21/2013	04:03:59	4	0.0	8.38	0.0	0.0									
10/21/2013	04:04:01						Start Pumping Water								
10/21/2013	04:04:01	3	0.0	8.38	0.0	0.0									
10/21/2013	04:04:02						Pressure Test Lines								
10/21/2013	04:04:02	4	0.0	8.38	0.0	0.0									
10/21/2013	04:06:14	0	0.0	8.38	0.0	0.0									
10/21/2013	04:09:14	-1	0.0	8.38	0.0	0.0									
10/21/2013	04:12:14	-0	0.0	8.38	0.0	0.0									
10/21/2013	04:15:14	191	0.0	8.37	2.1	2.1									
10/21/2013	04:18:14	189	0.0	8.37	2.2	2.2									
10/21/2013	04:21:14	595	0.0	8.37	2.2	2.2									
10/21/2013	04:24:14	7	0.0	8.37	2.3	2.3									
10/21/2013	04:27:14	106	3.4	8.37	9.7	9.7									
10/21/2013	04:28:29						End Water								
10/21/2013	04:28:29	28	0.0	8.37	10.1	10.1									
10/21/2013	04:28:30						Reset Total, Vol = 10.19 bbl								
10/21/2013	04:28:30	28	0.0	8.37	10.1	10.1									
10/21/2013	04:28:34						Start Pumping Spacer								

Well			Field		Job Start	Customer	Job Number
SGU 8516B-33 8516B-33			Story Gulch		Oct/21/2013	Encana	COU5-00050
Date	Time 24-hr clock	Treating Pressure PSI	Flow Rate B/M	Density LB/G	Volume BBL	Stage BBL	Message
10/21/2013	04:30:14	80	2.6	8.78	0.3	0.3	
10/21/2013	04:33:14	372	4.4	8.74	12.4	12.4	
10/21/2013	04:36:14	132	5.3	8.69	27.5	27.5	
10/21/2013	04:39:14	60	0.3	8.43	40.6	40.6	
10/21/2013	04:42:14	45	1.3	8.59	42.7	42.7	
10/21/2013	04:42:44						End Spacer
10/21/2013	04:42:44	269	6.1	8.79	45.2	45.2	
10/21/2013	04:42:49						Reset Total, Vol = 49.67 bbl
10/21/2013	04:42:49	401	6.0	8.84	45.7	45.7	
10/21/2013	04:43:13						Start Mixing Lead Slurry
10/21/2013	04:43:13	347	4.6	8.98	2.1	2.1	
10/21/2013	04:45:14	172	3.6	9.18	10.8	10.8	
10/21/2013	04:48:14	412	5.3	9.28	27.7	27.7	
10/21/2013	04:51:14	478	6.8	9.27	44.1	44.1	
10/21/2013	04:54:14	402	7.5	9.24	62.3	62.3	
10/21/2013	04:57:14	306	6.6	9.26	82.2	82.2	
10/21/2013	05:00:14	281	6.5	9.32	101.8	101.8	
10/21/2013	05:03:14	271	6.5	9.26	121.4	121.4	
10/21/2013	05:06:14	263	6.5	9.19	140.8	140.8	
10/21/2013	05:09:14	288	6.5	9.16	159.7	159.7	
10/21/2013	05:12:14	280	6.6	9.17	179.3	179.3	
10/21/2013	05:15:14	290	6.6	9.16	199.0	199.0	
10/21/2013	05:18:14	275	6.6	9.15	218.6	218.6	
10/21/2013	05:21:14	268	6.5	9.13	238.3	238.3	
10/21/2013	05:24:14	304	6.5	9.15	257.8	257.8	
10/21/2013	05:27:14	268	6.5	9.08	277.4	277.4	
10/21/2013	05:30:14	264	6.5	9.10	296.9	296.9	
10/21/2013	05:33:14	310	6.6	9.11	316.5	316.5	
10/21/2013	05:36:14	284	6.6	9.16	336.2	336.2	
10/21/2013	05:39:14	289	6.6	9.21	355.9	355.9	
10/21/2013	05:42:14	303	6.6	9.20	375.6	375.6	
10/21/2013	05:45:14	308	6.5	9.22	395.3	395.3	
10/21/2013	05:48:14	272	6.6	9.17	415.0	415.0	
10/21/2013	05:51:14	277	6.6	9.16	434.7	434.7	
10/21/2013	05:54:14	247	6.6	9.15	454.4	454.4	
10/21/2013	05:57:14	274	6.6	9.13	474.1	474.1	
10/21/2013	05:58:24						End Lead Slurry
10/21/2013	05:58:24	229	6.5	9.22	481.7	481.7	
10/21/2013	05:58:26						Reset Total, Vol = 485.21 bbl
10/21/2013	05:58:26	226	6.5	9.22	481.9	481.9	
10/21/2013	06:00:14	342	6.2	11.58	11.6	11.6	
10/21/2013	06:02:02						Start Mixing Tail Slurry
10/21/2013	06:02:02	134	6.1	12.49	22.6	22.6	
10/21/2013	06:03:14	513	6.2	12.55	30.0	30.0	
10/21/2013	06:06:14	285	6.5	12.52	49.2	49.2	
10/21/2013	06:09:14	318	6.7	12.53	69.1	69.1	
10/21/2013	06:12:14	112	3.6	12.52	85.7	85.7	
10/21/2013	06:15:14	112	3.6	12.48	96.6	96.6	
10/21/2013	06:15:31						End Tail Slurry
10/21/2013	06:15:31	112	3.6	12.45	97.7	97.7	
10/21/2013	06:15:34						Reset Total, Vol = 109.52 bbl
10/21/2013	06:15:34	128	3.6	12.48	97.8	97.8	
10/21/2013	06:18:14	81	2.7	12.57	105.7	105.7	
10/21/2013	06:20:36						Drop Top Plug

Well			Field		Job Start	Customer		Job Number
SGU 8516B-33 8516B-33			Story Gulch		Oct/21/2013	Encana		COU5-00050
Date	Time 24-hr clock	Treating Pressure PSI	Flow Rate B/M	Density LB/G	Volume BBL	Stage BBL	Message	
10/21/2013	06:20:37						Start Displacement	
10/21/2013	06:20:37	67	2.9	8.42	111.9	111.9		
10/21/2013	06:21:14	98	3.6	8.39	113.8	113.8		
10/21/2013	06:24:14	156	5.9	8.62	127.5	127.5		
10/21/2013	06:27:14	112	4.7	8.37	16.1	16.1		
10/21/2013	06:30:14	88	4.9	8.36	33.3	33.3		
10/21/2013	06:33:14	95	4.7	8.37	50.5	50.5		
10/21/2013	06:36:14	116	4.7	8.37	64.5	64.5		
10/21/2013	06:39:14	117	5.9	8.37	80.9	80.9		
10/21/2013	06:42:14	104	5.9	8.37	98.6	98.6		
10/21/2013	06:45:14	106	5.9	8.37	116.3	116.3		
10/21/2013	06:48:14	218	6.0	8.37	134.4	134.4		
10/21/2013	06:51:14	183	5.9	8.37	152.3	152.3		
10/21/2013	06:54:14	195	5.5	8.37	169.8	169.8		
10/21/2013	06:57:14	359	5.8	8.37	186.8	186.8		
10/21/2013	07:00:14	318	3.7	8.37	200.3	200.3		
10/21/2013	07:03:14	387	2.0	8.37	207.5	207.5		
10/21/2013	07:04:35						Bump Top Plug	
10/21/2013	07:04:35	987	0.0	8.37	208.3	208.3		
10/21/2013	07:04:36						End Displacement	
10/21/2013	07:04:36	987	0.0	8.37	208.3	208.3		
10/21/2013	07:06:14	986	0.0	8.37	208.3	208.3		
10/21/2013	07:06:52						Reset Total, Vol = 220 bbl	
10/21/2013	07:06:52	986	0.0	8.37	208.3	208.3		
10/21/2013	07:09:14	13	0.0	8.37	0.0	0.0		
10/21/2013	07:12:10						Floats Held- 1.25bbl back	
10/21/2013	07:12:10	11	0.0	8.37	0.0	0.0		
10/21/2013	07:12:14	11	0.0	8.37	0.0	0.0		
10/21/2013	07:12:31						End Job	
10/21/2013	07:12:31	11	0.0	8.37	0.0	0.0		
10/21/2013	07:12:40	11	0.0	8.37	0.0	0.0		

Post Job Summary

Average Pump Rates, bbl/min					Volume of Fluid Injected, bbl				
Slurry 5.5	N2	Mud 0.0	Maximum Rate 8.4		Total Slurry 594.0	Mud 0.0	Spacer 49.6	N2	
Treating Pressure Summary, psi					Breakdown Fluid				
Maximum 3767	Final 11	Average 285	Bump Plug to 700	Breakdown	Type		Volume		Density
Avg. N2 Percent		Designed Slurry Volume 562.0 bbl		Displacement 220.0 bbl		Mix Water Temp 60 degF		Cement Circulated to Surface? <input checked="" type="checkbox"/>	
								Volume 250.0 bbl	
								Washed Thru Perfs <input type="checkbox"/>	
								To	
Customer or Authorized Representative				Schlumberger Supervisor				Circulation Lost <input type="checkbox"/>	
Robert Escojeda				Michael Simon/ M Reedy				Job Completed <input checked="" type="checkbox"/>	
								-	