

The Road to Excellence Starts with Safety

Sold To #: 345242	Ship To #: 3004153	Quote #:	Sales Order #: 900516523
Customer: NOBLE ENERGY INC E-BUSINESS		Customer Rep: Beam, Ryan	
Well Name: Thomson		Well #: B 12-12	API/UWI #: 05-123-19265
Field: Wattenberg	City (SAP): GREELEY	County/Parish: Weld	State: Colorado
Lat: N 40.412 deg. OR N 40 deg. 24 min. 44.982 secs.		Long: W 104.506 deg. OR W -105 deg. 29 min. 39.732 secs.	
Contractor: Workover		Rig/Platform Name/Num: Workover	
Job Purpose: Recement Service			
Well Type: Development Well		Job Type: Recement Service	
Sales Person: PLIENESS, RYAN		Srv Supervisor: NIELSON, BRANDON	MBU ID Emp #: 479703

Job Personnel

HES Emp Name	Exp Hrs	Emp #	HES Emp Name	Exp Hrs	Emp #	HES Emp Name	Exp Hrs	Emp #
BANUELOS, GUADALUPE	5.5	372277	BARNES, BRIAN L	5.5	485204	MAYFIELD, BYRON L	5.5	528751
NIELSON, BRANDON K	5.5	479703						

Equipment

HES Unit #	Distance-1 way	HES Unit #	Distance-1 way	HES Unit #	Distance-1 way	HES Unit #	Distance-1 way
11398319	44 mile	11410470C	44 mile	11764739	44 mile	11808819C	44 mile
11923776C	44 mile	12010172	44 mile				

Job Hours

Date	On Location Hours	Operating Hours	Date	On Location Hours	Operating Hours	Date	On Location Hours	Operating Hours
TOTAL	Total is the sum of each column separately							

Job

Formation Name	Formation Depth (MD)	Top	Bottom	Form Type	Job depth MD	Job Depth TVD	Water Depth	Perforation Depth (MD)	From	To
				BHST	2000. ft	2000. ft				
							Wk Ht Above Floor			
						4. ft				

Job Times

Date	Time	Time Zone
14 - Jun - 2013	04:00	MST
14 - Jun - 2013	08:30	MST
14 - Jun - 2013	12:21	MST
14 - Jun - 2013	13:35	MST
14 - Jun - 2013	14:00	MST

Well Data

Description	New / Used	Max pressure psig	Size in	ID in	Weight lbm/ft	Thread	Grade	Top MD ft	Bottom MD ft	Top TVD ft	Bottom TVD ft
10." Open Hole				12.					2000.		
Surface Casing	Used		8.625	8.097	24.		J-55		368.		368.
1 1/4"	Unknown		1.25				K-55		2000.		

Tools and Accessories

Type	Size	Qty	Make	Depth	Type	Size	Qty	Make	Depth	Type	Size	Qty	Make
Guide Shoe					Packer					Top Plug			
Float Shoe					Bridge Plug					Bottom Plug			
Float Collar					Retainer					SSR plug set			
Insert Float										Plug Container			
Stage Tool										Centralizers			

Miscellaneous Materials

Gelling Agt	Conc	Surfactant	Conc	Acid Type	Qty	Conc	%
Treatment Fld	Conc	Inhibitor	Conc	Sand Type	Size		

Fluid Data

Stage/Plug #: 1

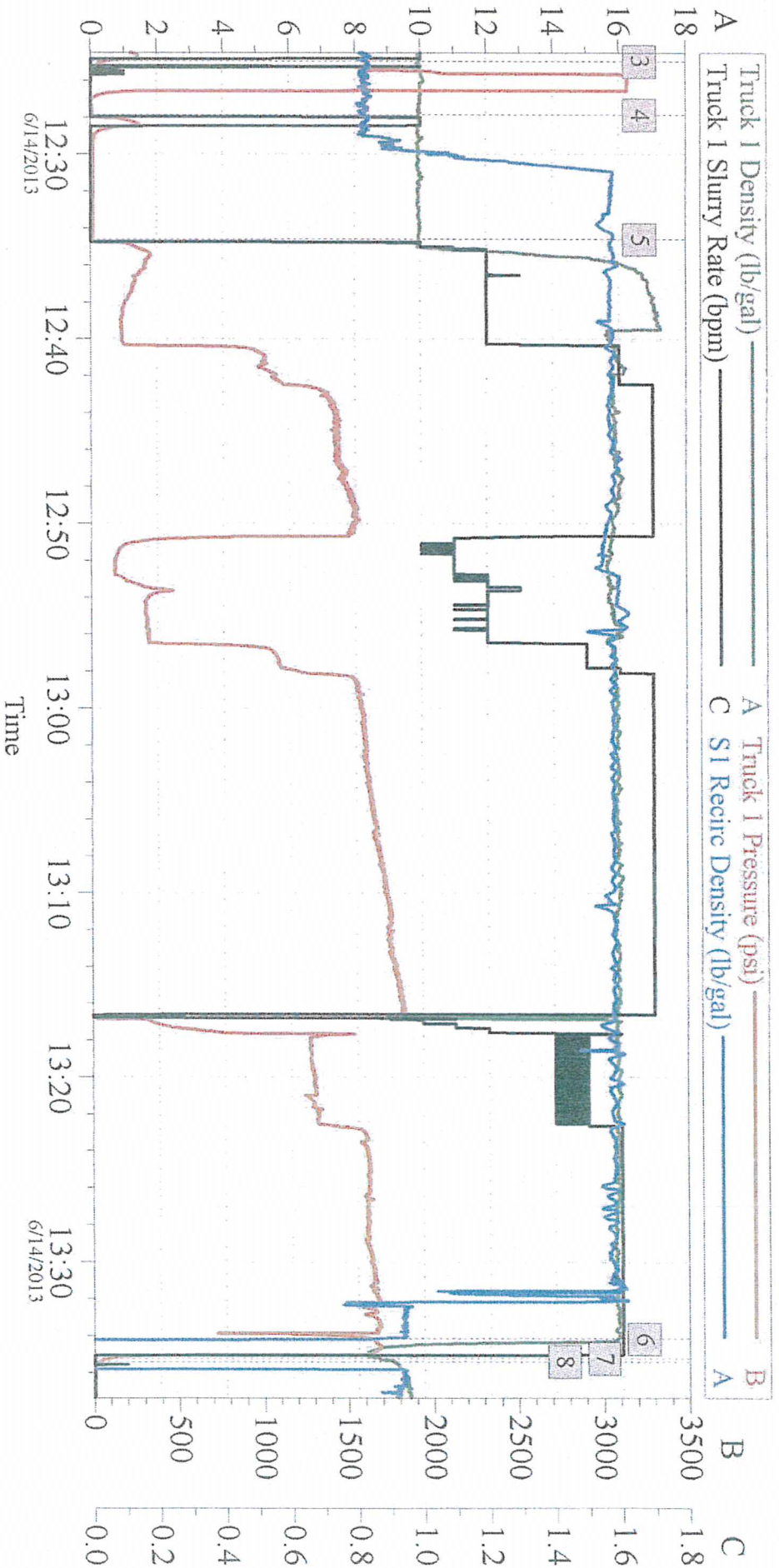
Fluid #	Stage Type	Fluid Name	Qty	Qty uom	Mixing Density lbm/gal	Yield ft ³ /sk	Mix Fluid Gal/sk	Rate bbl/min	Total Mix Fluid Gal/sk
1	15.8# Cement	HALCEM (TM) SYSTEM (452986)	450.0	sacks	15.8	1.15	5.0		5.0
	5 Gal	FRESH WATER							
Calculated Values		Pressures		Volumes					
Displacement		Shut In: Instant		Lost Returns	0	Cement Slurry		Pad	
Top Of Cement		5 Min		Cement Returns	0	Actual Displacement		Treatment	
Frac Gradient		15 Min		Spacers	0	Load and Breakdown		Total Job	
Rates									
Circulating		Mixing		Displacement		Avg. Job			
Cement Left In Pipe	Amount	0 ft	Reason	Shoe Joint					
Frac Ring # 1 @	ID	Frac ring # 2 @	ID	Frac Ring # 3 @	ID	Frac Ring # 4 @	ID		
The Information Stated Herein Is Correct				Customer Representative Signature					

The Road to Excellence Starts with Safety

Sold To #: 345242	Ship To #: 3004153	Quote #:	Sales Order #: 900516523
Customer: NOBLE ENERGY INC E-BUSINESS	Customer Rep: Beam, Ryan		
Well Name: Thomson	Well #: B 12-12	API/UWI #: 05-123-19265	
Field: Wattenberg	City (SAP): GREELEY	County/Parish: Weld	State: Colorado
Legal Description:			
Lat: N 40.412 deg. OR N 40 deg. 24 min. 44.982 secs.		Long: W 104.506 deg. OR W -105 deg. 29 min. 39.732 secs.	
Contractor: Workover	Rig/Platform Name/Num: Workover		
Job Purpose: Recement Service	Ticket Amount:		
Well Type: Development Well	Job Type: Recement Service		
Sales Person: PLIENESS, RYAN	Srv Supervisor: NIELSON, BRANDON	MBU ID Emp #: 479703	

Activity Description	Date/Time	Cht #	Rate bbl/min	Volume bbl		Pressure psig		Comments
				Stage	Total	Tubing	Casing	
Other	06/14/2013 10:41							During rig up the water hauler told me he had 100 bbl of water with 1 pound of biocide in it. Crew was instructed not to touch the wter until phone calls wer made. the decicion was made to get 100 bbl of fresh water on location.
Test Lines	06/14/2013 12:24							TESTED LINES TO 3000
Pump Spacer 1	06/14/2013 12:27		1	2		280.0		FRESH WATER TO LOAD THE HOLE AND BREAK CIRCULATION
Pump Cement	06/14/2013 12:34		1.75	92.1		1801.0		450 SKS NEAT MIXED @ 15.8 PPG WITH FRESH WATER
Pump Displacement	06/14/2013 13:34							FRESH WATER TO CLEAR PUMPS AND LINES
End Job	06/14/2013 13:35							
Shutdown	06/14/2013 13:35							

NOBLE THOMSON B12-12 RECEMENT



Global Event Log

Intersection	TIP	Intersection	TIP	Intersection	TIP
1 Starting Job	09:38:09 0.000	2 Start Job	12:21:19 -3.000	3 Test Lines	12:24:57 88.33
4 Pump Spacer 1	12:27:51 6.000	5 Pump Cement	12:34:38 12.00	6 Pump Displacement	13:34:10 1636
7 Shutdown	13:35:13 90.62	8 End Job	13:35:24 27.99	9 Ending Job	13:38:14 -11.00

Customer:

Well Description:

Job Date: 14-Jun-2013

UWI:

Sales Order #: 900516523

OptiCem v6.4.10
14-Jun-13 13:41