

The Road to Excellence Starts with Safety

Sold To #: 345242	Ship To #: 3004027	Quote #:	Sales Order #: 900513576
Customer: NOBLE ENERGY INC E-BUSINESS		Customer Rep: Burns, Pete	
Well Name: Gemini K	Well #: 1-11	API/UWI #: 05-123-15177	
Field: Wattenberg	City (SAP): EVANS	County/Parish: Weld	State: Colorado
Contractor: Workover		Rig/Platform Name/Num: Workover	
Job Purpose: Recement Service			
Well Type: Development Well		Job Type: Recement Service	
Sales Person: PLIENESS, RYAN	Srvc Supervisor: BIRCHELL, DEVIN	MBU ID Emp #: 466993	

Job Personnel

HES Emp Name	Exp Hrs	Emp #	HES Emp Name	Exp Hrs	Emp #	HES Emp Name	Exp Hrs	Emp #
BIRCHELL, DEVIN Ray	4	466993	REYNOLDS, SCOTT Arthur	4	522540	WILEY, JAMES A	4	440080

Equipment

HES Unit #	Distance-1 way	HES Unit #	Distance-1 way	HES Unit #	Distance-1 way	HES Unit #	Distance-1 way
10972458	30 mile	11019275C	30 mile	11410470R P	30 mile	12010171	30 mile

Job Hours

Date	On Location Hours	Operating Hours	Date	On Location Hours	Operating Hours	Date	On Location Hours	Operating Hours
06-13-13	4	2						

TOTAL Total is the sum of each column separately

Job

Formation Name	Formation Depth (MD)	Top	Bottom	Called Out	Date	Time	Time Zone
Form Type			BHST	On Location	13 - Jun - 2013	09:30	MST
Job depth MD	486. ft		Job Depth TVD	Job Started	13 - Jun - 2013	10:43	MST
Water Depth			Wk Ht Above Floor	Job Completed	13 - Jun - 2013	11:44	MST
Perforation Depth (MD)	From		To	Departed Loc	13 - Jun - 2013	12:30	MST

Well Data

Description	New / Used	Max pressure psig	Size in	ID in	Weight lbm/ft	Thread	Grade	Top MD ft	Bottom MD ft	Top TVD ft	Bottom TVD ft
12." Open Hole				12.				319.	500.		
Surface Casing	Used		8.625	8.097	24.		J-55	.	319.	.	319.
1 1/4"	Unknown		1.25	.			K-55	.	486.		

Tools and Accessories

Type	Size	Qty	Make	Depth	Type	Size	Qty	Make	Depth	Type	Size	Qty	Make
Guide Shoe					Packer					Top Plug			
Float Shoe					Bridge Plug					Bottom Plug			
Float Collar					Retainer					SSR plug set			
Insert Float										Plug Container			
Stage Tool										Centralizers			

Miscellaneous Materials

Gelling Agt		Conc		Surfactant		Conc		Acid Type		Qty		Conc	%
Treatment Fld		Conc		Inhibitor		Conc		Sand Type		Size		Qty	

Fluid Data

Stage/Plug #: 1	Fluid #	Stage Type	Fluid Name	Qty	Qty uom	Mixing Density lbm/gal	Yield ft/sk	Mix Fluid Gal/sk	Rate bbl/min	Total Mix Fluid Gal/sk
-----------------	---------	------------	------------	-----	---------	------------------------	-------------	------------------	--------------	------------------------

Stage/Plug #: 1

Stage/Plug #: 1									
Fluid #	Stage Type	Fluid Name	Qty	Qty uom	Mixing Density lbm/gal	Yield ft ³ /sk	Mix Fluid Gal/sk	Rate bbl/min	Total Mix Fluid Gal/sk
1	Visious Spacer		5.00	bbl	.	.0	.0	.0	
2	15.8# Cement	HALCEM (TM) SYSTEM (452986)	300.0	sacks	15.8	1.15	5.0		5.0
5 Gal		FRESH WATER							
Calculated Values		Pressures		Volumes					
Displacement	1.5	Shut In: Instant		Lost Returns		Cement Slurry		Pad	
Top Of Cement	Surface	5 Min		Cement Returns	1	Actual Displacement	1.5	Treatment	
Frac Gradient		15 Min		Spacers	8.5	Load and Breakdown		Total Job	
Rates									
Circulating		Mixing	2	Displacement	1	Avg. Job			1.5
Cement Left In Pipe	Amount	0 ft	Reason	Shoe Joint					
Frac Ring # 1 @	ID	Frac ring # 2 @	ID	Frac Ring # 3 @	ID	Frac Ring # 4 @	ID		
The Information Stated Herein Is Correct				Customer Representative Signature					

The Road to Excellence Starts with Safety

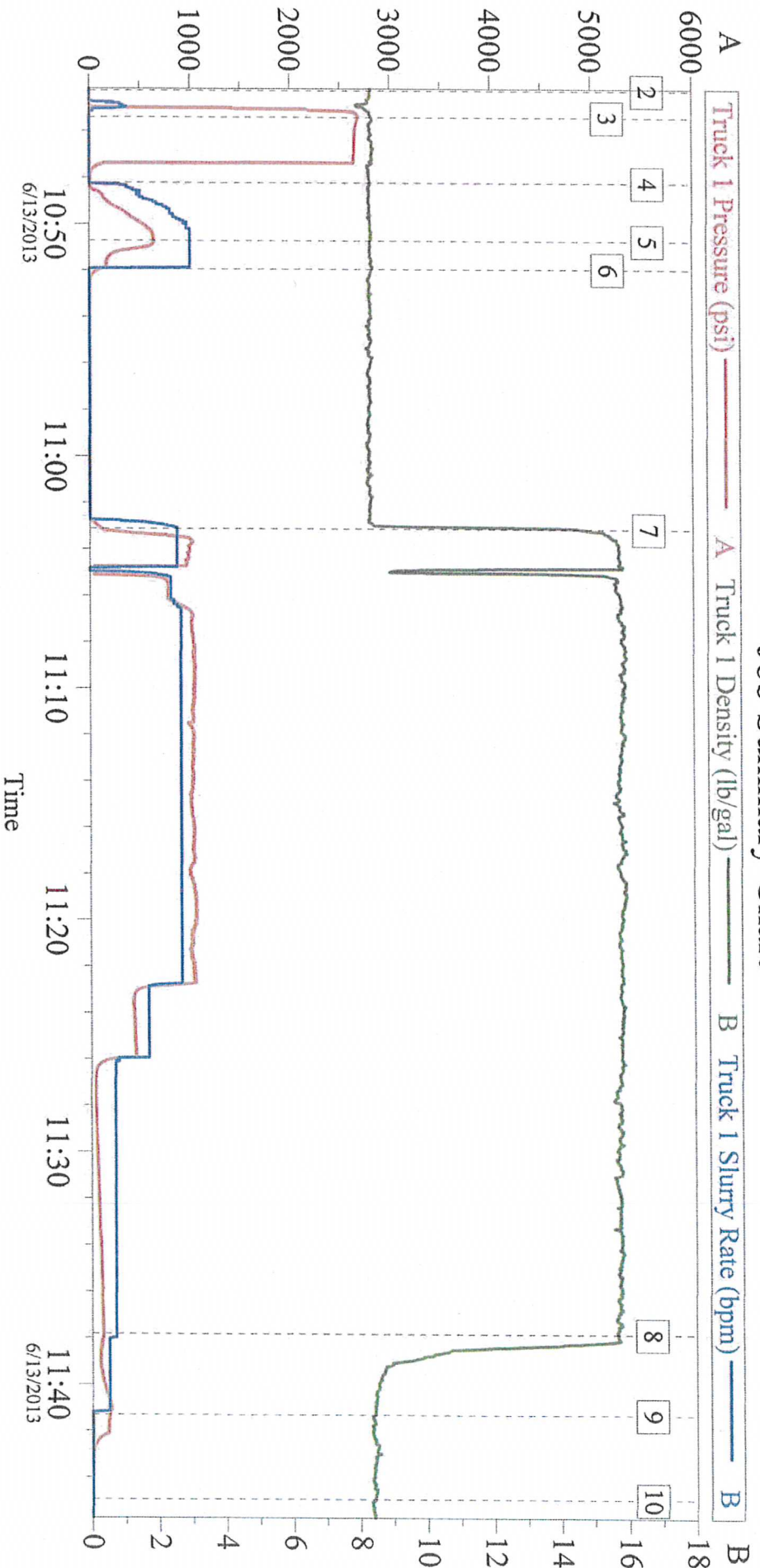
Sold To #: 345242		Ship To #: 3004027		Quote #:		Sales Order #: 900513576	
Customer: NOBLE ENERGY INC E-BUSINESS				Customer Rep: Burns, Pete			
Well Name: Gemini K			Well #: 1-11		API/UWI #: 05-123-15177		
Field: Wattenberg		City (SAP): EVANS		County/Parish: Weld		State: Colorado	
Legal Description:							
Lat: N 0 deg. OR N 0 deg. 0 min. 0 secs.				Long: E 0 deg. OR E 0 deg. 0 min. 0 secs.			
Contractor: Workover			Rig/Platform Name/Num: Workover				
Job Purpose: Recement Service					Ticket Amount:		
Well Type: Development Well			Job Type: Recement Service				
Sales Person: PLIENESS, RYAN			Srvc Supervisor: BIRCHELL, DEVIN			MBU ID Emp #: 466993	

Activity Description	Date/Time	Cht #	Rate bbl/ min	Volume bbl		Pressure psig		Comments
				Stage	Total	Tubing	Casing	
Call Out	06/13/2013 05:00							Called Out Cement Crew For Noble Energy Gemini K 1-11 Recement
Pre-Convoy Safety Meeting	06/13/2013 07:50							Discussed Hazards On Route To Location, Weather, Other Traffic, Route
Depart from Service Center or Other Site	06/13/2013 08:00							
Arrive At Loc	06/13/2013 09:30							Arrived To Location Talked With Company Rep On Volumes, Rates, Depths
Pre-Rig Up Safety Meeting	06/13/2013 09:40							Discussed Hazards With Cement Crew For Rigging Up Iron and Water Hoses
Rig-Up Equipment	06/13/2013 09:50							
Prime Pumps	06/13/2013 10:10							Primed Pumps and Lines For Pressure Test
Pre-Job Safety Meeting	06/13/2013 10:20							Discussed Job Procedures With Cement and Rig Crews
Rig-Up Completed	06/13/2013 10:35							Finished Rigging Up To The Floor And Well Head (Rig Crew Pulled 1 Joint Of 1.25 Tubing First)
Pressure Test	06/13/2013 10:43						2685.0	Test Pump and Lines to 2685 psi
Pump Spacer	06/13/2013 10:48		2.5	5	5		260.0	Pumped 5 bbls Fresh Water Spacer
Pump Spacer 1	06/13/2013 10:50		2.5	3.5	8.5		641.0	Pumped 3.5 bbls JSG18 Gel Spacer

Cementing Job Log

Activity Description	Date/Time	Cht #	Rate bbl/min	Volume bbl		Pressure psig		Comments
				Stage	Total	Tubing	Casing	
Pump Lead Cement	06/13/2013 11:00		2.5	61	69.5		948.0	Pumped 61 bbls (300sks) 15.8 ppg Lead, Yield 1.15 ft3/sk Water 5 gal/sk
Spacer Returns to Surface	06/13/2013 11:34							3.5 bbls JGS18 Gel Spacer Returns To Surface
Cement Returns to Surface	06/13/2013 11:35							1 bbls Cement Returns To Surface
Pump Displacement	06/13/2013 11:37		1	1.5	80		109.0	Pumped Fresh Water Displacement
Job Complete	06/13/2013 11:44							
Clean Lines	06/13/2013 11:47							Cleaned Pump And Lines To Haul Off Pit
Post-Job Safety Meeting (Pre Rig-Down)	06/13/2013 12:00							Discussed Hazards With Crew For Rigging Down Iron and Water Hoses
Rig-Down Equipment	06/13/2013 12:05							
Rig-Down Completed	06/13/2013 12:30							
Pre-Convoy Safety Meeting	06/13/2013 12:35							Discussed Hazards On Route To Service Center, Weather, Other Traffic, Route
Depart Location for Service Center or Other Site	06/13/2013 12:40							Thank You For Using Halliburton Energy Services

Noble Energy Gemini K 1-11 Recement Job Summary Chart



Global Event Log

Intersection	psi	Intersection	psi	Intersection	psi
2 Start Job	10:44:15 0.000	3 Test Lines	10:45:25 2685	4 Pump Spacer 1	10:48:13 4.000
5 Pump Spacer 2	10:50:43 641.4	6 Shutdown	10:51:56 115.7	7 Pump Cement	11:03:08 111.4
8 Pump Displacement	11:37:50 109.0	9 Shutdown	11:41:18 169.0	10 End Job	11:44:56 1.000

Customer: Noble Energy
Job Description: Recement
Service Supervisor: Devin Birchell

Job Date: 13-Jun-2013
UWI: 05-123-15177
Service Operator: James Wiley

Sales Order #: 900513576
Red Tiger# 11812069
Service Leader: None