



410 17th Street, Suite 1500
Denver, CO 80202
(720) 440-6100 phone
(720) 305-0804 fax

Bonanzacrk.com

January 27, 2014

Colorado Oil and Gas Conservation Commission
The Chancery Building
1120 Lincoln Street, Suite 801
Denver, CO 80203

Attn: Matthew Lepore, Director

Re: Notice of 318A(I).a(4).D Well Proposal
State Whitetail O-K-36HNB
SHL: SWSE (200' FSL and 2546' FEL) Sec 36-6N-62W, 6TH PM
Top of Production: (631' FSL and 2602' FEL) Sec 36-6N-62W, 6TH PM
Bottom of Production: (470' FNL and 2655' FEL) Sec 36-6N-62W, 6TH PM
Weld County, Colorado

Director Lepore:

Bonanza Creek Energy, Inc. (Bonanza) intends to permit, drill and operate the referenced Niobrara Horizontal Well. As defined by Colorado Oil and Gas Conservation Commission (COGCC) Rule 318A(I).a.(4)D., Bonanza proposes the following wellbore spacing unit:

W/2E/2 and E/2W/2 sec 36 T6N-R62W, 6TH PM, Weld County, CO – containing 320 acres more or less.

Bonanza is the sole mineral lease holder in the proposed spacing unit, and no mineral owner notifications were required.

Bonanza respectfully requests that you review the enclosed wellbore spacing unit documentation and approve the referenced APD.

Please do not hesitate to call or email me at (720) 440-6136 or REdelen@Bonanzacrk.com, should you have any questions pertaining to this matter.

Thank you for your cooperation.

Sincerely,

A handwritten signature in blue ink that reads 'Randy Edelen'.

Randy Edelen, P. E.
Regulatory Specialist
BONANZA CREEK ENERGY, INC.
BONANZA CREEK ENERGY OPERATING COMPANY, LLC

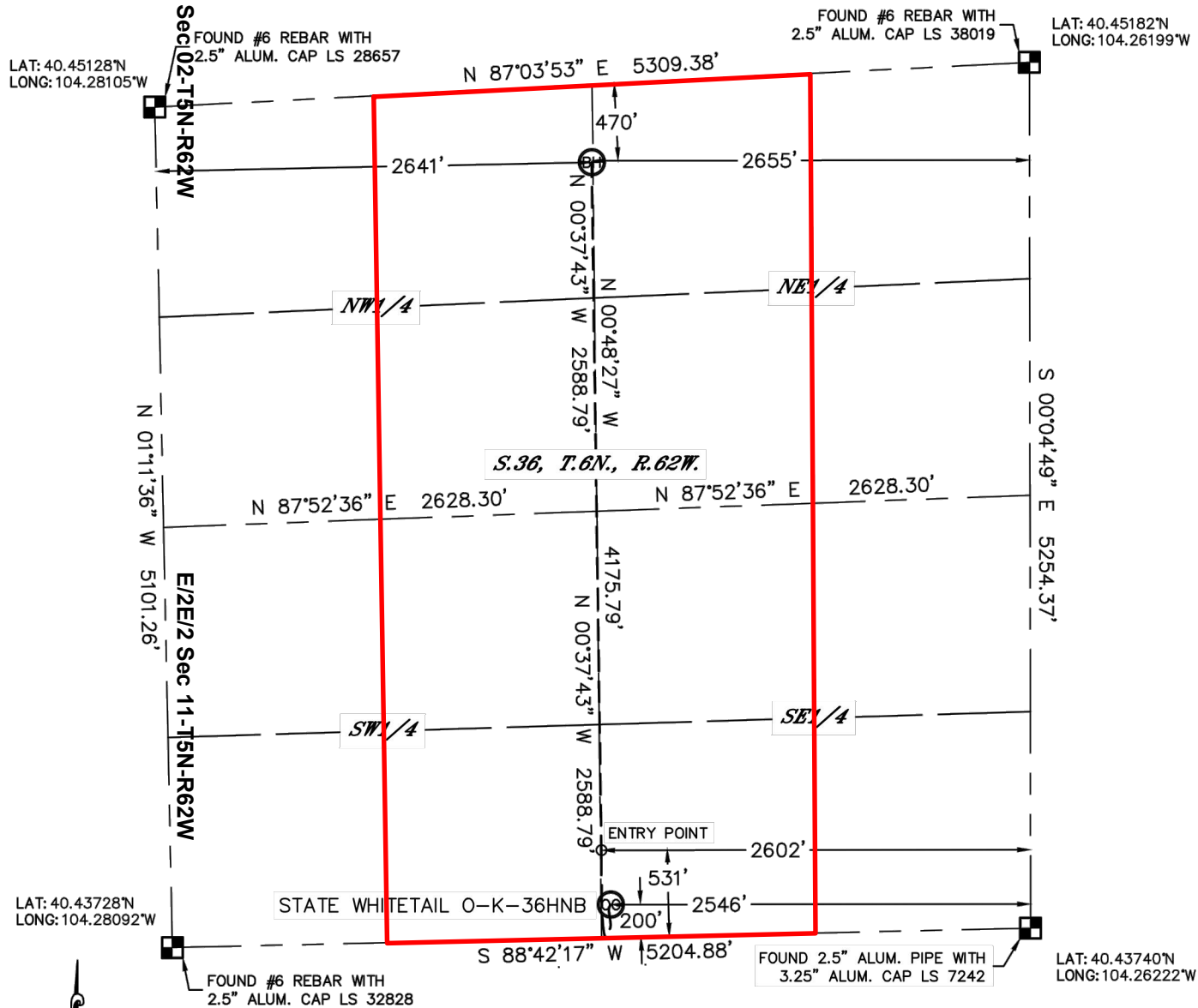


Lat40°, Inc. 1635 Foxtrail Drive, Suite 325 Loveland, CO 970-776-3321

WELL LOCATION CERTIFICATE

THIS MAP DOES NOT REPRESENT A BOUNDARY SURVEY

SECTION: 36
TOWNSHIP: 6N
RANGE: 62W



In accordance with a request from Keith Caplan with BONANZA CREEK ENERGY, INC. Lat40°, Inc. has determined the surface location of the STATE WHITETAIL O-K-36HNB to be 200' from the SOUTH line and 2546' from the EAST line and the bottom hole to be 470' from the NORTH line and 2655'



**BONANZA
CREEK**



Wellbore Spacing Unit Outline



Wellbore Spacing Unit Map

25 November 2013 ksc

State Whitetail O-K-36HNB
W/2E/2 & E/2W/2 Sec 36-T6N-R62W 6th PM
Weld County, Colorado