



**Cement Bond/  
Variable Density Log  
Gamma Ray/CCL**

Company		Tekton Windsor LLC	
Well		Pavistma South #3	
Field		Wattenberg	
County		Weld	
State		Colorado	
Location:		API # : 05-123-36650	
SEC 32 TWP 6N RGE 67W		NONE	
Permanent Datum		Ground Level	
Log Measured From		Elevation	
Drilling Measured From		4954'	
K.B. 4976'		Elevation	
D.F. 4975'		NONE	
G.L. 4954'			
Date		October 25, 2013	
Run Number		1	
Depth Driller		12,018'	
Depth Logger		7452'	
Bottom Logged Interval		7438'	
Top Log Interval		5234'	
Open Hole Size		8.75	
Type Fluid		Water	
Density / Viscosity		8.34	
Max. Recorded Temp.		-	
Estimated Cement Top		5532'	
Time Well Ready		15.05	
Time Logger on Bottom		15.40	
Equipment Number		13033	
Location		Brighton	
Recorded By		C. Rall	
Witnessed By		Rick Ohlmeier	
Run Number		Bit	
From		To	
Size		Weight	
From		To	
Casing Record		Size	
Surface String		9 5/8	
Prot. String		7	
Production String		4 1/2	
Liner		7 651'	

<<< Fold Here >>>

All interpretations are opinions based on inferences from electrical or other measurements and we cannot and do not guarantee the accuracy or correctness of any interpretation, and we shall not, except in the case of gross or willful negligence on our part, be liable or responsible for any loss, costs, damages, or expenses incurred or sustained by anyone resulting from any interpretation made by any of our officers, agents or employees. These interpretations are also subject to our general terms and conditions set out in our current Price Schedule.

Comments

Main & Repeat Pass Zero Pressure on Surface

Estimated Top of Cement 5532'

Short Joint 6298' to 6318'

Liner Top @ 7423'

Thank you for using Allied Wireline  
(303) 659-4609



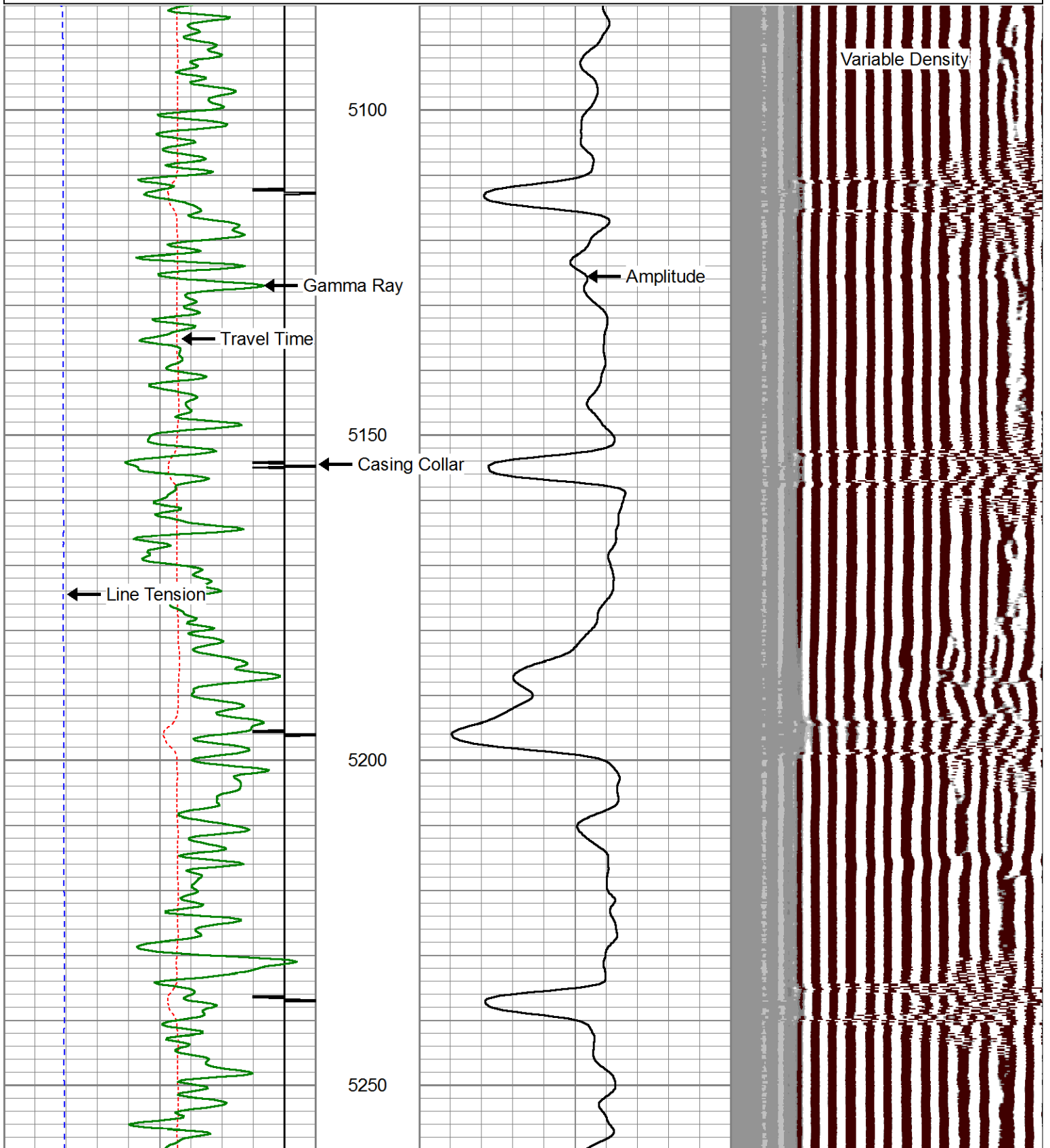
Main Pass ( 0 PSI )

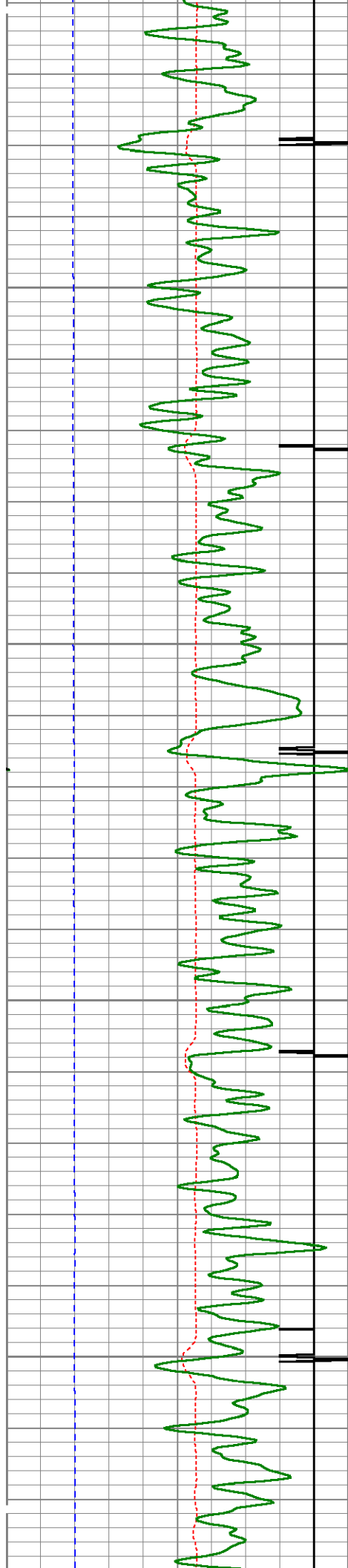
Database File: c:\warrior\data\cased hole\tekton\pavistma south #3\_cbl\tekton pavistma south #3\_cbl.db  
Dataset Pathname: pass9.2  
Presentation Format: cblprobe  
Dataset Creation: Fri Oct 25 18:05:43 2013 by Calc 0  
Charted by: Depth in Feet scaled 1:240

400	Travel Time (usec)	200
9	Casing Collar	-1
0	Gamma Ray (GAPI)	150
0	Line Tension (lb)	5000

0	Amplitude (mV)	100
0	Amplified Amplitude (mV)	10

200 Variable Density 1200



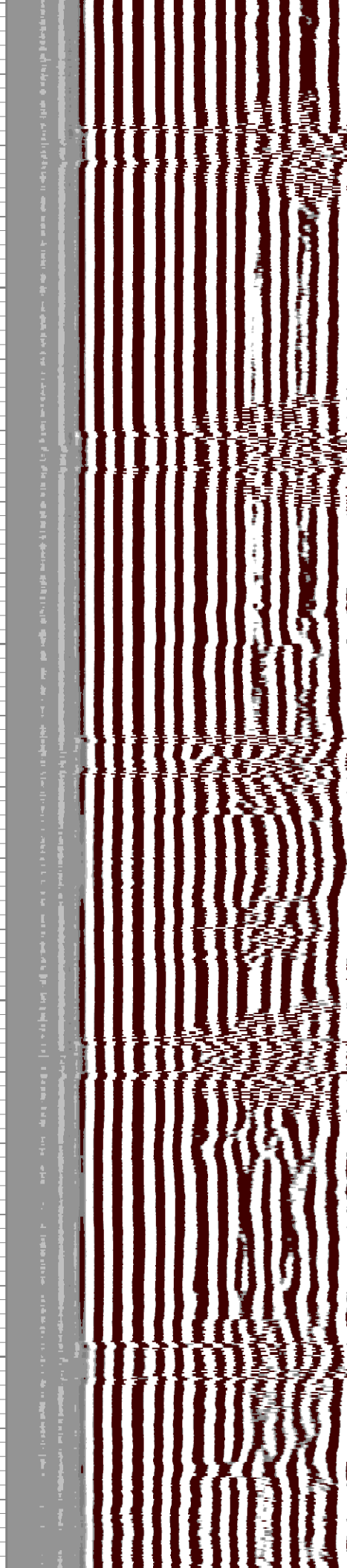
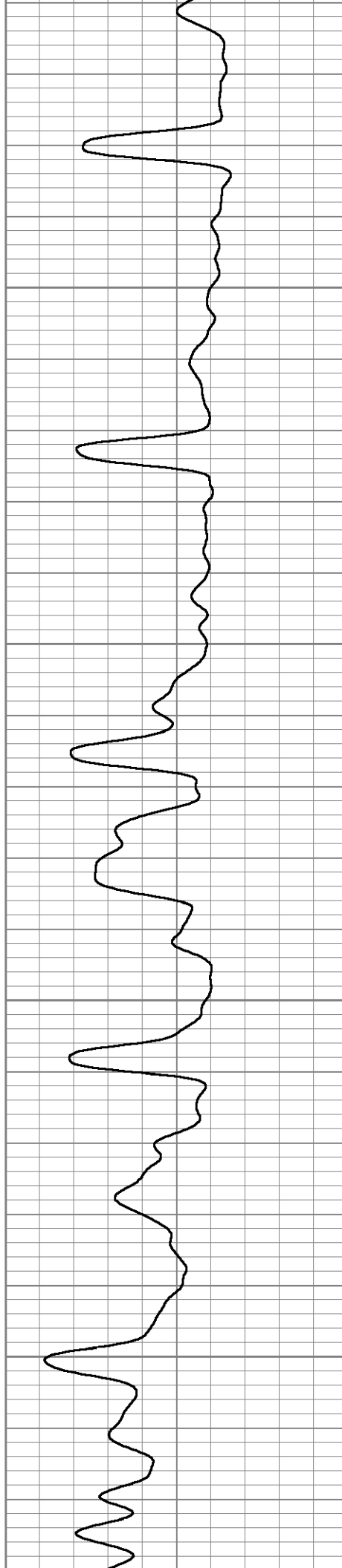


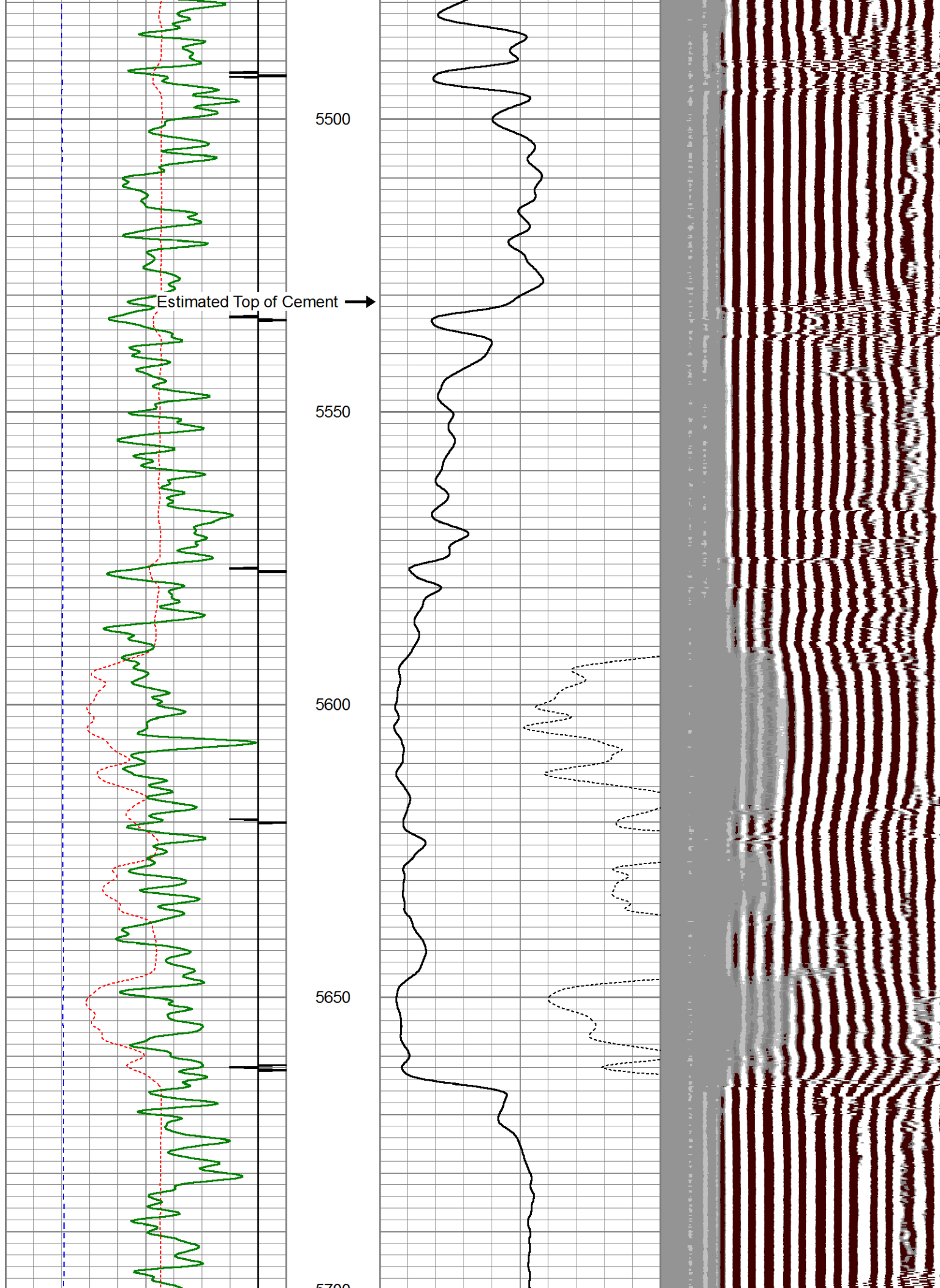
5300

5350

5400

5450





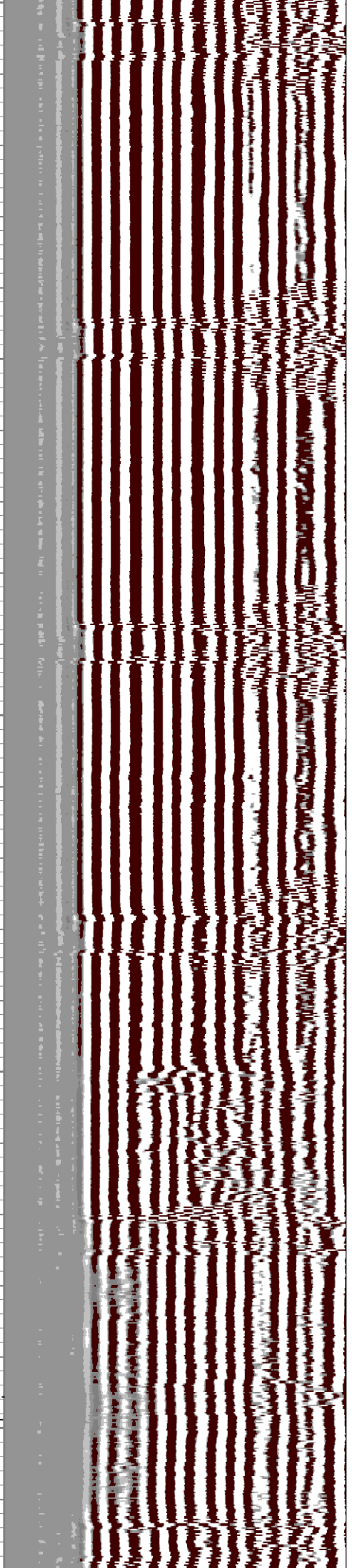
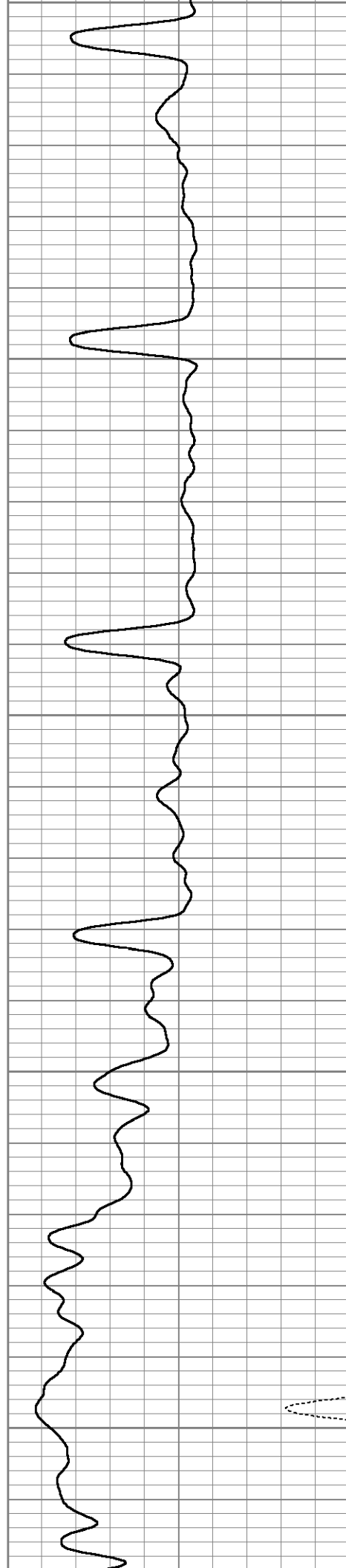
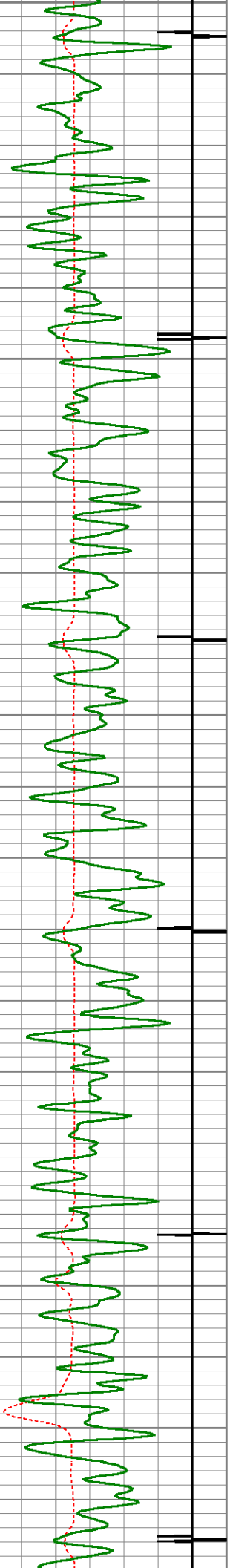
5700

5750

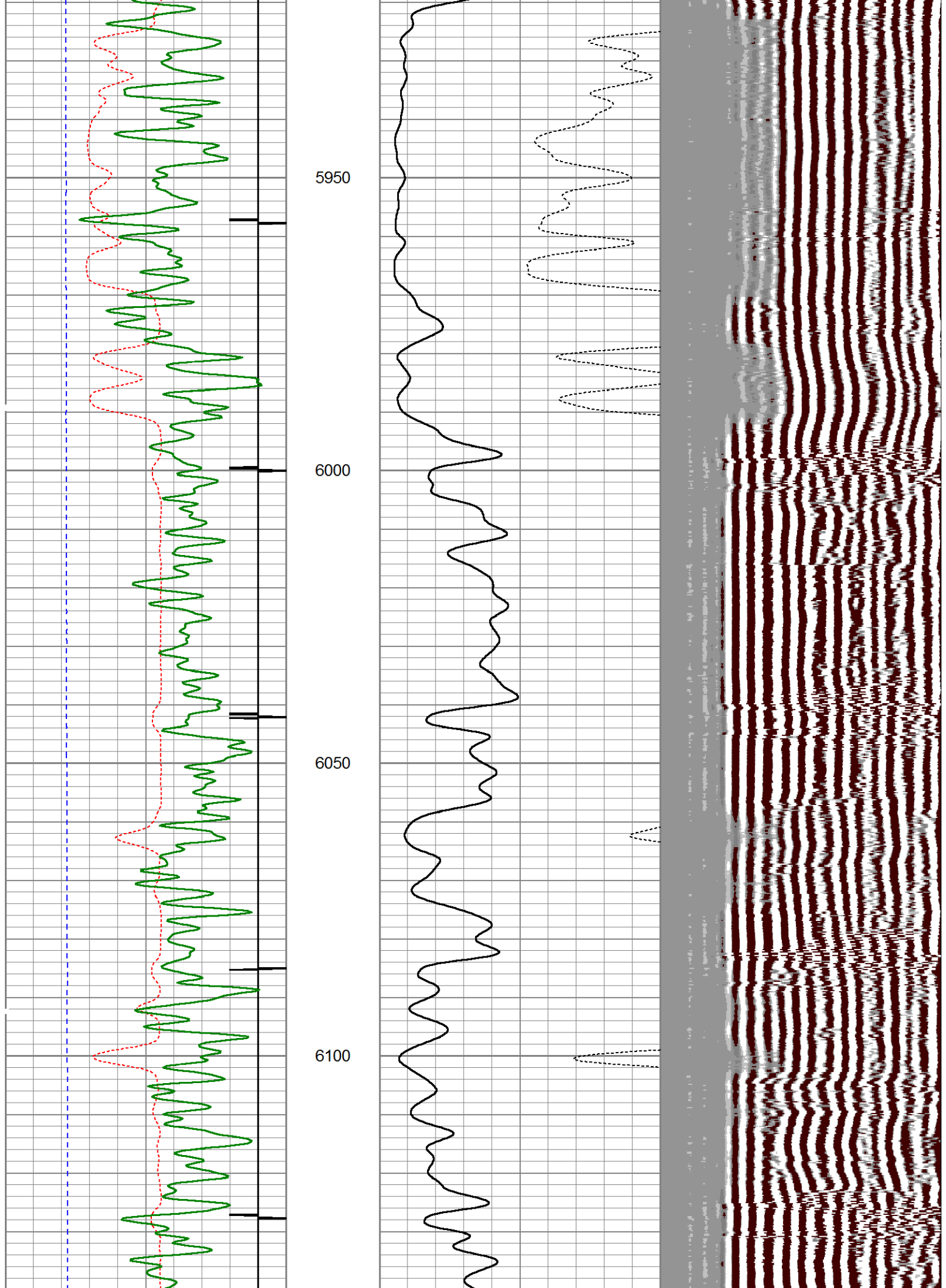
5800

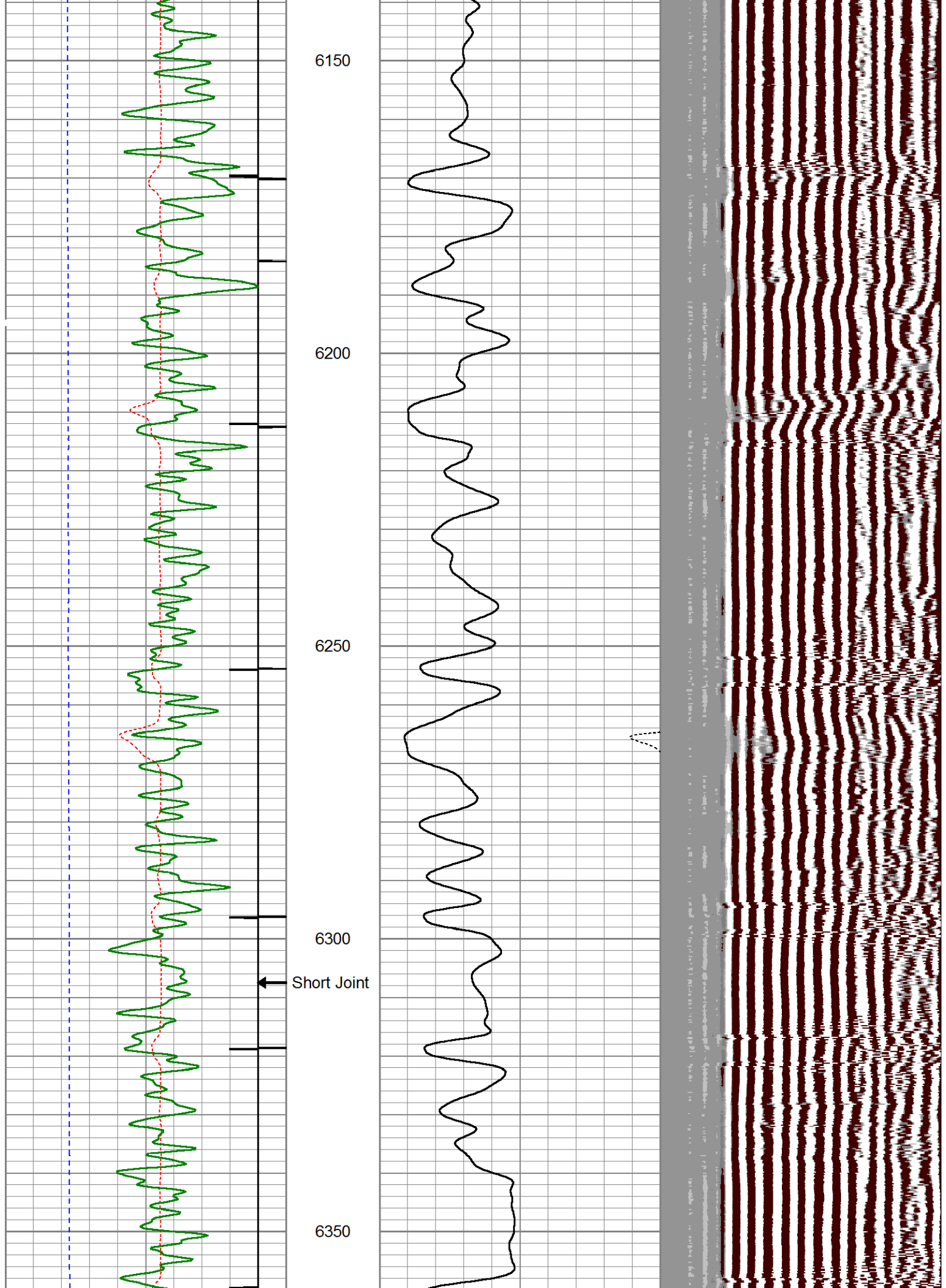
5850

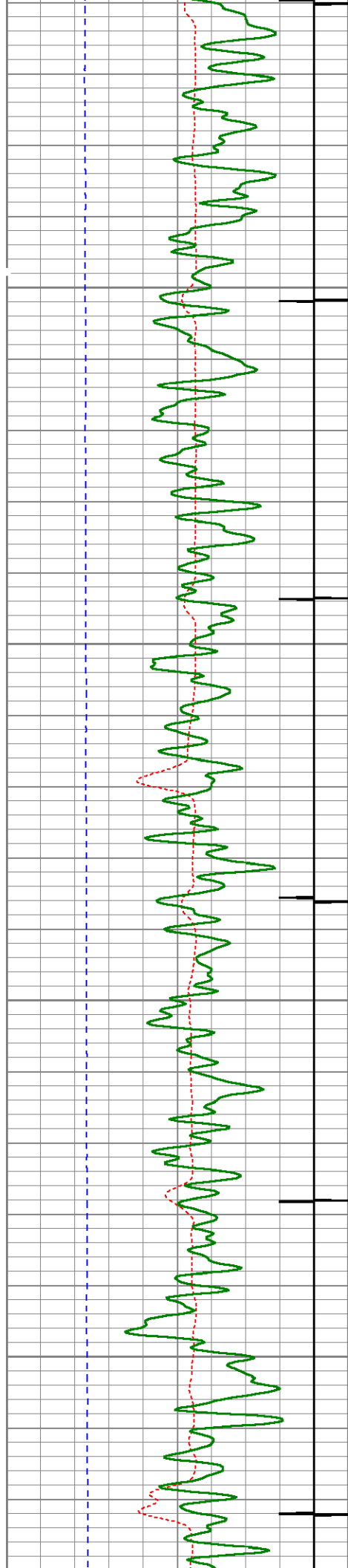
5900









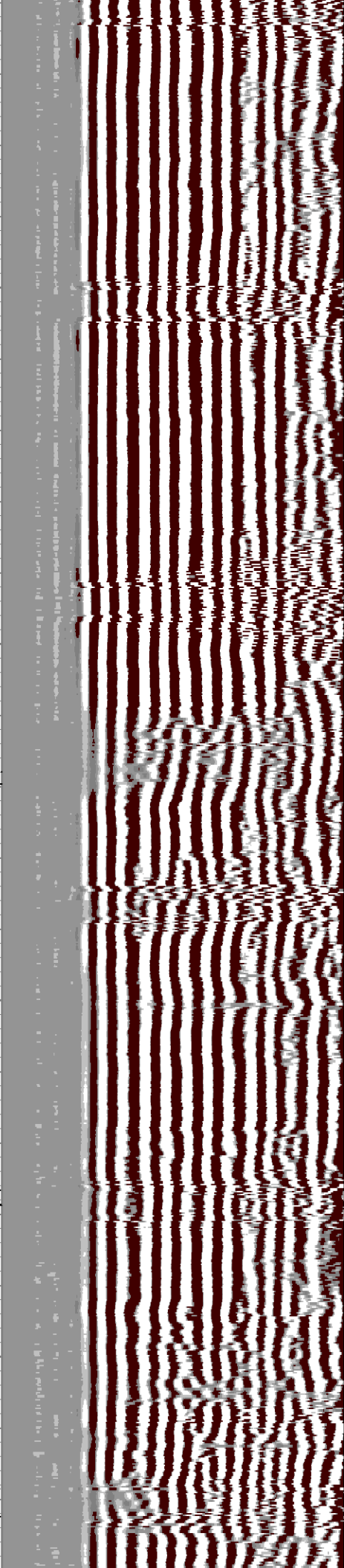
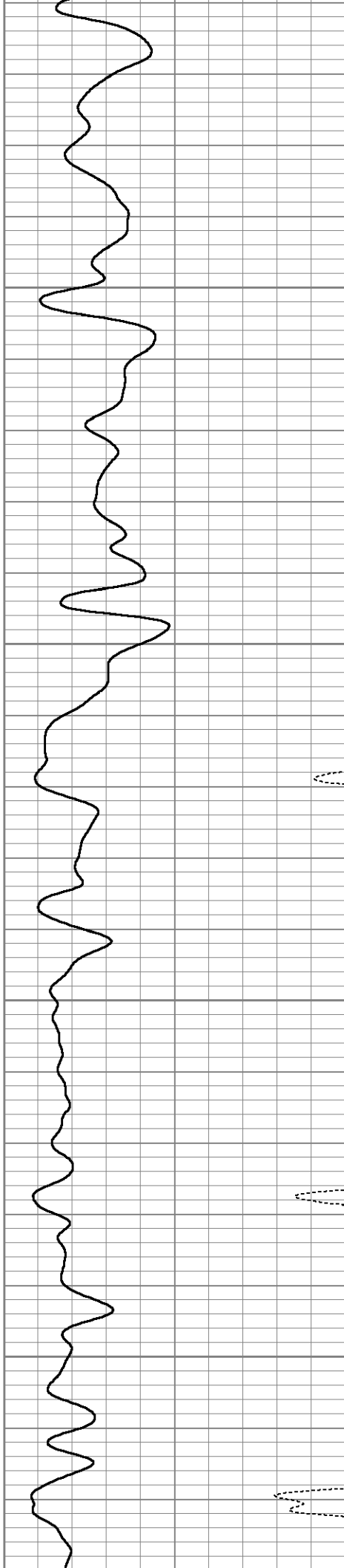


6400

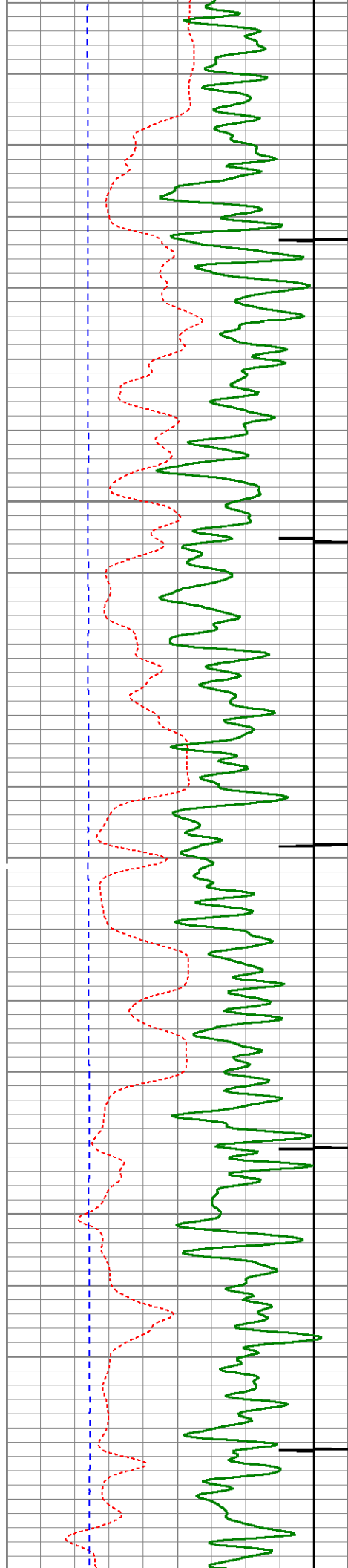
6450

6500

6550







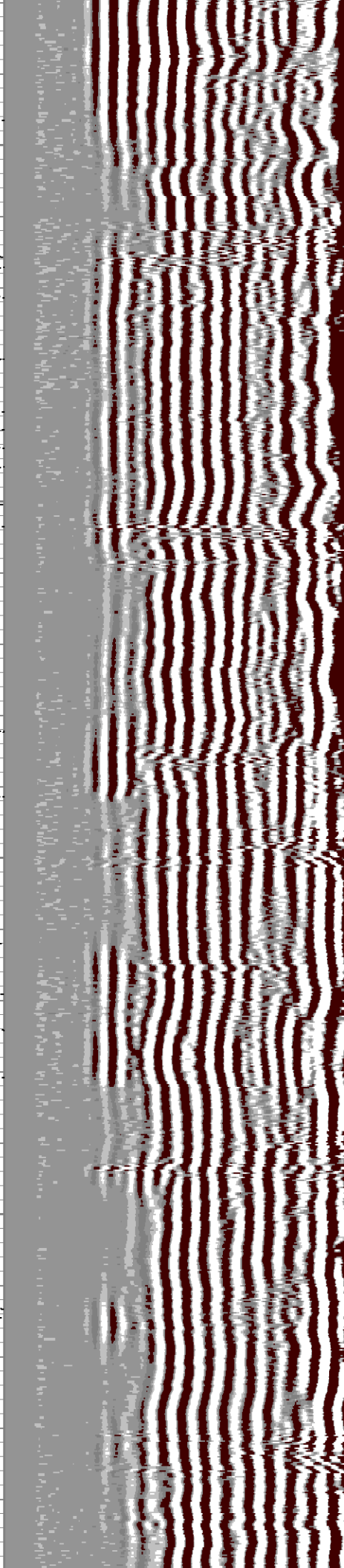
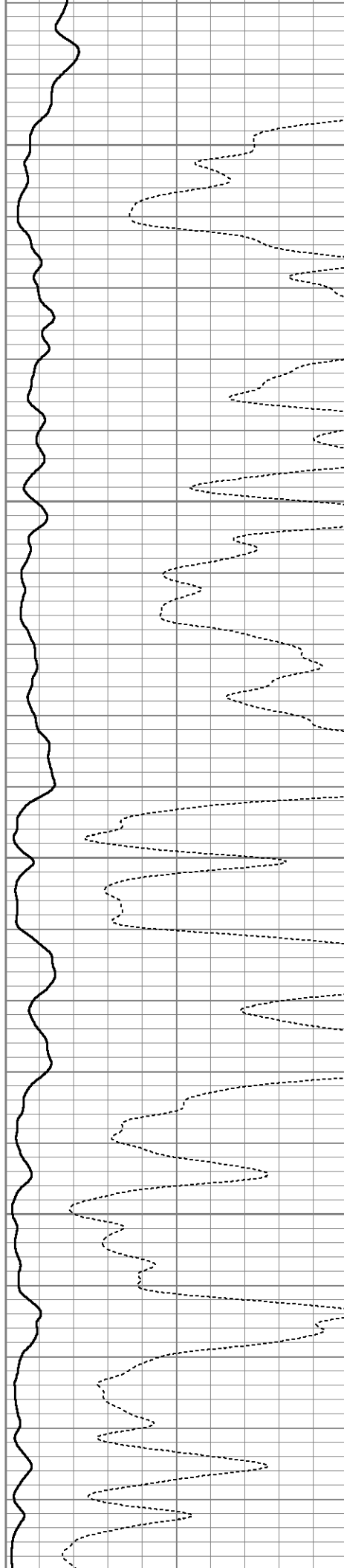
6600

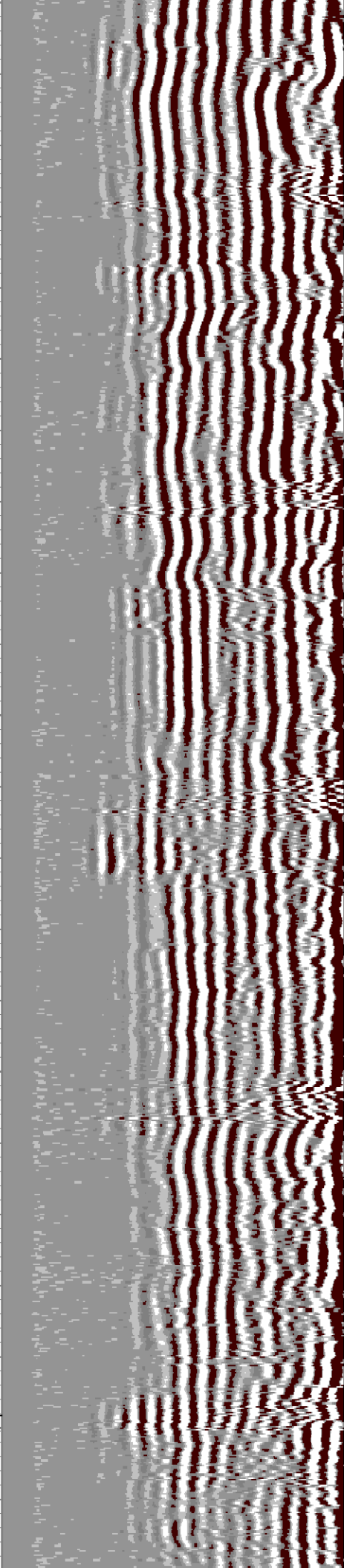
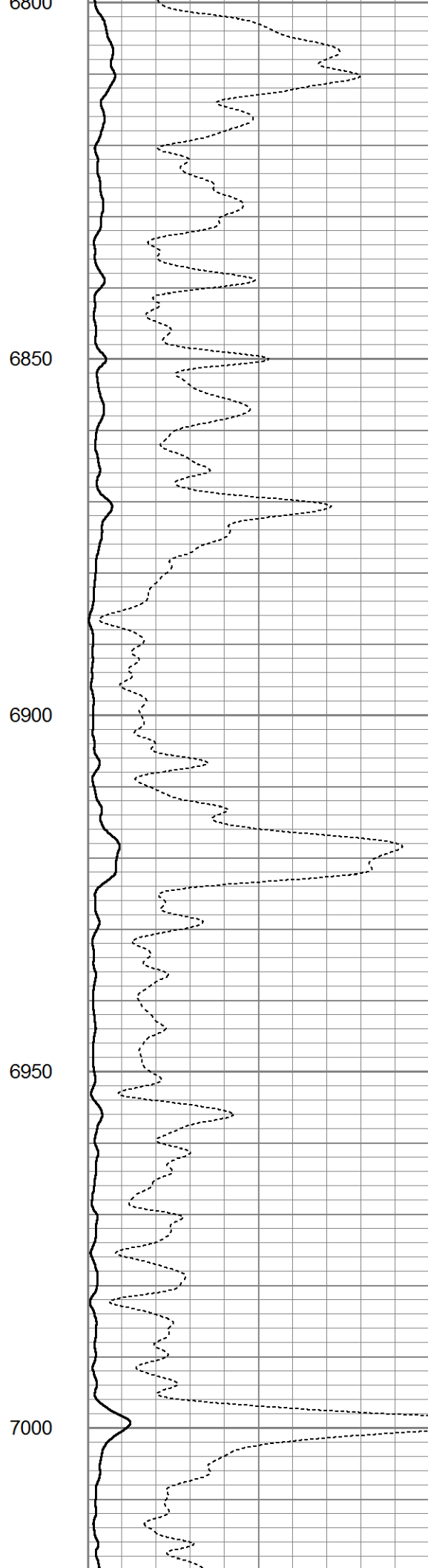
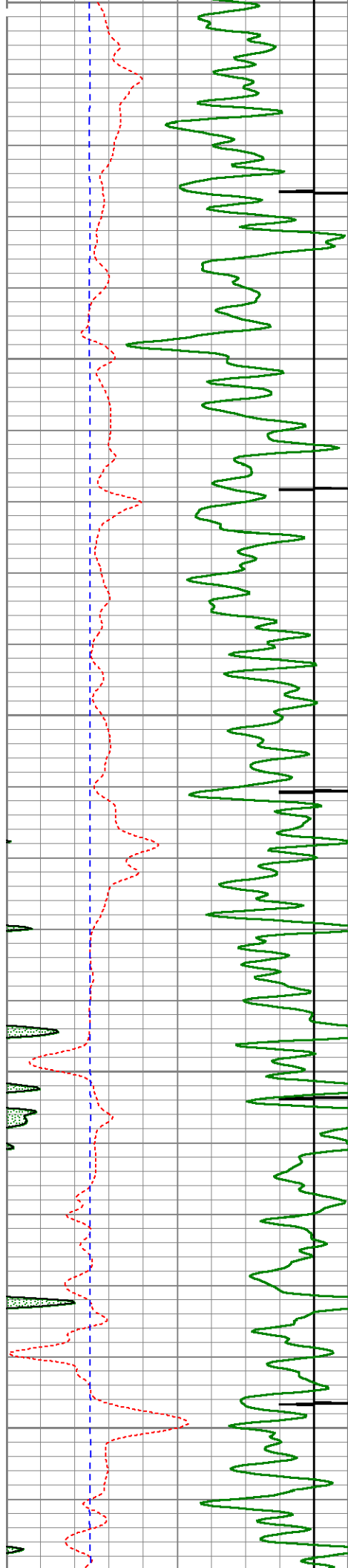
6650

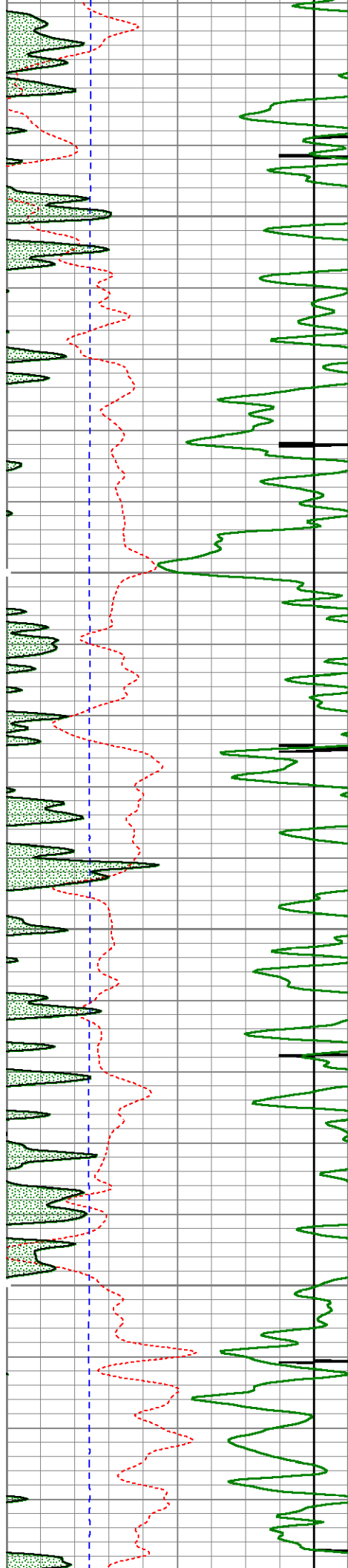
6700

6750

6800





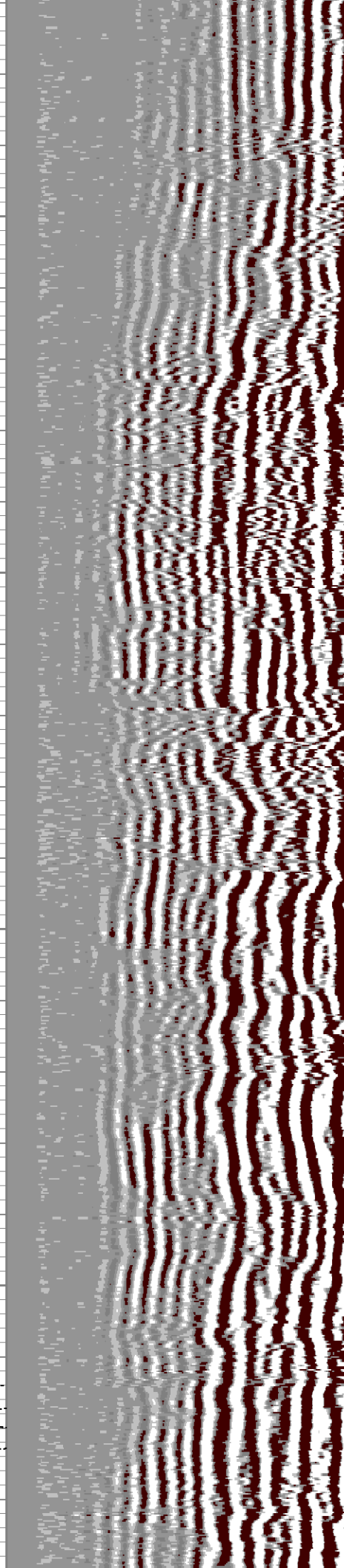
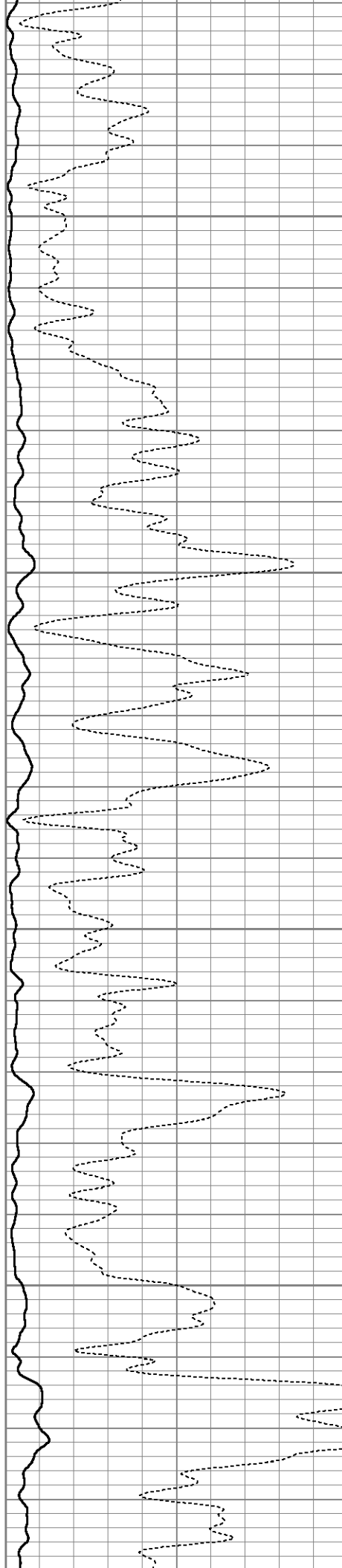


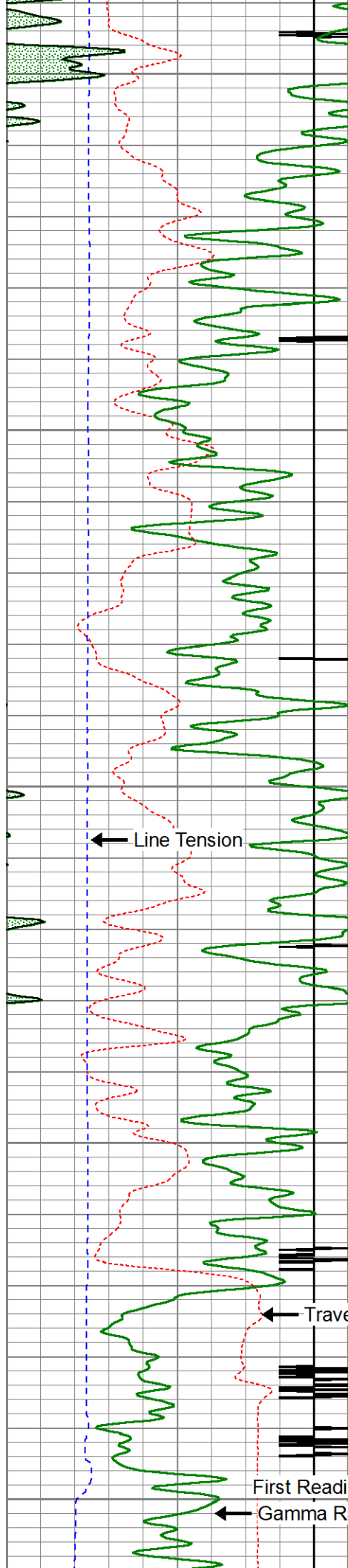
7050

7100

7150

7200





7250

7300

7350

7400

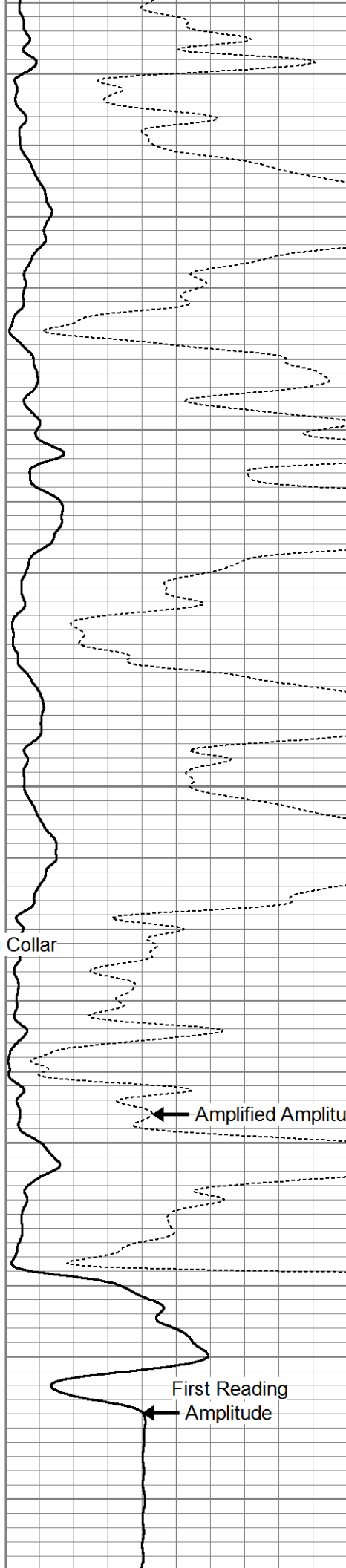
7450

← Line Tension

← Casing Collar

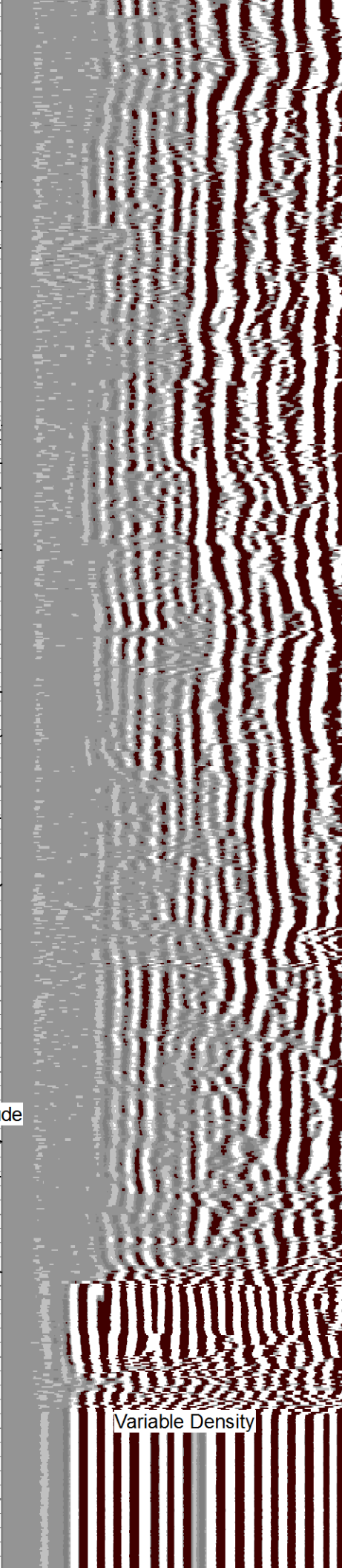
← Travel Time

← First Reading  
Gamma Ray



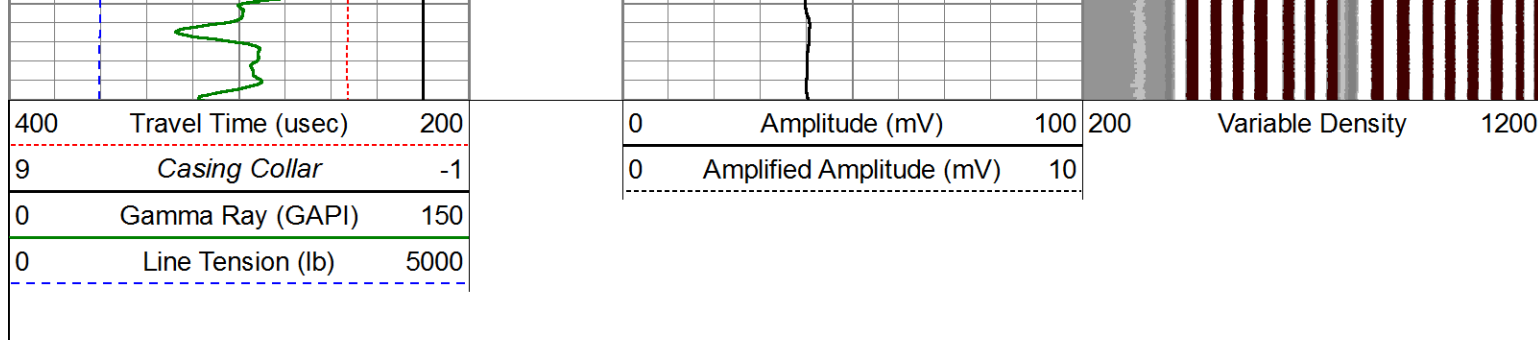
← Amplified Amplitude

← First Reading  
Amplitude



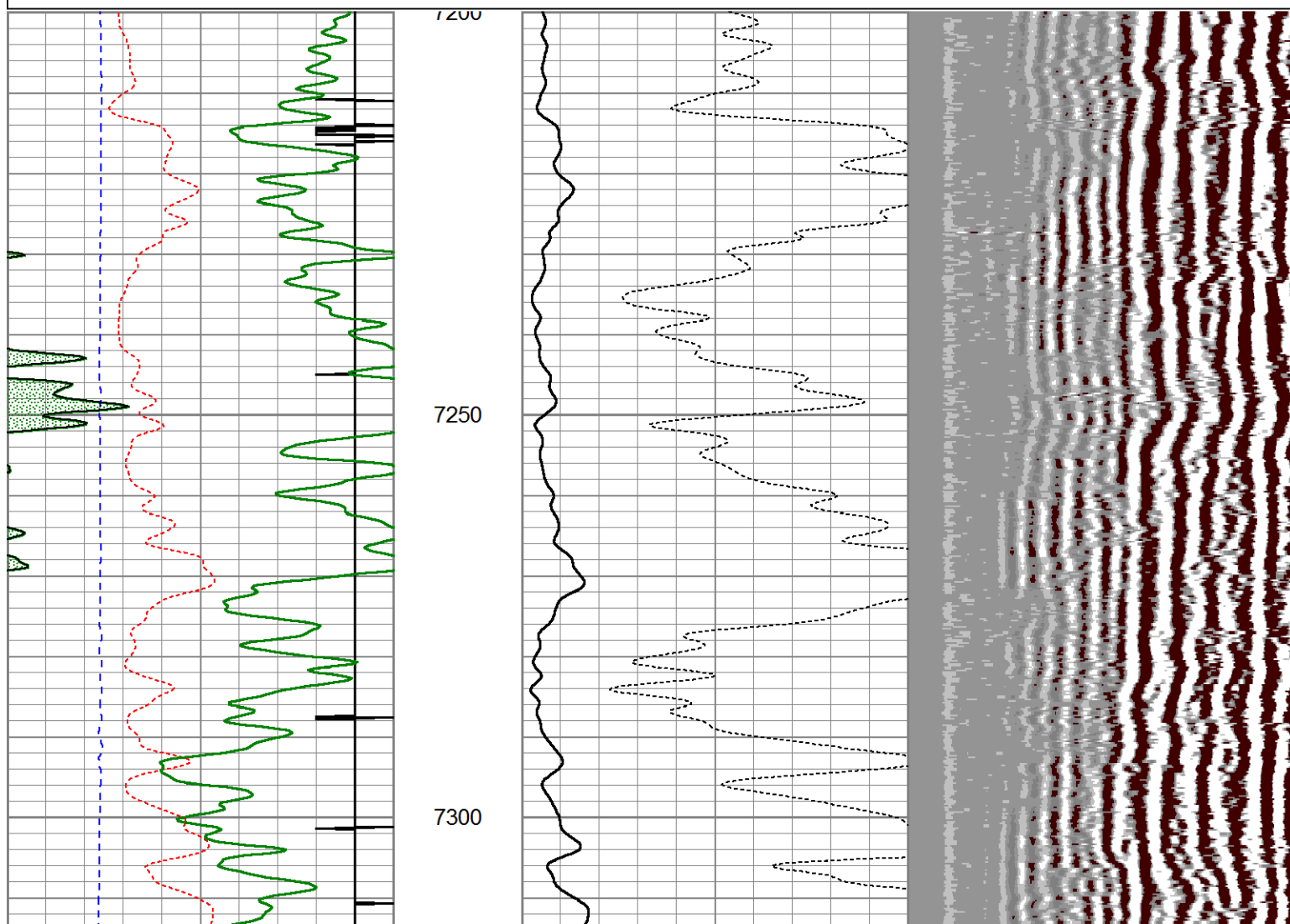
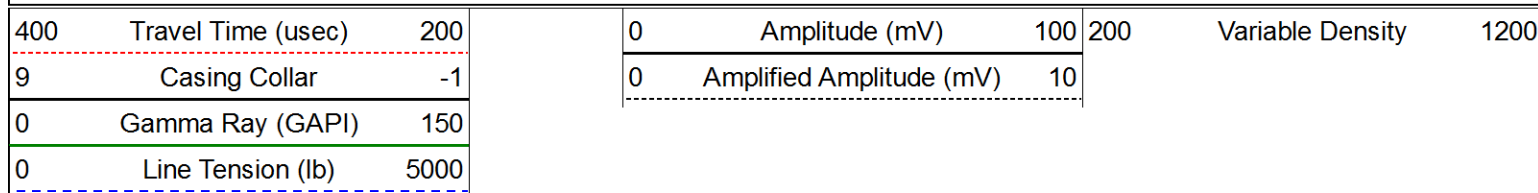
Variable Density



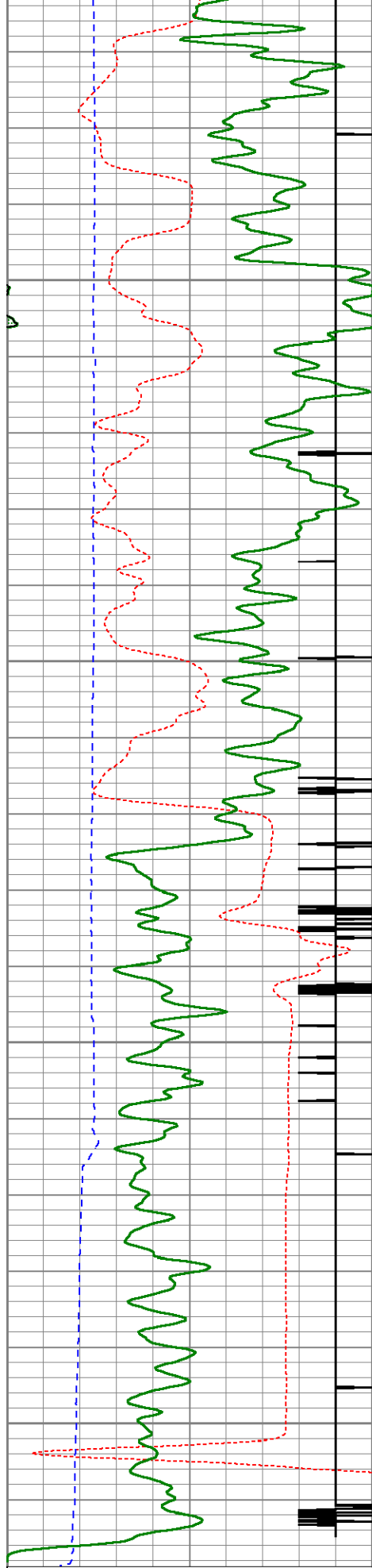


# Repeat Pass ( 0 PSI )

Database File: c:\warrior\data\cased hole\tekton\pavistma south #3\_cbl\tekton pavistma south #3\_cbl.db  
 Dataset Pathname: pass5  
 Presentation Format: cblprobe  
 Dataset Creation: Fri Oct 25 15:46:33 2013 by Log 0  
 Charted by: Depth in Feet scaled 1:240







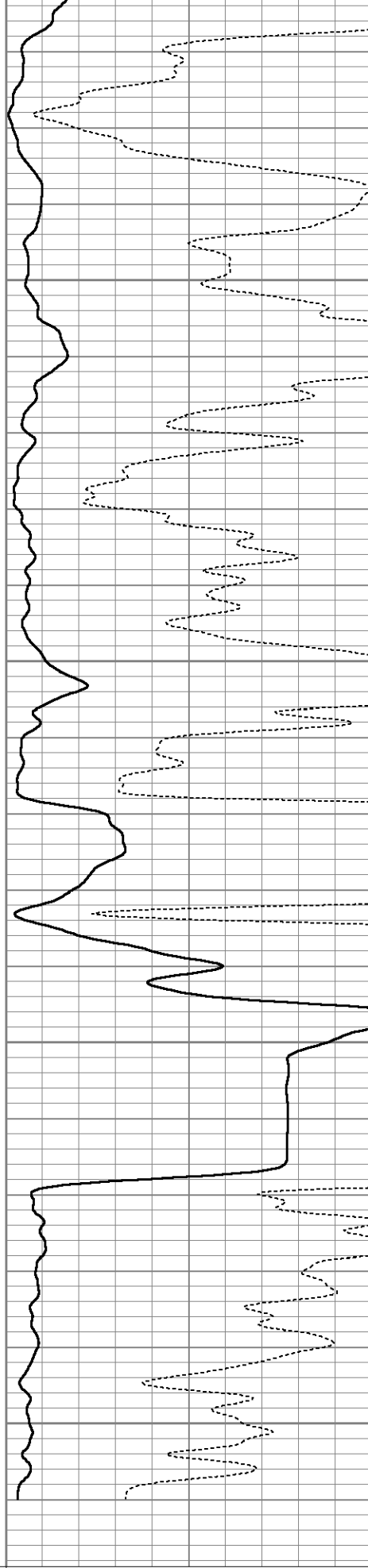
400	Travel Time (uSec)	200
9	Casing Collar	-1
0	Gamma Ray (GAPI)	150

7350

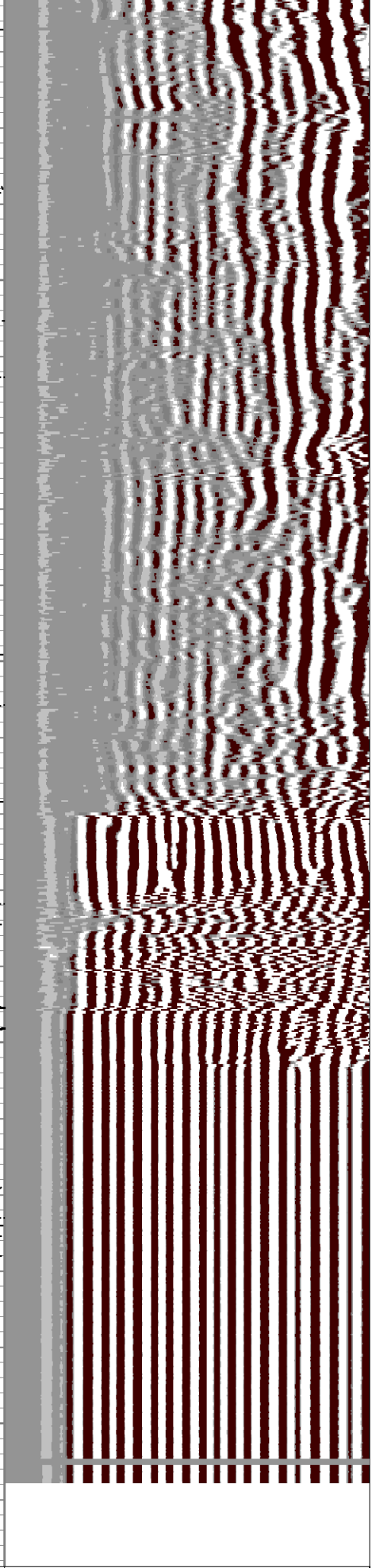
7400

7450

7500



0	Amplitude (mV)	100
0	Amplified Amplitude (mV)	10



200	Variable Density	1200
-----	------------------	------

0	Line Tension (lb)	5000
---	-------------------	------

Calibration Report		
Database File:	C:\Warrior\Data\Cased Hole\Tekton\Pavistma South #3_CBL\tekton pavistma south #3_cbl.db	
Dataset Pathname:	pass9.2	
Dataset Creation:	Fri Oct 25 18:05:43 2013 by Calc 0	

Gamma Ray Calibration Report
------------------------------

Serial Number:	110108-Dig	
Tool Model:	Probe275	
Performed:	Mon Jul 01 16:56:15 2013	
Calibrator Value:	1.0	GAPI
Background Reading:	0.0	cps
Calibrator Reading:	1.0	cps
Sensitivity:	0.8500	GAPI/cps

Temperature Calibration Report
--------------------------------

Serial Number:	110108-Dig	
Tool Model:	Probe275	
Performed:	Sun Jun 13 13:33:21 1993	
	Reference	Reading
Low Reference:	0.00 degF	0.00 cps
High Reference:	1.00 degF	1.00 cps
Gain:	1.00	
Offset:	0.00	
Delta Spacing	2	

Segmented Cement Bond Log Calibration Report
--

Serial Number:	111107	
Tool Model:	Probe	
Calibration Casing Diameter:	7.000	in
Calibration Depth:	7489.892	ft

Master Calibration, performed Fri Oct 25 16:02:01 2013:						
	Raw (v)		Calibrated (mv)		Results	
	Zero	Cal	Zero	Cal	Gain	Offset
3'	0.000	0.620	1.000	62.165	87.354	2.865
CAL	0.000	1.467				
5'	0.000	0.414	1.000	62.165	147.815	1.287
SUM						
S1	0.000	0.665	0.000	100.000	150.483	0.868
S2	0.000	0.690	0.000	100.000	144.960	0.000
S3	0.000	0.694	0.000	100.000	144.002	0.000
S4	0.000	0.672	0.000	100.000	148.856	1.238
S5	0.000	0.621	0.000	100.000	161.152	1.562
S6	0.000	0.596	0.000	100.000	167.786	1.234
S7	0.000	0.584	0.000	100.000	171.105	1.223
S8	0.000	0.554	0.000	100.000	180.488	1.188

Internal Reference Calibration, performed Wed Dec 31 17:00:00 1969:
---

Raw (v)		Calibrated (v)		Results	
	Zero	Cal	Zero	Cal	Gain      Offset
CAL	0.000	0.000	0.000	1.467	1.000      0.000
Air Zero Calibration, performed Thu Oct 17 08:50:08 2013:					
Raw (v)		Calibrated (v)		Results	
	Zero	Zero		Offset	
3'	0.000	0.000		0.000	
5'	0.000	0.000		0.000	
SUM					
S1	0.000	0.000		0.000	
S2	0.000	0.000		0.000	
S3	0.000	0.000		0.000	
S4	0.000	0.000		0.000	
S5	0.000	0.000		0.000	
S6	0.000	0.000		0.000	
S7	0.000	0.000		0.000	
S8	0.000	0.000		0.000	

Sensor	Offset (ft)	Schematic	Description	Len (ft)	OD (in)	Wt (lb)
			Titan Cable_head	1.00	1.44	10.00
			Probe275 2.75" Centralizer	2.88	2.75	20.00
			RBT-Probe (111107) Probe Radii Bond Tool with Digital Telemetry	8.75	2.75	90.00
WV3FT	11.84					
WVFCAL	11.84					
WVFS1	11.84					
WVFS2	11.84					
WVFS3	11.84					
WVFS4	11.84					
WVFS5	11.84					
WVFS6	11.84					
WVFS7	11.84					
WVFS8	11.84					
WV5FT	10.84					

