



**Cement Bond/
Variable Density Log
Gamma Ray/CCL**

Company		Tekton Windsor LLC	
Well		Pavistma South #2	
Field		Wattenberg	
County		Weld	
State		Colorado	
Location:		API # : 05-123-36652	
SHL: 1661' FSL & 190 FWL		Other Services NONE	
SEC 32 TWP 6N RGE 67W		Elevation	
Permanent Datum		Ground Level	
Log Measured From		Kelly Bushing 22.5' A.P.D	
Drilling Measured From		Kelly Bushing	
Date		October 24, 2013	
Run Number		1	
Depth Driller		12,007'	
Depth Logger		7524'	
Bottom Logged Interval		7512' 4211'	
Top Log Interval		8.75'	
Open Hole Size		Water	
Type Fluid		8.34	
Density / Viscosity		-	
Max. Recorded Temp.		4620'	
Estimated Cement Top		16:00	
Time Well Ready		16:31	
Time Logger on Bottom		13033	
Equipment Number		Brighton	
Location		C. Rall	
Recorded By		R. Grissom	
Witnessed By		Rick Ohlmeier	
Borehole Record		Tubing Record	
Run Number		Bit	
From		To	
Size		Weight	
From		To	
Casing Record		Top	
Surface String		Bottom	
Prot. String		873'	
Production String		7729'	
Liner		12007'	

<<< Fold Here >>>

All interpretations are opinions based on inferences from electrical or other measurements and we cannot and do not guarantee the accuracy or correctness of any interpretation, and we shall not, except in the case of gross or willful negligence on our part, be liable or responsible for any loss, costs, damages, or expenses incurred or sustained by anyone resulting from any interpretation made by any of our officers, agents or employees. These interpretations are also subject to our general terms and conditions set out in our current Price Schedule.

Comments

Main & Repeat Pass Zero Pressure on Surface

Estimated Top of Cement 4620'

Short Joint 6452' to 6474'

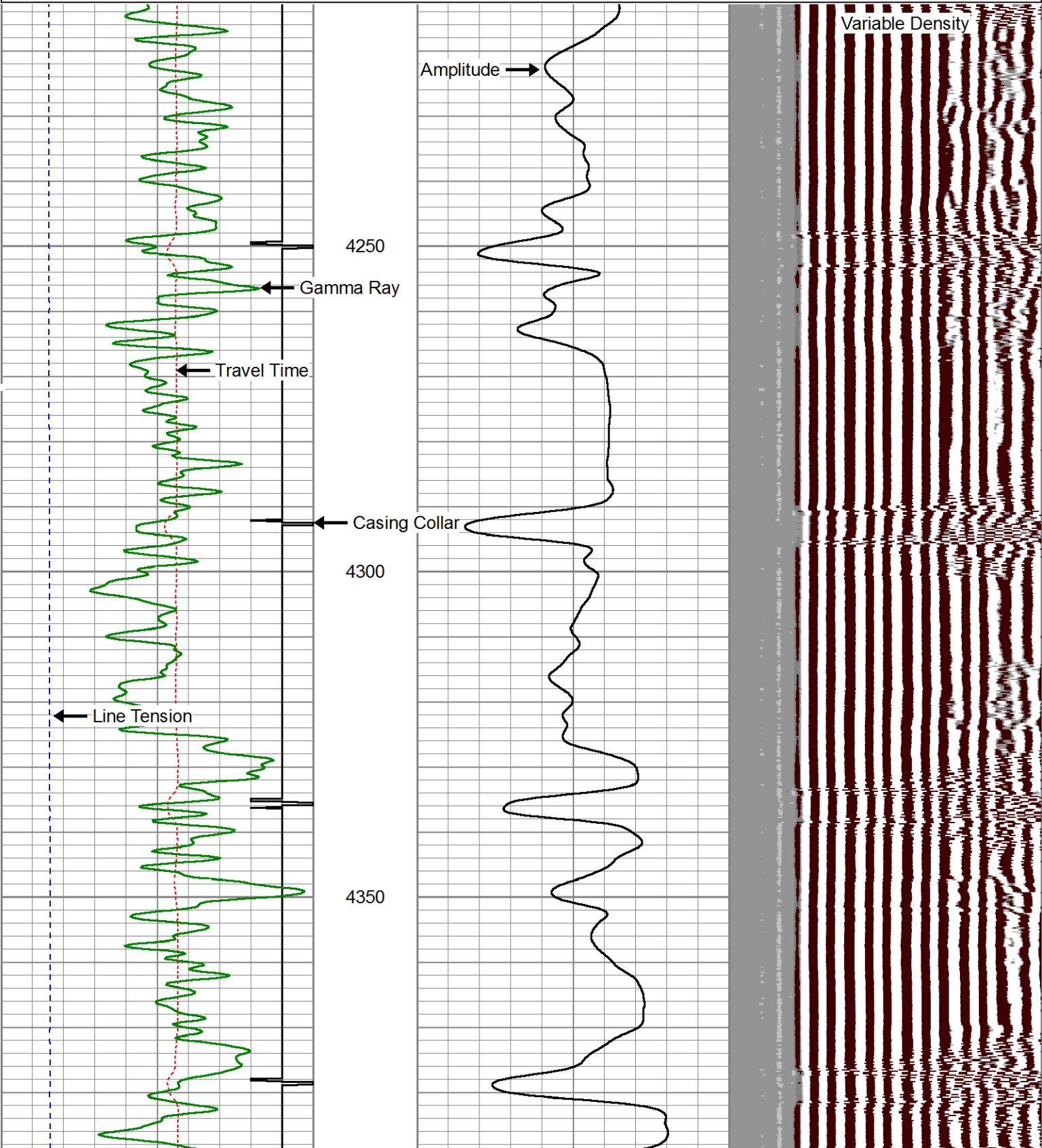
Liner Top @ 7498'

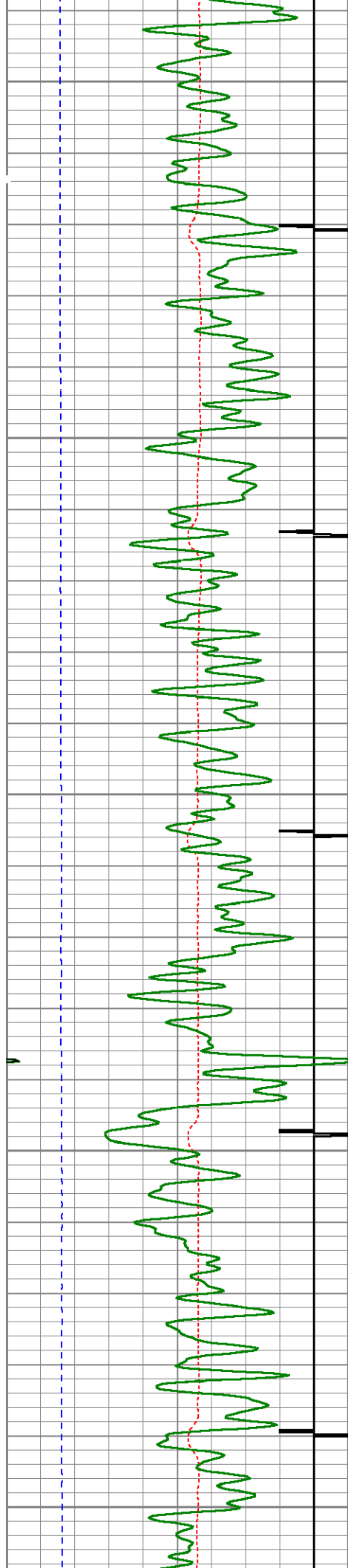
Thank you for using Allied Wireline
(303) 659-4609



Main Pass (0 PSI)

400	Travel Time (usec)	200	0	Amplitude (mV)	100	200	Variable Density	1200
9	Casing Collar	-1	0	Amplified Amplitude (mV)	10			
0	Gamma Ray (GAPI)	150						
0	Line Tension (lb)	5000						





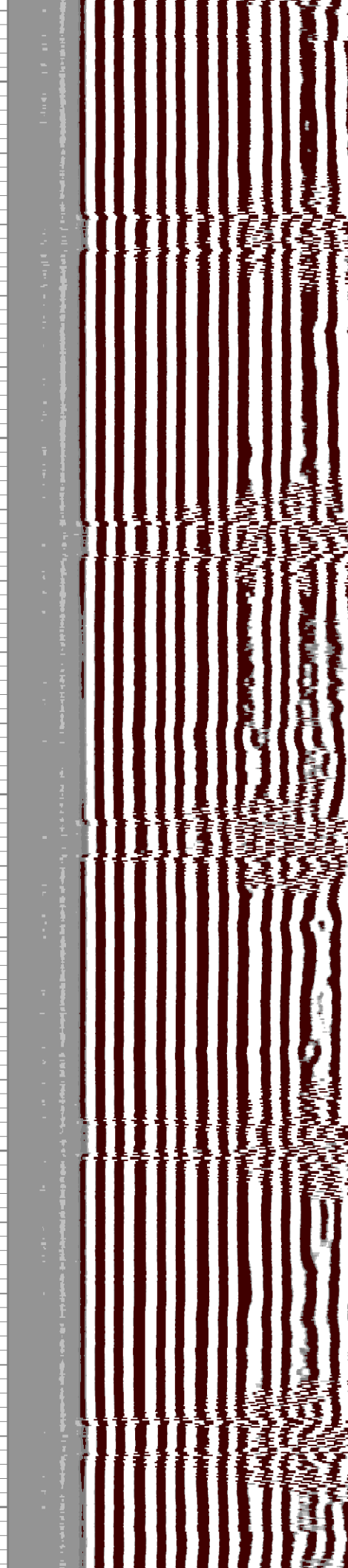
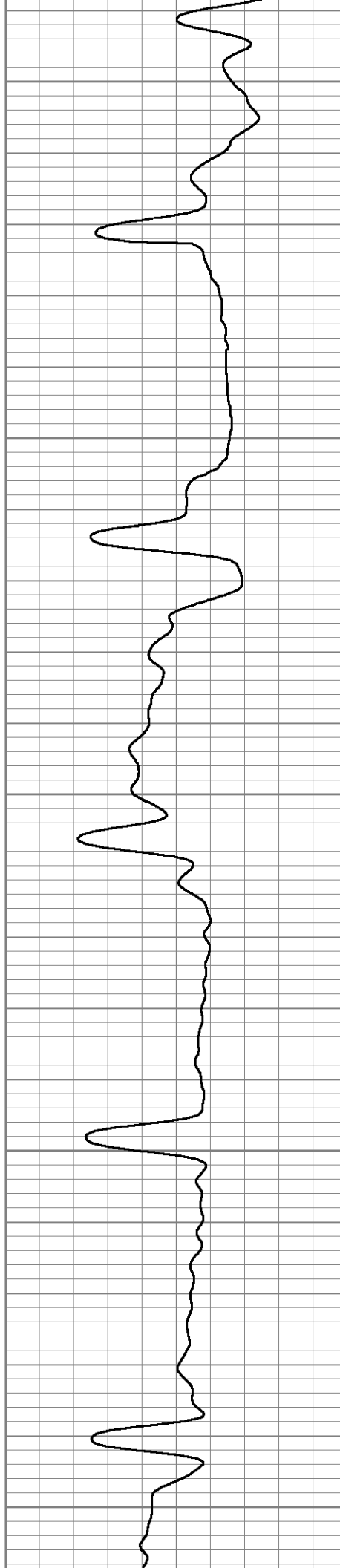
4400

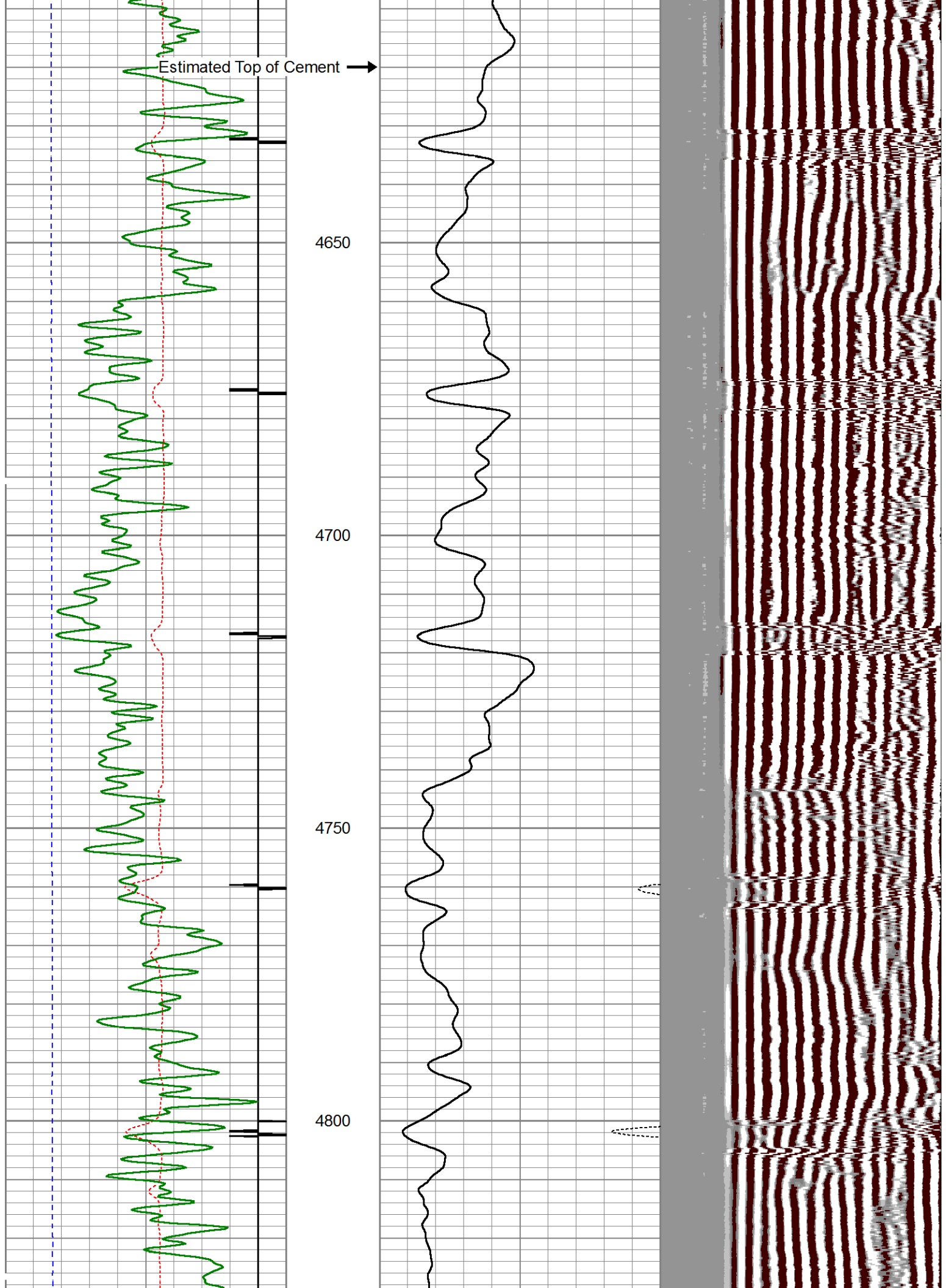
4450

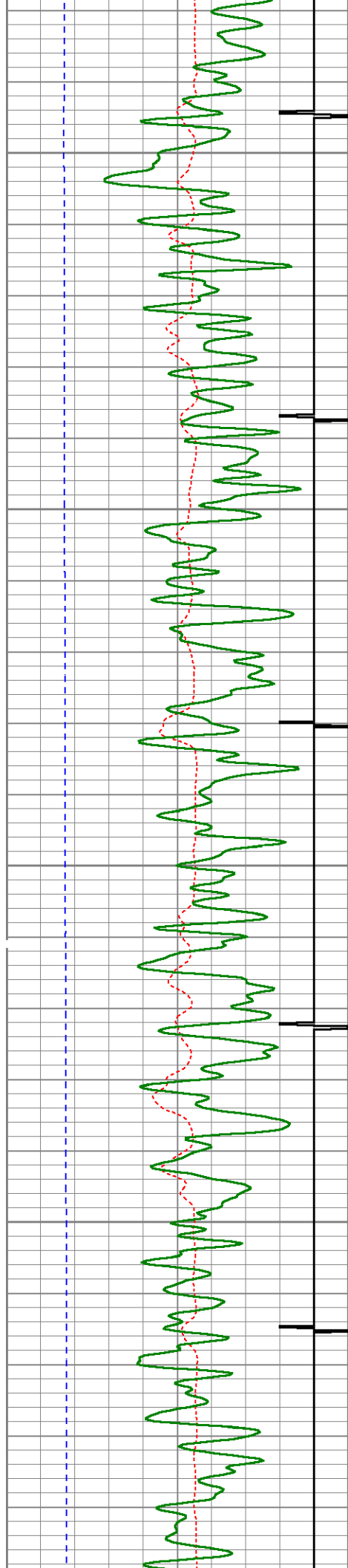
4500

4550

4600





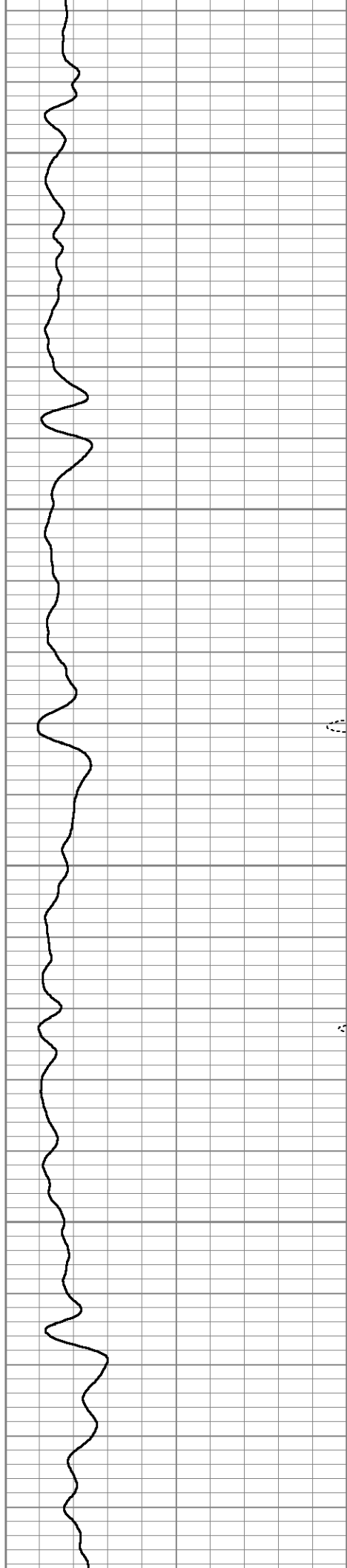


4850

4900

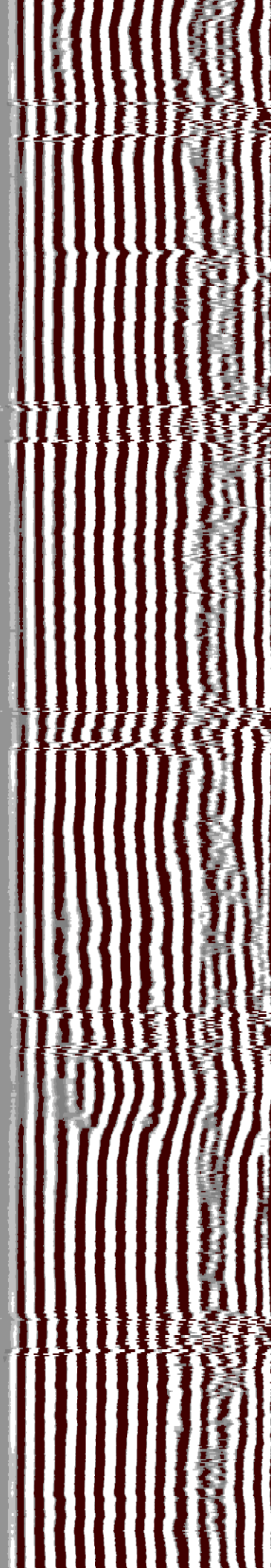
4950

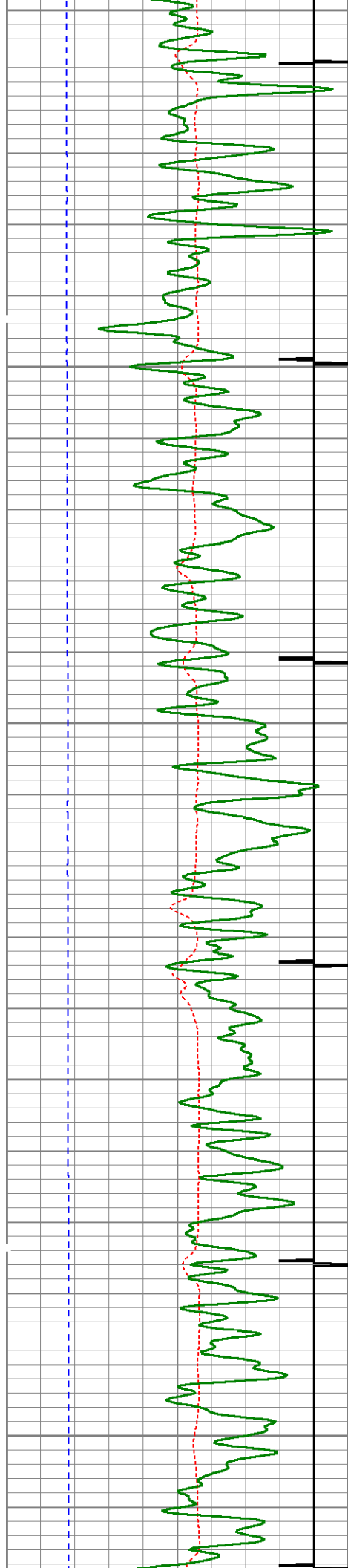
5000



0

2





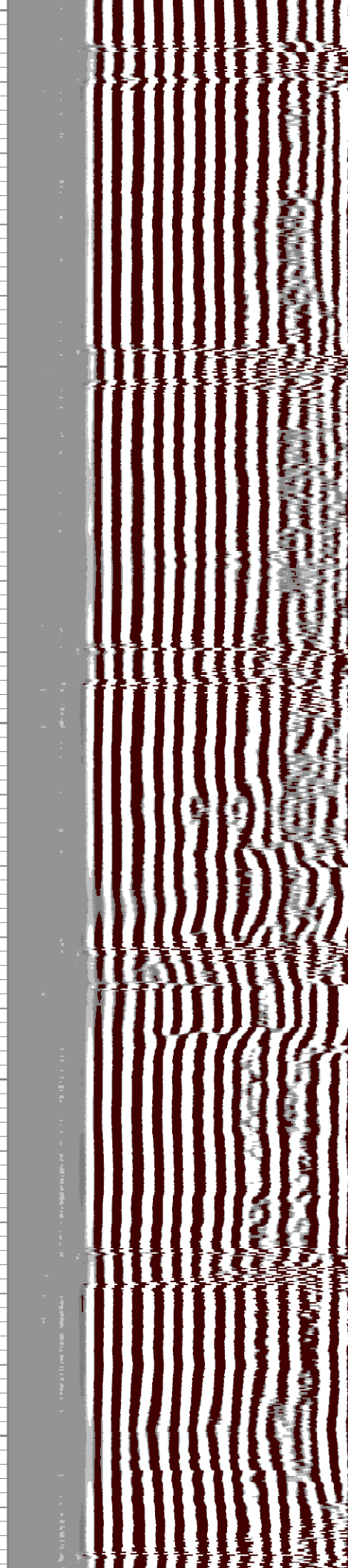
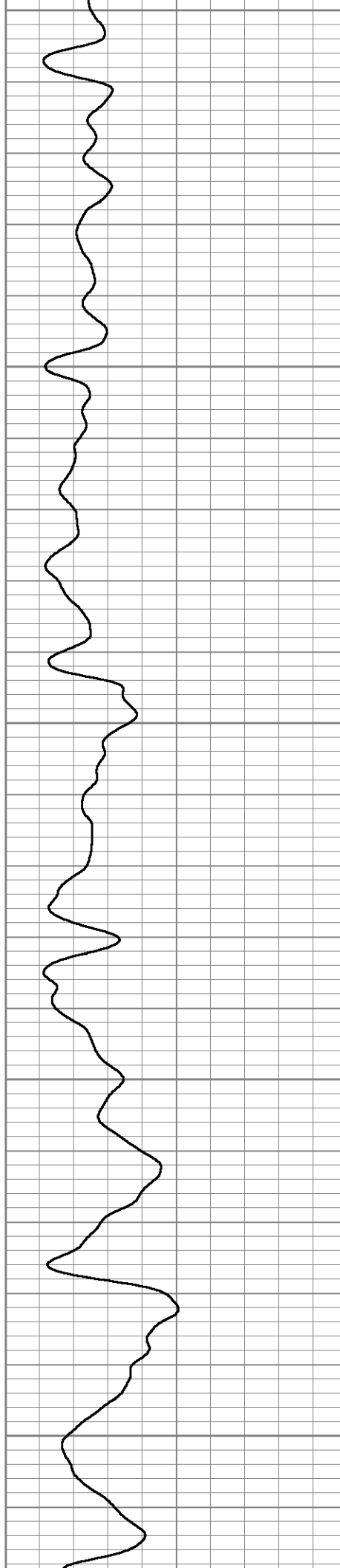
5050

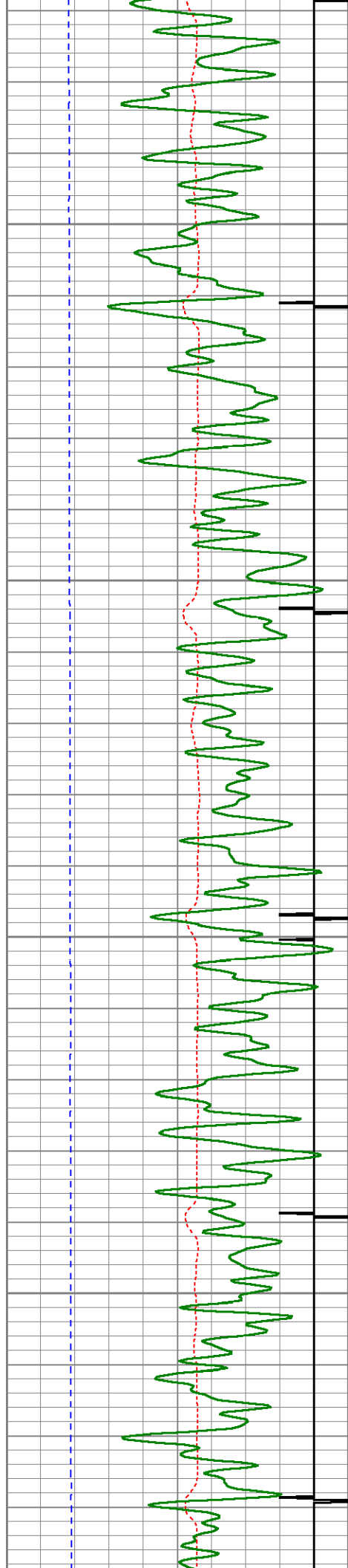
5100

5150

5200

5250



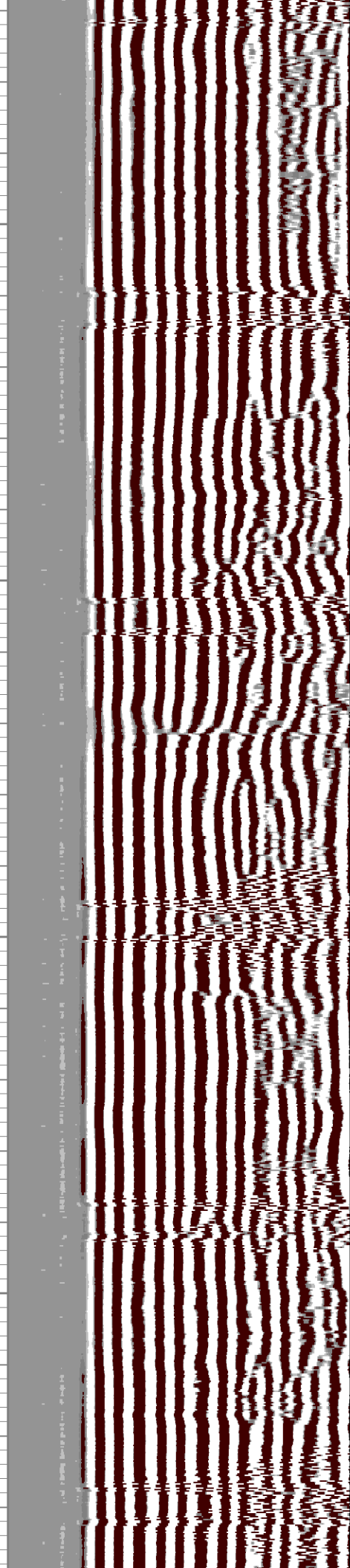
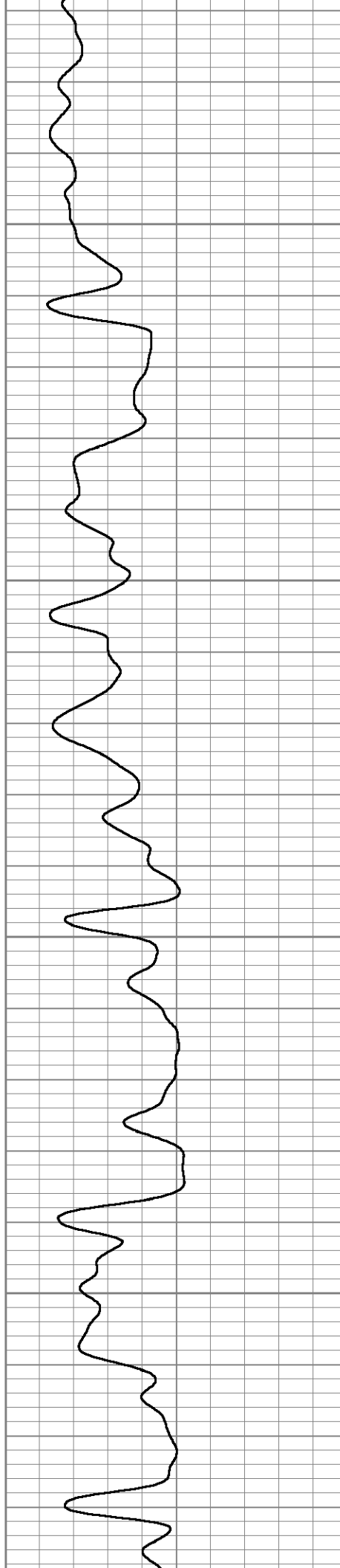


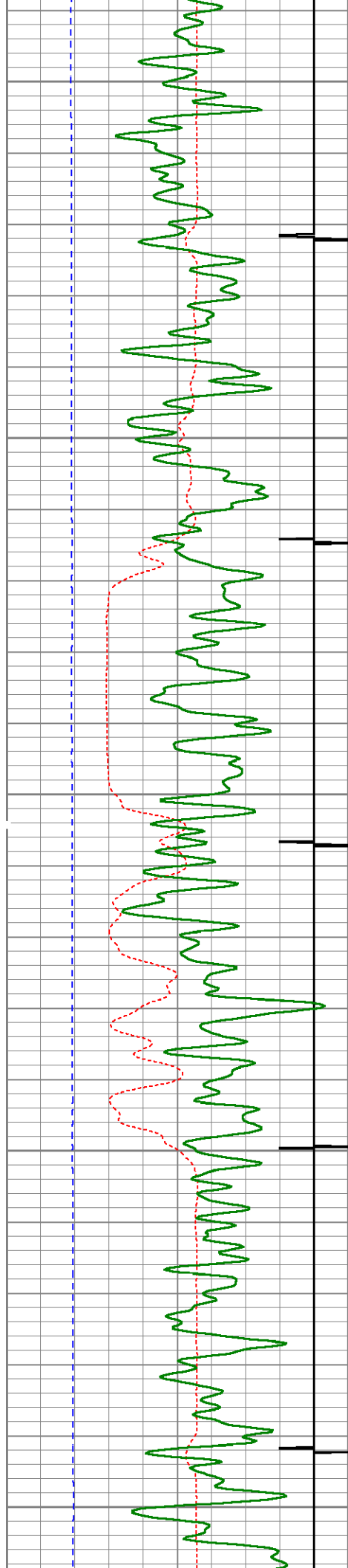
5300

5350

5400

5450





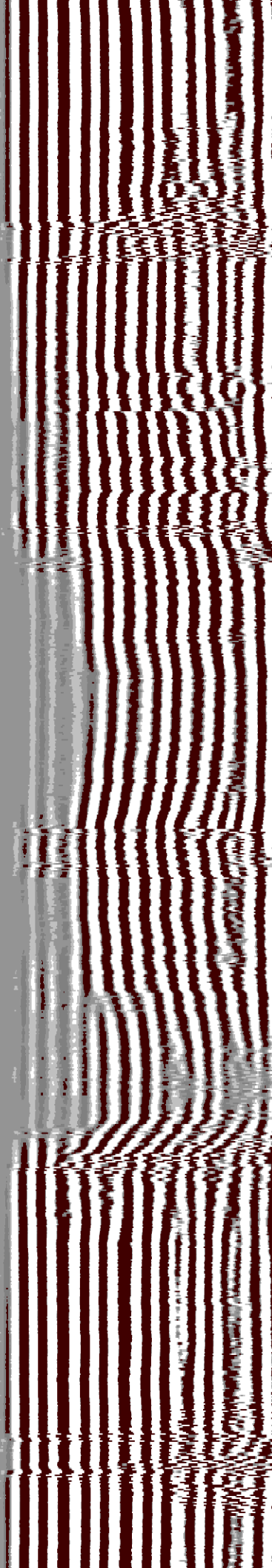
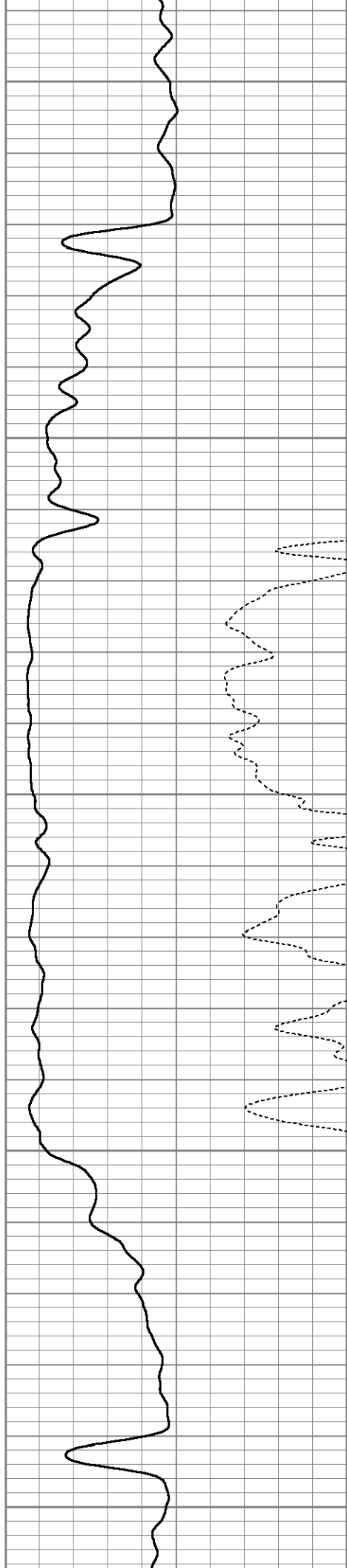
5500

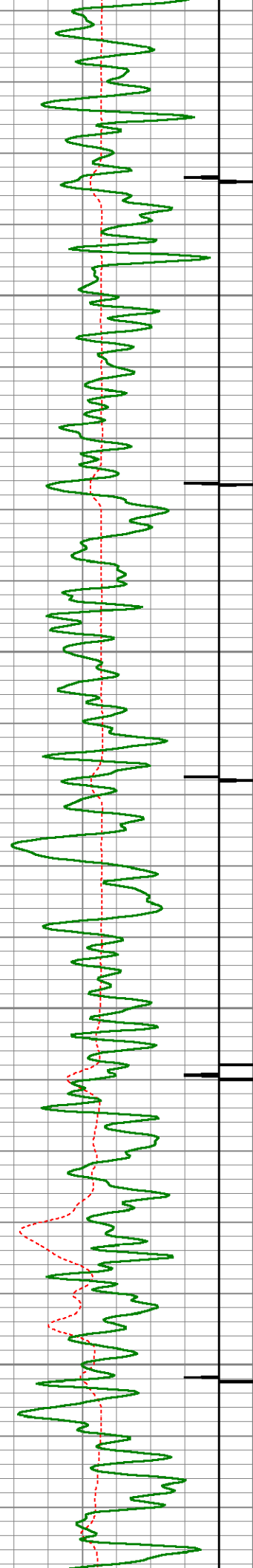
5550

5600

5650

5700



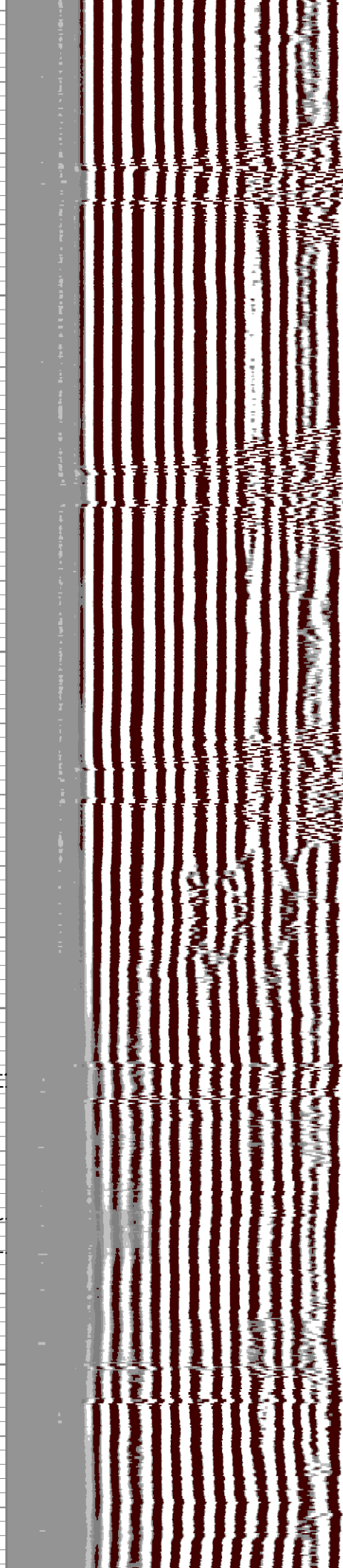
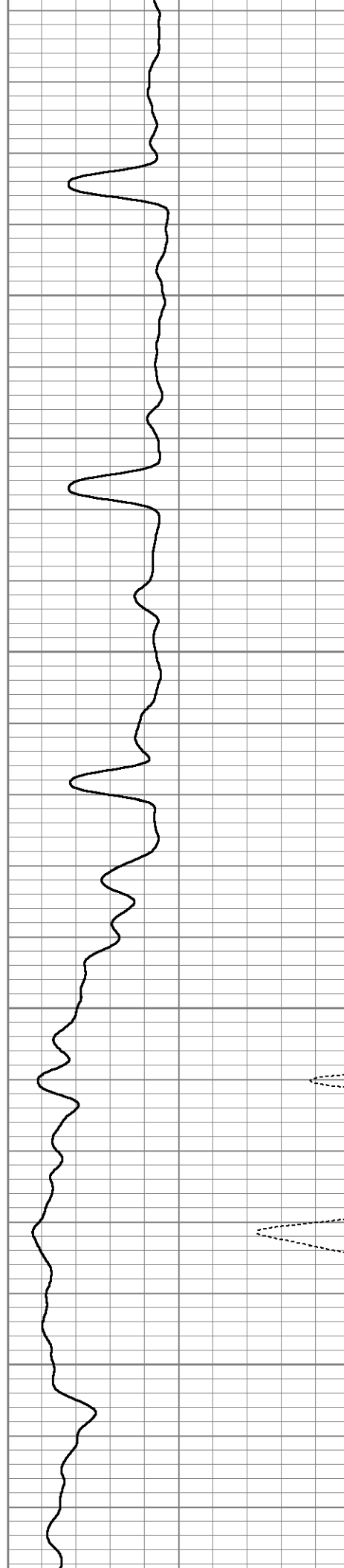


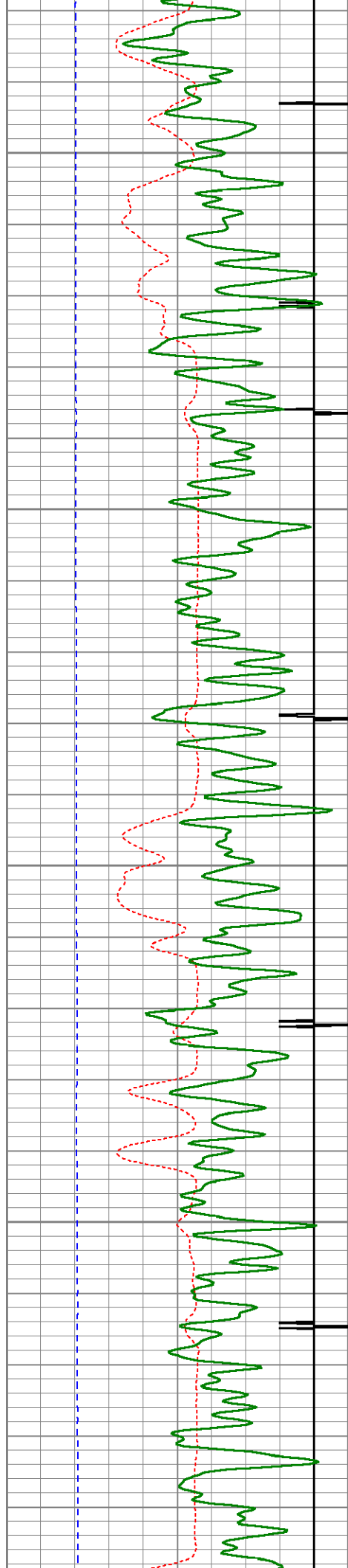
5750

5800

5850

5900



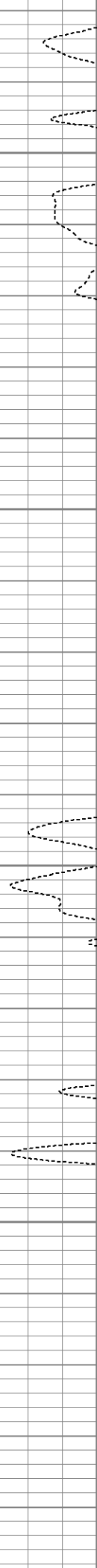
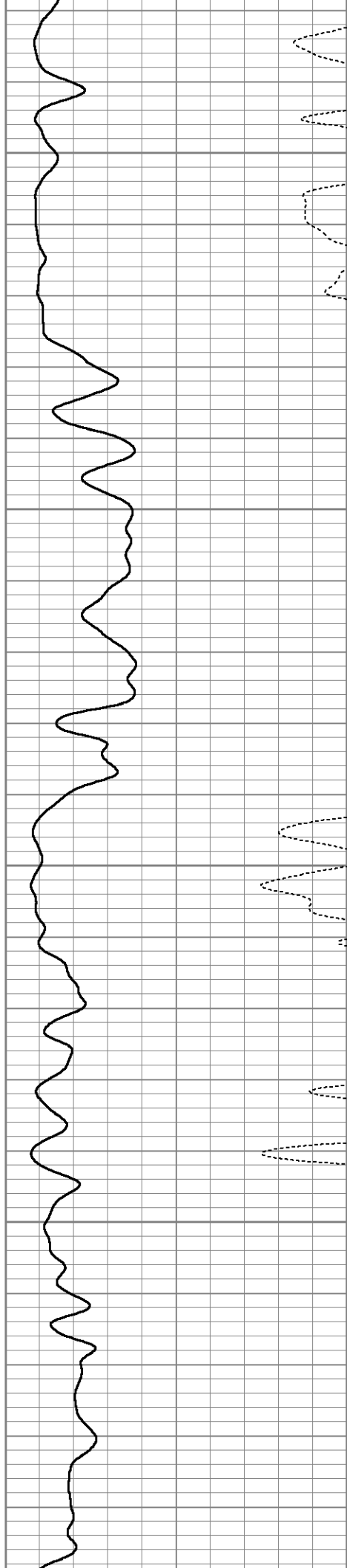


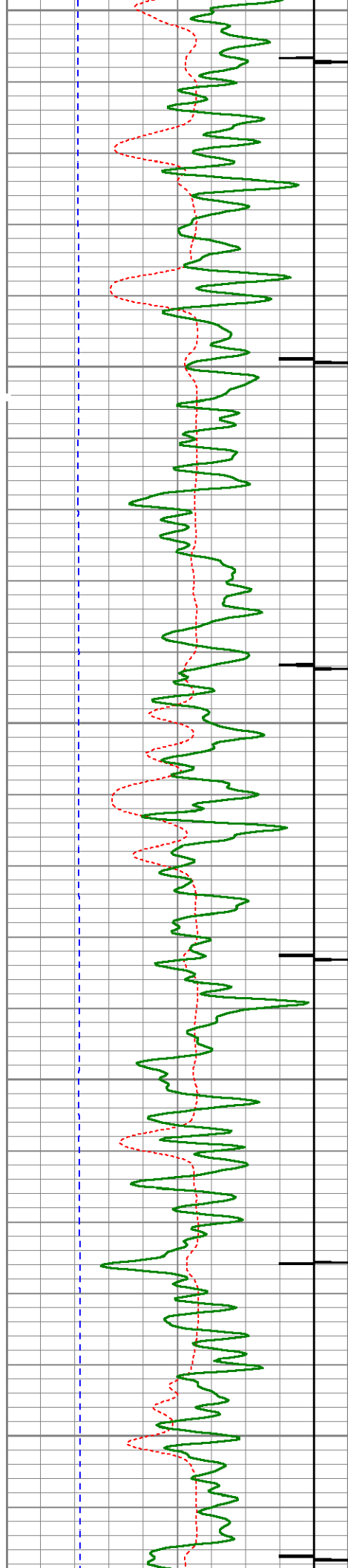
5950

6000

6050

6100





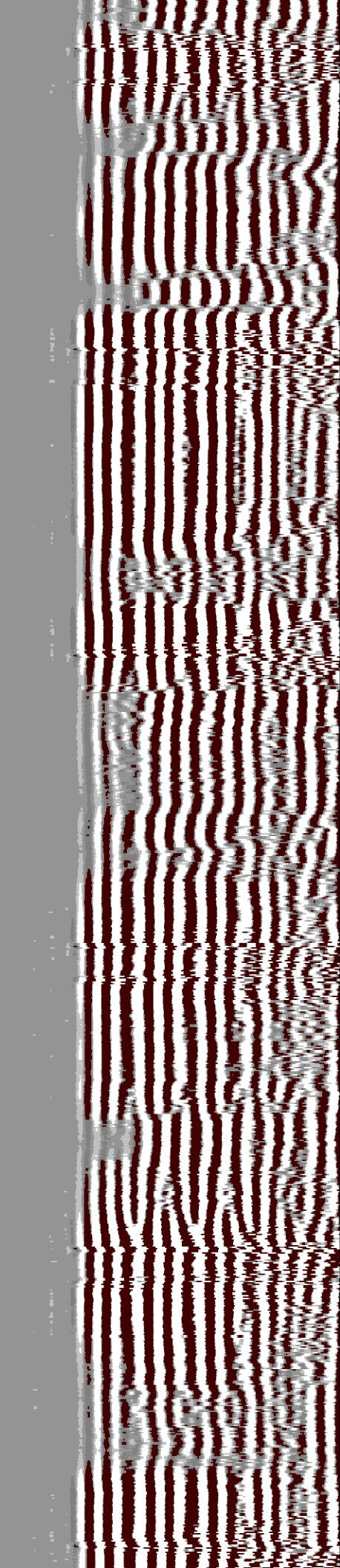
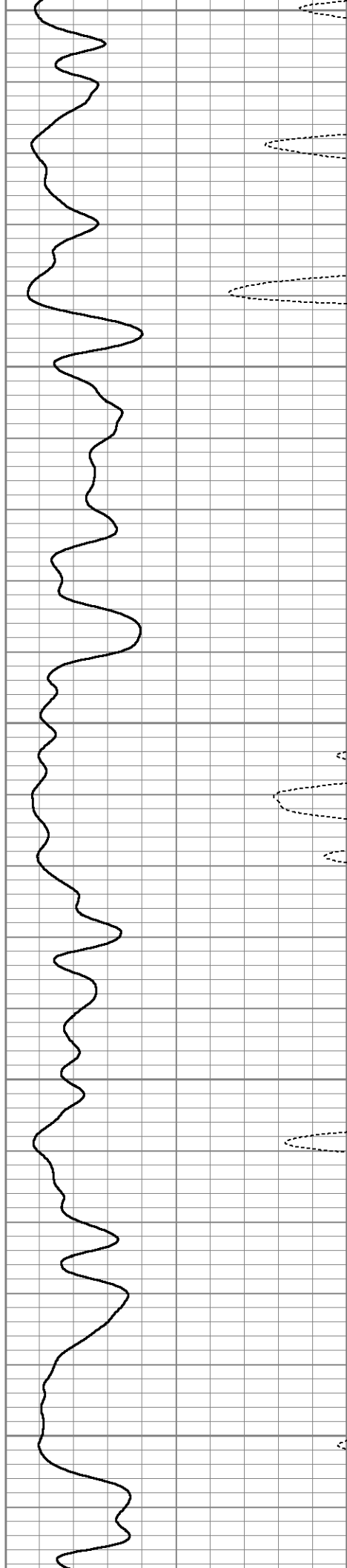
6150

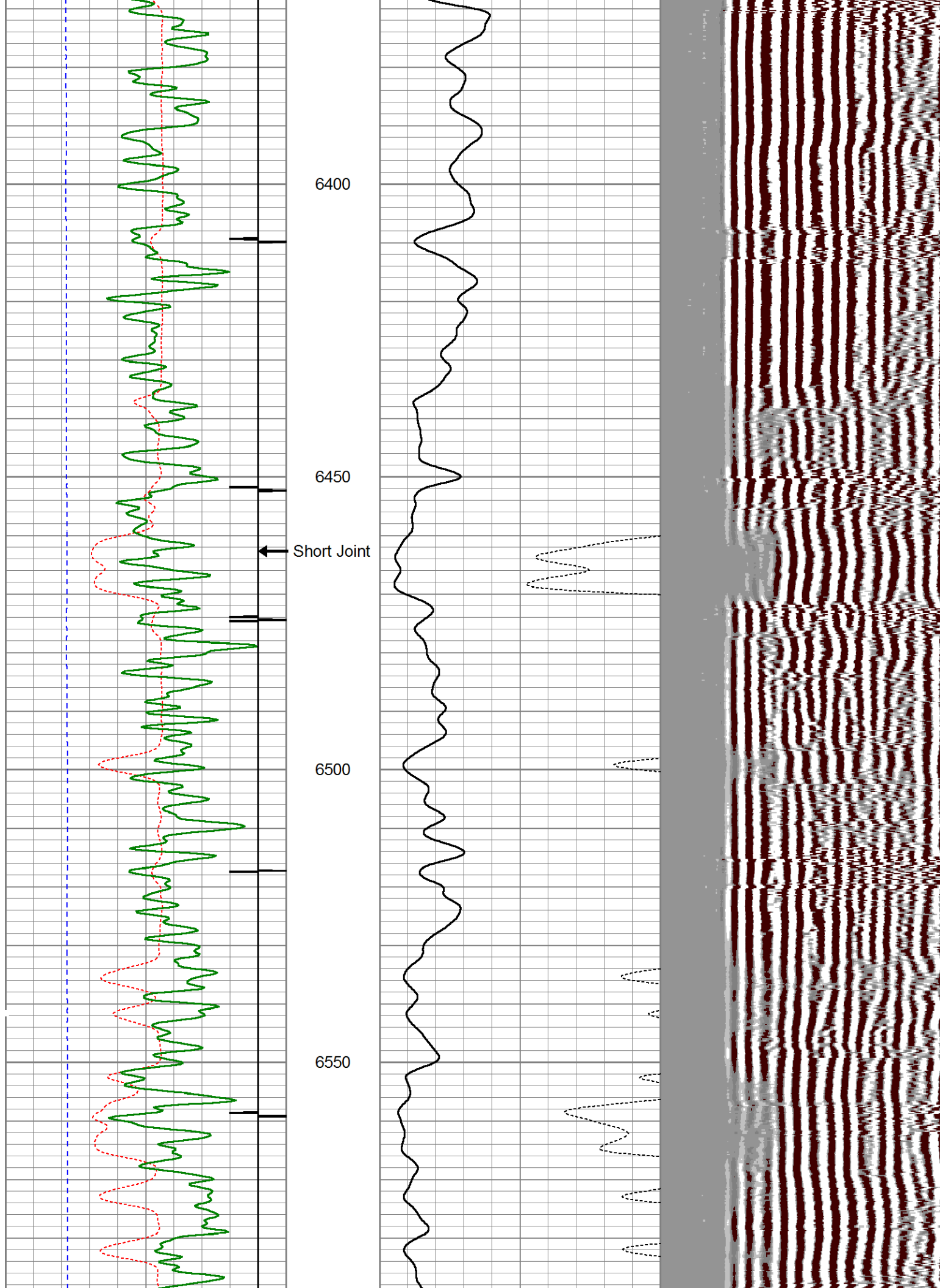
6200

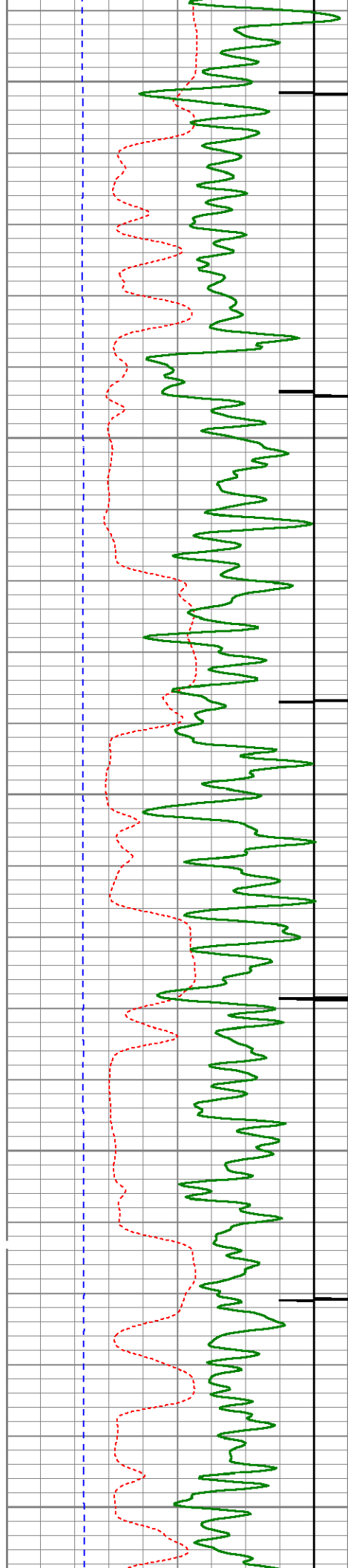
6250

6300

6350







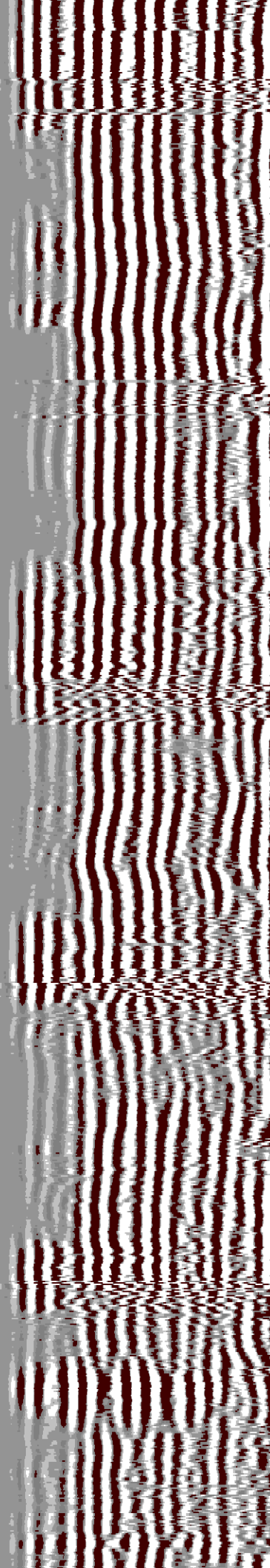
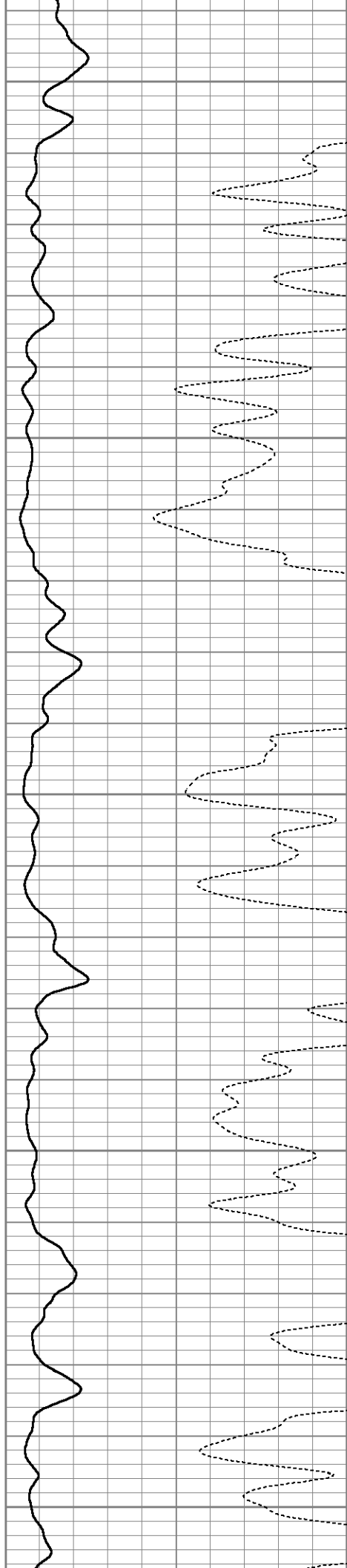
6600

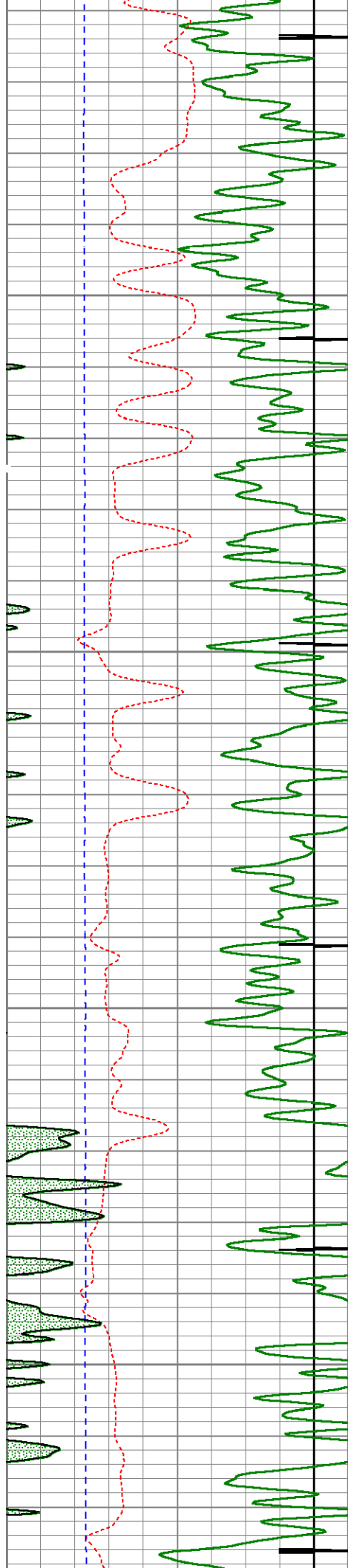
6650

6700

6750

6800



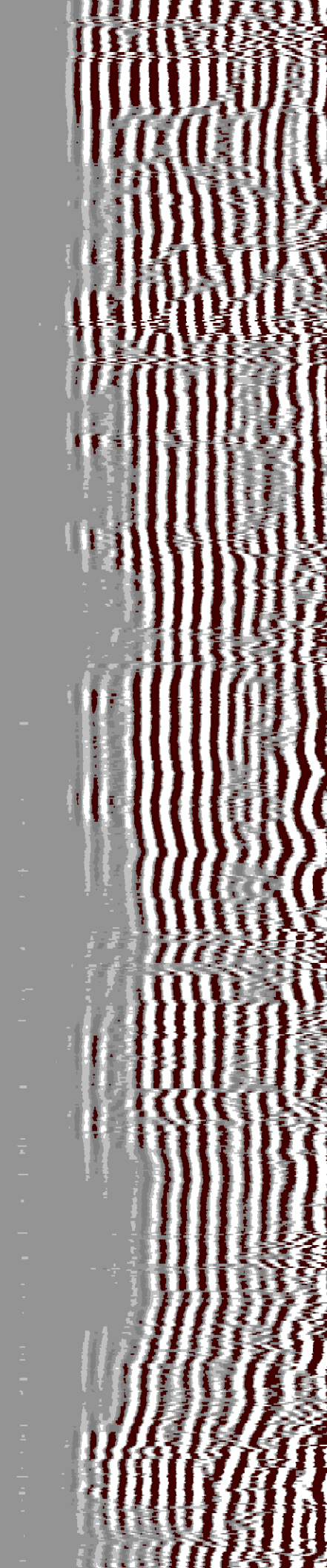
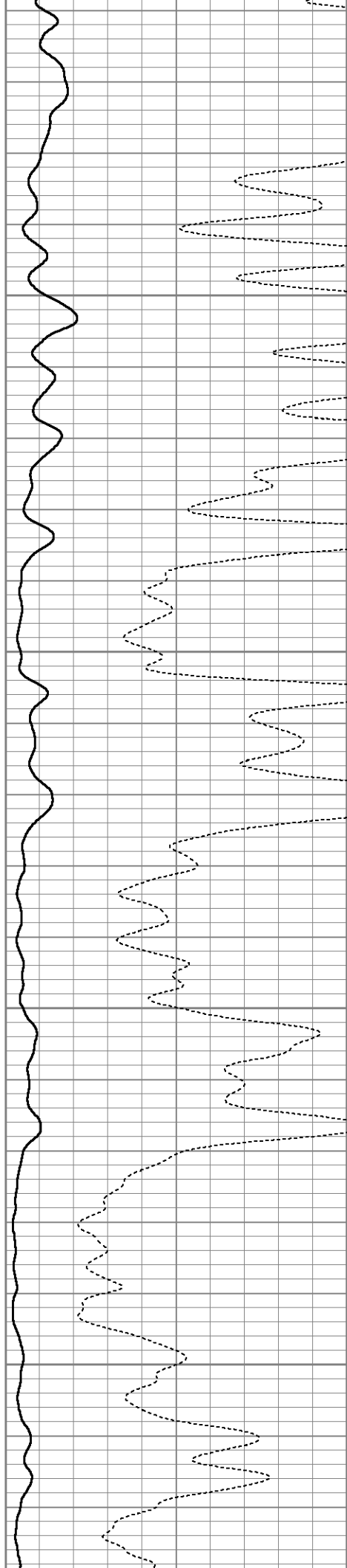


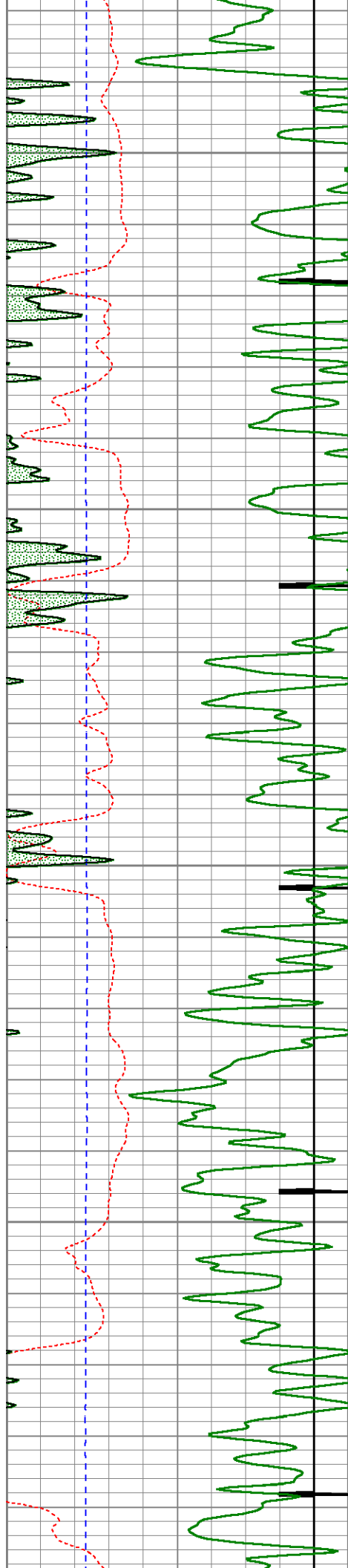
6850

6900

6950

7000



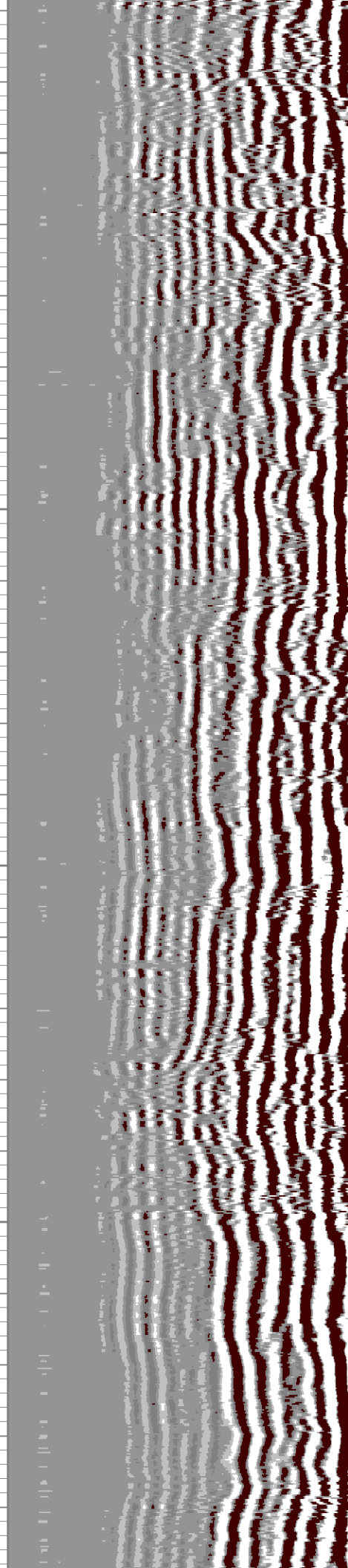
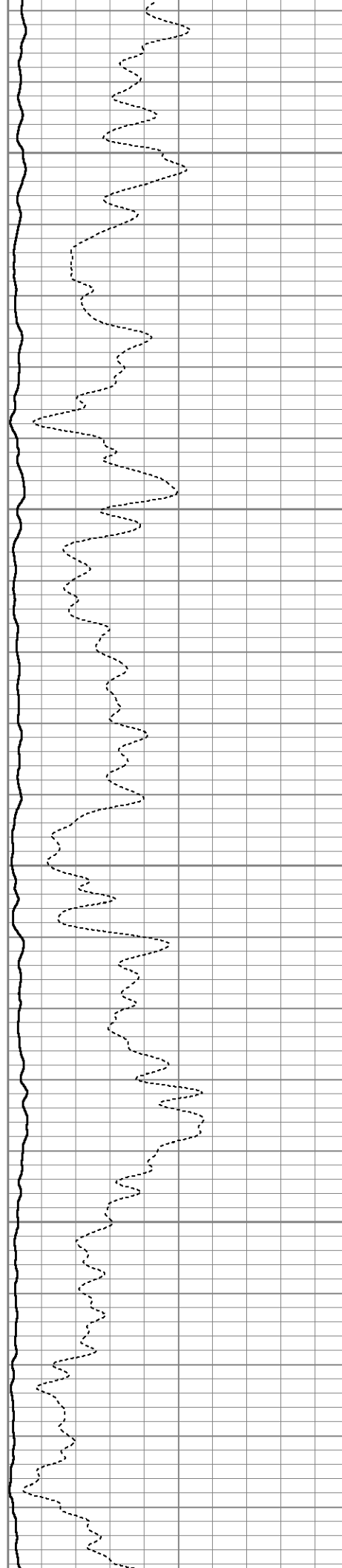


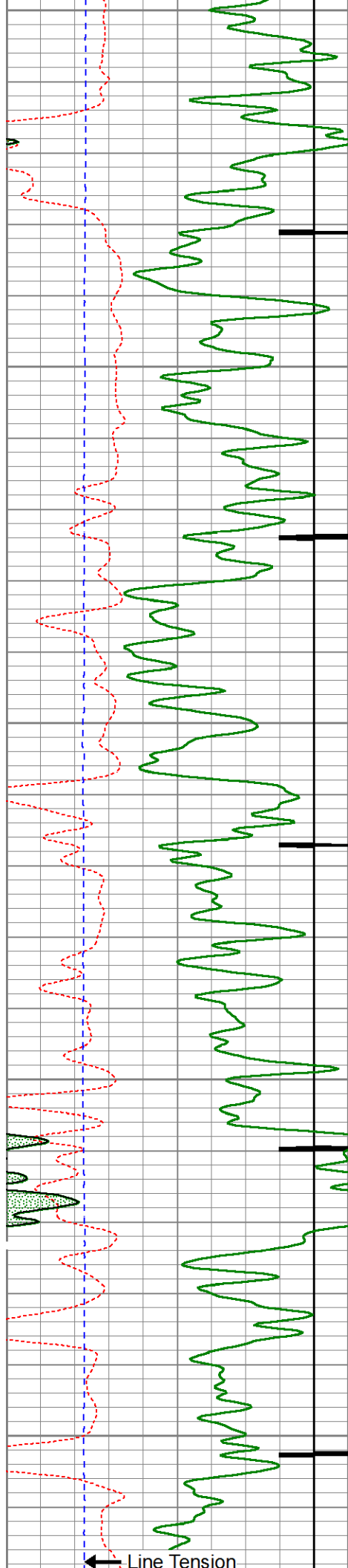
7050

7100

7150

7200





7250

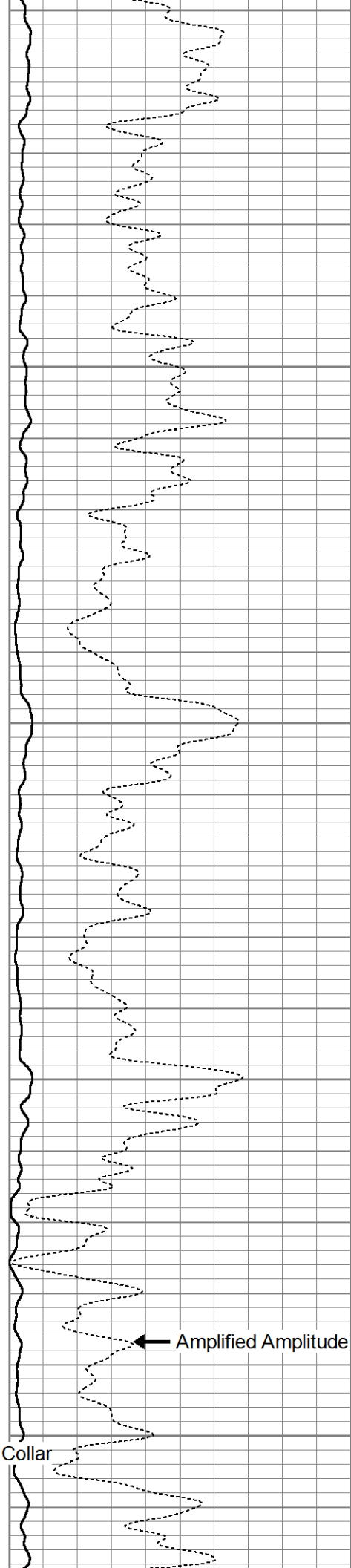
7300

7350

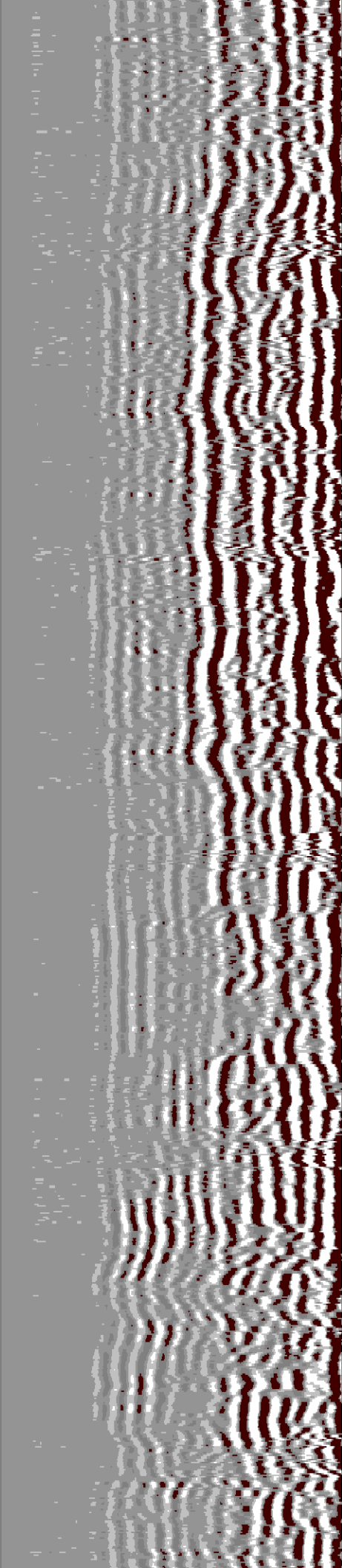
7400

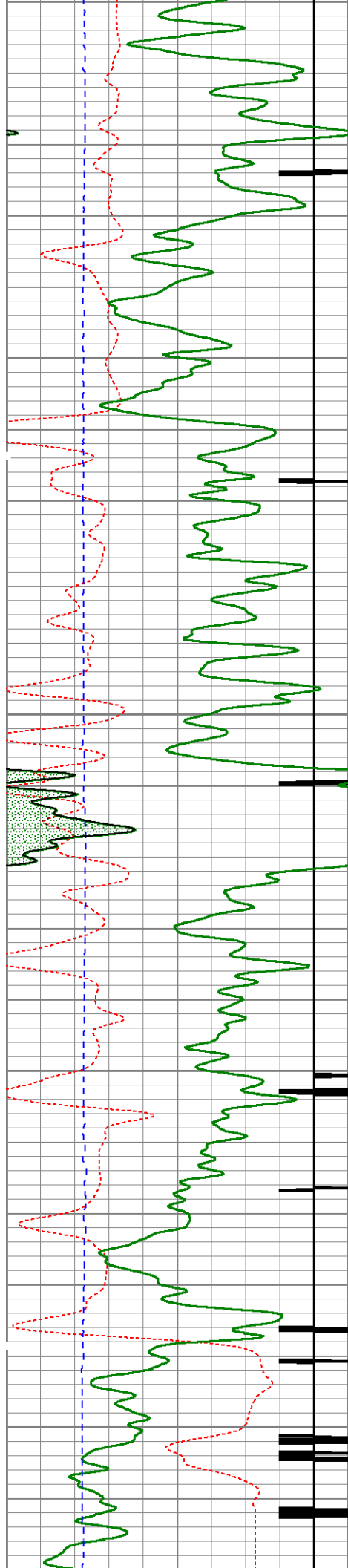
7450
Casing Collar

Line Tension



Amplified Amplitude





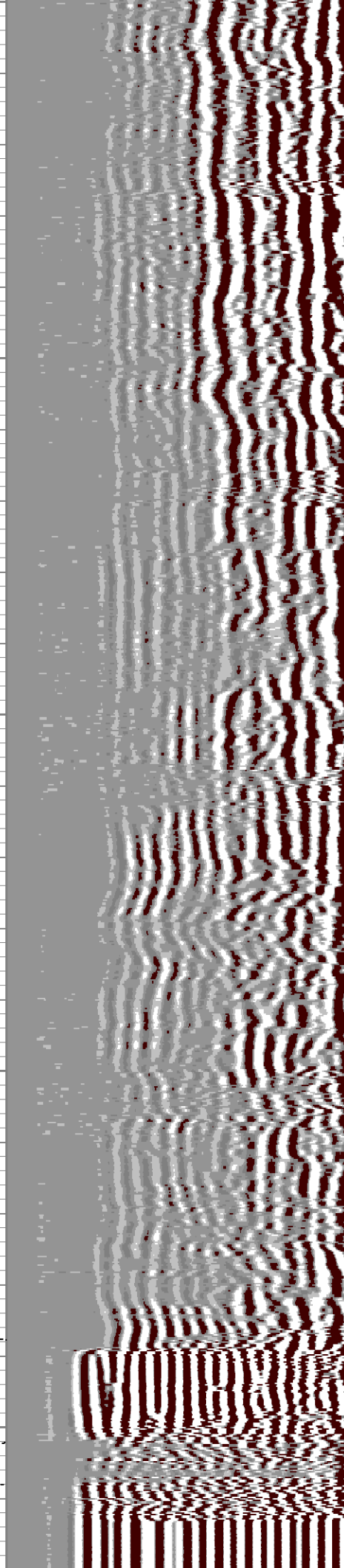
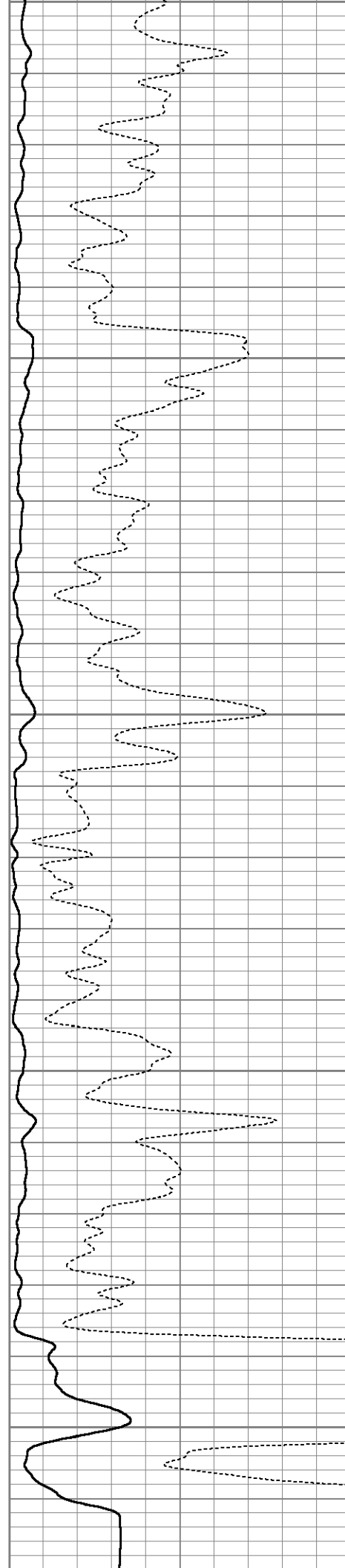
7300

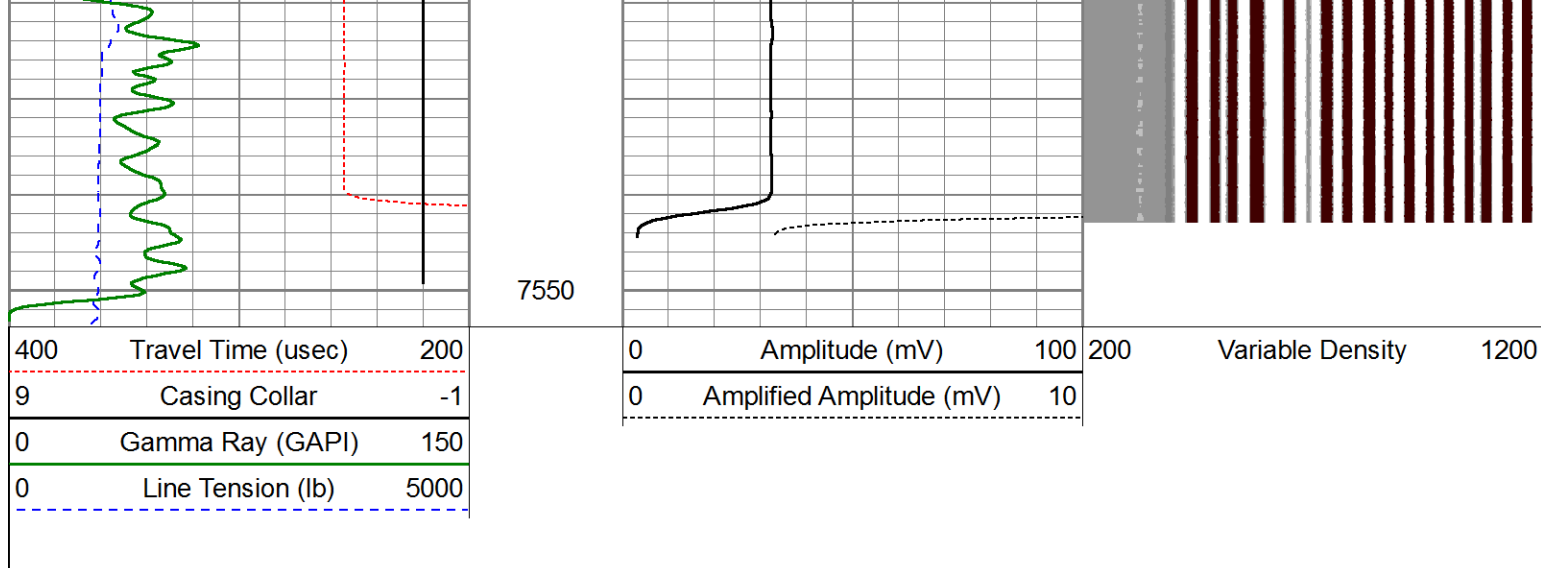
7350

7400

7450

7500





Calibration Report						
Database File:	C:\Warrior\Data\Cased Hole\Tekton\Pavistma South #2_CBL\tekton pavistma south #2_cbl.db					
Dataset Pathname:	pass6					
Dataset Creation:	Thu Oct 24 16:37:18 2013 by Log 0					
Gamma Ray Calibration Report						
Serial Number:	110108-Dig					
Tool Model:	Probe275					
Performed:	Mon Jul 01 16:56:15 2013					
Calibrator Value:	1.0		GAPI			
Background Reading:	0.0		cps			
Calibrator Reading:	1.0		cps			
Sensitivity:	0.8500		GAPI/cps			
Temperature Calibration Report						
Serial Number:	110108-Dig					
Tool Model:	Probe275					
Performed:	Sun Jun 13 13:33:21 1993					
	Reference		Reading			
Low Reference:	0.00	degF	0.00	cps		
High Reference:	1.00	degF	1.00	cps		
Gain:	1.00					
Offset:	0.00					
Delta Spacing	2					
Segmented Cement Bond Log Calibration Report						
Serial Number:	111107					
Tool Model:	Probe					
Calibration Casing Diameter:	7.000		in			
Calibration Depth:	4575.167		ft			
Master Calibration, performed Thu Oct 24 16:20:06 2013:						
Raw (v)		Calibrated (mv)		Results		
Zero	Cal	Zero	Cal	Gain	Offset	

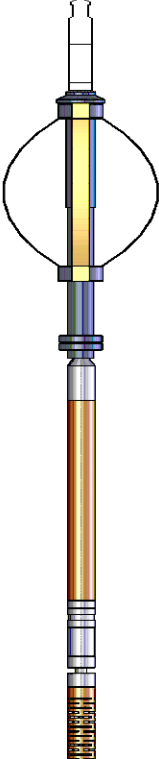
3'	-0.024	0.619	1.000	62.165	95.037	3.299
CAL	-0.035	1.012				
5'	-0.021	0.508	1.000	62.165	115.781	3.384
SUM						
S1	-0.015	0.667	0.000	100.000	146.492	2.257
S2	-0.010	0.690	0.000	100.000	142.974	1.398
S3	-0.019	0.673	0.000	100.000	144.324	2.801
S4	-0.017	0.648	0.000	100.000	150.417	2.585
S5	-0.018	0.614	0.000	100.000	158.379	2.772
S6	-0.018	0.595	0.000	100.000	163.012	2.929
S7	-0.019	0.579	0.000	100.000	167.180	3.169
S8	-0.019	0.559	0.000	100.000	173.020	3.212

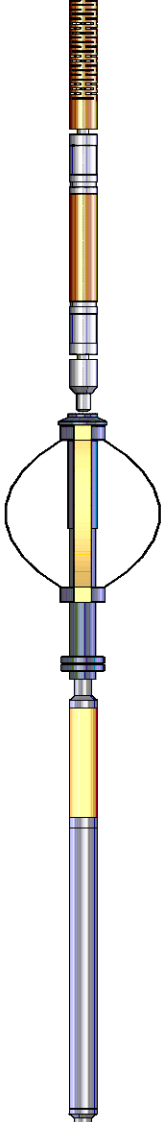
Internal Reference Calibration, performed Wed Dec 31 17:00:00 1969:

	Raw (v)		Calibrated (v)		Results	
	Zero	Cal	Zero	Cal	Gain	Offset
CAL	0.000	0.000	-0.035	1.012	1.000	0.000

Air Zero Calibration, performed Thu Oct 17 08:50:08 2013:

	Raw (v)		Calibrated (v)		Results
	Zero		Zero		Offset
3'	0.000		0.000		0.000
5'	0.000		0.000		0.000
SUM					
S1	0.000		0.000		0.000
S2	0.000		0.000		0.000
S3	0.000		0.000		0.000
S4	0.000		0.000		0.000
S5	0.000		0.000		0.000
S6	0.000		0.000		0.000
S7	0.000		0.000		0.000
S8	0.000		0.000		0.000

Sensor	Offset (ft)	Schematic	Description	Len (ft)	OD (in)	Wt (lb)
			Titan Cable_head	1.00	1.44	10.00
			Probe275 2.75" Centralizer	2.88	2.75	20.00
			Probe275 2.75" Centralizer	2.88	2.75	20.00

WVF3FT	11.84		RB1-Probe (111107) Probe Radii Bond Tool with Digital Telemetry	8.75	2.75	90.00
WVFCAL	11.84					
WVFS1	11.84					
WVFS2	11.84					
WVFS3	11.84					
WVFS4	11.84					
WVFS5	11.84					
WVFS6	11.84					
WVFS7	11.84					
WVFS8	11.84					
WVF5FT	10.84					
			Probe275 2.75" Centralizer	2.88	2.75	20.00
CCL	3.88					
TEMP	3.00					
GR	2.54		GR-Probe275 (110108-Dig) Probe 2 3/4" Logging Gamma Ray	4.78	2.75	57.00
Dataset: tekton pavistma south #2_cbl.db: field/well/run1/pass6 Total Length: 20.28 ft Total Weight: 197.00 lb O.D.: 2.75 in						