



RESISTIVITY  
GAMMA-RAY  
CONDUCTIVITY

5" = 100'  
FEET MD

COMPANY : TEKTON WINDSOR LLC WELL : PAVISTMA SOUTH #1 FIELD : WATTENBERG COUNTY : WELD STATE : CO COUNTRY : U.S.A. API No.: 05-123-37703										COMPANY : TEKTON WINDSOR LLC WELL : PAVISTMA SOUTH #1 FIELD : WATTENBERG COUNTY : WELD STATE : CO COUNTRY : U.S.A. API WELL No.: 05-123-37703																			
DEPTH REF. : ROTARY TABLE ELEVATION : 22.50 ft (ROTARY TABLE - MEAN SEA LEVEL) ALTITUDE : 4954.00 ft (GROUND LEVEL - MEAN SEA LEVEL)										WELL LOCATION LAT:40°26'.26"N LON:104°55'.29"W X:3,160,105' Y:1,403,845' NAD83 SEC: 32 TWP: 06N RANGE: 67W										OTHER SERVICES DIRECTIONAL ROP									
BOREHOLE RECORD															DEVIATION RECORD														
HOLE SIZE in					FROM ft					TO ft					INCLINATION deg					FROM ft					TO ft				
8 3/4					872					7545					00 - 04					0					1927				
6 1/8					7545					11775					04 - 11					1927					2391				
															11 +/-1					2391					3894				
															11 - 01					3894					4834				
															01 - 01					4834					5967				
															01 - 96					5967					7783				
															96 - 89					7783					8066				
															89 +/-2					8066					11775				
CASING SIZE in					FROM ft					TO ft																			
9 5/8					0					872																			
7					0					7530																			
															DRILLING CO.: FRONTIER DRILLING RIG : 10 LMD UNIT No.: N/A DISTRICT : CASPER SPUD DATE : 21-AUG-13 LMD START DATE : 17-SEP-13 DEPTH : 7545 ft LMD END DATE : 21-SEP-13 DEPTH : 11775 ft TOTAL DEPTH : 11775 ft														

RUN DATA						
RUN NUMBER	2					
START DATE	17-SEP-13					
START TIME	15:00					
END DATE	21-SEP-13					
END TIME	05:00					
DEPTH IN ft	7545					
DEPTH OUT ft	11775					
LOG TOP ft	7530					
LOG BOTTOM ft	11742					
HOLE SIZE in	6 1/8					
MUD DATA @ ft	8450					
MUD TYPE	WATER BASED					
DENSITY lb/gal	9.20					
VISCOSITY s/qt	45					
pH	8.7					
FLUID LOSS cm3/30	6.0					
SALINITY mg/L	1100					
Rm ohmm @ deg F	@					
Rmf ohmm @ deg F	@					

REMARKS
TEKTON WINDSOR LLC.
PATHFINDER JOB #: 13CAS0201.
ALL LOGGING DATA IS MEMORY UNLESS STATED OTHERWISE.
ALL REFERENCES TO LOG TOP, LOG BOTTOM, OR LOGGING TOOL DEPTH REFER TO THE GAMMA-RAY SENSOR UNLESS STATED OTHERWISE. SENSOR OFFSETS FOR THE OTHER LOGGING TOOLS ARE SHOWN IN THE BHA REPORT ON THE LOG TRAILER.
ALL ANNOTATIONS IN THE DEPTH TRACK ARE REFERENCED TO BIT DEPTH.
THIRD PARTY DEPTH TRACKING SERVICES PROVIDED BY PASON.
RUN #1: 4 3/4" HDS-1L/GAMMA/AWR LOGGING RUN. NO LOGGING DATA ACQUIRED.
RUN #2: 4 3/4" HDS-1L/GAMMA/AWR LOGGING RUN.
RESISTIVITIES ARE CLAMPED (200 OHMM ATTENUATION AND 3000 OHMM PHASE) WHERE FORMATION RESISTIVITY IS BEYOND SENSOR LIMITATION.
REMARK #1: GAMMA-RAY LOGGED THROUGH CASING FROM 7490'-7530'MD (7101'-7105'TVD).
NOTICE - All interpretations are opinions based on inferences from electrical or other measurements and we do not guarantee the accuracy or correctness of any interpretations. We shall not, except in the case of gross or willful negligence on our part, be liable or responsible for loss, costs, damages or expenses incurred or sustained by anyone as a result of any interpretations made by one of our officers, agents or employees. These interpretations are also subject to our General Terms and Conditions as set out in our current Price Schedule.
PATHFINDER - A Schlumberger Company
Version No : RX5 V6.04D Release 13Dec2012
Plot Time : 21-Sep-2013 07:39

[illegible]

SEE REMARK #1

7500

7"  
CASING

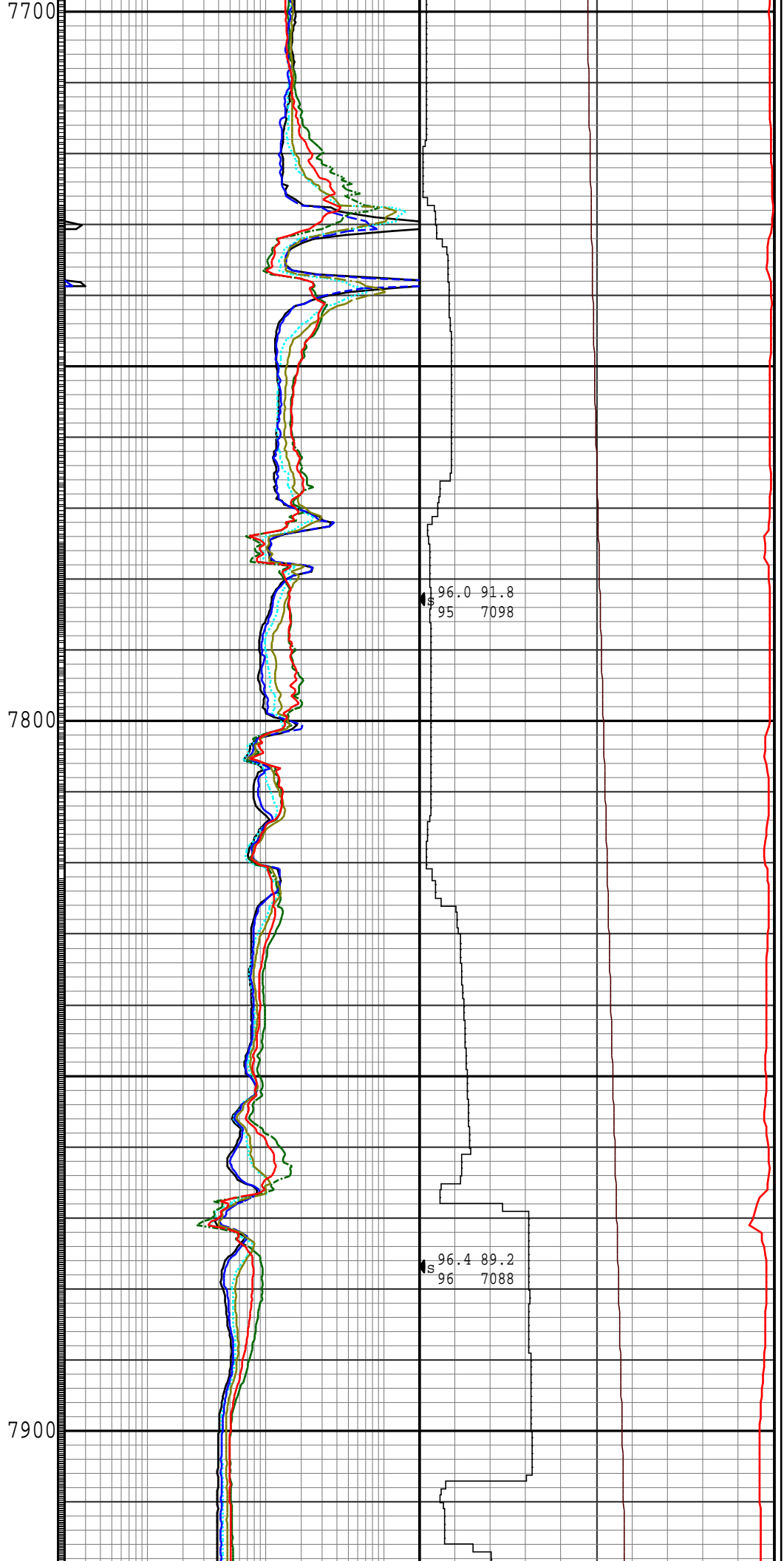
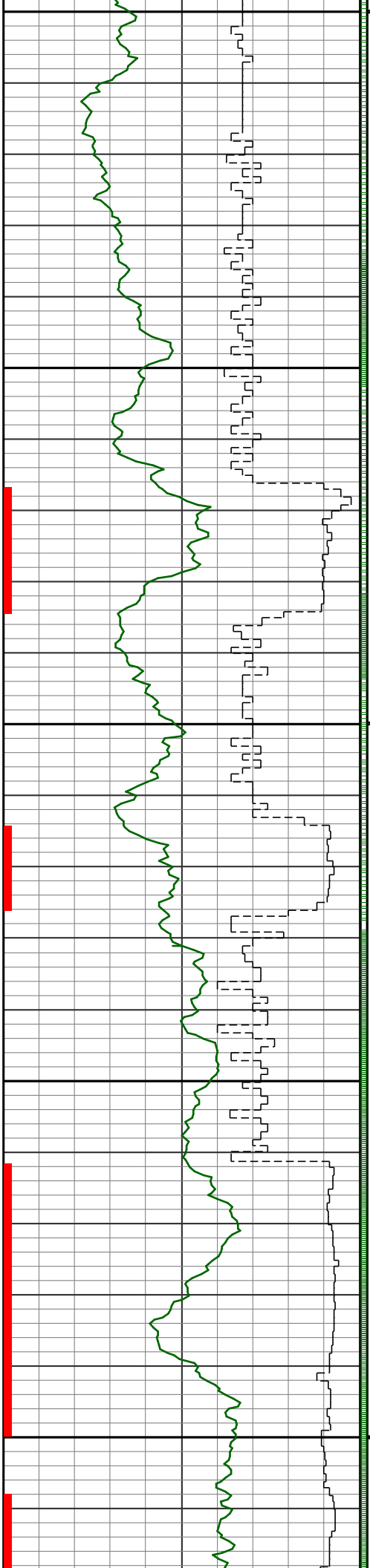
R  
U  
N  
#2

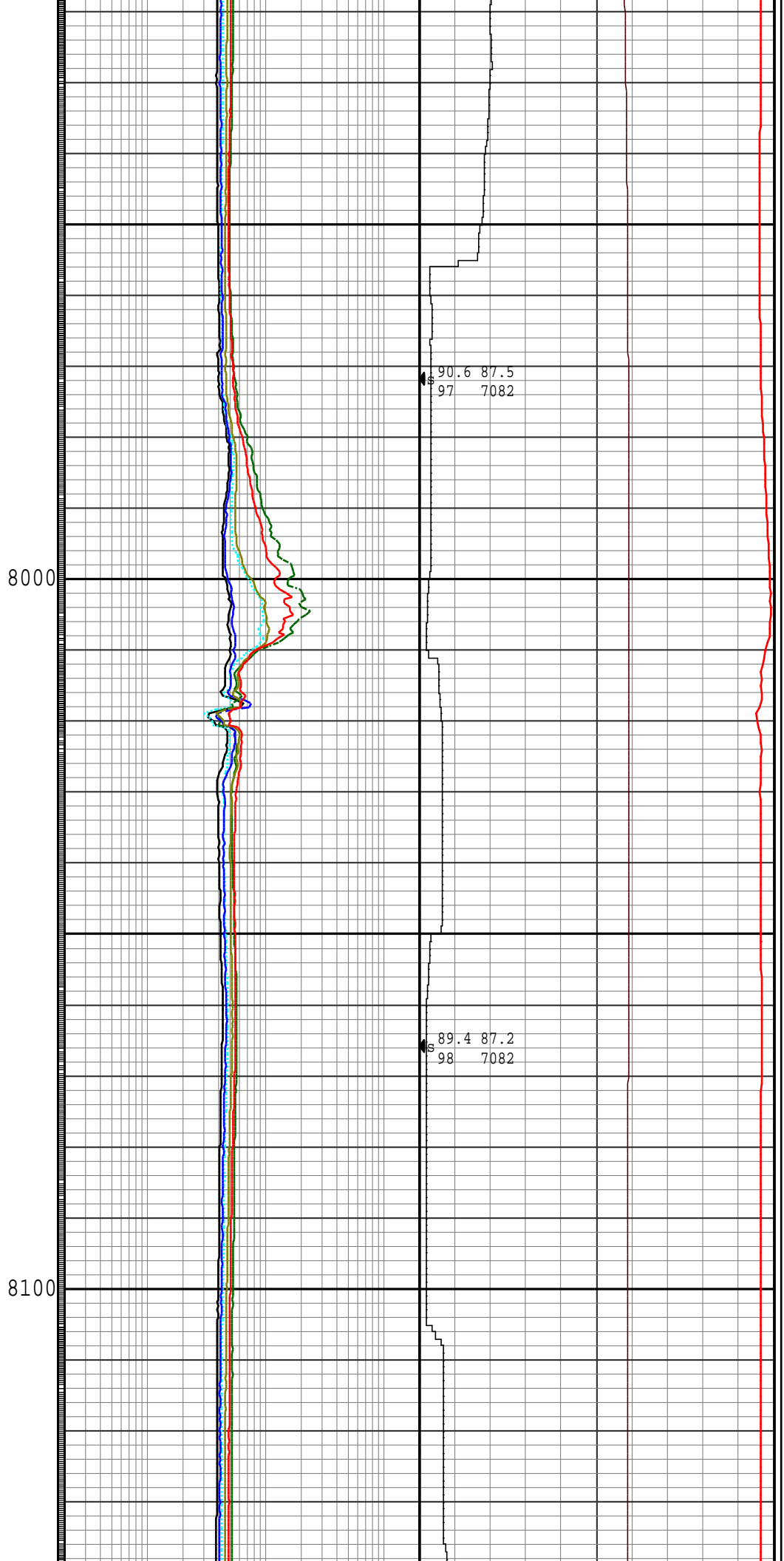
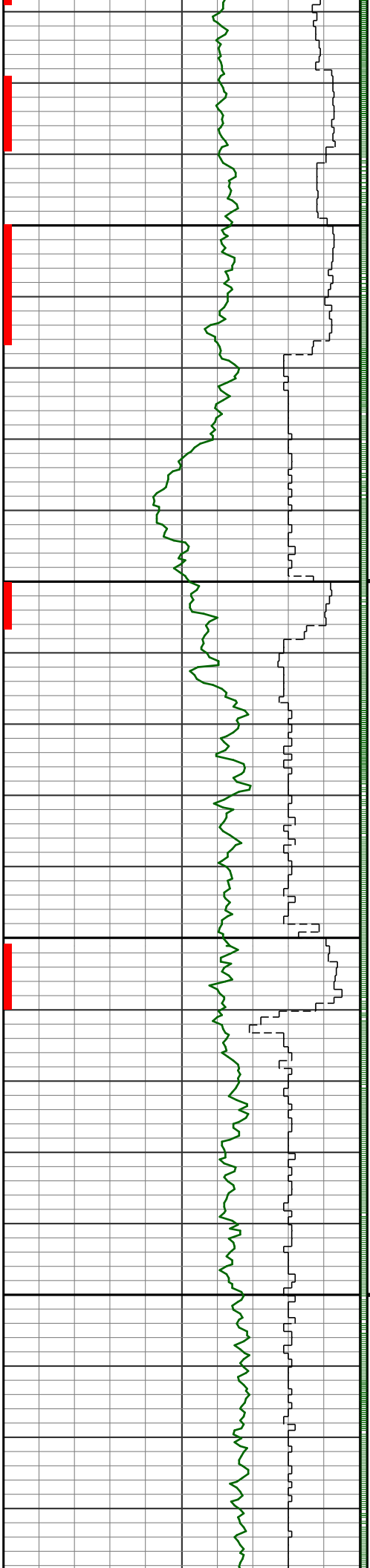
7600

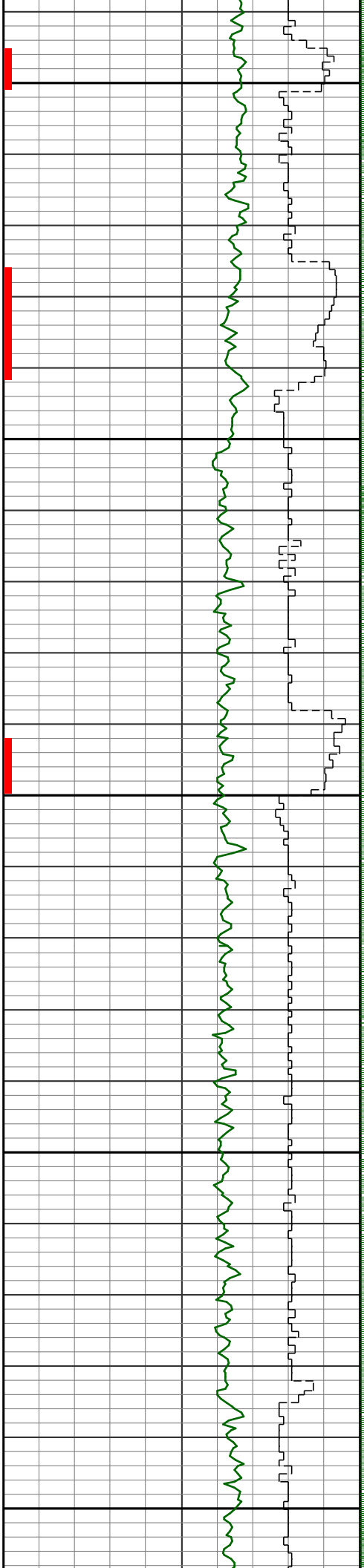
82.1 92.0  
92 7101

89.7 93.0  
93 7108

93.5 92.7  
94 7106

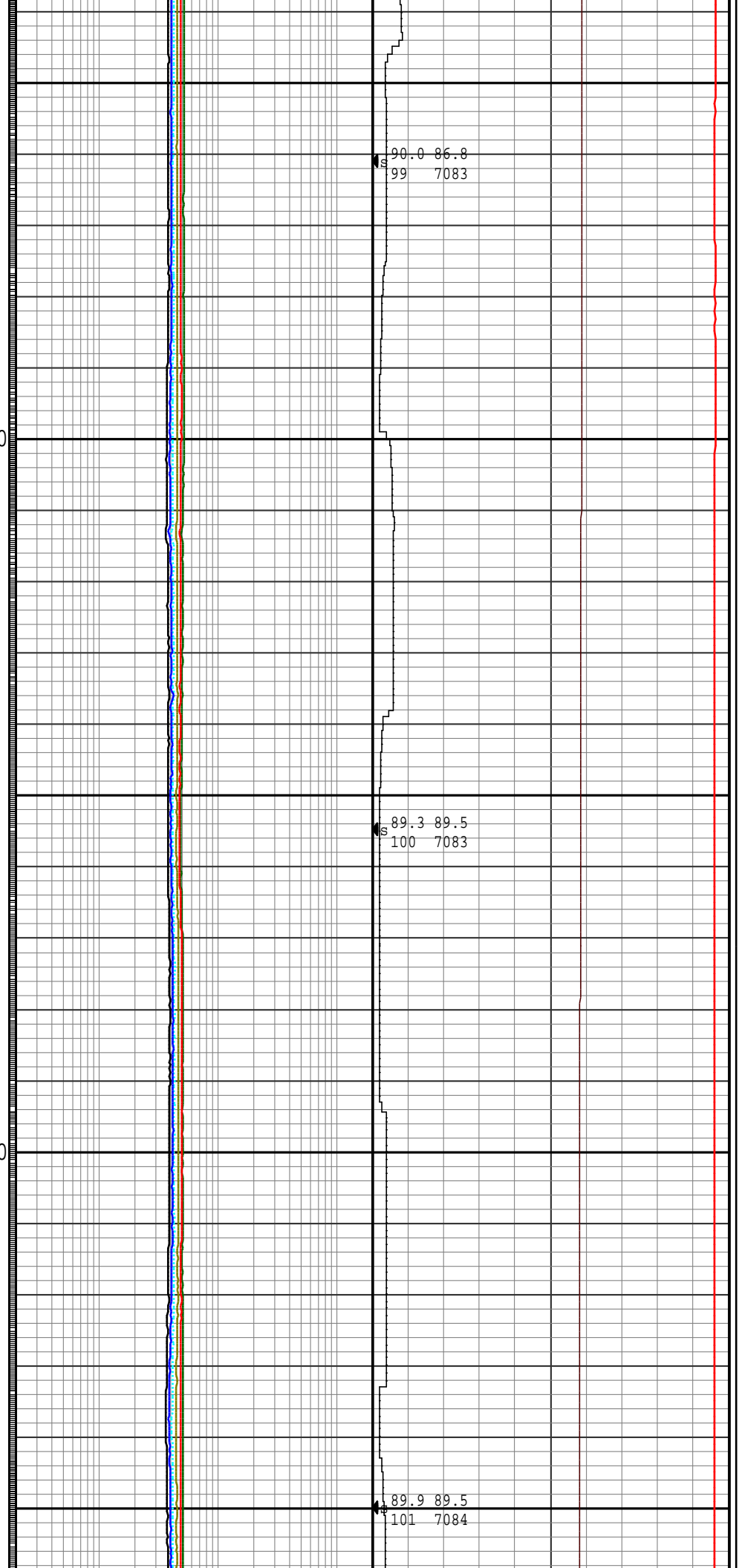






8200

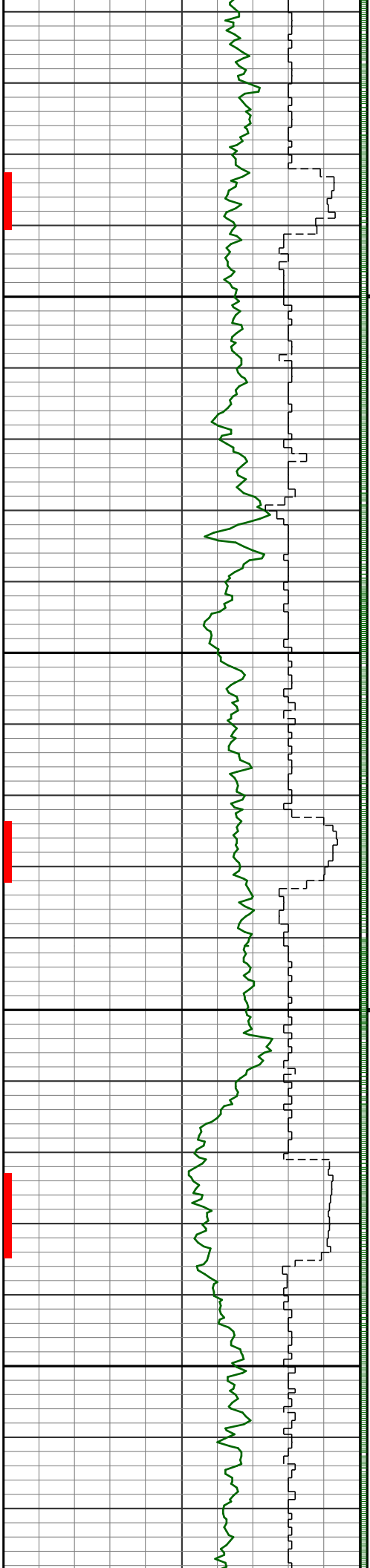
8300



90.0 86.8  
99 7083

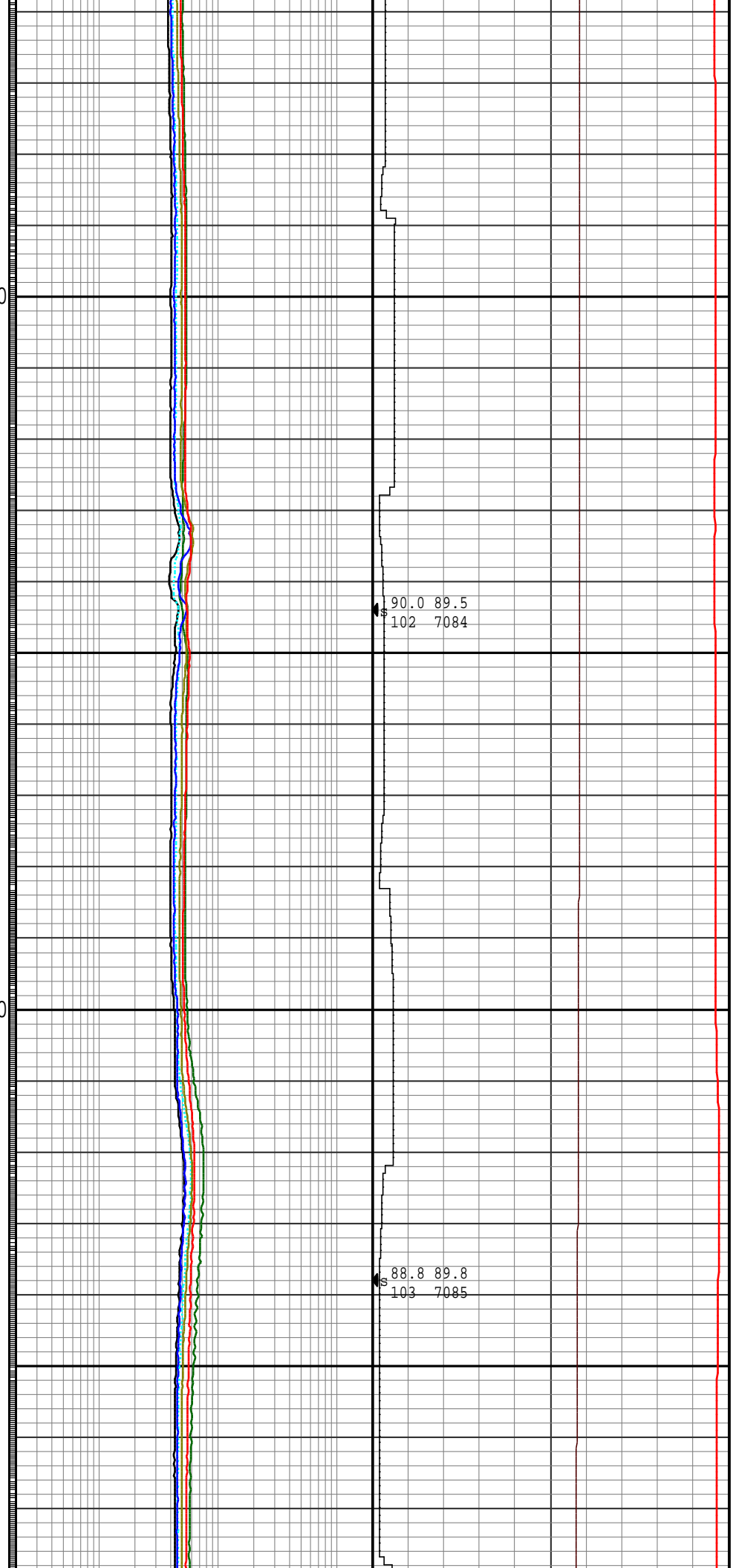
89.3 89.5  
100 7083

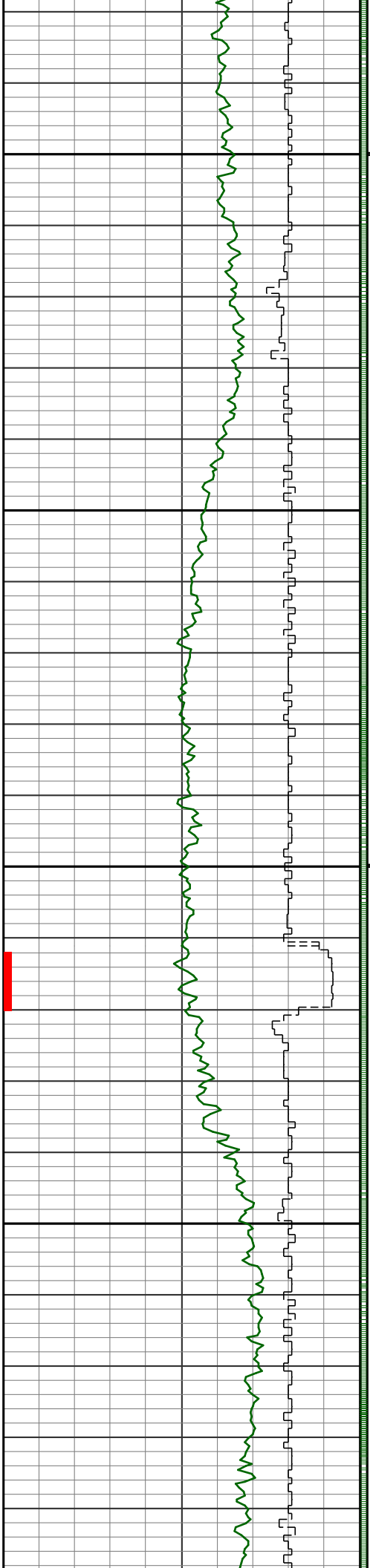
89.9 89.5  
101 7084



8400

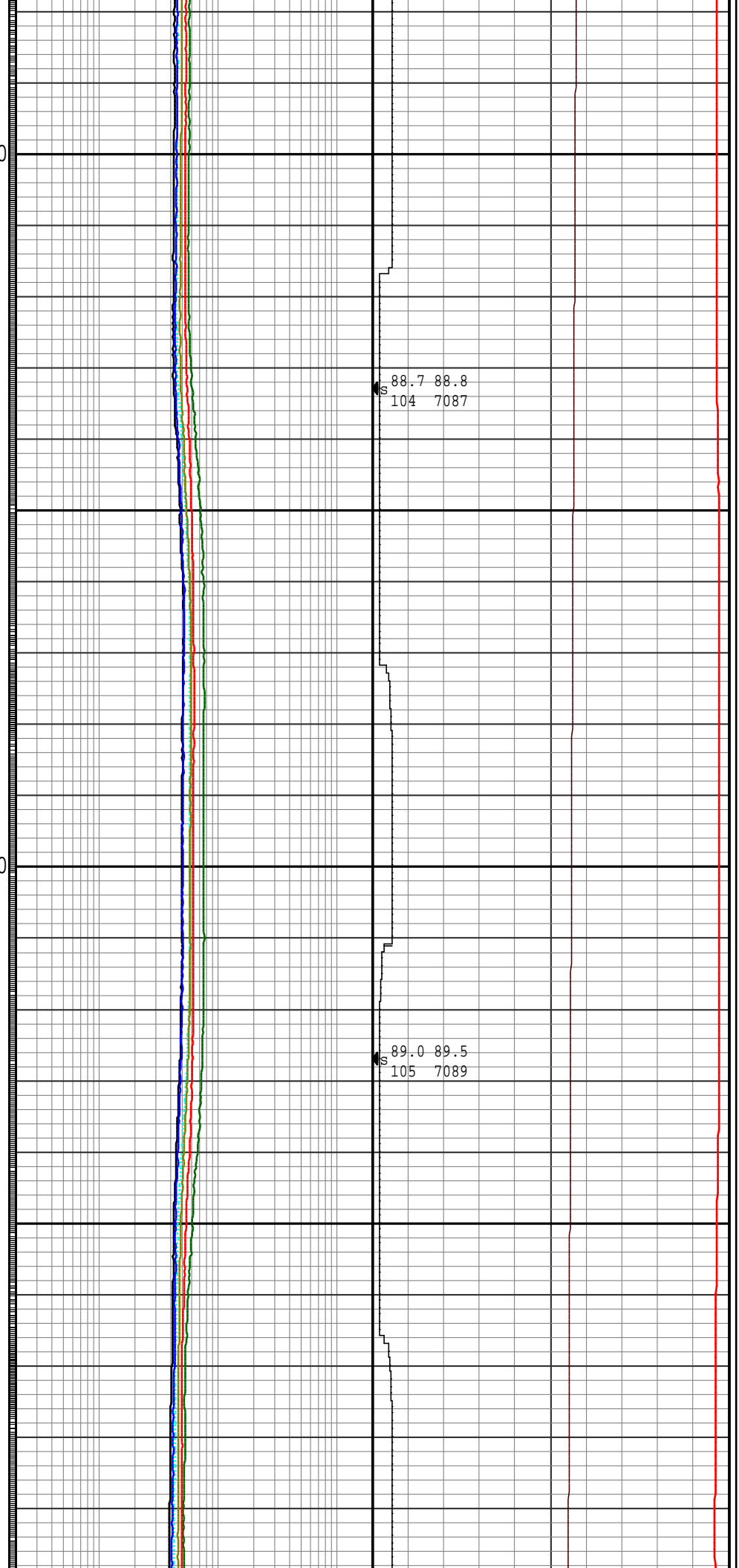
8500



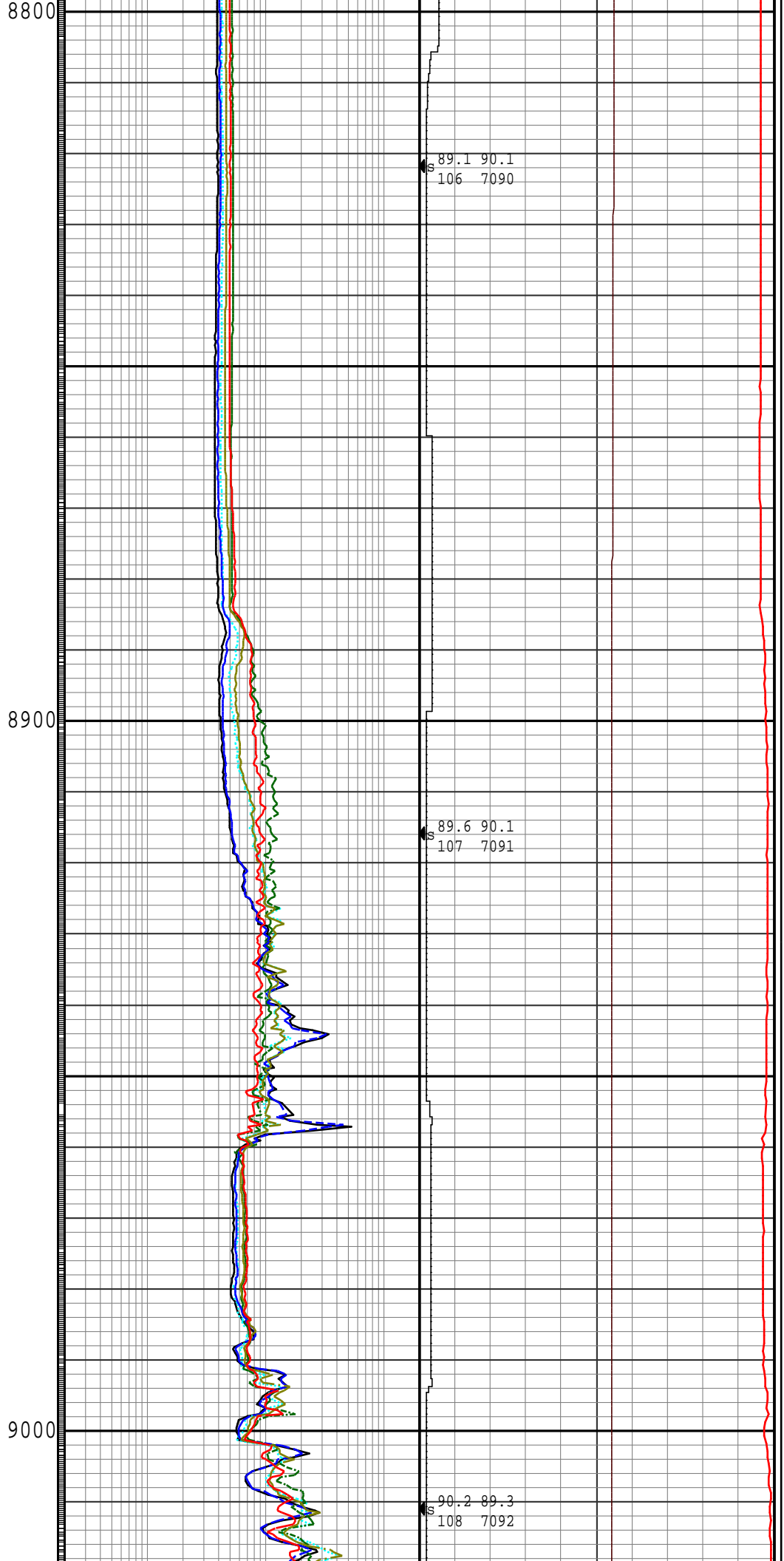
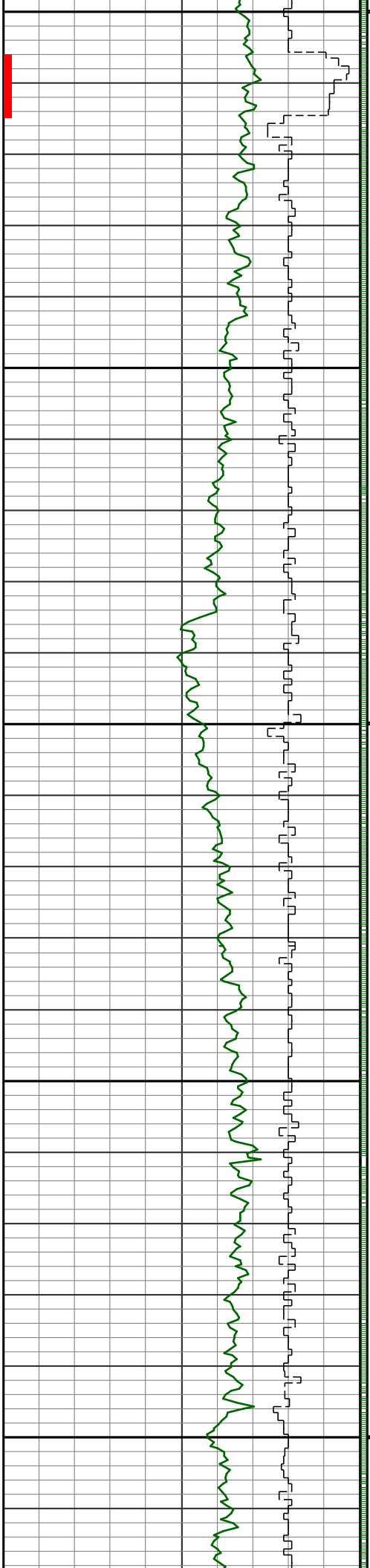


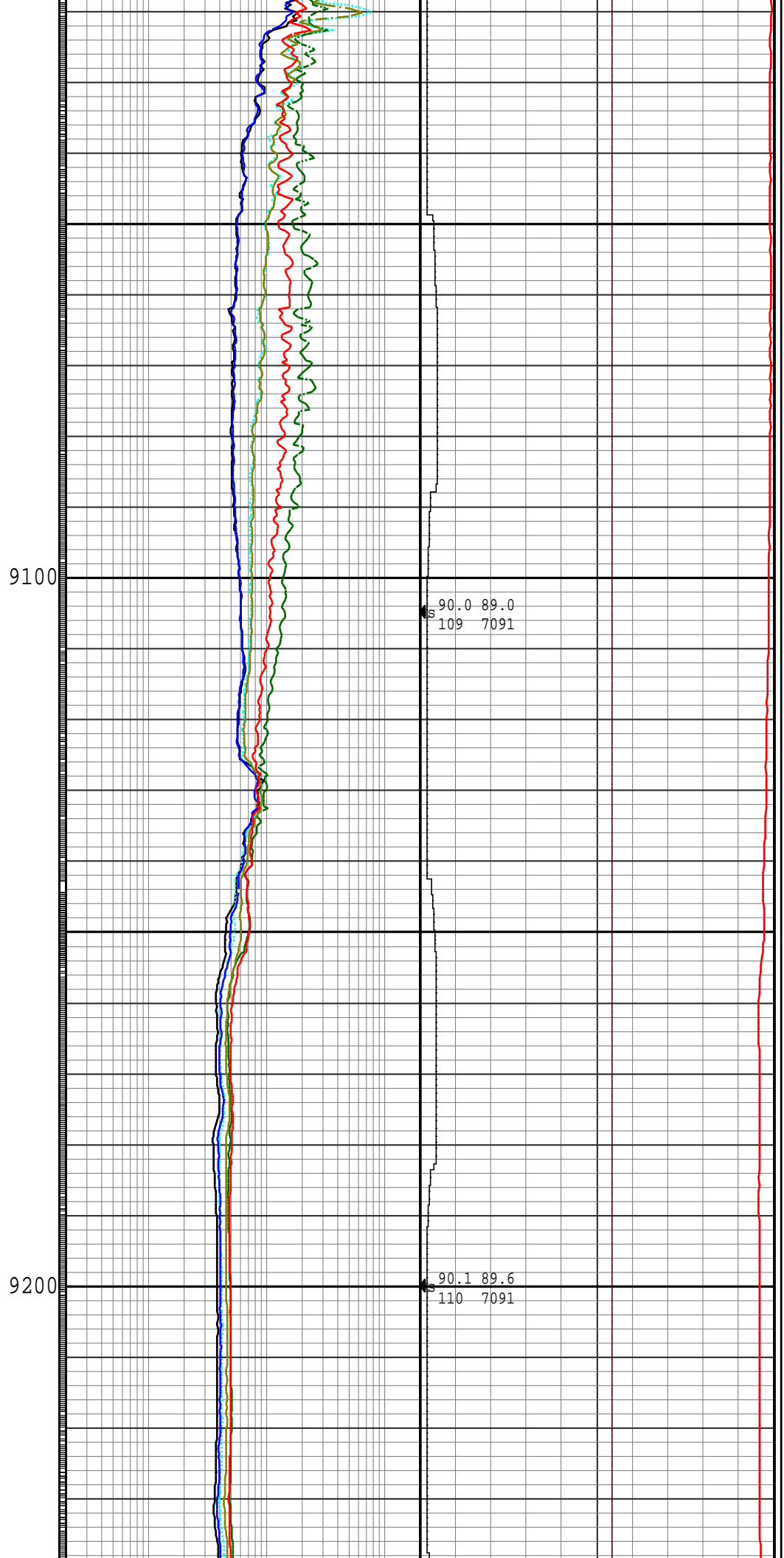
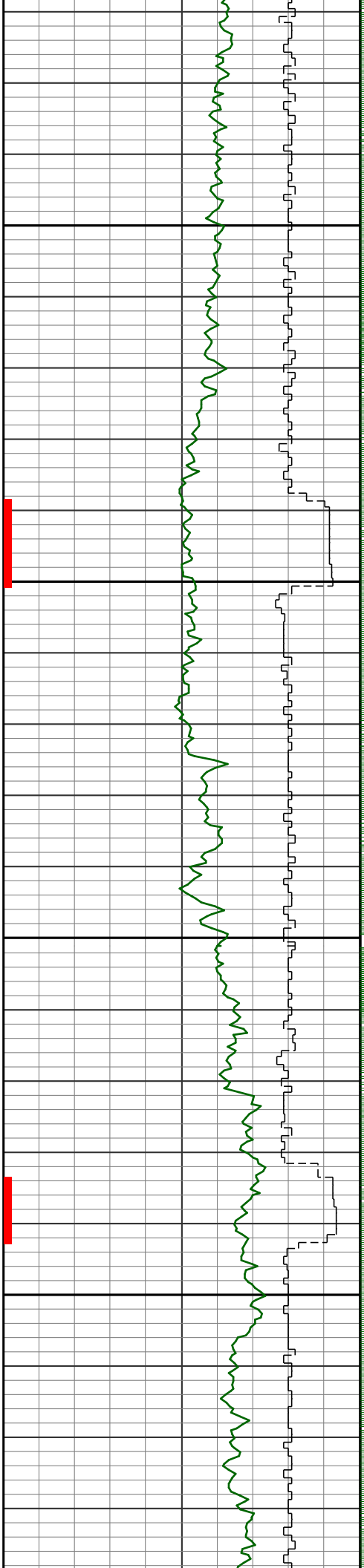
8600

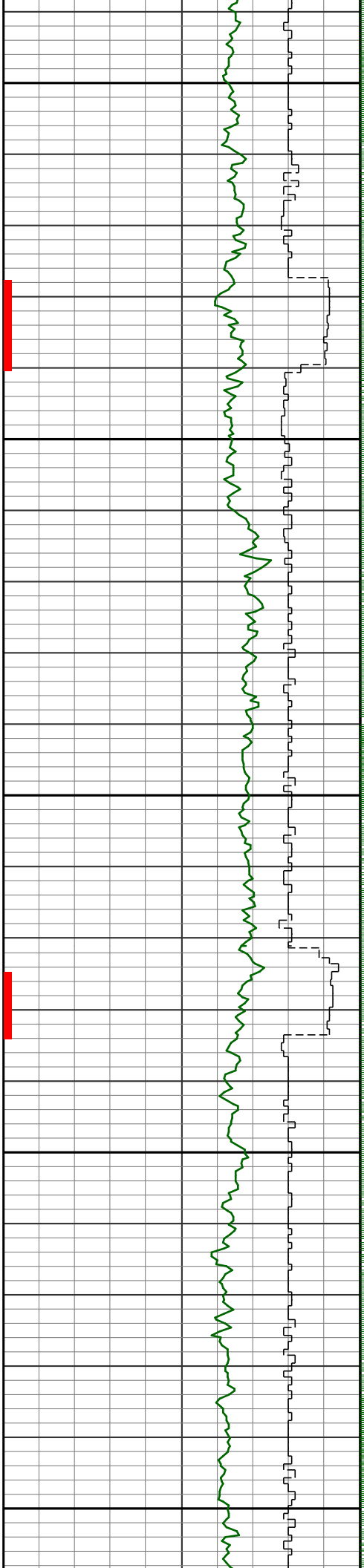
8700



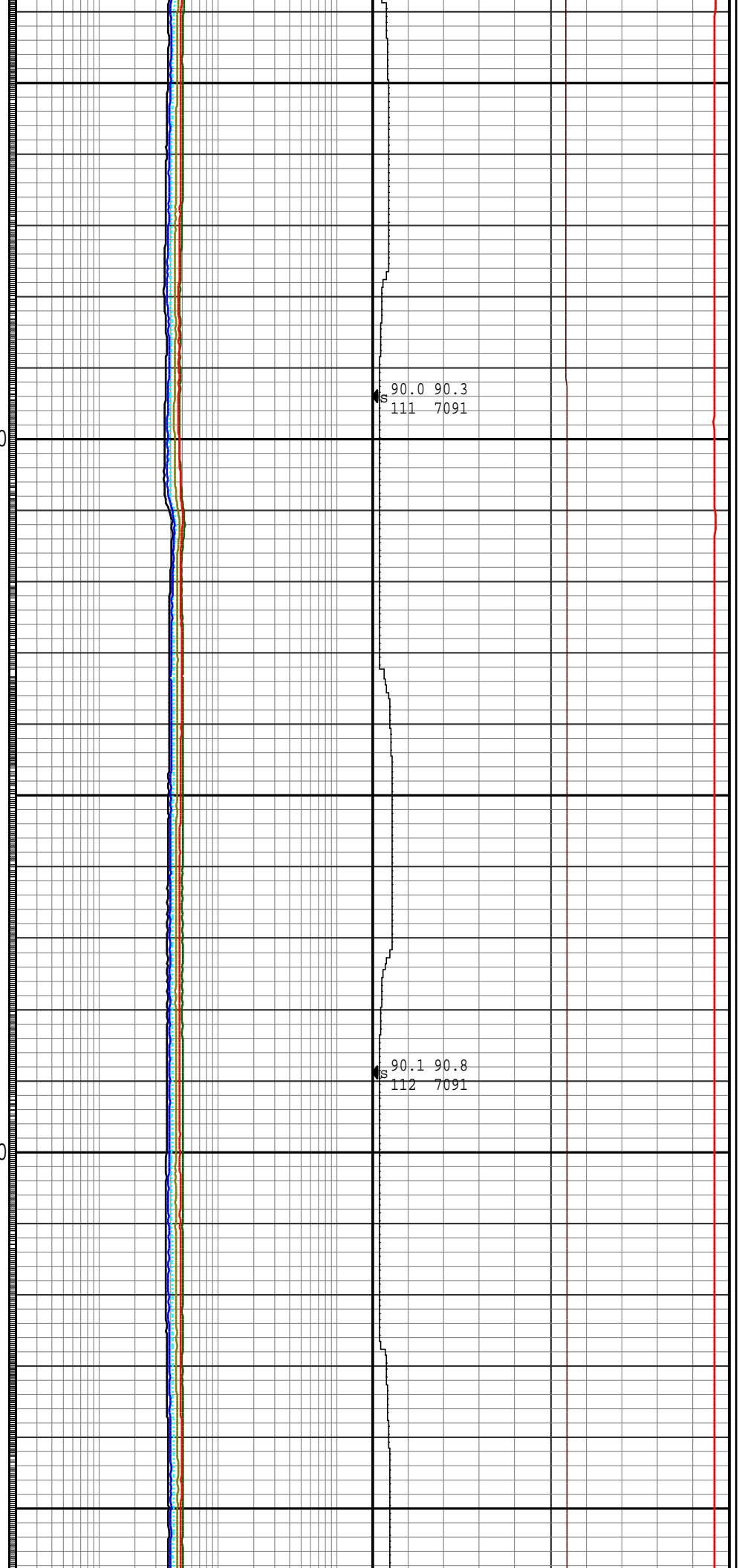


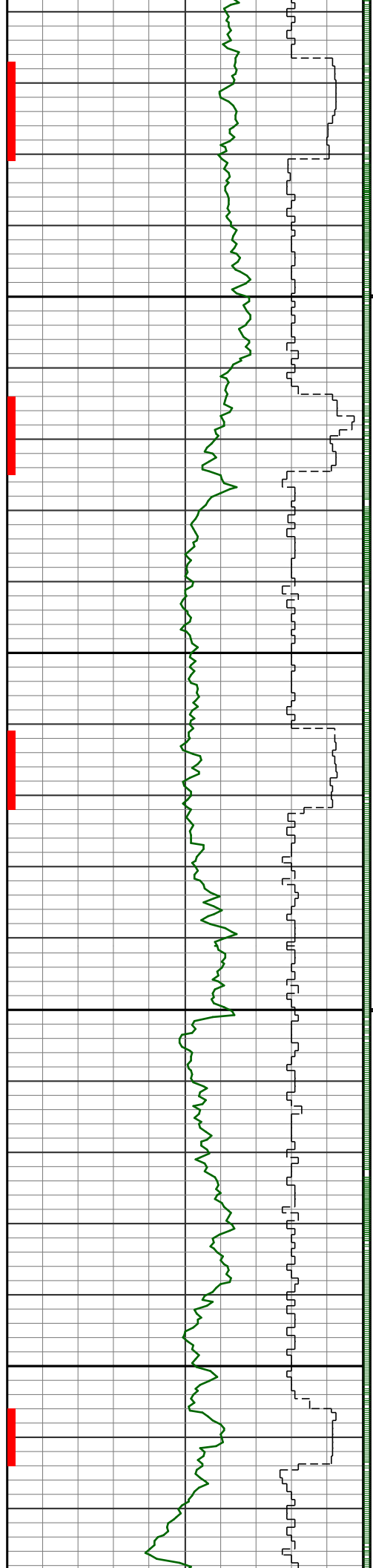






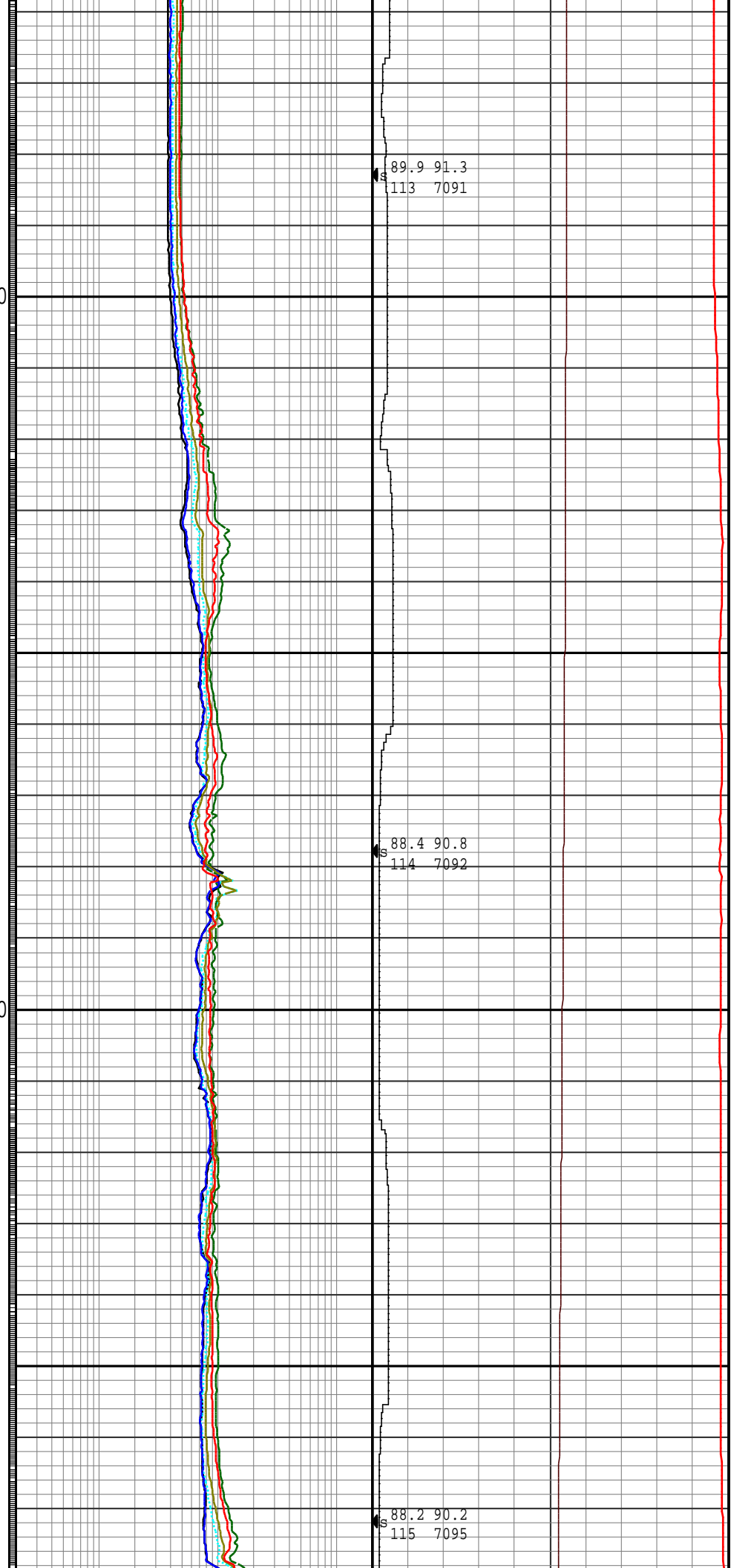
9300

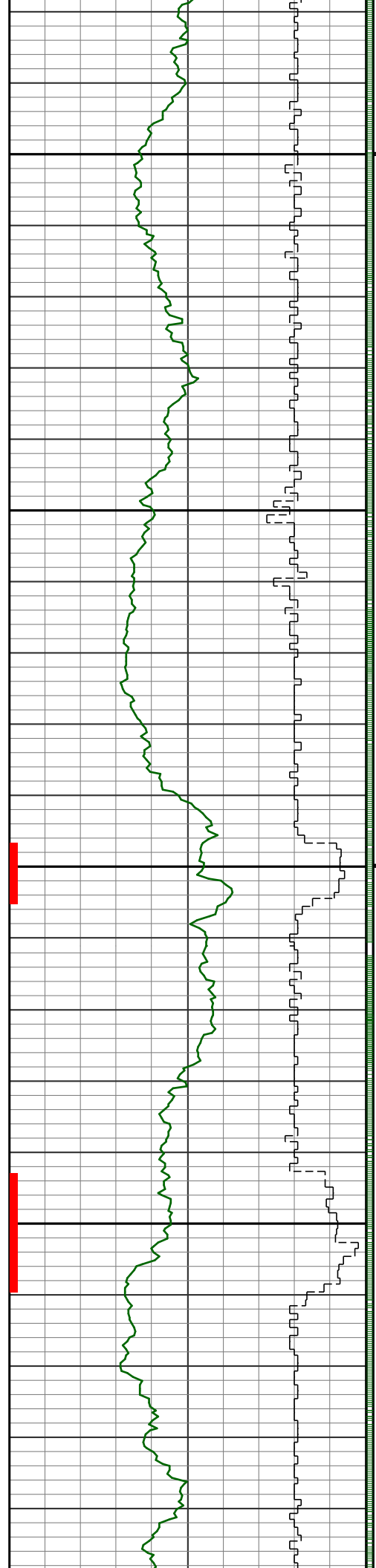




9500

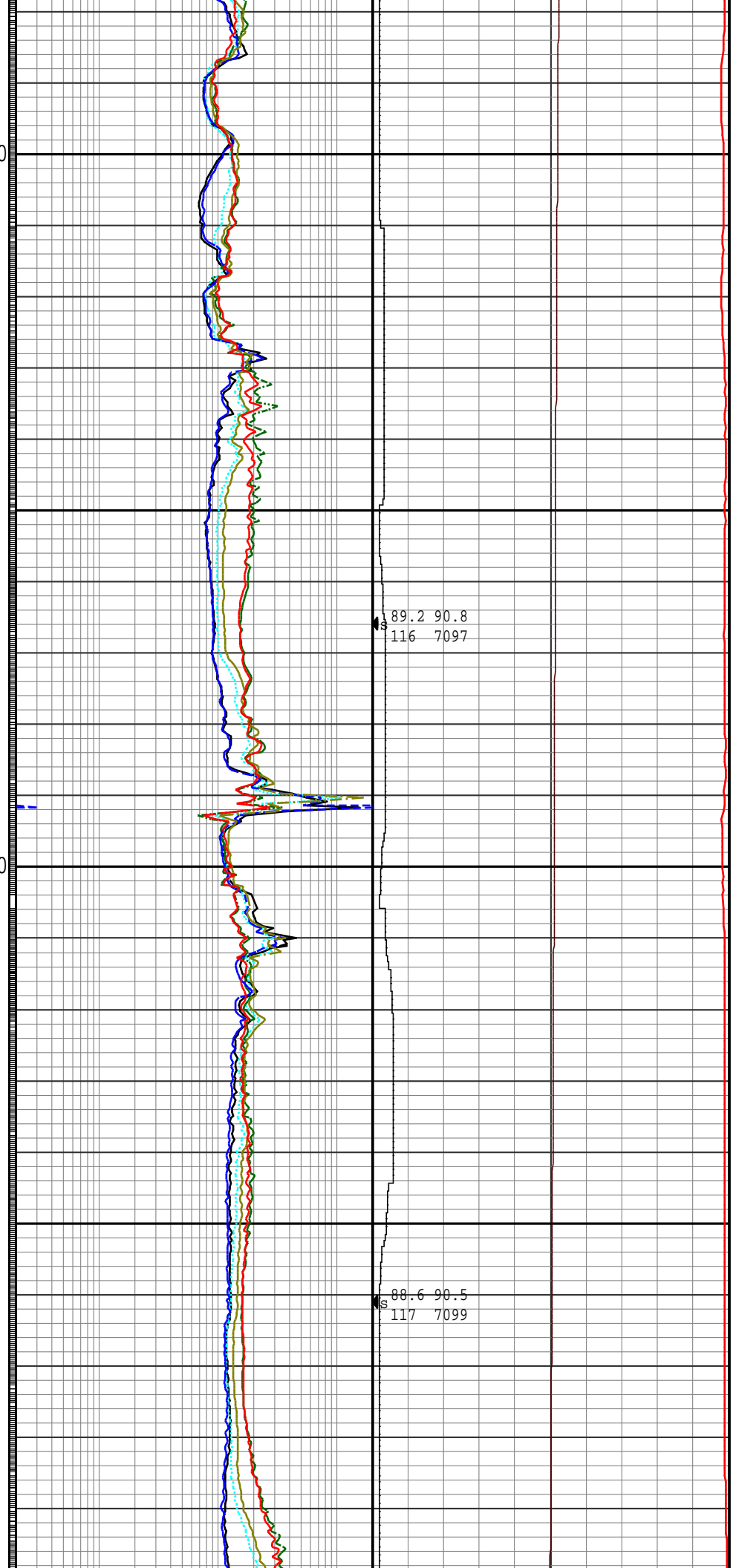
9600

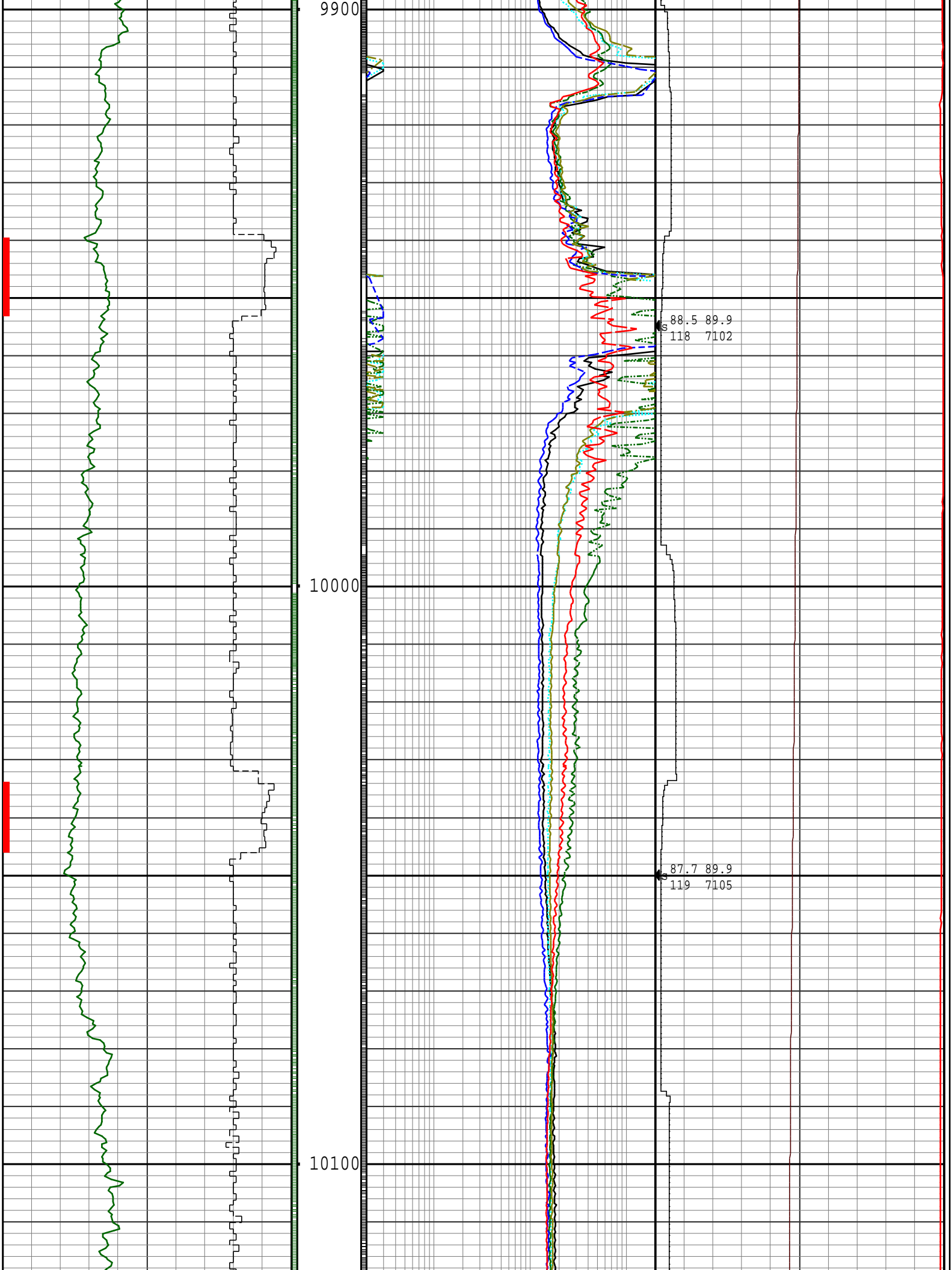


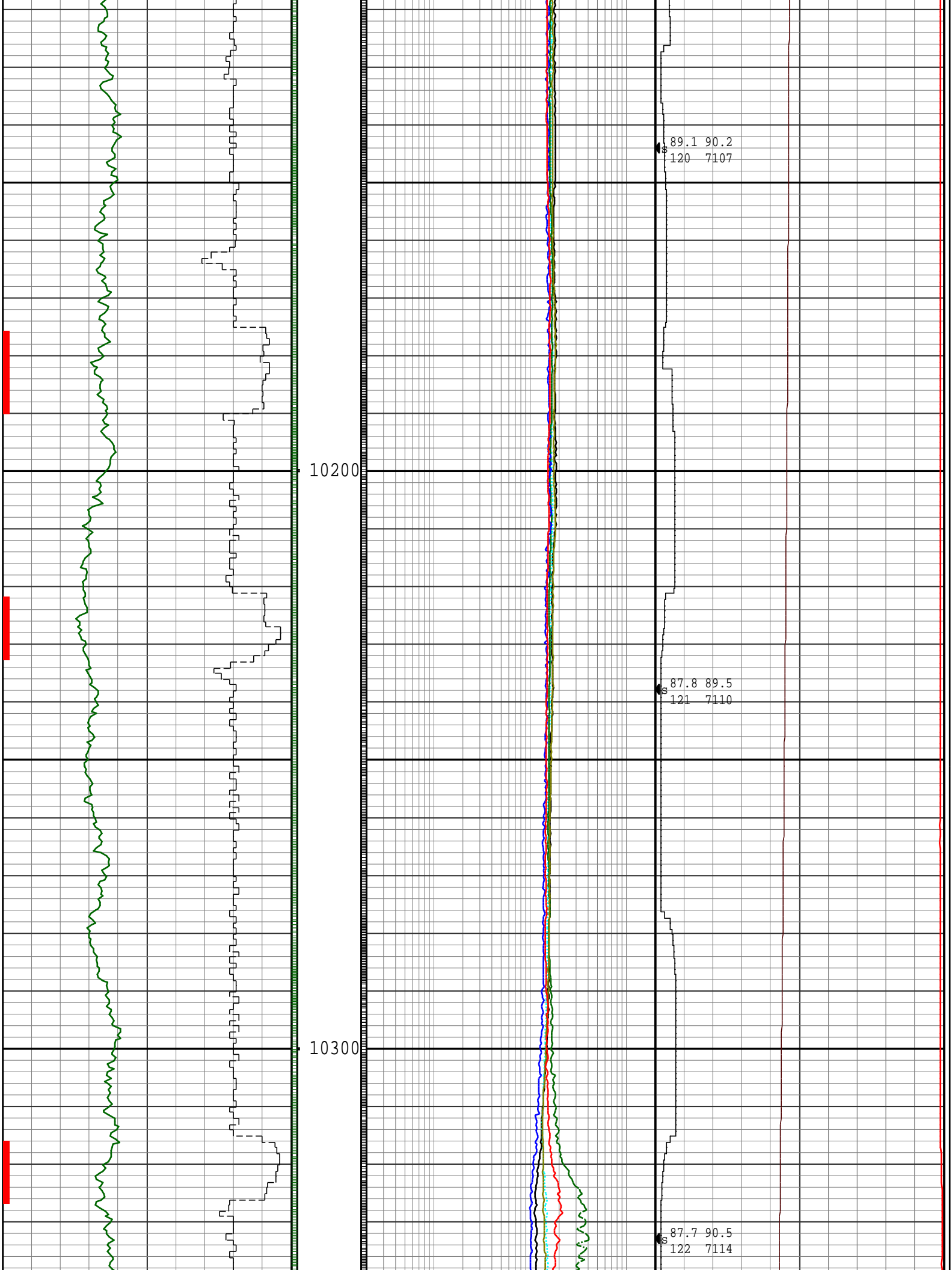


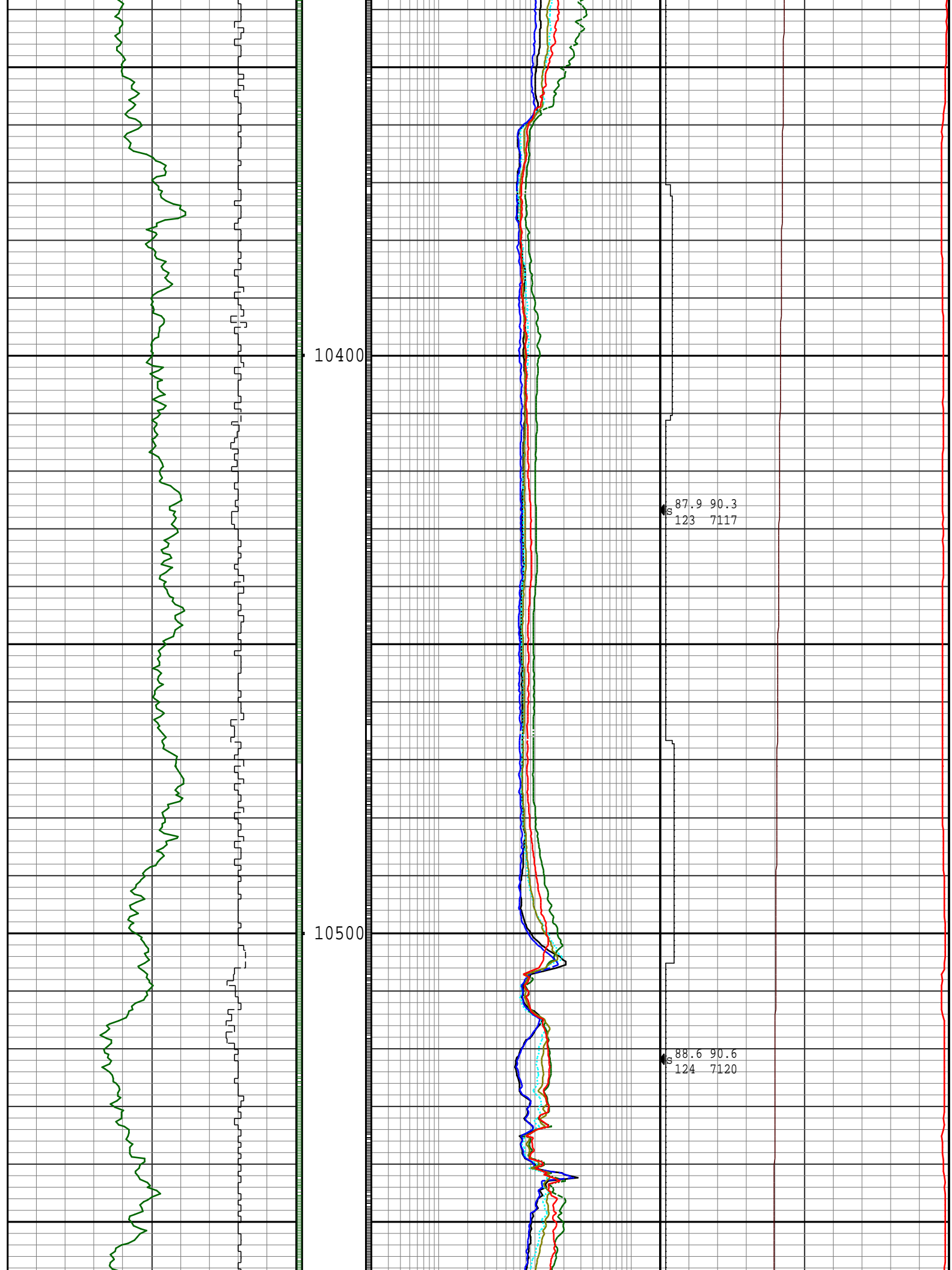
9700

9800

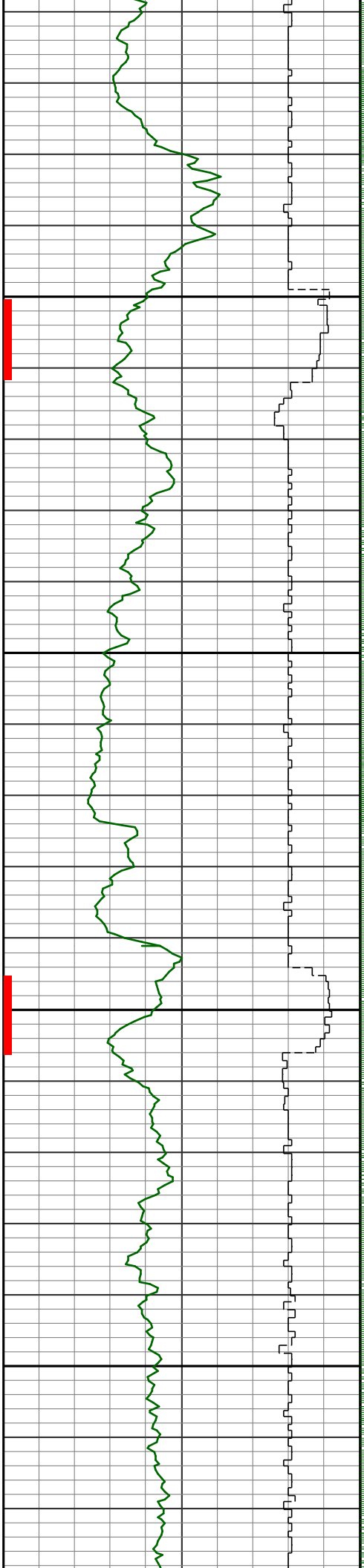






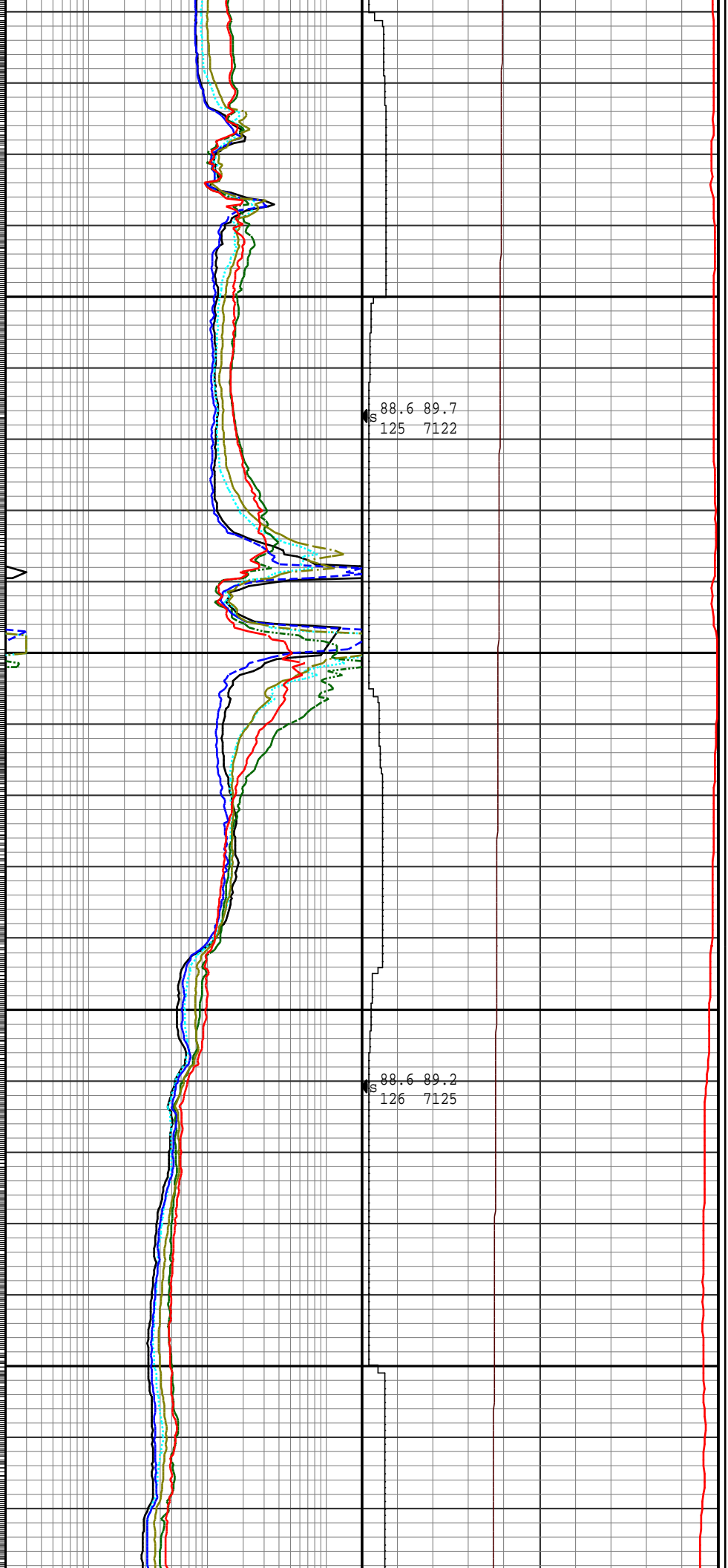


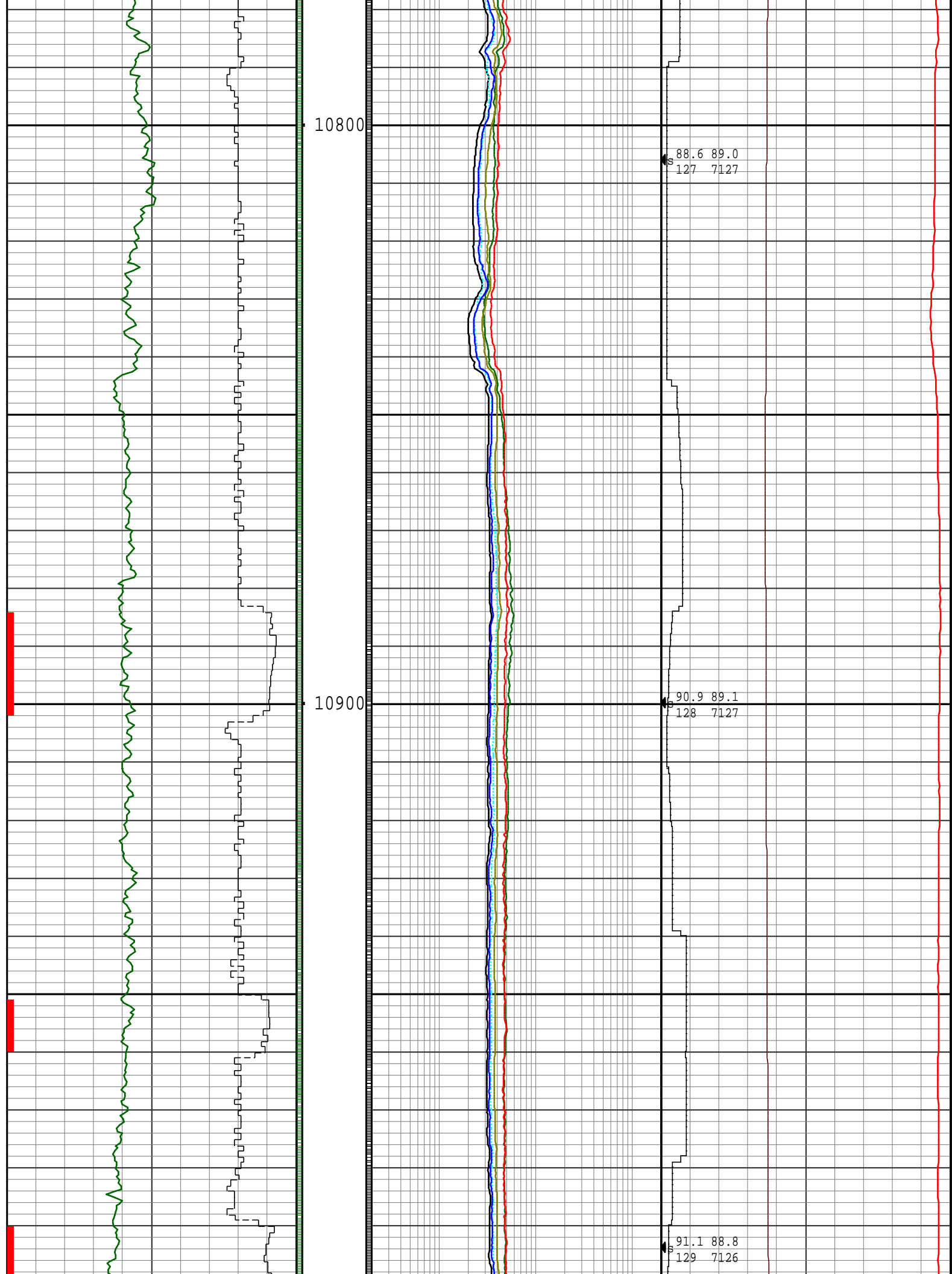


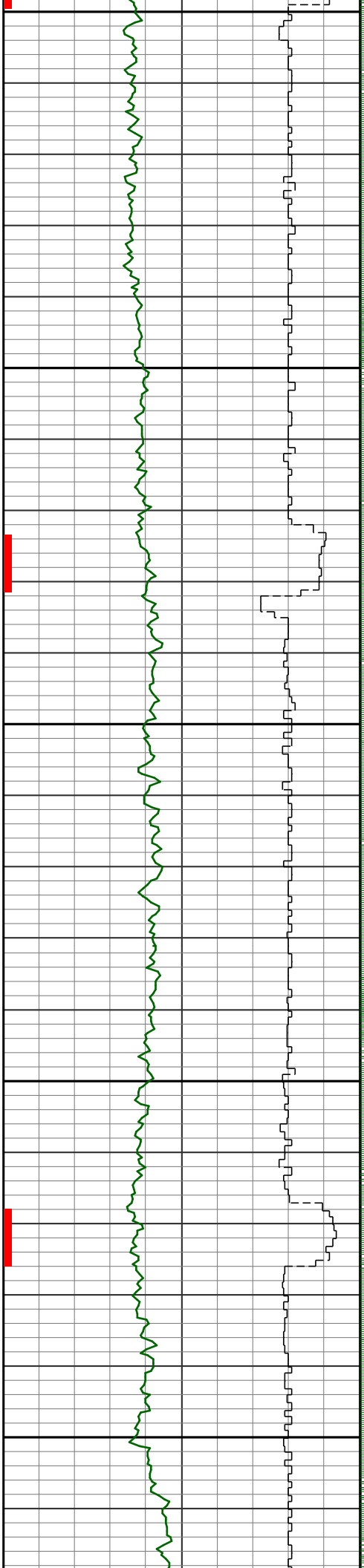


10600

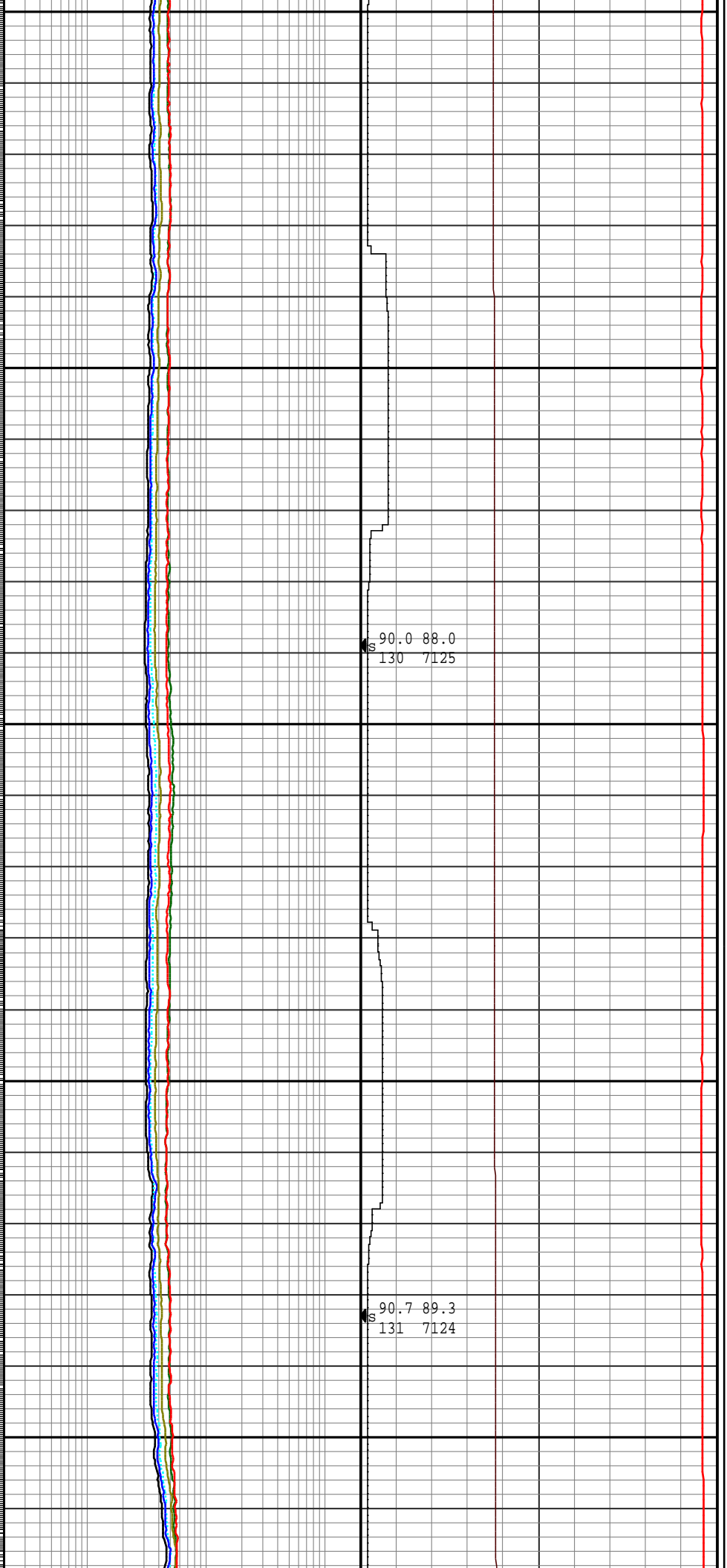
10700





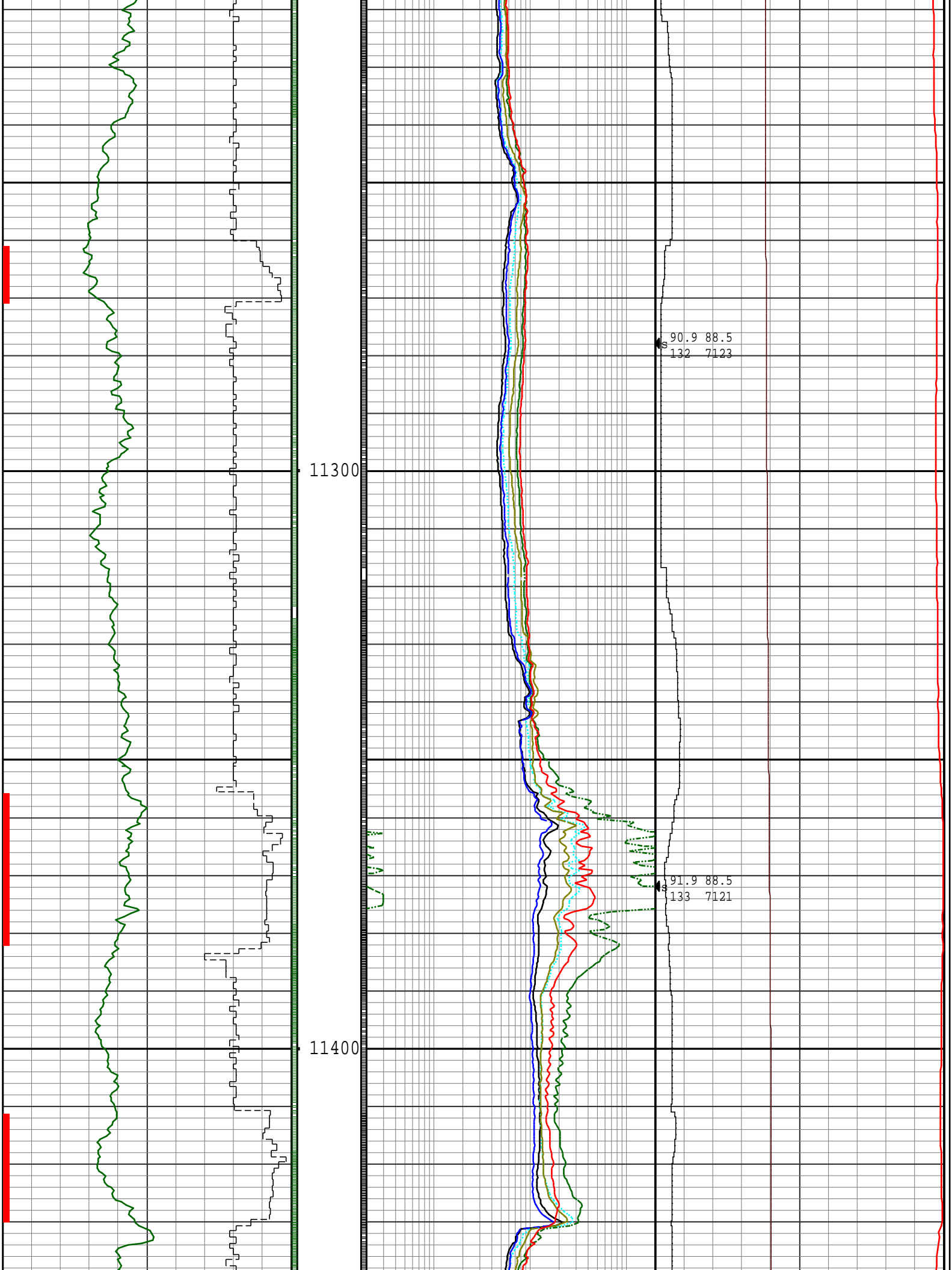


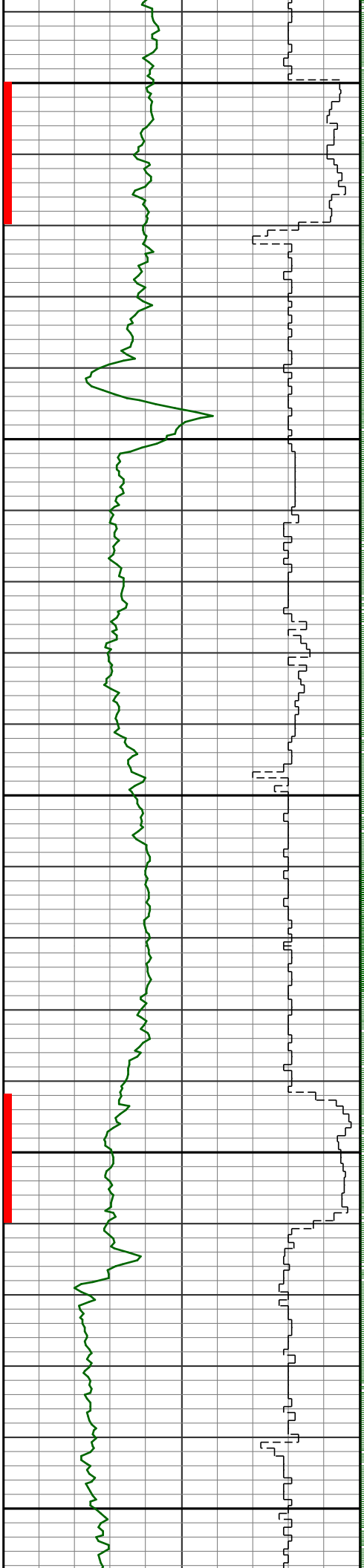
11000  
11100  
11200



90.0 88.0  
130 7125

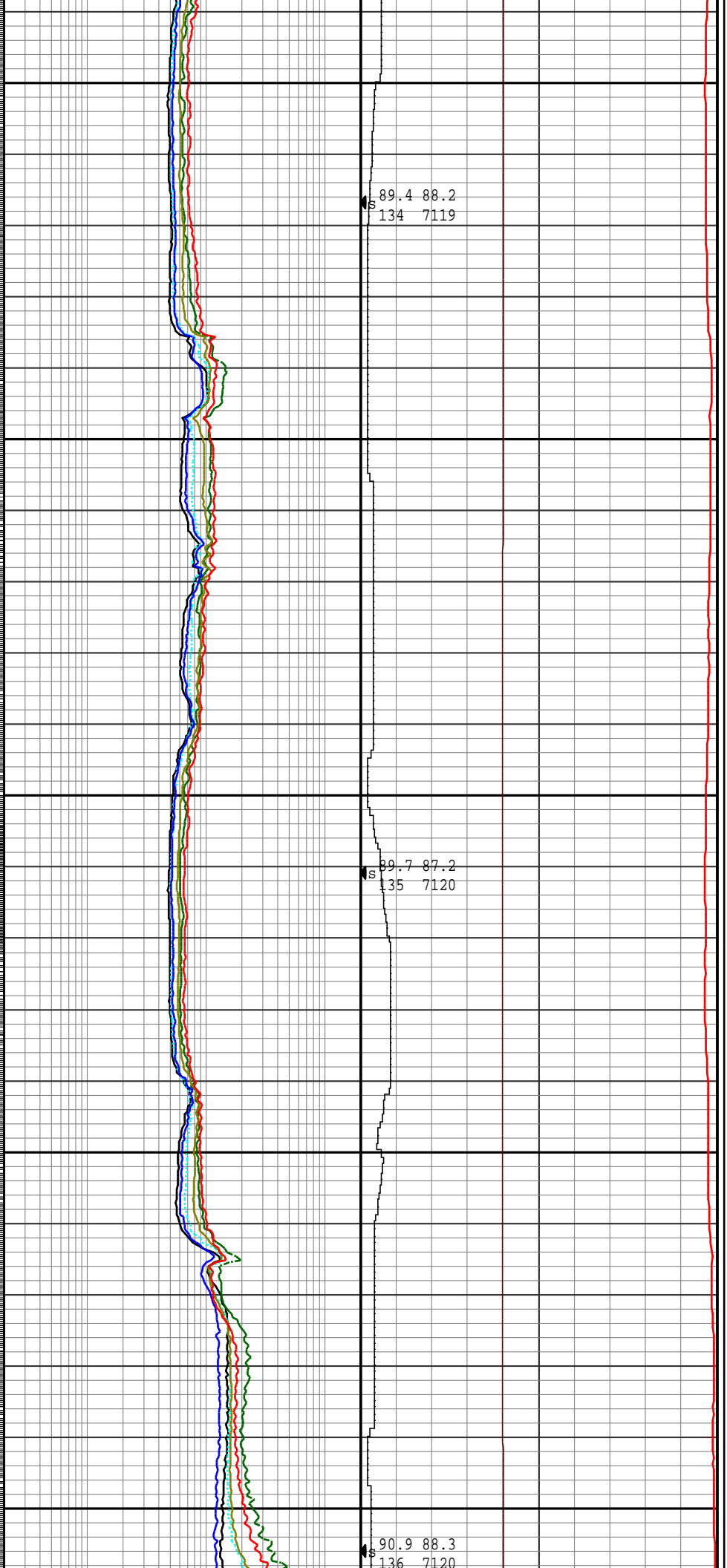
90.7 89.3  
131 7124

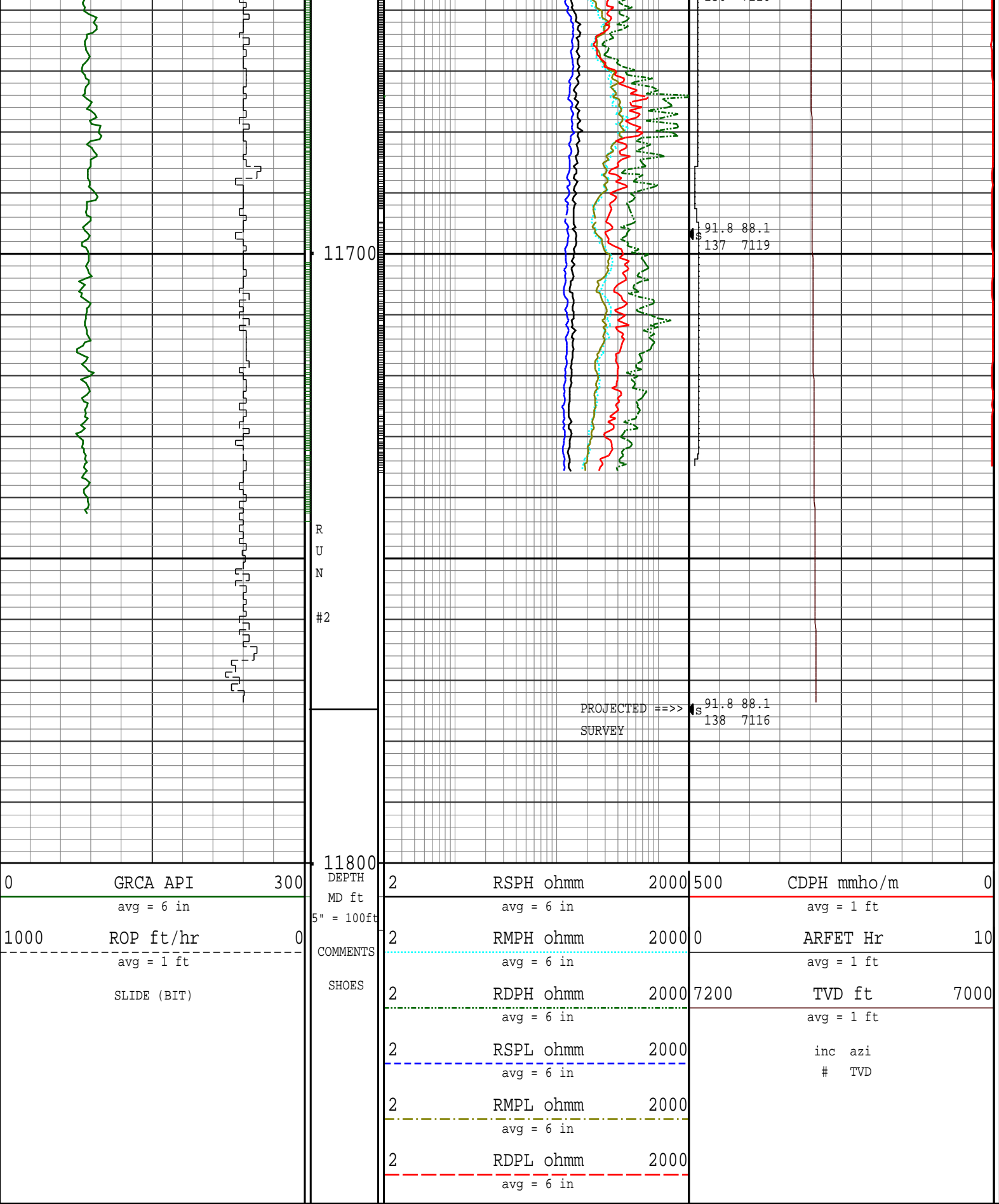




11500

11600





Survey Report

Vertical Section Plane: 87.45°	Total Correction: 8.66° East to True
Calculation Method: Minimum Curvature	Survey Reference: Wellhead
North Aligned to: True North	Well: PAVISTMA SOUTH #1

RT: 22.5 FT ROTARY TABLE TO GROUND LEVEL							FIELD: WATENBERG					
Measured Depth (ft)	Inclination (deg)	Azimuth (deg)	TVD (ft)	Course Length (ft)	Vertical Section (ft)		Rect Co-ord North (ft)	Rect Co-ord East (ft)	Closure Distance (ft)	Closure Direction (deg)	Dog-leg Severity (dg/hft)	Temp (deg F)
THE FOLLOWING ARE ENSIGN DIRECTIONAL SERVICES MWD SURVEYS.												
167.00	0.90	325.40	166.99	167.00	-0.70		1.08 N	0.74 W	1.31	325.40	0.54	
259.00	1.10	327.00	258.98	92.00	-1.53		2.41 N	1.64 W	2.92	325.88	0.22	
351.00	1.70	327.20	350.95	92.00	-2.66		4.30 N	2.86 W	5.16	326.42	0.65	
444.00	2.40	337.00	443.89	93.00	-4.04		7.25 N	4.36 W	8.47	328.97	0.84	
536.00	2.60	320.50	535.80	92.00	-5.96		10.64 N	6.44 W	12.44	328.79	0.81	
628.00	1.50	292.00	627.75	92.00	-8.31		12.70 N	8.89 W	15.50	325.01	1.60	
720.00	1.70	283.30	719.71	92.00	-10.72		13.46 N	11.33 W	17.60	319.91	0.34	
812.00	1.80	279.40	811.67	92.00	-13.45		14.01 N	14.09 W	19.87	314.85	0.17	
1000.00	2.60	289.90	999.53	188.00	-20.28		15.95 N	21.01 W	26.38	307.20	0.48	
1092.00	2.20	276.40	1091.45	92.00	-23.95		16.86 N	24.73 W	29.92	304.28	0.75	
1186.00	2.10	282.70	1185.38	94.00	-27.40		17.44 N	28.20 W	33.15	301.73	0.27	
1281.00	2.10	290.80	1280.32	95.00	-30.67		18.44 N	31.52 W	36.52	300.32	0.31	
1373.00	1.90	276.20	1372.26	92.00	-33.73		19.20 N	34.62 W	39.58	299.01	0.59	
1466.00	1.60	274.30	1465.22	93.00	-36.54		19.46 N	37.44 W	42.20	297.47	0.33	
1558.00	1.40	279.20	1557.19	92.00	-38.92		19.74 N	39.83 W	44.46	296.36	0.26	
1650.00	1.50	275.50	1649.16	92.00	-41.21		20.03 N	42.14 W	46.66	295.43	0.15	
1742.00	1.50	280.60	1741.13	92.00	-43.57		20.37 N	44.52 W	48.96	294.59	0.14	
1835.00	2.00	314.40	1834.09	93.00	-45.87		21.73 N	46.88 W	51.67	294.87	1.21	
1927.00	4.20	331.20	1925.95	92.00	-48.45		25.81 N	49.65 W	55.96	297.46	2.56	
2019.00	5.60	317.40	2017.61	92.00	-52.83		32.06 N	54.31 W	63.07	300.56	1.98	
2111.00	6.80	301.40	2109.08	92.00	-60.24		38.21 N	62.00 W	72.83	301.64	2.27	
2203.00	6.70	294.90	2200.44	92.00	-69.52		43.30 N	71.52 W	83.61	301.19	0.84	
2298.00	8.80	295.20	2294.57	95.00	-80.87		48.73 N	83.12 W	96.35	300.38	2.21	
2391.00	10.50	292.40	2386.25	93.00	-94.85		54.99 N	97.39 W	111.85	299.45	1.90	
2484.00	11.80	289.10	2477.49	93.00	-111.37		61.33 N	114.21 W	129.64	298.24	1.56	
2578.00	11.50	289.40	2569.56	94.00	-129.00		67.59 N	132.13 W	148.42	297.09	0.32	
2671.00	10.60	283.30	2660.84	93.00	-145.82		72.64 N	149.20 W	165.95	295.96	1.59	
2764.00	10.90	284.00	2752.20	93.00	-162.48		76.73 N	166.06 W	182.93	294.80	0.35	
2858.00	11.80	288.30	2844.37	94.00	-179.98		81.90 N	183.81 W	201.23	294.02	1.31	
2952.00	10.90	286.20	2936.53	94.00	-197.38		87.40 N	201.47 W	219.61	293.45	1.05	
3046.00	10.80	286.40	3028.85	94.00	-214.13		92.36 N	218.45 W	237.18	292.92	0.11	
3139.00	12.00	282.20	3120.01	93.00	-231.72		96.87 N	236.26 W	255.35	292.29	1.57	
3234.00	10.80	283.10	3213.14	95.00	-249.84		100.97 N	254.59 W	273.88	291.63	1.28	
3327.00	10.00	282.90	3304.61	93.00	-266.01		104.75 N	270.94 W	290.49	291.14	0.86	
3421.00	9.30	287.10	3397.28	94.00	-281.03		108.80 N	286.16 W	306.15	290.82	1.06	
3514.00	9.60	288.70	3489.02	93.00	-295.34		113.50 N	300.69 W	321.39	290.68	0.43	
3609.00	10.60	293.60	3582.54	95.00	-310.57		119.54 N	316.20 W	338.04	290.71	1.39	
3704.00	10.70	292.40	3675.91	95.00	-326.40		126.40 N	332.36 W	355.58	290.82	0.26	
3799.00	10.60	291.00	3769.27	95.00	-342.41		132.89 N	348.67 W	373.13	290.86	0.29	
3894.00	11.00	290.10	3862.59	95.00	-358.79		139.13 N	365.34 W	390.93	290.85	0.46	
3988.00	9.90	287.60	3955.03	94.00	-374.65		144.66 N	381.46 W	407.97	290.77	1.27	
4081.00	9.10	290.60	4046.75	93.00	-388.92		149.67 N	395.97 W	423.31	290.71	1.01	
4176.00	9.10	297.10	4140.56	95.00	-402.35		155.73 N	409.69 W	438.29	290.81	1.08	
4270.00	9.00	298.00	4233.39	94.00	-415.15		162.57 N	422.80 W	452.97	291.03	0.19	
4363.00	8.40	299.10	4325.32	93.00	-427.19		169.29 N	435.16 W	466.92	291.26	0.67	
4457.00	8.10	287.60	4418.35	94.00	-439.25		174.63 N	447.47 W	480.34	291.32	1.78	
4550.00	5.50	294.50	4510.69	93.00	-449.38		178.46 N	457.77 W	491.33	291.30	2.93	
4645.00	4.90	280.60	4605.31	95.00	-457.38		181.09 N	465.90 W	499.86	291.24	1.46	
4740.00	3.10	285.70	4700.07	95.00	-463.77		182.54 N	472.36 W	506.40	291.13	1.93	
4834.00	0.80	287.30	4794.01	94.00	-466.81		183.42 N	475.44 W	509.59	291.10	2.45	
4930.00	1.10	290.50	4890.00	96.00	-468.28		183.94 N	476.94 W	511.18	291.09	0.32	
5024.00	1.20	284.10	4983.98	94.00	-470.06		184.50 N	478.74 W	513.06	291.08	0.17	
5118.00	0.90	290.10	5077.96	94.00	-471.68		184.99 N	480.39 W	514.78	291.06	0.34	
5213.00	0.90	284.80	5172.95	95.00	-473.08		185.44 N	481.81 W	516.26	291.05	0.09	
5309.00	0.80	277.30	5268.94	96.00	-474.46		185.71 N	483.20 W	517.66	291.02	0.16	
5403.00	1.20	251.10	5362.92	94.00	-476.05		185.48 N	484.79 W	519.06	290.94	0.64	
5497.00	1.10	257.40	5456.91	94.00	-477.89		184.96 N	486.60 W	520.57	290.81	0.17	
5591.00	1.20	227.90	5550.89	94.00	-479.53		184.11 N	488.21 W	521.77	290.66	0.63	
5686.00	1.10	234.40	5645.87	95.00	-481.06		182.91 N	489.69 W	522.73	290.48	0.17	
5779.00	1.10	209.40	5738.85	93.00	-482.29		181.61 N	490.85 W	523.37	290.30	0.51	
5873.00	1.00	224.20	5832.84	94.00	-483.36		180.24 N	491.87 W	523.85	290.12	0.31	
5967.00	0.60	79.90	5926.83	94.00	-483.47		179.74 N	491.95 W	523.76	290.07	1.63	
6061.00	1.90	83.70	6020.81	94.00	-481.43		179.99 N	489.92 W	521.94	290.17	1.38	
6156.00	3.60	92.70	6115.70	95.00	-476.89		180.03 N	485.38 W	517.69	290.35	1.84	
6251.00	4.40	77.20	6210.47	95.00	-470.33		180.69 N	478.84 W	511.80	290.67	1.41	
6298.00	4.50	72.00	6257.32	47.00	-466.78		181.66 N	475.33 W	508.86	290.92	0.88	
6346.00	5.70	78.30	6305.13	48.00	-462.61		182.73 N	471.21 W	505.39	291.20	2.76	
6393.00	7.80	85.70	6351.81	47.00	-457.12		183.44 N	465.74 W	500.56	291.50	4.83	
6440.00	9.90	86.00	6398.24	47.00	-449.89		183.96 N	458.53 W	494.05	291.86	4.47	
6487.00	11.80	89.50	6444.40	47.00	-441.05		184.28 N	449.69 W	485.99	292.28	4.28	

Survey Report												
Vertical Section Plane: 87.45°							Total Correction: 8.66° East to True					
Calculation Method: Minimum Curvature							Survey Reference: Wellhead					
North Aligned to: True North							Well: PAVISTMA SOUTH #1					
RT: 22.5 FT ROTARY TABLE TO GROUND LEVEL							FIELD: WATENBERG					
Measured	Inclination	Azimuth	TVD	Course	Vertical		Rect Co-ord	Rect Co-ord	Closure	Closure	Dog-leg	Temp

Measured Depth (ft)	Inclination (deg)	Azimuth (deg)	True (ft)	Course Length (ft)	Section (ft)	Vertical Section (ft)	Rect to Ord North (ft)	Rect to Ord East (ft)	Closure Distance (ft)	Closure Direction (deg)	Log Leg Severity (dg/hft)	Temp (deg F)
6535.00	14.00	94.80	6491.19	48.00	-430.38		183.84 N	439.00 W	475.94	292.72	5.20	
6582.00	16.30	95.90	6536.55	47.00	-418.22		182.69 N	426.77 W	464.23	293.17	4.93	
6630.00	18.00	93.20	6582.42	48.00	-404.17		181.58 N	412.66 W	450.84	293.75	3.91	
6677.00	20.40	92.00	6626.80	47.00	-388.78		180.89 N	397.22 W	436.47	294.48	5.17	
6722.00	24.30	89.20	6668.41	45.00	-371.70		180.74 N	380.12 W	420.90	295.43	8.98	
6769.00	28.10	88.10	6710.58	47.00	-350.96		181.25 N	359.38 W	402.50	296.76	8.15	
6816.00	31.20	90.60	6751.42	47.00	-327.73		181.49 N	336.14 W	382.00	298.37	7.10	
6863.00	33.80	94.50	6791.06	47.00	-302.59		180.33 N	310.92 W	359.43	300.11	7.10	
6910.00	36.70	94.80	6829.44	47.00	-275.68		178.13 N	283.89 W	335.15	302.11	6.18	
6957.00	42.60	90.10	6865.62	47.00	-245.83		176.93 N	253.96 W	309.51	304.86	14.07	
7003.00	48.80	89.70	6897.73	46.00	-212.96		176.99 N	221.05 W	283.18	308.68	13.49	
7050.00	53.50	89.00	6927.20	47.00	-176.38		177.41 N	184.46 W	255.93	313.88	10.07	
7097.00	57.20	88.80	6953.92	47.00	-137.74		178.16 N	145.81 W	230.22	320.70	7.88	
7144.00	59.80	89.00	6978.48	47.00	-97.68		178.93 N	105.75 W	207.84	329.42	5.54	
7191.00	61.10	89.20	7001.66	47.00	-56.81		179.57 N	64.87 W	190.92	340.14	2.79	
7238.00	63.80	89.00	7023.39	47.00	-15.16		180.22 N	23.20 W	181.71	352.66	5.76	
7285.00	67.70	88.80	7042.69	47.00	27.67		181.05 N	19.63 E	182.11	6.19	8.31	
7332.00	69.90	90.40	7059.69	47.00	71.45		181.35 N	63.45 E	192.13	19.28	5.65	
7376.00	72.00	91.10	7074.05	44.00	112.97		180.80 N	105.03 E	209.09	30.15	5.00	
7423.00	75.30	90.90	7087.28	47.00	157.98		180.02 N	150.12 E	234.39	39.83	7.03	
7471.00	79.50	91.10	7097.75	48.00	204.72		179.20 N	196.94 E	266.27	47.70	8.76	
TIED INTO ENSIGN DIRECTIONAL SERVICES MWD SURVEY AT 7491'MD.												
7491.00	82.10	92.00	7100.94	20.00	224.41		178.66 N	216.68 E	280.84	50.49	13.74	
THE FOLLOWING ARE PATHFINDER MWD SURVEYS.												
7594.00	89.69	93.04	7108.31	103.00	326.67		174.14 N	319.24 E	363.65	61.39	7.44	176.92
7689.00	93.47	92.68	7105.69	95.00	421.19		169.41 N	414.06 E	447.38	67.75	4.00	176.92
7783.00	96.02	91.80	7097.92	94.00	514.53		165.74 N	507.66 E	534.03	71.92	2.87	169.69
7877.00	96.38	89.17	7087.77	94.00	607.84		164.95 N	601.10 E	623.32	74.65	2.81	169.69
7972.00	90.57	87.50	7082.01	95.00	702.61		167.71 N	695.84 E	715.77	76.45	6.36	173.31
8066.00	89.43	87.23	7082.01	94.00	796.61		172.03 N	789.74 E	808.26	77.71	1.25	173.31
8161.00	89.96	86.79	7082.51	95.00	891.61		176.99 N	884.61 E	902.14	78.69	0.72	176.92
8255.00	89.34	89.52	7083.09	94.00	985.59		180.01 N	978.55 E	994.97	79.58	2.98	176.92
8350.00	89.87	89.52	7083.74	95.00	1080.53		180.81 N	1073.54 E	1088.66	80.44	0.56	176.92
8444.00	90.04	89.52	7083.82	94.00	1174.46		181.60 N	1167.54 E	1181.58	81.16	0.18	173.31
8538.00	88.81	89.78	7084.76	94.00	1268.39		182.17 N	1261.53 E	1274.62	81.78	1.34	176.92
8633.00	88.72	88.82	7086.81	95.00	1363.31		183.33 N	1356.50 E	1368.83	82.30	1.01	180.54
8727.00	88.99	89.52	7088.69	94.00	1457.25		184.69 N	1450.47 E	1462.18	82.74	0.80	180.54
8822.00	89.08	90.13	7090.29	95.00	1552.16		184.98 N	1545.46 E	1556.49	83.17	0.65	184.15
8916.00	89.60	90.05	7091.37	94.00	1646.05		184.84 N	1639.45 E	1649.84	83.57	0.56	184.15
9011.00	90.22	89.26	7091.52	95.00	1740.98		185.41 N	1734.45 E	1744.33	83.90	1.06	187.76
9105.00	90.04	88.99	7091.31	94.00	1834.94		186.84 N	1828.44 E	1837.96	84.17	0.35	184.15
9200.00	90.13	89.61	7091.16	95.00	1929.89		188.00 N	1923.43 E	1932.60	84.42	0.66	187.76
9294.00	90.04	90.31	7091.03	94.00	2023.80		188.07 N	2017.43 E	2026.18	84.67	0.75	187.76
9389.00	90.13	90.84	7090.88	95.00	2118.66		187.12 N	2112.42 E	2120.69	84.94	0.57	187.76
9483.00	89.87	91.28	7090.88	94.00	2212.47		185.38 N	2206.41 E	2214.18	85.20	0.54	184.15
9578.00	88.37	90.75	7092.34	95.00	2307.27		183.69 N	2301.38 E	2308.70	85.44	1.67	187.76
9672.00	88.20	90.22	7095.16	94.00	2401.10		182.90 N	2395.33 E	2402.30	85.63	0.59	187.76
9766.00	89.16	90.75	7097.32	94.00	2494.94		182.10 N	2489.30 E	2495.95	85.82	1.17	187.76
9861.00	88.64	90.49	7099.15	95.00	2589.78		181.08 N	2584.28 E	2590.61	85.99	0.61	187.76
9955.00	88.46	89.87	7101.52	94.00	2683.64		180.78 N	2678.25 E	2684.34	86.14	0.69	187.76
10050.00	87.67	89.87	7104.73	95.00	2778.50		181.00 N	2773.19 E	2779.09	86.27	0.83	187.76
10144.00	89.08	90.22	7107.40	94.00	2872.36		180.92 N	2867.15 E	2872.85	86.39	1.55	187.76
10238.00	87.85	89.52	7109.92	94.00	2966.24		181.13 N	2961.12 E	2966.65	86.50	1.51	191.38
10333.00	87.67	90.49	7113.63	95.00	3061.07		181.13 N	3056.04 E	3061.40	86.61	1.04	191.38
10427.00	87.93	90.31	7117.24	94.00	3154.88		180.47 N	3149.97 E	3155.14	86.72	0.34	191.38
10522.00	88.64	90.57	7120.08	95.00	3249.71		179.74 N	3244.92 E	3249.90	86.83	0.80	191.38
10617.00	88.64	89.70	7122.34	95.00	3344.58		179.52 N	3339.90 E	3344.72	86.92	0.92	194.99
10711.00	88.64	89.17	7124.57	94.00	3438.49		180.44 N	3433.87 E	3438.60	86.99	0.56	194.99
10806.00	88.55	88.99	7126.90	95.00	3533.43		181.97 N	3528.82 E	3533.51	87.05	0.21	198.61
10900.00	90.92	89.08	7127.33	94.00	3627.38		183.55 N	3622.80 E	3627.45	87.10	2.52	191.38
10994.00	91.10	88.82	7125.67	94.00	3721.34		185.27 N	3716.77 E	3721.39	87.15	0.34	191.38
11089.00	90.04	88.03	7124.73	95.00	3816.31		187.89 N	3811.73 E	3816.36	87.18	1.39	194.99
11183.00	90.66	89.34	7124.15	94.00	3910.29		190.04 N	3905.70 E	3910.32	87.21	1.54	194.99
11278.00	90.92	88.46	7122.84	95.00	4005.25		191.87 N	4000.67 E	4005.27	87.25	0.97	198.61
11372.00	91.89	88.46	7120.54	94.00	4099.20		194.39 N	4094.61 E	4099.22	87.28	1.03	191.38
11467.00	89.43	88.20	7119.45	95.00	4194.18		197.16 N	4189.56 E	4194.19	87.31	2.60	194.99
11561.00	89.69	87.15	7120.17	94.00	4288.17		200.97 N	4283.47 E	4288.19	87.31	1.15	194.99
11656.00	90.92	88.29	7119.66	95.00	4383.17		204.75 N	4378.39 E	4383.18	87.32	1.77	198.61
11697.00	91.80	88.11	7118.69	41.00	4424.15		206.04 N	4419.36 E	4424.16	87.33	2.19	198.61
STRAIGHT LINE PROJECTION TO BIT DEPTH AT 11775'MD.												
11775.00	91.80	88.11	7116.24	78.00	4502.11		208.61 N	4497.28 E	4502.12	87.34	0.00	

## PATHFINDER ENERGY SERVICES - TOOL CODES & DESCRIPTIONS

**HDS1M HIGH SPEED DIRECTIONAL SURVEY MULTILINK TOOL**

**HDS1L HIGH SPEED DIRECTIONAL SURVEY GAMMA TOOL**

**HDS1R HIGH SPEED DIRECTIONAL SURVEY GAMMA RETRIEVABLE TOOL**

**AWR ARRAY WAVE RESISTIVITY GAMMA MULTILINK TOOL**

**CWRGM COMPENSATED WAVE RESISTIVITY GAMMA MULTILINK TOOL**

**SCWR SLIM COMPENSATED WAVE RESISTIVITY TOOL**

**DNSCM DENSITY NEUTRON STANDOFF CALIPER MULTILINK TOOL**

**CLSSM COMPENSATED LONG SPACE SONIC TOOL**

**SCLSS SLIM COMPENSATED LONG SPACE SONIC MULTILINK TOOL**

**DPM DYNAMIC PRESSURE MODULE**

**PZIG AT-BIT INCLINATION AND GAMMA RAY**

**2DRS 2D ROTARY STEERING TOOL**

**3DRS 3D ROTARY STEERING TOOL**

**DFT DRILLING FORMATION TESTER**



# PATHFINDER ENERGY SERVICES - MNEMONICS LIST

## GENERAL

AHV	ANNULAR HOLE VOLUME TICKS	ROP	RATE OF PENETRATION
AHVT	ANNULAR HOLE VOLUME-ACCUMULATIVE TOTAL	GRW	RAW GAMMA RAY
BHV	BOREHOLE VOLUME TICKS	GRC	CALIBRATED GAMMA RAY
BHVT	BOREHOLE VOLUME-ACCUMULATIVE TOTAL	GREC	ENVIRONMENTALLY CORRECTED GAMMA RAY
DEPT	MEASURED DEPTH	RM	RESISTIVITY OF MUD
MTVD	MEASURED TRUE VERTICAL DEPTH	RMF	RESISTIVITY OF MUD FILTRATE
INC	INCLINATION	SHOES	CASING SHOE SYMBOLS
AZI	AZIMUTH	SURVS	SURVEY TEXT SYMBOLS

## 4 3/4" SCWR

C15A	CWR ATTENUATION CONDUCTIVITY ( 15" )	R35A	CWR ATTENUATION RESISTIVITY ( 35" )
C15P	CWR PHASE CONDUCTIVITY ( 15" )	R35P	CWR PHASE RESISTIVITY ( 35" )
C35A	CWR ATTENUATION CONDUCTIVITY ( 35" )	UL1A	UNCOMPENSATED 15" ATTENUATION RESISTIVITY LOWER
C35P	CWR PHASE CONDUCTIVITY ( 35" )	UL1P	UNCOMPENSATED 15" PHASE RESISTIVITY LOWER
CWRFET	CWR FORMATION EXPOSURE TIME	UL3A	UNCOMPENSATED 35" ATTENUATION RESISTIVITY LOWER
GRC	CALIBRATED GAMMA RAY	UL3P	UNCOMPENSATED 35" PHASE RESISTIVITY LOWER
GREC	ENVIRONMENTALLY CORRECTED GAMMA RAY	UU1A	UNCOMPENSATED 15" ATTENUATION RESISTIVITY UPPER
GRFET	GAMMA RAY FORMATION EXPOSURE TIME	UU1P	UNCOMPENSATED 15" PHASE RESISTIVITY UPPER
R15A	CWR ATTENUATION RESISTIVITY ( 15" )	UU3A	UNCOMPENSATED 35" ATTENUATION RESISTIVITY UPPER
R15P	CWR PHASE RESISTIVITY ( 15" )	UU3P	UNCOMPENSATED 35" PHASE RESISTIVITY UPPER

## 6 3/4", 8", & 9 1/2" CWR

C25A	CWR ATTENUATION CONDUCTIVITY ( 25" )	R55A	CWR ATTENUATION RESISTIVITY ( 55" )
C25P	CWR PHASE CONDUCTIVITY ( 25" )	R55P	CWR PHASE RESISTIVITY ( 55" )
C55A	CWR ATTENUATION CONDUCTIVITY ( 55" )	UL2A	UNCOMPENSATED 25" ATTENUATION RESISTIVITY LOWER
C55P	CWR PHASE CONDUCTIVITY ( 55" )	UL2P	UNCOMPENSATED 25" PHASE RESISTIVITY LOWER
CWRFET	CWR FORMATION EXPOSURE TIME	UL5A	UNCOMPENSATED 55" ATTENUATION RESISTIVITY LOWER
GRC	CALIBRATED GAMMA RAY	UL5P	UNCOMPENSATED 55" PHASE RESISTIVITY LOWER
GREC	ENVIRONMENTALLY CORRECTED GAMMA RAY	UU2A	UNCOMPENSATED 25" ATTENUATION RESISTIVITY UPPER
GRFET	GAMMA RAY FORMATION EXPOSURE TIME	UU2P	UNCOMPENSATED 25" PHASE RESISTIVITY UPPER
R25A	CWR ATTENUATION RESISTIVITY ( 25" )	UU5A	UNCOMPENSATED 55" ATTENUATION RESISTIVITY UPPER
R25P	CWR PHASE RESISTIVITY ( 25" )	UU5P	UNCOMPENSATED 55" PHASE RESISTIVITY UPPER

## 4 3/4", 6 3/4", 8", & 9 1/2" AWR

GRCA	AWR CALIBRATED GAMMA RAY	RDPH	DEEP PHASE RESISTIVITY FROM 2 MHZ FREQUENCY
GRWA	AWR RAW GAMMA RAY	RSAH	SHALLOW ATTENUATION RESISTIVITY FROM 2 MHZ FREQUENCY
TEMP_A	TEMPERATURE FROM AWR TOOL	RMAH	MEDIUM ATTENUATION RESISTIVITY FROM 2 MHZ FREQUENCY
INC_A	AWR STATIC INCLINATION	RDAH	DEEP ATTENUATION RESISTIVITY FROM 2 MHZ FREQUENCY
INCD_A	AWR DYNAMIC INCLINATION	CSPL	SHALLOW PHASE CONDUCTIVITY FROM 500 KHZ FREQUENCY
RSPL	SHALLOW PHASE RESISTIVITY FROM 500 KHZ FREQUENCY	CMPL	MEDIUM PHASE CONDUCTIVITY FROM 500 KHZ FREQUENCY
RMPL	MEDIUM PHASE RESISTIVITY FROM 500 KHZ FREQUENCY	CDPL	DEEP PHASE CONDUCTIVITY FROM 500 KHZ FREQUENCY
RDPL	DEEP PHASE RESISTIVITY FROM 500 KHZ FREQUENCY	CSPH	SHALLOW PHASE CONDUCTIVITY FROM 2 MHZ FREQUENCY
RSAL	SHALLOW ATTENUATION RESISTIVITY FROM 500 KHZ FREQUENCY	CMPH	MEDIUM PHASE CONDUCTIVITY FROM 2 MHZ FREQUENCY
RMAL	MEDIUM ATTENUATION RESISTIVITY FROM 500 KHZ FREQUENCY	CDPH	DEEP PHASE CONDUCTIVITY FROM 2 MHZ FREQUENCY
RDAL	DEEP ATTENUATION RESISTIVITY FROM 500 KHZ FREQUENCY	ARFET	AWR FORMATION EXPOSURE TIME
RSPH	SHALLOW PHASE RESISTIVITY FROM 2 MHZ FREQUENCY	GAFET	AWR GAMMA RAY FORMATION EXPOSURE TIME
RMPH	MEDIUM PHASE RESISTIVITY FROM 2 MHZ FREQUENCY		

## 4 3/4", 6 3/4", 8" DNSC

BS	BIT SIZE	NLIM	NEUTRON POROSITY ( LIMESTONE MATRIX )
CALI	CALIPER	NNEAR	NEAR NEUTRON COUNT RATE
DDDN	DNSC DATA DENSITY ( 0 - 4 SAMPLES/FT )	NRAT	NEUTRON RATIO
DGAM	DENSITY GAMMA ( NATURAL )	NSAC	ENVIRONMENTALLY CORRECTED NEUTRON
DNPH	NEUTRON POROSITY CORRECTION		
DNSFET	DNSC FORMATION EXPOSURE TIME	NSAN	NEUTRON POROSITY ( SANDSTONE MATRIX )
DPE	PE CORRECTION	PE	PHOTOELECTRIC INDEX

DPHI	DENSITY POROSITY ( GIVEN MATRIX )	PEMI	PHOTOELECTRIC INDEX ( MINIMUM FILTER )
DHRM	DENSITY CORRECTION MINUS	RHOB	BULK DENSITY
DRHO	DENSITY CORRECTION	SDNP	STANDARD DEVIATION NEUTRON POROSITY
DRHP	DENSTIY CORRECTION PLUS	SDPE	STANDARD DEVIATION PE COMPUTATION
EDPH	DENSITY POROSITY-EVR PROCESSED	SDRH	STANDARD DEVIATION DENSITY
ENPH	NEUTRON POROSTIY-EVR PROCESSED	SOA	UNWEIGHTED DENSITY STANDOFF
ERHO	BULK DENSITY-EVR PROCESSED	TBDN	TIME BEHIND DNSC
NDOL	NEUTRON POROSTIY ( DOLOMITE MATRIX )	WSOD	WEIGHTED STANDOFF DENSITY
NFAR	FAR NEUTRON COUNT RATE	WSON	WEIGHTED STANDOFF NEUTRON

4 3/4" SCLSS, 6 3/4" & 8" CLSS			
ACFET	ACOUSTIC FORMATION EXPOSIRE TIME	SHS1	MAX SHEAR SEMBLANCE , UPPER XMITR
SO	ACOUSTIC TOOL STANDOFF	SHS2	MAX SHEAR SEMBLANCE , LOWER XMITR
SOFF	STANDOFF	SLS1	SHEAR SEMBLANCE MIN CUTOFF , UPPER XMITR
DTCU	DELTA T COMP , UPPER XMITR-FIELD PROCESSED	SLS2	SHEAR SEMBLANCE MIN CUTOFF , LOWER XMITR
DTCL	DELTA T COMP , LOWER XMITR-FIELD PROCESSED	WFT1	WAVEFORM XMITR1 , ALL 4 RCVR5 ( NON-PARSED)
DTP1	DELTA T COMP , UPPER XMITR-POST PROCESSED	WFT2	WAVEFORM XMITR2 , ALL 4 RCVR5 ( NON-PARSED)
DTP2	DELTA T COMP , LOWER XMITR-POST PROCESSED	W11C	PARSED WAVEFORM , XMITR 1 , RCVR 1
DTS1	DELTA T SHEAR , UPPER XMITR-POST PROCESSED	W12C	PARSED WAVEFORM , XMITR 1 , RCVR 2
DTS2	DELTA T SHEAR , LOWER XMITR-POST PROCESSED	W13C	PARSED WAVEFORM , XMITR 1 , RCVR 3
SEM1	SEMBLANCE , UPPER XMITR-POST PROCESSED	W14C	PARSED WAVEFORM , XMITR 1 , RCVR 4
SEM2	SEMBLANCE , LOWER XMITR-POST PROCESSED	W21C	PARSED WAVEFORM , XMITR 2 , RCVR 1
SMX1	MAX COMP SEMBLANCE , UPPER XMITR	W22C	PARSED WAVEFORM , XMITR 2 , RCVR 2
SMX2	MAX COMP SEMBLANCE , LOWER XMITR	W23C	PARSED WAVEFORM , XMITR 2 , RCVR 3
SMN1	COMP SEMBLANCE MIN CUTOFF , UPPER XMITR	W24C	PARSED WAVEFORM , XMITR 2 , RCVR 4
SMN2	COMP SEMBLANCE MIN CUTOFF , LOWER XMITR		

4 3/4" , 6 3/4" , 8" & 9 1/2" DPM & QPM			
ANPR	ANNULAR PRESSURE	KPOSI	KELLY POSITION
BDEPS	BIT DEPTH STAMP	MWC	MUD WEIGHT CALCULATED
DAPR	PRESSURE TOOL DIFFERENTIAL PRESSURE	MWI_P	MUD WEIGHT IN
DPPR	PRESSURE TOOL DRILL PIPE PRESSURE	SPP_I	STANDPIPE PRESSURE
ECDM	EQUIVALENT CIRCULATING DENSITY	SWOB	SURFACE WEIGHT ON BIT
HDEPS	HOLE DEPTH STAMP	TDPM	PRESSURE TOOL ANNULAR TEMPERATURE

6 3/4" DFT			
DFGR	DFT GAMMA RAW	HYDA	HYDROSTATIC PRESSURE -- AFTER
DFGRC	DFT GAMMA CALIBRATED	HYDB	HYDROSTATIC PRESSURE -- BEFORE
DFANPR	DFT ANNULAR PRESSURE	FPRES	FORMATION PRESSURE
DFECD	DFT EQUIVALENT CIRCULATING DENSITY OF THE MUD		

4 3/4", 6 3/4" PZIG			
NBDINC	NEAR BIT DYNAMIC INCLINATION	NBGRC	NEAR BIT GAMMA CALIBRATED
NBSINC	NEAR BIT STATIC INCLINATION	NBTMP	NEAR BIT TEMERATURE
NBGR	NEAR BIT GAMMA RAW	NBIFET	NEAR BIT FORMATION EXPOSURE TIME

## EQUIPMENT DATA

RUN NUMBER	2					
RES DTA	4568					
RES MANDREL	R47M568T					
RES SIZE in	4 3/4					

RES VERIFIER						
API BLANKET	0013					
HDS-1M DTA						
HDS-1M MANDREL						
HDS-1M SIZE in						
DNSC DTA						
DNSC MANDREL						
DNSC SIZE in						
DENSITY SOURCE NO.						
NEUTRON SOURCE NO.						
CLSS DTA						
CLSS MANDREL						
CLSS SIZE in						
DPM DTA						
DPM SIZE in						
DFT DTA						
DFT MANDREL						
DFT SIZE in						
PZIG UXM DTA						
PZIG LXM DTA						
PZIG SIZE in						

BOTTOM HOLE ASSEMBLY RECORD							
RUN 2 ft							
6 1/8" PDC BIT	0.50						
1.5° MUD MOTOR	28.64						
SAWR (GR/RES)	19.92						
SABS (BATTERY)	15.18						
CROSSOVER SUB	1.18						
HDS-1L (DIR/GR)	28.00						
NMDC	30.92						
NMDC	30.90						
1 x 4" DP	31.44						
6 1/8" REAMER	7.40						
173 x 4" DP	5437.90						
CROSSOVER SUB	1.65						
60 x 4" HWDP	1849.06						
CROSSOVER SUB	1.12						
=====							
TOTAL BHA LENGTH	7483.81						
SENSOR OFFSETS:							
DIRECTIONAL	76.18						
HDS-1L GAMMA-RAY	68.10						
RESISTIVITY	39.08						
AWR GAMMA-RAY	32.38						
AWR INCLINATION	31.98						



A Schlumberger Company

RESISTIVITY  
GAMMA-RAY  
CONDUCTIVITY

5" = 100'  
FEET MD