



**Cement Bond/
Variable Density Log
Gamma Ray/CCL**

Company		Tekton Windsor LLC	
Well		Pavistma South #1	
Field		Wattenberg	
County		Weld	
State		Colorado	
Location:		API # : 05-123-37703	
SEC 32 TWP 6N RGE 67W		NONE	
Permanent Datum		Ground Level Elevation 4954'	
Log Measured From		Kelly Bushing 22.5' A.P.D	
Drilling Measured From		Kelly Bushing	
Date		October 24, 2013	
Run Number		1	
Depth Driller		11,770'	
Depth Logger		7230'	
Bottom Logged Interval		7216'	
Top Log Interval		4880'	
Open Hole Size		8.75	
Type Fluid		Water	
Density / Viscosity		8.34	
Max. Recorded Temp.		-	
Estimated Cement Top		5180'	
Time Well Ready		13:30	
Time Logger on Bottom		14:50	
Equipment Number		13033	
Location		Brighton	
Recorded By		C. Rall	
Witnessed By		Rick Ohlmeier	
Run Number		Bit	
From		To	
Size		Weight	
From		To	
Casing Record		Size	
Surface String		9 5/8	
Prot. String		7	
Production String		4 1/2	
Liner		4 1/2	

<<< Fold Here >>>

All interpretations are opinions based on inferences from electrical or other measurements and we cannot and do not guarantee the accuracy or correctness of any interpretation, and we shall not, except in the case of gross or willful negligence on our part, be liable or responsible for any loss, costs, damages, or expenses incurred or sustained by anyone resulting from any interpretation made by any of our officers, agents or employees. These interpretations are also subject to our general terms and conditions set out in our current Price Schedule.

Comments

Main & Repeat Pass Zero Pressure on Surface

Estimated Top of Cement 5180'

Short Joint 6182'-6204'

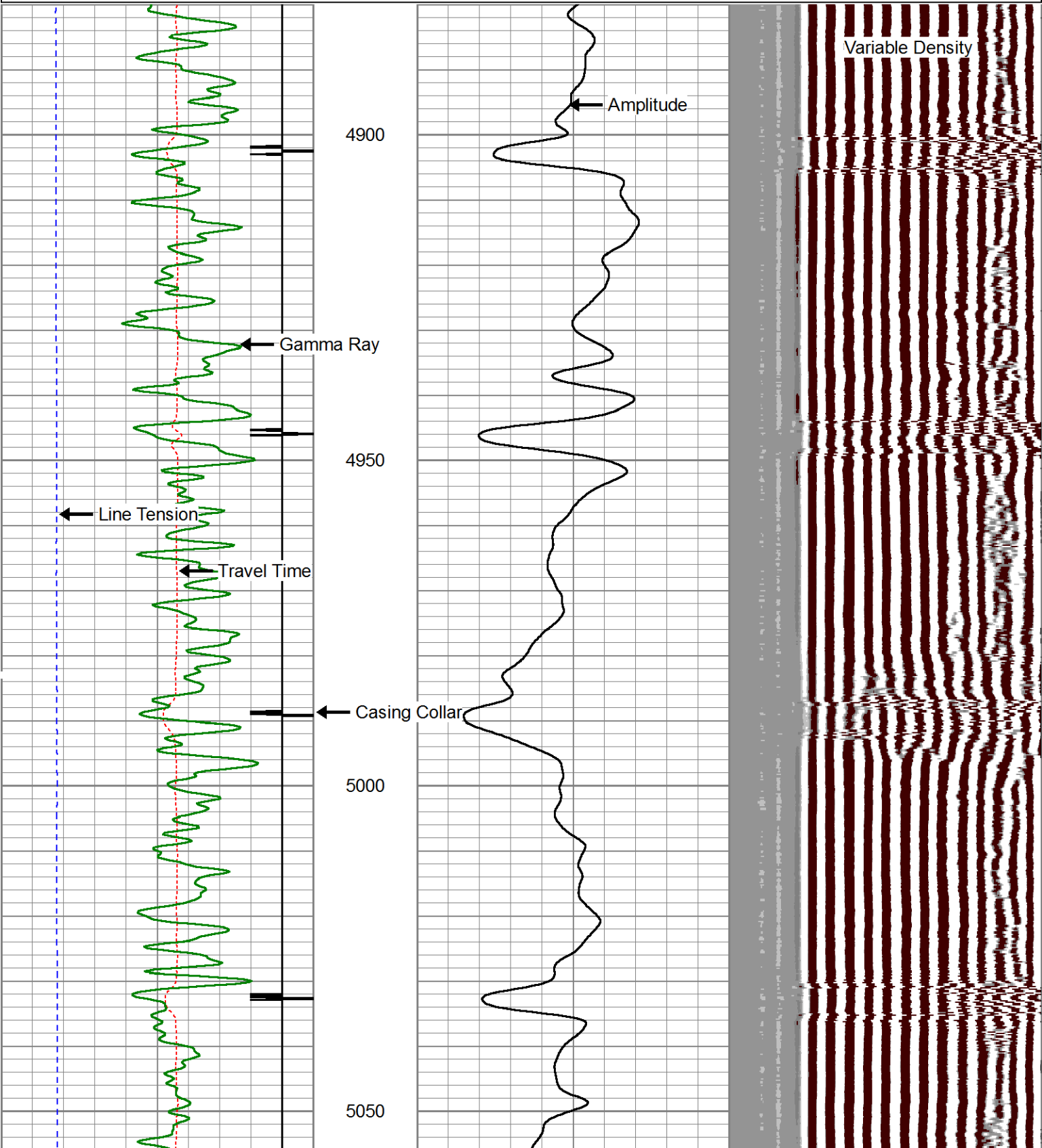
Liner Top @ 7379'

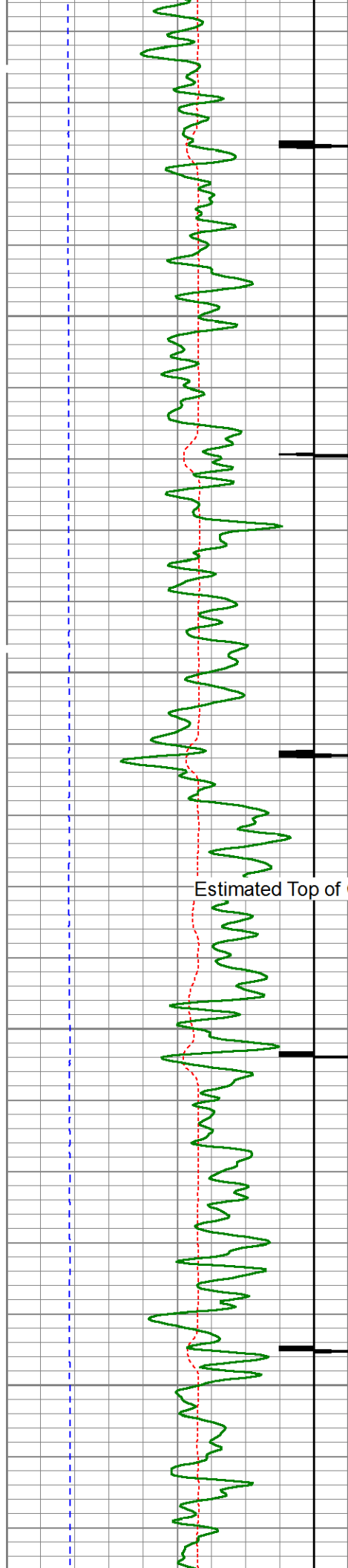
Thank you for using Allied Wireline
(303) 659-4609



Main Pass (0 PSI)

400	Travel Time (usec)	200	0	Amplitude (mV)	100	200	Variable Density	1200
9	Casing Collar	-1	0	Amplified Amplitude (mV)	10			
0	Gamma Ray (GAPI)	150						
0	Line Tension (lb)	5000						





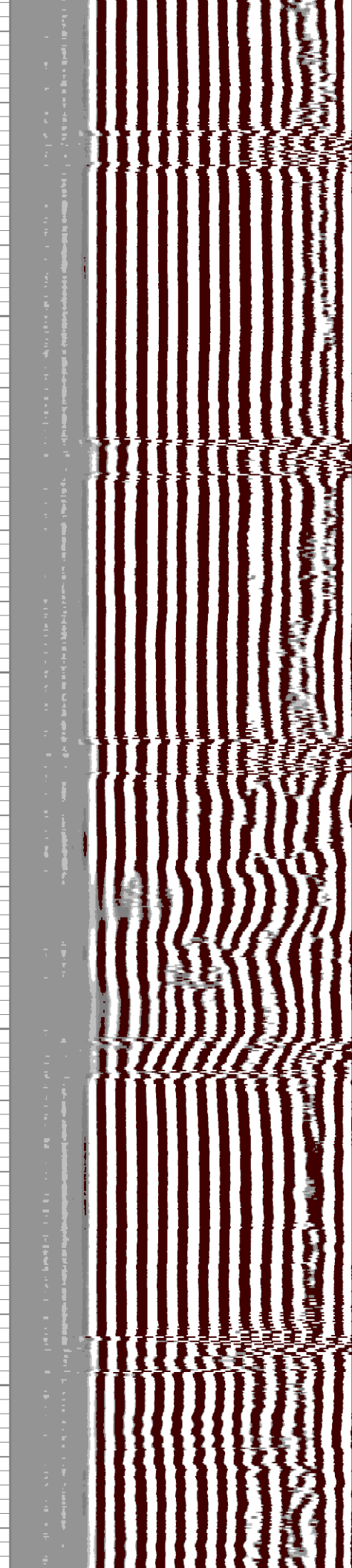
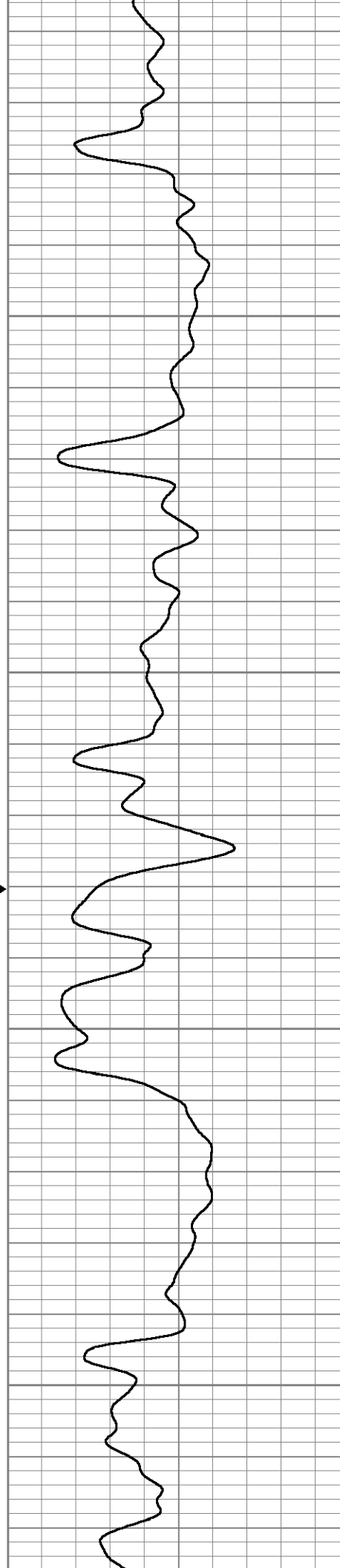
5100

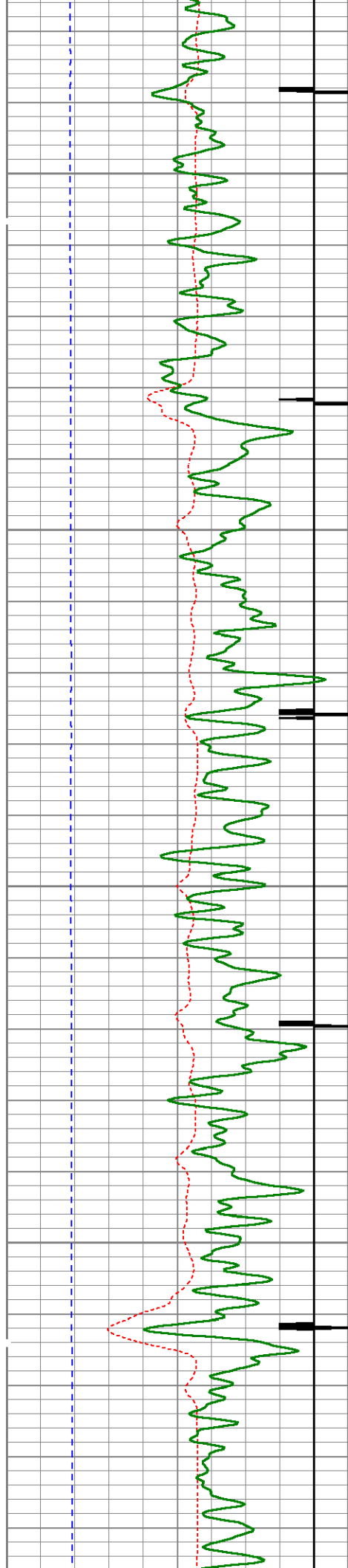
5150

Estimated Top of Cement →

5200

5250



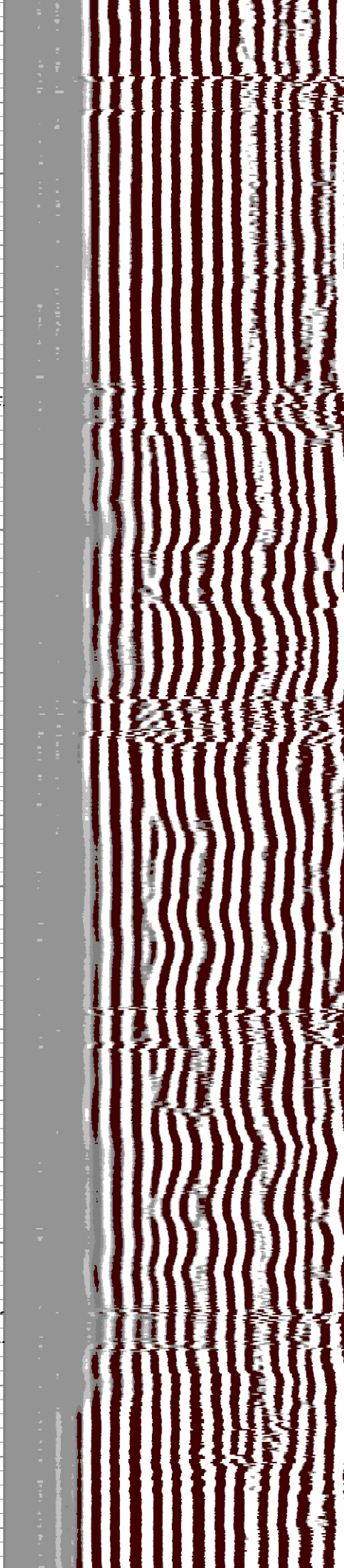
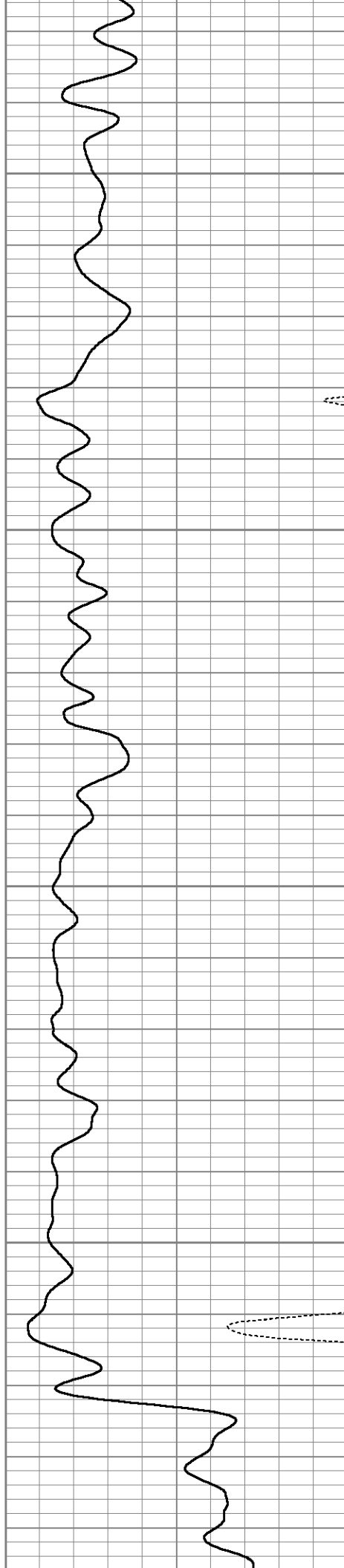


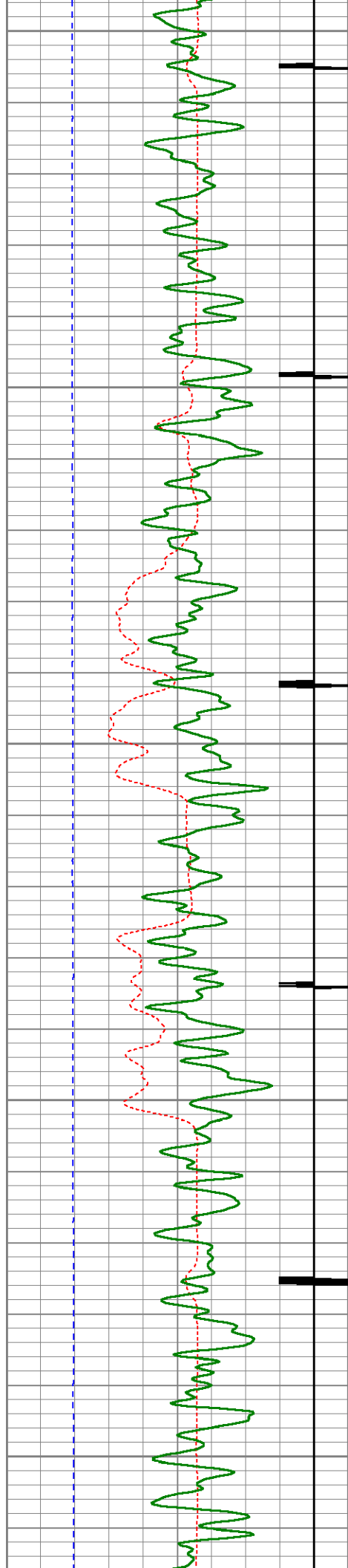
5300

5350

5400

5450





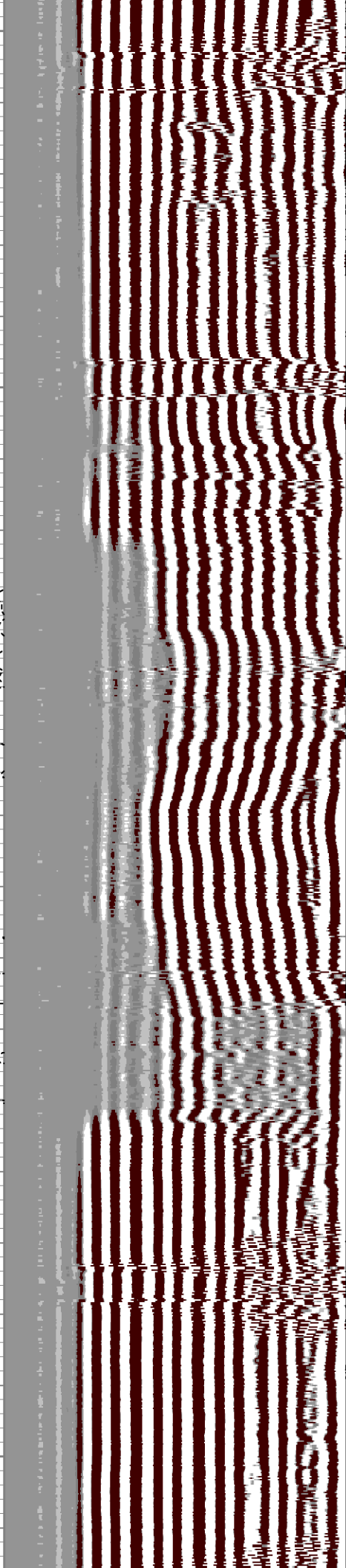
5500

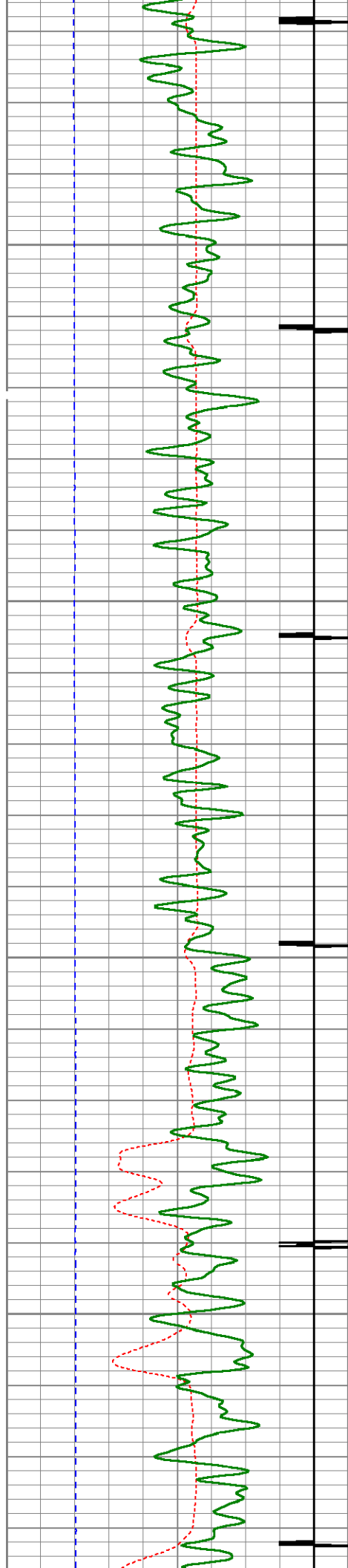
5550

5600

5650

5700



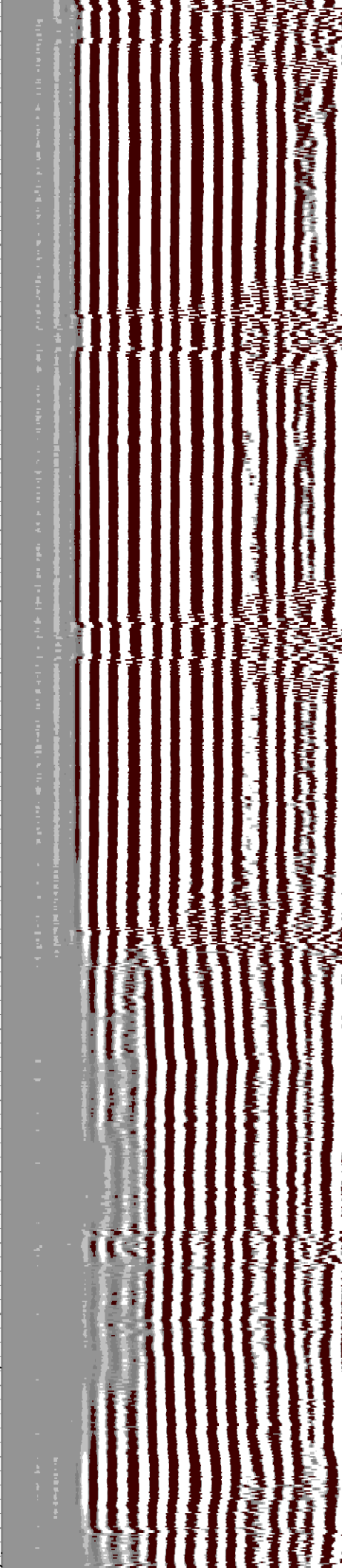
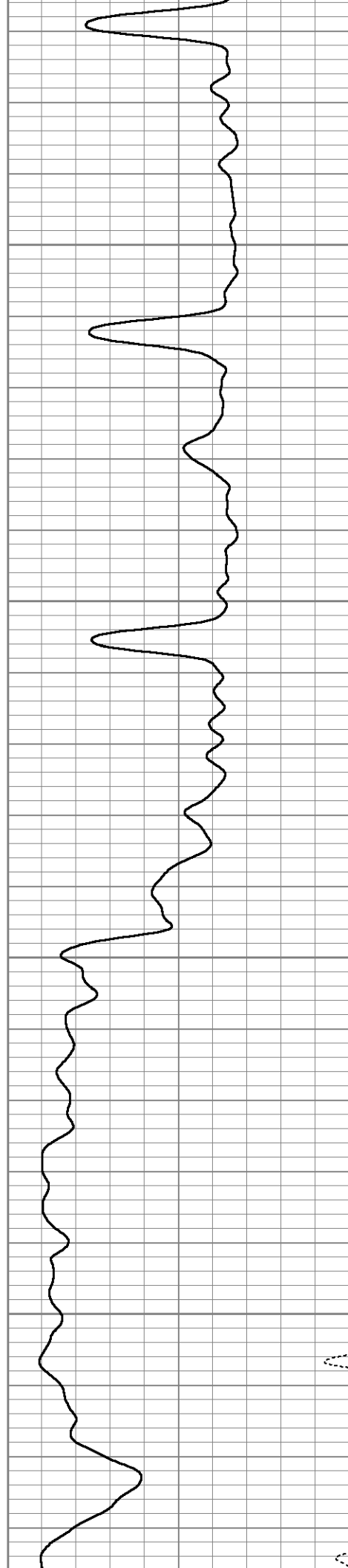


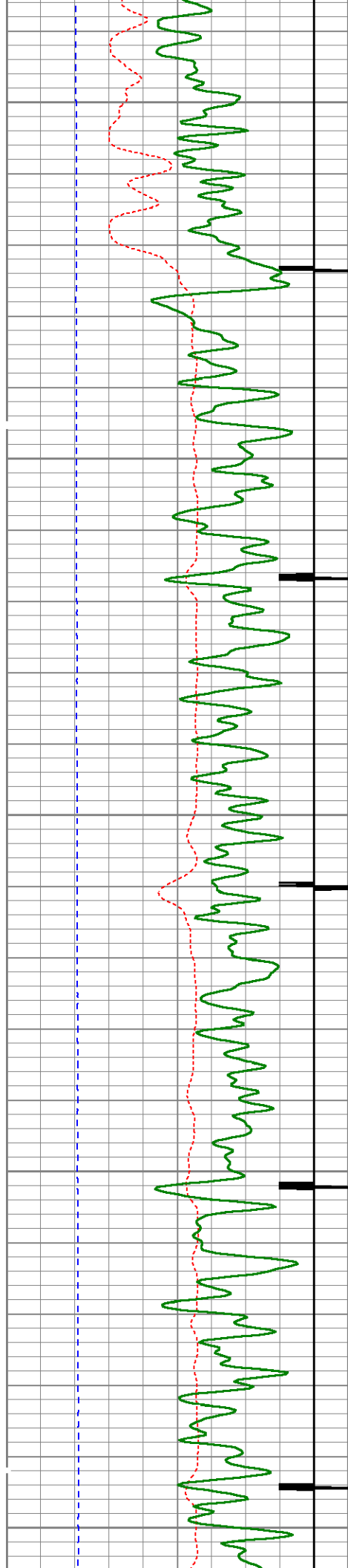
5750

5800

5850

5900





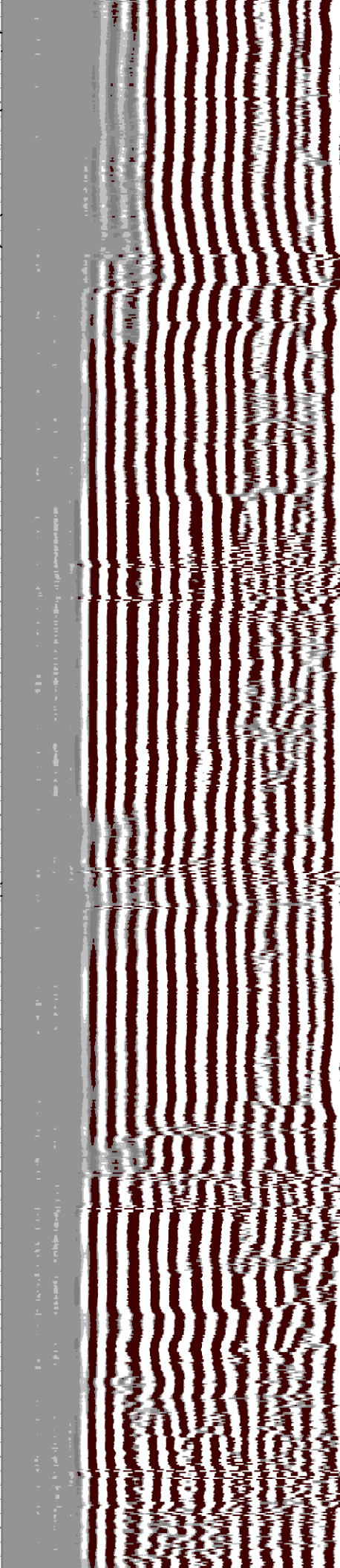
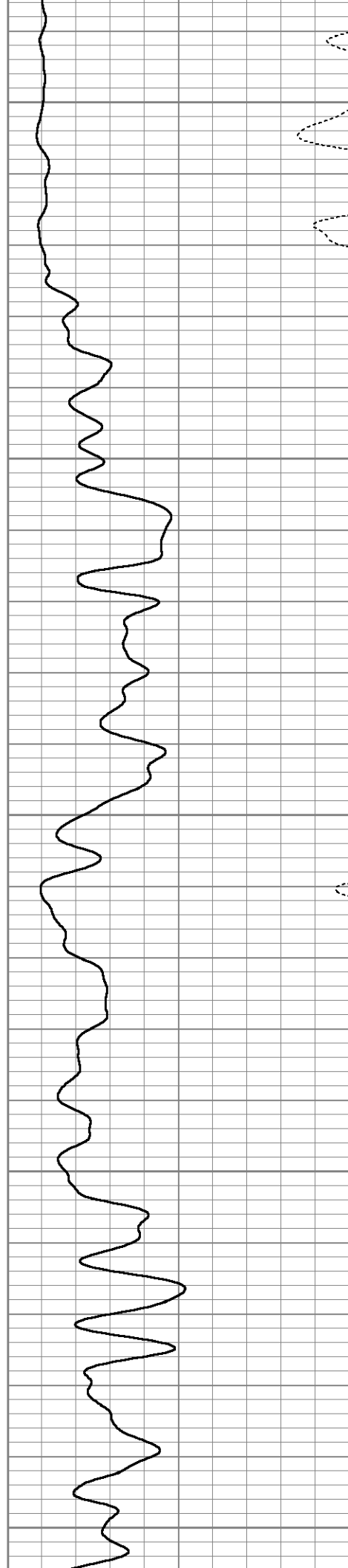
5950

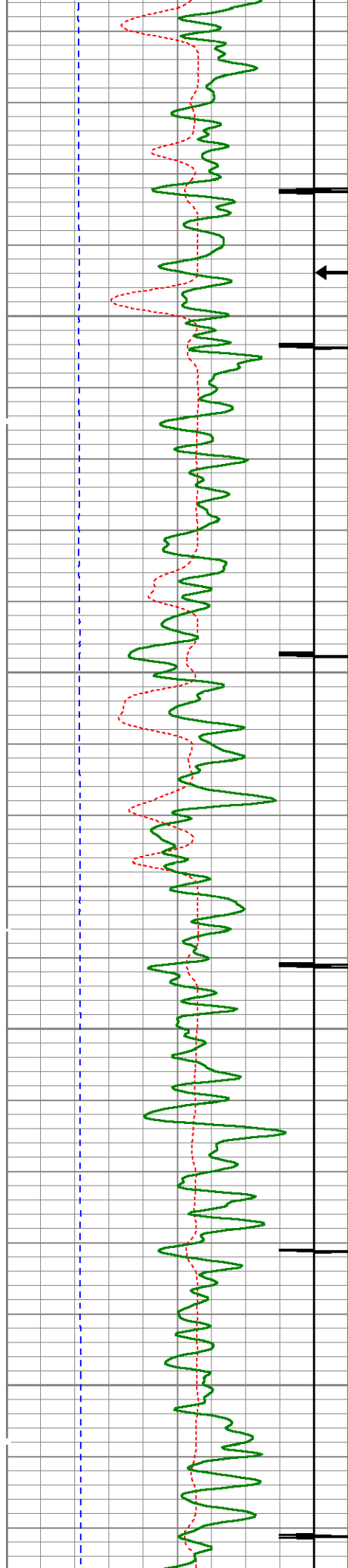
6000

6050

6100

6150





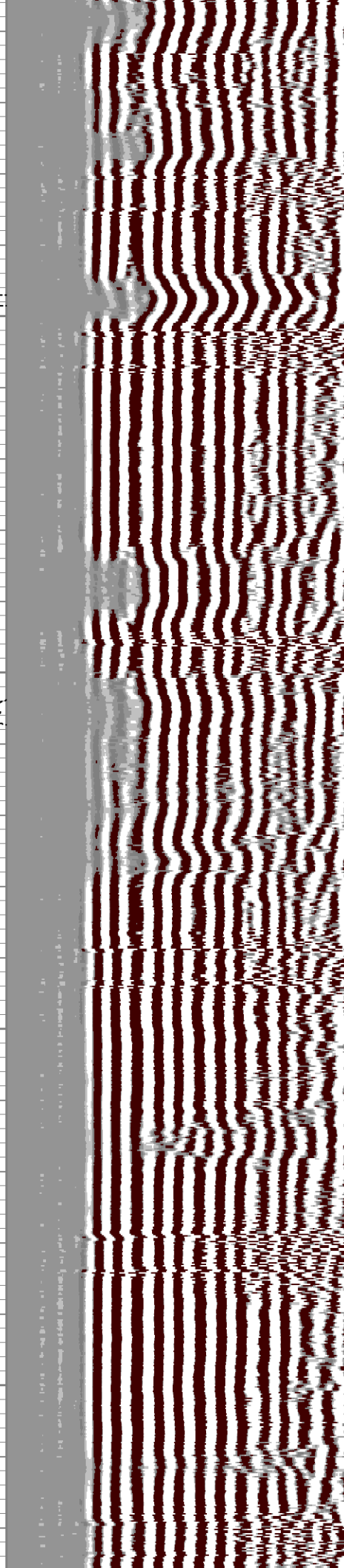
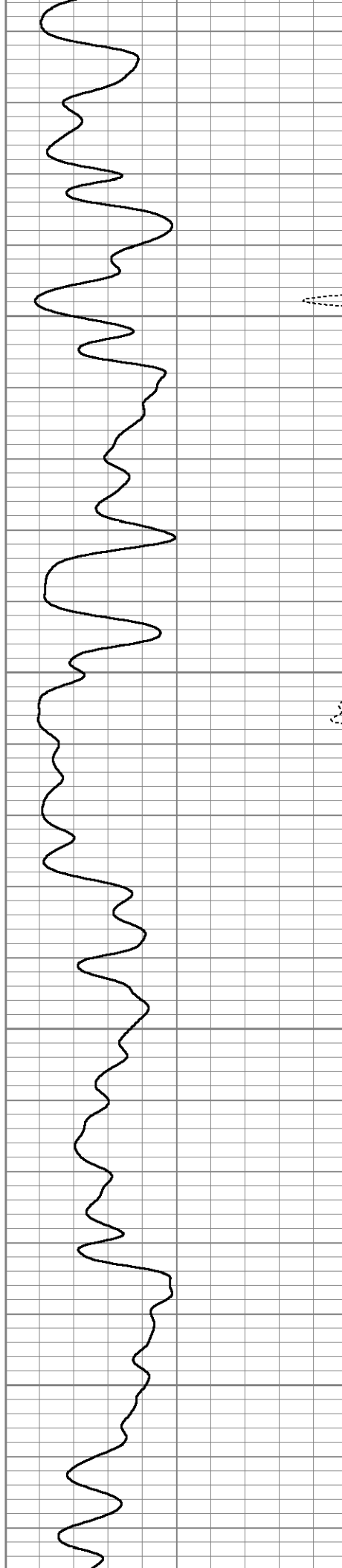
Short Joint

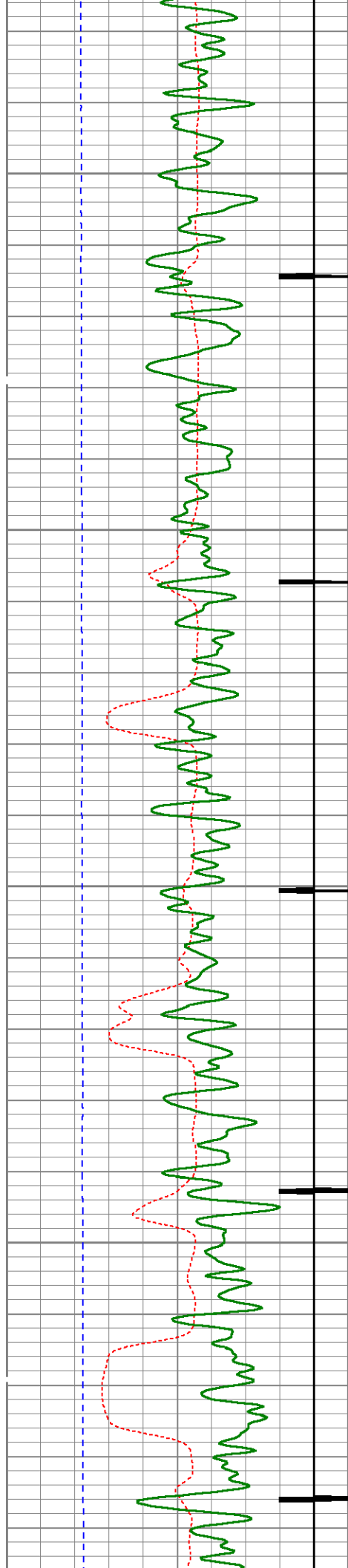
6200

6250

6300

6350



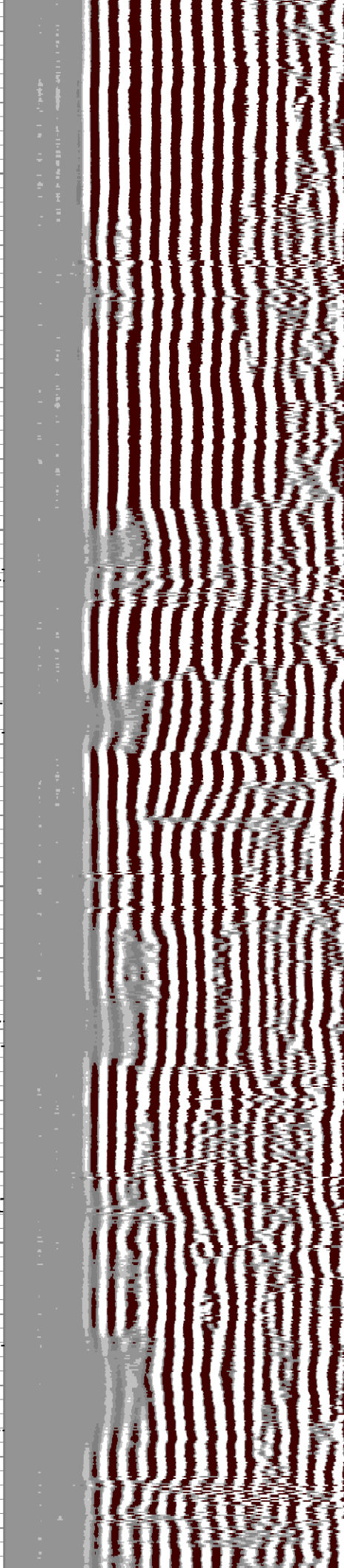
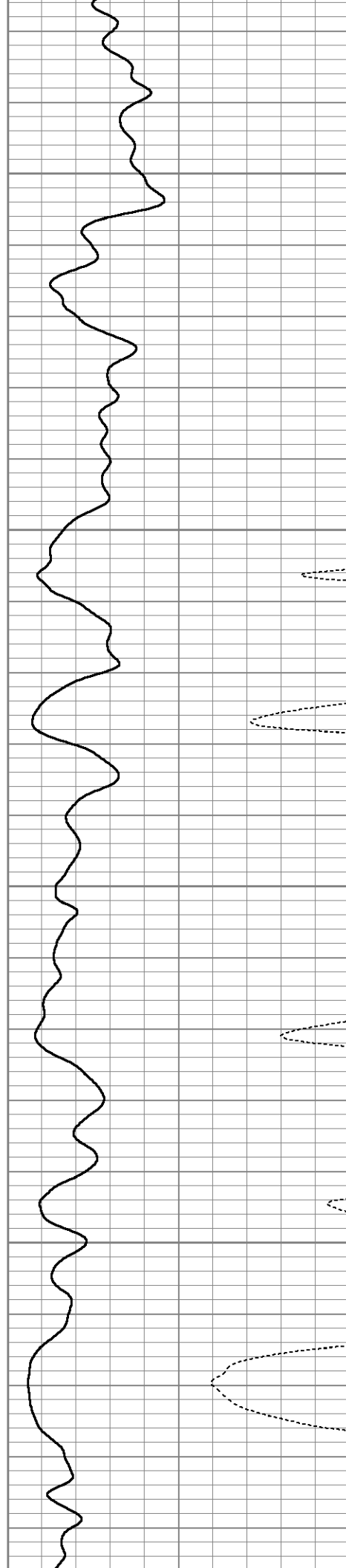


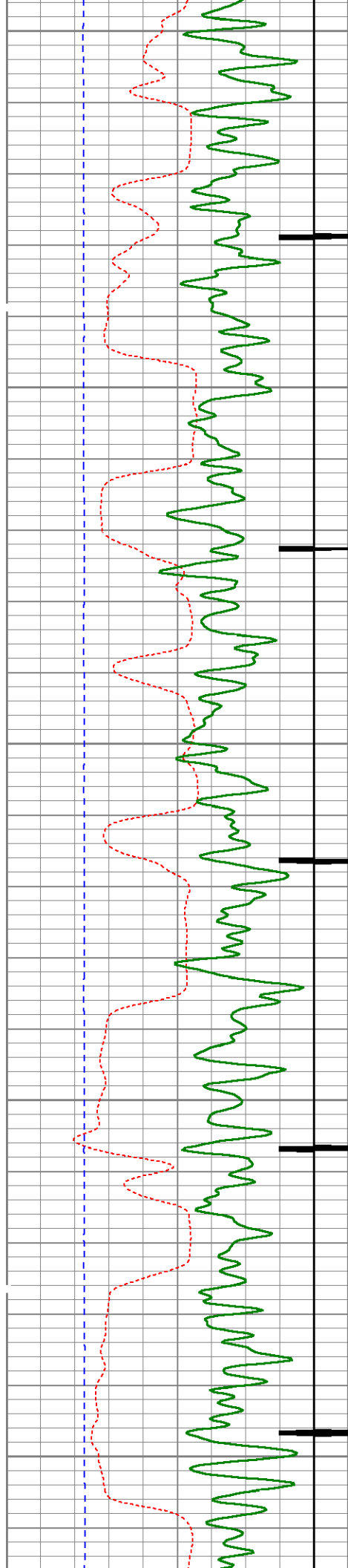
6400

6450

6500

6550





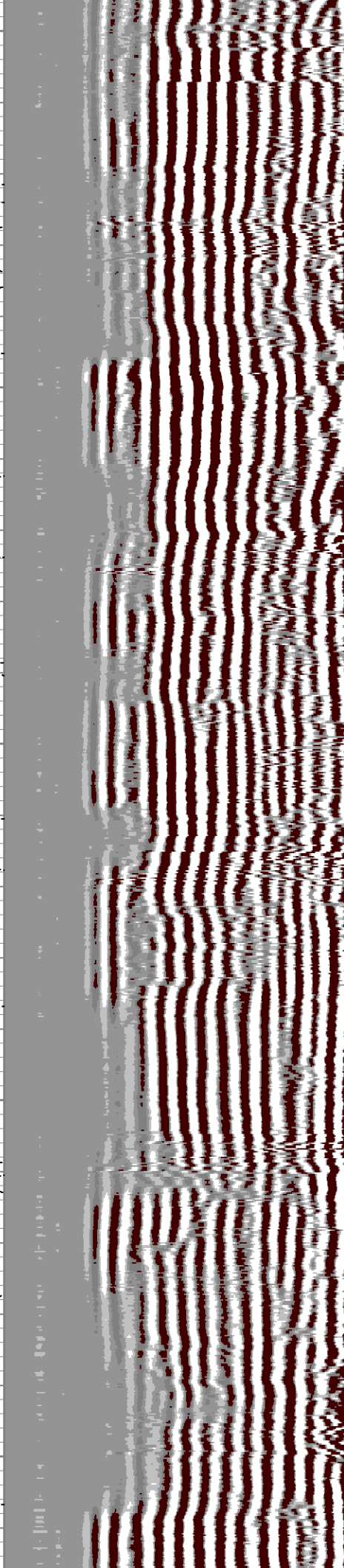
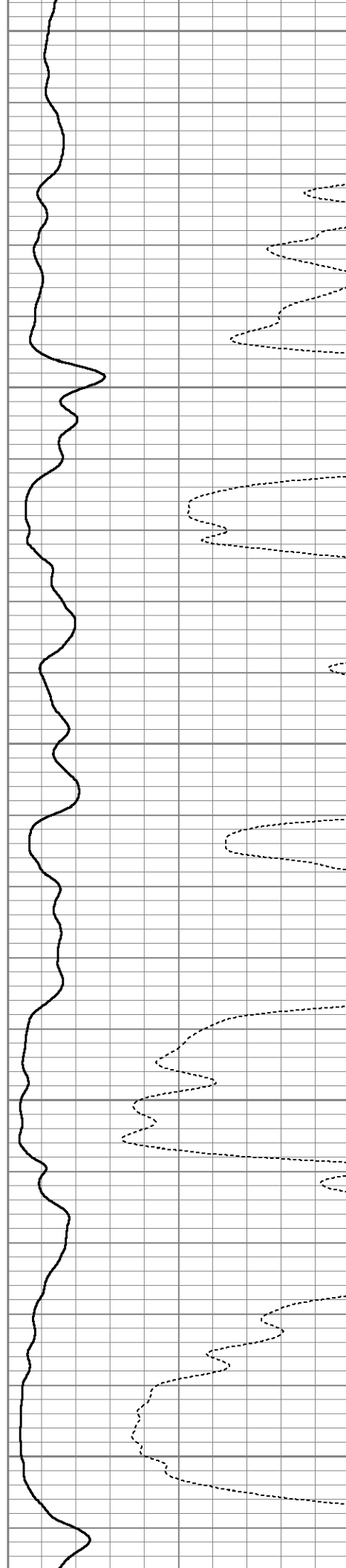
6600

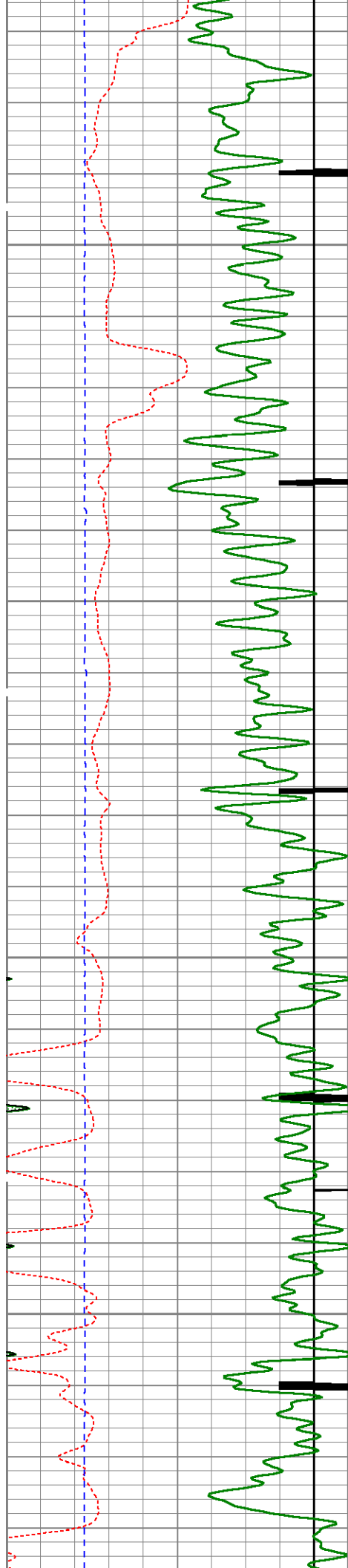
6650

6700

6750

6800



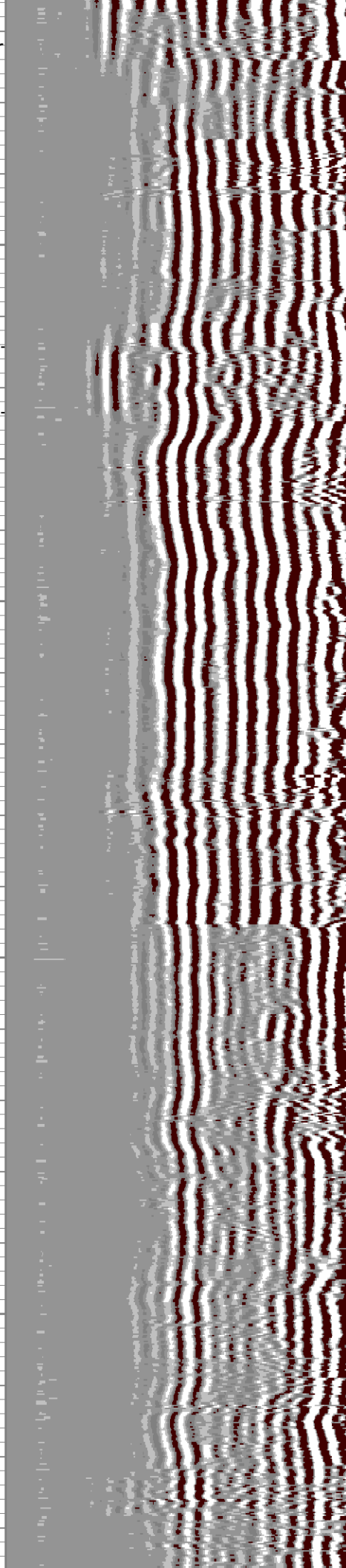
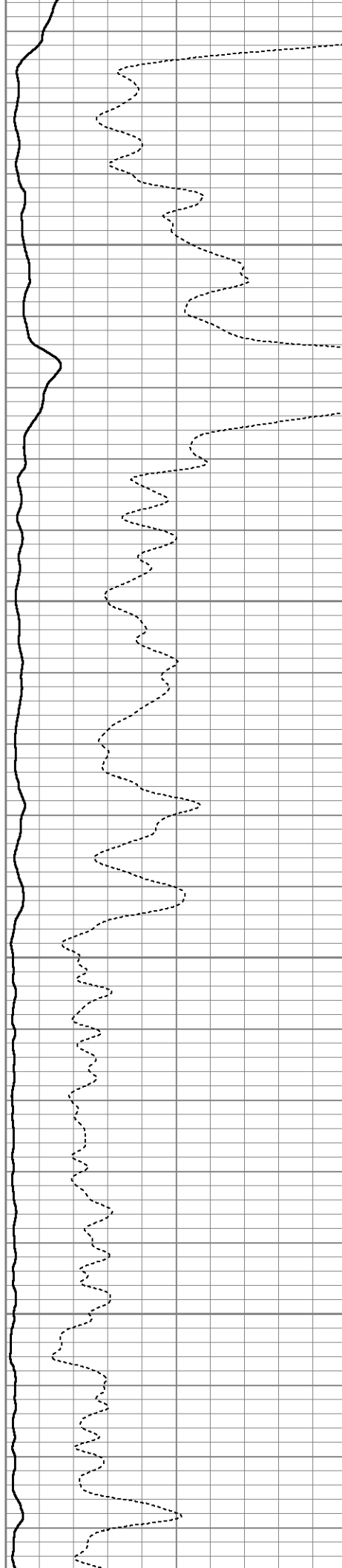


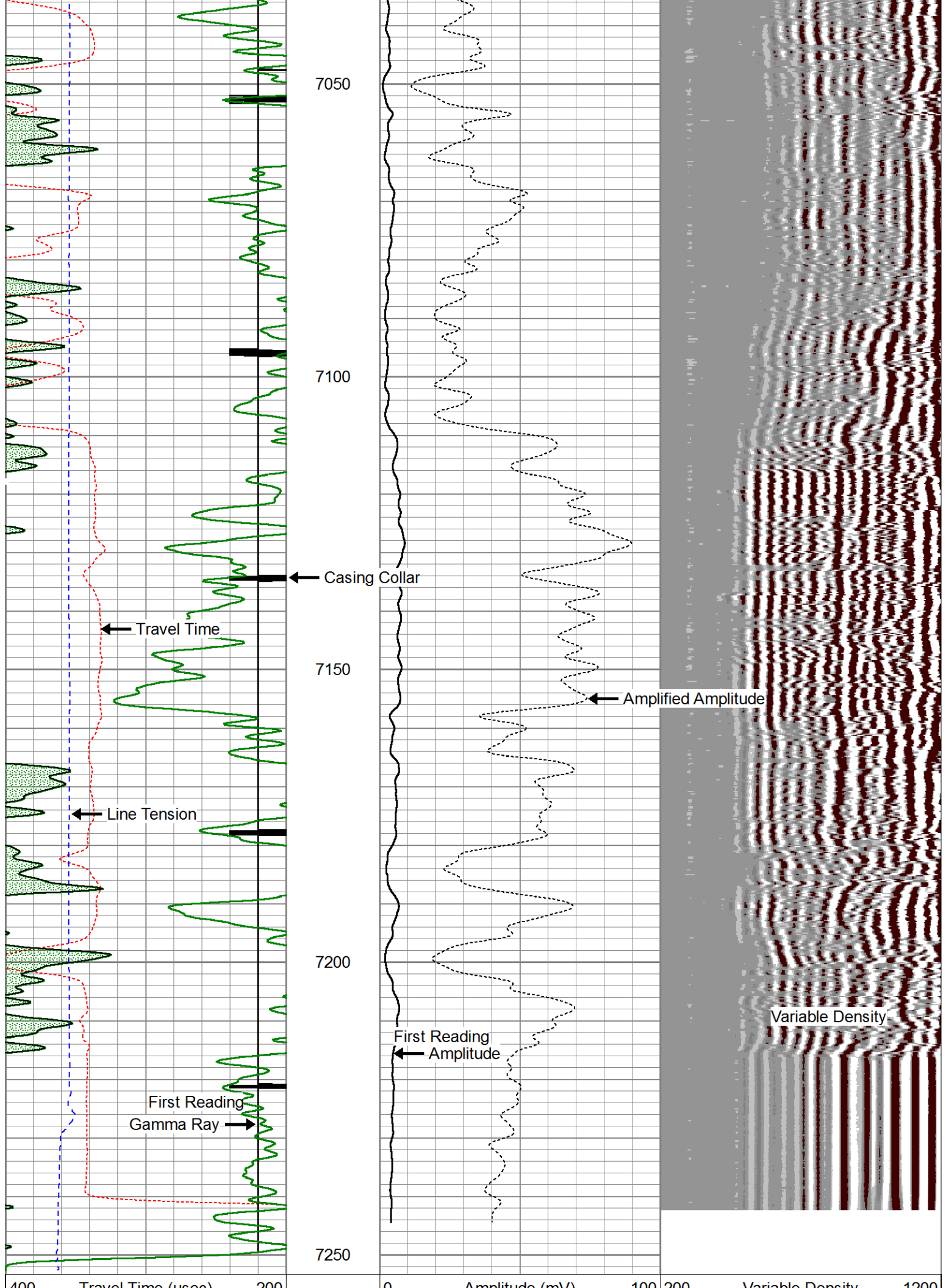
6850

6900

6950

7000





400	Travel Time (usec)	200
9	Casing Collar	-1
0	Gamma Ray (GAPI)	150
0	Line Tension (lb)	5000

0	Amplitude (mV)	100	200
0	Amplified Amplitude (mV)	10	

Variable Density 1200

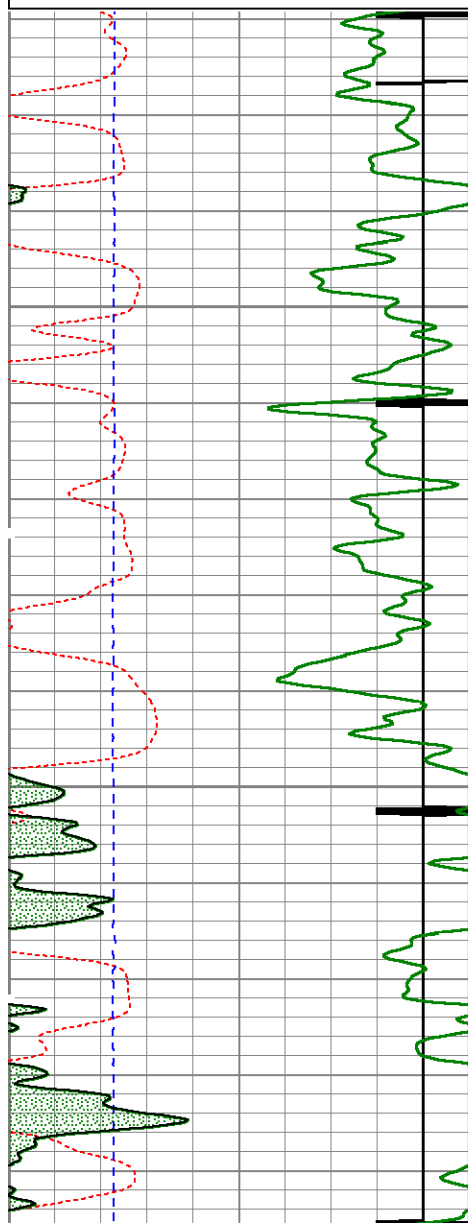


Repeat Pass (0 PSI)

Database File: c:\warrior\data\cased hole\tekton\pavistma south #1_cbl\tekton pavistma south #1_cbl.db
Dataset Pathname: pass3
Presentation Format: cblprobe
Dataset Creation: Thu Oct 24 14:50:07 2013 by Log 0
Charted by: Depth in Feet scaled 1:240

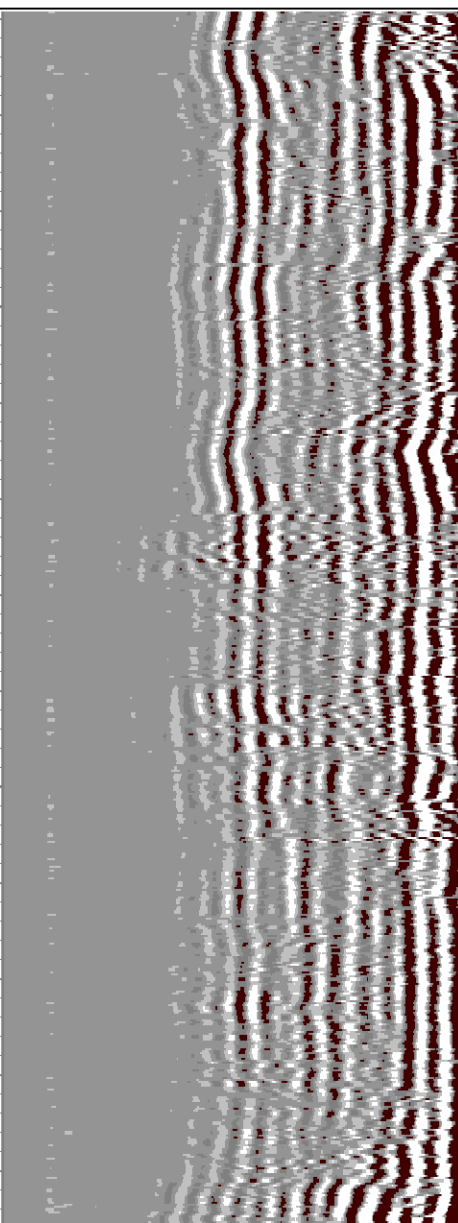
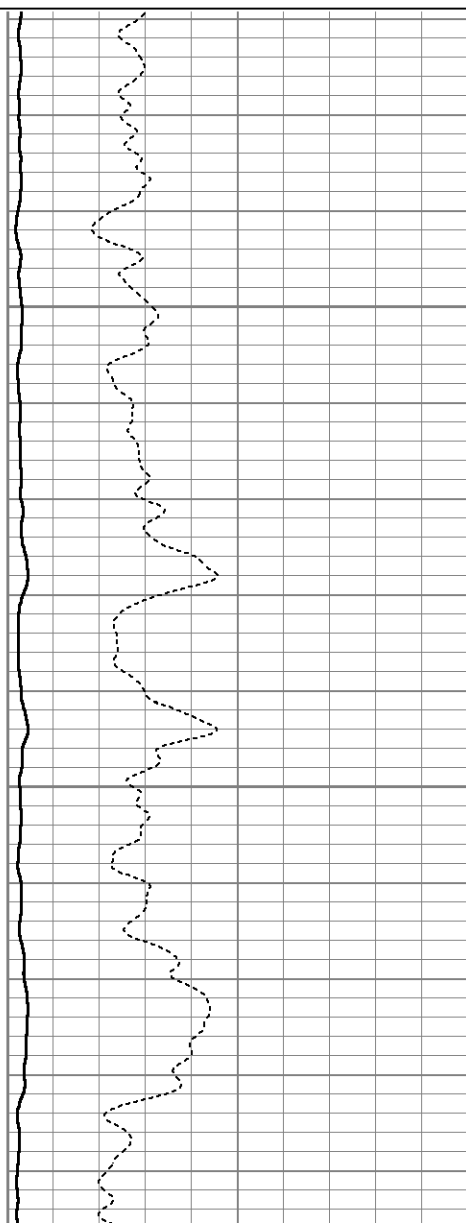
400	Travel Time (usec)	200
9	Casing Collar	-1
0	Gamma Ray (GAPI)	150
0	Line Tension (lb)	5000

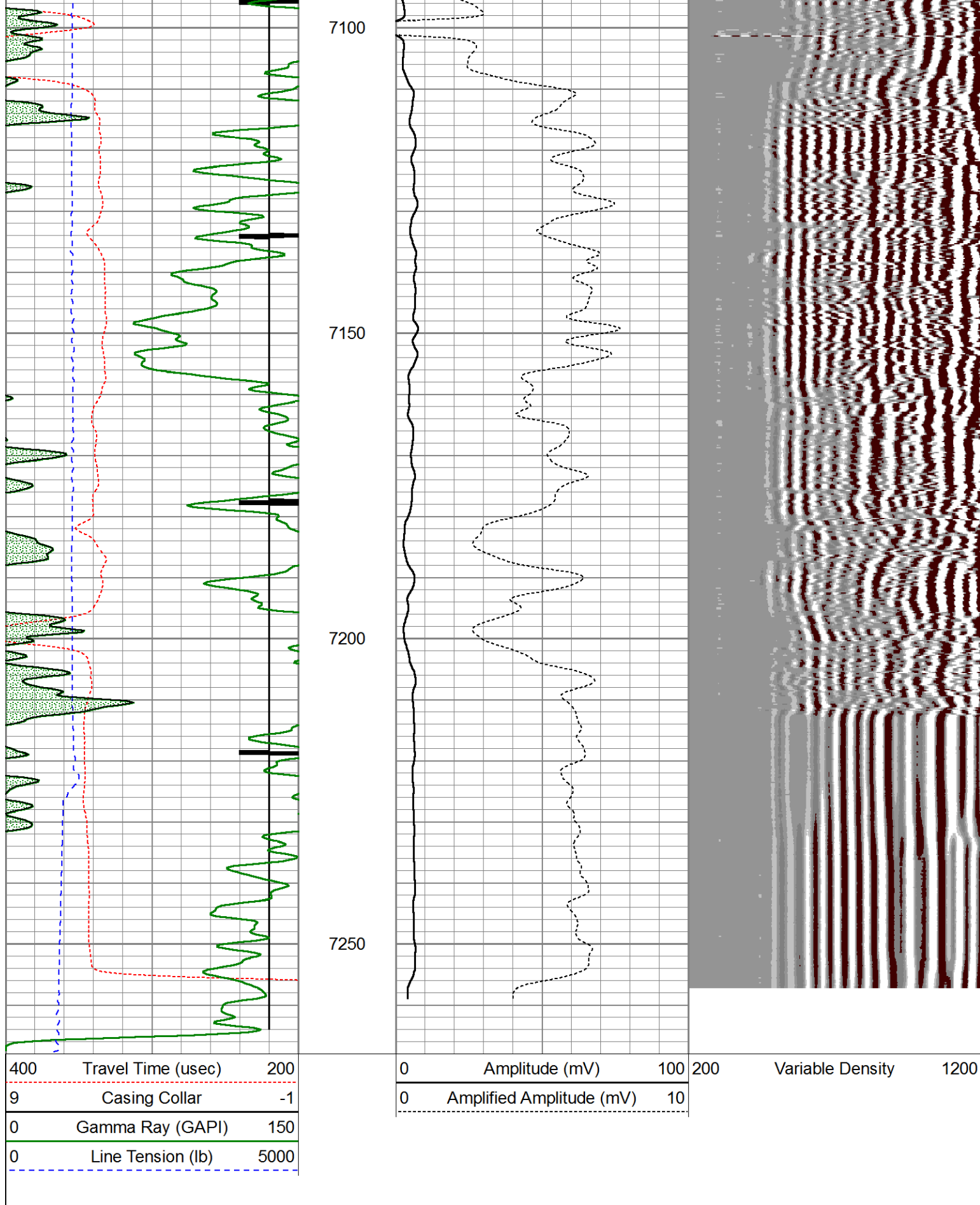
0	Amplitude (mV)	100	200	Variable Density	1200
0	Amplified Amplitude (mV)	10			



7000

7050





Calibration Report

Database File: C:\Warrior\Data\Cased Hole\Tekton\Pavistma South #1_CBL\tekton pavistma south #1_cbl.db
 Dataset Pathname: pass6
 Dataset Creation: Thu Oct 24 15:35:19 2013 by Calc 0

Gamma Ray Calibration Report

Serial Number:	110108-Dig	
Tool Model:	Probe275	
Performed:	Mon Jul 01 16:56:15 2013	
Calibrator Value:	1.0	GAPI
Background Reading:	0.0	cps
Calibrator Reading:	1.0	cps
Sensitivity:	0.8500	GAPI/cps

Temperature Calibration Report

Serial Number:	110108-Dig			
Tool Model:	Probe275			
Performed:	Sun Jun 13 13:33:21 1993			
	Reference		Reading	
Low Reference:	0.00	degF	0.00	cps
High Reference:	1.00	degF	1.00	cps
Gain:	1.00			
Offset:	0.00			
Delta Spacing	2			

Segmented Cement Bond Log Calibration Report

Serial Number:	111107		
Tool Model:	Probe		
Calibration Casing Diameter:	7.000	in	
Calibration Depth:	5109.913	ft	

Master Calibration, performed Thu Oct 24 14:49:40 2013:

	Raw (v)		Calibrated (mv)		Results	
	Zero	Cal	Zero	Cal	Gain	Offset
3'	-0.024	0.708	1.000	62.165	103.602	4.022
CAL	-0.035	1.846				
5'	-0.021	0.385	1.000	62.165	150.937	4.108
SUM						
S1	-0.015	0.790	0.000	100.000	124.181	1.913
S2	-0.010	0.849	0.000	100.000	116.410	1.138
S3	-0.019	0.844	0.000	100.000	115.865	2.249
S4	-0.017	0.794	0.000	100.000	123.245	2.118
S5	-0.018	0.691	0.000	100.000	141.105	2.470
S6	-0.018	0.603	0.000	100.000	161.057	2.894
S7	-0.019	0.567	0.000	100.000	170.798	3.238
S8	-0.019	0.608	0.000	100.000	159.682	2.965

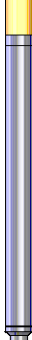
Internal Reference Calibration, performed Wed Dec 31 17:00:00 1969:

	Raw (v)		Calibrated (v)		Results	
	Zero	Cal	Zero	Cal	Gain	Offset
CAL	0.000	0.000	-0.035	1.846	1.000	0.000

Air Zero Calibration, performed Thu Oct 17 08:50:08 2013:

		Raw (v)	Calibrated (v)	Results
		Zero	Zero	Offset
3'		0.000	0.000	0.000
5'		0.000	0.000	0.000
SUM				
S1		0.000	0.000	0.000
S2		0.000	0.000	0.000
S3		0.000	0.000	0.000
S4		0.000	0.000	0.000
S5		0.000	0.000	0.000
S6		0.000	0.000	0.000
S7		0.000	0.000	0.000
S8		0.000	0.000	0.000

Sensor	Offset (ft)	Schematic	Description	Len (ft)	OD (in)	Wt (lb)
			Titan Cable_head	1.00	1.44	10.00
			Probe275 2.75" Centralizer	2.88	2.75	20.00
WVF3FT	11.84		RBT-Probe (111107) Probe Radii Bond Tool with Digital Telemetry	8.75	2.75	90.00
WVFCAL	11.84					
WVFS1	11.84					
WVFS2	11.84					
WVFS3	11.84					
WVFS4	11.84					
WVFS5	11.84					
WVFS6	11.84					
WVFS7	11.84					
WVFS8	11.84					
WVF5FT	10.84					
			Probe275 2.75" Centralizer	2.88	2.75	20.00
CCL	3.88					

TEMP	3.00		GR-Probe275 (110108-Dig) Probe 2 3/4" Logging Gamma Ray	4.78	2.75	57.00
GR	2.54					
Dataset: tekton pavistma south #1_cbl.db: field/well/run1/pass6 Total Length: 20.28 ft Total Weight: 197.00 lb O.D.: 2.75 in						