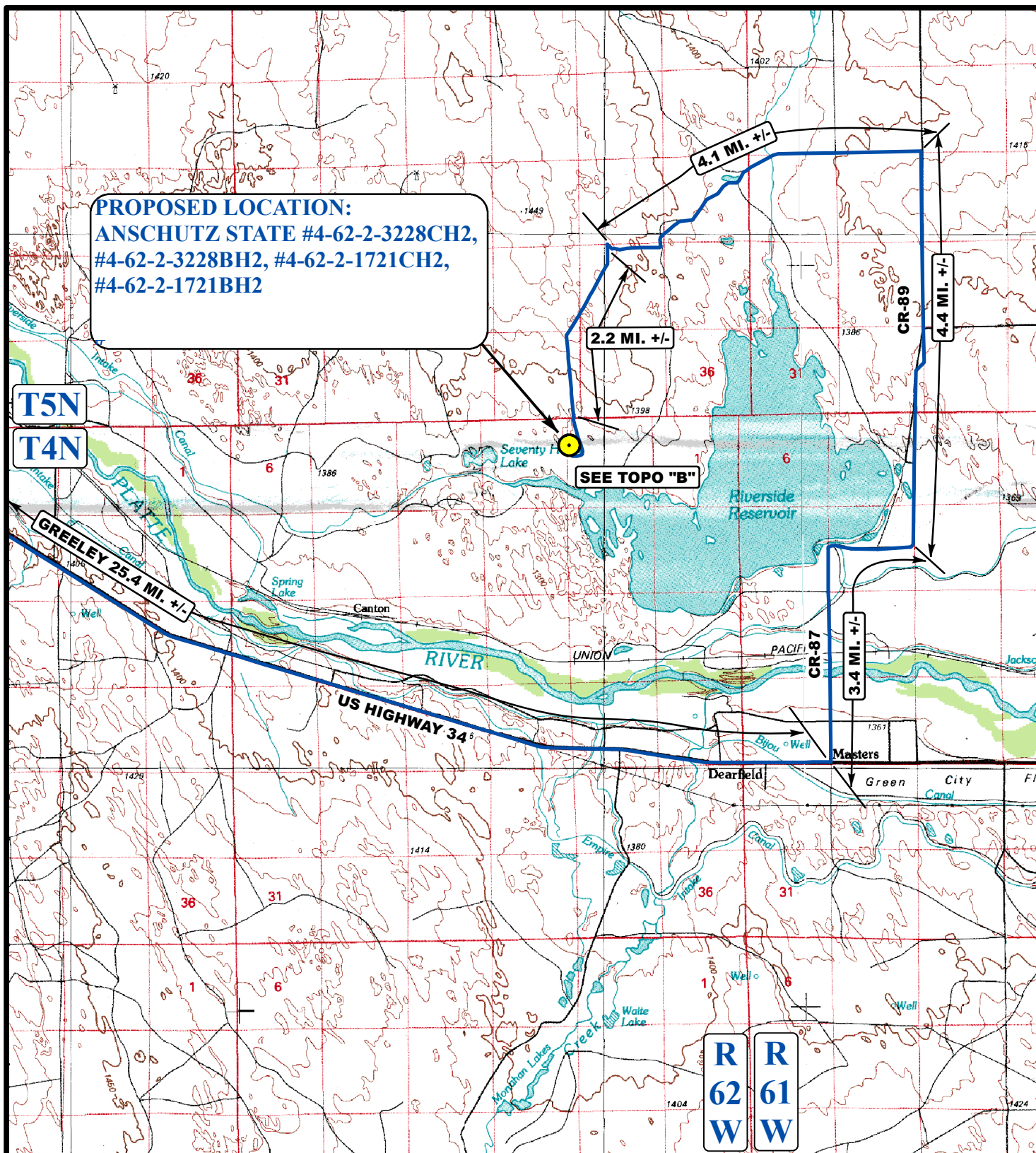


BILL BARRETT CORPORATION
ANSCHUTZ STATE #4-62-2-3228CH2,
#4-62-2-3228BH2, #4-62-2-1721CH2,
#4-62-2-1721BH2

SECTION 2, T4N, R62W, 6th P.M.

PROCEED IN AN EASTERLY, THEN SOUTHEASTERLY DIRECTION FROM GREELEY, COLORADO ALONG HIGHWAY 34 APPROXIMATELY 25.4 MILES TO THE JUNCTION OF THIS ROAD AND COUNTY ROAD 87 TO THE NORTH; TURN LEFT AND PROCEED IN A NORTHERLY, THEN EASTERLY DIRECTION APPROXIMATELY 3.4 MILES TO THE JUNCTION OF THIS ROAD AND COUNTY ROAD 89 TO THE NORTH; TURN LEFT AND PROCEED IN A NORTHERLY DIRECTION APPROXIMATELY 4.4 MILES TO JUNCTION OF THIS ROAD AND AN EXISTING ROAD TO THE WEST; TURN LEFT AND PROCEED IN A WESTERLY, THEN SOUTHWESTERLY DIRECTION APPROXIMATELY 4.1 MILES TO THE JUNCTION OF THIS ROAD AND AN EXISTING ROAD TO THE SOUTH; TURN LEFT AND PROCEED IN A SOUTHERLY DIRECTION APPROXIMATELY 2.2 MILES TO THE BEGINNING OF THE PROPOSED ACCESS TO THE SOUTH; FOLLOW ROAD FLAGS IN A SOUTHERLY, THEN WESTERLY, THEN NORTHWESTERLY DIRECTION APPROXIMATELY 3,215' TO THE PROPOSED LOCATION.

TOTAL DISTANCE FROM GREELEY, COLORADO TO THE PROPOSED LOCATION IS APPROXIMATELY 40.1 MILES.



LEGEND:

 PROPOSED LOCATION

BILL BARRETT CORPORATION

ANSCHUTZ STATE #4-62-2-3228CH2, #4-62-2-3228BH2,
#4-62-2-1721CH2, #4-62-2-1721BH2

SECTION 2, T4N, R62W, 6th P.M.
SW 1/4 NW 1/4



Utah Engineering & Land Surveying
85 South 200 East Vernal, Utah 84078
(435) 789-1017 * FAX (435) 789-1813

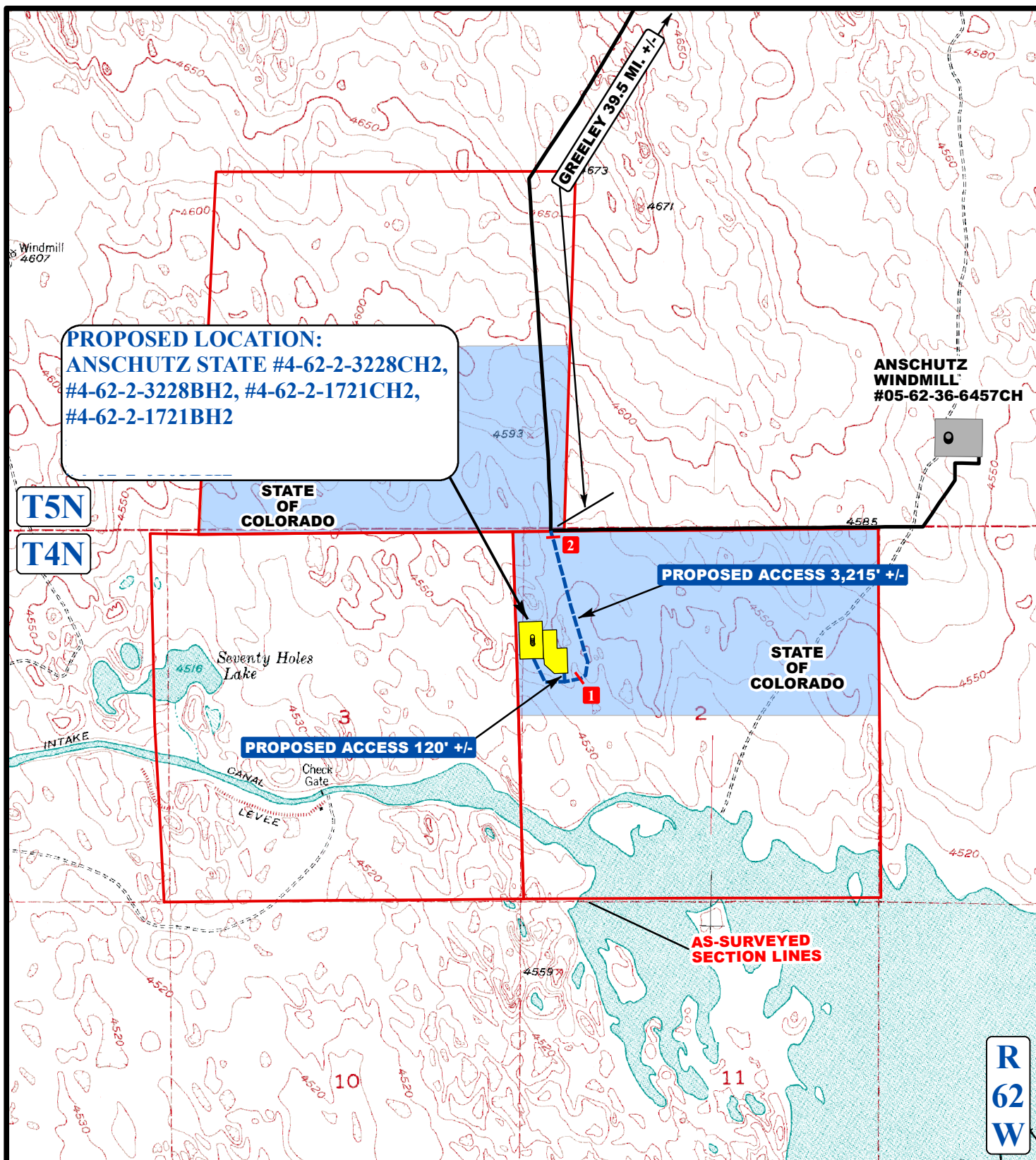


**ACCESS ROAD
MAP**

12 **11** **13**
MONTH DAY YEAR

SCALE: 1:100,000 DRAWN BY: J.L.G. REVISED: 01-07-14





LEGEND:

- EXISTING ROADS
- - - PROPOSED ACCESS ROAD
- 1 18" CMP REQUIRED
- 2 CATTLE GUARD REQUIRED

BILL BARRETT CORPORATION

ANSCHUTZ STATE #4-62-2-3228CH2, #4-62-2-3228BH2,
#4-62-2-1721CH2, #4-62-2-1721BH2

SECTION 2, T4N, R62W, 6th P.M.
SW 1/4 NW 1/4



Utah Engineering & Land Surveying
85 South 200 East Vernal, Utah 84078
(435) 789-1017 * FAX (435) 789-1813



**ACCESS ROAD
MAP**

12 **11** **13**
MONTH DAY YEAR

SCALE: 1" = 2000' DRAWN BY: J.L.G. REVISED: 01-07-14

B
TOPO